



## **CST150/CST100 Camera Setup Tool**



**C2912M-A (2/05)**

# Regulatory Notices

---

The CST150 and CST100 compact field service tools enhance the ease of install of our new Pelco cameras. Both tools incorporate three menu buttons for accessing the setup menus on 5100 Series cameras. Both tools also access video through a 2.5 mm service connector on Pelco's 5100, 3610, 3710, and 3770 Series cameras and the ICS090 Series Camclosure® integrated camera system.

## **Radio and Television Interference**

This equipment has been tested and found to comply with the limits of a Class A digital device, pursuant to Part 15 of the FCC Rules. These limits are designed to provide reasonable protection against harmful interference when the equipment is operated in a commercial environment. This equipment generates, uses, and can radiate radio frequency energy and, if not installed and used in accordance with the instruction manual, may cause harmful interference to radio communications. Operation of this equipment in a residential area is likely to cause harmful interference in which case the user will be required to correct the interference at his own expense.

Changes and Modifications not expressly approved by the manufacturer or registrant of this equipment can void your authority to operate this equipment under Federal Communications Commission's rules.

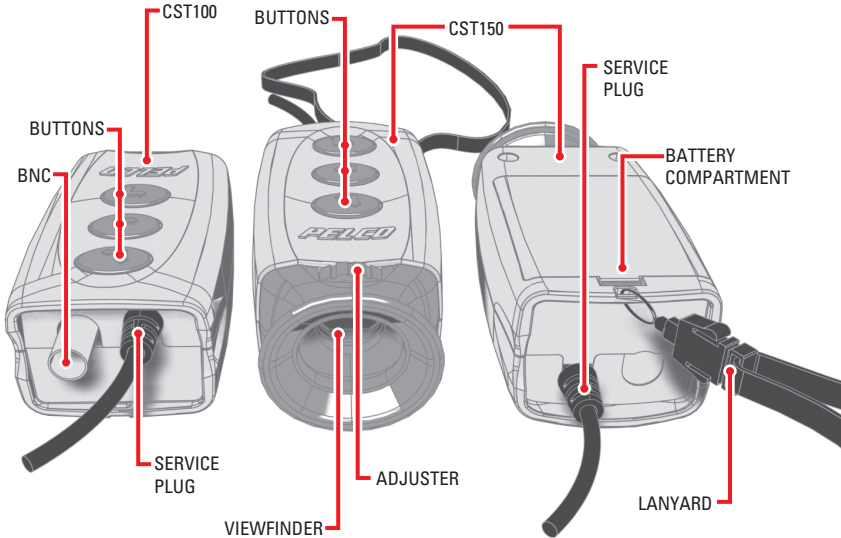
In order to maintain compliance with FCC regulations shielded cables must be used with this equipment. Operation with non-approved equipment or unshielded cables is likely to result in interference to radio and television reception.

This Class A digital apparatus complies with Canadian ICES-003.

Cet appareil numérique de la classe A est conforme à la norme NMB-003 du Canada.

# Description

The CST150 and CST100 compact field service tools enhance the ease of installing our new Pelco cameras. Both tools incorporate three menu buttons for accessing the setup menus on 5100 Series cameras. Both tools also access video through a 2.5 mm service connector on Pelco's 5100, 3610, 3710, and 3770 Series cameras and the ICS090 Series Camclosure® integrated camera system.



**Figure 1.** CST100 and CST150

## Models

- CST150 Camera setup tool with 800 x 225 pixel TFT microdisplay
- CST100 Camera setup tool with composite video output

## Parts List

Qty	Description
1	CST150 or CST100 camera setup tool
1	Lanyard (attached) (CST150 only)
1	Adapter cable (CST150 only)
4	AA batteries (CST150 only)

# Setup

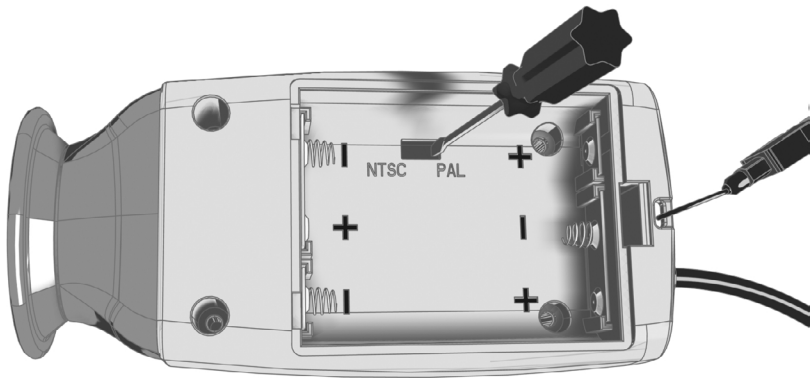
---

## SELECTING VIDEO FORMAT (CST150)

A switch for selecting the video format for the microdisplay on the CST150 is located in the battery compartment.

To select the video format:

1. Remove the battery compartment cover. You may have to use a small screwdriver.
2. Remove the batteries.
3. Use a pen or small screwdriver to move the switch to either NTSC or PAL.
4. Reinstall the batteries. Make sure you orient the batteries according to the + and – symbols in the compartment for each battery.
5. Reinstall the battery compartment cover.



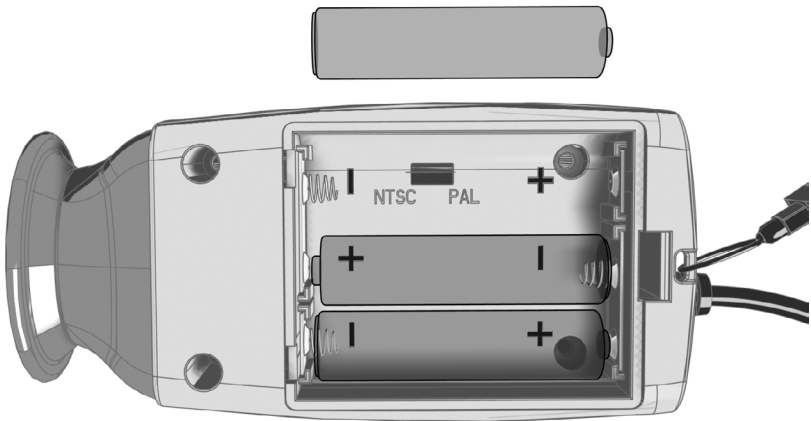
**Figure 2.** Video Format Switch

## INSTALLING/REPLACING BATTERIES (CST150)

The CST150 requires three standard AA batteries to power the microdisplay. These batteries provide up to eight hours continuous operation.

To install new batteries:

1. Remove the battery compartment cover. You may have to use a small screwdriver.
2. Remove the old batteries.
3. Install the new batteries. Make sure you orient the batteries according to the + and – symbols in the compartment for each battery.
4. Reinstall the battery compartment cover.



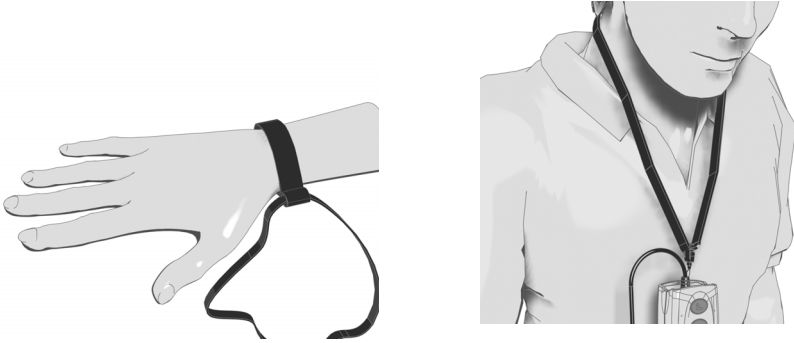
**Figure 3.** Installing Batteries

# Operation

---

## USING THE LANYARD

The lanyard (supplied with the CST150) helps you secure the CST150. When slipped around your wrist or neck, the tool will not fall to the ground if dropped.



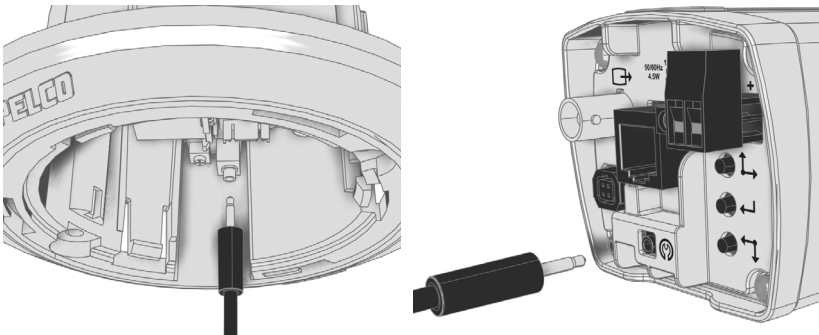
**Figure 4.** Using the Lanyard

## CONNECTING TO A CAMERA

### USING THE SERVICE PLUG

The service plug lets you easily access video from any camera with a 2.5 mm service connector, including the ICS090 Series Camclosure® integrated camera system and Pelco's 5100, 3610, 3710, and 3770 Series cameras.

To connect the CST150 or the CST100 to the camera, insert the service plug into the service connector. For the CST100, connect a cable from the BNC on the tool to the BNC on a handheld monitor. Video appears on the microdisplay (CST150) or the handheld monitor. Refer to the camera documentation for more information.



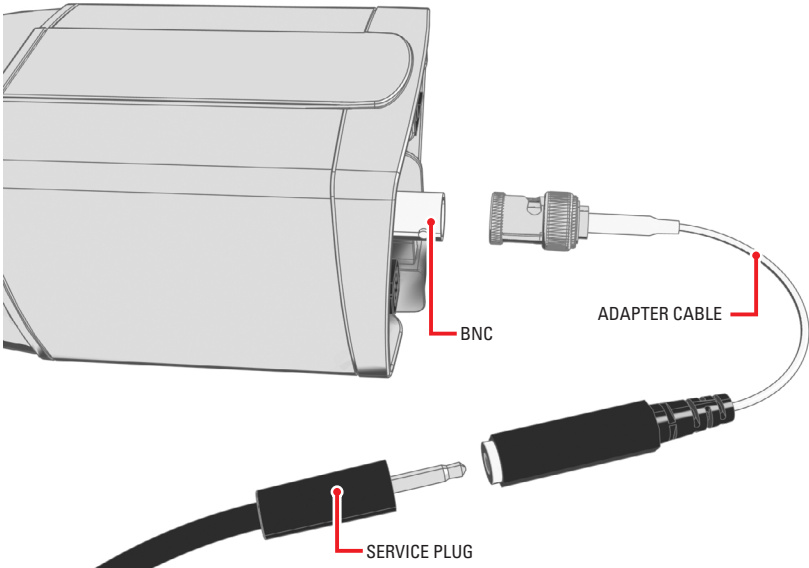
**Figure 5.** Connecting to a Camclosure or Camera

## USING THE ADAPTER CABLE (CST150)

The adapter cable lets you easily access video from the composite video output (BNC) on any camera and display it on the microdisplay.

To view camera video:

1. Connect the adapter cable to the service plug.
2. Connect the adapter cable to the BNC connector on the camera. Camera video appears on the microdisplay.

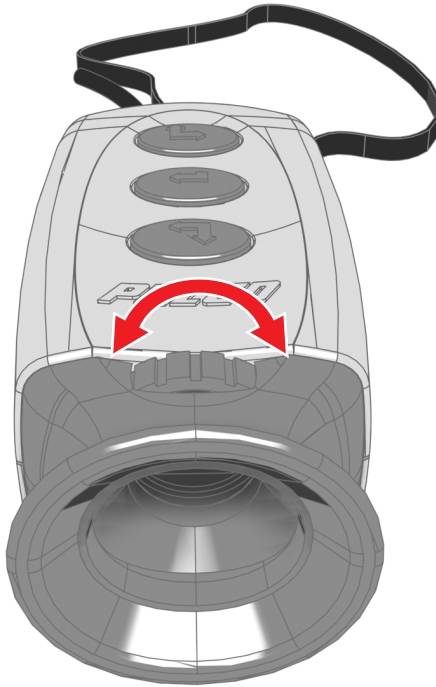


**Figure 6.** Connecting to the BNC Connector

## FOCUSING THE VIEWFINDER (CST150)

The CST150 offers an 800 x 225 pixel TFT microdisplay. Use it to view video from the camera. As soon as you connect the service plug or the adapter cable to a camera, video appears on the microdisplay.

To focus the viewfinder, move the adjuster either left or right (refer to Figure 7).



**Figure 7.** Focusing Viewfinder

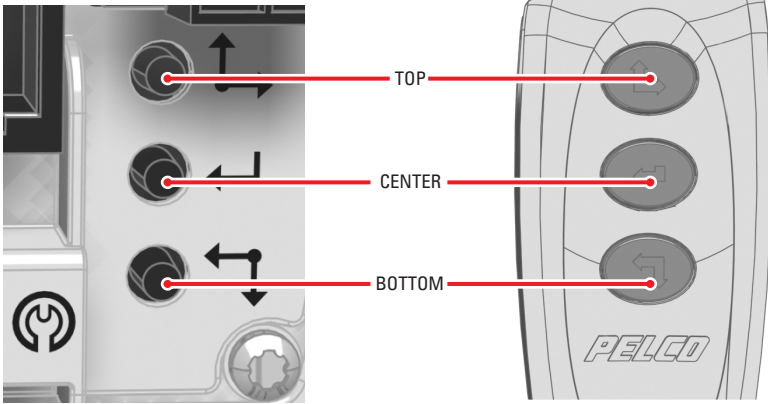


**NOTE:** If you cannot focus the viewfinder, check the camera focus.



## ACCESSING SETUP MENUS (5100 SERIES CAMERAS)

The CST150 and CST100 tools let you configure a 5100 Series camera from the setup menus. Figure 8 indicates the relationship between the menu buttons on the camera and the buttons on the CST150/CST100.



**Figure 8.** Accessing Setup Menus (5100 Series Camera)

To access the setup menus on the 5100 Series camera, press the center button. The setup menus should appear on the microdisplay or analog monitor.

Refer to the CCC5100H Series Camera Installation/Operation manual for complete information on using the buttons to configure the 5100 Series camera.

# Specifications

---

## MODELS

CST150	Camera setup tool with 800 x 225 pixel TFT microdisplay
CST100	Camera setup tool with composite video output

## SUPPLIED ACCESSORIES (CST150 only)

Lanyard (attached)	One
Adapter cable	One
AA batteries	Four (one spare)

## GENERAL

Service Plug	2.5 mm, three-conductor plug with 36-inch (91.4 cm) cable
Viewable Area (CST150 only)	800 x 225 pixels
Video Output (CST100 only)	BNC, for video output to analog monitor

## POWER

CST150	
Power Consumption	650 mW
Power Source	Three AA batteries
Battery Life	8 hours of continuous operation
CST100	
Power Consumption	5 mW; buttons powered by 5100 Series camera

## ENVIRONMENTAL

Operating Temperature	32° to 122°F (0° to 50°C)
Storage Temperature	-40° to 149°F (-40° to 65°C)
Operating Humidity	20% to 80%, noncondensing
Humidity Gradient	10% per hour

## PHYSICAL

Unit Weight	0.5 lb (0.23 kg)
Shipping Weight	1 lb (0.45 kg)

## COMPATIBLE CAMERA SERIES

5100 Series  
3610 Series  
3710 Series  
3770 Series  
ICS090 Series Camclosure

*(Design and product specifications subject to change without notice.)*

# PRODUCT WARRANTY AND RETURN INFORMATION

## WARRANTY

Pelco will repair or replace, without charge, any merchandise proved defective in material or workmanship **for a period of one year** after the date of shipment.

Exceptions to this warranty are as noted below:

- Five years on FT/FR8000 Series fiber optic products and the following fixed camera models: CC3701H-2, CC3701H-2X, CC3751H-2, CC3651H-2X, MC3651H-2, and CC3651H-2X.
- Three years on all other fixed camera models (including Camclosure® Integrated Camera Systems) and Genex® Series (multiplexers, server, and keyboard).
- Two years on all standard motorized or fixed focal length lenses.
- Two years on Legacy®, CM6700/CM6800/CM8500/CM9500/CM9700 Series Matrix, DF5 and DF8 Series Fixed Dome products.
- Two years on Spectra®, Esprit®, and PS20 Scanners, including when used in continuous motion applications.
- Two years on Esprit® and VVV5700 Series window wiper (excluding wiper blades).
- Eighteen months on DX Series digital video recorders and NVR300 Series network video recorders.
- One year (except video heads) on video cassette recorders (VCRs). Video heads will be covered for a period of six months.
- Six months on all pan and tilts, scanners or preset lenses used in continuous motion applications (that is, preset scan, tour and auto scan modes).

Pelco will warrant all replacement parts and repairs for 90 days from the date of Pelco shipment. All goods requiring warranty repair shall be sent freight prepaid to Pelco, Clovis, California. Repairs made necessary by reason of misuse, alteration, normal wear, or accident are not covered under this warranty.

Pelco assumes no risk and shall be subject to no liability for damages or loss resulting from the specific use or application made of the Products. Pelco's liability for any claim, whether based on breach of contract, negligence, infringement of any rights of any party or product liability, relating to the Products shall not exceed the price paid by the Dealer to Pelco for such Products. In no event will Pelco be liable for any special, incidental or consequential damages (including loss of use, loss of profit and claims of third parties) however caused, whether by the negligence of Pelco or otherwise.

The above warranty provides the Dealer with specific legal rights. The Dealer may also have additional rights, which are subject to variation from state to state.

If a warranty repair is required, the Dealer must contact Pelco at (800) 289-9100 or (559) 292-1981 to obtain a Repair Authorization number (RA), and provide the following information:

1. Model and serial number
2. Date of shipment, P.O. number, Sales Order number, or Pelco invoice number
3. Details of the defect or problem

If there is a dispute regarding the warranty of a product which does not fall under the warranty conditions stated above, please include a written explanation with the product when returned.

Method of return shipment shall be the same or equal to the method by which the item was received by Pelco.

## RETURNS

In order to expedite parts returned to the factory for repair or credit, please call the factory at (800) 289-9100 or (559) 292-1981 to obtain an authorization number (CA number if returned for credit, and RA number if returned for repair).

All merchandise returned for credit may be subject to a 20% restocking and refurbishing charge.

Goods returned for repair or credit should be clearly identified with the assigned CA or RA number and freight should be prepaid. Ship to the appropriate address below.

*If you are located within the continental U.S., Alaska, Hawaii or Puerto Rico, send goods to:*

Service Department  
Pelco  
3500 Pelco Way  
Clovis, CA 93612-5699

*If you are located outside the continental U.S., Alaska, Hawaii or Puerto Rico and are instructed to return goods to the USA, you may do one of the following:*

If the goods are to be sent by a COURIER SERVICE, send the goods to:

Pelco  
3500 Pelco Way  
Clovis, CA 93612-5699 USA

If the goods are to be sent by a FREIGHT FORWARDER, send the goods to:

Pelco c/o Expeditors  
473 Eccles Avenue  
South San Francisco, CA 94080 USA  
Phone: 650-737-1700  
Fax: 650-737-0933

## REVISION HISTORY

Manual #	Date	Comments
C2912M	11/04	Original version.
C2912M-A	2/05	Updatd accessories list. Updated unit operation. Minor changes.



Worldwide Headquarters  
3500 Pelco Way  
Clovis, California 93612 USA

USA & Canada  
Tel: 800/289-9100  
Fax: 800/289-9150  
International  
Tel: 1-559/292-1981  
Fax: 1-559/348-1120

[www.pelco.com](http://www.pelco.com)

**ISO9001**