



EVERFOCUS

Color Dome Camera Operation Instructions

Model No. **ED300E/200E**

Please read this manual first for correct installation and operation. This manual should be retained for future reference. The information in this manual was current when published. The manufacturer reserves the right to revise and improve its products. All specifications are therefore subject to change without notice.

PRECAUTIONS

1. Do not have camera immersed in water.
2. Do not disassemble it or place it on an unstable base.
3. Do not touch the surface of CCD sensor by hand directly.
4. Never face the camera toward the sun.
5. Use proper power source otherwise the camera will not function correctly.
6. Use the camera at temperatures within 0°C ~ 50°C/32°F~122°F and humidity between 20%~80%. The input power sources are 12VDC only and 12VDC/24VAC.

PREFACE

The ED200/300 color dome camera with vari-focal/fixed Lens Series are compact, CCD Color Cameras. Their stylish appearance can be applied as per installer's ideal locations on the ceiling. The dome camera design with advance digital processing circuitry for middle/high-resolution 1/3" color interlines transfer CCD sensor, it has DIP switch for FL ON/OFF, Mirror ON/OFF, AGC ON/OFF and D/N ON/OFF. The dome camera uses a fixed/vari-focal auto iris lens for discreet surveillance or close-up viewing and it features with Iris Level volume control for the best viewing quality.

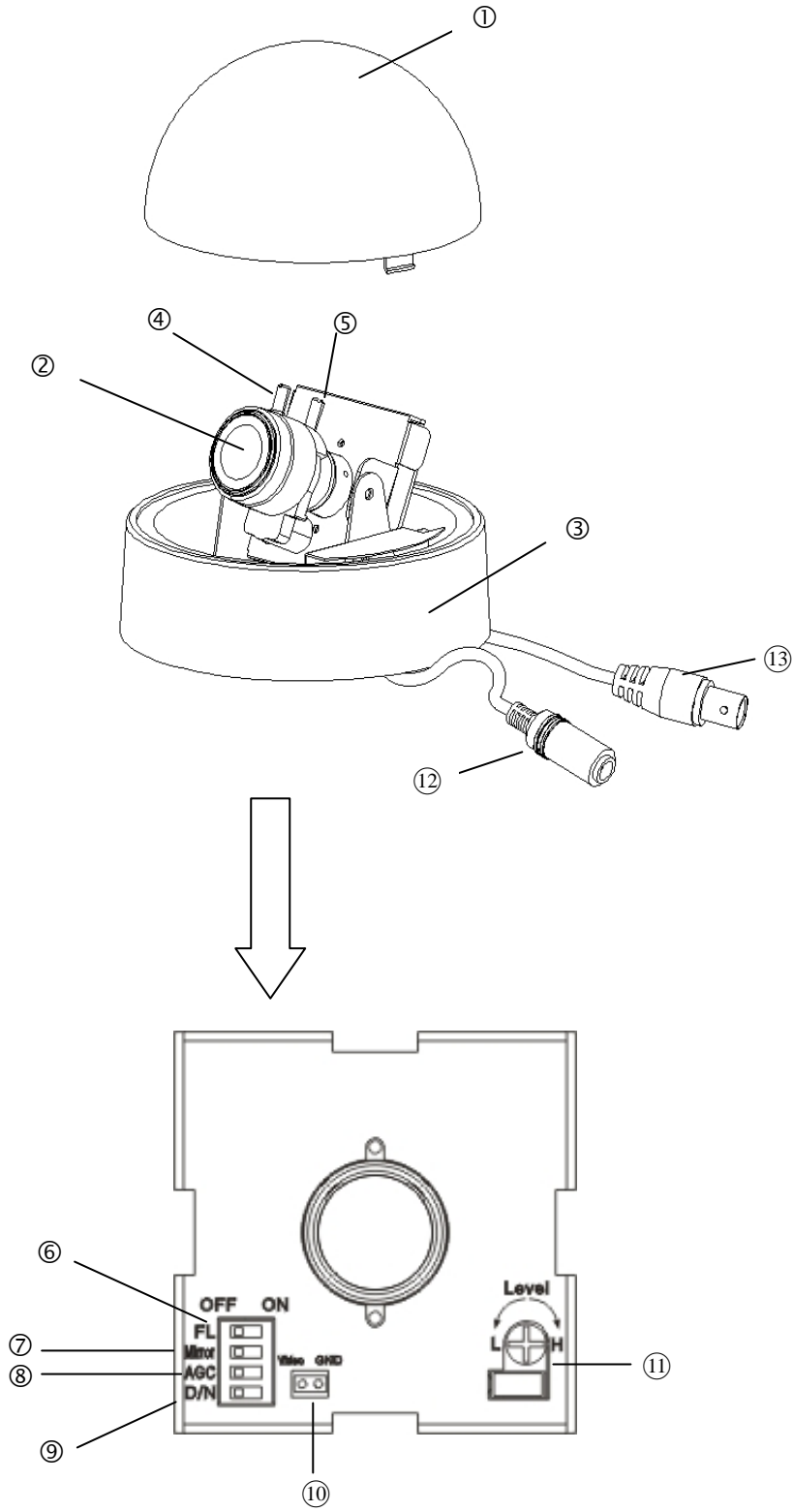
FEATURES

- Designed with advance digital signal processing circuitry for high image quality
- The high sensitivity is achieved by using 1/3" SONY Super HAD interline transfer color CCD
- Built-in vari-focal type, mechanical auto iris lens
- Built-in fixed lens
- Able to adjust the viewing range with manual zoom lens (for vari-focal lens only)
- With manual PAN/TILT mechanism
- FL, Mirror, AGC and D/N functions ON/OFF switchable
- Compact size: 108 mm O.D. x 80 mm H / 4.3" O.D x 3.2" H
- System available for NTSC or PAL

STANDARD ACCESSORIES

- Camera Unit
- Operation Instructions (this document)

MAJOR PARTS NAMES AND FUNCTIONS



① Camera Cover

This cover will protect the camera for avoiding dust and damage.

② Lens

This vari-focal Lens allows users to adjust the Zoom and Focus manually.

Built-in fixed lens: 3.6; 4.3; 6.0 or 8.0 mm

③ Base

The camera unit sets in the dome base, when it is shipping from the factory.

④ Focus Ring (for vari-focal lens only)

To set the focus, and loosen the Focus ring knob, please turn the ring toward <F> or <N> if necessary.

⑤ Zoom Ring (for vari-focal lens only)

If you like to adjust the viewing range, please loosen or tighten the Zoom ring. Turn the ring towards <W> for Zoom out or <T> for Zoom in. When camera setting is finished, please tighten the zoom ring knob.

⑥ Flickerless

The factory setting is FL OFF.

⑦ Mirror

The factory setting is Mirror OFF.

⑧ Auto Gain control on/off switch

The factory setting is AGC ON.

⑨ D/N

The factory setting is D/N OFF.

⑩ Monitor Test Pin

For monitor use. When setting up the camera, connect a monitor to this video output pin and to the GROUND pin using alligator clip cables, then use the image displayed on the monitor, set the surveillance angle.

⑪ Level Volume Control (for vari-focal lens only)

The iris level control for the lens.

⑫ Power input

Please connect the connector of camera to 12VDC or 24VAC power source.

⑬ Video Output BNC Connector

Please connect to the BNC connector of Monitor video in.

INSTALLATION

1. Remove the plastic dome cover.
2. Loosen the two screws of the supporting bracket to remove the camera body.
3. Use four screws to fix the camera base on the ceiling.
4. Put the camera body back to the supporting bracket, then tighten the two screws to fix the camera.
5. Connect the BNC connector of the camera to a color monitor, or other video device through a 75 ohm type coaxial cable with BNC female connector at cable extension.
6. Connect the 12VDC or 24VAC power source to the power jack of camera.

NOTE: Please do not scratch or damage the lens while making any kind of setting.

LENS ADJUSTMENT (For Vari-Focal Lens only)

Zoom and focus adjustments

After the camera is installed, the zoom and focus of the lens must to be adjusted.

1. Loosen the zoom ring knob, and turn the ring towards <W> or <T> if necessary.

W side (Zoom out)

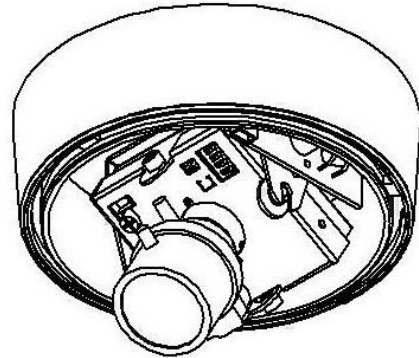
The viewing range will be wider and the target is smaller.

T side (Zoom in)

The viewing range will be smaller and the target is larger.

2. Loosen the focus ring knob, and turn the ring towards <F> or <N> if necessary.

Repeat steps 1 and 2 till the best image had been obtained. When lens setting is completed, please tighten the zoom ring and focus ring knobs.



ADJUSTMENT

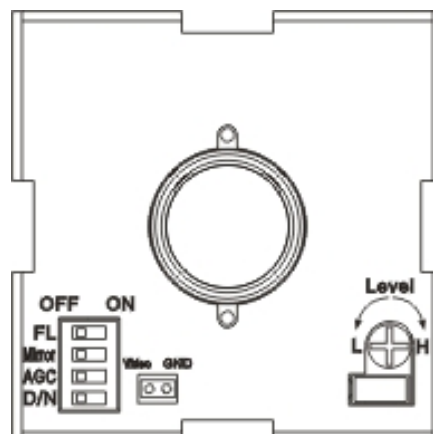
FL (Flickerless)

When picture flicker fiercely, turn FL on, then the camera will stabilize the speed of electronic shutter at 1/100(S)(NTSC) or 1/120(S)(PAL) automatically, and reduce the flicker immediately. The default setting is OFF.

Mirror

Mirror ON: Set a horizontal image inversion.

Mirror OFF: Disable the inversion.



Auto Gain Control Adjustment

AGC ON: The sensitivity increases automatically when the light is low.

AGC OFF: A low-noise picture is obtained when camera is under a low light condition.

D/N (Day/Night)

D/N ON: When light environment is under 5 Lux, the camera will switch to black and white mode. However, when light environment is over 10 Lux, the camera will switch to color mode.

Please be informed that any D/N switch will result a delay of 4~5 seconds.

D/N OFF: Camera stays in color mode.

Note: when AGC setting is OFF, then D/N function will be inactive.

Level Volume Control (for vari-focal lens only)

The iris level of lens can be adjusted by the level control. Turn the level control to the right direction (H) and video images will become brighter. Turn the level control to the left direction (L) and the video images will become darker.

SPECIFICATIONS

Type	ED200E		ED300E	
Pickup Device	1/3" SONY Super HAD CCD			
Video Format	NTSC or PAL			
Scanning System	NTSC: 525 TV lines, 60 fields/sec PAL: 625 TV lines, 50 fields/sec.			
Picture Elements	NTSC: 510(H) x 492(V); PAL: 500(H) x 582(V)		NTSC: 768(H) x 494(V); PAL: 752(H) x 582(V)	
Horizontal Resolution	380 TV Lines		520 TV Lines	
Sensitivity	0.3 Lux/F=1.2		0.4 Lux/F=1.2	
S/N Ratio	Over 48dB (AGC off)			
Electronic Shutter	1/50(1/60)~1/100,000			
*Lens Type	Fixed	Vari-focal lens, Auto Iris f=2.6~6mm f=3.7~12mm,F=1.2 f=9~22mm,F=1.6	Fixed	Vari-focal lens, Auto Iris f=2.6~6mm f=3.7~12mm,F=1.2 f=9~22mm,F=1.6
Iris Level	Auto	Adjustable	Auto	Adjustable
Auto Gain Control	No	ON/OFF Switch	No	ON/OFF Switch
Flickerless	No	ON/OFF Switch	No	ON/OFF Switch
H-Mirror	Auto	ON/OFF Switch	Auto	ON/OFF Switch
Day/Night Mode	Auto	ON/OFF Switch	Auto	ON/OFF Switch
Auto White Balance	Yes			
Gamma Correction	0.45			
Video Output	2 video outputs BNC 1.0Vp-p, 75ohm Additional testing video output 1.0Vp-p, 75ohm			
Sync. Mode	Internal sync			
Power Source	2 types: 12VDC only & 12VDC/24VAC			
Power Consumption	12VDC: 2.5W max 24VAC: 4.5VA max			
Dimensions	108 mm (O.D.) x 80 mm (H) ; 4.3" (O.D.) x 3.2" (H)			
Weight	0.3kg ; 0.7 lbs			
Operating Temperature	0°C~50°C ; 32°F~122°F (20%~80% Humidity)			
Certifications	FCC/CE			

*Lens models and availability vary in different regions

EverFocus Electronics Corp.

Head Office:

12F, No.79 Sec. 1 Shin-Tai Wu Road,
Hsi-Chih, Taipei, Taiwan
TEL: +886-2-26982334
FAX: +886-2-26982380
www.everfocus.com.tw

USA L.A. Office:

1801 Highland Ave. Unit A
Duarte, CA 91010, U.S.A.
TEL: +1-626-844-8888
FAX: +1-626-844-8838
www.everfocus.com

USA N.Y. Office:

415 Oser Avenue Unit S
Hauppauge, NY 11788
TEL: 631-436-5070
FAX: 631-436-5027
www.everfocus.com

Europe Office:


Albert-Einstein-Strasse 1
D-46446 Emmerich, Germany
TEL: 49-2822-9394-0
www.everfocus.de

China Office:

Room B-05D-1, KESHI PLAZA , Shangdi
Information Industry Base,
Haidian District, Beijing China
100085
TEL: +86-10-62973336/37/38/39
FAX: +86-10-62971423
www.everfocus.com.cn

Japan Office:

1809 WBG MARIBU East 18F,
2-6 Nakase.Mihama-ku.
Chiba city 261-7118, Japan
TEL: +81-43-212-8188
FAX: +81-43-297-0081
www.everfocus.com

	<p>Your EverFocus product is designed and manufactured with high quality materials and components which can be recycled and reused. This symbol means that electrical and electronic equipment, at their end-of-life, should be disposed of separately from your household waste. Please, dispose of this equipment at your local community waste collection/recycling centre. In the European Union there are separate collection systems for used electrical and electronic product. Please, help us to conserve the environment we live in!</p>	<p>Ihr EverFocus Produkt wurde entwickelt und hergestellt mit qualitativ hochwertigen Materialien und Komponenten, die recycelt und wieder verwendet werden können. Dieses Symbol bedeutet, dass elektrische und elektronische Geräte am Ende ihrer Nutzungsdauer vom Hausmüll getrennt entsorgt werden sollen. Bitte entsorgen Sie dieses Gerät bei Ihrer örtlichen kommunalen Sammelstelle oder im Recycling Centre. Helfen Sie uns bitte, die Umwelt zu erhalten, in der wir leben!</p>
---	--	--



P/N: MED2G02000