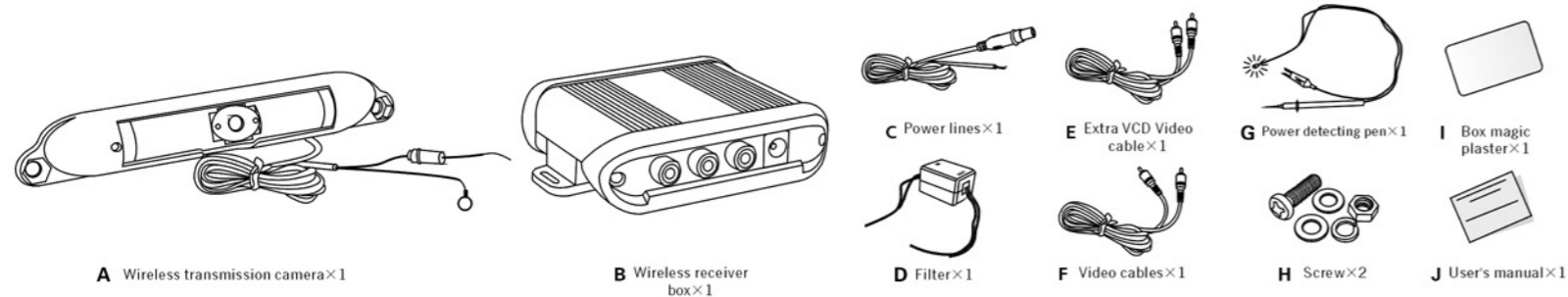
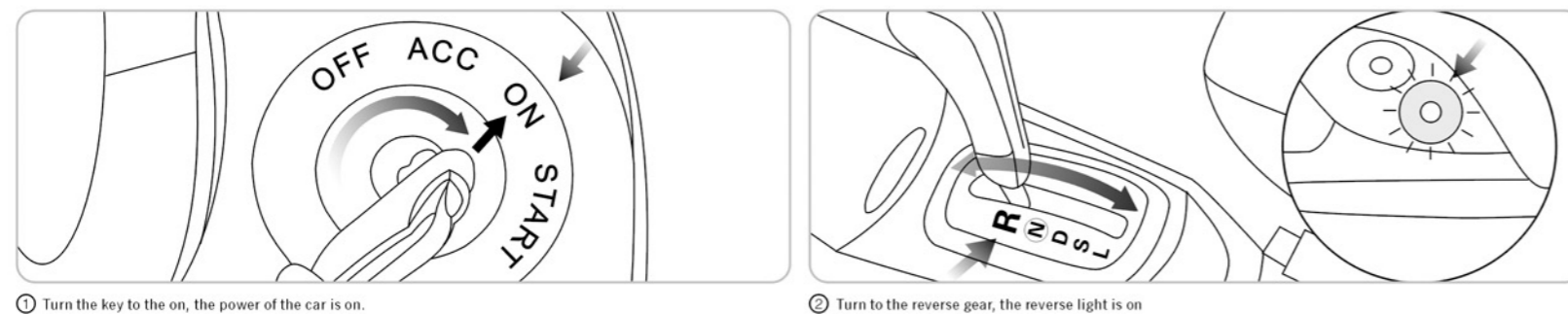


Thank you for your choosing this product

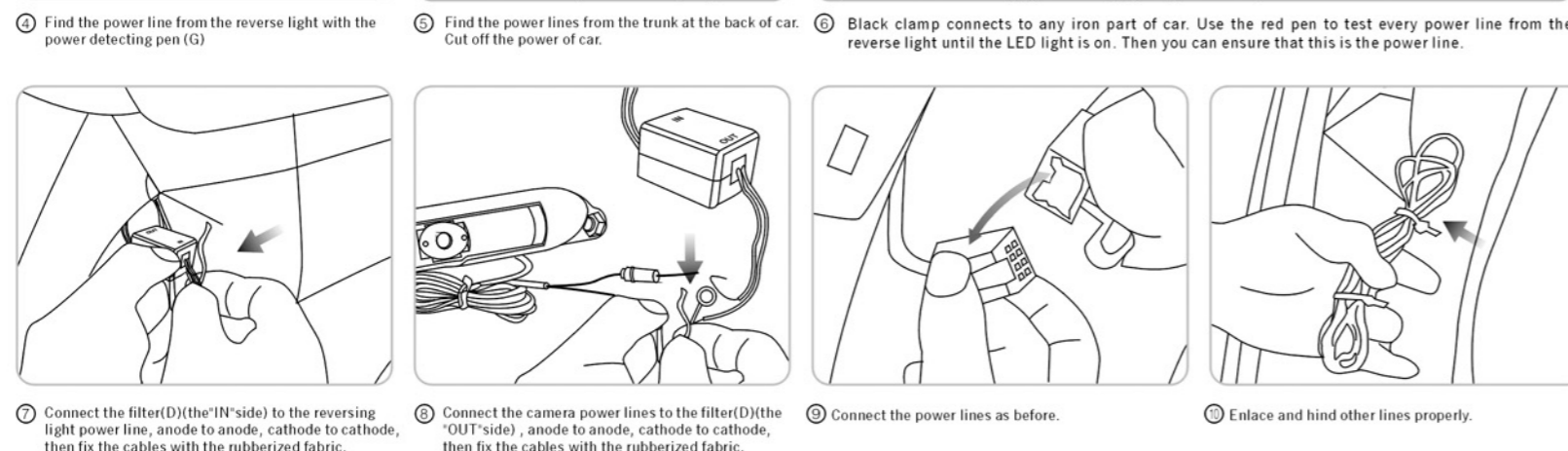
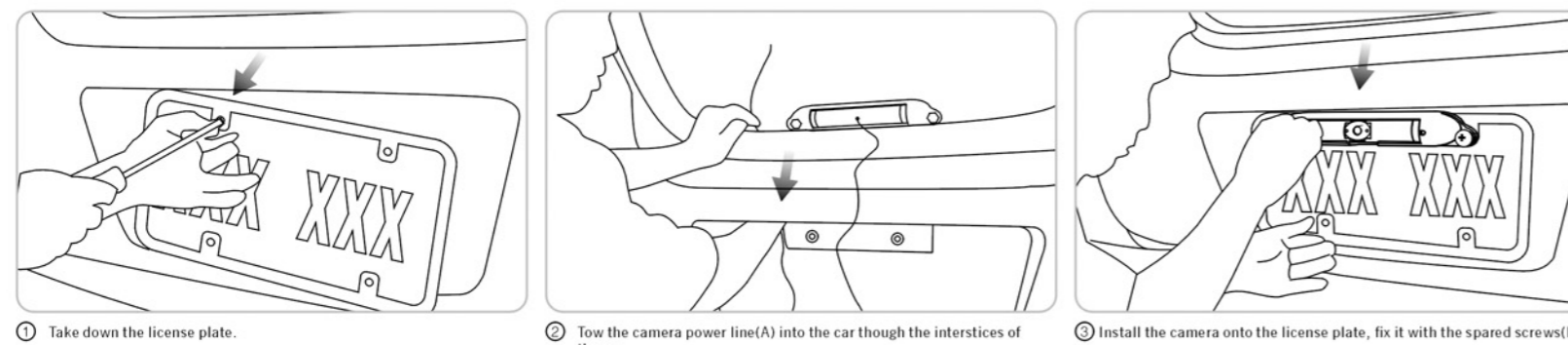
### 1. Parts list



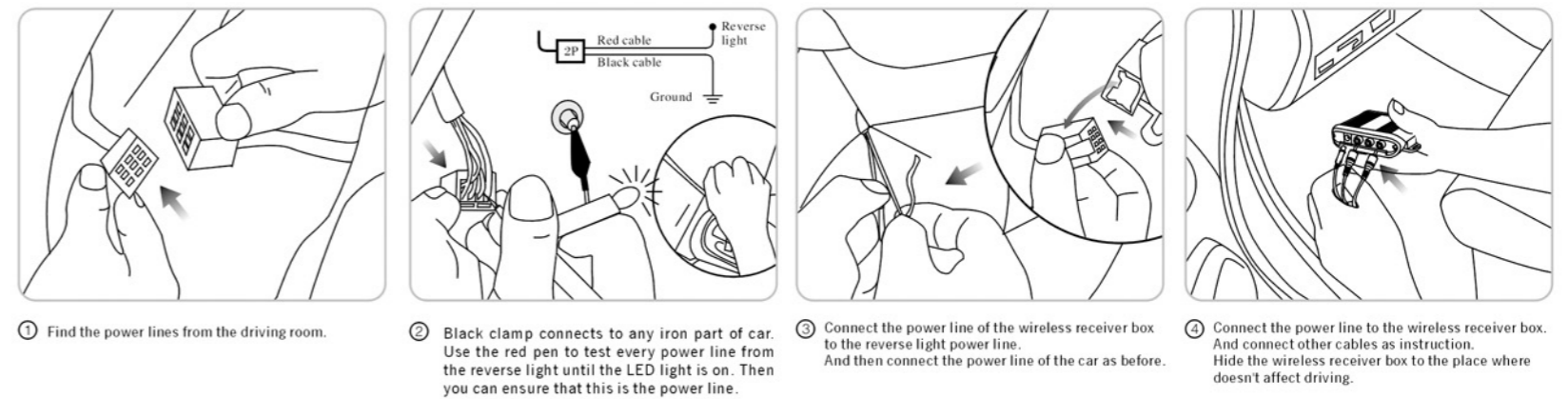
### 2. Preparations



### 3. Camera installation



### 4. Installation of wireless receiver

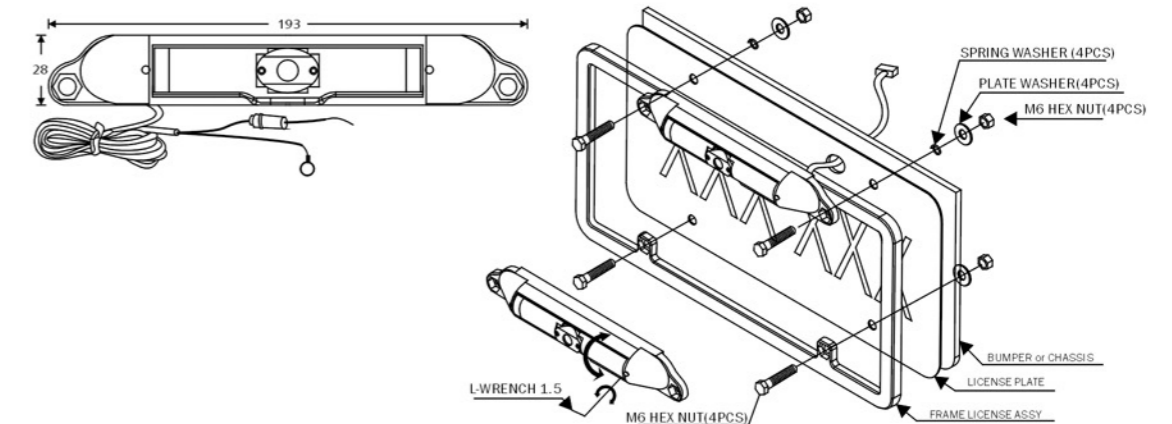


### 5. Camera function introduction

#### Specification

Magar	1/3 DSP Color CCD
Effective pixels	512(H) x 582(V)
Horizontal resolution	420TV lines
Total number of pixels	3200,000
Min. illumination	0.5 Lux at F2.0
Synchronizing system	Internal
Scanning system	2:1 interlaced
Video output	1Vp-p 75ohm
S/n ratio	More than 48db
Electronic iris	1/50 to 1/1000 sec
White balance	AUTO
Gain control	AUTO
Lens mount	2.8 mm pinhole lens
Power source	DC12V
Operating temp	-4°F~+122°F(-20°C~+50°C)
Storage temp	-40°F~+176°F(-40°C~+80°C)
Waterproof	IP67

- Camera with built-in wireless transmitter
- 2.4G wireless frequency

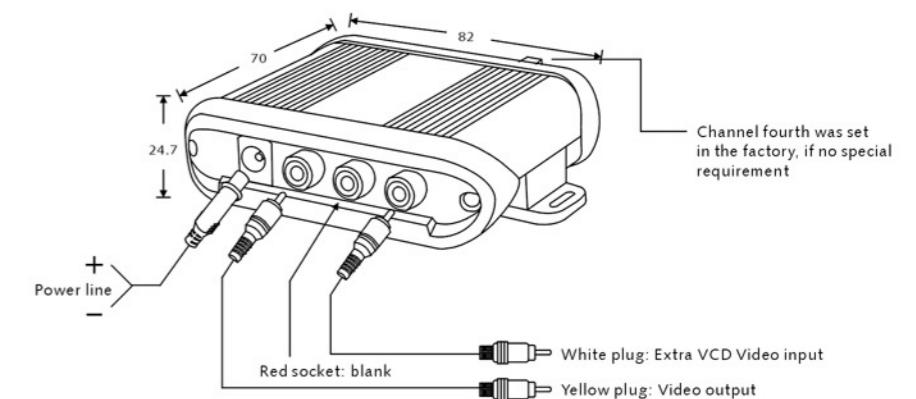


### 6. Receiver box function introduction

#### Specifications:

1. CCD camera with built-in wireless transmitter
2. Wireless transmission frequency: 2.4G main channel (Channel 4th was set in the factory if no special requirement)
3. Current consumption: Wireless receiver: 180mA

Transmitting type	FM
Output image standing wave ratio	2 : 1
Transmission power	9 dBm
Video input	1Vp-p 75 Ohm
Audio input	1Vp-p 600 Ohm
Audio minus carrier wave	6.5MHz
Current consumption	100 mA(max)
Working temperature	-30°C~80°C ( Humidity<95%)
Storage temperature	-40°C~100°C ( Humidity<95%)



### 7. Testing

