



# Setup Guide

Everything you need to get going with your new Xsight™ Touch remote control:

- >> *Out of the Box*
- >> *Installing the EZ-RC™ Remote Control Setup Wizard*
- >> *Creating Activities*
- >> *Creating Favorites & Profiles*
- >> *Troubleshooting*

## Out of the Box

## Quick Look:

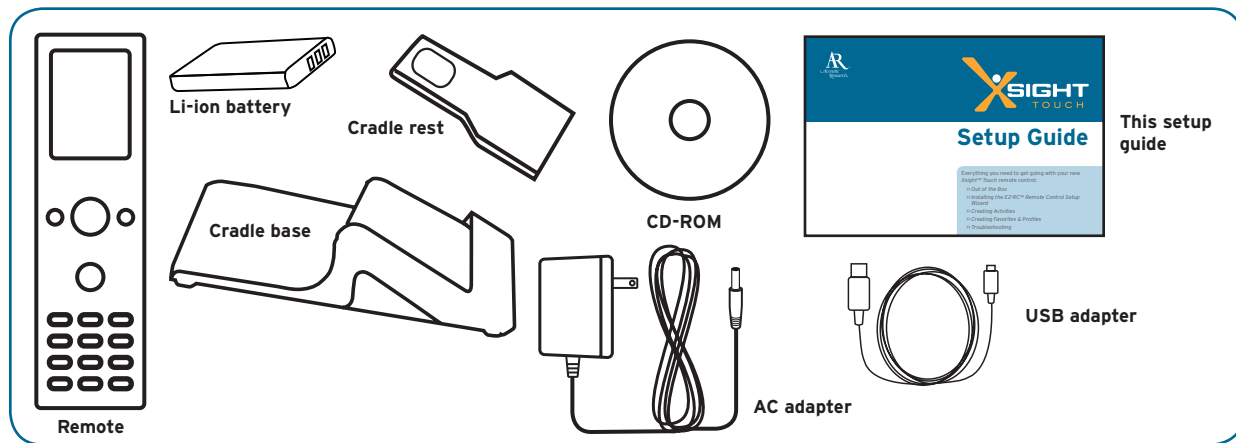
- › Unpack
- › Charge the remote
- › Get to know the interactive touchscreen
- › Remote setup
- › On-remote setup of TVs, A/V components, and other devices

### What you'll be doing by the end of this section:

## Controlling your home theater devices

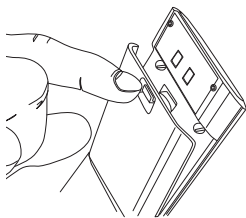
## 1 Unpack

The first step is to make sure you've got the following parts in your package:

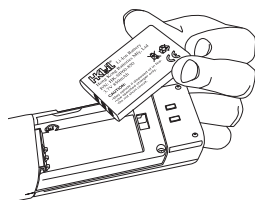


## 2 Charge the remote

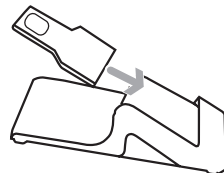
The next step is to install the *Xsight™ Touch*'s rechargeable battery, plug in its cradle, and let it charge for 3 to 4 hours.



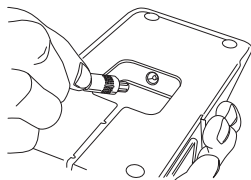
**Remove the battery door** from the back of the *Xsight™ Touch*. Press up on the latch to release the door.



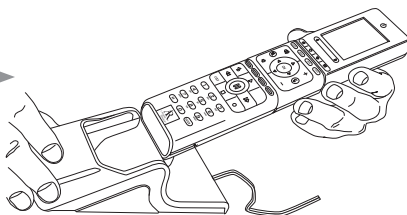
**Install the rechargeable battery** in the *Xsight™ Touch*'s battery compartment and replace the battery door.



**Assemble the charging cradle** by sliding the cradle rest into the cradle base as shown here.



**Plug the AC adapter into the cradle** as shown. Plug the other end of the adapter into a wall outlet or surge protector.



**Place the remote in the cradle** and leave it to charge for 3-4 hours.

You can use the remote right away (battery's charged), but we recommend full charge before first use—3-4 hours.

### ***Need help setting up this remote?***

Please call our help line toll-free at 1-800-276-0509.



## The interactive touchscreen

The top of the Xsight™ Touch features a customizable touch screen that can be set up using keys on the remote or by connecting the remote to your PC.



To use the functions displayed, simply touch the screen where the function is.



To move between the pages, push your finger along the slider bar. Multiple pages will wrap around—if you scroll right to the last page, scrolling right again will take you back to the first page.

The top of the remote also offers **Shortcut keys** to give you one-touch access to some of the remote's advanced functions:



**(Home/Back)** goes back one screen in the menus. Holding this key down for two seconds takes the remote to the Home Screen.



**(Favorites)** accesses the Favorites screen directly.



**(Activities)** accesses the Activities screen directly.

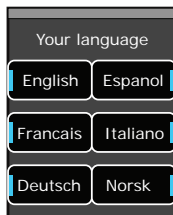


**(Devices)** accesses the Devices screen directly.



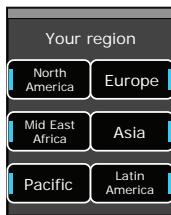
### 3 Remote Setup

Once the remote has finished charging, pick it up from its cradle. The *Xsight™ Touch* has sensors that wake the LCD screen up automatically (you can also wake it up by pressing a key). The *Xsight™ Touch* has screens that guide you through the initial setup process.



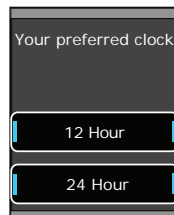
#### Set Language

Press the language you want the remote's menus to appear in (probably **English**).



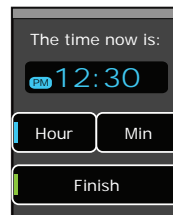
#### Set Region

Press the region where you live (**North America**).



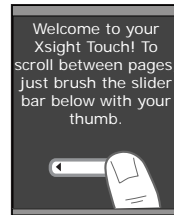
#### Set Your Preferred Clock

Press the way you'd like the clock on your remote to appear: **12 hour** (like 2:30 PM) or **24 hour** (14:30).



#### Set Time


Press the **Hour** and **Min** on-screen keys to adjust the time showing on the screen. Press **Finish** when you're done.




#### Tutorial

The next few screens take you through a quick tutorial to get you familiar with the touch screen. Use the scroll bar to go through the screens.

#### Screens in the wrong language?

You can change the setting by pressing the  (Home/Back) key to go back one or more screens in the setup routine.

#### Make a mistake?

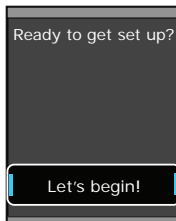
You can change the setting by pressing the  (Home/Back) key to go back one or more screens in the setup routine.

## 4 On-Remote Device Setup

The *Xsight™ Touch* lets you set up your devices in seconds, right on the remote, with a built-in library of codes for the most popular models of the most common home theater devices: DVD players, plasma and LCD HDTVs, and much more.

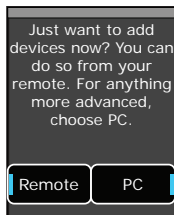
**Note:** If you quit setup after setting the time, you can access device setup through the Settings menu on the remote. In the Home screen, choose **Settings** (it's on the second page of the Home screen—use the slider bar to access it). Then press **Device Setup** and **Add Device**, and follow the instructions.

**Note:** On-remote device setup supports the most popular models of the most popular brands. The EZ-RC™ Remote Control Setup Wizard handles everything else! So, if you don't see your brands listed in the on-remote device setup—or if the remote isn't controlling all of your device's functions—you can set up your device using your PC and the EZ-RC™ Remote Control Setup Wizard. See the sections that follow for information.



### *After the tutorial, press “Let’s begin!”*

After the remote's tutorial screens, the remote asks if you're ready to get set up. Press **Let's begin!**



### *Press “Remote.”*

The remote asks if you want to set up devices on your remote or using your PC. To use the on-remote setup, press **Remote**.

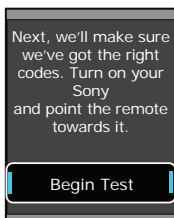
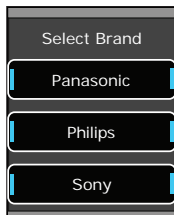
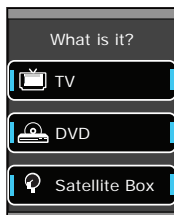
To begin setting up your first device, press **Add Device** on the screen that follows.

**Don't see your device?**

Try the EZ-RC™ Remote Control Setup Wizard! On-remote device setup supports the most popular models of the most popular brands. The EZ-RC™ Remote Control Setup Wizard handles everything else! So, if you don't see your device listed in the on-remote device setup, you can set it up using your PC and the EZ-RC™ Remote Control Setup Wizard. See the sections that follow for information.

**Don't see your brand?**

Try the EZ-RC™ Remote Control Setup Wizard! On-remote device setup supports the most popular models of the most popular brands. The EZ-RC™ Remote Control Setup Wizard handles everything else! So, if you don't see your brand listed in the on-remote device setup, you can set it up using your PC and the EZ-RC™ Remote Control Setup Wizard. See the sections that follow for information.

**Choose the kind of device you want to set up.**

Use the slider bar to go through the pages of devices. When you see the kind of device you want to set up, press the on-screen key for that device (TV, DVD, etc.).


**Choose your device's brand.**

Use the slider bar to go through the pages of brands for this device. When you see your brand, press its on-screen key.

**Test your codes.**

Now the remote will take you through steps to test which of the codes in the remote's library is the best one to use with your device. Turn on your device manually, point the remote toward it, and press **Begin Test**.

**To go back a screen:**

Press the  (Home/Back) key to go back one or more screens in the setup routine.

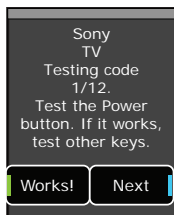
### Can't find a code that works your device (or one that does everything you want it to do)?

Use the EZ-RC™ Remote Control Setup Wizard! The setup wizard lets you enter your device's model number to find exactly the right code for your device.

If you find a code that does most of what you want to do with a device, you can learn additional keys from your original remote through the remote's Settings menu (see the remote's user manual for instructions).

### Tips for setting up devices

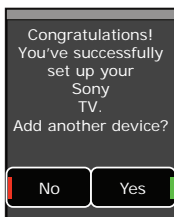
- Always point the remote directly at the device you're trying to control.
- It may take a few seconds for your device to respond to a command (especially on or off). Be patient between presses—give your device a few seconds to respond.
- Some brands of devices do not use a POWER key to turn the device on or off. Instead they use separate POWER ON and POWER OFF keys. Check your devices' original remotes to see if any of them have these separate power keys. If they do, use other keys (volume, channel, or number keys) to test codes in this step.



First, test the  (Power) button on the remote.

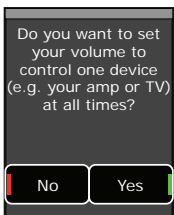
If your device turns off, try several other keys on your remote to make sure this code gives you all the functionality you want for this device. For example, if you're testing a code for your DVD player, you definitely want the transport keys to work (play, stop, fast forward, etc.). So you should test at least these keys for a DVD player.

If the other keys on the remote work for your device, press **Works!** If the other keys don't work, press **Next** to try the next code in the library.



### More devices?

Once you've found a code that works for your device, the remote asks if you want to add another device. Press **Yes** to add another device (or press **No** if you're done for now).





### Set master volume (for devices with audio control)

If you've set up an audio receiver, the remote asks you if you want to set a device as the Master Volume control once you've finished setting up devices on your remote.

You should answer **Yes** only if you *always* change volume using the same device for *all* your devices.

### How to see what you've set up so far

If you're not sure what devices you've already added to the remote, press the  (Devices) shortcut key on the remote at the beginning of device setup (in the "What is it?" or "Select brand" screens). Use the slider bar to browse through the devices you've already programmed. Then press the  (Home/Back) key to go to the Home screen, use the slider bar to see the second page, press Settings, then Device Setup, and finally Add Device to set up more devices.

If you sometimes use other devices to change volume, answer **No** in this screen—you'll have a chance to set up master volume for specific activities (like when you're watching a movie) later.

## Using the remote

Now you're ready to start using the *Xsight™ Touch* with your home entertainment devices.

The **home screen** of the *Xsight™ Touch* is your gateway to the remote's full functionality. The home screen has the following options:

- **Favorites**
- **Activities**
- **Devices**
- **Settings** (on the second page of the screen—use the slider bar below the screen to access this option)

The **slider bar** lets you move between pages and menus on the remote screen. Slide your finger to the left or right to move.

The **shortcut keys** access the home screen options directly.

The **hard keys** on the bottom of the remote work much like the keys on your original remotes.



# Installing the EZ-RC™ Remote Control Setup Wizard

## Quick Look:

- > System Requirements
- > Install the EZ-RC™ Remote Control Setup Wizard
- > Launch the EZ-RC™ Remote Control Setup Wizard
- > Sign in
- > Connect your remote

## What you'll be doing by the end of this section:

Using the EZ-RC™ Remote Control Setup Wizard to set up your remote's advanced features.

## 1 Make sure your PC satisfies system requirements

### Minimum hardware requirements

- USB 2.0 port
- CD-Rom drive
- Internet connection

### Minimum software requirements

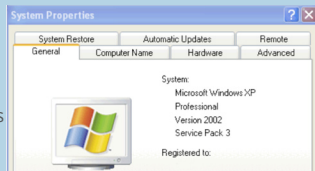
- Windows XP, Windows Vista, or Windows 7 (does not support Windows 2000)
- Internet Explorer 6.0 or later (does not support Firefox or Safari)

## IMPORTANT NOTE FOR WINDOWS XP USERS:

**You must have Service Pack 3 and .Net 3.5**

To find out what service pack version you have:

1. Right click on My Computer on your PC desktop.
2. Choose Properties from the drop-down menu.
3. In the General Tab, the Service Pack is listed under System.



### To update to SP3:

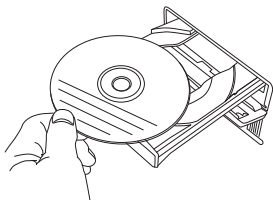
1. Insert the CD that came with the remote. The CD goes automatically to Microsoft update site if you have a working internet connection.
2. At the Microsoft website, click Express to begin the updating process. The Microsoft site checks your computer (this takes about 5-10 minutes).
3. The Microsoft site will tell you which updates you need to install. Follow the Microsoft site and installation wizard instructions to download and install updates.

### How long will this take? (depending on connection speed)

If you have SP1: 1 hour to update to SP2; an additional 30 mins for SP3  
If you have SP2: 30 mins for SP3

4. Close all internet browser windows and continue with EZ-RC install.

## ② Install the EZ-RC™ Remote Control Setup Wizard



Insert the **CD-ROM** that came with your *Xsight™ Touch* into your PC. The EZ-RC™ installation program should start automatically after a minute or so.

Follow the **CD-ROM's on-screen instructions** to install the EZ-RC™ Remote Control Setup Wizard.

### *What if my CD doesn't start installation automatically?*



1. Open the CD and double-click on the icon shown here.
2. If you have Windows XP and need Service Pack 3, see the Important Note for Windows XP users on the previous page (Vista users do not need this kind of update).

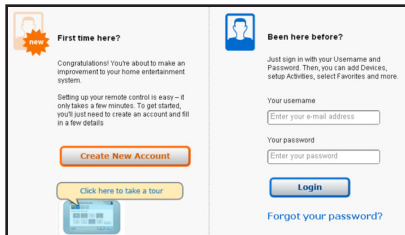
## ③ Launch the EZ-RC™ Remote Control Setup Wizard.



Double-click on the EZ-RC™ Remote Control Setup Wizard icon on your PC desktop.

**Note:** Proxy servers, like those used in many business networks, may affect the performance of the EZ-RC™ Remote Control Setup Wizard. For best results, use the EZ-RC™ Remote Control Setup Wizard with a direct internet connection (for example, your home connection).

## ④ Sign into the EZ-RC™ Remote Control Setup Wizard.



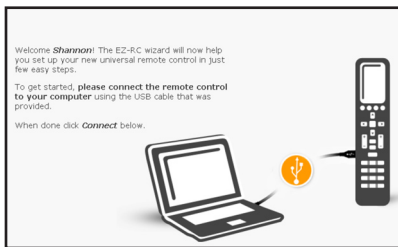
The first time you access the EZ-RC™ Remote Control Setup Wizard, you will need to register so that you can save your remote's settings. Click **Create New Account**.

Once you've created your account, you can use your username and password to sign in.

### *Need help setting up this remote?*

Please call our help line toll-free at 1-800-276-0509.

## 5 Connect your remote when prompted

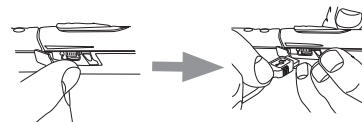


### If you see a progress bar in the corner of the screen...

It means your remote's firmware is being updated. Don't disconnect the remote! The Xsight™ Touch is constantly being updated and improved, to get the latest codes and provide the most advanced functionality available.



Use the USB cable that came with your remote to connect it to a USB port on your computer.



### How do I know if the remote's connected?

Look for the green arrow icon in your PC's status bar.

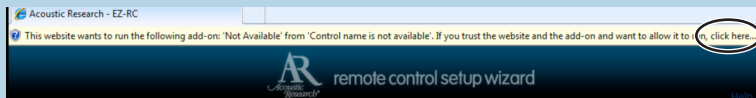
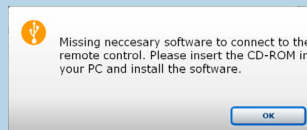


### If you see this error message...

You need to change your ActiveX settings in Internet Explorer for the EZ-RC™ Remote Control Setup Wizard to work.

#### To change settings ActiveX settings:

1. Click OK in the "Missing necessary software..." dialog box.
2. Locate the yellow warning bar just above the AR remote control setup wizard page (shown below).

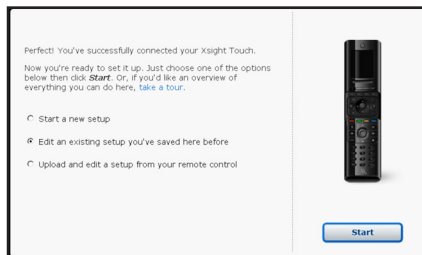


3. Click where it says "click here" on the yellow warning bar to change the Active X setting.
4. Click the Connect button again at the bottom of the screen.

### Why ActiveX controls are necessary

The EZ-RC™ Remote Control Setup Wizard uses ActiveX controls to give you an enhanced user interface, with straightforward access to the remote's advanced features and seamless integration with the remote itself.





In the first setup screen after you've connected your remote, check the **Upload and edit a setup from your remote** option.



Then confirm that you want to proceed. This tells the EZ-RC™ Remote Control Setup Wizard that you want to save the settings you created during the on-remote setup.

**Upload Remote Configuration**

It appears that you have added device(s) to your remote control. To help us provide better support, we encourage you to fill in the missing model information.

Devices	Device Type	Brand	Device Model Number	Remote Model Number
Sony TV	Television	Sony	<input type="text"/>	<input type="text"/>
Onkyo DVD	Video - DVD	Onkyo	<input type="text"/>	<input type="text"/>
DirecTV Satellite Box	Satellite Set Top Box	DirecTV	<input type="text"/>	<input type="text"/>
Harman/Kardon Audio	Audio - Receiver	Harman/Kardon	<input type="text"/>	<input type="text"/>

If you're uploading new device information (like the new devices you set up in the on-remote setup), the final screen before the EZ-RC™ Remote Control Setup Wizard Main Menu asks for the model numbers of these devices.

For the best experience with your *Xsight™ Touch* remote, we recommend you add this information. This will allow the setup wizard to give you the full functionality for your exact models.

### Need help setting up this remote?

Please call our help line toll-free at 1-800-276-0509.

# Activities

## Quick Look:

- > Set up the Hello activity (all on)
- > Set up the Good Night activity (all off)
- > Set up a Watch Movie activity
- > Set up a Watch Satellite or Cable activity

## What you'll be doing by the end of this section:

Controlling your entire home entertainment system with one touch.

## Set up your first activities

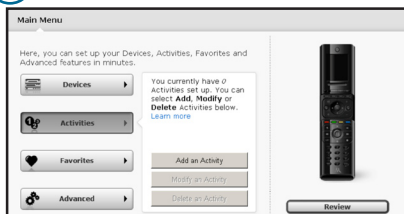
Activities give you one-touch control over your entire home theater...watch movies, your favorite TV shows, listen to music, all with the touch of a button. This chapter gets you started. This is how it works:

- a Hello activity turns on all your home theater devices automatically when you're ready to start enjoying them
- customized activities to Watch Movies, Watch Satellite or Cable, Listen to Music, etc. let you switch seamlessly between your favorite TV shows and DVDs
- when you're finished enjoying your home theater, a Good Night activity turns everything off for you

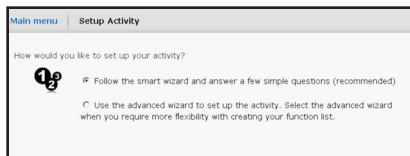
## Setting up the Hello activity (all on)

The Hello activity is a very important first step to get the most from activities on your *Xsight™ Touch*. Different devices require different amounts of time to warm up before they can be used, which can interfere with the functioning of multi-step activities like Watch Movie, which you'll set up later in this section. The Hello activity makes sure everything is on and ready for action when you want to use it.

## 1 Add a Hello activity.



In the main menu, click **Activities** and select **Add an activity** from the submenu.



### Choose Smart Wizard

Then click the **Next** button to continue.

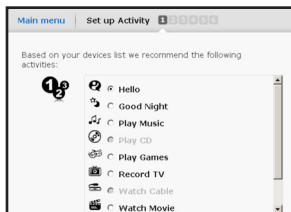
A screen appears showing you the steps you'll go through to set up the activity using the Smart Wizard. Click the **Next** button at the bottom of the screen to continue.

### Why Smart Wizard?

There are two ways to set up Activities: the Smart Wizard and the Advanced Wizard. The Smart Wizard is much easier for simple activities, like turning everything on or off. The Advanced Wizard is better for more complicated tasks.

### Choose the activity you want to set up (Hello)

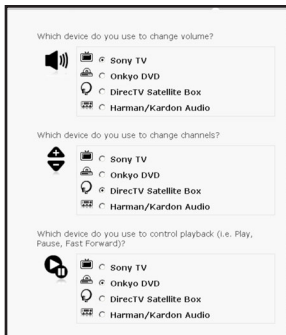
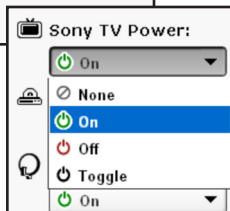
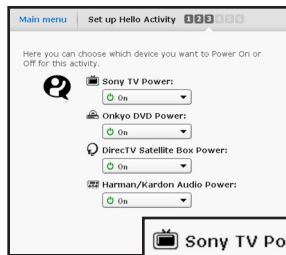
The next screen shows you a list of activities you can set up. Choose **Hello**. Click the **Next** button at the bottom of the screen to continue.



### Name the activity

The next screen lets you customize the name of this activity. Type in a new name for this activity or leave it as "Hello". Then click the **Next** button at the bottom of the screen to continue.

## 2 Configure the Hello activity for your devices.



### Set the power on commands

Once you've given the Hello activity the name you want (or left it as "Hello"), the next Wizard screen lets you set how each of your devices are powered on.

Use the pull-down menu for each device to set that device's power-on command. The options are:

**None** Use this option if you want to leave a device out of the Hello activity (for example, if the device is in another room).

**On** Use this option if the remote that originally came with this device has separate ON and OFF keys (not a single POWER key).

**Off** Since this option turns your devices off, we won't use it now.

**Toggle** Use this option if the remote that originally came with this device has a single POWER (or ON/OFF) key.

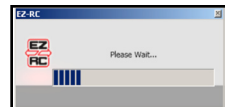
Once you've set the power-on command for each of your devices click the **Next** button at the bottom of the screen to continue.

### Set volume/channel/playback controls

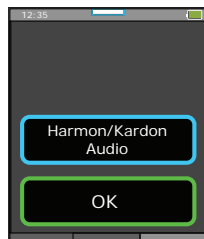
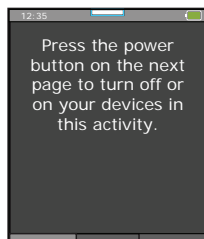
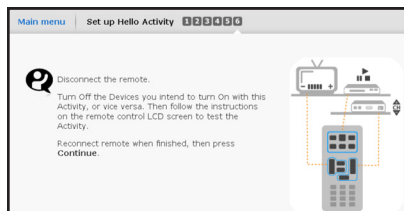
The next setup screen for the Hello activity lets you set which devices you use to change volume and channels, and control playback in your home entertainment system.

Once you've set the devices you want to control volume, channel selection, and playback, click the **Next** button at the bottom of the screen to continue.

After you click **Next**, the EZ-RC™ Remote Control Setup Wizard prepares your remote to test the activity with your home theater system.



### 3 Test the Hello activity with your devices.



Once your remote is ready to test, the screen to the right appears.

Carefully disconnect the remote from your PC. The remote screens guide you through testing this activity.

#### **Read about the test**

The first screen gives you some information about the test. Use the slider to go to the next screen.

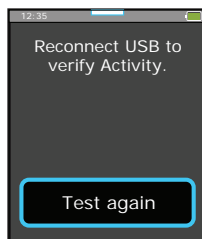
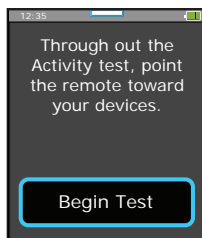
**IMPORTANT:** Make sure all your devices are off before you start.

#### **Test individual power commands**

The second screen lets you test the power command you set for each device. Press the on-screen remote button for each device to see if it turns that device on. (If it does, make sure you turn it back off!) Only the first three devices are shown on this page. Use the slider to test the rest of your devices.

**IMPORTANT:** If you notice one of your devices does not respond to the power command, make a note—you will need to change the power command you give to that device.

Under your last device, there's is an on-screen **OK** button. Press **OK** to continue with the test.



## Test the entire activity

The next screen lets you test the Hello activity with your entire system.

**IMPORTANT:** Make sure all your devices are off before you start. Also make sure your remote is pointed directly at your home theater. Then press **Begin Test**. The screen says "Sending" while the remote is sending the power commands.

## Did it work?

The next screen asks if the activity worked—if your devices turned on.

**If it worked:** Reconnect the remote to your PC (see the heading below).

**If it didn't work:** Make sure your remote is pointed directly at your home entertainment devices and that there's nothing obstructing path, then press **Test again** button. **IMPORTANT:** Make sure all your devices are off before you start. Test each device by pressing its on-screen soft key. Then press **OK** to proceed and **Begin test** to test the entire activity again.

Try several times with the remote in different positions. If it still doesn't work, go ahead and reconnect to PC to troubleshoot and correct the activity.



## Reconnect the remote to your PC

Once you've reconnected the remote, press **Continue** on the EZ-RC™ Remote Control Setup Wizard screen.

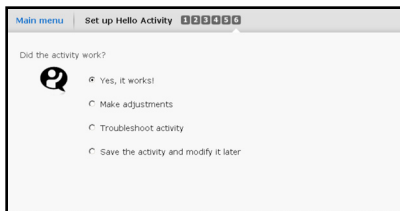
## How do I know the remote's connected?



Look for the green arrow icon in your PC's status bar.

## 4 Finish up the activity.

If the activity worked with your remote, you're just a step from the finish. If the activity did not work as you thought it should, you can use the EZ-RC™ Remote Control Setup Wizard to make adjustments or troubleshoot.

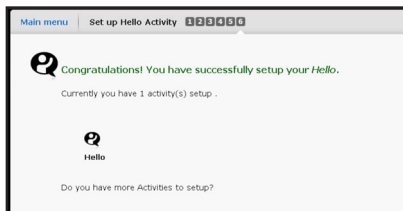


Select **Yes** if the activity worked.

Select **Make adjustments** if you know what needs to be changed (for example, if you noticed one of your devices didn't turn on).

Select **Troubleshoot** if you're not sure what needs to be changed.

Select **Save activity and modify later** if the activity didn't work as you wanted it to, but you would rather come back to it and troubleshoot or modify later.



Press **Next** when you've made your selection.

The final screen confirms that you've set up your first activity, Hello.

Click **Yes** to set up the next activity, "Good Night."

### ***If you add devices later...***

Don't forget to come back to your Hello activity and add their power commands as well to turn them on!

### ***Need help setting up this remote?***

Please call our help line toll-free at 1-800-276-0509.

# Setting up the Good Night activity (all off)

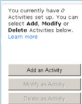
## 1 Add a Good Night activity.



### Choose Smart Wizard.

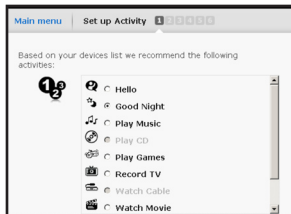
Then click the **Next** button to continue.

A screen appears showing you the steps you'll go through to set up the activity using the Smart Wizard. Click the **Next** button to continue.



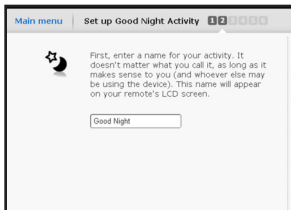
If you're re-accessing the EZ-RC™ Remote Control Setup Wizard, go to the Main Menu and click **Activities**. A submenu appears next to the menu button. Select **Add an Activity**.

Then continue with the steps that follow to set up the Good Night activity.



### Choose the activity you want to set up (Good Night)

The next screen shows you a list of activities you can set up. Choose **Good Night**. Press the **Next** button to continue.



### Name the activity

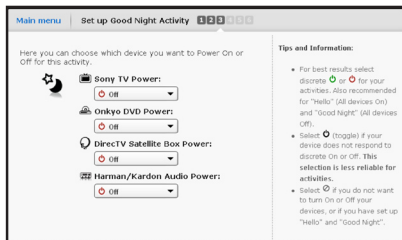
The next screen lets you customize the name of this activity. Type in a new name for this activity or leave it as "Good Night". Then click **Next**.

### Why Smart Wizard?

There are two ways to set up Activities: the Smart Wizard and the Advanced Wizard. The Smart Wizard is much easier for simple activities, like turning everything on or off. The Advanced Wizard is better for more complicated tasks.

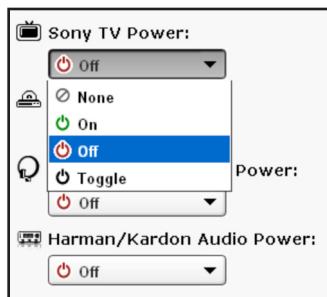


## 2 Configure the Good Night activity for your devices.



### Set the power off commands

Once you've given the Good Night activity the name you want (or left it as "Good Night"), the next Wizard screen lets you set how each of your devices are powered off.



Use the pull-down menu for each device to set that device's power-off command. The options are:

**None** Use this option if you want to leave a device out of the Good Night activity (for example, if the device is in another room).

**On** Since this option turns your devices on, we won't use it now.

**Off** Use this option if the remote that originally came with this device has separate ON and OFF keys (not a single POWER key).

**Toggle** Use this option if the remote that originally came with this device has a single POWER (or ON/OFF) key.

Once you've set the power-off command for each of your devices click **Next** to continue.

After you click **Next**, the EZ-RC™ Remote Control Setup Wizard prepares your remote to test the activity with your home theater system.



### 3 Test the Good Night activity with your devices.



Once your remote is ready to test, the screen to the right appears.

Carefully disconnect the remote from your PC.

The remote screens guide you through testing this activity.



#### **Read about the test**

The first screen gives you some information about the test. Use the slider to go to the next screen.

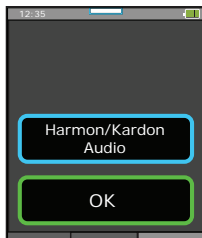
**IMPORTANT:** Make sure all your devices are on before you start.

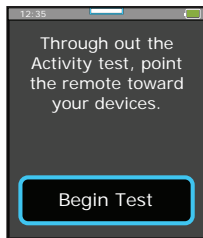
#### **Test individual power commands**

The second screen lets you test the power command you set for each device. Press the on-screen remote button for each device to see if it turns that device off. (If it does, make sure you turn it back on!) Only the first three devices are shown on this page. Use the slider to test the rest of your devices.

**IMPORTANT:** If you notice one of your devices does not respond to the power command, make a note—you will need to change the power command you give to that device.

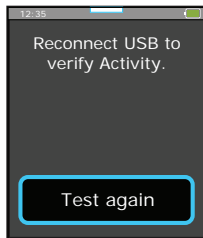
Under your last device, there's an on-screen **OK** button. Press **OK** to continue with the test.





### Test the entire activity

The next screen lets you test the Good Night activity with your entire system. **IMPORTANT:** Make sure all your devices are off before you start. Also make sure your remote is pointed directly at your home theater. Then press **Begin Test**. The screen says "Sending" while the remote is sending the power commands.



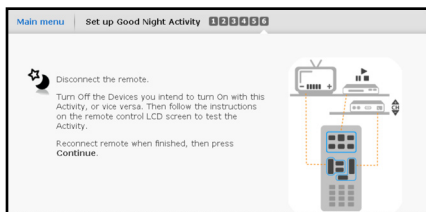
### Did it work?

The next screen asks if the activity worked—if your devices turned off.

**If it worked:** Reconnect the remote to your PC (see the heading below).

**If it didn't work:** Make sure your remote is pointed directly at your home entertainment devices and that there's nothing obstructing path, then press **Test again** button. **IMPORTANT:** Make sure all your devices are off before you start. Test each device by pressing its on-screen soft key. Then press **OK** to proceed and Begin test to test the entire activity again.

Try several times with the remote in different positions. If it still doesn't work, go ahead and reconnect to PC to troubleshoot and correct the activity.



### Reconnect the remote to your PC

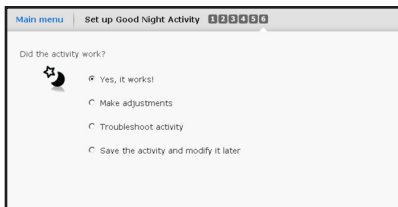
Once you've reconnected the remote, press **Continue** on the EZ-RC™ Remote Control Setup Wizard screen.

### How do I know the remote's connected?



Look for the green arrow icon in your PC's status bar.

## 4 Finish up the activity.



If the activity worked with your remote, you're just a step from the finish. If the activity did not work as you thought it should, you can use EZ-RC™ to make adjustments or troubleshoot.

Select **Yes** if the activity worked.

Select **Make adjustments** if you know what needs to be changed (for example, if you noticed one of your devices didn't turn on).

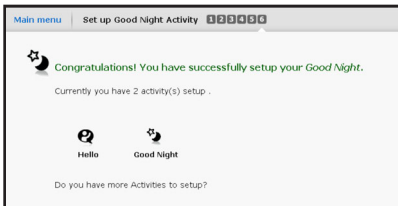
Select **Troubleshoot** if you're not sure what needs to be changed.

Select **Save activity and modify later** if the activity didn't work as you wanted it to, but you would rather come back to it and troubleshoot or modify later.

Press **Next** when you've made your selection.

The final screen confirms that you've set up your second activity, Good Night.

Click **Yes** to set up your next activity (like Watch Movie or Watch satellite or cable).



### *If you add devices later...*

Don't forget to come back to your Good Night activity and add their power commands as well to turn them off!

## Setting up a Watch Movie activity

The next activities, Watch Movie and Watch Satellite (or Watch Cable), are different from the Hello and Good Night activities. For these activities, you will use the Advanced Wizard. The Advanced Wizard gives you more options to customize these activities to fit exactly the way your home theater is set up. But you should gather a little information about your devices before setting up the device in the EZ-RC™ Remote Control Setup Wizard.

### 1 Write down which devices you use to Watch Movies.

Look at the following example setup for “Watch Movie”, then fill in the information for this activity in your home theater.

Example setup	What device do you use to...		
	Control volume?	Watch video?	Control playback?
Watch Movie	A/V receiver	TV	DVD player

YOUR setup	What device do you use to...		
	Control volume?	Watch video?	Control playback?
Watch Movie			

### 2 Write down how you access those inputs with your original remotes.

Look at the following example setup for a “Watch Movie” activity. Then fill in the information for the activity in your home theater.

Example setup	Keypresses to watch/listen to a movie
A/V receiver	HDMI1 key
TV	INPUT, down arrow, ENTER

YOUR setup	Keypresses to watch/listen to a movie

**IMPORTANT:** If you always use the same input on any of your devices, you don’t need to include this device in the Watch Movie activity—it should already be on the correct input.

### 3 Add a new activity in the EZ-RC™ Remote Control Setup Wizard.



#### Choose Advanced Wizard

For the Watch Movie activity, choose the Advanced Wizard and click the **Next** button to continue.

A screen appears showing you the steps you'll go through to set up the activity using the Advanced Wizard. Click the **Next** button to continue.

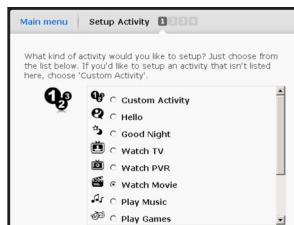
#### Why Advanced Wizard?

The Advanced Wizard is better for Watch and Listen activities because it is more flexible, allowing for the wide variety of setups possible with today's advanced audio/video systems.



If you're re-accessing the EZ-RC™ Remote Control Setup Wizard, go to the Main Menu and click **Activities**. Select **Add an Activity** from the submenu that appears.

Then continue with the steps that follow to set up the Watch Movie activity.



#### Choose the activity you want to set up (Watch Movie)

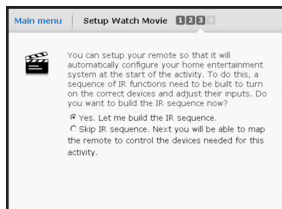
The next screen shows you a list of activities you can set up. Choose **Watch Movie**. Press the **Next** button to continue.



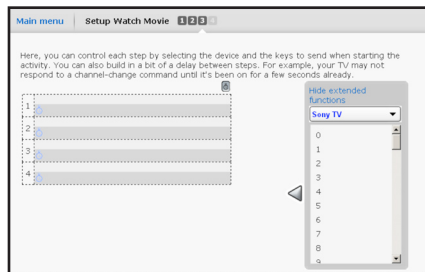
#### Name the activity

The next screen lets you customize the name of this activity. Type in a new name for this activity or leave it as "Watch Movie". Then click **Next**.

## 4 Build the Watch Movie activity for your devices.



Once you've given the Watch Movie activity the name you want (or left it as "Watch Movie"), the next Wizard screen asks if you want to build the sequence of commands to configure your home entertainment system to watch a movie. Select **Yes. Let me build the IR sequence.** and click **Next.**



In the screen that follows, enter the series of keypresses you use to watch a movie on your entertainment system.

Use the chart for YOUR setup on page 25 to add the keypresses.

***For "Watch Movie" you don't need to turn anything on.***

The Hello activity does that for you. All you need to worry about is finding the right input on your devices.

***To enter each command into the sequence:***

1. Use the pull-down menu on the right side of the screen to choose the device you want to send the command to.



### If you see this screen...



Don't worry—the *Xsight™ Touch* will create this soft key for you. Just click **Yes** and continue building your activity.

2. Scroll through the commands available for this device. (The list also includes extended functions that the *Xsight™ Touch* will create if needed.) Find the key(s) that you want to enter for that device.
3. When you see the key command you want to use, highlight it and press the on-screen arrow button to include it in the list of commands for this activity.

### Don't see the key command you want?

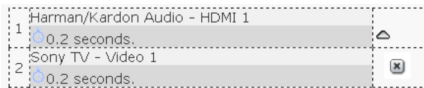
First, make sure you've selected the correct device from the drop-down menu. Then, double check your original remote and make sure you've written down the key name correctly. If you still don't see the key command you're looking for, you can have the *Xsight™ Touch* learn this key from your original remote.

#### To learn a new key:

1. Click **Cancel** in the EZ-RC™ Remote Control Setup Wizard screen. Save the activity as you've built it so far.
  2. Click **Download to Remote** in the Main Menu. Once the download has finished, disconnect the remote from your PC.
  3. Follow the instructions for learning the key from the original remote on the *Xsight™ Touch*. These instructions are in the Owners Manual on the CD-Rom that came with your *Xsight™ Touch*.
  4. Once you've finished learning the specific input key, reconnect the *Xsight™ Touch* to your PC and launch the EZ-RC™ Remote Control Setup Wizard again.
  5. In the EZ-RC™ Remote Control Setup Wizard main menu, click **Activities** and choose **Modify Activity** from the submenu that appears.
  6. Choose the **Watch Movie** activity, then **The Key Command Sequence**. Then follow the rest of the instructions starting on the previous page of this manual.
4. Repeat for each key command you want to add to your activity.

**To move a command in the sequence:** Click the command in the list. Then click one of the arrows that appear (up or down) to move the command.

**To delete a command from the sequence:** Click the **X** icon next to the icon in the sequence. Answer **Yes** to the dialog box that appears to delete the command from the sequence.





**To change the timing between commands** (sometimes useful if a device needs to respond to one command before it can respond to another): click the clock icon in the second line of the command and use the arrows to adjust the number of seconds to wait before giving the next command.

5. Once you've built the activity to your satisfaction, click **Next** to continue.

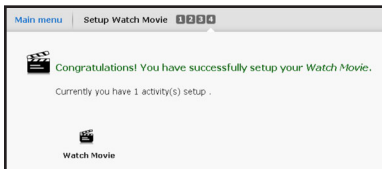
### Set the volume/channel/transport controls

The final setup screen for the Watch Movie activity lets you set which devices you use to change volume and channels, and control playback when you're watching a movie.



To change which device a group of keys controls, click the device listed to display the drop-down menu and select the device you want this group of keys to control.

Once you've set the devices you want to control volume, channel selection, and playback, click **Next**.



The final screen confirms that you've set up a Watch Movie activity.

Click **Yes** to set up another activity.

## Setting up a Watch Satellite or Watch Cable activity

### 1 Write down which devices you use to Watch Satellite or Cable.

Look at the following example setup for “Watch Satellite”, then fill in the information for this activity in your home theater.

Example setup	What device do you use to...		
	Control volume?	Watch video?	Change channels?
Watch Satellite	A/V receiver	TV	Satellite rcvr

YOUR setup	What device do you use to...		
	Control volume?	Watch video?	Change channels?
Watch Satellite			

### 2 Write down how you access those inputs with your original remotes.

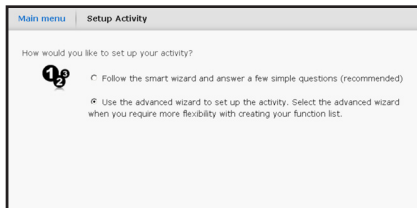
Look at the following example setup for a “Watch Satellite” activity. Then fill in the information for the activity in your home theater.

Example setup	Keypresses to watch/listen to satellite/cable
A/V receiver	HDMI2 key
TV	INPUT, down arrow, ENTER

YOUR setup	Keypresses to watch/listen to satellite/cable

**IMPORTANT:** If you always use the same input on any of your devices, you don’t need to include this device in the Watch Satellite or Watch Cable activity—it should already be on the correct input.

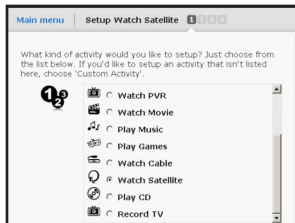
### 3 Add a new activity in the EZ-RC™ Remote Control Setup Wizard.



#### Choose Advanced Wizard

For the Watch Satellite or Watch Cable activity, choose the Advanced Wizard and click the **Next** button to continue.

A screen appears showing you the steps you'll go through to set up the activity using the Advanced Wizard. Click the **Next** button to continue.



#### Choose the activity you want to set up (Watch Satellite or Watch Cable)

The next screen shows you a list of activities you can set up. Choose **Watch Satellite** or **Watch Cable**. Press the **Next** button to continue.



#### Name the activity

The next screen lets you customize the name of this activity. Type in a new name for this activity or leave it as "Watch Satellite" or "Watch Cable". Then click **Next**.

## 4 Build the Watch Satellite or Watch Cable activity for your devices.



Once you've given this activity the name you want (or left it as-is), the next Wizard screen asks if you want to build the sequence of commands to configure your home entertainment system to watch a movie. Select **Yes** and click **Next**.

In the screen that follows, enter the series of keypresses you use to watch a movie on your entertainment system.



Use the chart for YOUR setup on page 30 to add the keypresses.

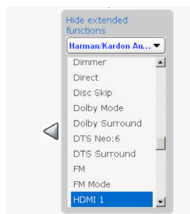
**For this activity, you don't need to turn anything on.**

The Hello activity does that for you. All you need to worry about is finding the right input on your devices.



**To enter each command into the sequence:**

1. Use the pull-down menu on the right side of the screen to choose the device you want to send the command to.



2. Scroll through the commands available for this device. (The list also includes extended functions that the *Xsight™ Touch* will create if needed.) Find the key(s) that you want to enter for that device.
3. When you see a key command you want to use, highlight it and press the on-screen arrow button to include it in the list of commands for this activity.

### **Don't see the key command you want?**

See the "Don't see the key command you want?" box on page 28 for Troubleshooting suggestions.



#### **Create a softkey?**

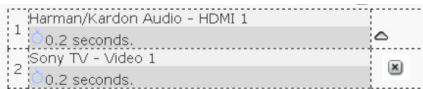
This is an extended function, which requires a new softkey created on a selected device. You will, however, be able to edit device keys and remove the softkey in the future. Are you sure you want to use this function?

Yes

No

### **If you see this screen...**

Don't worry—the *Xsight™ Touch* will create this soft key for you. Just click **Yes** and continue building your activity.



4. Repeat for each key command you want to add to your activity.

**To move a command in the sequence:** Click and hold on the arrow next to the command in the list. Drag the command where you want it in the sequence.

**To delete a command from the sequence:** Click the **X** icon next to the icon in the sequence. Answer **Yes** to the dialog box that appears to delete the command from the sequence.

**To change the timing between commands** (sometimes useful if a device needs to respond to one command before it can respond to another): click the clock icon in the second line of the command and choose from the drop-down menu to select the number of seconds to wait before giving the next command.

5. Once you've built the activity to your satisfaction, click **Next** to continue.

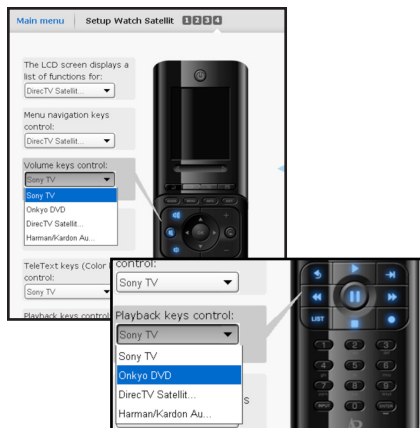
### Set the volume/channel/transport controls

The final setup screen for the Watch Satellite or Watch Cable activity lets you set which devices you use to change volume and channels, and control playback when you're watching satellite or cable.

To change which device a group of keys controls, click the device listed to display the drop-down menu and select the device you want this group of keys to control.

Once you've set the devices you want to control volume, channel selection, and playback, click **Next**.

The final screen confirms that you've set up this activity. Click **Yes** to set up another activity or **No** to go to the Main Menu.



### **IMPORTANT: Don't forget to download your activities to your remote.**

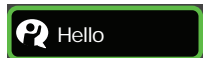
When you've finished customizing your remote using the EZ-RC™ Remote Control Setup Wizard, go to the main menu and click **Download to Remote** to save your settings to the remote itself.

The next screen asks if you'd like to review your settings.

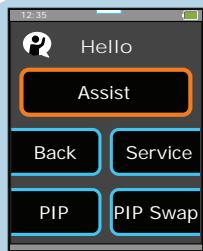
Choose **Yes** if you want to see the complete list of activities, favorites, devices, and other settings you've saved using the EZ-RC™ Remote Control Setup Wizard. Choose **No** to download without reviewing the settings.

When all the information has been downloaded to your remote, a confirmation screen appears. Carefully disconnect the remote from your PC to start using it.

## Using your activities



1. Press the <sup>1</sup><sub>2</sub><sup>3</sup> (Activities) shortcut key.
2. When you start using your home theater—**before you turn anything on**—choose the *Hello* activity.



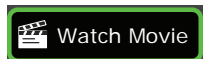
### How do I know when an activity has finished?

When you see soft keys for one of your devices on the remote screen, the remote has finished sending the activity's commands and is ready to do something else.



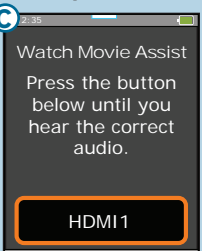
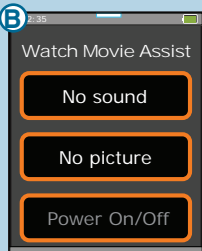
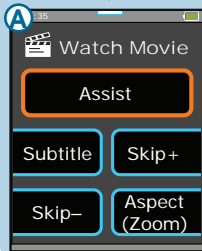
### Need help after the Hello activity has finished?

Press **Assist**. Then press **Power On/Off** to turn devices on manually. Use the slider to access more devices.



3. Choose the home entertainment activity you want to perform (for example, *Watch Movie*).




### Need help after a Watch.. or Listen... activity has finished?



**A** Press **Assist**.

**B** Press **No Sound** or **No Picture**.


**C** Press the on-screen input key until you see or hear the correct signal.

Press the  key when you see or hear the source you want. Then press the  key again to go to the soft keys. To go to the home menu, press and hold the  key.

### What if Assist doesn't work?

If the **Assist** screens are not helping you find the correct inputs on your devices, check the following:


- **Is the wrong device changing inputs?**

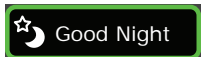
Make sure the input key you see on the No Sound/No Picture screen is the correct one for the device you're trying to change. If it isn't, press the  key and try the other Assist option (for example, **No Sound** if you chose **No Picture** first). If that option is still changing inputs on the wrong device, connect the remote to your PC and launch the EZ-RC™ Remote Control Setup Wizard. In the main menu, choose **Activities**, **Modify an Activity**, the activity you want to modify, and **Key Command Sequence**. In the Key Command Sequence, check that you've chosen the correct input commands for each device.


- **Is the device going to the wrong input or not changing inputs at all?**

Make sure the input key you see on the No Sound/No Picture screen matches the device input you're trying to access. If it doesn't, you'll need to change to the correct command in the EZ-RC™ Remote Control Setup Wizard. Connect the remote to your PC and launch the EZ-RC™ Remote Control Setup Wizard. In the main menu, choose **Activities**, **Modify an Activity**, the activity you want to modify, and **Key Command Sequence**. In the Key Command Sequence, check that you've chosen the correct input commands for each device.

To do another activity, press the  shortcut key.

To go to the home menu, press and hold the  key.



4. When you're finished with your home theater, press the  shortcut key and choose the **Good Night** activity.

### Need help setting up this remote?

Please call our help line toll-free at 1-800-276-0509.



# Favorites and Profiles

## Quick Look:

- > How to make the *Xsight™ Touch* remote Yours
- > Create a Family Favorite Channels list
- > Create individual Profiles for each family member

## What you'll be doing by the end of this section:

Using the *Xsight™ Touch* your way, all at the touch of a button.

## How to make this remote all yours

The *Xsight™ Touch* has powerful customization tools to make this remote truly your own. Favorites gives you access to your Favorite Channels and settings for the whole family. You can choose up to 72 favorite channels. Profiles lets you group your favorite channels and remote settings for each family member or type of programming.

To use Favorites and Profiles, first build your list of favorite channels for the entire family—this list includes everything: all of Mom's favorites, all of Dad's...anything you plan to include in your profiles. Then you can choose from this list to create the individual profiles. But remember: a channel must be in your favorites in order to be in a profile.

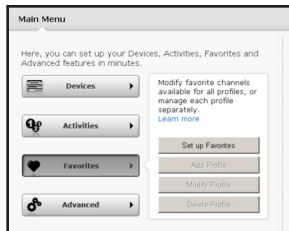
## Creating your family favorites

The first step is creating a list of favorite channels for the entire family. Once you've created this list, you can create lists for separate profiles.

### If you're not already signed in:

1. Double-click the EZ-RC™ Remote Control Setup Wizard icon on your PC desktop and sign in.
2. Connect your remote and click **Continue**.
3. Select **Edit an existing setup you've saved here before** and click **Start**. (If you've made changes on your remote, press **Upload and edit...**) Continue with the rest of the directions in this section.

## 1 Set up your favorites.



In the main menu, click **Favorites** and select **Set up Favorites** from the Favorites submenu.

The next screen shows you the steps you'll complete to set up your favorites. Press **Next** to continue.

### ***Set the device you use to change channels***

If you subscribe to a satellite programming service, for example, you probably use your satellite box to change channels, not your TV. Choose the option that works for your home theater, then click **Next**.

**Note:** The Favorites feature works with a single source, like your cable box or satellite receiver. It will not work with a second source (for example, a satellite receiver *and* over-the-air programming on your TV).

### ***Set how many digits your channels have***

For example, if your channels go up to 999, then you should select 3 digits. If the channels go to up to 99, you should select 2 digits. Choose the option that works for your home theater, then click **Next**.

**Note:** If you plan to include digital sub-channels in your Favorites list (like 59.1), choose **4 digits**. Then choose **Enter** or **Select/OK** in the screen that follows if your system supports either of these options.

### ***Set how you finish entering a channel number***

Next you tell the setup wizard if you usually press Enter or OK on your remote to enter a channel. Choose the option that works for your home theater, then click **Next**.

Now the EZ-RC™ Remote Control Setup Wizard starts loading the channel icons. This might take a few minutes, depending on the speed of your internet connection.



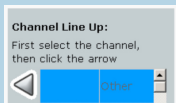
## 2 Choose your favorite channels.



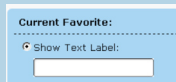
### Select a channel

Click the scroll bar to find a channel you want to add to your favorites. The channels are listed in alphabetical order. Highlight a channel you want to add, and click the arrow that appears to the left of the channel to add it to your favorites.

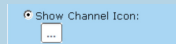
### If you don't see your channel listed...



You can add it manually by choosing **Other** at the top of the list. You can then choose to display this channel by a text label or search the EZ-RC™ Remote Control Setup Wizard library for a channel icon.



To use a text label, simply type in the text you want to use and proceed to the rest of the directions that follow to enter the channel number.



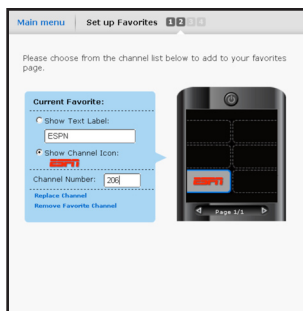
To use an icon from the library (or to choose your own), select **Show Channel Icon**, then click the ... button.



Scroll through the icons available in the collection and highlight the logo you want. If you don't see the icon you want, you can add your own by clicking the **Browse** button and finding the artwork for the icon on your PC.

Press **OK** when you've selected the icon you want.

The channel icon appears in the replica of the remote screen. Continue with the instructions that follow to add the channel number for this channel.



### Type in the channel number

When the channel icon or label appears on the replica remote screen, type in the number for the channel in your programming.

### Add the next channel

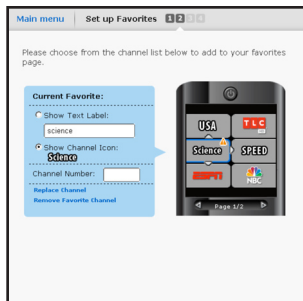
Click the next space in the replica remote screen to add another channel to your favorites. Then follow the same procedure you followed for adding the first channel.



### When you fill up a page...

Click the + icon below the replica remote screen to add another page. Then click the first space in that page to start filling it with channels.

Use the left and right arrow buttons below the replica remote screen to move through multiple pages of your favorites.



### Check your channels

When you've added all your favorite channels, check the pages you've compiled to make sure you've added channel numbers for all the channels—otherwise the remote won't be able to tune directly to this channel. A ⚠️ icon appears next to those channels missing channel numbers.

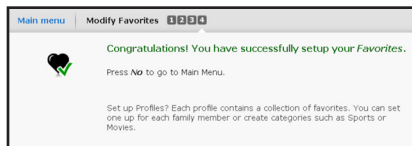
To move a channel in the list, click on the channel's logo, then click one of the arrows that appear to change the channel's position on the screen.

### Finish the list

When you've made sure all the channel numbers are entered, click the **Next** button to proceed to the final step of creating your Favorites list. The setup wizard takes a few moments to prepare the next screen.



## 3 Choose the devices controlled by each section of the remote.



In the final step in creating your Favorite channels list, you set what different groups of keys control by default when you're using your favorite channel list.

Set this screen for the way you usually use a remote while watching your favorite channels. These settings will serve as a starting-point for individual profile settings.

Once you've set up the keys on this screen, you won't need to switch device modes to control the volume, channels, etc.—no matter which device you're controlling with the other keys, the remote will automatically change volume on the device you select here.

You can set the following options:

LCD screen (soft keys)

Volume keys

TeleText (color) keys

Number keys

Menu navigation keys

Channel keys

Playback keys

Input keys

To change an option from the one shown, highlight the option you'd like to change, then choose the device you want these keys to control from the drop-down list.

When you've finished setting the device you'd like the keys in each section of the remote to control, click the **Next** button to proceed.

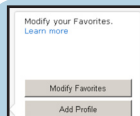
That's it! You've set up your list of Favorite channels.

If you want to set up separate profiles for members of your family, with their favorite channels and settings, click **Yes**. If you just want to use the Favorites list for everyone, click **No**.

## Creating Individual Profiles

Once you've created the Favorites list, you can create individual profile lists for each member of the family.

If you select **Yes** from the final screen of the Favorites setup wizard, you're ready to start creating your first profile.

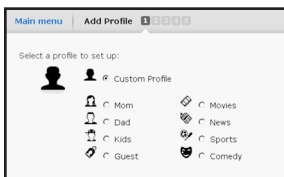


### **If you selected No:**

Choose **Favorites** from the Main menu and select **Add Profile** from the submenu.

### 1 Add your Profile.

The first Create Profiles screen shows you the steps you'll complete to set up your profile. Press **Next** to continue.



### **Choose Profile type**

Choose the illustration you want for your profile—the name doesn't matter: you can set it in the next step.



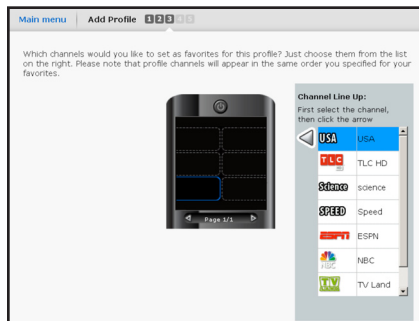
### **Change name / Add a picture**

Type in a name for the profile you're creating.

You can customize the icon that appears next to your profile name with a picture from your PC. Click the icon to add your picture. Then browse your PC for the picture you want to use. For best results on the remote screen, use a 4x3 close-up picture (jpg format).

Click **Next** to give the profile this name and customized picture.

## 2 Choose the channels for this profile.



Click the scroll bar to find a channel you want to add to this profile. Highlight a channel you want to add, and click the arrow that appears to the left of the channel to add it to this profile.

**IMPORTANT:** Only the channels you've chosen as your favorites can be selected for a profile. If you want to add a channel for your profile that you don't see here, add it to your favorites by choosing **Favorites**, and then **Modify Favorites** in the EZ-RC™ Remote Control Setup Wizard Main Menu and following the on-screen instructions for adding channels.



Click the next space in the replica remote screen to add another channel to this profile.

Then follow the same procedure you followed for adding the first channel.

When you've filled up a page, click the **+** icon below the replica remote screen to add another page. Then click the first space in that page to start filling it with channels.

When you've added all the channels you want for this profile, click the **Next** button. The setup wizard takes a few moments to prepare the next screen.

### 3 Choose the devices controlled by each section of the remote.



In the final step in creating this profile, you set what different groups of keys control by default when you're using this profile.

This is useful, for example, if the person using this profile prefers to use the surround sound system when watching TV—or if the person using this profile should *not* use the surround sound system! Once you've set up the keys on this screen, you won't need to switch device modes to control the volume, channels, etc.—no matter which device you're controlling with the other keys, the remote will automatically change volume on the device you select here.

You can set the following options:

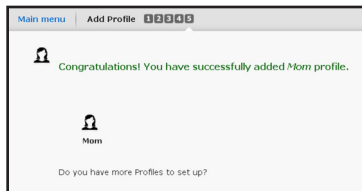
LCD screen (soft keys)	Menu navigation keys
Volume keys	Channel keys
TeleText (color) keys	Playback keys
Number keys	Input keys

To change an option from the one shown, highlight the option you'd like to change, then choose the device you want these keys to control from the drop-down list.

When you've finished setting what device you'd like the keys of each part of the remote to control, click the **Next** button to proceed.

That's it! You've finished setting up this profile.

If you want to set up another profile (for someone else in the family, for example), click **Yes**. If you just want to just stick with this profile for now, click **No**.






# Troubleshooting

Most common problems with your *Xsight™ Touch* can be resolved by trying one of the following solutions. If you have any further questions, please call our help line toll-free at 1-800-276-0509.

## Initial setup

- **My remote doesn't come on automatically when I pick it up.**  
Press the OK key to wake the remote up. Once you've completed the initial setup, you can change the Tilt setting by accessing **Settings** from the home screen and **Tilt** from the Settings menu. If this setting is off, turn it on.
- **The screens are in the wrong language.**  
Change the setting by pressing the  (Home/Back) key to go back one or more screens in the setup routine.

## On-remote device setup

- **How do I access on-remote device setup?**  
If you quit setup after setting the time, you can access device setup through the Setup menu on the remote. In the Home screen, choose **Setup** (it's on the second page of the Home screen—use the slider bar to access it). Then press **Device Setup** and **Add Device**. Then follow the rest of the instructions in the Out of the box section.
- **I don't see my device in the "What is it" screen.**  
Try the EZ-RC™ Remote Control Setup Wizard. On-remote device setup supports the most popular models of the most popular brands. The EZ-RC™ Remote Control Setup Wizard handles everything else. See the sections on the EZ-RC™ Remote Control Setup Wizard for information.
- **I don't see my brand in the "Brand" screen.**  
Try the EZ-RC™ Remote Control Setup Wizard. On-remote device setup supports the most popular models of the most popular brands. The EZ-RC™ Remote Control Setup Wizard handles everything else. See the sections on the EZ-RC™ Remote Control Setup Wizard for information.

- **I can't find a code that works my device (or one that does everything I want it to do).**


Make sure you're pointing the remote directly at the device you're trying to control.

It may take a few seconds for your device to respond to a command (especially on or off). Be patient between presses—give your device a few seconds to respond.

Some brands of devices do not use a POWER key to turn the device on or off. Instead they use separate POWER ON and POWER OFF keys. Check your devices' original remotes to see if any of them have these separate power keys. If they do, use other keys (volume, channel, or number keys) to test codes in this step.

If the above solutions don't work completely, use the EZ-RC™ Remote Control Setup Wizard. The setup wizard lets you enter your device's model number to find exactly the right code for your device. If you find a code that does most of what you want to do with a device, you can learn additional keys from your original remote through the remote's Settings menu (see the remote's user manual for instructions).

- **How can I go back if I make a mistake?**

Press the  (Home/Back) key to go back one or more screens in the setup routine.

## The EZ-RC™ Remote Control Setup Wizard

- **The EZ-RC™ program won't install on my PC.**

Your PC must be running Windows XP or Windows Vista (Windows 2000 is not supported). You must use Internet Explorer 6.0 or later (Firefox or Safari not supported).

Windows XP users must have Service Pack 3 and .Net 3.5

To find out what service pack version you have:

1. Right click on My Computer on your PC desktop.
2. Choose Properties from the drop-down menu.
3. In the General Tab, the Service Pack is listed under System.

To update to SP3:

1. Insert the CD that came with the remote. The CD goes automatically to Microsoft update site if you have a working internet connection.
2. At the Microsoft website, click Express to begin the updating process. The Microsoft site checks your computer (this takes about 5-10 minutes).
3. The Microsoft site will tell you which updates you need to install. Follow the Microsoft site and installation wizard instructions to download and install updates.  
If you have SP1, this will take 1 hour to update to SP2; an additional 30 mins for SP3 (depending on connection speed)  
If you have SP2, this will take 30 mins for SP3 (depending on connection speed)
4. Close all internet browser windows and continue with EZ-RC install.

- **What if my CD doesn't start installation automatically?**

Open the CD and double-click on the Wiz2 icon.

If you have Windows XP and need Service Pack 3, see the Important Note for Windows XP users on the previous page (Vista users do not need this kind of update).

- **The EZ-RC™ program seems slow.**

Proxy servers, like those used in many business networks, may affect the performance of the EZ-RC™ Remote Control Setup Wizard. For best results, use the EZ-RC™ Remote Control Setup Wizard with a direct internet connection (for example, your home connection).

- **How do I know the remote's connected?**

Look for the green arrow icon in your PC's status bar.

- **I see a progress bar in the corner of the screen when I connect the remote.**

Your remote's firmware is being updated. Don't disconnect the remote! The Xsight™ Touch is constantly being updated and improved, to get the latest codes and provide the most advanced functionality available.

- **I get an error message after I connect my remote.**

You might need to change your Active X settings in Internet Explorer for the EZ-RC™ Remote Control Setup Wizard to work.

To change Active X settings:

1. Click OK in the "Missing necessary software..." dialog box.
2. Locate the yellow warning bar just above the AR remote control setup wizard page.
3. Click where it says "click here" on the yellow warning bar to change the Active X setting.
4. Click the Connect button again at the bottom of the screen.

## Setting Up Activities

- **I want to add a key command to my Watch Movie/Satellite/Cable activity, but I don't see it in the list of commands.**

Make sure you've selected the correct device from the drop-down menu. Double check your original remote and make sure you've written down the key name correctly.

If you haven't entered model number information for this device in the EZ-RC™ Remote Control Setup Wizard, go to the Main menu, select **Devices** and **Modify Device**. Then enter the model number for this device to get all the functionality available.

If you still don't see the key command you're looking for, you can have the Xsight™ Touch learn this key from your original remote. See page 28 for more information.

- **I've set up Activities on my PC, but I can't access them on my remote.**

You must download any changes you've made to your settings in the EZ-RC™ Remote Control Setup Wizard to the remote. Go to the main menu and click **Download to Remote** to save your settings to the remote itself. Otherwise, the work you've done will not be saved to your remote. See page 34 for more information.

## Using Activities

- **How do I know when an activity has finished?**

When you see the **Assist** key and soft keys for one of your devices on the remote screen, the remote has finished sending the activity's commands and is ready to do something else.

- **My Hello activity didn't work.**

On the remote screen, press **Assist**. Then press **Power On/Off**. Press the key for each device to turn that device on. Use the slider to access more devices.

Make sure your remote is pointed directly at your home entertainment devices and that there's nothing obstructing the path.


If the Power On/Off command in the Assist screen still doesn't turn your device on, you might be using the wrong command to power on this device. Reconnect to the EZ-RC™ Remote Control Setup Wizard and choose **Activities, Modify Activity**. Then choose the **Hello** activity and check the power on/off commands. See page 16 for more information.

Make sure all your devices are off before you start the Hello activity.

- **My Watch Movie/Satellite/Cable activity didn't work.**

On the remote screen, press **Assist**. Then press **No Sound** or **No Picture**. Finally, press the on-screen input button until you see or hear the correct signal.

- **The wrong device is changing inputs in the Assist screens.**

Make sure the input key you see on the No Sound/No Picture screen is the correct one for the device you're trying to change. If it isn't, press the  key and try the other Assist option (for example, **No Sound** if you chose **No Picture** first)

If that option is still changing inputs on the wrong device, connect the remote to your PC and launch the EZ-RC™ Remote Control Setup Wizard. In the main menu, choose **Activities, Modify an Activity**, the activity you want to modify, and **Key Command Sequence**. In the Key Command Sequence, check that you've chosen the correct input commands for each device.

- **The device is going to the wrong input or not changing inputs at all in the Assist screens.**

Make sure the input key you see on the No Sound/No Picture screen matches the device input you're trying to access. If it doesn't, you'll need to change to the correct command in the EZ-RC™ Remote Control Setup Wizard.

Connect the remote to your PC and launch the EZ-RC™ Remote Control Setup Wizard. In the main menu, choose **Activities, Modify an Activity**, the activity you want to modify, and **Key Command Sequence**. In the Key Command Sequence, check that you've chosen the correct input commands for each device.

## Using Favorites and Profiles

- **I can't find a channel I want to add to my Favorites.**

You can add it manually by choosing **Other** at the top of the list. You can then choose to display this channel by a text label or search the EZ-RC™ Remote Control Setup Wizard library for a channel icon. To use an icon from the library (or to choose your own), select **Show Channel Icon**, then click the ... button.

Scroll through the icons available in the collection and highlight the logo you want. If you don't see the icon you want, you can add your own by clicking the **Browse** button and finding the artwork for the icon on your PC. Press **OK** when you've selected the icon you want.

The channel icon appears in the replica of the remote screen. Continue with the instructions that follow to add the channel number for this channel.

- **I can't find a channel I want to add to my Profile.**

Only the channels you've chosen as your favorites can be selected for a profile. If you want to add a channel for your profile that you don't see here, add it to your favorites by choosing **Favorites**, and then **Modify Favorites** in the EZ-RC™ Remote Control Setup Wizard Main Menu and following the on-screen instructions for adding channels.

- **How do I customize my Profile's picture?**

In the second Add Profile screen (where you can change the name of the Profile), click the Profile's icon and browse your PC for the picture you want to use.

- **How do I start a second page of favorite channels?**

When you've filled up a page, click the + icon below the replica remote screen to add another page. Then click the first space in that page to start filling it with channels.

- **I can't tune to one or more of my favorite channels.**

Make sure all your favorite channels are on a single source, like your cable box or satellite receiver. Favorites won't work with a second source (for example, a satellite receiver and over-the-air programming on your TV). If you have digital sub-channels in your Favorites list (like 59.1), choose **4 digits** in the Favorites setup. See page 38 for more information.

Make sure the settings for Favorites match the way you tune to channels in your system. See page 38 for more information.

Make sure the channel numbers you entered for your favorite channels are accurate for your system.

**Need help setting up this remote?**  
**Please call our help line toll-free at 1-800-276-0509.**

Use of the software provided with this product may require the most recent Windows® updates in order to function properly. Any such updates are third party software which shall be governed by such third party's license agreement. Audiovox is not responsible for any third party's software and shall have no liability for your use of third party software.

©2009 Audiovox Accessories Corporation

Xsight™ and EZ-RC™ are trademarks or registered trademarks of Universal Electronics Inc. Windows® is a registered trademark Of Microsoft Corporation. All trademarks are the properties of their respective owners. All trademarks are the properties of their respective owners.

ARRX18G NA Setup 03