



**Wireless Stereo Headphones for
Mobile Professionals**



WSH2210
for Mac® + Windows®

User's Guide

Contents

Before You Begin	4
Introduction	5
Package Contents	7
Knowing Your iWiSH Headphones and USB Sound Stick	8
Getting Started	11
Charging your iWiSH Headphones	11
Listening to Music	13
Turning OFF your iWiSH Headphones	13
Controlling Your Music Player	15
Advanced Features	16
Reconnecting to USB Sound Stick	16
Using iWiSH Headphones with other Bluetooth stereo devices	17
LED and Audio Feedback	19
Troubleshooting	21
Technical Specification	23
Care and Maintenance	25
Regulatory Information	27
APPENDIX A - Setting USB Sound Stick as Default Sound Playback Device	30
Product Warranty	35

Before You Begin

Congratulations and thank you for purchasing iWiSH2210. Please take time to read this user's guide so that you can enjoy all the features of your new wireless headphones.

Trademark Information

© Copyright 2005 Hippo Lifestyles Pte Ltd. All rights reserved. Hippo and iWiSH are trademarks of Hippo Lifestyles Pte Ltd and its affiliates. Bluetooth is a trademark owned by Bluetooth SIG and licensed to Hippo Lifestyles Pte Ltd. Microsoft and Windows are US registered trademarks of Microsoft Corporation. Mac and Macintosh are trademarks of Apple Computer Inc. Other names and products may be trademarks or registered trademarks of their respective owners.

Notice

Product Design and Specifications including, but not limited to primary product specifications, firmware, accessories and user's guide may change without notice. This user's guide is a general reference guide for iWiSH2210.

The product and accessories that come with your purchase may be different from those described in this guide. This is due to the fact that retailers may specify slightly different product inclusions and accessories to suit their market requirements, customer demographics and geographical preferences.

The manufacturer assumes no liability for any errors or discrepancies in the user's guide. For revisions to this guide and other manuals, please visit our website www.hippolifestyles.com

Introduction

Overview

Your new iWiSH Headphones and USB Sound Stick enable listening to music wirelessly from your PC or Mac without any software installation. Now you can listen to stereo-quality audio wirelessly up to 25 feet (8 meters) away and control the music player on your PC using the headphones.

The Technology

iWiSH Headphones connect to the USB Sound Stick over Bluetooth. Bluetooth is a radio technology designed to deliver reliable, short-range wireless mobility solutions. Bluetooth seeks to eliminate the wires that interconnect proximate personal devices such as mobile phones, laptops, PDAs and headphones. The iWiSH headphones and USB sound stick are compliant with the Bluetooth specification 1.2 supporting Advanced Audio Distribution Profile (A2DP) and Audio Video Remote Control Profile (AVRCP).

System Requirements

Platform	PC	Mac
Machine requirements	Pentium® 4 processor with 1 GHz or higher clock 128 MB RAM or more	G4/G5 processor with 1.2 GHz or higher clock 128 MB RAM or more
Operating System Version	Windows® 2000 SP4 or later Windows® XP Home SP2 or later Windows® XP Professional SP2 or later	Mac® OS X v10.1.5 or later
Music Player Software	Windows Media® Player 9.x, 10.x MusicMatch® 9.00 or later iTunes® 4.7 or later Winamp™ 5.09 or later RealPlayer™ 10.5 or later	iTunes® 4.7 or later
USB	USB 1.1/2.0	USB 1.1/2.0

Note:

- a. The USB sound stick is NOT tested for compatibility with other operating systems including Windows 98SE and Windows ME.*
- b. Remote Control function is not supported on Mac OS.*
- c. Remote Control function is not supported on Winamp music player.*

Package Contents

iWiSH2210 includes the following components

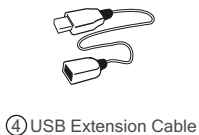
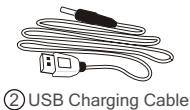
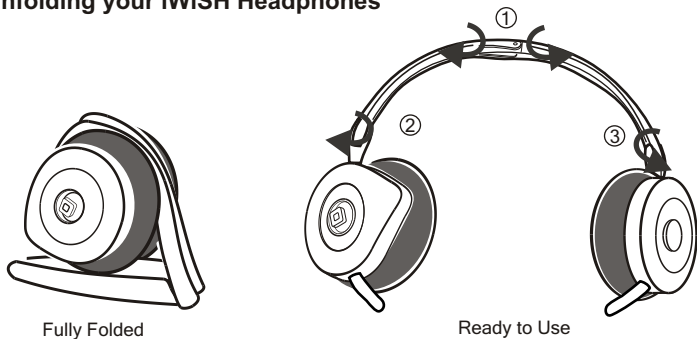


Fig 1

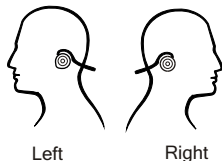
Knowing Your iWiSH Headphones and USB Sound Stick

Unfolding your iWiSH Headphones



Fully Folded

Ready to Use



Left

Right

In Use

Fig 2

Getting acquainted with your iWiSH Headphones

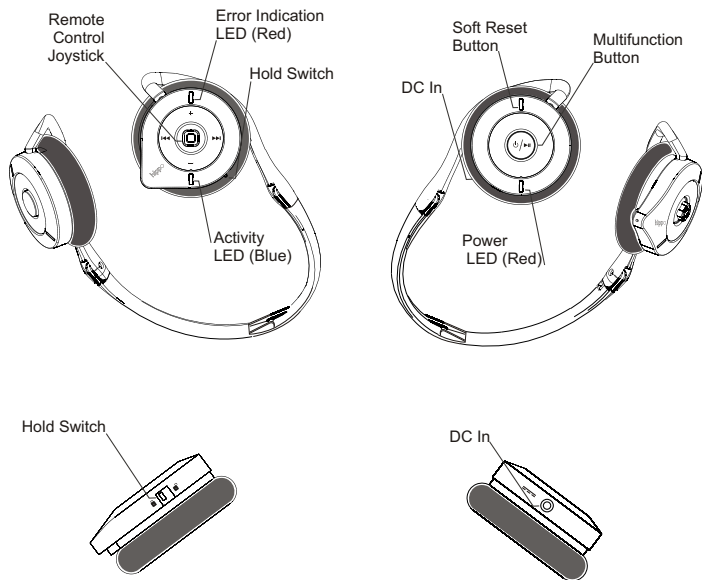


Fig 3

Getting acquainted with your USB Sound Stick

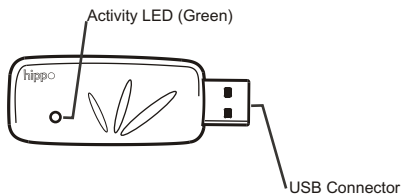


Fig 4

Getting Started

Charging your iWiSH Headphones

1. Make sure that the headphones are turned OFF.

2(a). If you want to charge the headphones from notebook or computer, connect one end of the USB Charging Cable to the socket labeled 'DC In'(refer to Fig 3) on the headphones. Connect the other end of the USB Charging Cable either to your notebook or computer USB slot (make sure that your notebook or computer is turned ON).

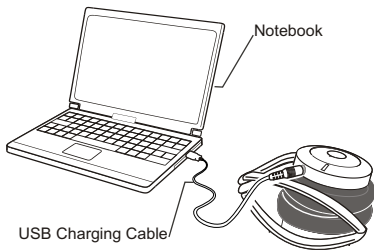


Fig 5 (a)

2(b). If you want to charge the headphones from an electrical outlet, connect the end of the cable of the Universal Power Adapter to the socket labeled 'DC In' (refer to Fig 3) on the headphones. Connect the Universal Power Adapter to an electrical outlet.

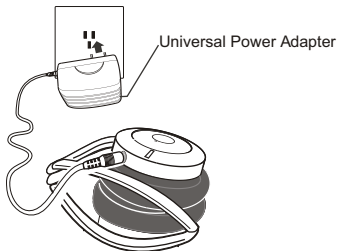


Fig 5(b)

The headphones use lithium polymer battery. The headphones are capable of a continuous playtime of 5 hours. It takes about 2 hours 20 minutes to fully charge the battery.

Note: It is recommended that you completely charge the headphones before first use.

Listening to Music

Step 1: Turn ON your iWiSH Headphones

1. Ensure that the headphones are fully charged.
2. Press the Multifunction Button for 2 seconds to turn ON the headphones. You will see the Power LED (Red) glow for a brief while and you will hear a startup tune on the headphones. Release the button once the Power LED turns OFF. The headphones are now ready to accept Bluetooth connection from the USB sound stick. The Activity LED (Blue) glows continuously to indicate readiness.

Note : To preserve battery charge, the headphones automatically turn off after 3 minutes if there is no Bluetooth connection from the sound stick.

Step 2: Set up USB Sound Stick on PC or Mac

1. Identify a free USB slot on your PC/Mac and plug in the USB sound stick.
2. Wait a few seconds for your PC or Mac to recognize the USB sound stick. The PC/Mac will automatically set the USB sound stick as the default sound playback device.

Note: On some systems, the default sound playback device may not change to the USB sound stick automatically. Please refer to Appendix A: Setting USB Sound Stick as Default Sound playback device, for instructions on how to set the USB sound stick as the default sound playback device.

The sound stick's Activity LED (Green) blinks rapidly as it connects to the headphones. It might take up to 30 seconds for the sound stick to connect to the headphones. Once connected, the activity LEDs on both the sound stick and the headphones start blinking slowly.

Step 3: Streaming music

Launch the desktop music player software on your PC/Mac and play your favourite music. You should now be able to hear the music on your headphones.

Note 1: If you were already playing music player, stop the music (press stop button on the music player) and play again. This is needed for the music player to recognize the sound stick. Alternately, you can exit the music player, re-launch and play the music again.

Note 2: For best results ensure that you are within 25 feet (8 meters) from your PC or Mac. If you hear breaks in audio, use the USB Extension Cable provided with your headphones to place the sound stick in visible range from the headphones. Plug one end of USB Extension cable to the USB slot on your PC/Mac and plug the sound stick to the other end of the extension cable.

Turning OFF your iWiSH Headphones

You can turn OFF the headphones by pressing the Multifunction button continuously for 3 seconds. On pressing the Multifunction button, you will hear a shutdown tune on the headphones. Release the button once the Power LED (Red) starts glowing.

To remove the sound stick from PC or Mac, first stop the music player and then plug out the sound stick from the USB slot.

Note: Should your headphones stop working for any reason, and you are unable to turn OFF your headphones using the Multifunction button, please press the Soft Reset button (refer to Fig 3) using a sharp object like a pencil. This would turn OFF the headphones. To use again, turn ON the headphones using the Multifunction button.

Controlling Your Music Player

You can control the music player with the headphones, either using the controls on your desktop music player or remotely using the headphones.

Here is a quick reference to the controls on the headphones

iWiSH Controls

Play/Pause music	Press the Multifunction button once to toggle
------------------	---

Adjust volume	Press the Remote Control Joystick toward 'Volume Up' or 'Volume Down'
---------------	---

Skip to start of song	Press the joystick toward 'Previous Track'
-----------------------	--

Skip to next song	Press the joystick toward 'Next Track'
-------------------	--

Disable buttons to avoid accidental button press	Slide the Hold Switch toward the lock icon
--	--

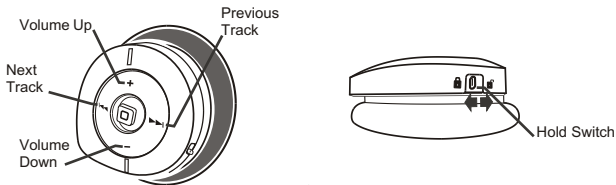


Fig 6

Note: While adjusting volume if you try to increase the volume when it is already at maximum level or if you try to decrease the volume when it is already at minimum level, a beep is played on the headphones.

Advanced Features

Reconnecting to USB Sound Stick

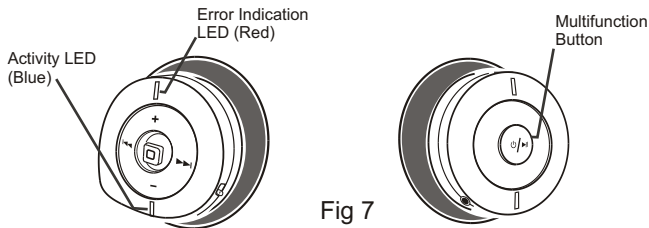
To reconnect to the USB Sound Stick while it is in idle mode, press the Multifunction button after turning ON the iWiSH headphones.

The sound stick automatically goes into a low power state (idle mode) to conserve your notebook battery life when,

- you turn OFF the headphones, while still connected to sound stick on PC or Mac, or
- when you move too far away from your PC or Mac, or
- when you plug in the sound stick to your Mac or PC, but do not turn ON your headphones for more than 3 minutes.

In any of the above scenarios, the sound stick Activity LED (Green) will be continuously ON to indicate idle mode.

Now, to reconnect to the sound stick from your headphones,



1. Turn ON the headphones, if they are not already ON, by pressing the Multifunction button for 2 seconds.
2. Press the Multifunction button once (again). You will see the Activity LED (Blue) on the headphones blinking rapidly. On successful connection, a connection tune is played on the headphones and the Activity LED (Blue) starts blinking slowly as during normal operation.

Using iWiSH Headphones with other Bluetooth stereo devices

The iWiSH headphones and the USB sound stick are pre-configured to automatically connect to each other. However, you can listen to music on the headphones from any other Bluetooth-enabled stereo device that supports the Advanced Audio Distribution Profile (A2DP) like the HP iPAQ Pocket PC.

To use the iWiSH headphones with other Bluetooth stereo devices:

1. Unplug the USB sound stick from PC/Mac, if plugged in.
2. Turn OFF the headphones. Press the Multifunction button on the headphones and hold it down until you see Activity LED (Blue) blinking 3 times periodically. You will also hear a 'Pairing Tune' on the headphones after startup tune is played out. This indicates that the headphones are in 'Pairing mode'. In pairing mode, the headphones are discoverable from other Bluetooth devices and can be connected to.

Note: The headphones stay in Pairing Mode for one minute and Activity Indication (Blue) LED blinks 3 times periodically during this period.

3. Now initiate discovery/pairing process from your Bluetooth stereo device. Please note that your Bluetooth stereo device must support A2DP profile with streaming capability. See the documentation that is provided with your Bluetooth stereo device for details on



4. In case a Pass Key (PIN Key) request is displayed on your Bluetooth stereo device, provide '0000' as the PIN key. The PIN key on the headphones are pre-configured as '0000'.
5. Once pairing is successful, you can establish connection following the procedure provided for your Bluetooth stereo device.
6. Play music on your Bluetooth stereo device. You should now be able to hear music on the headphones.

Note 1: The iWiSH headphones are compliant with the Bluetooth specification 1.2 supporting Advanced Audio Distribution Profile(A2DP) and Audio Video Remote Control Profile (AVRCP). However, interoperability between the iWiSH headphones and other Bluetooth-enabled products is not guaranteed because it depends on compatibility. Check with the manufacturers of other devices to determine their compatibility with this device.

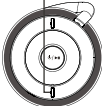
Note 2: Remote control features like 'Next Track', 'Previous Track' and 'Play/Pause' require support in Bluetooth stereo device. The Bluetooth stereo device must support Audio Video Remote Control Profile (AVRCP) for remote controls to work. In case the Bluetooth stereo music device does not support AVRCP capability, pressing the Multifunction button would mute the music on the headphones instead of pausing the music on your Bluetooth stereo device. To unmute, press Multifunction button again on the headphones. Volume +/- remote control will work on the headphones even if remote control is not supported on the Bluetooth stereo device.

LED and Audio Feedback


iWiSH Headphones LED

LED	Glow pattern	Description /activity	Audio
Activity (Blue) 	Continuously ON	Waiting for connection	None
	Slow blink	Connected/ Streaming	Connection tune
	Rapid blink	Reconnecting to Sound stick	None
	Periodic 3 blinks	Pairing mode	Pairing tune
Error Indication (Red) 	One blink every 10 seconds	Battery is low	Beep every 10 seconds

LED	Glow pattern	Description /activity	Audio
Power (Red)	Continuously ON	Charging	None



USB Sound Stick LED

LED	Glow Pattern	Description/ activity
Activity (Green)	Continuous rapid blinks	Connection with headphones is in progress
	Slow Blink (one blink every 2 seconds)	Connected to headphones
	Continuously ON	Waiting for connection from headphones (idle state)

Troubleshooting

1. Unable to hear audio

Please check system requirements in this user's guide to check if your Operating System is compatible with this device.

Make sure that your headphones and the computer are ON, and the USB sound stick is plugged into the computer USB port.

Check if the activity LEDs on both the devices are blinking slowly. This indicates that the headphones and sound stick are connected.

Ensure that the desktop music player is playing music.

Check whether your PC/Mac's Default Sound Playback Device is set to USB sound stick. If not, please refer to Appendix A for the procedure to set USB Sound Stick as Default Sound Playback Device on PC and Mac platforms.

If you were already playing music player on your PC or Mac before plugging in the sound stick, stop the music (press stop button on the music player) and play again. This is needed for the music player to recognize the sound stick. Alternately, you can exit the music player, re-launch and play the music again.

Check whether the headphones and sound stick are within 25 ft of each other.

Increase the volume using the remote control joystick, and check if you hear music.

Check if your PC/Mac music player volume is too low.

If none of the above works, turn OFF and turn ON the headphones, and then plug out and plug in the USB sound stick.

2. Unable to turn ON your headphones

Make sure the Hold Switch is toward 'unlock' icon.

Make sure the headphones are charged.

3. Unable to turn OFF your headphones

Make sure the Hold Switch is toward 'unlock' icon.

Press the Soft Reset button using a sharp object like pencil.

4. Remote control (Prev, Next, Play/Pause) is not working

Remote Control functions, except volume control, are not supported on Mac.

Make sure the Hold Switch is towards 'unlock' icon.

Check whether the desktop music player is in foreground on your PC. Most of the desktop music players need to be in foreground for remote control features to work.

Check the system requirements in this user guide to see if remote control is supported for your music player. Remote Control is not supported on some players like Winamp.

Check whether your PC or Mac has the latest keyboard drivers loaded. If not, please download and install latest drivers from your operating system vendor's web site or contact your system administrator.

Technical Specification

iWiSH Headphones

Model

iWiSH2210

Audio Output

Audio Quality: 48KHz, 16-bit audio
Frequency Response: 20Hz-20KHz
THD: 0.013% at 20 dBFS
Signal-to-Noise Ratio: 83 dB

Wireless Range

Up to 25 feet (8 meters) in open space.
Actual range depends on environment factors, orientation of device, other obstructions and enclosures, radio frequency noise and interference factors.

Bluetooth

Bluetooth V1.2 compliant
Audio Video Remote Control Profile (AVRCP)
Advanced Audio Distribution Profile (A2DP)

Battery

Type: Built-in, Rechargeable
LiPolymer
Charge time: 2 hours, 20 minutes
Battery life: 5 hours continuous play

Audio Codec

SBC (Sub-Band Codec)

General Radio

Carrier frequency: 2.4-2.483 GHz
Class 2 Radio

Power Input

Universal AC/DC Power
Adapter (5V/1A)

Power Consumption

220mW

USB Sound Stick

Model

iWiSH2210

Audio Input

Digital audio (through USB port)

General Radio

Carrier frequency: 2.4 - 2.483GHz
Class 2 Radio

Weight

9 grams

Temperature

Operating range of 0° - 50°C

Weight

64 grams

Power Input

Powered by USB bus

Temperature

Operating range of 0° - 50°C

Care and Maintenance

Please read all these instructions to avoid injury to yourself or damage to the product.

Product care

Do not expose headphones or sound stick to extreme temperatures.

Do not apply excessive pressure on headphones or sound stick.

Do not let any foreign matter spill into the headphones or sound stick.

Do not place any heavy object on top of headphones or sound stick.

Do not expose to heat sources.

Do not store in dusty areas.

Do not try to disassemble and repair the device yourself.

On the Road

IMPORTANT: Please follow your local traffic safety instructions and do not wear/use headphones while driving an automobile as this can cause accidents. Driving with headphones on may also be illegal in your area.

Protect your ears

WARNING: Do not use headphones consistently at very high volume levels.

Prolonged listening at very high volume level can cause irreversible damage to your ears. Stop using the headphones if you get a ringing sensation in your ears.

Using the Universal Power Adapter

Use only the Universal Power Adapter that is provided with your headphones. Do not use any substitute power adapter.

Always leave space around power adapter during usage so that adequate airflow is available around the power adapter.

WARNING: Risk of electric shock. Do not tamper with, modify, open or disassemble the power adapter.

Unplug the power adapter when unused for long periods of time or during lightning storms.

Disconnecting the power adapter from power source is the only way to completely remove power.

Use only the USB Charging Cable that is provided along with power adapter.

Battery

The headphones use non removable lithium-polymer battery and following instructions should be followed for safe usage.

Never disassemble or modify the battery.

Stop charging if the battery is not charged even after the given charge time.

While disposing the battery, ensure that local environmental regulations are followed.

If any abnormal phenomena such as odour, discolouration, or deformation is seen any time, stop using/charging the headphones immediately.

Regulatory Information

Exposure to Radio Frequency Radiation

The radiated output power from Class 2 wireless radio of iWiSH Headphones and USB Sound Stick is far below the FCC, and European Union radio frequency exposure limits. Nevertheless, the wireless radio is used in such a manner that the potential for human contact during normal operation is minimized. The internal wireless radio operates within guidelines found in radio frequency safety standards and recommendations, which reflect the consensus of the scientific community.

The level of emitted energy is far less than the electromagnetic energy emitted by wireless devices such as mobile phones. However, the use of wireless radios may be restricted in some situations or environments, such as aboard aeroplanes. If you are unsure of restrictions, you are encouraged to ask for authorization before using the product.

FCC Part 15 Radio Frequency Interference Statement

This device complies with Part 15 of the FCC rules. Operation is subject to the following two conditions:

1. This device may not cause harmful interference.
2. This device must accept any interference received, including interference that may cause undesired operation.

This equipment has been tested and found to comply with the limits for a Class B digital device, pursuant to Part 15 of the FCC rules. These limits are designed to provide reasonable protection against harmful interference in a residential installation. This equipment generates, uses, and can radiate radio frequency energy and, if not installed and used in accordance with the instructions, may cause harmful interference to radio communications. However, there is no guarantee that interference will not occur in a particular installation. If this equipment does cause harmful interference to radio or television reception, which can be determined by turning the equipment off and on, the user is encouraged to correct the interference by one or more of the following measures:

Reorient or relocate the receiving antenna.

Increase the separation between the equipment and the receiver.

Connect the equipment into an outlet that is on a circuit different from the receiver.

Consult the dealer or an experienced radio/TV technician for help.

CAUTION: Pursuant to Part 15.21 of the FCC rules for intentional or unintentional radiators, any changes or modifications not expressly approved by the party responsible for compliance could void the user's authority to operate this equipment.

European Radio Approval Information

The iWiSH Headphones and USB Sound Stick devices are low-power, wireless communication devices, operating in the 2.4 GHz band, intended for home or office use. The power output of this device is well below the RF exposure limits as set by the European Commission through the R&TTE directive.

The iWiSH Headphones and USB Sound Stick devices can be operated in the following European Union and European Economic Area countries: Austria, Belgium, Cyprus,

Czech Republic, Denmark, Estonia, Finland, France, Germany, Greece, Hungary, Iceland, Ireland, Italy, Latvia, Liechtenstein, Lithuania, Luxembourg, Malta, the Netherlands, Norway, Poland, Portugal, Slovakia, Slovenia, Spain, Sweden, Switzerland and the United Kingdom.

CE Declaration of Conformity

The iWiSH Headphones and USB Sound Stick devices are in conformity with the following directives and other normative documents:

R&TTE Directive 1999/5/EC

ETSI EN 300 328

ETSI EN 301 489-1

ETSI EN 301 489-17

Low Voltage Directive (Safety) 73/23/EEC as per EN 60950.

Appendix A: Setting USB Sound Stick as Default Sound Playback Device

How to check the default sound card device and to change it to USB Sound Stick

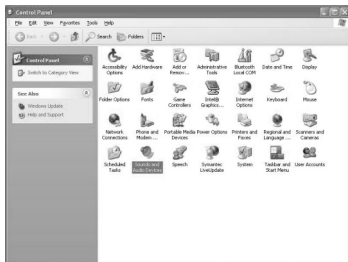
On PC (running WindowsXP)

1. Click 'Start' > 'Control Panel'.

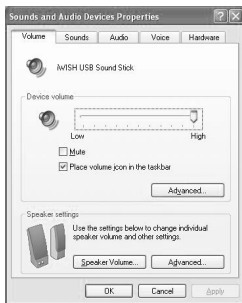


Note: On PC running Windows2000 'Control Panel' can be invoked from 'Start' > 'Settings' > 'Control Panel'.

2. Double-click on 'Sounds and Audio Devices'.



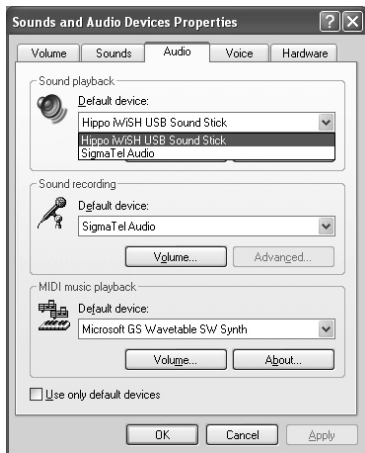
A 'Sound and Audio Devices Properties' window pops up.



3. Click on 'Audio' tab

4. Check the 'Default device' selected under 'Sound playback'

Note: On PCs running Windows2000, 'Default device' is displayed as 'Preferred device'.



5. Under 'Default Device', from the drop down menu, select 'Hippo iWiSH USB Sound Stick' and click 'OK'.

Note: On PCs running Windows2000, the sound stick would appear as 'USB Audio Device' in the drop down menu for 'Preferred device'.

On Mac OS X

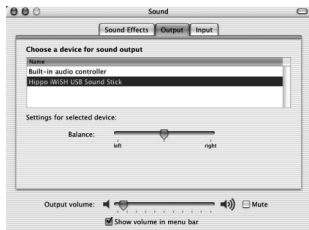
1. Open the Apple Menu and click 'System Preferences'.



2. Open 'Hardware' > 'Sound'.



3. Click 'Output' tab, and select 'Hippo iWISH USB Sound Stick' as device for sound output.



4. Close the window.

Product Warranty

Hippo Lifestyles warrants this product against defects in design, material and workmanship for a period of one year from the date of purchase by end user. The condition of warranty are as follows.

The warranty is valid only if the original receipt issued to the original purchaser by the dealer is presented with the product to be repaired or replaced.

The warranty is void if the serial number, date of purchase and product label are removed from the original receipt.

The warranty does not cover any failure or damage of the product due to normal wear and tear, physical abuse, improper installation, misuse, modification or repairs by unauthorized third parties.

Hippo Lifestyles does not assume responsibility for any loss or damage incurred during shipment as a result of force majeure.

Hippo Lifestyles is not liable for any incidental or consequential damages arising from the use or misuse of the product.

All warranty claims are limited to repair or replacement of the defective product at the sole discretion of Hippo Lifestyles.

Repaired or replaced products shall be warranted for the remaining time of the original warranty period. Repair or replacement may involve the use of functionally equivalent reconditioned units. Replaced part or product becomes the property of Hippo Lifestyles.

Consumable components such as battery, are not included in the warranty obligation.



HIPPO-PRNT-1000EG-01

www.hippolifestyles.com