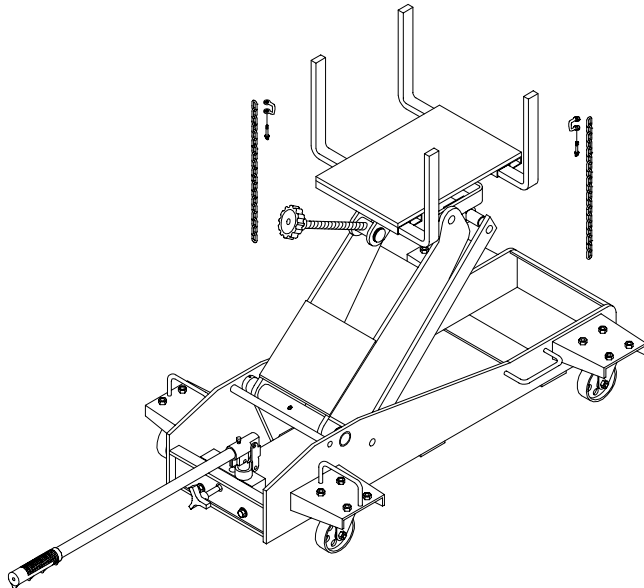


# ATD TOOLS, INC.

## PRODUCT SPECIFICATIONS

MODEL #:	7437
DESCRIPTION:	HYDRAULIC TRANSMISSION JACK
CAPACITY:	1 1/2 TON
JACK SIZE:	46 3/4" (L) X 25 5/8" (W) X 9 7/8"(H)
MIN. HEIGHT:	7 7/8"
MAX. HEIGHT:	37 1/4"
HANDLE LENGTH:	29 1/2"
OPERATING FORCE:	67.0 LBS
SADDLE DIM.:	15 1/2" X 13 1/4" 24 7/8" X 19" (extended)
F. WHEEL DIA.:	3 7/8"
F. WHEEL WIDTH:	1 1/8"
R. WHEEL DIA.:	3 7/8"
NET WEIGHT:	314.6 LBS
VOLUME OF HD. OIL:	460 C.C.
GROSS WEIGHT:	376.2 LBS
WOODEN CRATE DIM.:	49 7/8" (L) X 25 5/8" (W) X 11 1/4" (H)
CUFT.:	8.11 CUFT (104 PCs/ 20' CTN)



### FEATURE

- MEETS ASME/ANSI - PALD SAFETY STANDARDS
- LIFTING RANGE: 7 7/8" TO 37 1/4"
- PATENTED BUILT-IN BY-PASS DEVICE MECHANISM
- THE ADJUSTABLE HEAD CAN BE TILTED FORWARD AND BACK FOR OPTIMUM ALIGNMENT OF TRANSMISSION BOLT PATTERNS



## SPARE PARTS LIST

Model # Atd-7437

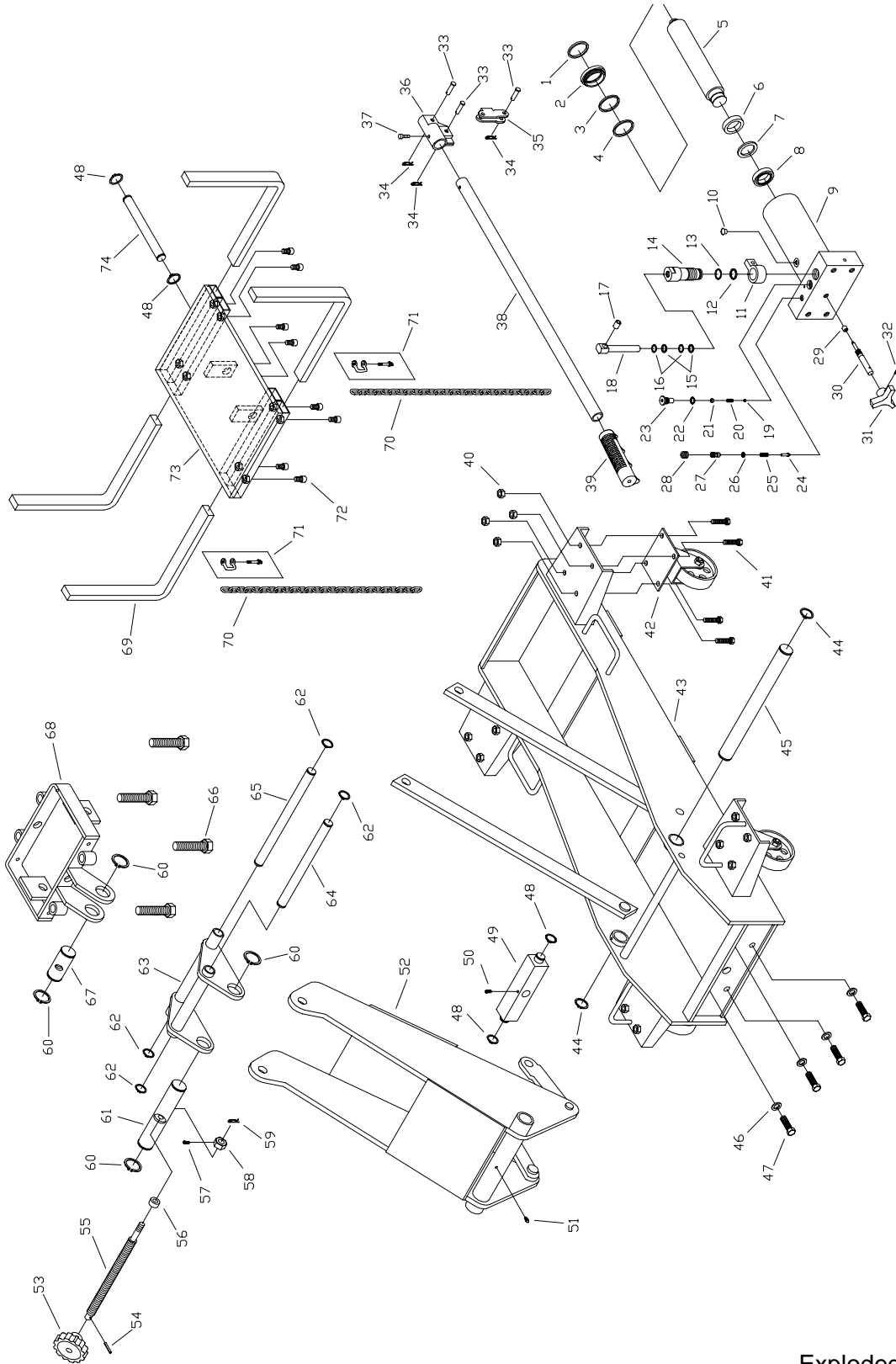
ITEM	PARTCODE	DESCRIPTION	QTY	ITEM	PARTCODE	DESCRIPTION	QTY
1	*	seal	1	39	506-9-0264-106	handle grip	1
2	186-6-1810-102	guide ring	1	40	661-2-0095-017	nut	16
3	*	o-ring	1				
4	186-6-1204-103	guide ring	1	41	653-1-0095-017	bolt	16
5	*	piston rod	1	42	G62-4-5200-104	wheel assy.	4
				43	*	chassis	1
6	187-6-1209-100	ram bearing	1	44	667-5-0320-009	retaining ring "C"	2
7	*	back-up ring	1	45	G62-6-4106-109	main pivot pin	1
8	*	u-cup	1				
9	*	base assy.	1	46	605-3-0127-405	lock washer	4
10	*	oil filler screw	1	47	653-1-0127-409	hex. bolt	4
				48	667-5-0200-009	retaining ring "C"	4
11	G62-6-1402-108	bracket	1	49	G62-6-3007-102	piston rod axle	1
12	*	o-ring	1	50	653-1-0060-072	hex. bolt	1
13	*	back-up ring	1				
14	G62-6-1401-106	pump cylinder	1	51	601-8-0006-001	grease fitting nipple	1
15	*	o-ring	2	52	*	lift arm assy.	1
				53	G52-6-1709-106	knob	1
16	*	back-up ring	2	54	601-4-0040-034	spring pin	1
17	G46-6-1307-106	collor	1	55	G62-6-4501-105	adjustable screw	1
18	G62-6-1306-102	pump piston	1				
19	601-7-0008-009	steel ball	1	56	G36-3-5100-108	bearing	1
20	521-2-0062-011	compression spring	1	57	644-1-0060-053	hex. socket set screw	1
				58	G52-6-1403-102	set nut	1
21	601-7-0014-013	steel ball	1	59	602-4-0025-017	cotter pin	1
22	*	o-ring	1	60	667-5-0350-008	retaining ring "C"	4
23	G52-6-1212-105	screw	1				
24	414-6-1216-107	needle	1	61	G62-6-4208-105	stationary rod	1
25	512-2-0067-010	safety spring	1	62	667-5-0210-103	retaining ring "C"	4
				63	G62-3-4300-107	saddle base	1
26	*	o-ring	1	64	G62-6-4303-101	pin - parallel link	1
27	414-6-1215-307	safety valve screw	1	65	G62-6-4310-108	rod	1
28	G52-6-1213-107	set screw	1				
29	*	oil seal	1	66	G62-3-4502-109	screw assy.	4
30	G62-6-1701-108	release valve	1	67	G62-6-4207-103	stationary rod	1
				68	G62-3-4203-109	support saddle base	1
31	G34-6-1709-104	release knob	1	69	G62-6-4302-109	support bar	4
32	601-4-0030-059	spring pin	1	70	G36-6-7000-102	chain	2
33	566-4-0080-508	pin	1				
34	513-5-0016-018	retaining pin	1	71	G52-4-4102-101	chain & hook	4
35	G62-6-1309-108	linkage	1	72	649-1-0095-103	hex. socket set screw	8
				73	G62-3-4200-101	saddle assy.	1
36	*	handle sleeve	1	74	G62-4-4202-103	rod	1
37	644-1-0060-044	hex. bolt	1				
38	G46-6-2101-101	handle	1				

\* part is not available



# 1 1/2 Ton Low Profile Transmission Jack

Model # Atd-7437



Exploded Drawing  
1st Edition © Feb. 2001