

A close-up, profile view of a man with short brown hair, smiling and looking forward. He is wearing a black Sennheiser HME 95 headset with a boom microphone. The background is slightly blurred, showing the interior of an aircraft cockpit with a steering yoke and control panels. The lighting is bright, suggesting daylight.

HME 95

Headset for
general aviation

Instruction manual

 **SENNHEISER**

Contents

Important safety instructions	2
Delivery includes	3
The HME 95 headset	4
Operating elements	5
Preparing the headset for use	6
Connecting the headset	6
Connecting a mobile telephone	6
Connecting an additional audio player	7
Adjusting the microphone sensitivity	8
Switching between mono and stereo mode	8
Using the headset	9
Attaching the cable clip	9
Adjusting the headset	9
Adjusting the volume	10
Folding up the headset	11
Care and maintenance	12
Replacing the ear pads	12
Replacing the wind shield	13
Specifications	14
Manufacturer declarations	16

Thank you for choosing Sennheiser!

We have designed this product to give you reliable operation over many years. Over 60 years of accumulated expertise in the design and manufacture of high-quality electro-acoustic equipment have made Sennheiser a world-leading company in this field. Please take a few moments to read these instructions carefully, as we want you to enjoy your new Sennheiser products quickly and to the fullest.

Important safety instructions



- Please read these instructions carefully and completely before using the headset.
- Make these instructions easily accessible to all users at all times. Always include these instructions when passing the headset on to third parties.
- During flight operation, do not use the headset for telephone calls.
- The headset is capable of producing sound pressure levels exceeding 85 dB(A). In many countries 85 dB(A) is the maximum legally permissible level for continuous noise exposure during the working day. Exposure to sounds of higher volume levels or for longer durations can permanently damage your hearing!
- Never repair or attempt to repair a defective headset yourself. Contact your Sennheiser agent or the Sennheiser Service Department.
- Only replace those parts of the headset whose replacement is described in this manual. All other parts of the headset must be replaced by your Sennheiser agent.
- Protect the headset from humidity. Use only a slightly damp cloth to clean the headset. For information on how to clean the headset, contact your Sennheiser agent.

Intended use of the headset

Intended use includes:

- having read these instructions, especially the chapter “Important safety instructions” on page 2,
- using the headset within the operating conditions and limitations described in this instruction manual.

Improper use means using the headset other than as described in these instructions, or under operating conditions which differ from those described herein.

Delivery includes

Delivery of the HME 95 headset includes:

- 1 HME 95 headset
- 1 soft case
- 1 cable clip
- 2 MZW 46 wind and pop shields
- 1 audio-in cable for mobile telephones, length 0.6 m, with two 2.5 mm jack plugs
- 1 audio-in cable for additional audio players, length 0.6 m, with two 3.5 mm jack plugs
- 1 instruction manual

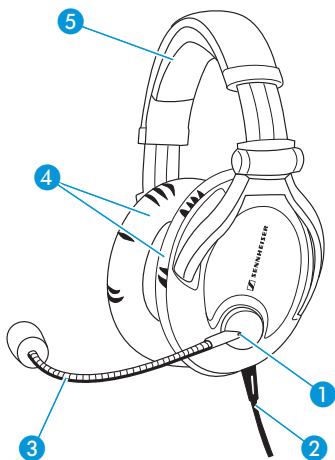
The HME 95 headset

The HME 95 headset features closed, dynamic, circumaural stereo headphones.

Features

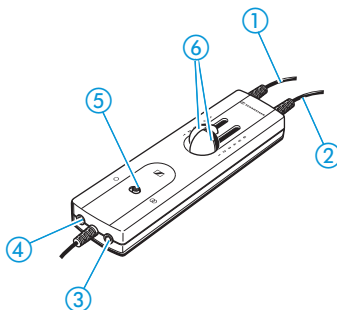
- Outstanding transmission quality for clear communications
- Good passive attenuation of ambient noise
- Foldable design for space-saving storage and transportation
- Noise-compensating boom microphone ensures excellent speech transmission
- Flexible microphone boom
- Separate left and right channel volume control
- Peak level protection safeguards your ears from volume peaks above 110 dB
- Excellent comfort resulting from soft ear pads and headband padding
- Audio-input facility for external audio sources, such as mobile phones, MP3 players

Operating elements



Headset

- ① Microphone sensitivity control
- ② Headset cable
- ③ Microphone boom
- ④ Earpads
- ⑤ Headband

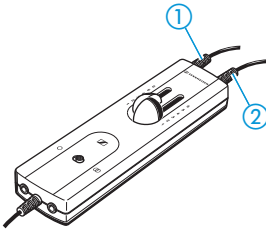


Operating control integrated in the cable

- ① Cable with microphone plug, 5.25 mm jack plug
- ② Cable with headphone plug, 1/4" (6.35 mm) jack plug
- ③ 3.5 mm jack socket for connecting an additional audio player (3-pin)
- ④ 2.5 mm jack socket for connecting a mobile telephone (3-pin)
- ⑤ Mono/stereo switch
- ⑥ Separate left and right channel slide volume controls

Preparing the headset for use

Connecting the headset



The headset's operating control features two cables with one jack plug each.

- ▶ Connect the headset to the corresponding sockets of your intercom.

Connector	for connection to the
1/4" (6.35 mm) jack plug ②	headphone output
5.25 mm jack plug ①	microphone input

Connecting a mobile telephone

The 2.5 mm jack socket (3-pin) ④ allows you to connect a mobile telephone. For this purpose, the microphone plug ① must be connected to the aircraft radio/intercom.

DANGER!



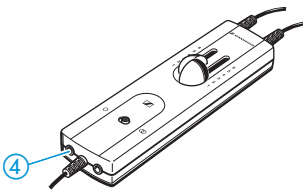
Danger of accident due to reduced attention!

Making telephone calls or operating the mobile telephone limits your attention and may cause accidents.

- ▶ During flight operation, do not use the headset for telephone calls!



For the latest list of compatible mobile telephones, please refer to the „Professional Audio“ > „Aviation Headsets“ section on our website at www.sennheiser.com.



- ▶ Connect the audio cable to the 2.5 mm jack socket (3-pin) ④ on the operating control and to the corresponding jack socket on your mobile telephone (4-pin).
You can adjust the volume of the mobile telephone via the headset's operating control. However, the functions of the mobile telephone cannot be controlled via the headset's operating control.
- ▶ Set the headset to mono mode (see "Switching between mono and stereo mode" on page 8).
- ▶ Operate your mobile telephone as usual and observe the manufacturer's instructions.
Audio from the mobile telephone and from the intercom are heard simultaneously through the headset.

Connecting an additional audio player

The 3.5 mm jack socket ③ allows you to connect and listen to an additional audio player (e.g. MP3 player) through the headset.

DANGER! Danger of accident due to reduced attention!



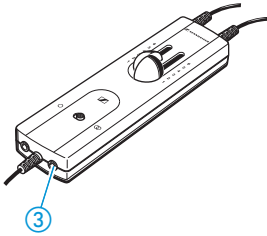
Listening to music or operating an audio device limits your attention and may cause accidents.

- ▶ During flight operation, do not use the headset for listening to additional audio sources!

Hearing damage due to high volumes!

This headset is capable of producing high sound pressure levels. Higher volumes or longer durations can damage your hearing!

- ▶ Set the volume to a medium level. Make sure that you can hear critical sounds such as warning alarms.



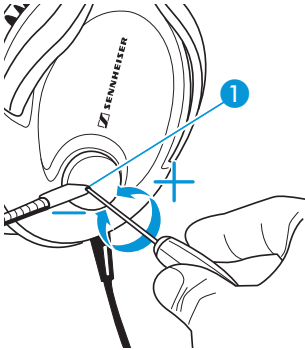
- ▶ Connect the audio cable to the 3.5 mm jack socket ③ on the operating control and to the corresponding jack socket on your audio player.
Audio from the additional audio source and from the intercom are heard simultaneously through the headset.

Adjusting the microphone sensitivity

The microphone sensitivity has been factory pre-set to 80 mV/Pa as per RTCA DO-214.

To change the input sensitivity of the microphone:

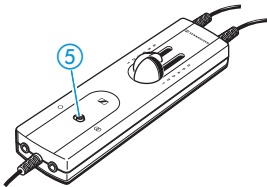
- ▶ Use a suitable slotted screwdriver.
- ▶ Turn the microphone sensitivity control ① as shown.



Switching between mono and stereo mode

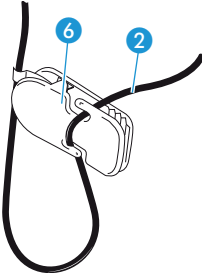
The mono/stereo switch ⑤ allows you to switch between mono and stereo mode, depending on the intercom system.

- ▶ Set the mono/stereo switch ⑤ to the desired position:
 - ○ mono
 - ⊖ stereo



Using the headset

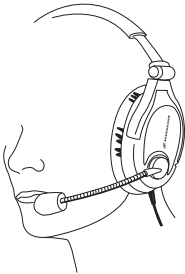
Attaching the cable clip



The cable clip **6** allows you to attach the headset cable **2** to your clothing so that the cable doesn't hinder or distract you.

- ▶ Guide the headset cable **2** through the cable clip **6**.
- ▶ Attach the cable clip **6** to your clothing.

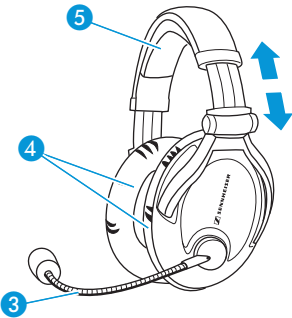
Adjusting the headset

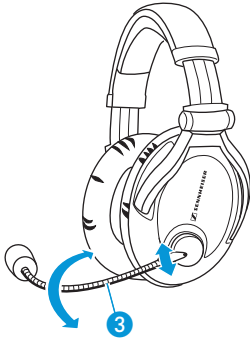


- ▶ Wear the headset so that
 - the microphone boom **3** is on the left side of the mouth (see right/left labeling on the headband joints),
 - the headband **5** runs over the top of your head.
- ▶ Adjust the length of the headband so that
 - your ears are completely inside the earpads **4**,
 - you feel even, gentle pressure around your ears,
 - a snug fit is ensured.

In this way, optimum transmission quality, good noise attenuation and best possible comfort is ensured.

- ▶ Final adjustment is best made in a noisy environment.





- ▶ Bend the microphone boom ③ so that the microphone is placed at the corner of the mouth. Maintain a distance of approx. 2 cm between microphone and mouth.

Adjusting the volume

CAUTION!

Hearing damage due to high volume levels!



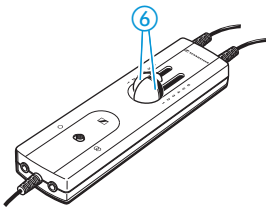
The headset is capable of producing high sound pressure levels. Higher volumes or longer durations can damage your hearing!

- ▶ Adjust the volume to a medium level. Make sure that you can hear critical sounds such as warning alarms.

You can adjust the volume directly on the intercom or via the headset's operating control.

To adjust the volume for the left or right channel:

- ▶ Slide one of the two volume controls ⑥
 - upwards to increase the volume or
 - downwards to reduce the volume.



Folding up the headset

For **space-saving** transportation, the headset can be folded up in different ways:

To fold up the headphones as **flat** as possible:

- ▶ Rotate the earcups by 90° and turn the microphone boom flat as shown.

To fold up the headphones as **compact** as possible:

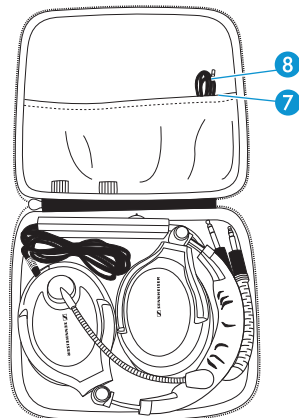
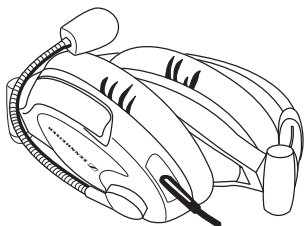
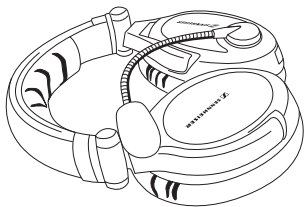
- ▶ Tuck the earcups between the headband as shown.

For **safe** transportation of the headset, use the supplied soft case and fold the headset as follows:

- ▶ Rotate the earcups by 90°.
- ▶ Turn the microphone boom flat as shown.
- ▶ Pull out the right earcup and then fold it in.
- ▶ Place the headset flat into the soft case as shown.

The accessories can be transported in the cover of the soft case:

- ⑦ audio cable (two 3.5 mm jack plugs)
- ⑧ audio cable (two 2.5 mm jack plugs)
- MZW 46 wind and pop shields



Care and maintenance

CAUTION!



Liquids can damage the electronics of the headset!

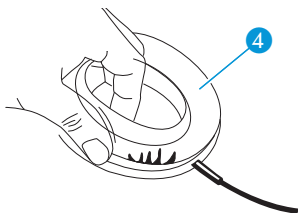
Liquids entering the housing of the headset can cause a short-circuit and damage the electronics.

- ▶ Only use a soft, slightly damp cloth to clean the headset. Do not use any solvents or cleansing agents.

-
- ▶ Use a soft, slightly damp cloth to clean the headset from time to time.

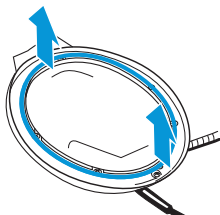
Replacing the ear pads

You can replace the ear pads. Spare ear pads are available as accessories.

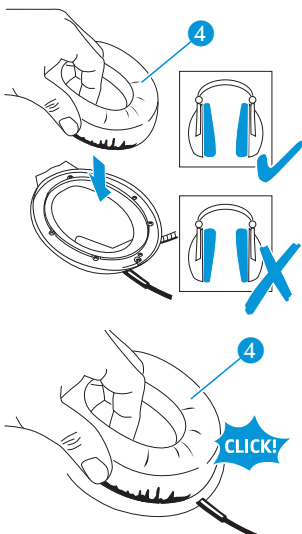


Accessories are available from your Sennheiser partner. A list of suitable accessories can be found on our website at www.sennheiser.com > „Service & Support“.

-
- ▶ Grasp the edge of the ear pad ④ and peel it up and away from the ear cup.



When removing the ear pads, it might be that a black plastic ring remains on the ear cup. Remove this ring before attaching the new ear pads.



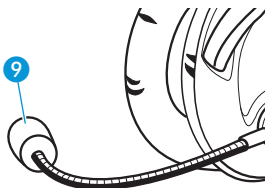
- ▶ Attach the ear pad 4 so that the side with the thicker padding points downwards as shown.

- ▶ Press the new ear pad 4 onto the ear cup until it clicks audibly into place. Repeat for the other ear cup.

Replacing the wind shield

You can replace the wind shield. The HME 95 is supplied with a spare wind shield.

- ▶ Carefully pull the wind shield 9 from the microphone.
- ▶ Slide-on the new wind shield 9 and ensure that it fits securely over the microphone.



Specifications

General data

Weight without cable	approx. 275 g
Temperature range (operation)	-10 to +55 °C
Temperature range (storage)	-55 to +55 °C
Cable length	1.85 m
Headphone connector	¼" (6.35 mm) jack plug
Microphone connector	5.25 mm jack plug
Additional features	mono/stereo switch, line input mobile telephone input peak level protection

Headphones

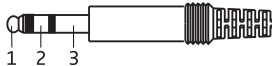
Transducer principle	dynamic, closed
Ear coupling	circumaural
Frequency response	8–28,000 Hz
Nominal impedance	225 Ω mono 300 Ω stereo
Sound pressure level	stereo 100 dB at 1 kHz, 1 V mono 97 dB at 1 kHz, 1 V
THD at 94 dB SPL	< 1 %
Attenuation	13–34 dB passive attenuation
Contact pressure	approx. 5 N

Microphone incl. preamplifier

Type	BKE 46
Transducer principle	pre-polarized condenser microphone, noise-compensating
Frequency response	350–6,000 Hz
Output voltage	80 mV/Pa (factory pre-set) = 800 mV at 114 dB SPL (adjustable from 17–100 mV/Pa)
Terminating impedance	150–2,200 Ω
Supply voltage	8–16 V DC

Connector assignment

1/4" (6.35 mm) jack plug



- 1 Audio Hi left
- 2 Audio Hi right
- 3 Audio Lo

5.25 mm jack plug



- 1 not assigned
- 2 Microphone Hi
- 3 Microphone Lo

Manufacturer declarations

Warranty

Sennheiser electronic GmbH & Co. KG gives a warranty of 36 months on this product.

For the current warranty conditions, please visit our website at www.sennheiser.com or contact your Sennheiser partner.

CE Declaration of Conformity



This equipment is in compliance with the essential requirements and other relevant provisions of Directive 2004/108/EC.

The declaration is available at www.sennheiser.com.

Before putting the device into operation, please observe the respective country-specific regulations!

Batteries



The supplied batteries can be recycled. Please dispose of them as special waste or return them to your specialist dealer. In order to protect the environment, only dispose of exhausted batteries.

WEEE Declaration



Please dispose of this product by taking it to your local collection point or recycling centre for such equipment.

Sennheiser electronic GmbH & Co. KG

Am Labor 1, 30900 Wedemark, Germany
www.sennheiser.com

Printed in China, Publ. 05/10, 516577/A03

