



PLANTRONICS
SOUND INNOVATION™

→ ● ● ● → USER GUIDE

PLANTRONICS PULSAR™ 260

STEREO BLUETOOTH HEADSET



WELCOME

This user guide provides instructions on the setup and usage of the Plantronics Pulsar™ 260 Bluetooth® Headset. Before getting started, please review the safety booklet included in your package.

For additional help, service or support information, refer to product warranty card or Troubleshooting on page 9, or visit www.plantronics.com.

TABLE OF CONTENTS

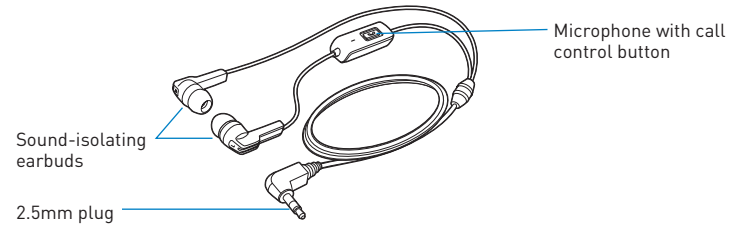
Package contents and features	3
Charging	4
Powering	4
Indicator lights	4
Pairing	5
Making/answering/ending calls	5
Wearing options	6
Powered speaker & stereo uses	6
Pod controls	7
Headset controls	8
Troubleshooting	9
System reset	9
Product specifications	10
Technical assistance	10
Regulatory Information	11
Warnings	12

Register your product online

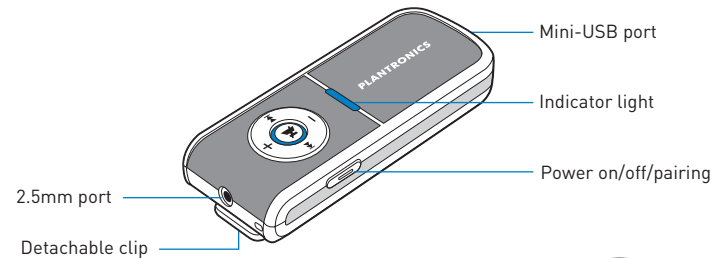
Visit www.plantronics.com/productregistration to register your product online so that we can provide you with the best possible service and technical support.

PACKAGE CONTENTS & FEATURES

Pulsar 260 headset



Stereo Bluetooth pod



Audio-out cable

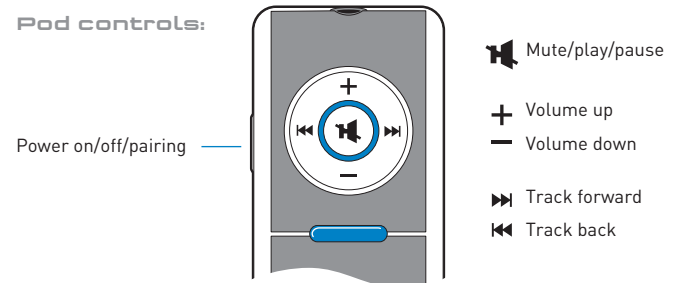


AC charger



Lanyard

Pod controls:

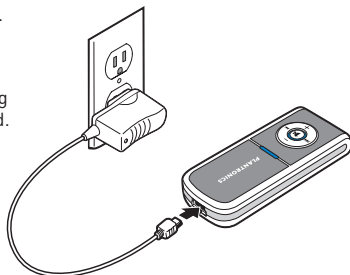


CHARGING

You must charge for 3 hours before first use.

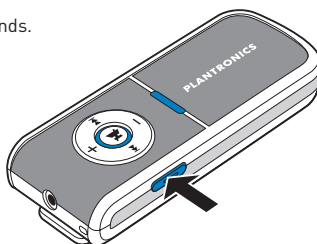
To charge, connect AC charger to pod mini-USB socket.

Pod indicator light flashes red when charging and changes to solid blue when fully charged.






POWERING ON/OFF

Press and hold power on/off switch for >2 seconds.



POD INDICATOR LIGHTS

Action	Light
Charging	Flashes red
Fully charged	Solid blue
Power/battery status	3 red flashes. =  2 red flashes. =  1 red flash. = 
Pairing/connect	Flashes red and blue
Bluetooth pod connected to headset	Flashes blue

NOTE: Flashes red when headset is initially powered on.

PAIRING

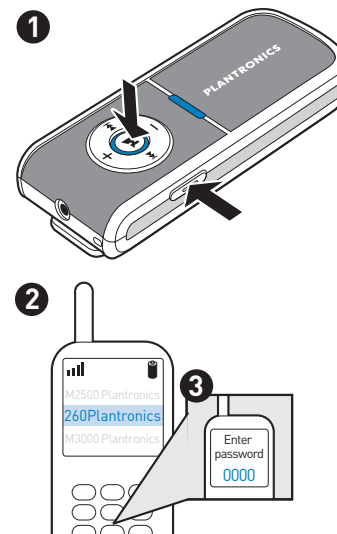
To pair pod with phone:

Begin with pod powered on.

1. Press and hold both the mute/play/pause button and the power on/off/pairing button simultaneously. When the indicator light flashes red and blue, release buttons.
2. While pod is flashing red and blue, use the phone menu to search for Bluetooth devices and select "260 Plantronics".
3. When prompted for password, enter **0000**.

Pod flashes blue when paired successfully.

For set up and pairing instructions with Bluetooth devices other than mobile phones, please consult your Bluetooth device user guide.



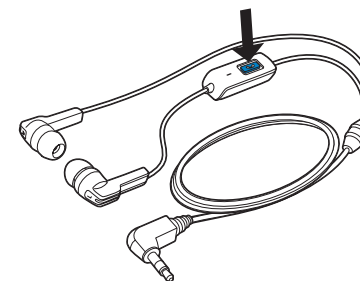
MAKING/ANSWERING/ENDING CALLS

To make a call:

Dial on phone; call transfers automatically to headset.

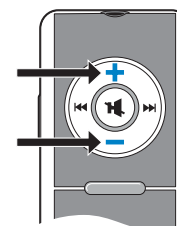
To answer or end a call:

Briefly press call control button on headset.



To adjust volume:

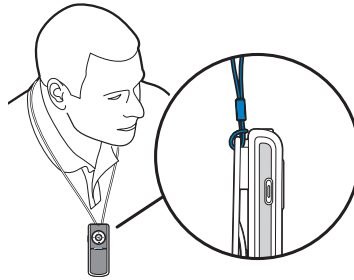
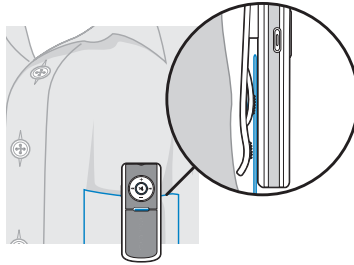
Short press **+** or **-** buttons on pod for incremental change, hold for continuous change.



WEARING OPTIONS

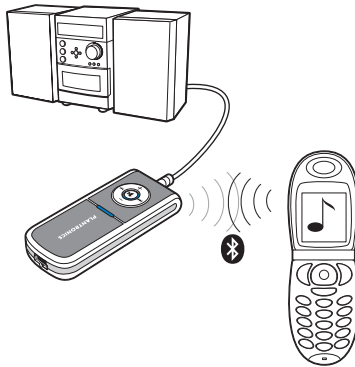
Pulsar 260 can be worn in two ways:

- Clipped to your belt or clothing
- Around your neck using the lanyard



POWERED SPEAKER & STEREO USES

For public listening you can connect the stereo Bluetooth pod directly to powered speakers or your home stereo with the included audio-out cable (provided your speakers/home stereo is fitted with a Line-in or Auxiliary 3.5mm audio socket). Please consult your equipment guide.



1. Ensure the stereo Bluetooth pod and your speakers/home stereo are powered off.
2. Connect the audio-out cable 2.5mm plug to the stereo Bluetooth pod and the 3.5mm plug to the powered speakers/home stereo Line-in or Auxiliary 3.5mm audio socket as shown below.
3. Power on both the stereo Bluetooth pod and your speakers/home stereo.

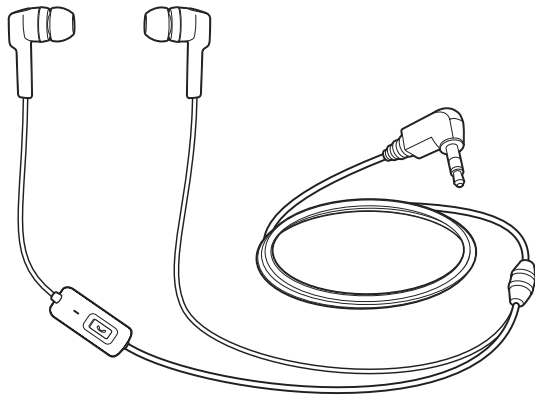
POD CONTROLS



KEY	FEATURE	Action	Tone
	Power on/off	Short press	No tone
	Track forward and back*	Short press to skip to next track or to go back to previous track	High tone
	Mute call/audio	Short press to mute/unmute	Repeating low tone every 60 seconds
	Play and pause*	Short press to pause/resume audio	High tone
	Adjusting volume	Short press	Mid tone for each adjustment, double low tone at limit

**Only works if Bluetooth device supports Bluetooth Audio/Video Remote Control Profile (AVRCP).*

HEADSET CONTROLS



KEY	FEATURE	Action	Tone
	Making/answering/ending calls	Short key press	High tone
	Switching an active call from headset to phone or phone to headset	Long key press	High tone followed by low

Hands-free features

KEY	FEATURE	Action	Tone
	Activate last number redial	Double short key press	High tone for each key press
	Activate voice dial	Long key press	High tone followed by low
	Call reject	Long key press	High tone followed by low

Features must be supported by Bluetooth device or service provider.

TROUBLESHOOTING

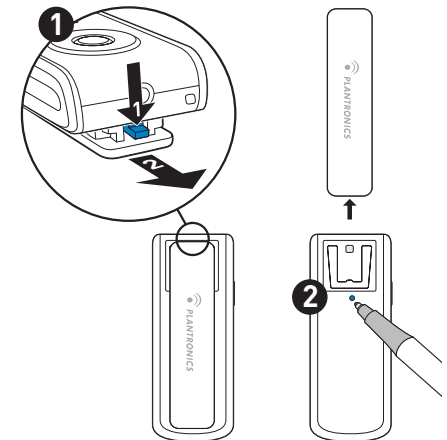
Problem	Solution
My headset does not work with my phone.	<ul style="list-style-type: none"> See page 5 "Pairing". Perform a reset on Pulsar 260 as described below.
Callers cannot hear me.	<ul style="list-style-type: none"> Headset is muted. Press the mute button on the pod to unmute the microphone. Ensure pod is powered on and headset is paired with audio device. See page 5 "Pairing".
Callers say my voice is too quiet.	Ensure that microphone is pointing towards your mouth.
I cannot hear caller/dial tone or audio sound.	<ul style="list-style-type: none"> Pod is turned off. Check the indicator light for status. Headset is out of range. Walk to within 10 metres of the phone and check the Bluetooth link on your phone's display. Battery is dead. Charge your battery using the AC power adapter supplied. Listening volume is too low. Press the volume/mute button to increase the sound heard in the headset.
I cannot hear music from my powered speakers/Hi-Fi when using the audio-out cable.	<ul style="list-style-type: none"> Pod must be turned on and connected to the powered speakers/Hi-Fi with the audio-out cable. Check music player on Bluetooth phone is switched on and Pulsar 260 is the active Bluetooth device.

SYSTEM RESET

A reset button is located (recessed) behind the clothing clip.

To reset:

1. Remove clip as shown at right.
2. Press and release button using a pen.



PRODUCT SPECIFICATIONS

Listen time*	Up to 7 hours
Talk time*	Up to 9 hours
Standby time*	Up to 200 hours
Charge time	3 hours
Range	Bluetooth standard 10 metres
Headset and pod weight	25 grams
Power requirements	5VDC - 300 mA
Battery type	Lithium ion polymer
Speaker frequency response	<ul style="list-style-type: none"> • Telephony 300 Hz to 3600 Hz (CVSD) • Stereo audio 20 Hz to 20 kHz (16-bit 48 kHz SBC coding)
Impedance	32 +-4 Ohms x1 kHz
Distortion	<5% to 19 kHz
Version	Bluetooth 2.0

Supports Bluetooth hands-free and headset profiles, Advanced Audio Distribution Profile (A2 DP), Audio/Video Remote Control Profile (AVRCP) and Generic Audio/Video Distribution Profile (GAVDP). For stereo sound, Bluetooth-enabled devices must support the Advanced Audio Distribution Profile (A2DP).

* Performance may vary by device.

TECHNICAL ASSISTANCE

Visit our web site at www.plantronics.com/support for technical support including frequently asked questions, compatibility and accessibility information.

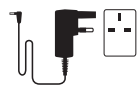


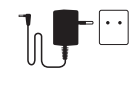
The Plantronics Technical Assistance Centre (TAC) is also ready to assist you on **0800 410014** from the UK.

EXPOSURE TO RF RADIATION

The internal wireless radio operates within the guidelines found in radio frequency safety standards and recommendations, which reflect the consensus of the scientific community. Independent studies have shown that the internal wireless radio is safe for use by consumers. Visit www.plantronics.com for more information.

NOTE: Modifications not expressly approved by Plantronics, Inc. could void the user's authority to operate the equipment.

MODEL AND COUNTRY INFORMATION

37677-04		<input checked="" type="checkbox"/> GBR	 
37677-05		<input checked="" type="checkbox"/> AUT, BEL, DEU, DNK, ESP, FRA, GRC, ITA, IRL, LUX, NLD, PRT, SWE, FIN, CYP, CZE, EST, HUN, LVA, LTU, MLT, POL, SVK, SVN.	

WARNINGS

WARNING: Use of a headset that covers both ears will impair your ability to hear other sounds. Use of such a headset while operating a motor vehicle or riding a bicycle may create a serious hazard to you and/or others and is illegal in most regions.

Do not use headphones/headsets at high volumes for an extended period of time. Doing so can cause hearing loss. Always listen at moderate levels.



PLANTRONICS
SOUND INNOVATION™

Plantronics Ltd

Interface Business Park
Bincknoll Lane
Wootton Bassett
Wiltshire SN4 8QQ, ENGLAND
Tel: 0800 410 014

Plantronics B.V.

Hoofddorp, Nederland
Tel: 0800 752 6876 (NL)
00800 752 687 66 (BE/LUX)

Plantronics Sarl

Noisy-le-Grand, France
No Indigo: 0825 0825990
15 4 TTC/mn
+33 14167 4141

Plantronics GmbH

Hürth, Deutschland
Tel: 0800 9323400
Österreich: 0800 242 500
Schweiz: 0800 932 340

Plantronics Acoustics

Italia Srl
Milano, Italia
Numero Verde: 800 950 934

Plantronics Iberia, S.L.

Madrid, España
Tel: 902 415 191
+34 91 640 47 44 (ES)
Tel: 800 844 517 (PT)

Nordic Region

Tel: Finland: 0800 117 095
Tel: Sverige: 02002 14681
Tel: Danmark: 8088 4610
Tel: Norge: 800 113 36

Plantronics Middle East, Eastern Europe and Africa

Tel: +44 1793 842 443

Plantronics, Inc.

345 Encinal Street
Santa Cruz, CA95060 USA
Tel: 1 831 426 5868

©2006 Plantronics, Inc. All rights reserved. Plantronics, the logo design, Plantronics Sound Innovation and Pulsar are trademarks or registered trademarks of Plantronics, Inc. The *Bluetooth*® word mark and logos are owned by the Bluetooth SIG, Inc. and any use of such marks by Plantronics, Inc. is under licence.

Patents Pending.

Printed in USA.

37771-01 (05-06)