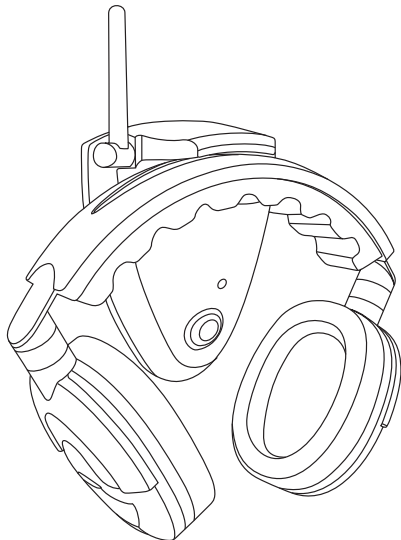


Lenco



HP-2000
INSTRUCTION MANUAL

1. INTRODUCTION & WARNINGS

Thank you for purchasing this radio frequency wireless headphone. The result of our advanced using state-of-the-art electronic design. To achieve the best results from this product, please read this manual carefully before operating this product.

In no circumstances attempt to open this product. The presence of high voltages or radio frequency emissions means that maintenance should only be carried out by the appointed service centers.

2. ATTENTION

To avoid risk of electric shock, DO NOT expose this product to water or dampness.

The technical assistance service manual contains important maintenance instructions for the safety of the product.

3. PRECAUTIONS

DO NOT Place this product on a very hot or very cold surface & keep out of direct sunlight.

Avoid using or storing the product in a dusty or damp area, in any unstable location or in any magnetic zone.

Always keep & operate this product in a well-ventilated environment. DO NOT use petrol, gasoline, thinner or any solvent to clean the product. Remove dust or stains with a damp cloth only.

Do not use oil or grease any mechanical parts. All moving parts in this produce were thoroughly lubricated & sealed in the factory & require no further lubrication.

If any liquids should accidentally fall on or get in to the product, immediately switch off the power &contact an authorized service center or a qualified & registered electrician for assistance. Before using the product with the approved power adapter provided, ensure the electric power supply in your country is compatible with the voltage rating of the provided power adapter.

Use ONLY the provided power adapter. Never use other power adapters even if they have the same specifications or rating.

Do not insert or remove the power adapter for the electric outlet with wet or damp hands.

Remove the power adapter from the electric outlet if the product is not in use for a long time.

When inserting or removing the power adapter from any electric outlet, pull the plug only.

Never pull or jerk the cable to avoid the risk of electric shock due to damage to the cable.

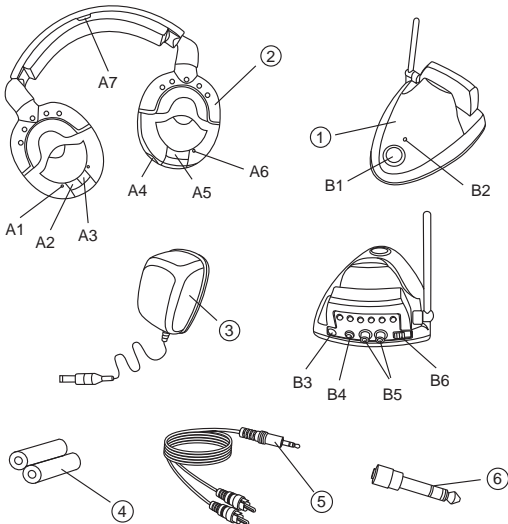
4. FOR EUROPEAN VERSION: 863-865 MHz

This product confirms to CE R&TTE 1999/ 5/ EC (for EU countries) regarding radio appliances and telecommunications terminals and the recognition of their conformity (R&TTE) & subsequent modifications EEC/ 92/ 31 & EEC/ 93/ 68 regarding observance of the essential electromagnetic compatibility (EMC) & radio frequency spectrum (RF Spectrum) requirements.

NOTE: Due to continuing development of the products, the specifications and design of this product is subject to change without prior notice.

5. SYSTEM COMPONENTS

- Transmitter
- Stereo Headphone (RECEIVER)
- 12V AC/Dc Power Adapter (FOR TRANSMITTER)
- Ni-MH Rechargeable Battery (2 x AAA Applicable for rechargeable version only)
- 3.5mm-2RCA audio connection cable
- 3.5mm-6.3mm audio connection plug



6. POSITION OF CONTROLS

HEADPHONE

- A1. RECHARGE CYCLE INDICATOR
- A2. POWER ON/OFF BUTTON
- A3. POWER ON INDICATOR
- A4. VOLUME CONTROL
- A5. AUTOSCAN BUTTON
- A6. AUTOSCAN INDICATOR
- A7. RECHARGE CONTACT POINT*

TRANSMITTER

- B1. POWER ON/OFF BUTTON
- B2. POWER ON INDICATOR
- B3. 12V DC SOCKET FOR POWER ADAPTER
- B4. AUDIO INPUT " A " 3.5MM AUDIO INPUT PORT
- B5. AUDIO INPUT " B " 2-RCA AUDIO INPUT PORT
- B6. CHANNEL SELECT SWITCH

7. POWER SUPPLY & CONNECTIONS

TRANSMITTER

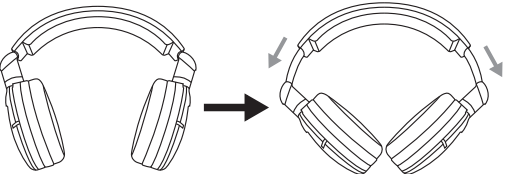
- Connect the plug of the provided power adapter to the 12V DC socket of the transmitter.
- Connect the appropriate audio input to the transmitter using the provided audio cable to AUX OUT or LINE OUT of the audio source. If not available, connect to the headphone outlet & adjust the volume to lowered position.
- Connect the power adapter to electric outlet.
- Turn on the transmitter (ensure the audio source is operating)

NOTE: Always remember to remove the power adapter form the electric outlet when the product is not in use.

STEREO HEADPHONE (RECEIVER)

- Open the battery compartment by gently turning the cushion of the headphone anti-clockwise.
- Insert 2 UM4 "AAA" 1.5V batteries & ensure the polarities are correct.
- Replace the battery cover by aligning the cushion to the original position & turning clock-wire until the cushion is locked.

Warning: Please pull out the head strap before wearing, otherwise it will break the headphones



NOTE: FOR RECHARGEABLE VERSION ONLY

Please ensure the batteries are fully charged before operating.

DO NOT REPLACE RECHARGEABLE BATTERIES WITH ALKALINE OR ANY OTHER BATTERIES TO AVOID RISK OF ELECTRIC SHOCK OR EXPLOSION BY CHARGING BATTERIES THAT ARE NOT RECHARGEABLE.

Always remember to remove batteries from the headphone when the product is not in use for a long time to prevent any leakage of electrolyte liquid from exhausted batteries & avoiding any damage to the product.

Replace exhausted batteries immediately.

Help protect your environment, dispose of exhausted batteries in special recycle containers (where provided)

ANY DAMAGE CAUSED BY LEAKAGE OF ELECTROLYTE LIQUID WILL NOT BE COVERED BY WARRANTY.

8. OPERATION

- Switch on the audio source connected to the transmitter (stereo system/TV etc). If connected to the headphone outlet, adjust the volume to a low setting or to about 5-10% of the total volume setting.
- Switch On the transmitter by pressing the power button. (The power indicator will illuminate)
- Select the channel on the transmitter.
- Switch on the headphone by pressing the power button. (The power indicator will illuminate)
- Press the AUTOSCAN button to scan for the reception from the transmitter. (The AUTOSCAN INDICATOR will flash during scanning mode & illuminate when a stereo signal is detected).
- Adjust the volume control to a suitable level.
- To switch off the system, Press the power button on both the transmitter & headphone. The power indicators on both transmitter & headphone will go off.

NOTE: Always remember to remove the power adapter from electric outlet when the product is not in use for a long time.

9. RECHARGING BATTERIES (applicable for rechargeable version only)

- Turn off the headphone & retain the provided Ni-MH batteries in the headphone.
- Insert the headphone in to the recharge slot on the transmitter.
- Ensure the recharge contact points face the transmitter.
- When the contact points connect, the recharge indicator will illuminate.
- The preset recharge cycle will charge the provided Ni-Mh batteries for 8-12 hours & will cease when the charge cycle is complete.
- The recharge indicator will go off when the recharge cycle is complete.

10. TROUBLE SHOOTING

| PROBLEM | TRY THIS |
|--|--|
| CANNOT CONNECT TRANSMITTER TO TV BECAUSE TV HAS NO HEADPHONE OUTLET OR AUDIO OUT | Connect the transmitter to the AUDIO OUT or LINE OUT or AUX OUT on the audio sources |
| POOR SOUND QUALITY / DISTORTION / INTERFERENCE | You may be out of operating range & too far from the transmitter. Move closer to the transmitter until the AUTOSCAN indicator can lock on to the transmitter. Your Batteries may be running weak & require replacement. Audio signal to the transmitter from the audio source is too loud. Reduce the volume setting on your audio source. |
| TRANSMITTER CANNOT POWER ON | Check the connections of the provided power adapter are connected correctly & securely. |
| HEADPHONE DOES NOT TURN ON | Batteries may be inserted to the incorrect polarity; Remove batteries & insert to the correct polarity. Battery power may be insufficient. Replace new battery |
| HEADPHONE HAS NO SOUND | The Volume control may be set at the lowest position. Increase the volume control to the desired level. Check power adapter connections on transmitter. Check audio connections on transmitter. Check if audio source is sending audio signal to the transmitter. |

| PROBLEM | TRY THIS |
|--------------|--|
| INTERFERENCE | Select another channel setting from the channel selector on the transmitter & press AUTOSCAN button to scan the new channel setting. |

11. TECHNICAL DATA

| | |
|-------------------------------|--|
| MAXIMUM RECEPTION RANGE | 100 METERS (300 FEET) |
| | IN IDEAL CONDITIONS WITHOUT OBSTACLES AND INTERFERENCES) |
| SIGNAL TO NOISE RATIO | 55 dB |
| FREQUENCY RESPONSE | 50Hz-18000Hz |
| TRANSMISSION FREQUENCY | 863-865MHz |
| TRANSMITTER Dimension (LxHxD) | 95mm x113 x 170mm |
| RECEIVER Dimension (LxHxD) | 205 x 175 x 75mm |
| POWER SUPPLY | DC12v 150Ma (central positive) |