

Easy Showwily

USER'S MANUAL



Table of contents

Part 1	<u>Product introduction</u>	<u>2</u>
Part 2	<u>Features</u>	<u>3</u>
Part 3	<u>Safety notes</u>	<u>4</u>
Part 4	<u>User's guide</u>	<u>5</u>
Part 5	<u>Operation notes</u>	<u>10</u>
Part 6	<u>Access Tool</u>	<u>12</u>
Part 7	<u>Trouble shooting</u>	<u>27</u>

Part 1 Product introduction

Overview

Power button:

- **Press and hold**
 1. Power on/off.
- **Temporarily press**
 1. Normal mode To cycle through the various information of Easy Showily.
 2. Setting mode To confirm the option of setting items and then back to normal mode.

Function button:

- **Press and hold**
 1. Normal mode To enter the setting mode.
- **Temporarily press**
 1. Normal mode To reset the accumulation of Kilometer and Counter.
 2. Setting mode To set and switch among each setting items.



LCD:

1. Normal mode Display information.
2. Setting mode Display setting items.

GPS Antenna Location

Track button:

- **Press and hold**
 1. Normal mode To set up a new track.
- **Temporarily press**
 1. Normal mode To mark a point in the current track.
 2. Setting mode To switch options of selected items.

Part 2 Features

Easy Showily is a Auto-show Track Logger with internal antenna.

u-blox ATR0625 used in its core is high-tech component and included function of auto-log record of journey. USB interface ensures easy linking with computer to read the log data or programming it any where without install any driver or software. The GPS acquisition status, the last record of time and position could all be stored in non-volatile memory. The Easy Showily not only has 16 GPS channels but also powered by 2*AAA alkaline battery, no need to charge. Furthermore, it is with very low power-consumption, you could use it by full power operation (record 1 point per second) for 15 hours continually. If shake mode is available, then the battery life will be longer.

- Easy Showily built-in u-blox GPS IC ATR0625.
- Maximum 16 channels can be acquisitioned quickly.
- Highest tracking sensitivity: -158 dBm
- Internal decode"SBAS" is used excluding the need for external hardware in receiving SBAS signal.
- Data-logging acts like the in-flight black box and can record of position, date and time as long as power source is maintained.
- For down-load of log-data and programming of Easy Showily, provided software tool "Win_Tool" can simplify usage.
- USB interface, not need to install any driver or software.
- System requirement: Windows XP® or Vista®.
- **Suggested Web Browser: Internet Explorer.**

Part 3 Safety notes

- GPS (Global Positioning System) is provided by the United States government. Its accuracy may vary depending on special conditions (area at war or if it is blocked). Any control by USA will affect this system and its accuracy.
- If installed on the transportation device, driver must not operate this while driving.
- GPS performance is affected when satellite coverage is degraded as near a high-rise building, in the tunnel or under a cover.
- Personal replacement of components and re-structuring of this is prohibited and may result in loss of legal usage.
- Operation of this device is strictly prohibited in highly explosive environment such as mining, in-flight or other unauthorized area against use of this.
- Avoid exposing this at places of high temperature and humidity.
- Return to original dealer immediately if it emits strange smell or fume.

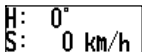
Part 4 User's guide

• Package:

- Easy Showily (Auto-show Track Logger)
- AAA alkaline battery *2
- USB extensive cable (15cm) *1
- User's manual.

• Easy Showily Operation:

- Press and hold "Power" button to power on it. The LCD will show up the main screen to confirm it is in the normal mode and GPS start acquisitioning.



H: 0°
S: 0 km/h

- After power on, press and hold "Power" button to turn the power off.
- "FIX" show up in the upper right of main screen indicates GPS acquisition is done. If not, the GPS acquisition fails.



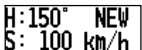
H: 150° FIX
S: 100 km/h

- In the normal mode, temporarily press "Track" button ("PUSH" will show up in the upper right of main screen) to mark a point in the current track.



H: 150° PUSH
S: 100 km/h

- In the normal mode, press and hold "Track" button ("NEW" will show up in the upper right of main screen) to re-start a new track.



H: 150° NEW
S: 100 km/h

- If the battery icon shows up in the button right of main screen, the power is low and needs to replace batteries for

avoiding worse GPS performance or un-working.

H: 150°	FIX
S: 100 km/h	

- In the normal mode, temporarily press “Power” button to change the information showed on LCD.

A Heading and speed information (after positioning)

H: 150°	FIX	H: 150°	FIX
S: 100 km/h		S: 100 mi/h	

Press “Function” button to change the information from speed to altitude.

H: 150°	FIX	H: 150°	FIX
A: 1500 m		A: 1500ft	

B Kilometer accumulated at present

DISTANCE	FIX	DISTANCE	FIX
120.5 km		120.5 mi	

C Counter accumulated at present

Press “Function” button to switch the following 3 accumulative value of counter.

TOTAL T.
14h50m35s

Total amount of counter.

counter.

MOVE T.
10h30m25s

Amount of motion

STOP T.
4h20m10s

Amount of non-motion counter.

D Average speed at present

AVG. SPD 8.2 km/h	AVG. SPD FIX 8.2 mi/h
----------------------	--------------------------

E latitude and longitude at present (after positioning) or last positioning (before positioning).

N 24.99689
E 121.48618

N 90.00000	the first time use or
E 0.00000	start)

F Local time at present: (Based on the zone set by user)

CLOCK 8:35:25

CLOCK 0:00:00	the first time use or cold start)
------------------	--------------------------------------

- In the normal mode, press and hold “Function” button will enter the setting mode and then the LCD will show up setting information.

1. LOG MODE Car

- In the setting mode, temporarily press “Power” button or no operation more than 15 second, it will back to normal mode.
- In the setting mode, temporarily press “Function” button to switch the following 3 setting categories. And the information showed on the second line is present and selected status.

1. LOG MODE Car

2. SHAKE MODE On

3. REC MEMORY 48.6%

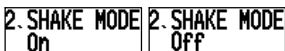
- In the setting mode, temporarily press “Track” button to switch setting value showed on the second line of the screen. The setting value would be confirmed when you skip to the other setting category or back to normal mode.

1. LOG Mode Setting:

Walk mode, Bicycle mode, Car mode, User define mode.



2. Shake mode (power saving) function.



3. Show the usage capacity of the record:



- If you want to reset the accumulative **value of Kilometer and counter, please enter the information B (kilometer accumulated) under normal mode**, and press “Function” button, then the “RESET?” will be showed up. At this moment, you just press “Function” button again, the kilometer accumulated and counter accumulated will reset simultaneously, otherwise, you just press “Power” button to switch to other information mode, or ignore it for 5 seconds, and then the “RESET” will be canceled.



- When shake mode is enable and stationary more than 5

minutes, its power will be turned off (that interval can be set by yourself), until the device with movement again. The Easy Showily will not auto power on/off while shake mode is disable. And if you turn it off manually while shake mode is enable, then the shake mode will be disabled simultaneously.

- When the USB is used as interface:
 - Turn the Easy Showily power off.
 - Connect Easy Showily to USB port of computer.
 - The built-in access tool (Win_Tool) will execute automatically, and then read the log data and transfer its format to Google Maps automatically.
 - User can transfer the log data to other format to suit other software or programming Easy Showily via Win_Tool.

- Battery Replacement:
 - Turn off the Easy Showily.
 - Take off the USB cover.
 - Take out the battery cover.
 - **Replace new batteries. (AAA 1.5v battery *2; Alkaline batteries are recommended.)**
 - **Be sure not to drop the battery.**
 - Put the battery cover back.
 - Put on the USB cover.

Cautions: Remove the batteries when you do not use the Easy Showily for a long time. Otherwise, it may result in leakage of the batteries.

Part 5 Operation notes

- Easy Showily will do self-check once it is powered. GPS start to work when LCD shows up the main screen. GPS automatically starts acquisition and auto-logs. If sky is clear overhead, it requires only 34 sec for acquisition. (If the data in its memory is still valid, it needs only 4~33 sec). After acquisition, Easy Showily starts record the track.
- For the first time if it is placed at the area well exposed to the satellite signal, this device requires approx 13 min (theoretically 12.5 min) to receive or update Almanac. Refer to trouble shooting guide when signal is not received well.
- If Easy Showily formatting the internal data is not correct, or if satellite data has been deleted, it takes longer time to position. But under the following conditions, it can take even longer time to get cold start.
 - If it is not in use for over 3 months (the almanac is old-dated).
 - If the last recorded position data is over 500 km.
- After positioning, Easy Showily begins to auto-log the following way.
 - Maximum data up to 94000 Points.
 - Recording in a circular way.
 - Auto-logging goes on without the need of any device.
 - Log-data can be read out by way of the "Win_Tool" included.
 - Data includes latitude, longitude, and altitude, time in year-month-date-hour-min-sec (UTC) and special point mark status.
 - After successful positioning, it wills auto-log GPS data into its internal memory chip. It recorded in a rotational order.

The earliest (oldest) data will be replaced by the latest (newest) one when memory space is full (when data exceeds 94000 maximum).

- The exact operating time would be a little different by the situation, environment condition and the type of battery.

Part 6 Access Tool

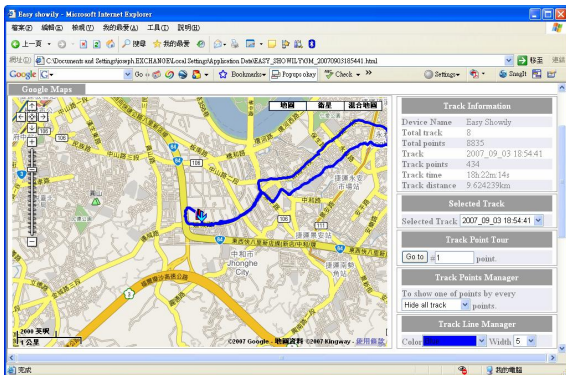
1. Connect Easy Showily with computer via USB interface. The access tool will execute automatically. If not please find the device in the "My Computer", and then click on its icon to execute it.



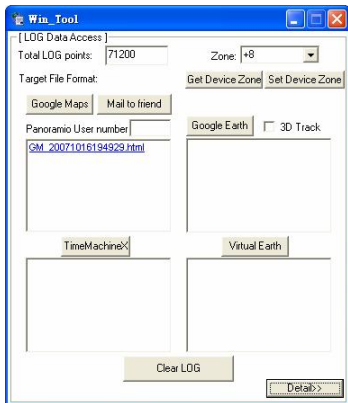
2. Key in the password and click “Log in”. If you don't enable password protect, this step will be omitted.



3. Win_Tool will read log data and transfer it to Google Maps format automatically, and execute it. User also can transfer the log data to another format, such as Google Earth or TimeMachineX formats.



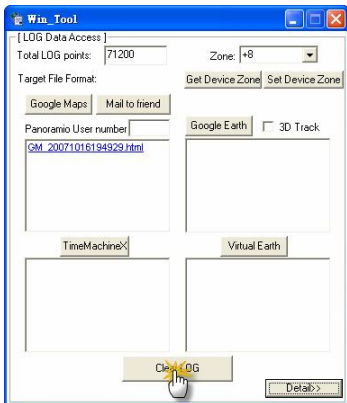
At the same time, Win_Tool will become minimum and hide in the system tray. Click the icon, Win_Tool will appear.



4. More Setting or function.

4.1 Clear all LOG Data:

Click "Clear LOG" to delete all LOG data in the device.



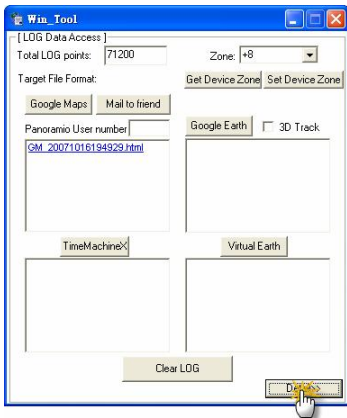
Note:

If select delete all LOG data, it will spend 30 sec to delete all LOG data while next time the device is power on. Also the LCD on the device will show the message as below, until delete process completely.

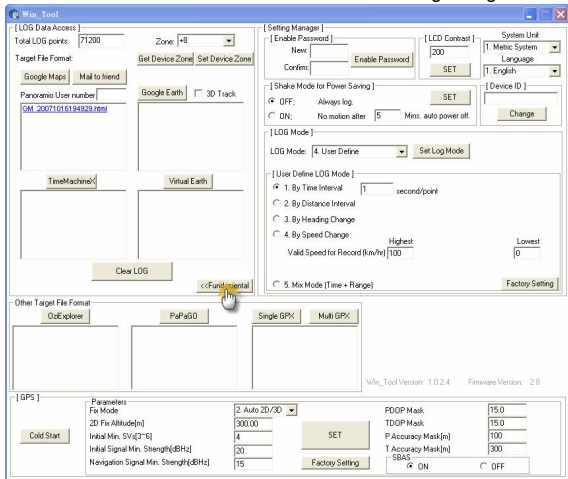
**CLEAR LOG
DATA NOW..**

4.2 Detail Setting:

Click “Detail>>” to open detail setting dialog.



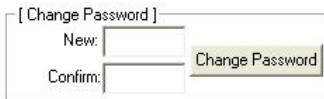
Click “<<Fundamental” back to fundamental setting dialog.



4.2.1 Enable password protection or change password:

User could enable password protection here, and the maximum of password is 10 characters or digits.

If you want to disable password protection, just keep blank in both “New” and “Confirm”, and then click “Change Password”.



4.2.2 GPS setting:

.G PS Cold Start: Click “Cold Start” in Win_Tool or just press and hold the function and track buttons simultaneously, and then power on the device, it will be re-started by cold start mode.

.G PS parameters setting:

- 1 Fix Mode: Select the GPS positioning mode.
- 2 2D Fix Altitude: Set the “fixed altitude” used when the fix mode is 2D.
- 3 Initial Min. SVs: Set how many GPS satellites used for the initial positioning.
- 4 Initial Signal Min Strength: Set the GPS satellite’s strength used for the initial positioning.
- 5 Navigation Signal Min Strength: Set the GPS satellite’s strength used after positioning.
- 6 P DOP Mask: When the value is bigger, the inaccuracy is greater, still you can position the GPS in the worse environment. The smaller value brings the better accuracy, but you may not be able to fix position in the worse environment.
- 7 TDOP Mask: When the value is bigger, the inaccuracy is greater, still you can position the GPS in the worse environment. The smaller value brings the better accuracy, but you may not be able to fix position in the worse environment.
- 8 P Accuracy Mask: Set the threshold of position accuracy.
- 9 T Accuracy Mask: Set the threshold of time accuracy.
- 10 SBAS: Enable/Disable SBAS function.

Parameters	
Fix Mode	2. Auto 2D/3D
2D Fix Altitude[m]	500.00
Initial Min. SVs[3~6]	4
Initial Signal Min. Strength[dBHz]	20
Navigation Signal Min. Strength[dBHz]	15
PDOP Mask	23.0
TDOP Mask	23.0
P Accuracy Mask[m]	100
T Accuracy Mask[m]	300
SBAS	<input checked="" type="checkbox"/> ON <input type="checkbox"/> OFF

Cold Start Set Factory Setting

4.2.3 Language selection of operation interface:

Support English, Chinese Traditional, Chinese Simplified.

Language

1. English ▼

4.2.4 Shake mode (power saving) setting:

To enable the Shake mode, the device will be power off when there is no movement after 5 minutes (default); and the device will be power on automatically when it moves.

To disable Shake mode, device will be never power off automatically. And if you turn it off manually while shake mode is enable, then the shake mode will be disabled simultaneously.

[Shake Mode for Power Saving]

<input checked="" type="radio"/> OFF;	Always log.		SET
<input type="radio"/> ON;	No motion after	5	Mins. auto power off.

4.2.5 LOG Mode Setting:

LOG mode supports “Walk mode”, “Bicycle mode”, “Car mode” and “User define mode”.

In user define mode, there is 5 preset saving intervals can be selected by slide switch, including Time, Range, Heading, Speed and Mix (Time & Range)

[LOG Mode]

LOG Mode: 4. User Define

[User Define LOG Mode]

1. By Time Interval second/point

2. By Range Interval

3. By Heading Change

4. By Speed Change

Valid Speed for Record (km/hr) Highest Lowest

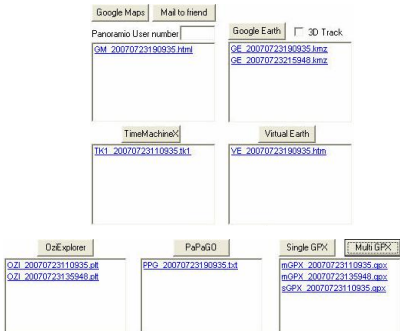
5. Mix Mode (Time + Range)

Note:

1. “Valid Speed for Record” means that if speed exceeds this range will not record any points.
2. “Factory Setting” means that recover all parameters to factory setting at user define log mode.

4.2.6 Transfer LOG data to another export format:

Easy Showily support multi translate formats, such as Google Maps, Google Earth, Virtual Earth, OziExplorer, PaPaGO, GPX format, and TimeMachineX format.



Note:

1. User could download TimeMachineX free software from the website <http://www.wintec.com.tw> to integrate photo to your trajectory.
2. In the export file list box, click the right key of mouse, it could copy or delete the export file.



4.2.7 Total LOG points

Total LOG points indicate how many points are stored in the device.

Total LOG points:

4.2.8 Change device ID:

The device ID could be changed by User.

[Device ID]

4.2.9 LCD Contrast:

Set the LCD Contrast; LCD Contrast depends on the temperature. The higher temperature is, the darker for contrast, in another word, the lower temperature is, the lighter for contrast.

Reference Value: 200 at 25 (77)

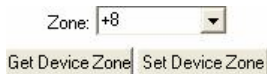
[LCD Contrast]

4.2.10 Zone:

The Zone value could be set to fit in with your trajectory.

The default value is the same as the PC you used. You could click "Get device Zone" to catch the zone value from the device (same as device), also you could adjust the Zone value by yourself and click "Set device Zone" to save the modification.

Note: The zone setting will affect the presentation of local present time on the LCD of device.



4.2.11 System Unit:

Set the system unit at the device; one for Metric unit, the other for Imperial unit.



4.2.12 Google Maps with Panoramio:

- . View all nearby public photos on the Panoramio of the selected track points.
 - .1 Keep the “Panoramio User ID” as blank.
 - .2 Click “Google Maps” button to convert LOG data to Google Maps format.
 - .3 Select a trajectory with Google Maps format and double click it to open.
 - .4 Just click any track point icon on the Google Maps.
 - .5 All nearby photos on the Panoramio of the selected track point will show up.



Google Maps

(Start)Point #1 Lat & Long: (24.9965417, 121.487865) Time: 2007-09-03T18:54:41 +8, Speed: 0 km/hr

Click Here

Track Information

Device Name	Easy Showly
Total track	8
Total points	8835
Track	2007_09_03 18:54:41
Track points	434
Track time	18h 22m 14s
Track distance	9.624239km

Selected Track

Selected Track: 2007_09_03 18:54:41

Track Point Tour

Go to: 1 point.

Track Points Manager

To show one of points by every

Hide all track: 5 points.

Track Line Manager

Color: Blue Width: 5

Panoramio

Upload photo to Panoramio

Home 世界地圖 Places 標籤 上傳 註冊 登入 討論區 部落格 說明

熱門 (77) 全部

Popular photos in Google Earth

前一圖 下一圖

尋找地點

用滑鼠來縮放 | 拖拉地圖

板橋市 Yonghe City 中和市 Zhonghe City

. View all nearby photos held by yourself on the Panoramio of the selected track points.

.1 Click "Upload photo to Panoramio" button, it will link to Panoramio Website, upload your photos and geotag those photo by the geographic data of your trajectory.

PS. Before you upload the photos, please register and login Panoramio at first.

Google Maps

(Start)Point #1 Lat & Long: 24.9965417, 121.487865 Time: 2007-09-03T18:54:41+8, Speed: 0 km/h

Click Here

Get position coordinates

Track Information

Device Name	Easy Showly
Total track	8
Total points	8835
Track	2007_09_03 18:54:41
Track points	434
Track time	18h 22m 14s
Track distance	9.624239km

Selected Track

Selected Track: 2007_09_03 18:54:41

Track Point Tour

Go to: #1 point.

Track Points Manager

To show one of points by every Hide all track points.

Track Line Manager

Color: [Blue] Width: 5

Panoramio

Upload photo to Panoramio

首頁 世界 Places 標籤 上傳 註冊 登入 討論區 部落格 說明

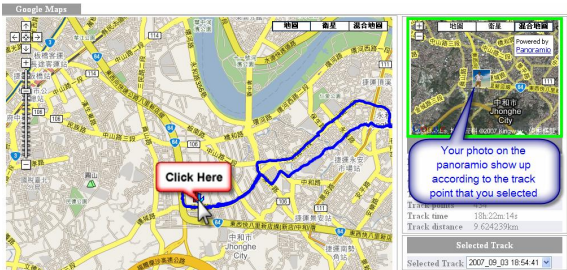
.2 Back to Win_Tool and key in your Panoramio user number (you can find that in the url of your Panoramio personal page. Ex: <http://www.panoramio.com/user/776586> link of "Panoramio User number").

.3 Click "Google Maps" button to convert LOG data into Google Maps format with your Panoramio user number.

.4 Select a trajectory with Google Maps format and double click it to open.

.5 Just click any track point icon on the Google Maps

.6 All nearby your own photos on the Panoramio of the selected track point will show up.



- . Share your Google Maps format trajectory with your friend.
 - .1 Copy and e-mail it to your friend via your mail client such as outlook.
 - .2 Or click the button of “Mail to friend” send it out.



Part 7 Trouble shooting

- If the vehicle enters the tunnel. The GPS signal transmits linearly down to earth and its signal is blocked out in this situation.
- GPS satellite coverage gets poor because of high-rise building or thick forest. Even though Easy Showily can receive reflected weak GPS signal, the data might be less accurate.
- The sun shade in the vehicle can partially block out GPS signal and effect good reception. The GPS satellite is under control of USA and the accuracy might vary depending on some special purpose (especially when manipulated by USA).
- After successful positioning of Easy Showily, if it is moved to another area of 500 km away it cannot be easily re-positioned. This is because the firstly recorded data (position, time and number of satellites acquisitioned) is different from the new area. It will need longer time for re-positioning.
- **Please replaces new batteries when the icon of low battery is showed up, otherwise the WPL-1000 will stop recording the track or record with unqualified performance.**
- Avoid placing 2 GPS devices too close during positioning.
- If the Easy Showily works abnormally because of wrong procedure, then please reset it by taking off the battery. It will have factory default without effecting pre-set program. At the factory default, GPS reception begins in a warm start mode and fix position may take longer time.
- When the Auto-Run function is not working, please refer to MSDN-Enabling And Disabling AutoRun:
<http://msdn2.microsoft.com/en-us/library/Aa969329.aspx>