

**Uniden<sup>®</sup>**

**GNS8361**  
**GNS8366**

**Car Navigation System**

Owner's Manual &  
Quick Start Guide

**OWNER'S MANUAL**



Uniden®

## WARNINGS & NOTIFICATIONS



*When used correctly, the GNS8361/8366 enhances your driving experience. The voice and map information in the GNS8361/8366 cannot be guaranteed accurate as road layout may change. Always follow the posted road signs and traffic laws.*



*The Global Positioning System is operated and maintained by the US Government. The US Government is completely responsible for the accuracy of the Global Positioning System.*



*Do not mount the GNS8361/8366 in a position which may obstruct the driver's view or prevent the safe operation of the vehicle.*



*The US Government reserves the right to make changes to the Global Positioning System in accordance with the Department of Defence civil GPS user policy and the Federal Radio navigation plan. These changes along with poor satellite geometry could cause inaccurate readings.*



*Do not mount the GNS8361/8366 in a position within an air bag field of deployment.*



*GPS signal reception can be affected by the location of satellites, tall buildings, tunnels, bridges, etc. If the GNS8361/8366 is not receiving a signal, you will need to change your location until a signal is received.*

# Quick Start Guide

## 1 2 3 Start Here



Software CD



Stylus-Pen



+12V to +24V Cigarette  
Lighter Power Cord



Carrying Case



SD Memory Card

### 1 BOX CONTENTS



*Please contact your place of purchase if any of the following items are missing.*

#### Box Contents



Main Unit



This Owners Manual



Suction-Cup Mount

#### Optional Accessories



AC Power Adaptor



SD Card Reader



External GPS Antenna

## 2

## INSTALLATION



*Please consider the following when choosing a mount location:*

- *Choose a location where the fixed antenna, when extended horizontally will have a clear view of the sky.*
- *Do not mount within any Airbag deployment areas.*
- *Do not mount where the driver's view will be obstructed or where safe operation of the vehicle may be obstructed.*



*Ensure the mount location;*

- *Allows room to raise the GPS antenna horizontally.*
- *Allows for the GNS8361/8366 to be slotted in and out of the mount stand.*
- *Allows for the tilt angle to avoid reflected sunlight.*



## 3

## MOUNTING

**Glass Mount Bracket**

1. Make sure the glass area you wish to attach the Glass Mount Bracket to is clean.
2. Double check that the final location does not impede the safe operation of the vehicle.
3. Loosen the turn screws. Hold the Glass Mount Bracket up to the intended position and adjust the angle between the suction mount and bracket arm. Tighten the turn screws. With the release lever loose firmly press the suction cup against the windscreen, push the release lever to secure suction. (fig 1).

**Attach main unit**

Secure unit to bracket. (fig 2).

1. Flip up the antenna located at the rear of the main unit.
2. Sit the main unit on the two locating pegs at the bottom of the mounting bracket.
3. Squeeze together the two grey release buttons on the mounting bracket and rock the main unit back onto the bracket.
4. Release the two grey buttons and check the unit is secure.

**Connect Power**

1. Insert DC plug of **Cigarette Lighter Lead** into the DC Power socket of your GNS8361/8366 and connect the other end to the +12V - 24V cigarette lighter socket.



*Ensure the cord does not interfere with safe vehicle operation*

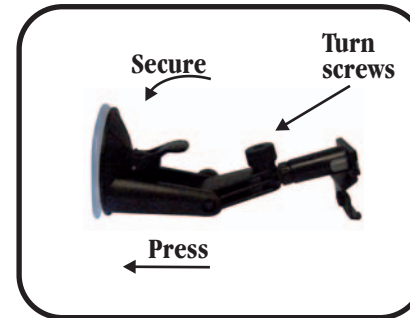


Fig 1: Line up glass mount to windscreen

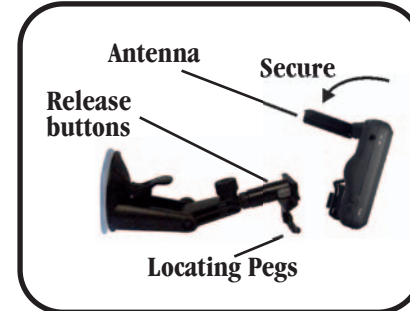



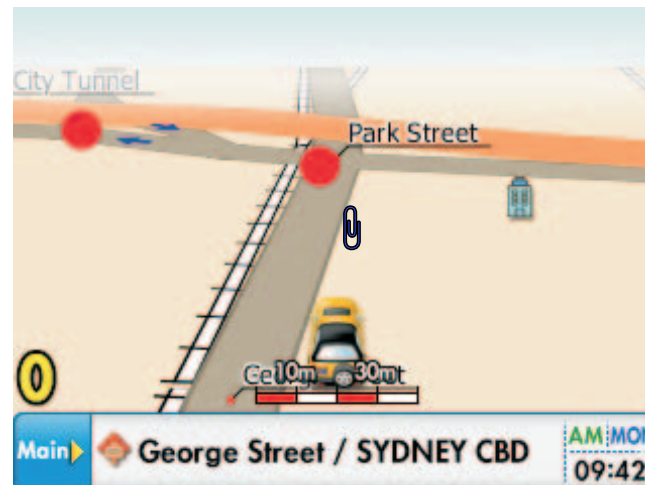
Fig 2: Secure unit to bracket

## 4 POWER ON SCREEN

Turn the ignition on and GNS8361/8366 will power on. The GNS8361/8366 is On when the buttons left and right of the screen are lit with a blue LED backlight. Press the POWER button at the left side of the GNS8361/8366 momentarily to turn power On or Off.

The screen may be turned on or off by pressing  (GNS8361 model only). When the GNS8361/8366 powers on for the first time you will be prompted to view A Brief Tour. Please take the opportunity to view the brief tour as this feature will not appear again whether you choose to view the brief tour or not.

This Quick Start Guide is now complete.



### **THIS OWNER'S MANUAL**

*The remainder of this OM describes the GNS8361/8366 operating functions and other (non navigation) applications which can be performed.*

### **NAVIGATION MANUAL**

*The GNS8361/8366 Navigation software is loaded onto the supplied SD card. A separate manual is supplied with instructions to use the GNS8361/8366 Navigation software.*

## CONTENTS

Contents.....	1
Features.....	1
Controls & Views.....	2
Using the Touchscreen.....	3
Care & Maintenance.....	3
Operation Flow Chart.....	4
Main Menu.....	4
Playing Music Files.....	5
Playing Movie Files.....	6
Viewing Pictures.....	7
Game.....	8
Settings.....	9
Built-In Battery Specification.....	11
Bluetooth (GNS8366 Model Only).....	12
Future Software Improvements.....	18
CD Contents.....	18
Troubleshooting.....	19
Warranty.....	20

## FEATURES

### Car Navigation

- Navigate to pre-programmed State/City locations
- Navigate to street address
- Navigate to over 500,000 pre-installed points of interest (POI)
- Mark often used destinations as My POI
- Dynamic voice and visual guidance: Constant route verification and re-calculation with turn by turn instructions
- Road Map

### Speed and Safety Warning System

- Receive audio and visual warnings when you approach:
  - Fixed Speed camera
  - Red Light camera
  - Moving speed alerts

### Other Great Features

- 3.5 inch High Definition Non reflective LCD Screen
- Touchscreen
- Intuitive technology
- Built in GPS antenna
- 400MHz processor SIRF III GPS
- Bluetooth capability for hands-free Mobile phone use (GNS8366 model only)

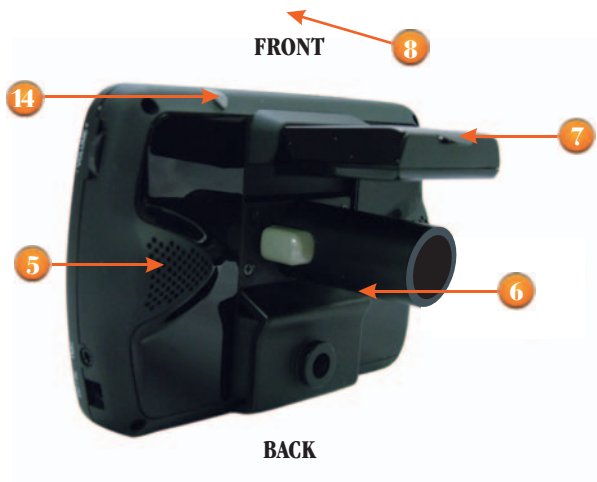
### Updateable Software\* for;

- Operation
- Map data

\* Yearly map updates are licensed from a third party and a license fee is required for future map updates. For the latest update information please visit the webpage for your GNS model at [www.uniden.com.au](http://www.uniden.com.au) (Australian model) or [www.uniden.co.nz](http://www.uniden.co.nz) (New Zealand model).




## CONTROLS & VIEWS



LEFT SIDE

RIGHT SIDE

- 1 Main Menu Button
- 2 Screen On/Off Button  
(Bluetooth Button  - for GNS8366 model only)
- 3&4 Map Zoom In/Out
- 5 Stereo Speaker
- 6 Mount Holder Bracket
- 7 GPS Antenna
- 8 Secure Digital Card Slot
- 9 Audio-Out Jack
- 10 GPS Antenna
- 11 Power On/Off Button
- 12 Volume Control
- 13 Power-Supply Jack
- 14 Stylus Pen

## USING THE TOUCHSCREEN

The GNS8361/8366 is designed to respond to touchscreen input. Momentarily touch the screen with the tip of your finger when making a selection (fig 3).

Avoid applying excessive pressure to the screen or holding a finger for more than a moment (fig 4).

You may also use the stylus pen which is located at the top right of the unit to touch the screen (fig 5).



*Do not use sharp objects which may scratch or damage the screen.*



Fig 3

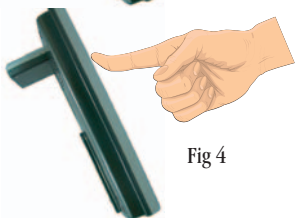


Fig 4



Fig 5

## CARE & MAINTENANCE

Please take the following steps to ensure your GNS8361/8366 is looked after.

- Always transport and store the GNS8361/8366 using the carry case.



- Keep the GNS8361/8366 free from dust by regularly cleaning the screen with an LCD cleaner.



Take measures to reduce the risk of theft by covering the unit or remove the unit from your dash when not in use.

- Do not leave unattended in direct sunlight for extended periods.



- Avoid any moisture contact.



## MAIN MENU

The Main Menu facility gives you access to additional application modes.  
Press **(M)** to access the Main Menu screen.

### NOTE

*Multitasking two applications in the Main Menu is available for the GNS8361 model only.*

*Multitasking is disabled for the GNS8366 to accommodate the Bluetooth facility. To access the Main Menu when running the Navigation software press **(M)** to go to the Navigation main screen and then close and exit the Navigation software.*



### Using SD Cards

- The supplied SD memory card has the map file stored with room for additional files. If the supplied SD memory card is short of capacity for new files do not delete the map file to increase capacity. Purchase another SD card then you can save more files. If the map file is deleted, the navigation function will not perform properly.
- Total number of files on SD card: Up to 9999 files for each application can be read. Note that performance may decrease if more than 200 files are read.

### Running more than one mode (GNS8361 model only)

To perform multitasking (for example, navigation plus audio playback).

- 1 Select an application in the main menu (Navi, Music...) to get on.
- 2 Press **(M)** to come back on main menu. The available applications will have coloured icons, those which are not available are in grey color.
- 3 Select an available application: applications are working simultaneously.


### Turning the screen off temporarily (GNS8361 model only)

This function is used to turn the LCD screen off temporarily without ending the current program.

- 1 Press **(P)** briefly; The LCD is turned off to prevent dazzle at night or to save power. The current program continues to be executed even though nothing appears on the screen, voice alerts and instructions are still heard. Press **(P)** again to display the screen.


## PLAYING MUSIC FILES

The GNS8361/8366 will play MP3 and wav music files (converted for Windows Mobile(WIN CE)) saved onto the SD memory card. If the supplied SD memory card is short of capacity do not delete the map file to increase capacity. Purchase another SD card then you can save more files.

The Music Screen with the last file played is displayed. If there is no SD memory card installed, a sample file is played. Touch the End Button  to end Music and return to the main menu.

If you press the main menu key, the music continues and you can choose other available applications.

### Repeat

Repeat All --> Play All --> Repeat 1 Track --> Repeat All ...  
Touch  to select the desired option

### Previous/Next Music File

#### Zoom -/+ :

Select the next music file while the last music file is being played or select the previous music file while the first music file is being played.



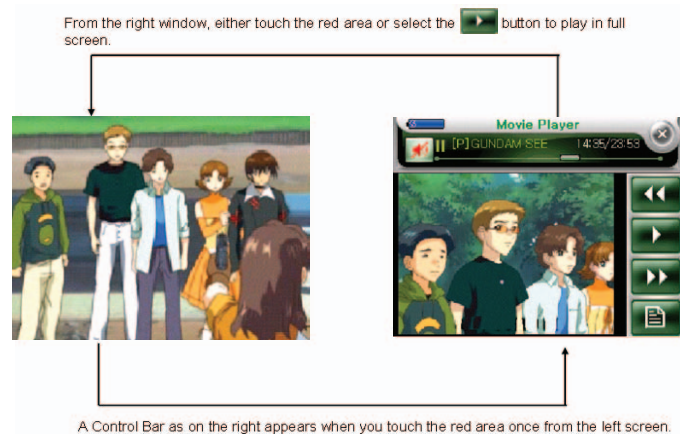
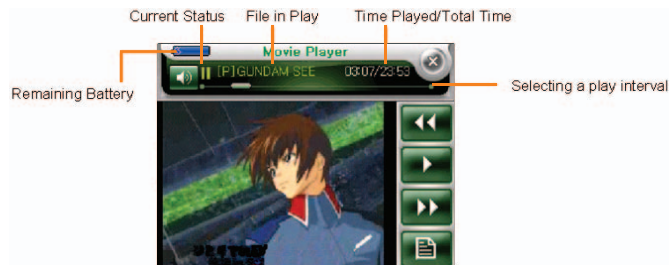
## PLAYING MOVIE FILES

When a movie file (avi file converted for Windows Mobile (WIN CE)) exists in the SD memory card that is inserted into the device, it automatically searches and shows both the file list and the movie start screen.

If the supplied SD memory card is short of capacity do not delete the map file to increase capacity. Purchase another SD card then you can save more files.

Full screen is optimized to the movie size of 340 X 240.

### Control Bar/Button

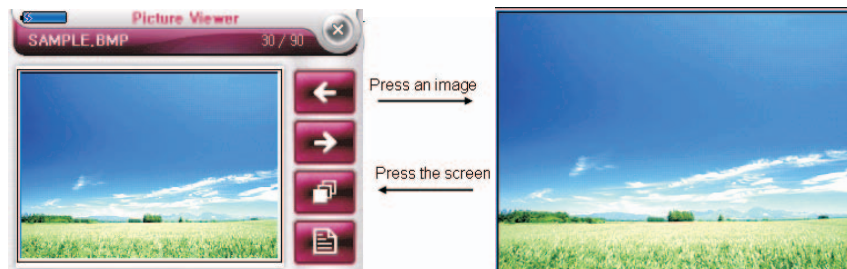
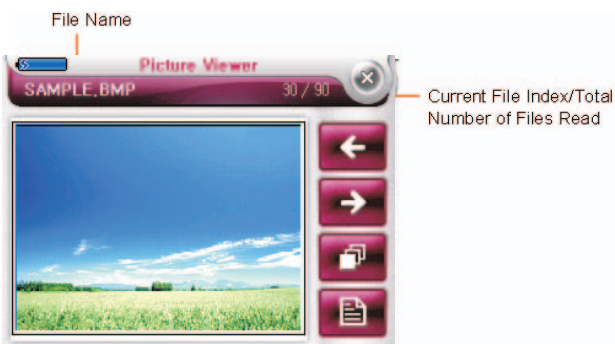


	Fast backward by 10 seconds / If this button is re-selected during the rewind, the movie is played from the last play position.
	Play/Pause If the play button is pushed, the movie is played from the last play position.
	Fast forward by 10 seconds / If this button is re-selected during the fast forward, the movie is played from the last play position.
	Switch to the play list screen
	Mute (by toggle)

## VIEWING PICTURES

To view an image file, the bmp, jpeg, gif or png file must be saved in a SD memory card. If the supplied SD memory card is short of capacity do not delete the map file to increase capacity. Purchase another SD card then you can save more files.

**For optimal performance view only images up to 1MB in size.**



Enlarge/Reduce

Arrow-shaped buttons (left, right, up and down) appear, enabling an image to be enlarged/reduced.

Slide Show

Images are displayed at three second intervals. Slide show occurs in full screen. If the screen is pressed during a slide show, the current image is displayed in the previous mode

## GAME

### PAIRS GAME

This is a simple pairs game where you pair 2 cards with the same picture from among 32 different picture cards.

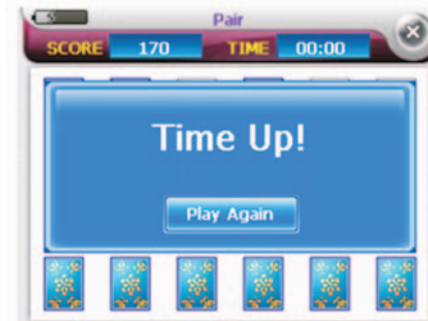
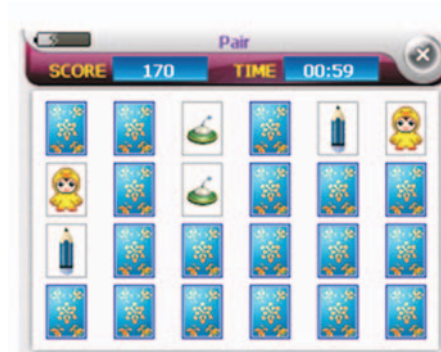
Once you start the game, the preview mode will display all the cards for 5 seconds before starting actual game. The initial card selected will be reversed and the game time will begin.

Once your game time is over, you can start new game by pressing the "New Game" button.

Score

- . Each single failure of a card pairing will deduct 10 points from your score.
- . Each single success of a card pairing will add 100 points to your score.

Once your game time is over, the below screen will be pop-up. You can start new game by pressing "Play again" button.



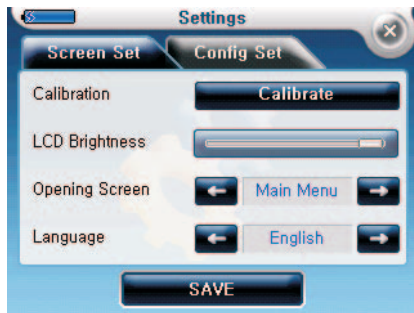
MODE



## SETTINGS

### Environment Settings

Settings are applied immediately. The screen setting tabs appear. When accessing the screen setting tab, the last setting status appears. If a screen with changes is exited without touching the 'Save' button, the change is canceled.






## Setting Options

	Submenu	Default	Description	Pop-up Sound	Doorbell/Electronic Sound/Ring Tone/None	Set the pop-up sound
Calibrate (Screen)	Settings button		Moves to the Calibrate screen.	Button Sound	Xylophone/Step Sound/Arrow Sound/None	Set the button sound
<b>LCD Brightness</b>	1~100	50	Adjusts the brightness of the LCD screen by using the adjustment bar. (If the power is turned off, the LCD cannot be adjusted.)	<b>Standard Time</b>	GMT+08:00 Beijing, Singapore GMT+09:00 Seoul, Tokyo GMT+10:00 Guam, Sydney GMT+12:00 Auckland GMT-10:00 Honolulu GMT-09:00 Anchorage GMT-08:00 Los Angeles GMT-07:00 Denver GMT-06:00 Dallas, Mexico City GMT-05:00 New York, Washington GMT-04:00 Caracas GMT-03:00 Buenos Aires GMT-01:00 Azores GMT+00:00 London, Lisbon GMT+01:00 Paris, Berlin GMT+02:00 Athens, Cairo GMT+03:00 Makkah, Moscow GMT+04:00 Abu Dhabi GMT+05:00 Islamabad GMT+06:00 Colombo, Dacca GMT+07:00 Bangkok, Hanoi	GMT-08:00 is displayed in the upper part. City Name is displayed in the lower part.
Opening Screen Setting	Main menu/Navigation/Music/Picture	Main Menu	Sets the start screen after turning the system power on.			
<b>Language</b>	Korean/English	Local Language	Sets the desired Local language.			

**BUILT IN BATTERY SPECIFICATION**

Battery Capacity		720mAh	
Nominal Voltage		3.7V	
Charging Voltage		4.2V	
Charging Time (Sleep Mode)		2.0 ~ 2.5hrs	
Charging Current (Sleep Mode)		500mAh	
Approximate Usage Time	Min. Brightness of Backlight	Navigation	55 min
		Playing Music	45 min
		Showing Movies	35 min
		Menu Screen	1.0hrs

## BLUETOOTH (GNS8366 Model Only)

The GNS8366 includes Bluetooth® connectivity. With its integrated microphone, the GNS8366 allows you to answer and make calls from the touch screen. Pressing the Bluetooth button  on the front of the GNS8366 launches the Bluetooth system.

### Settings

Tapping the **Settings** button opens the Settings Screen.

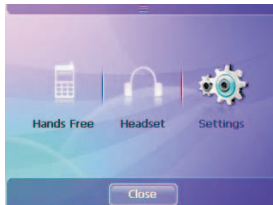


Ensure that Bluetooth is active and discoverable on your phone and tap the **Hands Free** button to set up your phone with the GNS8366



If you choose Add Device, you may have to set your phone to allow devices to find it.

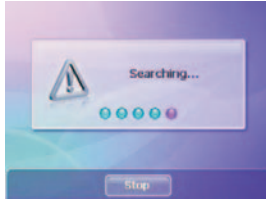
### Pairing your Phone with the GNS8366 as a Hands Free Device



### Using GNS8366 to Connect to Your Phone

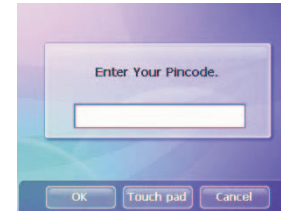
Tapping **Add Device** will cause the GNS8366 to search for available Bluetooth devices.

**NOTE:** During this process, please watch your phone screen for any additional response that the phone may require.



Tap **Touch pad** to open the on-screen key board and enter your PIN code. The default pin code is 0000. Tap **OK** to record your entry.

The GNS8366 will pair with your phone. You may need to enter the PIN code or perform other functions on your phone to complete the pairing. Please watch your phone screen during this process.

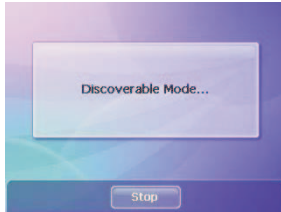


Select your phone from the list and tap **Connect** to connect the GNS8366 to your phone.



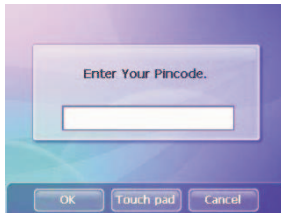
When connection is successful, you will be prompted to enter your PIN code.

### Using your Phone to Connect to GNS8366



Tapping Find Me will cause the GNS8366 to enter "discoverable mode," allowing other Bluetooth devices to connect to it.

You can now use your device to pair with the GNS8366. Once you enter the PIN number on your phone, the GNS8366 will ask that you verify the PIN.



Tap **Touch pad** to open the on-screen key board and enter your PIN code. The default pin code is 000. Tap **OK** to record your entry.

### Pairing your Phone with the GNS8366 as a Headset

You may pair your phone with the GNS8366 as a headset by tapping the **Headset** button from the Main Menu. This method of connecting the GNS8366 to your phone is useful only if there has been difficulty connecting the GNS8366 as a hands free device. When you pair the GNS8366 and your phone this way, the GNS8366 allows you to answer calls only. You cannot initiate calls using the GNS8366 in headset mode.

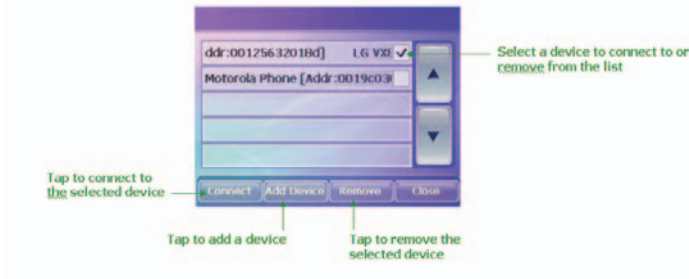
### Managing Bluetooth Devices

You may have multiple phones set up for connection with your GNS8366. You can add and remove phones from your list and disconnect and connect to different phones using the List Screen. If you have phones already paired to the GNS8366, but have none of them currently connected, the following screen appears when you select **Hands Free** from the Main Menu.



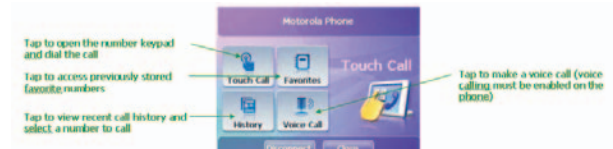
### Device List Screen

This screen allows you to connect to a device, add devices, and remove devices.



### Making a Bluetooth Call

Select the **Hands Free** button from the Bluetooth menu to place a call using a currently connected device.



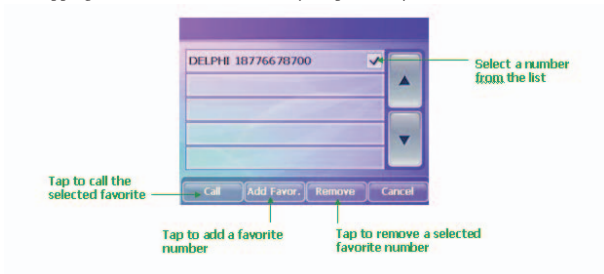
### Touch Call-Tapping Touch Call opens the keypad



Tap the keys for the number you wish to call and then tap **Call** to initiate the call.

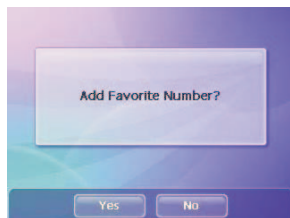
## Favorites

Tapping **Favorites** accesses a list of your previously stored favorite numbers



## Adding Favorites

If you have no Favorites on the Favorites list, the following screen is displayed.



Tap **Yes** to display the touch pad to add a Favorite. You can also add a favorite number by selecting **Add Favor.** from the Favorites list screen.



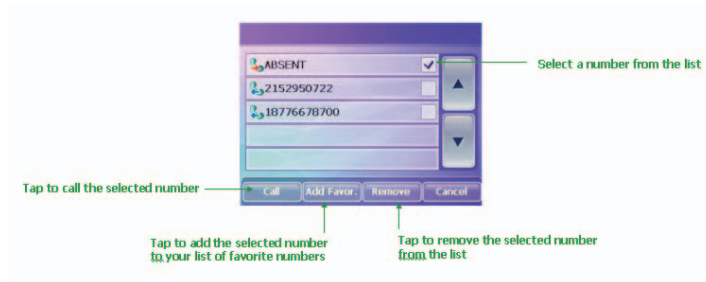
Enter the name of the Favorite and tap **OK**.



Enter the number of the Favorite and tap **OK**.

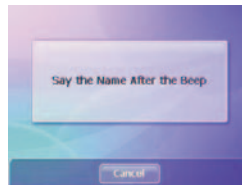
## History

Tapping **History** accesses a list of your previously called or received numbers.



## Voice Call

Tapping **Voice Call** allows you to make a call by speaking the name of a previously recorded voice call number on your phone.



**NOTE:** Voice calling must be set up on your phone to use this feature.



## FUTURE SOFTWARE IMPROVEMENTS

The supplied SD memory card can be connected, with use of an SD card reader (not supplied) to a PC for updating the navigation software or uploading media files.

The supplied CD disc contains a PDF copy of this owner's manual, the GNS8361/8366 Navigation manual and a back up copy of the GNS8361/8366 Navigation software.

### CD Contents:

1. User Guide
  - GNS8361/8366 Owner's Manual PDF
  - GNS8361/8366 Navigation manual PDF
2. GNS8361/8366 Navigation Program (MobileNavigator)
3. End User Licence Agreement

### Minimum PC Requirements

#### Windows 98/ME/XP/Vista

From time to time the operation software may be updated. Please visit our website for information on map releases and operation software updates.

For Australian model: [www.uniden.com.au](http://www.uniden.com.au)

For New Zealand model: [www.uniden.co.nz](http://www.uniden.co.nz)

## TROUBLESHOOTING

PROBLEM	SOLUTION
No Display	<p>Make sure power supply is +12V or +24V</p> <ul style="list-style-type: none"> <li>● Check power connection.</li> </ul>
Touchscreen not responding	<ul style="list-style-type: none"> <li>● If touchscreen not responding while driving then Safe Mode is on (see page 43).</li> <li>● Turn off power. Wait a moment and turn back on.</li> <li>● Clean LCD with LCD cleaner.</li> <li>● Make sure you are only momentarily touching screen.</li> </ul>
No Sound	<ul style="list-style-type: none"> <li>● Check volume.</li> </ul>
Searching For Satellites' still showing.	<ul style="list-style-type: none"> <li>● Make sure GPS antenna is raised to a horizontal position.</li> <li>● Make sure the unit has a clear view of the sky.</li> </ul>

### PROBLEM

The unit powers on but does not boot up.

### SOLUTION

- Check the power connection.
- If unit has been exposed to hot temperatures for long periods turn off for a few minutes to cool down.

## WARRANTY

### UNIDEN GNS8361 and GNS8366 CAR NAVIGATION Limited One Year Warranty



*Please keep your sales docket as it provides evidence of warranty.*

**Important:** Evidence of original purchase is required for warranty service.

**Warrantor:** Uniden Australia Pty Limited A.B.N. 58 001 865 498  
Uniden New Zealand Limited

**Warranty is only valid in the original country of purchase.**

**ELEMENT OF WARRANTY:** Uniden warrants to the original retail owner for the duration of this warranty, its GNS8361 and GNS8366 (herein after referred to as the Product), to be free from defects in materials and craftsmanship with only the limitations or exclusions set out below.

**WARRANTY DURATION:** This warranty to the original retail owner only, shall terminate and be of no further effect ONE (1) year after the date of original retail sale. This warranty will be deemed invalid if the product is;

- (A) Damaged or not maintained as reasonable and necessary,
- (B) Modified, altered or used as part of any conversion kits, subassemblies, or any configurations not sold by Uniden,
- (C) Improperly installed,
- (D) Repaired by someone other than an authorized Uniden Repair Agent for a defect or malfunction covered by this warranty,
- (E) Used in conjunction with any equipment or parts or as part of a system not manufactured by Uniden, or

(F) Where the Serial Number label of the product has been removed or damaged beyond recognition.  
Warranty only valid in the country of original retail/sale.

**PARTS COVERED:** This warranty covers for one (1) year, the Product and included accessories.

**STATEMENT OF REMEDY:** In the event that the Product does not conform to this warranty at any time while this warranty is in effect, the warrantor at its discretion, will repair the defect or replace the Product and return it to you without charge for parts or service. This warranty does not provide for reimbursement or payment of incidental or consequential damages.

This EXPRESS WARRANTY is in addition to and does not in any way affect your rights under the TRADE PRACTICES ACT 1974 (Cth) (Australia) or the CONSUMER GUARANTEES ACT (New Zealand).

**PROCEDURE FOR OBTAINING PERFORMANCE OR WARRANTY:** In the event that the product does not conform to this warranty, the Product should be shipped or delivered, freight pre-paid, with evidence of original purchase (e.g. a copy of the sales docket), to the warrantor at:

**UNIDEN AUSTRALIA PTY LIMITED**

Service Division  
345 Princes Highway,  
Rockdale, NSW 2216  
Fax (02) 9599 3278  
[www.uniden.com.au](http://www.uniden.com.au)

**UNIDEN NEW ZEALAND LIMITED**

Service Division  
150 Harris Road,  
East Tamaki, Auckland  
Fax (09) 274 4253  
[www.uniden.co.nz](http://www.uniden.co.nz)

**THANK YOU FOR BUYING A UNIDEN PRODUCT.**

**Uniden<sup>®</sup>**

© 2008 Uniden Australia Pty Limited. Uniden New Zealand Ltd. Printed in China

**Uniden®**

**Navigation Manual for  
GNS 8361 and GNS 8366  
Car Navigation System**

**NAVIGATION MANUAL**

Uniden®

Navigation Software

Uniden®

[www.uniden.com.au](http://www.uniden.com.au), [www.uniden.co.nz](http://www.uniden.co.nz)

1



# Navigation Software User's Manual

## Table of Contents

Table of Contents	3
Warnings and Notifications	5
Basic Functions	6
Starting the Navigation System	6
Ending the Navigation System	6
Viewing a Brief Tour	7
Basic Screen	10
Main Menu Bar	11
FIND	12
Address	13
Intersection	16
POI(POI)	19
MY POI	20
Adding MY POI	21
Recent Destination	23
Coordinates	24
ROUTE	25
When no destination is not specified (Edit Route)	26
When a destination is specified	27
Driving Simulation Window	29



<b>MENU</b>	<b>30</b>
Manage Track Logs	31
Manage Safeties	32
Registering the Safety Information	33
Manage Avoidance	35
Registering Avoidance Points	36
TRIP Computer	37
GPS Information	38
About	39
<b>SETTINGS</b>	<b>40</b>
Route Settings	41
UI Settings	42
Safety Settings	43
Map Settings	44
Volume Settings	45
Initialise	46

## Warnings and Notifications

Before using the Navigation software please read carefully the owner's manual for the correct installation of the GNS8361/ GNS8366 car navigation unit.



Do not attempt to change the Navigation settings while driving. Park the vehicle at a safe place before making changes to the Navigation settings. For your safety the Safe Mode setting (page 43) is default ON which prevents changes from the touchscreen while the car is moving.



Road layouts change and the voice guidance and the route on the map may differ from the actual road layout. Drive safely, observing actual road layout and traffic signals.



If the Navigation software guides you to a place where it is difficult to travel because of poor road conditions, use another road to travel safely. The Navigation software will automatically recalculate the route if a different road is followed.

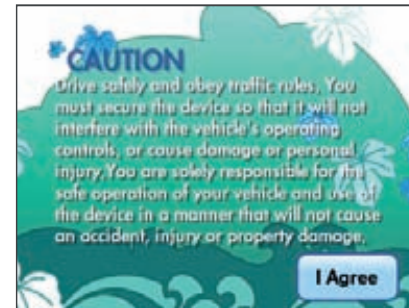


The Navigation software displays the moving speed as a navigation reference only. Always refer to the car's speedometer for final guidance.

## Basic Functions

### Starting the Navigation Software

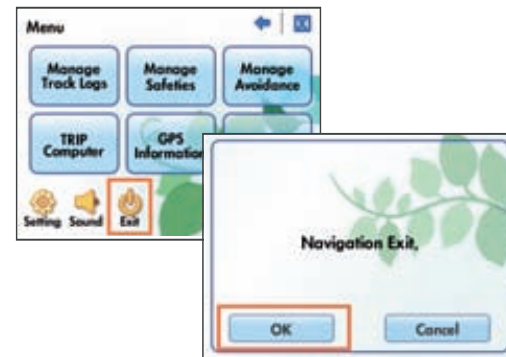
When you turn on the GNS8361/GNS8366 the Navigation Software starts and the CAUTION screen appears with the start sound.



### Ending the Navigation Software

To exit the navigation system:

Touch [Main] from the basic screen, and then touch [MENU], then [EXIT], then [OK] in turn.

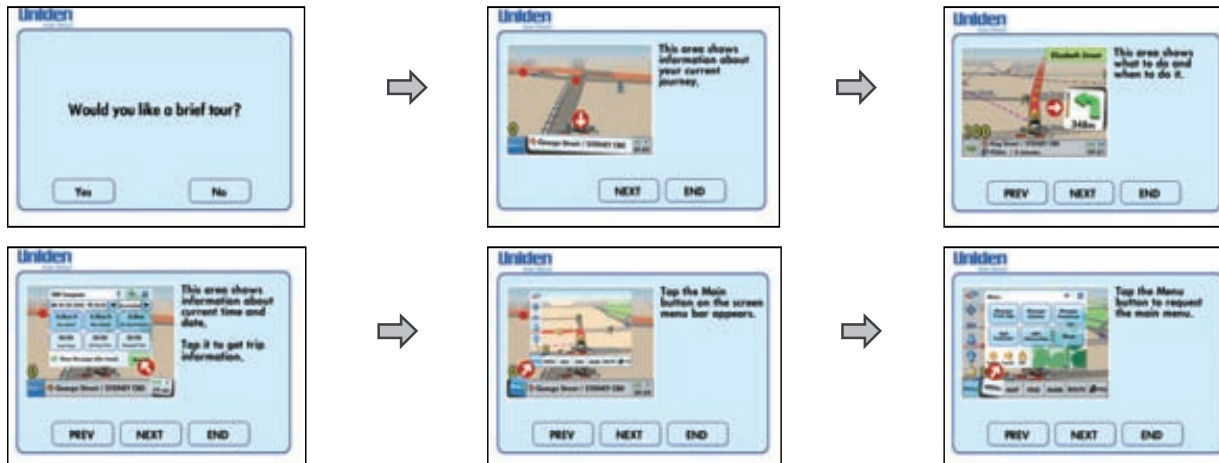


### Viewing A Brief Tour

When the navigation software initially starts, “Would you like a brief tour?” appears. Touch [Yes] to start the tour. Touch [Next] to show the next display.

The brief tour guides you through the basic menu structure and usage for the navigation software which are also covered in this navigation manual. To end the brief tour, touch [End].

The displays for the brief tour are as follows:





When the brief tour finishes, touch [End]. The Caution screen then displays. Please take the time to read and understand the caution fully, then touch [I Agree].

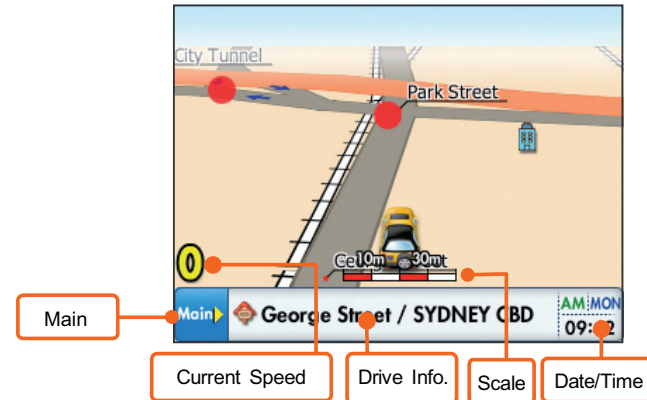
**Note :** The [Brief Tour] is seen only when the navigation software starts initially. After that time, only the Caution screen is displayed for future start up. The Caution must be accepted by touching [I Agree] to enter into the navigation software.

### Basic Screen

**Note:**

For the initial power up it may take up to 15 minutes to secure satellite information. When satellite data has been retrieved 'Searching for Satellites' will disappear.

The basic screen indicators and icons are described below and on the next page.

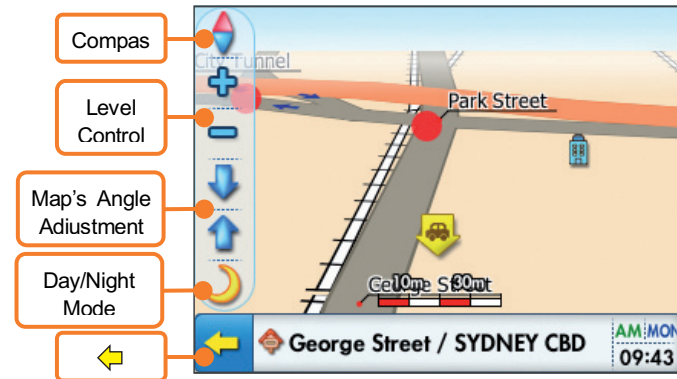


Name	Function
Current speed	Displays the speed of the car. This icon has no touch screen function.
Drive Info.	Displays information on the current road and location. This icon has no touch screen function.
Scale Bar	Displays the scale of the current map level view. This icon has no touch screen function.
Date/Time	Displays the current time and toggles between weekday and day of the month. Touch to display the Trip Computer screen.
Main	Touch to display or hide the main menu bar at the bottom of the screen and the side bar icons.

## Basic Screen (Continued)

Touch anywhere on the map to show the side bar icons ([Main] icon will change to [←]).

Touch the screen icon to action the functions described below.



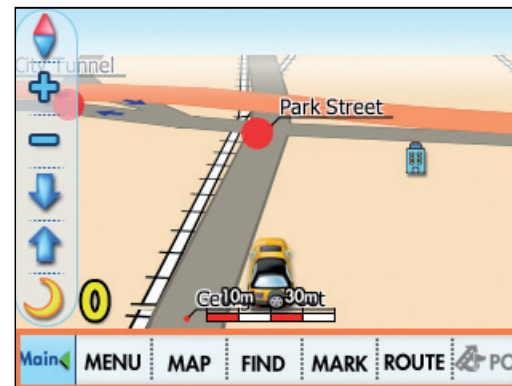
Name	Function
Compass	The red point indicates North. Touch to change the map between North-Up view and Heading-Up view.
Level Control	Touch to scale the map screen level (size).
Map's Angle Adjustment	Touch to adjust the angle of the 3D map view.
Day/Night Mode	Selects Day/Night mode.
←	Touch to go back to [Main] icon.

### Main Menu Bar

Use the main menu bar to select the navigation feature or setting you require.

Touch [Main] in the Basic screen to reveal the main menu bar at the bottom of the screen.

Touch the name to action the functions described below.

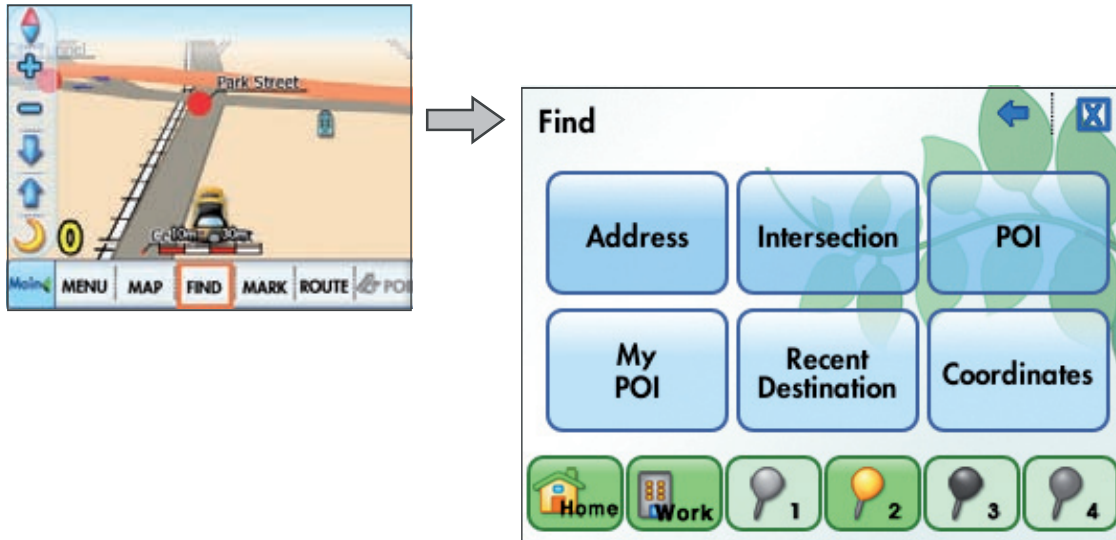


Name	Function	Name	Function
Main	Display or hide the main menu bar and side bar icons.	MENU	Displays the Menu screen.
MAP	Sets the centre of the map screen as the route point and reveals the map menu bar to register the position.	FIND	Displays the Find screen to find a route (address, intersection, recent destination, etc.).
MARK	Registers the centre of the map screen (also the current location of the vehicle) as a marked point and displays the My POI Addition screen to manage the new marked point.	ROUTE	If a destination is specified, displays the Route Search screen. If there is no destination, displays the Edit route screen.
POI	Is activated only when a route is specified. Displays surrounding POI such as petrol stations and parking lots along the route.		



## FIND

Use Find to locate a place or destination and plan a route. Touch [Main] on the Basic screen then touch [FIND] in the main menu bar.



**Note:**

- [Home], [Work], [1~4]: These quick access destinations are saved through the My POI feature (page 21). Touch to start the route guidance from the current location to my Home, my Work or the frequently visited 1~4.
- [←]: Touch to return to the previous screen.
- [✕]: Touch to return to the Basic screen.

### Address

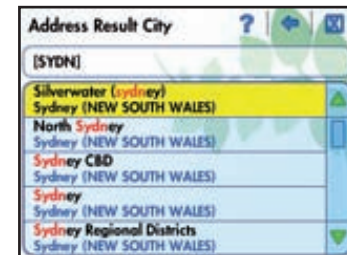
Find an address as follows:

1. Touch [Address] on the Find screen.
2. Enter a city name and then touch [Done]. The number of search results is displayed on the top of the screen.

**Note:**

- **[KEYS]**: Toggles the key layout between alpha, qwerty and numbers.
- **[CITY SEARCH]**: Touch to skip city search and search address. Address search will then include addresses from all cities.

When only few results exist, the search results are displayed automatically even though the name entered is not complete.



## Navigation Software

4. Enter a desired street name. When only a few results exist, the search results are displayed automatically even though the name entered is not complete.

**Note:**

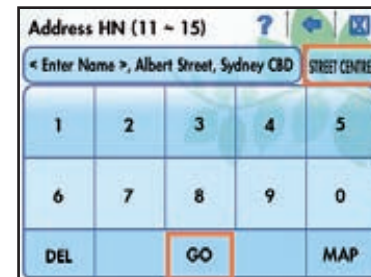
**[CITY CENTRE]:** Display the urban centre on the map window.

5. Select a desired street on the Address Result Street screen. If you cannot find the street you want, touch [←] to go back to the previous displays and enter the city name or street name again.

6. The house number range is displayed at the top of the Address HN screen. Enter the house number and then touch [GO].

**Note :**

**[STREET CENTRE]:** Display the street center on the map screen.



7. The address location is shown on the map screen.

Touch [GO] to begin route guidance from your current location.

Or, you can set the location as the starting point or as a via, destination, mark or avoidance, by using the menu bar at the bottom of the map screen.

**Note :**

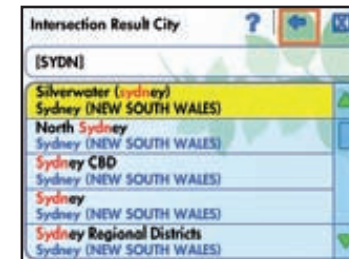
- **[START]**: Set the searched address as a start point.
- **[VIA]**: Set the searched address as a via-point.
- **[DEST]**: Set the searched address as a destination.
- **[GO]**: Start the route guidance with searched address as the destination.
- **[MARK]**: Register the searched point as a frequently visiting place or as safety information.
- **[AVOID]**: Set as Avoidance.



## Intersection

Find the intersection of two streets as follows:


1. Touch [Intersection] on the Find window.
2. Enter a city name and then touch [Done]. When only a few results exist, the search results are displayed automatically even though the name entered is not complete.
3. Touch the desired city listed on the Intersection Result City screen. If you cannot find the city you want, touch [←] and then enter the city name again.



- Enter a desired street name. When only few results exist, the search results are displayed automatically even though the name entered is not complete.

**Note :**

**[CITY CENTRE]:** Display the urban centre on the map window.

- Touch the desired street listed on the Intersection Result Street screen. If you cannot find the street you want, touch  and then enter the street name again.

- Touch the intersection your want from the listed streets.



## 7. The intersection location is shown on the map screen.

Touch [GO] to begin route guidance from your current location.

Or, you can set the location as the starting point or as a via, destination, mark or avoidance, by using the menu bar at the bottom of the map screen.

### Note :

- **[START]**: Set the searched intersection as a start point.
- **[VIA]**: Set the searched intersection as a via-point.
- **[DEST]**: Set the searched intersection as a destination.
- **[GO]**: Start the route guidance with searched intersection as the destination.
- **[MARK]**: Register the searched intersection as a frequently visiting place or as safety information.
- **[AVOID]**: Set as Avoidance.



### POI (Point of Interest)

Find a POI as follows:

1. Touch [POI] on the Find screen.
2. Select a category and/or sub-category and search a POI destination then touch [GO].

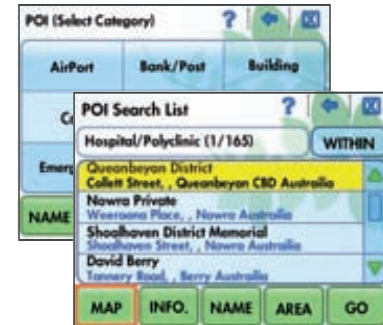
#### Note :

- **[MAP]:** Display the searched POI on the map screen.
  - **[INFO]:** Check information on address and phone number for the searched POI.
  - **[NAME]:** Find POI with a name search.
  - **[ADDRESS]:** Find POI with an address search.
  - **[GO]:** Start the route guidance with searched POI as the destination.
3. If you touch [MAP] to view the POI location on the map screen you can then set it as the starting point, via, destination, mark or avoidance by using the menu bar at the bottom of the screen.

#### Note :

- **[START]:** Set the searched POI as a start point.
- **[VIA]:** Set the searched POI as a via-point.
- **[DEST]:** Set the searched POI as a destination.
- **[GO]:** Start the route guidance with searched POI as the destination.
- **[MARK]:** Register the searched POI as a frequently visiting place or as safety information.
- **[AVOID]:** Set as an Avoidance location to be avoided during a route.

[www.uniden.com.au](http://www.uniden.com.au), [www.uniden.co.nz](http://www.uniden.co.nz)





## MY POI

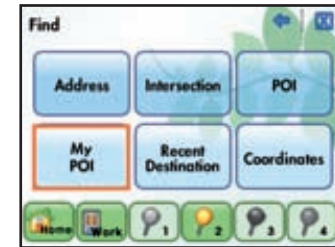
Find a destination from MY POI as follows:

You can check and manage all points that you have saved as MY POI.

1. Touch [MY POI] on the Find screen.
  
2. Manage the MY POI information or start a route to selected MY POI.  
Home, Work, POI 1, POI 2, POI 3 and POI 4 are fixed name MY POI which cannot be modified but can be stored over or deleted and stored again. All other My POIs can be modified.

### Note :

- **[Home]**: Start the route guidance from the current position to your Home.
- **[Work]**: Start the route guidance from the current position to your Work.
- **[1~4]**: Start the route guidance to the points saved as frequently-visited MY POI.
- **[MAP]**: Display a searched MY POI on the map screen.
- **[GO]**: Start the route guidance with the selected MY POI as the destination.
- **[MODIFY]**: Edit MY POI.
- **[DELETE]**: Delete MY POI.



### Adding MY POI

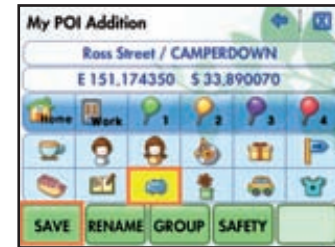
Frequently visited places can be saved as a MY POI. You can then set a destination easily from the MY POI list.

To add a MY POI, search a location first or select a location after moving on the Map screen. Then touch [Main].

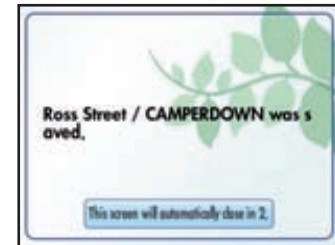
1. Touch [Mark] on the Main menu bar.
2. Touch [Group].
3. Select a group to be added to MY POI and then touch [OK].



4. Select an icon to be assigned to the new MY POI and touch [SAVE].



5. The registration of the new MY POI is completed.



**Note:**

The POIs registered to HOME, WORK, POI 1, POI 2, POI 3 and POI 4 can be selected at the bottom of the Find screen.

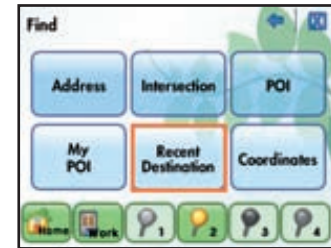
### Recent Destination

Find a recent destination to set as a route as follows:

1. Touch [Recent Destination] on the Find screen.
2. Select a recent destination and then start the route to this destination.

**Note :**

- **[MAP]:** Display a recent destination on the map screen.
- **[GO]:** Start the route guidance to the selected recent destination.
- **[DELETE]:** Delete the recent destination.



## Coordinates

Find a destination with coordinates as follows:

1. Touch [Coordinates] on the Find screen.
2. Enter the coordinates for latitude and longitude and then touch [GO].

**Note :**

- **[Longitude]:** Select longitude
- **[Latitude]:** Select latitude
- **[MAP]:** Display the coordinates position on the map screen.
- **[GO]:** Start the route guidance to the entered coordinates.
- **[DELETE]:** Delete the entered coordinate data one character at a time.
- **[CLEAR]:** Delete all coordinates entered.

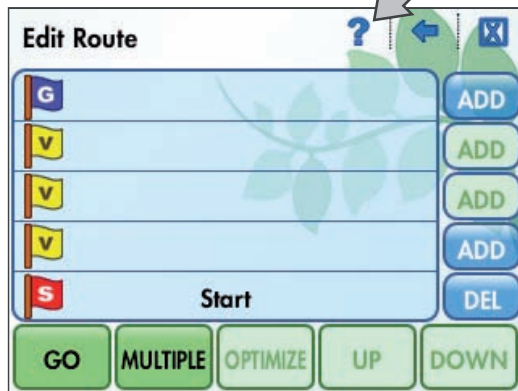


### ROUTE

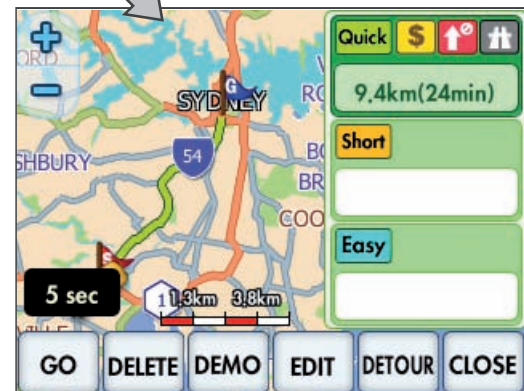
The Route and route guidance is the primary feature of the navigation software. Touch [Main] and then [Route] on the basic screen, and a route screen will display. The route screen displayed depends on whether or not a destination is currently set.



No Destination Setting



Destination Setting



## When no destination is specified (Edit Route)

When no destination is specified, the route can be created as follows:

1. Touch the first [ADD] on the Edit Route screen.
2. Specify your route (start point, via points and destination point)
3. If the route setting is completed, select the [GO] button to start the route guidance.

### Note :

- **[GO]**: Start the route guidance according to the specified route.
- **[MULTIPLE]**: Specify the route search options differently for each section of [Start Point - Via Point] and [Via Point - Destination].
- **[OPTIMIZE]**: Optimize the specified route.
- **[UP]**: Move a via-point to the previous stage.
- **[DONE]**: Move a via-point to the next stage.



### When a destination is specified

When a destination is specified, the configuration of the route search screen is as follows:

1. Check the overall route through a mini map.

#### Note :

- Quickest: Search the quickest route and display its distance and estimated time.
- Shortest: Search the shortest route and display its distance and estimated time.
- Easiest: Search the easiest route and display its distance and estimated time.
- **[GO]**: Start the route guidance according to the specified route.
- **[DELETE]**: Delete all routes specified.
- **[DEMO]**: Start a simulation of the specified route guidance.
- **[EDIT]**: Edit a route.
- **[DETOUR]**: Avoid a turn or road.
- **[CLOSE]**: Close the route search screen and display a map screen.

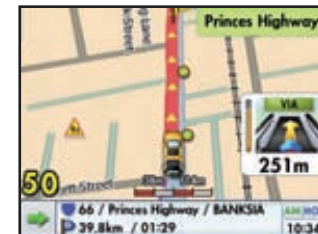
2. To avoid a turn or road, touch [DETOUR].





## Navigation Software

3. For a guidance point you want to avoid, touch [Next Turn].  
If you select a guidance point to be avoided and then touch [DETOUR], the route is re-searched, excluding the corresponding point.
  
4. Touch [Road] to select major roads to be avoided.  
If you select a road to be avoided and then press [DETOUR], the route is re-searched, excluding the corresponding road.
  
5. When the route setting is completed, touch [GO] to start the route guidance.





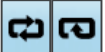
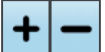
### Driving Simulation Screen


If you set a destination and then touch [DEMO] on the Route Search screen, you can check the intended route with a simulation.


The configuration for the Simulation screen is as follows:

Touch the icon to action the function described below.



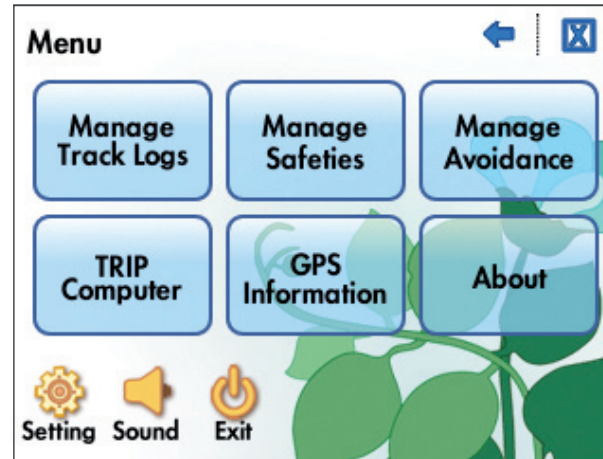
-  Display or Hide the Simulation Controls.
-  Pause or restart the simulation.
-  Continuous repeat or repeat once.
-  Increase or reduce the simulation speed. (50km/h steps)

-  Displays the simulation progress status. Touch along the status bar to skip to that progress point.

-  End and exit the simulation.

## MENU

Touch [Main] then [Menu] on the basic screen to display the [Menu] screen.



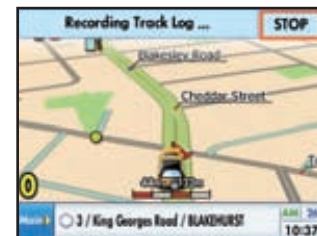
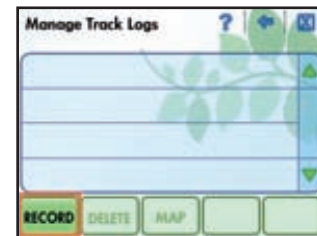
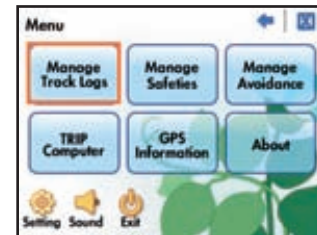
### Manage Track Logs

Record and manage track logs with this feature. A track log is a recording of your travel (and does not need to be within a programmed route). To start recording a Track Log:

1. Touch [Manage Track Logs] on the Menu screen.
2. Touch [Record] on the Manage Track Logs screen. Track log is enabled and "Recording Track Log..." will show in the basic screen.
3. To end Recording Track Log from the basic screen touch [Stop]. You can then enter a name for the saved Track Log.
4. Track Logs in the Track logs will be stored on the SD card and can be managed from the Manage Track Logs screen.

**Note:**

- **[RECORD]:** Enable (start) track log.
- **[DELETE]:** Delete the selected track log.
- **[MAP]:** Check the selected track log information on the map screen.



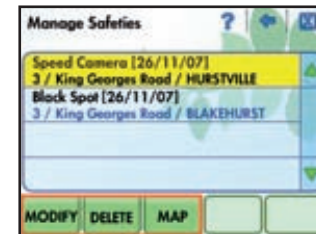
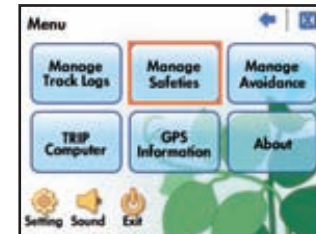
## Manage Safeties

Safeties are locations which are registered as My POI, then saved as a Safety information and managed with this feature. The additional safety information can be registered as speed camera, black spot, school zone, red light camera or railroad crossing location (see Registering Safety Information next page).

1. Touch [Manage Safeties] on the Menu screen.
2. Check the registered safety information on the Manage Safeties screen.

**Note:**

- **[MODIFY]:** Modify/edit the registered safety information.
- **[DELETE]:** Delete the registered safety information.
- **[MAP]:** Check the location of the point where the safety information was registered on the Map screen.



### Registering Safety Information

To register the safety information, search for a point or select a point after moving to the location on the Map screen. Then touch [Main].

Search for a location or point on the Map screen or if it is safe to do so move to the location you wish to register as a safety point.

1. Touch the point on the Map screen you wish to register or to register your current location touch [Map] on the Main menu bar.



2. Touch [Mark]



3. Touch [Safety] on the My POI Addition screen.



4. Touch the safety information for the desired point and then touch [Add].



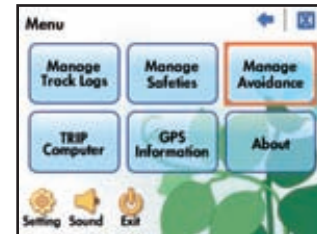
5. Touch [OK] to confirm and register the safety information.



### Manage Avoidance

Locations or points which have been saved as an Avoidance are managed here.

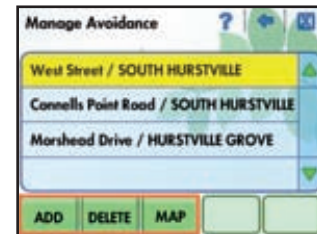
1. Touch [Manage Avoidance] on the Menu screen.



2. Check and manage the saved avoidance points on the Manage Avoidance screen.

#### Note:

- **[ADD]**: Add avoidance points.
- **[DELETE]**: Delete the registered avoidance points.
- **[MAP]**: Check the location of the currently selected avoidance point on the Map screen.





### Registering Avoidance Locations

Locations or points can be saved as an avoidance to be excluded when searching a route.

To register an avoidance, select a location or point on the Map screen first.

1. Touch the location to be added as an avoidance on the Map screen.
2. Touch [AVOID].
3. The avoidance point is saved.



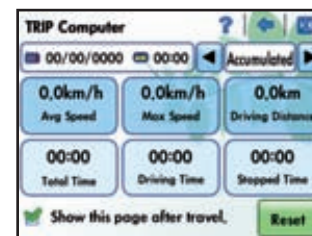
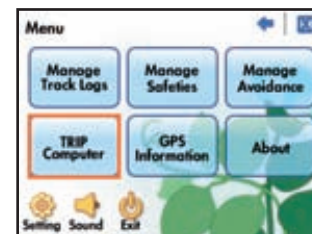
### TRIP Computer

The Trip Computer screen displays the running counters for the average speed, maximum speed, traveling distance, and traveling time.

1. Touch [TRIP Computer] on the Menu screen.  
Or, touch [Time/Date] on the Basic screen.
2. Check the necessary information on the TRIP Computer screen.

#### Note:

- **[Accumulated]:** Check the accumulated trip information.
- **[Recent]:** Check the information on the recent trip.
- **[Today]:** Check today's trip information.
- **[Reset]:** Delete all trip information stored.
- Show this page after automatically travel: Display the trip information automatically after traveling.



## Navigation Software

Uniden®

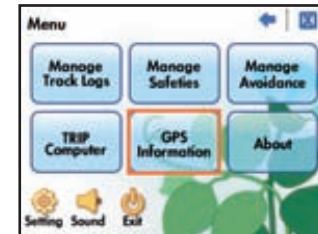
### GPS Information

The GPS Information screen displays the status of the GPS signal and information on the location of the car.

1. Touch [GPS information] on the Menu screen.
2. Check the necessary information on the GPS Information screen.

#### Note :

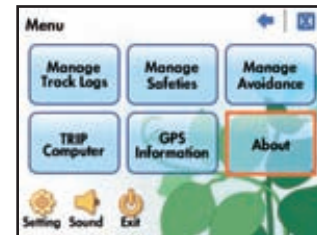
- **S**: Displays latitude coordinates.
- **E**: Displays longitude coordinates.
- **HDOP**: Displays the horizontal dilution of precision.
- **Altitude**: Display the current altitude.



### About

To view manufacturer information, version and license.

1. Touch [About] on the Menu screen.
2. Confirm the necessary information on the [About] screen.



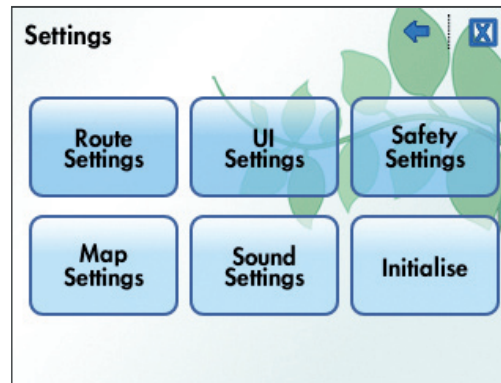
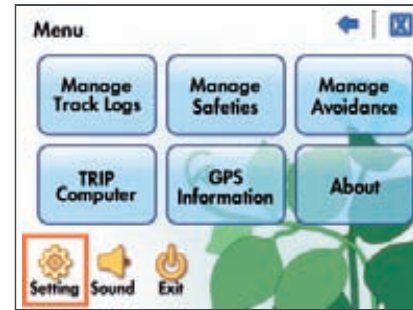
#### Note:

- [ABOUT]: Display information on the manufacturer.
- [VERSION]: Display information on the navigation program version.



## SETTINGS

Environment settings can be adjusted to suit your requirements.  
Touch [Main] then [Menu] then [Setting] from the basic screen to move to the Settings screen.



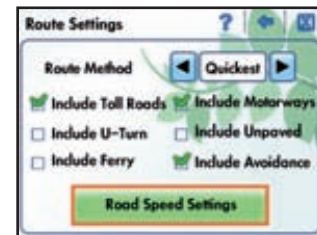
### Route Settings

The Route Settings allow you to adjust the settings which determine the calculation for a route.

1. Touch [Route Setting] on the Setting screen.
2. Route Method: Touch [◀] or [▶] to set the route method between Quickest, Shortest and Easiest.

**Note :**

- Include toll road route: Include toll roads in the route search method.
  - Include U-turn: Include U-turns in the route search method.
  - Include Ferry: Include ferry routes in the route search method.
  - Include Motorways: Include motorway routes in the route search method.
  - Include Unpaved: Include unpaved roads in the route search method.
  - Include Avoidance: Include the Avoidance points that you have saved in the route search method.
3. Touch [Road Speed Settings] to set the average road speeds used to calculate expected arrival time.



## UI Settings

The UI Settings allows for customization of the UI (User Interface).

1. Touch [UI Settings] on the Setting screen.
2. Specify UI setting options.



Guidance Mode-Auto



Guidance Mode-Text



Guidance Mode-Split

3. To change the icon of the car displayed on the map window, touch [Change Car].

### Note :

- **[Language]:** Select your language (English/Korean).
- **[Guidance Mode]:** Select the guidance mode for the map window (Auto/Split/Text).
- **[Side Bar]:** Select the location of the side bar (Left Side/Right Side/Hide).
- **[Change Car]:** Change the icon of the car to be displayed on the map window.



### Safety Settings

Safety Settings allows for customization of the safety options.

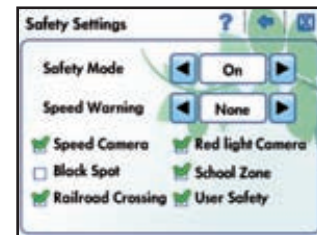
1. Touch [Safety Setting] on the Settings screen.
2. Safety Mode: Touch [◀] or [▶] to set Safety Mode On or Off. When set On the touchscreen is disabled while the car is in motion.

Speed Warning: Touch [◀] or [▶] to set the speed warning tolerance when approaching

Speed Cameras. The tolerance level can be set in +/- 5km/h increments.

#### Note :

- Include Speed Camera: Show information on speed cameras.
- Include Black Spot: Show information on black spots for motorways.
- Include Railroad Crossing: Show information on railway crossings.
- Include Red light Camera: Show information on red light cameras.
- Include School Zone: Show the information on school zones.
- Include User Safety: Show the user safety information.





## Map Settings

This menu is the function to set the map window options suitable for user's taste.

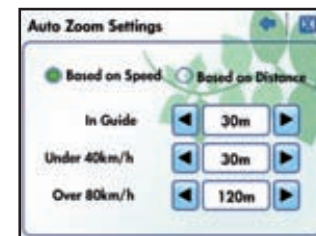
The Map Settings allows for customization of the map screen.

1. Touch [Map Setting] on the Settings screen.
2. Map Colour: Touch [◀] or [▶] to set the Map Colour between Warm and Cool.

### Note :

- Include POI Icon: Display POI icons on the map screen.
- Include Street Name: Display road names on the map screen.
- Include Brand Icon: Display brand icons on the map screen.
- Include POI Name: Display POI names on the map screen.
- Include Traffic Light: Display traffic lights on the map screen.
- Include Bread Crumb: Display bread crumb trails on the map screen.

3. Touch [Auto Zoom Settings] to set the Auto Zoom Settings function.



### Sound Settings

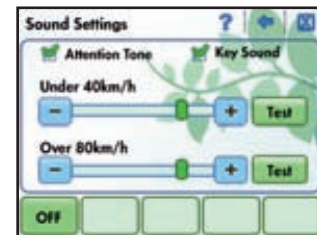
The menu is the function to adjust the volume suitable for user's taste.

Customize the sound settings.

1. Touch [Sound Settings] on the Settings screen.
2. Select the options for the volume control.

#### Note :

- Attention Tone : Select to enable attention tone.
- Key Sound: Select to enable key sound.
- **[TEST]** : Preview the specified volume through the speaker.
- **[ON/OFF]** : Turn the Volume function On/Off.



## Initialise

Initialize all settings back to the factory default status as follows.

1. Touch [Initialise] on the Settings window.
2. Touch [OK] to initialize all settings.



**Uniden®**

© 2008  
Uniden Australia Pty Limited  
Uniden New Zealand Limited  
Printed in China