

Bluetooth™ Connection Kit

Featuring the Socket Bluetooth Card™ and Windows CE software for adding Bluetooth wireless connectivity to the following mobile computers:

- *Pocket PC 2000s*
- *Pocket PC 2002s*
- *Handheld PC 2000s*

User's Guide



socket™
The Mobile Connection

How this Manual is Organized

This manual is designed to help you install and use the Socket Bluetooth Connection Kit.

Chapter 1, **Introduction**, describes key features of the Bluetooth Connection Kit and identifies package contents.

Chapter 2, **Basic Setup**, explains the minimum steps you need to complete to install and use the Bluetooth Card.

Chapter 3, **Features**, explains how to turn the transmitter on/off, use the Bluetooth ActiveSync and Bluetooth LAN Access options, and perform Bluetooth faxing.

Chapter 4, **Advanced Features**, shows additional steps you may choose to perform while installing and/or operating the Bluetooth Card.

Chapter 5, **The Socket Dialer**, explains how to install the Socket Dialer, assign a dialing prefix, and use the program to dial a number directly from your Contacts folder.

Chapter 6, **Bluetooth Printing**, shows how to print either directly from Pocket Word or Pocket Excel on an HPC 2000 or using the PrintPocketCE program included on the *Bluetooth Connection Kit Installation CD* on a Pocket PC.

Appendix A, **Specifications**, provides technical specifications for the Bluetooth Card.

Appendix B, **Safety and Usage Tips**, lists guidelines you should follow to use the Bluetooth Card safely and efficiently.

Appendix C, **Troubleshooting**, gives advice for fixing the most common problems you may encounter using the Bluetooth Card.

Appendix D, **Technical Support**, explains how you can reach Socket's technical support department.

Table of Contents

| | |
|---|-----------|
| CHAPTER 1 INTRODUCTION | 4 |
| CHAPTER 2 BASIC SETUP | 7 |
| STEP 1: Register the Card | 7 |
| STEP 2: Prepare Network Information | 7 |
| STEP 3: Install the Software | 7 |
| STEP 4: Complete the Bluetooth Setup Wizard | 8 |
| STEP 5: Insert the Card | 10 |
| STEP 6: Get Connected! | 11 |
| STEP 7: Dial-up to Your Network | 15 |
| CHAPTER 3 FEATURES | 20 |
| Turn Radio Transmitter ON/OFF | 20 |
| Bluetooth ActiveSync | 21 |
| Bluetooth LAN Access | 24 |
| Bluetooth Faxing | 27 |
| CHAPTER 4 ADVANCED FEATURES | 30 |
| Set up Your Bluetooth Card | 31 |
| Assign COM Ports | 32 |
| View Device Properties | 36 |
| Set up Your Favorite Device | 37 |
| Discover Bluetooth Device(s) | 33 |
| Bond with Discovered Device(s) | 34 |
| Change Views | 36 |
| Delete a Device from the Bluetooth Devices Folder | 39 |
| CHAPTER 5 THE SOCKET DIALER | 40 |
| CHAPTER 6 BLUETOOTH PRINTING | 43 |
| APPENDIX A SPECIFICATIONS | 47 |
| APPENDIX B SAFETY AND USAGE TIPS | 48 |
| APPENDIX C TROUBLESHOOTING | 50 |
| APPENDIX D TECHNICAL SUPPORT | 53 |
| LIMITED WARRANTY | 54 |
| COPYRIGHT NOTICE | 56 |
| REGULATORY COMPLIANCE | 57 |

Chapter 1 Introduction

Overview

The Socket Bluetooth Connection Kit makes it easy to add Bluetooth wireless connectivity to a Windows Powered Pocket PC 2000 or Pocket PC 2002 or a Windows CE-based HPC 2000. It's perfect for connecting any of these mobile computers wirelessly to your favorite Bluetooth phone, LAN access point, computer or printer.



The Bluetooth Card is the only plug-in card to incorporate all Bluetooth components within the CompactFlash Type I form factor. With a CompactFlash-to-PC Card adapter, the Bluetooth Card also works in a PC Card (PCMCIA) slot. You can purchase adapters separately online at: www.esend.com/socket/product.asp?sku=AC4000%2D978

The Bluetooth Connection Kit includes a Bluetooth Card and Bluetooth software, including drivers, the Bluetooth Setup Wizard, the Get Connected! Wizard, the Bluetooth Devices folder, and the Socket Dialer.

For quickly connecting your mobile computer to a Bluetooth phone, use the Get Connected! Wizard. Afterwards, you can use the Socket Dialer to directly dial a number from your Contacts list.

In addition to phones, Socket's Bluetooth software also makes it easy to connect to devices like computers, access points, and printers. The Bluetooth ActiveSync option guides you through connecting and synchronizing with a computer. Similarly, the Bluetooth LAN Access option helps you connect to a LAN access point. To connect to a printer or other type of device, use the advanced features found in the Bluetooth Devices folder.

This *User's Guide* explains how to install and use the Bluetooth Card. This guide shows Pocket PC 2000 and Pocket PC 2002 screens. Except where otherwise noted, other types of mobile computers will have functionally equivalent screens.

The term "Pocket PCs" refers to both Pocket PC 2000s and Pocket PC 2002s.

Software updates: www.socketcom.com/support/support_bluetooth.htm

Contents of the Connection Kit

The Socket Bluetooth Connection Kit includes these items:

- A Socket Bluetooth Card (CompactFlash card Type I)
- The *Socket Bluetooth Connection Kit Installation CD*



To register the kit online, visit: www.socketcom.com/product/prodreg.htm

Installation Steps Summary

Basic installation and operation of the Bluetooth Card for use with a Bluetooth phone can be completed in seven steps.

BASIC SETUP AND USE WITH A BLUETOOTH PHONE

STEP 1: Register the card.

STEP 2: Prepare network information.

STEP 3: Install the software.

STEP 4: Complete the Socket Bluetooth Setup Wizard.

STEP 5: Insert the Bluetooth Card into your mobile computer.

STEP 6: Get Connected!

STEP 7: Dial-up to your network.

FEATURES

- Turn transmitter ON/OFF
- Bluetooth ActiveSync
- Bluetooth LAN Access

ADVANCED FEATURES

- Set up your Bluetooth Card.
- Use the Bluetooth Devices folder.
 - View device properties.
 - Set up your favorite devices.
 - View/modify Bluetooth COM ports.
 - Discover other Bluetooth device(s).
 - Bond with another Bluetooth device.
 - Change views.
 - Delete a device from your folder.



Note: There are some important safety and usage guidelines you should read before operating the Bluetooth Card. Please refer to Appendix B, "Safety and Usage Tips."

Chapter 2 Basic Setup

This chapter covers the minimum steps you must complete to install and use the Bluetooth Card.

STEP 1: Register the Card

Register the card online at: www.socketcom.com/product/prodreg.htm

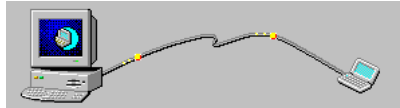
STEP 2: Prepare Network Information

Consult with your network administrator/MIS technician to obtain any necessary settings for your network (e.g. IP addresses, dial-up number, user name, password, etc.).

STEP 3: Install the Software

Follow these steps to install the software BEFORE inserting the Bluetooth Card.

1. Make an active connection between the mobile computer and a host PC.



An active connection exists if data can move between the host PC and mobile computer via a serial/USB/Ethernet connection cable or cradle.

2. Insert the *Bluetooth Connection Kit Installation CD* into the host PC.



3. The setup program should auto-run. Follow the instructions on your host computer and mobile computer screens to install the software.

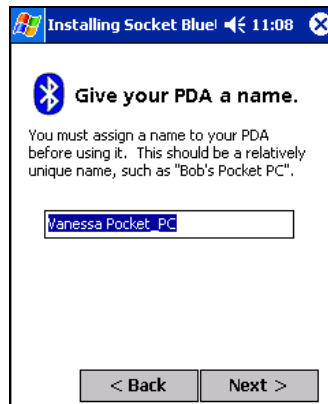
*Note: If the program fails to auto-run, use **My Computer** or **Windows Explorer** to access your CD-ROM drive. In the CD, click on **SETUP.EXE***

STEP 4: Complete the Bluetooth Setup Wizard

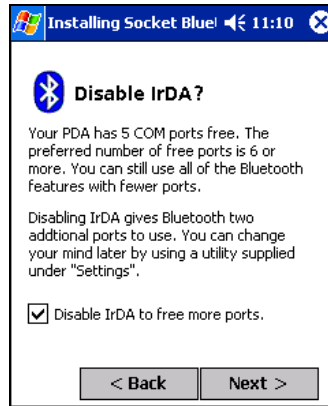
1. After you install the software, the Socket Bluetooth Setup Wizard will automatically launch on your mobile computer. Tap **Next>**.



2. Give your mobile computer a friendly name. Tap **Next>**.



3. If your mobile computer has fewer than 6 COM ports free, the Disable IrDA? Screen will appear. If desired, disable IrDA to free more ports. Tap **Next>**.



*Note: This will disable the IR port on a Pocket PC. To readjust the IrDA settings, go to **Start | Settings | System | IrDA**. Some devices do not allow you to disable IrDA.*



4. If your mobile computer still has fewer than 6 COM ports free, the next screen will allow you to choose which services you plan to use most. After making your selections, tap **Next>**.



Note: You cannot disable the Bluetooth Phone port.

5. In the last screen, tap **Finish**.
6. If you disabled IrDA while using the wizard, soft reset your mobile computer by pressing the reset button. This will be necessary for changes to take effect.

STEP 5: Insert the Card

Important!

Do NOT insert the card upside down or shove the card in too hard. Damage may occur!

Insert the card into your mobile computer's slot. If using a PC Card slot, first insert the Bluetooth Card into a CompactFlash-to-PC Card adapter (available separately). Make sure the blue label is on top.


Insert the card directly into a CompactFlash I/O slot...



...or plug the card into an adapter for use in a PC Card slot.




When properly inserted, the card unit will be fully contained within the slot.

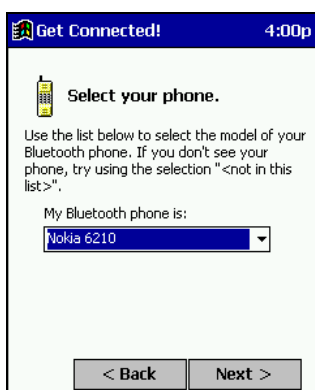
After the mobile computer recognizes the card, The Bluetooth icon  will appear in the task tray (visible in the Today screen for Pocket PCs).

STEP 6: Get Connected!

The Get Connected! Wizard guides you through a one-time setup process that prepares the mobile computer and phone for Bluetooth connections. The wizard varies depending on what phone you want to connect to.

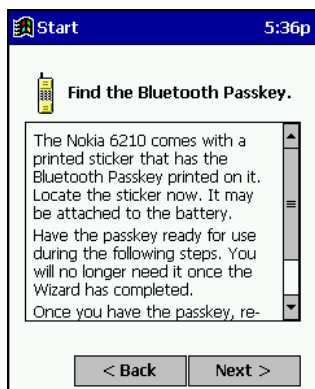
Ericsson, Nokia 6210, NTT DoCoMo, Sony Phones

1. Tap on the Bluetooth task tray icon (visible from the **Today** screen for Pocket PCs). In the pop-up menu, select **Get Connected!** 
2. Follow the **Bluetooth "Get Connected!" Wizard**. In the second screen, use the drop-down list to select your Bluetooth phone. The wizard will provide tailored instructions based on your selection.

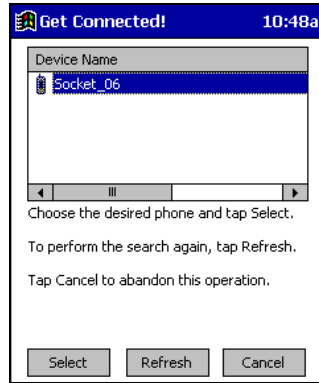


This example is for a Nokia phone. Your phone may differ.

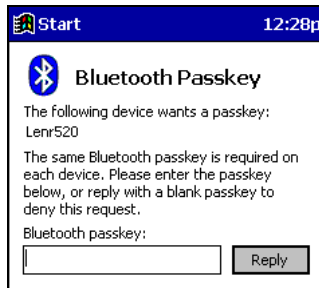
3. Follow the next screen(s) to prepare your specific phone for Bluetooth connections. You may need to do 1, 2 or all of the following steps:
 - a. Naming your Bluetooth phone
 - b. Setting your Bluetooth phone in Discoverable mode
 - c. Preparing your Bluetooth passkey



- When the search is complete, a list of the discovered Bluetooth phones will appear. Choose the phone you wish to connect to, and tap **Select**. A service discovery phase will begin, about 5-10 seconds.



- As prompted in the next screen, prepare your phone for bonding. For instructions on setting your phone to “Bondable” or “Pairable” mode, refer to your phone manual. Have your passkey ready, then tap **Next>**.
- In the next screen, enter the passkey. Tap **Reply**.



Note: Exchanging passkeys allows the phone and mobile computer to set up an encrypted data link for secure communications.


- The mobile phone may then either automatically accept the passkey or ask you to enter one. If prompted for a passkey, use the same one you entered on the mobile computer.

*Ericsson T68/T68i only: When the phone asks you if you want to bond, select **2: Add to paired devices**. Do not **ACCEPT**.*

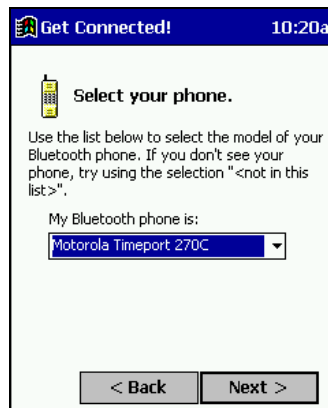
- Tap **Finish**. After successfully connecting, the phone will appear in the **Bluetooth Devices** folder. You will not need to run the Get Connected! Wizard again unless you plan to switch between different phones.

Note: You may also switch between different phones by assigning a new “favorite phone” in the Bluetooth Devices folder.

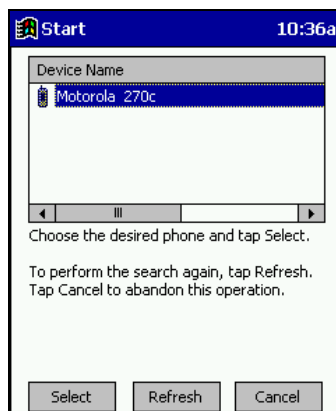
Motorola Timeport 270C, Nokia 6310

1. Tap on the Bluetooth task tray icon  (visible from the **Today** screen for Pocket PC devices). In the pop-up menu, select **Get Connected!**
2. Follow the **Bluetooth “Get Connected!” Wizard**. In the second screen, use the drop-down list to select your Bluetooth phone. The wizard will provide tailored instructions for your phone.

Note: The screens below are for the Motorola Timeport 270C.



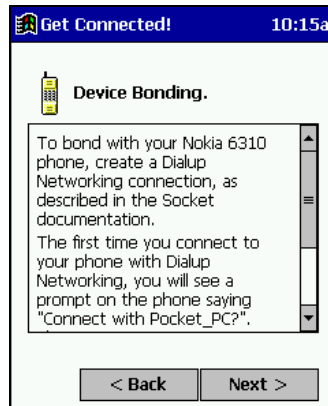
3. As directed in the next two screens, assign the phone a unique name and set the phone in Discoverable mode. Then tap **Next>**.
4. The mobile computer will begin to search for the phone. When the search is over, a list of the discovered Bluetooth phones will appear.



Choose the phone you wish to connect to, and tap **Select**. A service discovery phase will begin, about 5-10 seconds.

- The next two screens describe procedures you can only complete outside of the wizard. Read through each screen but do not complete the described procedures until you exit the wizard. Directions for these procedures are provided in *STEP 7: Dial-up to Your Network*, starting on the next page. The two procedures are:

Bonding with your phone — This must be completed in order to complete the Bluetooth connection and involves dial-up networking.



Automatic Connections — This procedure is optional but will make future Bluetooth connections more convenient.



- Continue to the last screen of the wizard and tap **Finish**. Now proceed to STEP 6 to complete the bonding process and, if desired, set up automatic connections.

STEP 7: Dial-up to Your Network

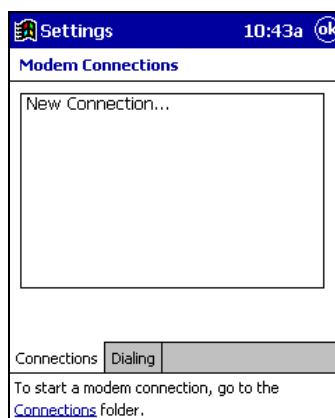
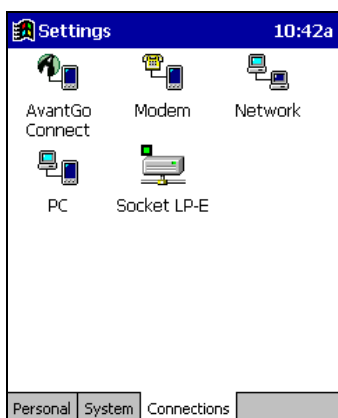
Complete the following steps to create a new Bluetooth connection. Before setting up dial-up networking, prepare yourself with dial-up information and other necessary settings for your office network or ISP.

Pocket PCs

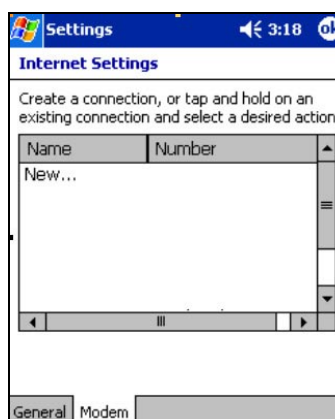
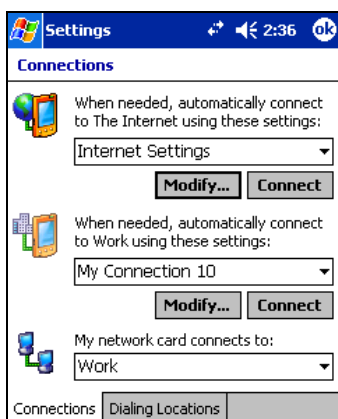
This section pertains to Pocket PC 2000s and Pocket PC 2002s.



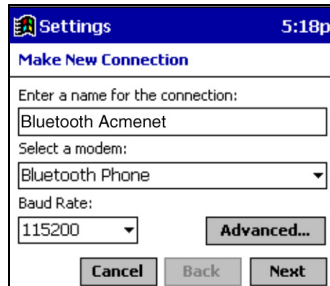
1. Pocket PC 2000 — Go to **Start | Settings | Connections | Modem**. In the next screen, tap **New Connection...**



- Pocket PC 2002 — Go to **Start | Settings | Connections**. Tap on the **Connections** icon. In the top field, select **Internet Settings**. Tap **Modify...** In the next screen, tap **New...**

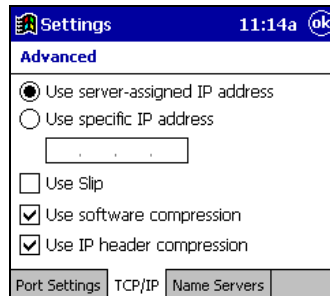


- In the next screen, enter a name for the dial-up connection. For the modem, select **Bluetooth Phone**. For the **Baud Rate**, select **115200**. Tap **Advanced...**

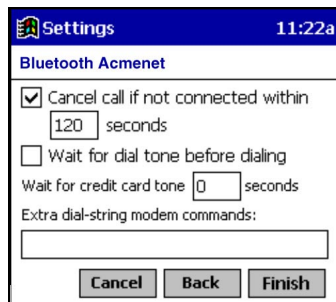


Note: Remember what you name the connection. You will need it when you start the connection.

- The **Port Settings** screen will appear. If needed, tap on the **TCP/IP** and/or **Name Servers** screens to enter any necessary settings for your office network or ISP. Tap **ok**.

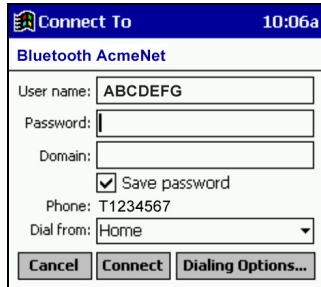


- Tap **Next**.
- In the **Phone number** field, enter the dial-up number. Tap **Next**.
- Uncheck **Wait for dial tone before dialing**. Tap **Finish**.



7. Now you are ready to start the connection.

Pocket PC 2000 — Go to **Start | Programs | Connections**. Tap on the Bluetooth connection you just set up. Make sure the dialing settings are correct. Tap **Connect**.



The screenshot shows a 'Connect To' dialog box for a Bluetooth connection named 'AcmeNet'. The time is 10:06a. The dialog contains the following fields and options:

- User name: ABCDEFG
- Password: (empty field)
- Domain: (empty field)
- Save password
- Phone: T1234567
- Dial from: Home (dropdown menu)
- Buttons: Cancel, Connect, Dialing Options...

Pocket PC 2000 — In the **Connections** screen, under **Internet Settings**, tap **Connect**. In **Network Log On**, verify the dialing settings. Tap **OK**.

8. **FOR MOTOROLA TIMEPORT 270C AND NOKIA 6310 ONLY:**
After you tap **Connect** for the first time, the phone will display a message asking if you want to bond. On Motorola, enter **GRANT**; on Nokia, enter **ACCEPT**. Make up a 4-16 digit passkey, enter it on the phone, then enter it on the Pocket PC. After successfully bonding, you can set up the phone for automatic connections.

Automatic Connections for Motorola Timeport 270C:

- On the phone, press **MENU**.
- Scroll to **Settings**, then press **SELECT**.
- Scroll to **Connection**, then press **ON**.
- On **Bluetooth Link**, press **SELECT**.
- Scroll to **Devices**, then press **SELECT**.
- Choose your mobile computer, then press **EDIT**.
- Scroll to **Access:Ask**, then press **CHANGE**.
- Scroll to **Automatic**, then press **SELECT**. Press **DONE**.

Automatic Connections for Nokia 6310:

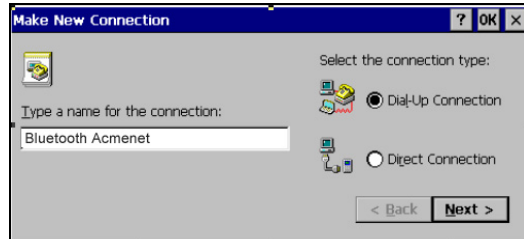
- On the phone, press **MENU**.
- Scroll to **10 Bluetooth**, then press **SELECT**.
- Scroll to **4 View Paired Devices**, then press **SELECT**.
- Highlight the Pocket PC, then press **OPTIONS**.
- Scroll to **3 Request Connection Authorization**, then press **NO**.

9. To use a different Bluetooth phone for dial-up networking, you can use the same connection setup, but you must make the new phone your favorite. Just run the **Get Connected! Wizard** again, select the new phone, and make it your new **Favorite** when prompted. Or you can use the Bluetooth Devices folder to change your favorite phone (see page 37).

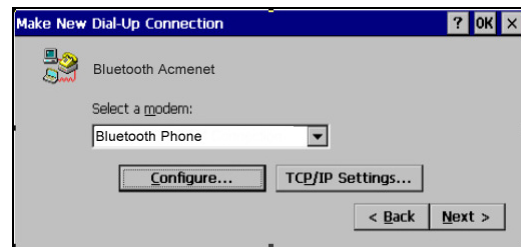
Handheld PC 2000



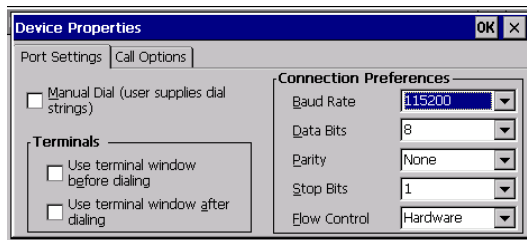
1. Go to **Start | Programs | Communication | Remote Networking | Make New Connection**.
2. In the next screen, enter a name for the Bluetooth connection. Select **Dial-Up Connection**. Tap **Next>**.



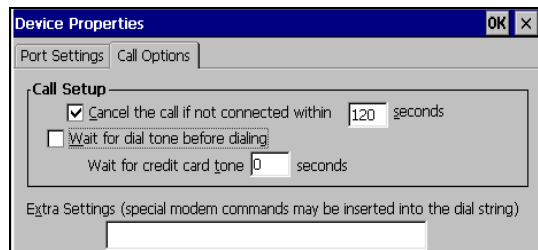
2. Select **Bluetooth Phone** for the modem. Tap **Configure...**



3. The **Port Settings** screen will appear. For **Baud Rate**, select **115200**. Tap on the **Call Options** tab.

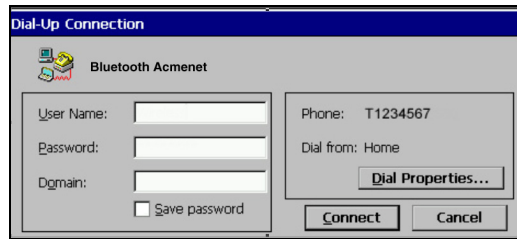


5. Uncheck **Wait for dial tone before dialing**. Tap **OK**.



6. If needed, tap on **TCP/IP** to enter any special network settings for your office network or ISP. Tap **OK**. In the next screen, tap **Next>**. Enter the dial-up number for your office network or ISP. Tap **Finish**.
7. Now you are ready to start the connection.

Go to **Start | Control Panel | Remote Networking**. Tap on your new Bluetooth connection. Enter the correct **User Name** and **Password**. Tap **Connect**.



8. **FOR MOTOROLA TIMEPORT 270C AND NOKIA 6310 ONLY:**

After you tap **Connect** for the first time, the phone will display a message asking if you want to bond. On Motorola, enter **GRANT**; on Nokia, enter **ACCEPT**. Make up a 4-16 digit passkey, enter it on the phone, then enter it on the handheld PC. After successfully bonding, you can set up the phone for automatic connections.

Automatic Connections for Motorola Timport 270C:

- On the phone, press **MENU**.
- Scroll to **Settings**, then press **SELECT**.
- Scroll to **Connection**, then press **ON**.
- On **Bluetooth Link**, press **SELECT**.
- Scroll to **Devices**, then press **SELECT**.
- Choose your mobile computer, then press **EDIT**.
- Scroll to **Access:Ask**, then press **CHANGE**.
- Scroll to **Automatic**, then press **SELECT**. Press **DONE**.

Automatic Connections for Nokia 6310:

- On the phone, press **MENU**.
- Scroll to **10 Bluetooth**, then press **SELECT**.
- Scroll to **4 View Paired Devices**, then press **SELECT**.
- Highlight the Pocket PC, then press **OPTIONS**.
- Scroll to **3 Request Connection Authorization**, then press **NO**.


9. To use a different Bluetooth phone for dial-up networking, you can use the same connection setup, but you must make the new phone your favorite. Just run the **Get Connected! Wizard** again, select the new phone, and make it your new **Favorite** when prompted. Or you can use the Bluetooth Devices folder to change your favorite phone (see page 37).

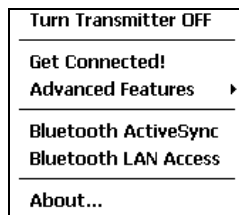
Chapter 3 Features

This chapter explains how to turn the Bluetooth ON/OFF and how to use the Bluetooth ActiveSync and Bluetooth LAN Access options.

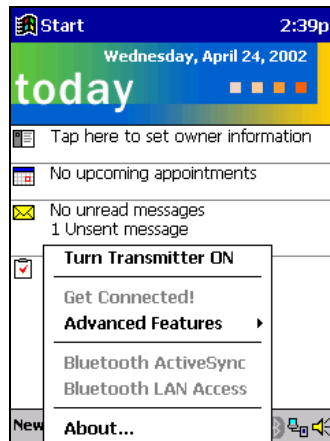
Turn Radio Transmitter ON/OFF

You may want to turn off the radio transmitter to save power or if you are entering an area with radio restrictions (e.g., an airplane).

1. After you insert the Bluetooth Card, the Bluetooth icon  should appear in the task tray (visible from the **Today** screen for Pocket PCs). Tap on the icon.
2. In the pop-up menu, select **Turn Transmitter OFF**.




3. The Bluetooth Card radio transmitter will shut off. The Bluetooth icon in the task tray will become gray, as will relevant menu options (e.g., **Get Connected!**).



4. To turn the radio transmitter back on, tap on the grey Bluetooth icon. In the pop-up-menu, select **Turn Transmitter ON**.

Bluetooth ActiveSync

This section explains how to use the Bluetooth ActiveSync feature. It helps you quickly and easily ActiveSync to a notebook or desktop computer with ActiveSync v3.x installed.

1. Tap on the Bluetooth icon . In the pop-up menu, select **Bluetooth ActiveSync**.

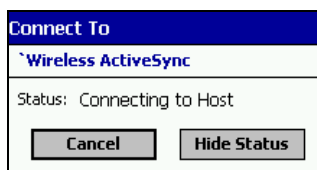


2. The next screens will vary depending on if your Bluetooth Devices folder contains any computers, and if one is chosen as your favorite. Please refer to the appropriate scenario:

SCENARIO #1: Your Bluetooth Devices folder contains a favorite desktop computer.



- (a) When you tap **Bluetooth ActiveSync**, your mobile computer will automatically try to connect to your favorite computer.
- (b) The **Connect To** screen will appear, reporting that it is trying to connect to **Wireless ActiveSync**.



- (c) After a successful connection is made, the status screen will report **Connected**. Now you are ready to synchronize files, if desired.

SCENARIO #2: Your Bluetooth Devices folder contains no favorite desktop computer.

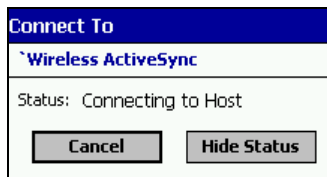


- (a) When you tap on **Bluetooth ActiveSync**, a screen will appear that allows you to choose which computer to connect to in your Bluetooth Devices folder. Choose a computer from the list and tap **Select**, or tap **Find** to search for another computer.



*Note: If the computer you want to connect to is not listed, tap **Find** to begin a search. Proceed as described in Scenario #3 on the next page.*

- (b) Your mobile computer will attempt to connect to your selected computer.

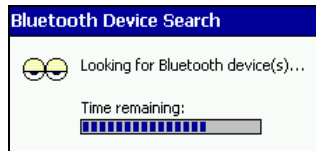


- (c) After a successful connection is made, the status screen will report **Connected**. Now you are ready to synchronize files, if desired.



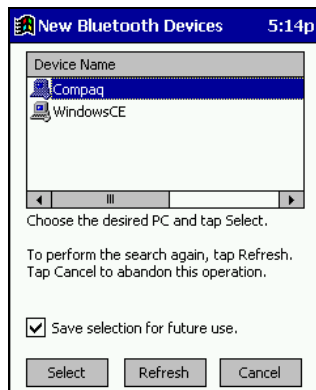
SCENARIO #3: Your Bluetooth Devices folder contains no computers.

- (a) When you tap on **Bluetooth ActiveSync**, a Bluetooth Device Search will automatically begin.



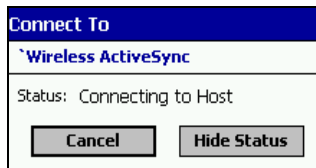
*Note: You can also start the device search by tapping **Find** in the Bluetooth Devices screen. See Scenario #2 on the previous page.*

- (b) After the search is complete, select the computer you wish to ActiveSync with and tap **Select**. If the computer is not listed, make sure the computer id discoverable and tap **Refresh** to search again.



If you would like to save the new computer to your Bluetooth Devices manager, check **Save selection for future use**.

- (c) After you tap **Select**, a service discovery phase will begin.
- (d) The **Connect To** screen will appear, reporting that it is trying to connect to **Wireless ActiveSync**.



- (e) After a successful connection is made, the status screen will report **Connected**. Now you are ready to synchronize, if desired.

Bluetooth LAN Access

This section explains how to use the Bluetooth LAN Access feature to quickly and easily connect to a Bluetooth-enabled LAN access point.

1. Tap on the Bluetooth icon. In the pop-up menu, select **Bluetooth LAN Access**.



2. The next screens will vary depending on if your Bluetooth Devices folder contains any access points, and if one is chosen as your favorite. Please refer to the appropriate scenario:

SCENARIO #1: Your Bluetooth Devices folder contains no favorite access point.



- (a) When you tap Bluetooth LAN Access, a screen will appear that allows you to choose which access point to connect to in your Bluetooth Devices folder. Choose an access point from the list and tap **Select**.



If you would like to save the new access point to your Bluetooth Devices manager, check **Save selection for future use**.

Note: If your access point is not listed, tap Find and proceed as described in Scenario #3.

- (b) Your mobile computer will try to connect to the selected access point.



- (c) If your LAN requires a passkey, a screen will appear, asking for the passkey. Enter the passkey, then tap **ok**.
- (d) After a successful connection is made, the status screen will report **Connected**.



- (e) Now you are ready to access your LAN for Internet access, files, etc.

SCENARIO #2: Your Bluetooth Devices folder contains a favorite access point.



- (a) When you tap **Bluetooth LAN Access**, your mobile computer will automatically try to connect with your favorite access point.



- (b) If your LAN requires a passkey, a screen will appear, asking for the passkey. Enter the passkey, then tap **ok**.
- (c) After a successful connection is made, the status screen will report **Connected**.



- (d) Now you are ready to access your LAN for Internet access, files, etc.

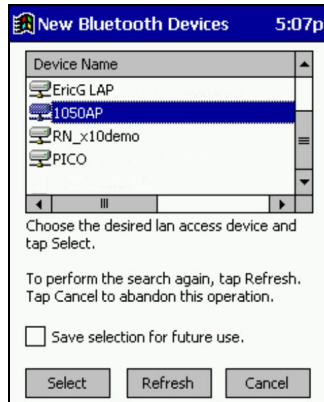
SCENARIO #3: Your Bluetooth Devices folder has no access points.

- (a) When you tap Bluetooth LAN Access, the mobile computer will automatically begin to search for new Bluetooth devices.



*Note: You can also start the device search by tapping **Find** in the Bluetooth Devices screen. See Scenario #2 on the previous page.*

- (b) After the search is complete, select the access point you wish to connect to. Tap **Select**. If the access point is not listed, tap **Refresh** to search again.



If you would like to save the new access point to your Bluetooth Devices manager, check **Save selection for future use**.

- (c) After you tap Select, a service discovery phase will begin.



- (d) If the LAN requires a Passkey, a screen will appear, asking for the Passkey. Enter the passkey, then tap **ok**.
- (e) After a successful connection is made, the screen will report **Connected**.

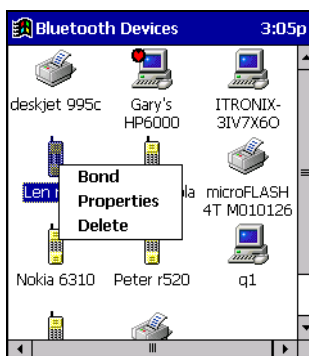


- (f) Now you are ready to access your LAN for Internet access, files, etc.

Bluetooth Faxing

Many Bluetooth phones and other types of Bluetooth-enabled devices support faxing. This chapter explains how to use such a device with the Bluetooth Card and your mobile computer for wireless faxing. The Socket Bluetooth Connection Kit does not include faxing software. You must obtain Bluetooth faxing software separately from a third party.

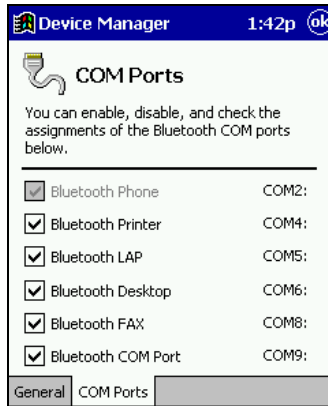
1. If using a Bluetooth phone, use the Get Connected! Wizard to connect to the phone. If using another type of Bluetooth-enabled device, use the Device Discovery Wizard to connect it to your mobile computer.
2. Make sure your Bluetooth-enabled device supports faxing.
 - In the Bluetooth Devices folder, select the device.
 - View the device's properties by either tapping on the properties icon or tapping **Device | Properties**. On a Pocket PC, you can also tap and hold your stylus on the device. In the pop-up menu, select **Properties**.



- Tap on the **Services** tab. Make sure **Fax** is listed. Tap **ok**.



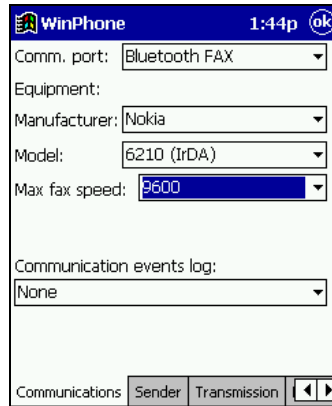
3. Make sure a COM port is enabled for faxing.
 - Tap on the Bluetooth icon. Select **Advanced Features**, then **My Bluetooth Device**. Tap on the **COM Ports** tab.
 - In the **COM Ports** screen, make sure **Bluetooth Fax** is checked.
 - Note the COM port number assigned to faxing. You may need this to configure your fax software. Tap **ok**.



4. Assign your Bluetooth phone as your favorite fax.
 - In the Bluetooth Devices folder, tap **Tools | My Favorites**.
 - Tap on the **FAX** tab.
 - Select **Use the favorite selected above**, then select your phone from the drop-down menu. Tap **ok**.



5. Now you are ready to use your fax software. While configuring the fax connection, select either **Bluetooth FAX** or the COM port assigned to Bluetooth faxing.



The screenshot shows a configuration window titled "WinPhone" with a time of 1:44p and an "ok" button. The window contains several dropdown menus for configuration:

- Comm. port: Bluetooth FAX
- Equipment: (empty)
- Manufacturer: Nokia
- Model: 6210 (IrDA)
- Max fax speed: 9600
- Communication events log: None

At the bottom, there is a "Communications" section with "Sender" and "Transmission" tabs, and navigation arrows.

Chapter 4 **Advanced Features**


This chapter explains optional steps you may choose to perform while installing and/or using the Bluetooth Card.

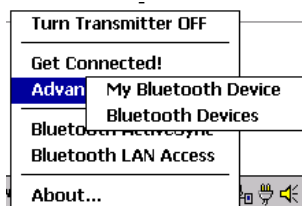
The steps covered in this chapter include:

- Setting up your Bluetooth Card
- Viewing and enabling/disabling Bluetooth COM ports
- Using the Bluetooth Device Discovery Wizard
- Using the Bluetooth Device Bonding Wizard
- Viewing device properties
- Setting up a Favorite Device
- Changing views
- Deleting an item from the Bluetooth Devices folder

Set up Your Bluetooth Card

Note: If you use the Get Connected! Wizard, which is recommended for normal usage, then this step is not necessary. This step would be used to change the friendly name of your mobile computer.

1. After you insert the Bluetooth Card, the Bluetooth icon  should appear in the task tray (visible from the **Today** screen for Pocket PCs). Tap on the icon.
2. In the pop-up menu, select **Advanced Features**, then **My Bluetooth Device**.



3. In the **My Bluetooth Device** screen, you can modify the **Friendly Name** and make any desired configuration changes. When done, tap **OK**.



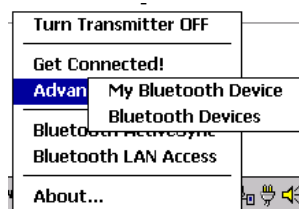
Note:

- In normal phone connect operation, **Discoverable** mode is not needed and should be disabled.
- If you do enable **Discoverable** mode (e.g., for ActiveSync), note that it does not shut off by itself. To save power, remember to disable it when not needed.
- **Connectable**, **Use Authentication**, and **Use Encryption** are also not required for printing or dial-up networking applications.
- Check **Use Authentication** to enable the **Use Encryption** option.

Assign COM Ports

Follow these steps to view and/or modify the Bluetooth COM ports.

1. Tap on the Bluetooth icon (in the **Today** screen for Pocket PCs). Select **Advanced Features** then **My Bluetooth Device**.



2. The **My Bluetooth Device** screen will appear. Tap on the **COM Ports** tab.



3. As needed, view and/or enable/disable the Bluetooth COM port assignments. Tap **ok**.




Note: The Bluetooth Phone port cannot be disabled.

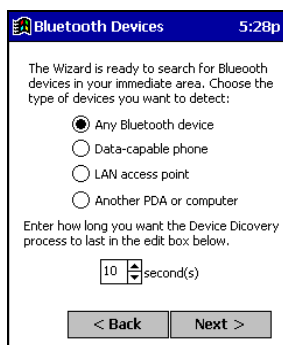
Discover Bluetooth Device(s)

Follow these steps to discover other Bluetooth devices nearby, including non-phone devices. The Device Discovery Wizard is a more detailed alternative to using the Bluetooth “Get Connected!” Wizard or Bluetooth ActiveSync or Bluetooth LAN Access options. The Device Discovery Wizard allows you to discover any type of Bluetooth device.

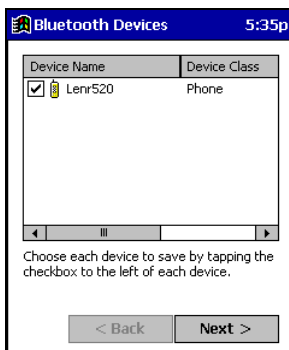
1. If not open, launch the **Bluetooth Devices** folder:
Tap on the Bluetooth icon (in the **Today** screen for Pocket PCs). Select **Advanced Features** then **Bluetooth Devices**.

HPC 2000s — You can also tap on **Bluetooth Devices** on the desktop.

2. In the **Bluetooth Devices Folder**, tap on the **Device Discovery** icon .
Or you can tap on **Tools**. In the pop-up menu, select **Device Discovery**.
3. Follow the **Bluetooth Device Discovery Wizard** to search for Bluetooth devices nearby. When prompted, select the device type you seek.



4. When the search is complete, a screen will report the discovered Bluetooth devices. Check the box next to any device you wish to save information about, (i.e., any devices you wish to connect to). Tap **Next>**.



5. A service discovery phase will begin, 5-10 seconds per chosen device.
6. In the next screen, tap **Finish**.

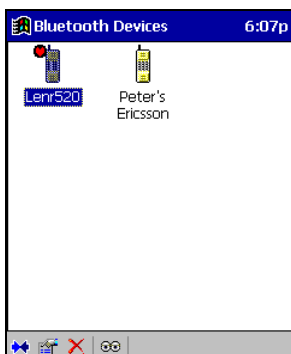
Bond with Discovered Device(s)


Follow these steps to bond with an already discovered Bluetooth device. In most cases, bonding is for establishing secure communications with a Bluetooth-enabled phone. This is a more detailed alternative to using the Bluetooth “Get Connected! Wizard.”

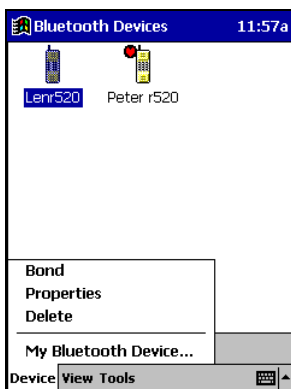
Important!

- *Do not try to bond with a Motorola Timeport 270C or Nokia 6310!*
- *Do not use this method to bond with a printer! The third-party printing software included on the installation CD also handles bonding.*

1. If not open, launch the **Bluetooth Devices** folder:
Tap on the Bluetooth icon (in the **Today** screen for Pocket PC devices).
Select **Advanced Features** then **Bluetooth Devices**.
HPC 2000s — You can also tap on **Bluetooth Devices** on the desktop.
2. Tap and hold your stylus on the Bluetooth device you want to bond with.
In the pop-up menu, select **Bond**.



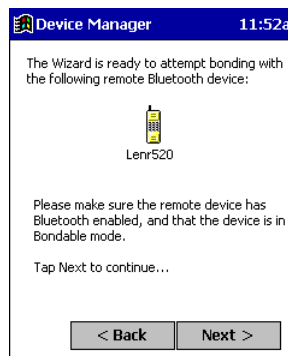
3. Alternatively, after selecting a device, tap on the **Bond** icon .
Or tap on **Device**, then select **Bond**.



4. The **Bluetooth Device Bonding Wizard** will launch. Follow the wizard to bond with your selected device.



5. As prompted, make sure the Bluetooth device that you want to bond with is in Bondable mode.



6. If the remote device is set up to accept bonding, a **Bluetooth Passkey** screen will appear. To continue bonding, enter the correct passkey and tap **Reply**.



7. When you have successfully bonded with the other device, tap **Finish**.

View Device Properties

Follow these steps to view the properties of an already discovered device.

1. If not open, launch the **Bluetooth Devices** folder.
Tap on the Bluetooth icon (in the **Today** screen for Pocket PCs). Select **Advanced Features** then **Bluetooth Devices**.

For HPC 2000s, you can also tap on the **Bluetooth Devices** folder directly on the desktop.

2. Select a device. Tap on the **Properties** icon , or tap on **Device** then select **Properties**.

Pocket PCs — Alternatively, you can tap and hold your stylus on the Bluetooth device you want to view information about. In the pop-up menu, select **Properties**.



3. Use the **General** and **Services** screens to research device properties.

If needed, assign a new device type icon by tapping on the arrow buttons in the **General** screen. You can also use the **Device name** field to rename the device. When done, tap **ok** for the setting to take effect.



Set up Your Favorite Device

Follow these steps to set up default devices in the **Bluetooth Devices** folder.

Note: The Get Connected! Wizard automatically assigns the favorite phone.

1. Tap on **Tools** and select **My Favorites**.
2. Tap on the tab for the type of device you would like to set a favorite for.




3. To select a favorite device, select **Use the favorite selected above**. In the drop-down menu, select your device. Tap **ok**.
4. After setting a device as your favorite, its icon will appear in the Bluetooth Devices folder with a heart next to it.



What if I can't connect to a device in the Bluetooth Devices folder, or I can't select it as my favorite?

You can connect to a device only if its services have been successfully discovered. Follow these steps to perform a service discovery:

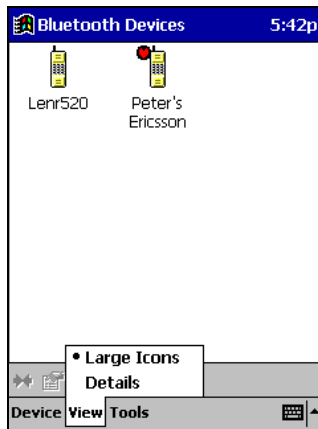
*With the device selected in the folder, tap on **Properties** , then select the **Services** tab. Tap the **Update** button.*

Please report any devices that you have problems discovering services for. Email askbluetooth@socketcom.com

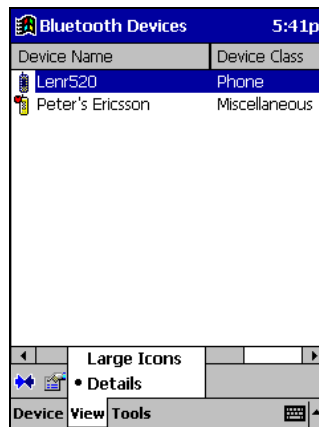
Change Views

You can switch between the **Large Icons** or **Details** views for the **Bluetooth Devices** folder.

1. In **Bluetooth Devices**, tap on **View**.
2. In the pop-up menu, choose between **Large Icons** or **Details**.



Large Icons view



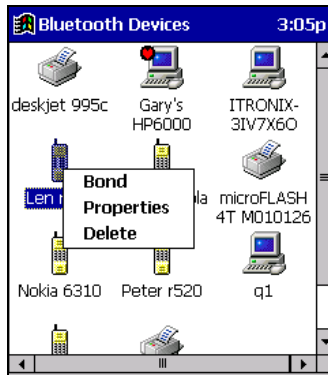
Details view


Note: In Details view, scroll right to see the current Bonded status.

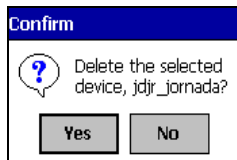
Delete a Device from the Folder

If you no longer plan to connect with it, you can delete a device from the **Bluetooth Devices** folder.

1. If not open, launch the **Bluetooth Devices** folder.
2. Pocket PCs only: Tap and hold your stylus on the device you wish to delete. In the pop-up menu, select **Delete**.



3. Alternatively, after selecting a device, tap on the **Delete** icon . Or tap on **Device** then select **Delete**.
4. A **Confirm** screen will appear. Tap **Yes**.



Chapter 5 The Socket Dialer

This chapter explains how to assign a dialing prefix and use the Socket Dialer to dial a number directly from your Contacts list. The Socket Dialer makes it quick and easy to perform dial-up networking.

If you have not done so already, be sure to run the Dialer Installer from the *Socket Bluetooth Card Installation CD*. While installing the program, you can also assign the dialing prefix.

Note: The Socket Dialer has been verified to work with Nokia and Ericsson phones and is known not to work with the Motorola 270c or Sony au C413S phone. Results may vary with other phones that are not listed as being supported by the Socket Bluetooth system.

Assign a Dialing Prefix

If you have not already assigned a dialing prefix during the install process, you can do so by following these steps:

1. Pocket PC devices — Go to **Start | Settings | System**. Tap on **Socket Dialer**.
HPC — Go to **Start | Settings | Control Panel**. Tap on **Socket Dialer**.

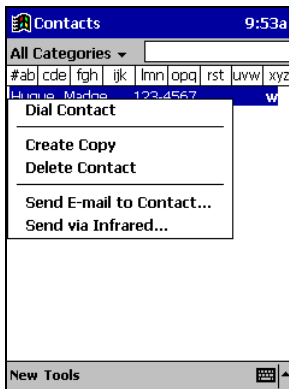


2. Select the appropriate **Dialing Prefix**, then tap **ok**.

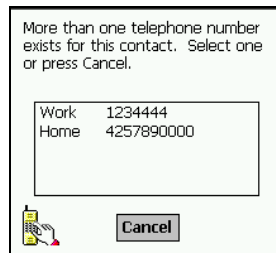


Use the Socket Dialer

1. To use the dialer, the mobile computer must already be connected to the Bluetooth phone. You can use the Get Connected! Wizard to do this. Also, the Bluetooth phone must be selected as your favorite.
2. Pocket PC devices — Go to **Start | Contacts**.
HPC 2000 — Click on the **Contacts** icon from the desktop.
3. Tap and hold your stylus on the contact you wish to dial to. In the pop-up menu, select **Dial Contact**. Alternatively, you can tap on **Tools** and select **Dial Contact**.



4. If you have multiple phone numbers for a contact, a screen will appear listing them, including any dialing prefix you may have assigned. Select the phone number you wish to dial.



5. Your mobile computer will connect to your phone and begin dialing.



Note: The Socket Dialer can dial a phone number containing any of the 17 following non-numeric characters:

* # + . / ! @ - \ space A B C D T P W

Additionally, the following string can be included in a phone number:

(,')

The Socket Dialer can not dial a phone number containing non-numeric characters other than those listed above.

Socket recommends that you follow the standard Microsoft Outlook format for phone numbers.

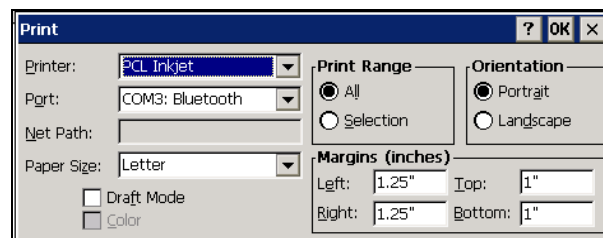
Chapter 6 Bluetooth Printing

This chapter explains how to print from a Bluetooth-enabled printer, using either of two options. If you have a HPC 2000, you can print directly from Pocket Word or Pocket Excel. If you have a Pocket PC, you can install the PrintPocketCE software included on the installation CD to print from your device.

HPC 2000 only:

With the right settings, you can print directly from Pocket Word or Pocket Excel.

1. In the Print screen, select your Bluetooth printer and Bluetooth COM port. Tap **OK**.



2. A Bluetooth device search will begin.
3. After the search, select the Bluetooth printer from the list and tap **Select**. If the printer does not appear, tap **Refresh** to try again.



*Note: Check **Save selection for future use** if you would like to save the discovered printer in your Bluetooth Devices folder.*

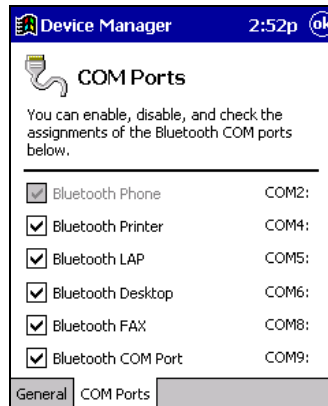
4. After a successful connection is made, the status screen will report **Connected**. Printing should now begin.

Pocket PC 2000 or Pocket PC 2002:

You can print using the PrintPocketCE program included on the *Socket Bluetooth Card Installation CD*. The Socket Bluetooth Connection Kit includes a 30-day trial version of PrintPocketCE. For a full version, please visit: www.fieldsoftware.com

If you have not done so already, be sure to install the PrintPocketCE program. To find the install for this program on the installation CD, go to the Third Party folder, then the Field Software folder.

1. First check which COM port is assigned to your Bluetooth printer.
 - Tap on the Bluetooth icon.
 - Tap on **Advanced Features** then **My Bluetooth Device**.
 - Tap on the **COM Ports** tab. Make sure the **Bluetooth Printer** box is checked. After identifying the Bluetooth Printer COM port number, tap **ok**.

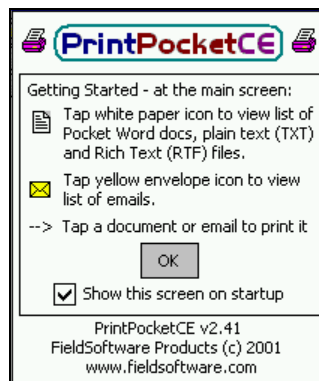


2. Start the printing program. Go to **Start | Programs | PrintPocketCE**.

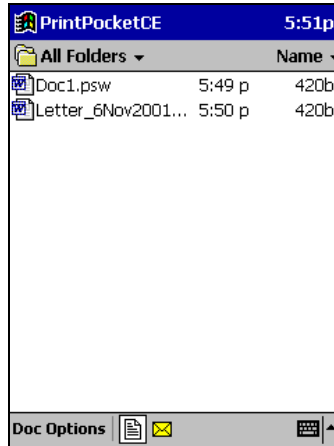


PrintPocke...

3. In the welcome screen, tap **OK**.

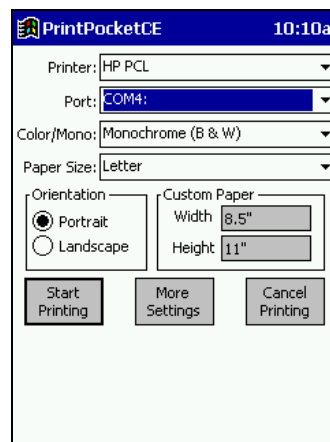


4. In the main screen, tap on the file you wish to print.

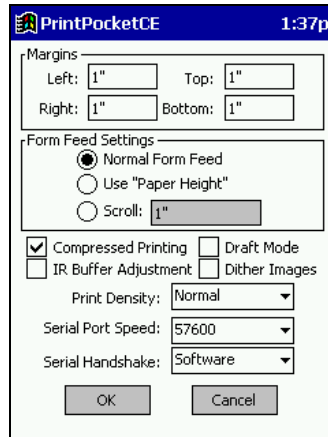


To locate your file, you can tap on the white paper icon at the bottom of the screen to view a list of Pocket Word docs, TXT, or RTF files. Tap on the yellow envelope icon to view email messages. Use the folders drop-down menu to switch between folders.

5. In the next screen, make sure the correct printer is chosen. For **Port**, choose the COM port assigned to your Bluetooth printer. Make any other necessary printer settings.



If needed, tap on **More Settings** to adjust margins, form feed, and other settings. Tap **OK** to return to the main printing screen.



When done adjusting the settings, tap **Start Printing**.

6. The mobile computer will search for a Bluetooth printer. After the search, the Bluetooth Devices folder will appear. Select the Bluetooth printer, then tap **Select**.



If the mobile computer fails to detect the Bluetooth printer, make sure the printer is on, discoverable, and in range. Tap **Find** to repeat the search.

7. The document will begin printing.
8. To exit the program, tap **Doc Options**. In the pop-up menu, tap **Exit**.

Appendix A Specifications

Physical Characteristics:

CF I/O Card Size: 1.43 x 1.69 x 0.13 in (36.4 x 42.8 x 3.3 mm)

Power Consumption (3.3 V Supply):

Idle: 16 mA

Typical: 40 mA

Maximum: 90 mA

Interface Standards:

CompactFlash Interface: CompactFlash I/O, Type I

With CompactFlash-to-PC Card Adapter: PCMCIA, Type II

Serial Communications: TTL

Operating System Support:

Windows CE v3.0 for Pocket PC 2000, Pocket PC 2002 and Handheld PC 2000

Software Compatibility:

Windows COM port

Hardware Compatibility:

Standard Card (without PC Card adapter):

Pocket PC 2000, Pocket PC 2002 or HPC 2000 with CompactFlash I/O slot

With CompactFlash-to-PC Card adapter:

Pocket PC 2000, Pocket PC 2002 or HPC 2000 with PC Card slot.

Software Included:

Socket Bluetooth Connection Kit Installation CD

Compatible Applications:

PrintPocketCE

Warranty:

CompactFlash Card: Three years

Certification:

FCC: Part 15, Class B

C-TICK s.182

Bluetooth 1.1

ETS 300 328 ETS 300 826

Appendix B Safety and Usage Tips

Product Care

- Do not expose your product to liquid, moisture or extreme humidity.
- Do not expose your product to extreme high or low temperatures.
- Do not expose your product to lit candles, cigarettes, or cigars, or to open flames, etc.
- Do not drop, throw or try to bend the product, as rough treatment could damage it.
- Do not paint your product, as the paint could obstruct parts and prevent normal use.
- Do not attempt to disassemble your product: a broken warranty seal will void the warranty. The product does not contain consumer serviceable components. Should your Bluetooth Card need service, please contact Socket technical support at: techsupport@socketcom.com.
- Treat your product with care. Keep in a clean and dust-free place.
- Changes or modifications of this product, not expressly approved by Socket, may void the user's authority to operate the equipment.

Antenna Care

Do not place a metallic shield around your Bluetooth Card since it will reduce the radio transmission efficiency.

Efficient Use

For optimum performance, please make sure that there is no metal surrounding your Bluetooth Card.

Driving

RF energy may affect some electronic systems in motor vehicles, such as car stereo, safety equipment, etc. Check with your vehicle manufacturer's representative to be sure that your Bluetooth Card will not affect the electronic system in your vehicle.

Aircraft

- Turn off your Bluetooth Card antenna before boarding any aircraft.
- To prevent interference with communications systems, you must not use your Bluetooth Card while the plane is in the air.
- Do not use it on the ground without permission from the crew.

Radio Frequency Exposure

Your Bluetooth Card is a radio transmitter and receiver. When in operation, it communicates with a Bluetooth-equipped mobile phone or mobile computer by receiving and transmitting radio frequency (RF) magnetic fields in the frequency range 2400 to 2500 MHz. The output power of the radio transmitter is 0.001 Watt.

The Bluetooth Card unit is designed to be in compliance with the RF exposure limits set by national authorities and international health agencies¹ when installed or used separately from other antennas or radio transmitters.

¹ Examples of RF exposure standards and guidelines:

ICNIRP, “Guidelines for limiting exposure to time-varying electric, magnetic, and electromagnetic fields (up to 300 GHz)”, International Commission on Non-Ionizing Radiation Protection (ICNIRP), Health Physics, vol. 74, pp 494-533, April 1998.

99/519/EC, EU Council Recommendation on the limitation of exposure to the general public to electromagnetic fields 0 Hz – 300 GHz, Official Journal of the European Communities, July 12, 1999.

ANSI/IEEE C95.1-1992, “Safety levels with respect to human exposure to radio frequency electromagnetic fields, 3 kHz to 300 GHz”, The Institute of Electrical and Electronics Engineers, Inc., New York, 1991.

FCC Report and Order, ET Docket 93-62, FCC 96-326, Federal Communications Commission (FCC), August 1996.

Radiocommunications (Electromagnetic Radiation Human Exposure) Standard 1999, Australian Communications Authority (ACA), May 1999.

Appendix C Troubleshooting

SYMPTOM:

- I cannot connect to a device in my folder.

| POSSIBLE REASONS | SOLUTION |
|--|--|
| The services for the devices have not been discovered. | In the Bluetooth Devices folder, tap on the Properties icon. Tap on the Services tab. In the Services screen, tap on the Update button. |

SYMPTOM:

- When I use the Get Connected! Wizard to connect to my phone, I get a screen that says *Partial Success*.

| POSSIBLE REASONS | SOLUTION |
|------------------------------------|---|
| The phone is not in Bondable mode. | Set your phone to Bondable mode. If needed, consult your phone's documentation for help. |
| The passkey is incorrect. | Make sure the same passkey is entered on the phone and your mobile computer. If using a pre-assigned passkey for the phone, verify that your passkey is accurate. |

SYMPTOM:

- When I insert the Bluetooth Card, I get a message that says *Unrecognized Card*.

| POSSIBLE REASONS | SOLUTION |
|--|---|
| You did not install the software for the Bluetooth Card yet. | Remove the card and install the software. |

SYMPTOM:

- My mobile computer cannot find any Bluetooth devices nearby.

| POSSIBLE REASONS | SOLUTION |
|---|---|
| You are too far from other Bluetooth devices. | Move closer to the other Bluetooth device(s), within a range of 10 meters. |
| The Bluetooth device(s) nearby are not turned on. | Turn on the Bluetooth device(s) you wish to find. |
| The Bluetooth device(s) are not in discoverable mode. | Set the Bluetooth device(s) to discoverable mode. If needed, consult the device's documentation for help. |

SYMPTOM:

- My mobile computer keeps powering down to protect memory contents.

| POSSIBLE REASONS | SOLUTION |
|---|---|
| Your mobile computer's battery is low. | Recharge the battery. |
| The Bluetooth Card has been in Discoverable mode for a long time. This mode requires a lot of battery power and should be turned off whenever not needed. | Tap on the Bluetooth icon, then select My Bluetooth Device . Uncheck Discoverable . |

SYMPTOM:

- When I try to connect my Bluetooth phone and mobile computer, the phone thinks that I am using a different mobile computer that I previously paired with the phone.

| POSSIBLE REASONS | SOLUTION |
|--|---|
| The phone remembers the name and address of the mobile computer it last paired with via your Bluetooth Card. | Manually delete the pairing device and name from your phone. Refer to your phone's user documentation for instructions. |

SYMPTOM:

- I can't make my Ericsson R520 phone discoverable.

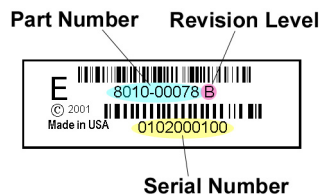
| POSSIBLE REASONS | SOLUTION |
|---|--|
| You attempted to bond, with the phone, and when the phone presented a "pairing query," you entered No. This prevents the phone from being discoverable until it is reset. | Reset the phone by removing its battery. |

Appendix D Technical Support

If you have trouble installing or using the Bluetooth Card, please refer to the “Troubleshooting” section. You can also visit Socket’s online forum for users to discuss technical support and other issues with each other at: www.socketforum.com

If problems persist, contact Socket’s technical support department prepared with the following information:

- The part number (including revision level) and serial number of your Bluetooth Card. See the diagram below.
- The manufacturer, model number, and Windows CE version of your mobile computer
- If applicable, the manufacturer, model number, and/or network carrier of the Bluetooth-enabled device you are trying to connect to
- What you did to try to correct the problem



To reach Socket’s technical support department:

- Visit www.socketcom.com/support/index.htm
- Email techsupport@socketcom.com
- Phone 510-744-2720
- Fax 510-744-2727

Please refrain from disassembling the CompactFlash card. Disassembly of this device will void the product warranty.

Limited Warranty

Socket Communications Incorporated (Socket) warrants this product against defects in material and workmanship, under normal use and service, for the following period from the date of purchase:

Plug-in card: Three years

Incompatibility is not a defect covered by Socket's warranty. During the warranty period, Socket will, at its option, repair or replace the defective product at no charge when furnished with proof of retail purchase, provided that you deliver the product to Socket or to an authorized Socket Service Center.

The returned product must be accompanied by a return material authorization (RMA) number issued by Socket or by Socket's Authorized Service Center. If you ship the product, you must use the original container or equivalent and you must pay the shipping charges to Socket. Socket will pay shipping charges back to any location in the contiguous United States. This warranty applies only to the original retail purchaser and is not transferable.

Socket may, at its option, replace or repair the product with new or reconditioned parts and the returned product becomes Socket's property. Socket warrants the repaired or replaced products to be free from defects in material or workmanship for ninety (90) days after the return shipping date, or for the duration of the original warranty period, whichever is greater.

This warranty does not cover the replacement of products damaged by abuse, accident, misuse or misapplication, nor as a result of service or modification other than by Socket.

SOCKET IS NOT RESPONSIBLE FOR INCIDENTAL OR CONSEQUENTIAL DAMAGES RESULTING FROM BREACH OF ANY EXPRESS OR IMPLIED WARRANTY, INCLUDING DAMAGE TO PROPERTY AND, TO THE EXTENT PERMITTED BY LAW, DAMAGES FOR PERSONAL INJURY. THIS WARRANTY IS IN LIEU OF ALL OTHER WARRANTIES INCLUDING IMPLIED WARRANTIES OF MERCHANTABILITY AND FITNESS FOR A PARTICULAR PURPOSE.

Some states do not allow limitation of implied warranties, or the exclusion or limitation of incidental or consequential damages, so that the above limitations or exclusions may not apply to you. This warranty gives you specific legal rights and you may also have other rights which vary from state to state.

This product may contain fully tested, recycled parts, warranted as if new.

For warranty information, phone (510) 744-2700.

Limited Software Warranty

LIMITED WARRANTY. SOCKET warrants that the original disk or CD ROM is free from defects for 90 days from the date of delivery of the SOFTWARE.

CUSTOMER REMEDIES. SOCKET'S entire liability and your exclusive remedy shall be, at SOCKET'S option, either (a) return of the price paid or (b) replacement of the SOFTWARE which does not meet SOCKET'S Limited Warranty and which is returned to SOCKET with a copy of your receipt. Any replacement SOFTWARE will be warranted for the remainder of the original warranty period or 30 days, whichever is longer. THESE REMEDIES ARE NOT AVAILABLE OUTSIDE OF THE UNITED STATES OF AMERICA.

NO OTHER WARRANTIES. SOCKET disclaims all other warranties, either express or implied, including but not limited to implied warranties of merchantability and fitness for a particular purpose, with respect to the SOFTWARE and the accompanying written materials. This limited warranty gives you specific legal rights. You may have others which vary from state to state.

NO LIABILITY FOR CONSEQUENTIAL DAMAGES. In no event shall SOCKET or its suppliers be liable for any damages whatsoever (including, without limitation, damages for loss of business profits, business interruption, loss of business information, or other pecuniary loss) arising out of the use of or inability to use the SOFTWARE, even if SOCKET has been advised of the possibility of such damages. Because some states do not allow the exclusion or limitation of liability for consequential or incidental damages, the above limitation may not apply to you.

EXPORT LAW ASSURANCES. You may not use or otherwise export or reexport the SOFTWARE except as authorized by United States law and laws of the jurisdiction in which the SOFTWARE was obtained. In particular, but without limitation, none of the SOFTWARE may be used or otherwise exported or reexported (a) into (or to a national or resident of) a United States embargoed country or (b) to anyone on the U.S. Treasury Department's list of Specially Designated Nationals or the U.S. Department of Commerce's Table of Denial Orders. By using the SOFTWARE, you represent and warrant that you are not located in, under control of, or a national or resident of any such country or on any such list.

GOVERNMENT END USERS. If the SOFTWARE is supplied to the U. S. Government, the SOFTWARE is classified as "restricted computer software" as defined in clause 52.227-19 of the FAR. The U. S. Government's rights to the SOFTWARE are as provided in clause 52.227-19 of the FAR.

CONTROLLING LAW AND SEVERABILITY. This License shall be governed by the laws of the United States and the State of California. If for any reason a court of competent jurisdiction finds any provision, or portion thereof, to be unenforceable, the remainder of this License shall continue in full force and effect.

Copyright Notice

Copyright © 2002 Socket Communications, Inc. All rights reserved.

Socket, the Socket logo and Mobility Friendly are registered trademarks of Socket Communications, Inc. Bluetooth Card is a trademark of Socket Communications, Inc. Bluetooth and the Bluetooth logos are trademarks owned by Bluetooth SIG, Inc., U.S.A. and licensed to Socket Communications, Inc. All other brand and product names are trademarks of their respective holders.

The Bluetooth Card includes technology licensed under United States Patent Nos. 4,543,450, 4,603,320, 4,686,506, and 4,972,470.

Reproduction of the contents of this manual without the permission of Socket Communications is expressly prohibited. Please be aware that the products described in this manual may change without notice.

Feel free to contact SOCKET COMMUNICATIONS at:

Socket Communications, Inc.

37400 Central Court
Newark, CA 94560

Phone: (510) 744-2700
Fax: (510) 744-2727

Other than the above, Socket Communications can assume no responsibility for anything resulting from the application of information contained in this manual.

Socket Communications requests that you refrain from any applications of the Socket Bluetooth Card that are not described in this manual. Socket Communications also requests that you refrain from disassembling the Bluetooth Card. Disassembly of this device will void the product warranty.

You can track new product releases, software updates and technical bulletins by visiting Socket's web page at: www.socketcom.com.

Regulatory Compliance

The Socket Bluetooth Card is designed to be compliant with the rules and regulations in locations where they are sold and will be labeled as required. This product is type approved — users are not required to obtain license or authorization before using.

Radio Frequency Interference Requirements

This device complies with part 15 of the FCC rules. Operation is subject to the following conditions: (1) This device may not cause harmful interference, and (2) this device must accept any interference received, including interference that may cause undesired operation.

This equipment is also ETS 300 328, ETS 300 826 and C-TICK compliant. These limits are designed to provide reasonable protection against harmful interference when the equipment is operated in a commercial environment.

This equipment generates, uses, and can radiate radio frequency energy and, if not installed and used in accordance with the instruction manual, may cause harmful interference to radio communications. Operation of this equipment in a residential area is likely to cause harmful interference, in which case the user will be required to correct the interference at his or her own expense.

This equipment generates and radiates radio-frequency energy. To comply with FCC RF exposure compliance requirements, the following antenna installation and device operating configurations must be satisfied: (1) Users are not permitted to make changes or modify the system in any way, and (2) connecting external antennas to the card is prohibited. This device and its antenna must not be co-located or operated with any other antenna or transmitter.

If this equipment does cause harmful interference to radio or television reception, which can be determined by turning the equipment off and on, the user may try to correct the interference by one or more of the following measures:

- Reorient or relocate the receiving antenna of the radio or television.
- Increase the distance separating the equipment and the receiver.
- Connect the equipment to an outlet on a different branch circuit than that of the receiver.
- Consult the dealer or an experienced radio/TV technician for help.

The user may find the following booklet helpful: *How to Identify and Resolve Radio-TV Interference Problems*. This booklet is available from the U.S. Government Printing Office, Washington, D.C. 20402.

Radio Frequency Interference Requirements – Canada

This Class B digital apparatus meets the requirements of the Canadian Interference-Causing Equipment Regulations. Cet appareil numérique de la Classe B respecte toutes les exigences du Règlement sur le Matériel Brouilleur du Canada.

NOTE: To comply with FCC and Industry Canada exposure requirements, this device is approved for operations in a user's hand when there is a distance of 20 cm or more between the device antenna and the user's body.

CE Marking & European Union Compliance

Products intended for sale within the European Union are marked with a CEMark which indicates compliance to applicable Directives and European Normes (EN), as follows. Amendments to these Directives or ENs are included: Normes (EN), as follows:

Applicable Directives:

- Electromagnetic Compatibility Directive 89/336/EEC
- Low Voltage Directive 73/23/EEC

Applicable Standards:

- EN 55 022 – Limits and Methods of Measurement of Radio Interference Characteristics of Information Technology Equipment.
- EN 50 082-1 – Electromagnetic Compatibility – General Immunity Standard, Part 1: Residential, Commercial, Light Industry.
- IEC 801.2 – Electromagnetic Compatibility for Industrial Process Measurement and Control Equipment, Part 2: Electrostatic Discharge Requirements.
- IEC 801.3 – Electromagnetic Compatibility for Industrial Process Measurement and Control Equipment, Part 3: Radiated Electromagnetic Field Requirements.
- IEC 801.4 - Electromagnetic Compatibility for Industrial Process Measurement and Control Equipment, Part 4: Electrical Fast Transients Requirements.
- EN 60 950 + Amd 1 + Amd 2 – Safety of Information Technology Equipment Including Business Equipment.



6410-00171 E

Printed in U.S.A.