

TABLE OF CONTENTS

1	IMPORTANT SAFETY INSTRUCTIONS.....	1
2	SUMMARY OF FEATURES.....	1
3	INSTALLATION	2
	3.1 Ostia Application Installation	2
	3.2 Installing Maps.....	2
	3.2.1 Map Preparation.....	2
	3.2.2 Copying maps from the Desktop PC to the Pocket PC .	3
4	UNINSTALL OSTIA SOFTWARE	3
5	USING OSTIA	4
	5.1 Ostia Menus	5
	5.1.1 File	5
	5.1.2 Find	6
	5.1.3 View.....	10
	5.1.4 GPS	11
	5.1.5 Opt.....	12
	5.2 View Controls	13
6	TIPS ON GETTING STARTED	13
7	GPS (OPTIONAL).....	13
	7.1 Required components for Pocket PC Navigator System	13
	7.2 Installing the GPS	14
	7.3 Using the GPS.....	15
8	TROUBLESHOOTING	16
9	TECHNICAL SUPPORT	16
10	SYSTEM REQUIREMENTS	16
	10.1 Pocket PC/Handheld PC Requirements	16
	10.2 Desktop/Laptop Requirements.....	16

SECTION 1: Important Safety Instructions

For the safety of yourself and others, please observe the following safety requirements:

- **Do not** attempt to operate a Pocket PC Navigator system in a vehicle while the vehicle is in motion, or in any way that interferes with safe driving.
- **Secure** the iGPS receiver and Pocket PC to the vehicle in such a way as not to endanger the driver or passengers during driving or operation.
- **Do not** use the Pocket PC and Ostia in any area (country, state, city, etc.) that prohibits the use of electronic displays in motor vehicles.
- Navigation maps may contain errors and omissions or may be out-of-date with recent road changes or road conditions. **Please be attentive** to roadway signage, all posted roadway information, and the condition of the roads you are traveling.
- Routes generated by Ostia are only recommendations and are for personal and non-commercial use.
- Ostia software and the iGPS receiver may **not** be used for any purpose in which failure of the products could lead to personal injury, physical, or environmental damage.
- Pharos and its suppliers specifically disclaim any warranties, either express or implied, for their products' fitness for use in any high-risk activities.

SECTION 2: Summary of Features

- Compatible with CompactFlash GPS receiver (NMEA-0183)
- Detailed street level mapping data.
- Mapping features include: location by address, intersection, location of area points of interest or waypoint saved by user previously.
- Calculating route from one location to another, or selection of a street location on the map.
- Opening up to 10 maps at a time.
- Driving directions and route guidance.
- Tapping the street on the map to show the street name.
- Zoom in and zoom out with stylus.
- Creating a user waypoint database.
- GPS status indicators.
- Simulating car navigation.
- When navigating with the iGPS receiver:
 - Display the street name of the next turn at the bottom of screen.
 - Show the distance to the next turn.
 - Voice prompt for reliable route guidance.
 - Second prompt before a turn or highway entrance/exit.
 - Auto zoom-in before the turn or highway entrance/exit and zoom-out after.
 - Use of the iGPS receiver position as the point of origin.
 - A one-touch Re-route button.
 - Navigation data such as speed, longitude, latitude, local time and direction of travel.
 - Auto re-route option.



3.2.2 Copying maps from the Desktop PC to your Pocket PC.

1. Make sure your Pocket PC is in its sync cradle and is attached to your PC.
2. Double click My Computer → C:\ → PharosMaps folder
3. In the PharosMaps folder you should see 2 files with the name of the region you just uncompressed. Both the .rmf and .inx file will need to be transferred to the

SECTION 5: Using Ostia

To start the Ostia program, click the Start → Programs → Ostia. Your Pocket PC may also provide additional methods of running programs, such as a special menu window.

Information/instructions provided in this section can also be found in your Pocket PC help menu after Ostia is started. To read the help menu, please click the Start

icon  on your Pocket PC window, and then click  Help.

When the Ostia program is started for the first time, several start-up screens will appear including the following:



This screen will allow you to choose which GPS receiver you will be using and have the Ostia software automatically configure itself to work with that GPS receiver.

Note: This screen will automatically appear only on the first time Ostia is opened. If you need to view this screen again, it is located in the GPS Menu under Setup. ([See Section 5.14](#))

5.1 Ostia Menus

The Ostia menu band consists of several parts: The main menu (File, Find, View, GPS and Option), and the GPS indicator. As shown in Figure 4.

The GPS indicator has three changeable faces to indicate the different operating status of the receiver. By clicking the indicator you can get more information.

Blue arrow keys on the map allow you to shift the viewable portion of map currently open.

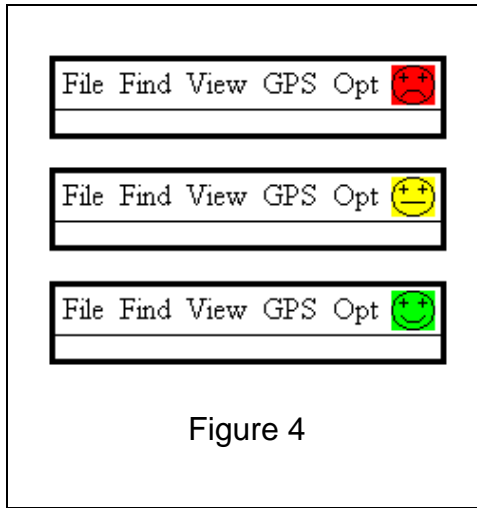
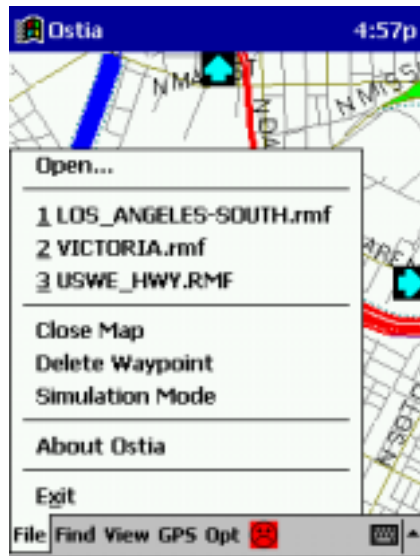


Figure 4

The red sad-face of the indicator tells that the receiver is either not powered properly or not enabled (top, Figure 4); the yellow calm-face shows that the receiver is in the process of determining your position (middle, Figure 4) and the green happy-face shows that the receiver is successfully tracking the position. (bottom, Figure 4). The menu items are described in the following tables.



5.1.1 File

File Menu Items	Description
Open	<p>Select this item to open a map file. The Open command displays a list of all available maps.</p> <p>Tap the file name that you want to open. Repeat the same steps to open additional maps. You can open up to ten maps at a time. Below the “Open” menu item is listed the last 3 most recent maps</p>

	that were opened.
Close Map	Close opened map(s), clearing screen and settings.
Delete Waypoint	Delete waypoint item(s) from the database. Select an item then press Delete to delete the item. Press Finish to complete the delete process and close the window. Press Cancel to delete none of the waypoints and quit the delete process and close window.
Simulation Mode	Simulating car navigation based on given route. Note: Before activating Simulation Mode, verify that "Enable GPS" option is not checked.
About Ostia	Displays a window showing the current version of Ostia software installed on your Pocket PC.
Exit	Quit Ostia. Note: tapping Ctrl-q will also Quit Ostia.



5.1.2 Find

Note: you must have a map file currently open to select this menu item!

Find Menu Items	Description
Address	Select this menu item to locate a street containing a specified address on the currently opened map file. Selecting an address is an easy 4 (four)-step

	<p>process.</p> <ol style="list-style-type: none"> 1. On the <u>Street Lookup</u> screen, type the first several numbers (not address numbers such as 1234 “B” street but numbered street names such as 2nd street) and/or letters of a desired street name. A list of closely related street names will appear in the scrollable window. Select the desired street name, then press Next to proceed to step 2. 2. On the <u>Lookup City</u> screen, the steps are similar to Step 1. Select the desired city, county, township, etc. You have the option to select a specific zip code or just by city name. Press Next to proceed to step 3. 3. All possible addresses belonging to the desired street segments are displayed. Type the address digits to find the desired address range and then select it. Press Finish to proceed to step 4. <p>Note: The numbers listed are either odd or even sets of numbers according to the specific side of the street on which they appear. This is essential for accuracy on divided roads and one-way streets.</p> <ol style="list-style-type: none"> 4. Specify if the location is an Origin or Destination. If you want to save the location to the waypoint database, check the save-option box and give a waypoint name up to 50 letters. <p>The selected street segment will be displayed in Green if an origin or Red if a destination.</p> <p>Note: To modify a previous selection, press the Back button.</p>
<p>Intersection</p>	<p>Select this menu item to locate a street intersection on the currently opened map.</p> <p>Selecting an intersection is an easy 4 (four)-step process.</p> <ol style="list-style-type: none"> 1. On the <u>Street Lookup</u> screen, type the first several numbers and/or letters of a desired street name. A list of closely related street names will appear in the scrollable window. Select the desired street name, then press Next to proceed to step 2. 2. Select a city, county, township, etc... from the list of offered names. You have the option to select a specific zip code or just city name.

	<p>Press Next to proceed to step 3.</p> <p>3. All possible street crossings are listed. Make a selection and press Finish to proceed to step 4.</p> <p>4. Specify if the intersection is an Origin or Destination. If you want to save the location to the waypoint database, check the save-option box and give a waypoint name up to 50 letters.</p> <p>The selected intersection will be displayed in Green if an origin or Red if a destination.</p> <p>Note: To modify a previous selection, press the Back button.</p>
Point of Interest	<p>Select this menu item to find a point of interest on the currently opened map. Note, many points of interest are not on a street, you may have to use the closest intersection for routing purposes.</p> <p>Selecting a point of interest is an easy 3 (three)-step process.</p> <p>1. Select a category of point of interest from the scrollable list, then press Next to proceed to step 2.</p> <p>2. Select the desired point of interest. Press Finish to proceed to step 3.</p> <p>3. Specify if the location is an Origin or Destination. If you need to save the location to the waypoint database, check the save-option box and give a waypoint name up to 50 letters.</p> <p>The selected point of interest is marked and its nearest road segment or intersection will be displayed in Green if an origin or Red if a destination.</p> <p>Note: To modify a previous selection, press the Back button.</p>
Waypoint	<p>Select this menu item to find a waypoint from the previously stored database.</p> <p>Selecting a waypoint is an easy 2 (two)-step process.</p> <p>1. On the <u>Waypoint List</u> screen type the first several numbers and/or letters of a desired waypoint name. A list of closely related waypoint names will appear in the scrollable window. Select the desired waypoint name, then press Finish to proceed to step 2.</p>

	<p>2. Specify if the waypoint location is an Origin or Destination.</p> <p>The selected waypoint location will be displayed in Green if an origin or Red if a destination</p> <p>Note: The save-option check box is disabled.</p>
<p>New Route</p>	<p>Select this menu item to display a new route starting at the origin and ending at the destination. Before this menu item is active, both the origin and destination must be defined. When the iGPS receiver is connected and "Enable GPS" is checked, the iGPS position will be the point of origin.</p> <ol style="list-style-type: none"> 1. The Origin is shown as a green line. 2. The Destination is shown as a red line. 3. The Route is shown as a blue path between origin and destination. <p>You can define the origin or the destination by double clicking the place on the map. The map scale is automatically adjusted so that the origin, route, and path are all visible.</p>
<p>Reverse Route</p>	<p>Select this menu item to switch the Origin and Destination of a calculated route.</p> <p>This will also recalculate the text turn-by-turn directions in the Directions screen in the View menu.</p> <p>Note: The reverse route may be different than the original route because of divided roads and one-way streets.</p>



5.1.3 View

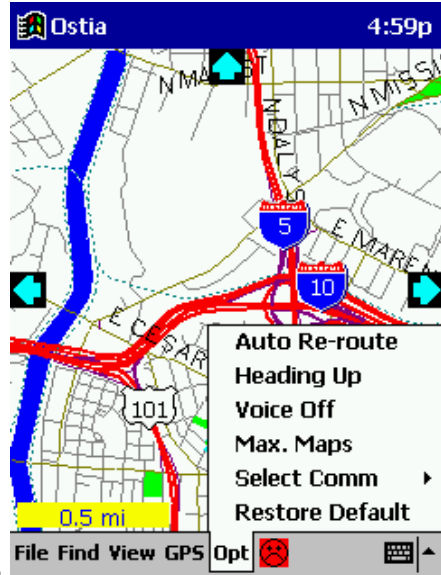
View Menu Items	Description
Full Map	Select this menu item to view the entire map currently open.
Destination	Select this menu item to display the currently defined destination. Selecting this function may change the map scale.
Origin	Select this menu item to display the currently defined origin. Selecting this function may change the map scale.
Full Route	Select this menu item to display the currently defined full route. Selecting this function may change the map scale.
Clear Route	Select this menu item to clear the currently defined full route. Note: Clearing the route also clears the origin and destination.
Direction	Select this menu item to display turn-by-turn driving directions in text format.
Map	Select this menu item to return to the map view.

Note: Destination, Origin and Full Route functions are valid only if “Enable GPS” is not checked.



5.1.4 GPS

<p>Enable GPS</p>	<p>Check this menu item to enable the GPS receiver.</p> <p>You should check it only when the iGPS receiver is properly connected to your Pocket PC. The GPS icon (a red arrow) will be displayed on the map indicating your current position. Uncheck Enable GPS will disable the GPS tracking function.</p>
<p>GPS Info.</p>	<p>Select this menu item to display the current direction, speed, longitude, latitude, local time and “vision” (line of sight) distance to the destination according to the received GPS data.</p>
<p>Sat. Info.</p>	<p>Select this menu item to display the locations of the GPS satellites serving your area. The top portion of the display shows a constellation view of nearby GPS satellites. The center of the circle is the zenith of your position. The bottom portion of the display shows the signal quality for each satellite.</p>
<p>Setup</p>	<p>Select this menu item to automatically configure the software to use either the iGPS-180 mobile receiver or the iGPS-CF portable receiver.</p>
<p>Map</p>	<p>Select this menu item to return to the view of the map(s) that are currently open.</p>



5.1.5 Options

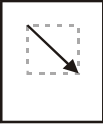

Auto Re-route	Select this menu item to have the program automatically re-route you when you travel off of the calculated route.
Heading Up	Select this menu item to change the orientation of the map. With Heading Up selected, the map will be oriented so that in general, your position indicator is moving towards the top of the screen. With Heading Up not selected, the map is oriented so that North is always at the top of the screen.
Voice Off	Select this menu item to turn the Voice Prompt on/off.
Max. Maps	Select this menu item to set the maximum amount of maps you can open at the same time. A maximum of 10 maps can be set in this option. Depending on your device the more maps that are open may affect the processor speed.
Select Comm.	Select this menu item to manually set the communication port the software is to read the GPS receiver on.
Restore Default	Select this menu item to restore the GPS settings back to the original.

One Touch Re-Route: If you find yourself off-route (voice prompts will let you know that you are off-route while you are traveling), simply push the **Action Button*** on your Pocket PC to calculate a new route from your current location to the destination.

*Note: The **Action Button** may differ from one Pocket PC to another.

5.2 View controls

Here are some tips for controlling map viewing. You may find other techniques unique to your Pocket PC that allows you to change the current map view.

<p>Zoom In</p> 	<p>View a smaller section of the map with more detail.</p>	<p>To zoom in for a more detailed view, use your stylus to draw a rectangle on the map (from upper left to lower right). A best-fit scale is used to display the enclosed rectangular area on your Pocket PC screen.</p>
<p>Zoom Out</p> 	<p>View a larger section of the map with less detail.</p>	<p>To zoom out, use your pointing device to make a line from lower left to upper right.</p>

SECTION 6: Tips on Getting Started

Try the following exercise to develop and practice your map skills

- Set your home as a route origin.
- Set the nearest friend's home as a route destination.
- Find the route between your home and friend's home
- Enable **Simulation Mode** to experience car navigation virtually.

SECTION 7: GPS (optional)

Two ultra compact, lightweight, integrated types of GPS receiver (iGPS-180 and iGPS-CF) are available from Pharos as an option. The iGPS receivers feature rapid positioning, instant reacquisition, low power consumption, and a water resistant enclosure.

7.1 Required Components for a Pocket PC Navigator System

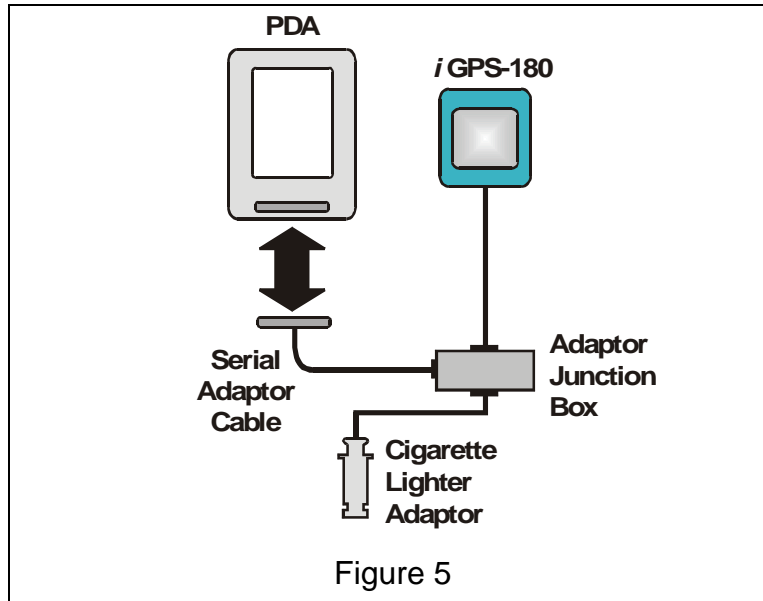
- Windows CE based Pocket PC or Handheld PC
- Ostia Software
- iGPS receiver *

*The iGPS receiver PocketPak and instructions are available in kit form for most models of Windows CE based Pocket PC's. See your dealer or our website (<http://www.pharosgps.com>) for details.

7.2 Installing GPS

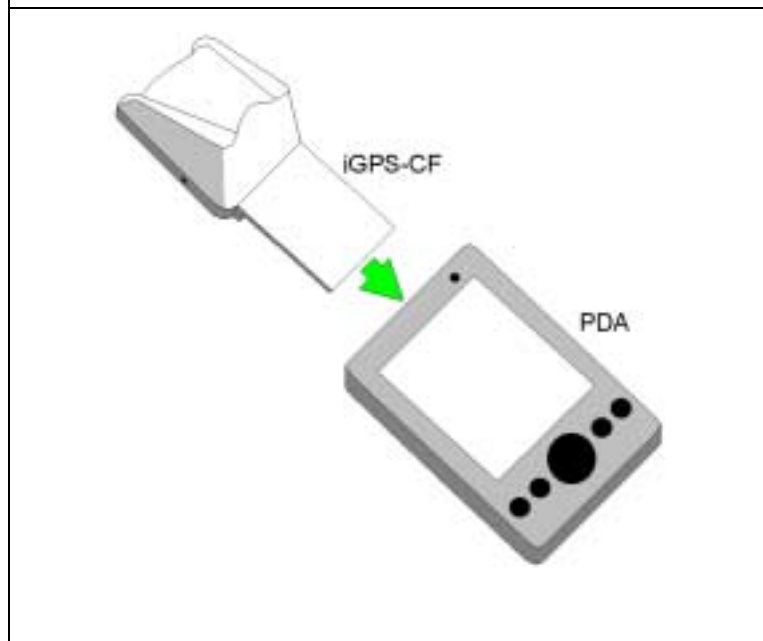
iGPS-180

1. Place the iGPS-180 receiver on the dashboard of the vehicle close to the windshield.
2. Plug the cigarette lighter adaptor into the lighter socket of your vehicle.
3. Plug the serial adaptor cable into the Pocket PC's serial port socket.



iGPS-CF

1. Insert the iGPS-CF into the Compact Flash Card port of the Pocket PC. If the Pocket PC has a PCMCIA port, attach the PCMCIA adapter to the iGPS-CF and insert it into the port.



6. Handle the MMCX connector carefully (hold the metal part not the cable) when plug or unplug the active antenna.
7. Do not leave the unit under the sun for a long period of time.
8. iGPS-CF™ receiver's performance may be affected by:
 - a. Tinted metallic windows
 - b. Under high raised buildings, bridges, or in tunnels
 - c. Near high voltage cables, CB radios, or radio base stations
 - d. CD ROM player
 - e. Solar flare activities

SECTION 8: Troubleshooting

See the Pharos website (<http://www.pharosgps.com>) for FAQ's, tips, troubleshooting and latest updates.

SECTION 9: Technical Support

Pharos Science and Applications, Inc.

<http://www.pharosgps.com>

411 Amapola Avenue, Torrance, CA 90501-1478, USA

Phone: 310-212-7088

Fax: 310-320-1808

Email: support@pharosgps.com

Telephone technical support is available Monday through Friday between the hours of 9:00 AM to 5:00 PM Pacific Standard Time.

SECTION 10: System Requirements

10.1 Pocket PC/Handheld PC Requirements

Processor Type: MIPS, SH3, StrongArm

Operating System: Windows CE Version 2.11 or later

Memory: 2.5 MB

Compact Flash card or Multimedia card memory: 20 MB minimum

10.2 Desktop/Laptop Requirements

CPU: Pentium class

Operating System: Windows 95/98/ME/NT/2000

Available hard drive space: 20 MB minimum for map installation to PDA. Ostia maps vary in size from less than 1 MB to as large as 22 MB. The

Ostia Continental USA maps are made up of 260 map segments, separated into geographical and municipality boundary divided sections.