



www.macromgps.com



Navix 3.5

**USER MANUAL
REV 1.1**

CONTENTS

INTRODUCTION	3
PRECAUTIONS AND INSTRUCTIONS	3
REGISTERED TRADEMARKS	4
BEFORE STARTING	5
NAVIGATOR CONTROLS.....	5
USE OF THE NAVIGATOR	6
MEMORY CARDS	7
GETTING STARTED	9
MAIN FUNCTIONS.....	12
SOFTWARE INSTALLATION AND ACTIVATION	16
INSTALLATION PROCEDURE.....	16
ACTIVATION PROCEDURE	16
TROUBLESHOOTING AND MAINTENANCE	17
TROUBLESHOOTING	17
MAINTENANCE	18
SAFETY INSTRUCTIONS	19
CONFORMITY TO EUROPEAN UNION REGULATIONS	19

INTRODUCTION

Dear Customer, thank you for choosing a MACROM portable GPS navigator. Your MACROM GPS navigator has been designed and constructed with the greatest care and attention; for this reason, we advise you to read carefully the instructions in the following pages to keep the navigator safe and in its original working order.

PRECAUTIONS AND INSTRUCTIONS

- § The navigator is not waterproof.
- § Do not leave the navigator on the dashboard exposed to sunlight; overheating of the battery may cause malfunction and permanent damage.
- § Use the navigator with care: do not operate the controls of the navigator while driving.
- § The GPS navigator is an instrument to aid navigation; therefore it does not give precise measurements of direction, distance, position or topography.
- § The route calculated by the navigator is only intended for reference, and does not exempt the driver of the vehicle from observing road signs or the highway code.
- § The GPS (Global Positioning System) is a system operated by the government of the United States, which has sole responsibility for its functioning. Any modification to the GPS may therefore affect the functioning of the navigator.
- § The signals from GPS satellites are attenuated when they pass through solid materials; consequently, the navigator will not function correctly inside tunnels, underground car parks, buildings or in vehicles with screened windows.
- § The navigator must receive signals from the GPS satellites in order to determine its position. Signal reception may be affected by specific situations like the presence of physical obstacles (e.g. trees or very high buildings) or bad weather.
- § Devices operating at radio frequencies may interfere with reception of signals from GPS satellites or cause unstable reception.
- § To use the navigator in a car you are advised to utilise the suction support supplied, which must be positioned according to the instructions shown in the figure below.



REGISTERED TRADEMARKS

All the registered trademarks and brand names appearing in this manual are, without limitation, within the bounds of international law on registered trademarks and belong to their respective owners. All trademarks, trade names, or names of companies appearing in this manual are or could be registered trademarks or trade names and hence the property of a company. All rights which have not been explicitly agreed are reserved. If the respective distinguishing marks for trade names and trademarks appearing in this manual are missing then it should not be supposed that the trademarks are not registered or free from rights of third parties.

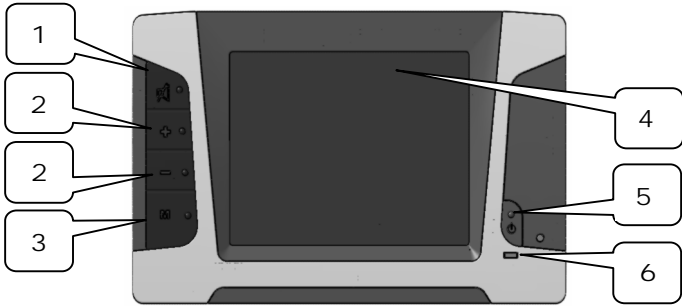
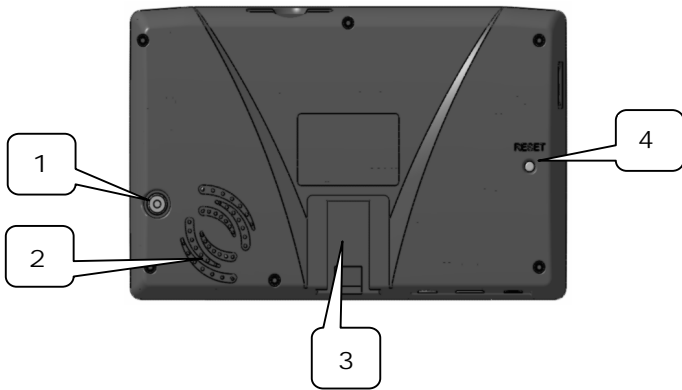

Windows is a trademark of the Microsoft Corporation®.

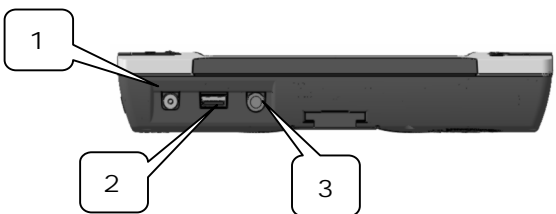
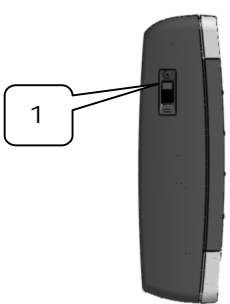
Note

LCT Infotelematics pursues a policy of continuous improvement in its product development: data and information found in the manual could be modified at any time without warning. For updates and changes to this manual and the maps, the User should refer to www.macromgps.com. This document contains information which is covered by intellectual and industrial property rights of LCT Infotelematics and/or third parties. All reproduction of this document, or part of it, for any purpose, is prohibited. It is also prohibited to transmit or send or photocopy or record this document by any means, electronic or mechanical. LCT Infotelematics does not guarantee the accuracy of the map data contained in this product and declines all explicit, implicit or legal responsibility.

BEFORE STARTING

NAVIGATOR CONTROLS

<p>FRONT PANEL</p> 	<p>(1) Mute button: to activate or deactivate the navigator's sound quickly.</p> <p>(2) Zoom buttons +/-: to change the zoom level of the map.</p> <p>(3) Perspective button: to change the way you see the map.</p> <p>(4) Touch Screen: touch the screen to select commands and enter text.</p> <p>(5) ON/OFF button: to turn the navigator on and off.</p> <p>(6) LED charge indicator: the light is red when charging and green when charging is complete.</p>
<p>REAR PANEL</p> 	<p>(1) Aerial connector: connector for an external GPS aerial.</p> <p>(2) Loudspeaker</p> <p>(3) Guide: to fix the navigator to the suction support.</p> <p>(4) Reset button: to restore the navigator's functions if there is a fault.</p>
<p>TOP PANEL</p> 	<p>(1) Slot for SD memory cards: socket for SD (Secure Digital) memory cards.</p>

<p>LOWER PANEL</p> 	<p>(1) Power connector: to connect the supplied AC mains (AC adapter) or car charger.</p> <p>(2) Mini-USB port: to connect to a computer using the supplied USB cable.</p> <p>(3) Audio connector: to connect stereo headphones.</p>
<p>LEFT PANEL</p> 	<p>(1) Battery switch: to disconnect the internal battery and preserve the charge if the device is not going to be used for a long period.</p>

USE OF THE NAVIGATOR

A suction support and car charger are included with your navigator. Fix the navigator on the windscreen, choosing the position carefully so as not to obstruct road visibility and cause danger. See the figure below.





To fix the suction support, place the sucker on the windscreen and press the lever, making sure that the seal is secure.

Then insert the navigator into the support.



To connect the charger, insert the terminal (1) into the connector on the navigator and terminal (2) into the car's cigar lighter socket.

Note

While in use, the car charger functions as a supply for the navigator and as a battery charger. Recharging is quicker when the navigator is turned off.

CAUTION: to protect the navigator from voltage surges, we recommend you connect the car charger only after starting the engine.

MEMORY CARDS



In the top panel of the navigator you will find a slot into which you can insert SD (Secure Digital) memory cards.

The navigator is supplied with an SD card containing navigation software and maps already installed and activated.

Remember that the SD card must be inserted in the slot in order for the navigator to work and must not be removed during use.

IMPORTANT: The memory card must be inserted in the slot with the label facing towards the rear of the navigator.

If it is necessary to remove the card, close all applications and turn off the navigator, then remove it from the socket by pressing lightly on the edge.



Navix 3.5

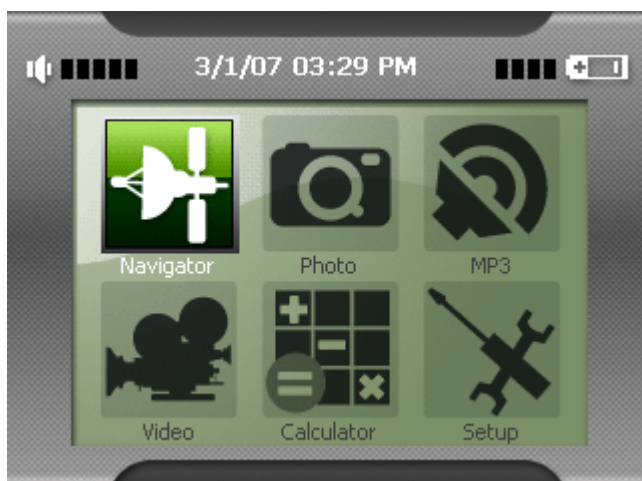
Powered by
**POCKET
DRIVER™**

Before inserting a new card, make sure the slot does not contain dust or extraneous objects. Keep the card in a safe place when not in use, avoiding exposure to dust and humidity. In order to avoid possible malfunctioning of the navigation software, we suggest that you do not save images or sound files on the SD supplied with the navigator. If the supplied SD is replaced with a new one, the navigation software must be re-installed using the CD/DVD supplied with the navigator. For more detailed instructions on installation, refer to the chapter SOFTWARE INSTALLATION AND ACTIVATION.

GETTING STARTED



Move the battery switch to the ON position and press the power button. The navigator starts and the Main Menu appears on the screen.



The upper bar of the Main Menu shows:


- \$ The audio volume
- \$ Date and time
- \$ Battery charge level

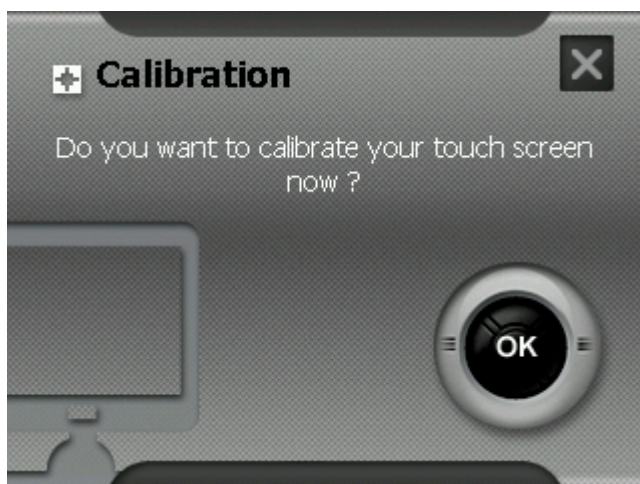
The icons in the Main Menu represent the available functions: Navigator, Photo, MP3, Video, Calculator and Setup.



To open the Setup Menu, press the Setup button on the Main Menu.

The Setup page allows you to adjust the sound volume, set the language and calibrate the screen.

 <p>The Clock settings screen shows options for Time Zone, Date, and Time. The Time Zone is set to (GMT+01:00), the Date is 01/04/2006, and the Time is 10:29:14. An OK button is visible at the bottom right.</p>	<p>Press Clock to set the correct time zone, the date and the current time.</p> <p>Having made the necessary changes, press OK to confirm.</p>
 <p>The Volume settings screen shows a volume slider with a green bar indicating the current level. There are minus and plus buttons for adjustment. The 'Enable Keytone' option is checked with a green checkmark. An OK button is visible at the bottom right.</p>	<p>Press the Volume button.</p> <p>Adjust the volume to the desired level by tapping the + and – keys.</p> <p>Press OK to confirm and return to the Setup Menu.</p>
 <p>The Language settings screen shows a language selection bar with 'English' selected. There are left and right arrow buttons for navigation. An OK button is visible at the bottom right.</p>	<p>Press the Language key to set the system language.</p> <p>After selecting the language by pressing the arrows, select OK.</p>



To calibrate the screen, select the button Calibration and then OK to confirm.

Touch the cross-wire with the pen and keep it pressed lightly on the screen. Repeat the operation following the indications and touch the screen again to complete the calibration.

MAIN FUNCTIONS



You can access the functions represented by the icons by opening the Main Menu.



Pressing the Navigator button starts the navigation software.

For instructions on the use of this application, refer to the User Manual of the Pocket Driver software, to be found on the installation CD/DVD.

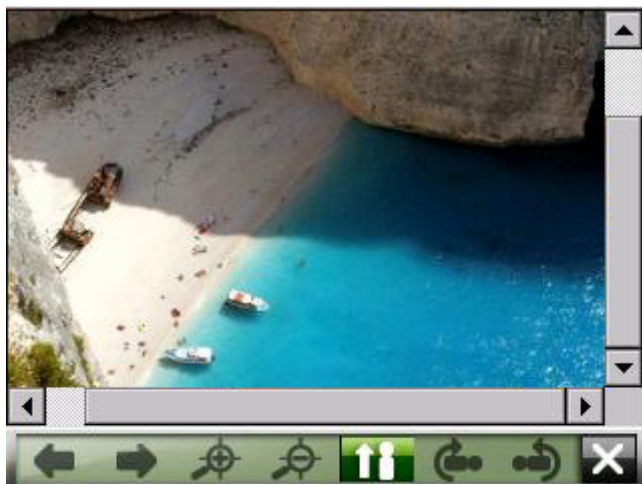
The latest version of the Manual can be found and downloaded from www.macromgps.com.



Start the image viewer by pressing the Photo button. The programme shows the folders on the memory card.

The buttons on the lower bar enable you to:

- Return to the folder one level up
- Return to the main folder
- Display sequentially all the images contained in the folder
- Display information about the application
- Close the application



Press on a folder containing image files and select the desired photo by tapping twice in rapid succession.

The buttons on the lower bar allow you to:

- Display the previous image
- Display the next image
- Zoom in
- Zoom out
- Return to the original orientation
- Rotate the image clockwise
- Rotate the image anti-clockwise
- Close the application



Start the MP3 player by pressing the MP3 button.

The upper part of the window contains the forward bar, the button to display information relating to the application and the button to turn the player off.



The buttons in the centre allow you to:

- increase and decrease the audio volume
- turn on and off the repeat mode for tracks
- turn on and off shuffle mode
- change the playlist



The buttons in the lower part allow you to return to the previous track, play, pause and skip to the next track.



You can edit the playlist by pressing the Playlist button.

The buttons on the right allow you to:

- Delete the playlist
- Add a track
- Delete a track from the playlist



Start the video player by pressing the Video button.



The buttons on the right allow you to:

- Close the application
- Display information about the video player
- Edit the playlist
- Full screen display
- Turn on and off the video repeat mode
- Increase and decrease the audio volume



The buttons on the lower bar allow you to return to the previous video, play, stop and skip to the next video.



You can change the list of videos by pressing the Playlist button.

The buttons on the right allow you to:

- Delete the playlist
- Add a video to the playlist
- Delete a selected video from the playlist



Start the calculator by pressing the Calculator button.

Press the X key to end the application and return to the Main Menu.

SOFTWARE INSTALLATION AND ACTIVATION

The navigator is supplied with an SD card containing navigation software and maps already installed and working. If the supplied SD is replaced with a new one, the navigation software must be re-installed using the CD/DVD supplied with the navigator.

INSTALLATION PROCEDURE


Insert the installation CD/DVD in the player on your PC. You may have to wait a few moments while the installation programme starts up automatically. If the programme does not start running, start the Setup.exe file, which is contained in the Macrom folder. Complete the installation following the programme instructions carefully.

ACTIVATION PROCEDURE

For instructions on the activation procedure, refer to the User Manual of the Pocket Driver, found on the installation CD/DVD.

TROUBLESHOOTING AND MAINTENANCE

If it ever becomes necessary, in the event the navigator fails to respond to buttons pressed on the screen, the system can be reset.

	<p>To carry out a system reset, press the Reset button, found on the rear panel of the navigator.</p>
---	---

Note: After a system reset the date, time, language and volume return to their factory settings.

TROUBLESHOOTING

PROBLEM		POSSIBLE SOLUTIONS
BATTERY	The navigator does not start.	<p>The battery level may be too low. Plug the charger into the navigator.</p> <p>The battery switch is in the O position. Move it to the I position.</p>
DISPLAY	The navigator is on but the screen is blank.	<p>Plug the charger into the navigator.</p> <p>If the screen remains blank, press the reset button.</p>
	If the system responds very slowly.	<p>Check the battery level.</p> <p>If the problem persists even though the battery is charged, press the reset button.</p>
	The screen stops responding.	Press the reset button.
	The selection of buttons and areas of the screen is not precise.	Re-calibrate the screen. Select the Calibration function from the Setup menu.

CONNECTIONS	Nothing happens when you connect to your PC.	<p>Check that the navigator and PC are switched on before connecting them.</p> <p>Check that the USB cable is correctly inserted in your PC, that the connection is direct and not through a USB hub.</p>
GPS	GPS reception is poor or insufficient.	<p>Check that the navigator is correctly positioned to receive signals from GPS satellites.</p> <p>GPS satellite signal reception may deteriorate when there are bad weather conditions, physical obstructions, screened windows and other radio frequency devices nearby.</p>

MAINTENANCE

To get optimum performance from your navigator and reduce the risk of damage and malfunctioning, we recommend you follow the advice below.

- § Remember that the navigator is not waterproof.
- § Do not expose the navigator to humidity or high temperatures.
- § Avoid exposing the navigator to direct sunlight for long periods.
- § Look after the screen carefully. Avoid dropping the navigator or allowing the screen to come into contact with objects which might damage it.
- § Do not subject the navigator to strong vibrations.
- § Do not expose the navigator to sudden changes in temperature.
- § To clean the screen, you must first turn the navigator off and use a soft, slightly dampened cloth.
- § Do not try to open, dismantle or repair the navigator. Any modification to the navigator will nullify the guarantee and may cause injury or damage, directly or indirectly, to persons or things.

SAFETY INSTRUCTIONS

Only use the charger supplied with the navigator to charge the battery. The use of other types of supply and adaptors may cause malfunctioning and be hazardous.

WARNING:

The navigator contains a lithium ion battery. To reduce the risk of fire or burning, do not dismantle, break, pierce or put into fire or water. The battery could explode and release poisonous chemicals.

Advice to people carrying out maintenance

Replacing the battery with one of a wrong type may cause explosion. For this reason the battery must only be replaced with one that is identical, or an equivalent recommended by the maker.

The batteries must be disposed of following the regulations on disposal which apply in your country.

CONFORMITY TO EUROPEAN UNION REGULATIONS

This product conforms to directives 2004/104/CE and ISO 7637-2.