

LOWRANCE®



Elite-5m HD

Operation manual

Copyright © 2013 Navico

All rights reserved.

Lowrance® and Navico® are registered trademarks of Navico.

Fishing Hot Spots® is a registered trademark of Fishing Hot Spots Inc.

Navionics® is a registered trademark of Navionics, Inc.

Navico may find it necessary to change or end our policies, regulations and special offers at any time. We reserve the right to do so without notice. All features and specifications subject to change without notice.

Compliance Statements

Lowrance Elite 5m HD

- meets the technical standards in accordance with Part 15.103 of the FCC rules
- complies with CE under RTTE directive 1999/5/EC
- complies with the requirements of level 2 devices of the Radiocommunications (Electromagnetic Compatibility) standard 2008

For more information please refer to our website: www.lowrance.com.

Warning

The user is cautioned that any changes or modifications not expressly approved by the party responsible for compliance could void the user's authority to operate the equipment. This equipment has been tested and found to comply with the limits for a Class B digital device, pursuant to Part 15 of the FCC rules. These limits are designed to provide reasonable protection against harmful interference in a residential installation. This equipment generates, uses and can radiate radio frequency energy and, if not installed and used in accordance with the instructions, may cause harmful interference to radio communications. However, there is no guarantee that the interference will not occur in a particular installation. If this equipment does cause harmful interference to radio or television reception, which can be determined by turning the equipment off and on, the user is encouraged to try to correct the interference by one or more of the following measures:

- Reorient or relocate the receiving antenna
- Increase the separation between the equipment and receiver
- Connect the equipment into an outlet on a circuit different from that of the receiver
- Consult the dealer or an experienced technician for help










WARNING: When a GPS unit is used in a vehicle, the vehicle operator is solely responsible for operating the vehicle in a safe manner. Vehicle operators must maintain full surveillance of all pertinent driving or boating conditions at all times. An accident or collision resulting in damage to property, personal injury or death could occur if the operator of a GPS-equipped vehicle fails to pay full attention to travel conditions and vehicle operation while the vehicle is in motion.

Table of contents

Introduction	4	Goto cursor.....	9
Unit Controls.....	4	Advanced Mode	9
Inserting microSD cards	5	Restore defaults	9
Basic Operation	6	Pages	10
Setup wizard.....	6	Steer Page.....	10
Page menus	6	Chart Page	10
Accessing the Settings menu	7	Overlay Data.....	11
Accessing menu items.....	7	Chart Operation	13
Working with menus	7	Chart Menu.....	13
Entering text	8	Waypoints, Routes, Trails.....	14
Cursor.....	8	Routes Screen.....	16

Trails Screen	19	Specifications	30
Orientation	21	Index	31
Chart Settings.....	22		
Overlay Data.....	22		
Settings.....	22		
Navigation Settings	24		
Settings	26		
Settings menu.....	26		
System.....	26		
Saving Screenshots.....	28		
Alarms	28		

Introduction

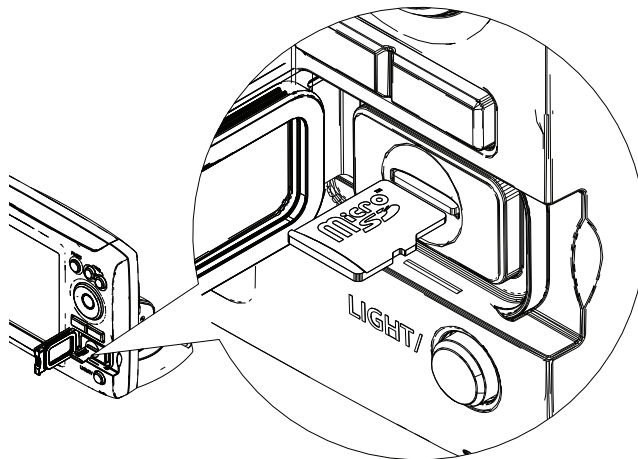
Unit Controls	
	LIGHT/POWER: controls backlight level and turns unit on/off
	KEYPAD: controls cursor & selects items on menus
	PAGES: allows you to select a page to view
	MENU: opens settings, context and page menus
	ENTER: finalizes menu selections; save waypoint at cursor position
	MOB: press and hold both Zoom keys to create a Man Overboard waypoint
	ZOOM KEYS: (+) used to zoom in; (-) used to zoom out
microSD slot: insert a blank microSD card to save screen captures, waypoints, routes and trails; or insert a microSD mapping card to use mapping data	

Getting Started	
Turn unit on/off	To turn on/off the unit, press and hold the LIGHT/POWER key for three seconds.
Man Overboard waypoint	Press the ZOOM IN and ZOOM OUT keys at the same time to set a Man Overboard waypoint. Your system will automatically create an active route back to the MOB waypoint. You must cancel navigation to terminate the function.
Adjusting the backlight	This unit has 11 backlight levels. Press the LIGHT/POWER key to switch backlight levels.
Muting Audio	Select <i>Audio</i> from the System menu. Select <i>Mute</i> and press ENTER .
Selecting a GPS source	Select <i>GPS</i> from the System settings menu. Press MENU , select <i>GPS source</i> and choose the desired source.

Inserting microSD cards

Carefully slide the microSD card into the slot until it clicks into place.

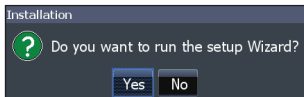
To remove, carefully push in the card until it clicks out of place.



Basic Operation

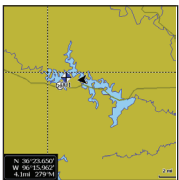
Setup wizard

The Setup wizard will appear when the unit is turned on for the first time. To choose your own settings, do not run the setup wizard. To restart the Setup wizard, restore defaults.



Pages

This unit has two pages: Steer and Chart. Press the pages key to switch pages.



Page menus

The Steer and Chart pages have menus that can only be accessed when those pages are displayed.

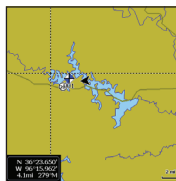


Chart page

MENU

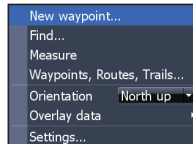
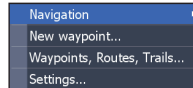


Chart menu



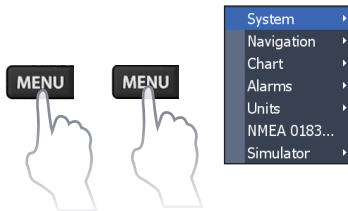
Steer page

MENU



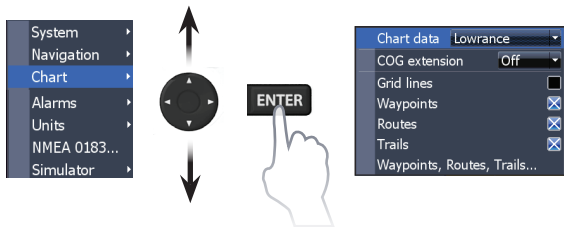
Steer menu

Accessing the Settings menu



Accessing menu items

The keypad and **ENTER** key are used to select menu items and open submenus. Use the keypad to highlight the desired item and press **ENTER**.



Working with menus

There are several menu types used to make adjustments to options and settings, including scrollbars, on/off features and dropdown menus.

Scrollbars

Select the scrollbar and press the keypad left (decrease) or right (increase).



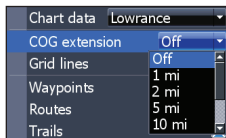
On/Off features

Select the on/off item and press **ENTER** to turn it on/off.



Dropdown menus

Select the dropdown menu and press the keypad up/down to select the desired item. Press **ENTER**.



NOTE: Press the **MENU** key to exit menus.

Dialogs

Dialogs are used for user input or for presenting information to the user. Depending on the type of information or entry, different methods are used to confirm, cancel or close the dialog.



Entering text

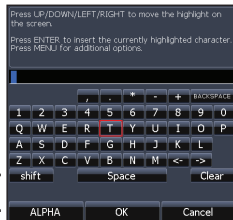
Some functions, like naming a waypoint, route or trail, will require you to input text.

To input text:

1. Use the keypad to select the desired character and press **ENTER**.
2. Repeat Step 1 for each character.
3. When entry is completed, highlight **OK** and press **ENTER**.

Switches letters to uppercase/lowercase

Switches keyboard between ALPHA and QWERTY layout



Cursor

The keypad moves the cursor around the display, allowing you to scroll the map and select map items.

Press **MENU** and select *Return to vessel* or *Exit cursor mode* to clear the cursor.

Goto cursor

Used to navigate to the cursor.

1. Move the cursor to a desired location and press **MENU**.
2. Select *Goto cursor* and press **ENTER**.

Advanced Mode

Enables advanced features and settings.

The following features are enabled when Advanced mode is turned on:

- Navigation (Enables arrival radius, off-course distance and Bearings setting)
- Alarms (Enables arrival, off course and anchor alarm options)
- NMEA 0183 configuration options
- Units (Enables distance, speed and bearings configuration options)

Standby mode

Lowers power consumption by turning off the display.

1. Press the **PWR/LIGHT** key to access the Back-light dialog.
2. Select *Standby* and press **ENTER**.
3. Press any key to resume normal operation.

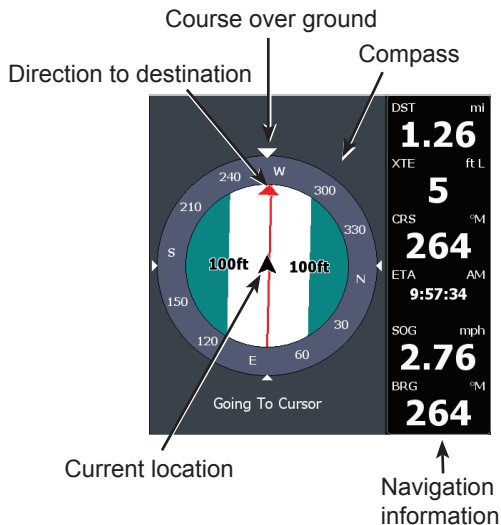


NOTE: *Leaving your unit in Standby mode when your motor is turned off will run down your battery.*

Restore defaults

Sets unit options and settings to default values.

Pages



Steer Page

The Steer page has a compass that shows your current track, the direction to your destination, and a digital data navigation panel.

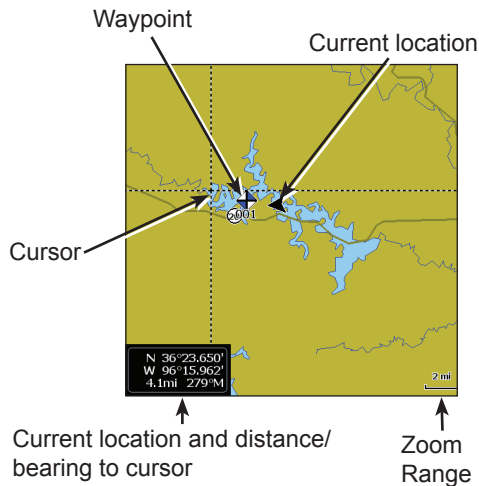
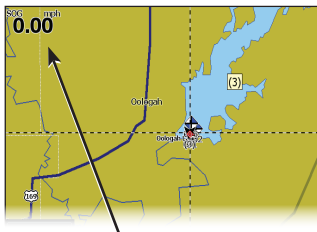


Chart Page

Consists of map that moves in real-time as you move. By default, the map is shown from a birds-eye view with North at the top of the screen.

Overlay Data

Used to select data shown on the Chart page.



Overlay data

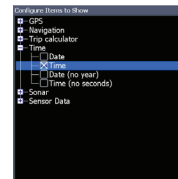
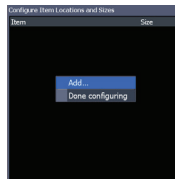
Show

Enables/disables the display of overlay data, allowing you to remove overlay data from the screen without deleting the current overlay data configuration.



Configure

Allows you to select/customize overlay data.



To add overlay data:

1. From the Chart page, press **MENU**.
2. Select *Overlay data* and press **ENTER**.
3. Select *Configure* and press **ENTER**.
4. Press *Menu* and select *Add*. Press **ENTER**.
5. Select a data category and press **ENTER**.
6. Select the desired data and press **ENTER**.
7. Repeat Steps 5 and 6 to add more data.
8. Press **MENU** and select *Return to Overlays*. Press **ENTER**.
9. Press **MENU**, select *Done Configuring* and press **ENTER**.

Customizing Overlay Data

You can select a data source, add/remove data and adjust the size and position of overlay data on the screen.

Select the desired overlay data from the “Configure Item Locations and Sizes dialog” and press **MENU**. The configuration menu will appear.

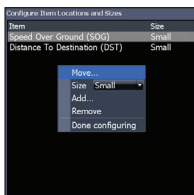


Chart Operation

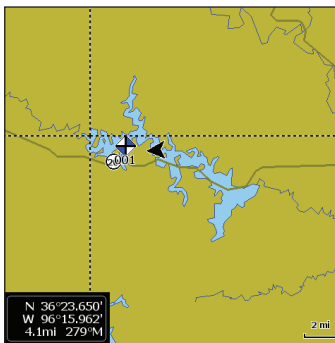
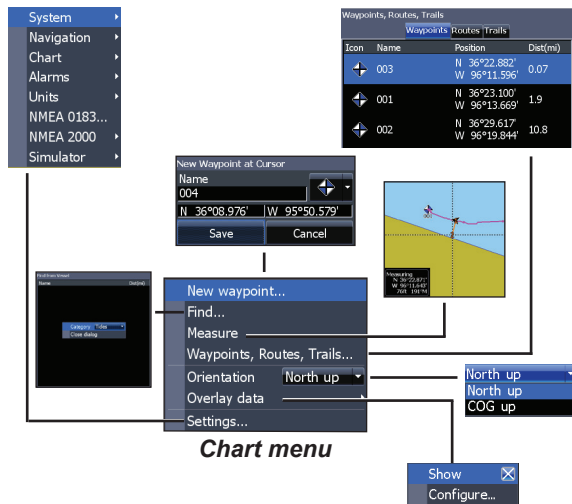


Chart Menu

Press **MENU** from the Chart page to open the Chart menu. Press **ENTER** to launch the New waypoint dialog.

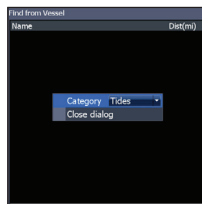


New Waypoint

Creates a waypoint at your current location or at the cursor position. When the cursor is on the screen, waypoints will be saved at the cursor position. If the cursor is not active, waypoints will be saved at your current position.

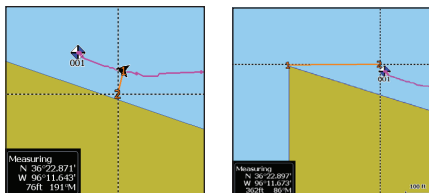
Find

Used to search for chart categories from the cursor position or from your current position.



Measure

The cursor can be used to measure the distance between two items on the chart.



To measure distance:

1. Select *Measure* and press **ENTER**.
2. Move the cursor to the desired location. The distance will be shown in the measuring dialog.

3. To measure from the cursor position to a new location, press **ENTER** and move the cursor to a new location.
4. To stop measuring, press **MENU** and select *Stop measuring*.

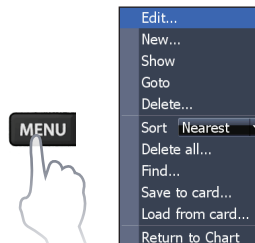
Waypoints, Routes, Trails

Used to create, edit, navigate and delete waypoints, routes and trails.

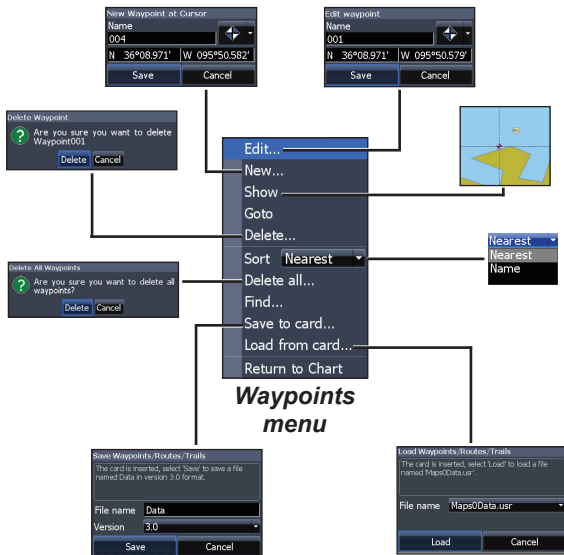
Press the keypad left/right to toggle between waypoints, routes and trails tabs.

Waypoints, Routes, Trails			
Waypoint's Routes Trails			
Icon	Name	Position	Dist(m)
+	003	N 36°22.882' W 96°11.596'	0.07
+	001	N 36°23.100' W 96°13.669'	1.9
+	002	N 36°29.617' W 96°19.844'	10.8

Waypoints Screen

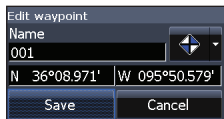


Waypoints menu



Edit

Allows you to edit the name, icon and latitude/longitude of a selected waypoint.



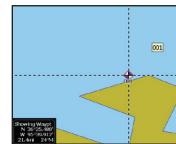
New

Creates a new waypoint at the cursor or vessel position. You can also select waypoint name, icon and latitude/longitude from the new waypoint dialog.



Show

Displays the selected waypoint on the map.

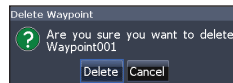


Goto

Allows you to navigate to a waypoint.

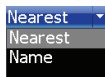
Delete and Delete All

Delete is used to delete a selected waypoint. Delete All deletes all waypoints.



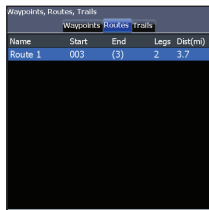
Sort

Controls how the waypoints list will be sorted — by name or by nearest.

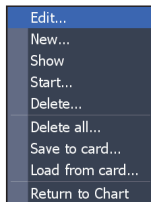


Routes Screen

Used to create, edit, navigate and delete routes. Use the keypad to highlight the Routes tab to access the Routes screen.



Routes screen



Routes menu

Creating a route

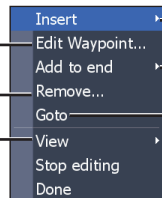
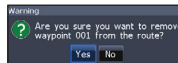
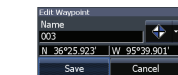
Routes can be created by inserting waypoints from the waypoints list or by using the cursor to position new points on the chart. You also can add waypoints to a route by selecting them from the chart screen.

Inserts waypoint between existing route waypoints

Waypoint from list...
Point using chart

Adds waypoint to end of the route

Waypoint from list...
Point using chart



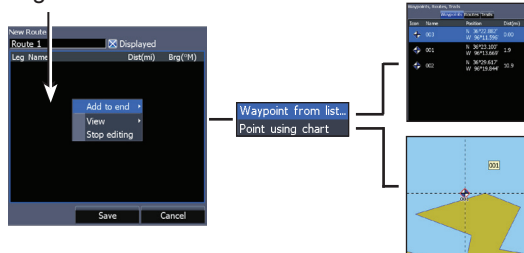
Route waypoint menu

Starts navigation to the selected route waypoint

To create a route from waypoint list:

1. Press **MENU** from the Routes screen.
2. Select *New...* and press **ENTER**.
3. Press the keypad down to select the Leg Name field and press **ENTER**.
4. Press **MENU**, select *Add to End* and press **ENTER**.

Leg Name field



5. Highlight *Waypoint from list* and press **ENTER**.
6. Select the desired waypoint and press **ENTER**.
7. Press **MENU** and select *Add to end* to add another waypoint to the route.
8. When the route is complete, press **MENU**, select *Stop Editing* and press **ENTER**.
9. Select *Save* and press **ENTER**.

Creating a route using points from chart:

1. Repeat Steps 1-4 from the instructions for Creating a route from waypoint list.
2. Select *Points using chart* and press **ENTER**. The chart page will appear.
3. Move the cursor to the desired location. Press **ENTER** to set a point.
4. Repeat Step 3 to add more points.
5. Press **MENU** and select *Stop adding*. Press **ENTER**.
6. Select *Save* and press **ENTER**.

Navigating a route

Routes can be navigated in forward or reverse.

1. Select the desired route on the Route screen and press **MENU**.
2. Select *Start* and press **ENTER**.

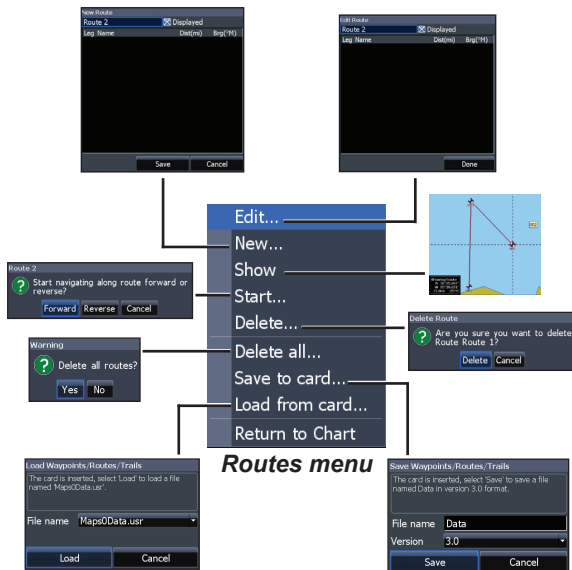
3. Select *Forward* or *Reverse* and press **ENTER**.
4. Press **MENU** and select *Return to Chart*. Press **ENTER**.

To cancel navigation:

1. Press *Menu* from the chart screen.
2. Select *Navigation* and press **ENTER**.
3. Highlight *Cancel* and press **ENTER**.
4. Select *Yes* and press **ENTER**.

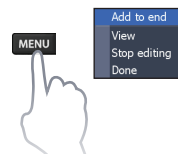
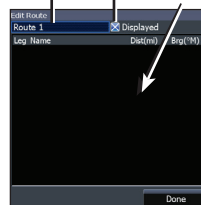
Edit and New Route dialogs

Used to edit/create routes, route names and to turn on/off the route display.



Displays/hides route on the map

To edit/create a route, use the keypad to select the Route Leg Name field and press **ENTER**.



To access the “Edit” or “New Route” dialog, select *Edit* or *New* on the Routes dialog and press **ENTER**.

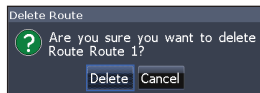
To finalize changes on the “Edit” or “New Route” dialogs, highlight the *Done* button and press **ENTER**.

Displayed

Used to show/hide a route on the display, which prevents the screen from being cluttered by too many routes.

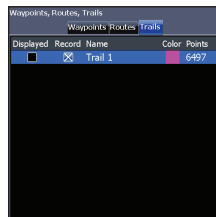
Delete and Delete All

Delete is used to delete individual routes. Delete All, removes all routes.

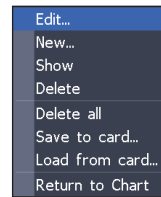


Trails Screen

Used to create, edit, navigate and delete trails. Use the keypad to highlight the Trails tab to access the Trails screen.



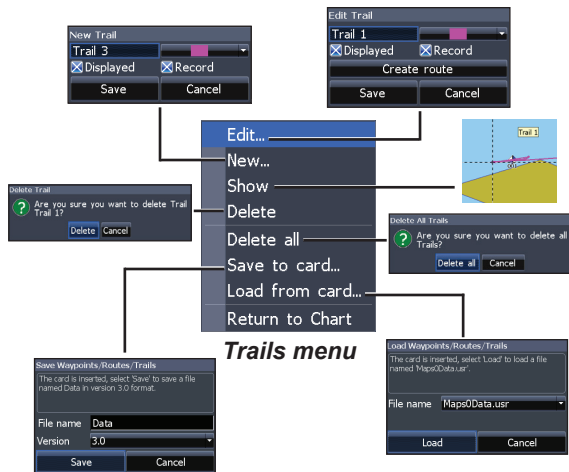
Trails screen



Trails menu

Creating trails

When creating a trail you can customize the trail name and color from the New Trail.

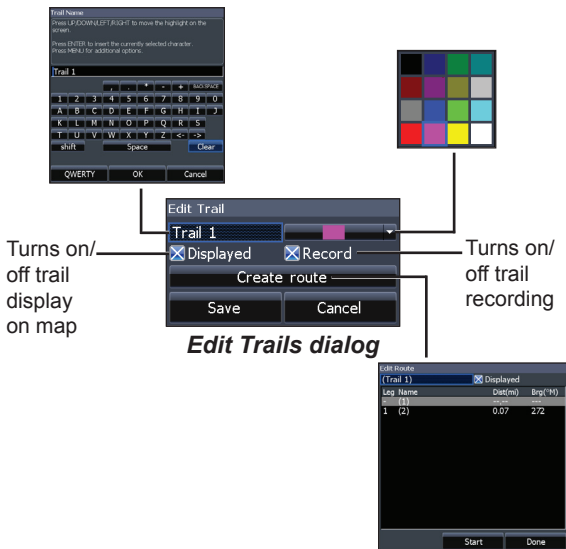


To create a trail:

1. Select *New* and press **ENTER**. The New Trail dialog will appear.
2. Select *Save* and press **ENTER**.

Edit and New Trail dialogs

Allows you to edit/create trails, select trails names, trail color, trail display and the trail being recorded. You can also convert a trail into a route from the Edit Trails dialog.



Navigating a trail

A trail must be saved as a route before it can be navigated.

To save a trail as a route:

1. Highlight the desired trail on the Trails screen and press **ENTER**. The Edit Trail menu will appear.
2. Highlight *Create Route* and press **ENTER**. The Edit Route menu will appear.
3. Highlight *Done* and press **ENTER**.
4. For navigation instructions refer to the “Navigating a route” segment.

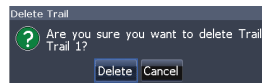
Displayed and Record

Displayed allows you to show/hide trails on the map display, preventing the screen from being cluttered with trails.

The Record command allows you to record or resume recording a desired trail.

Delete and Delete All

Delete is used to remove individual trails. Delete All removes all trails.

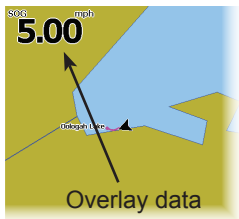


Orientation

Allows you to select North Up or Course Over Ground (COG) as the map orientation.

Overlay Data

Allows you to select data (course over ground, etc) to be displayed on top of the Chart page.



Overlay data setup is covered in the “Pages” section.

Settings

Accesses the “Chart settings” menu.

Chart Settings

Controls map data used on the chart screen as well as display settings like grid lines, waypoints, routes and trails.

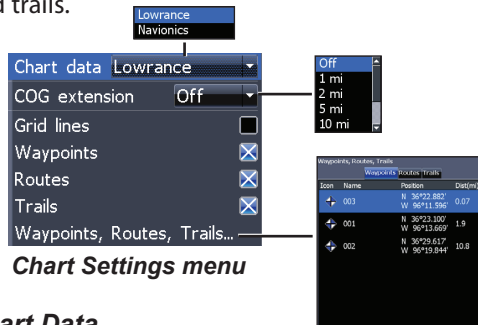


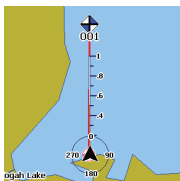
Chart Settings menu

Chart Data

Selects map data that will be used on the Chart display (Lowrance or Navionics regional map). Go to Navionics.com to see a full selection of available charts.

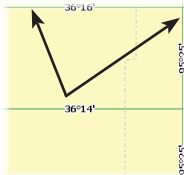
COG Extension

A line extending from the front of the current position icon that estimates the time and distance to areas in front of you.



Grid Lines

Displays base values for latitude and longitude, making it easier to get a general idea of your location on the latitude/longitude scale.



Waypoints, Routes and Trail displays

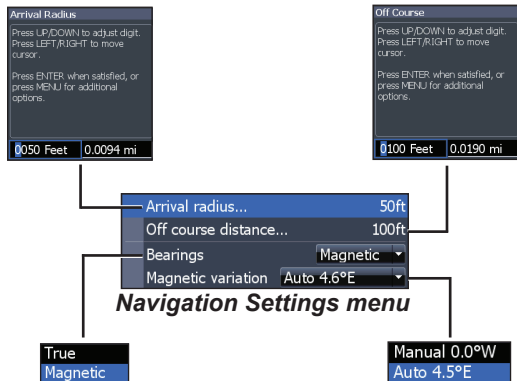
From the Chart Settings menu, you can turn on/off waypoint, route and trail display properties. Turning off display properties allows you to get a better view of the map, if the screen becomes cluttered with waypoints, routes and/or trails.

Waypoints, Routes, Trails

Accesses the Waypoints, Routes & Trails screen. Waypoints, Routes and Trails are covered in the “Chart operation” section.

Navigation Settings (Advanced mode only)

Controls Arrival Radius and Off Course distance settings and is used to turn on/off WAAS/MSAS/EGNOS.



Arrival Radius

Sets the arrival radius threshold for the Arrival alarm. The arrival alarm will sound when your vessel comes within a selected distance (arrival radius) of the destination waypoint.

Off Course Distance

Sets Off Course Distance threshold for the Off Course alarm. When the selected off course distance is exceeded, the Off Course alarm will sound when the alarm is enabled.

Bearings

Controls whether bearing will be calculated using True North or Magnetic North. Magnetic North should be used when navigating with a compass course or heading; otherwise, use the default setting, True North.

Magnetic Variation

Controls whether magnetic variation will be calculated using Automatic or Manual settings. Magnetic variation is the angle between magnetic north and true north. The automatic setting reconciles the variation for you.

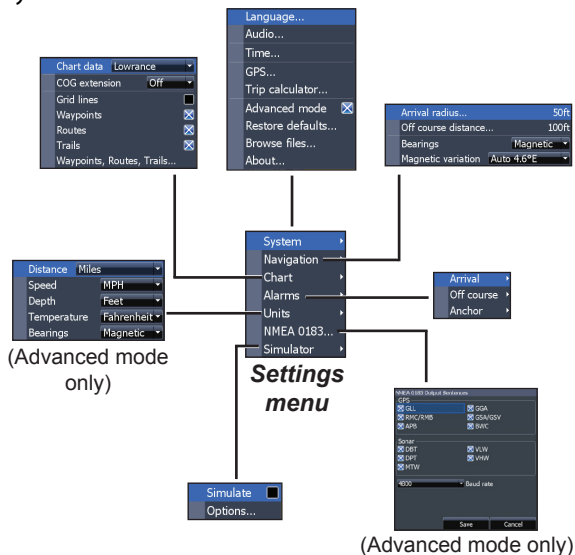


WARNING: *You should only use the Manual magnetic variation setting if you have variation information from a verified source.*

Settings

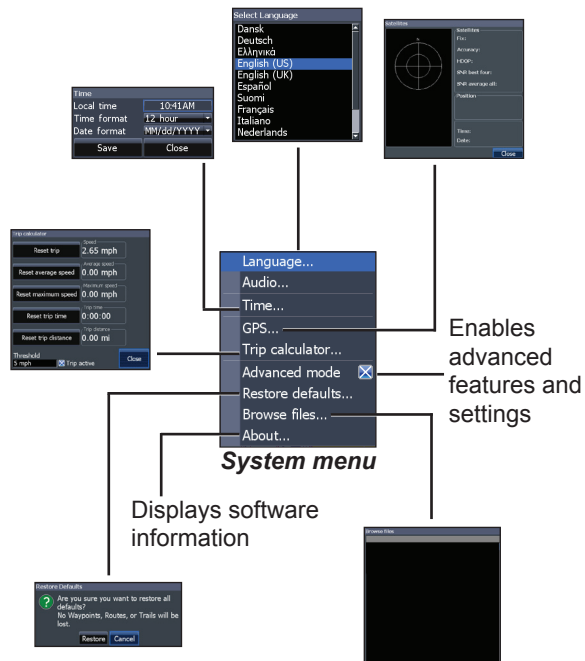
Settings menu

Accesses installation and configuration settings for your unit.



System

Adjusts unit settings like language, mute audio and advanced mode.



Set Language

Selects the language used on menus and text boxes.

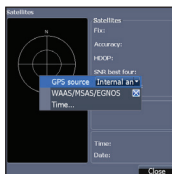


Audio

Adjusts volume and turns on/off unit audio, like key beeps, alarm sounds, etc.

GPS

Monitors the location of satellites in view and the quality of the unit's satellite lock-on. GPS Source, WAAS/MSAS/EGNOS and Time features are accessed from the GPS dialog.



GPS Source

Selects the antenna your unit will use for GPS. You will use the built-in GPS antenna unless you have a LGC-16W external antenna (p/n: 000-00146-001).

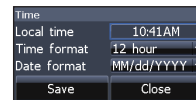
WAAS/MSAS/EGNOS

Turns on/off WAAS, MSAS and EGNOS.

All three systems help increase GPS accuracy for different parts of the world.

Time

Used to set local time, and time and date formats for your unit.

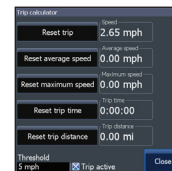


Trip Calculator

Tracks trip time, speed and distance when you are moving faster than the selected threshold.

Advanced Mode

Enables features and settings only available with the unit in Advanced Mode.



Restore Defaults

Switches the unit back to default settings.

Browse Files

Allows you to view a list of the files saved to the microSD card.

Saving Screenshots

You can save screenshots to a microSD card by inserting a microSD card into the card slot and pressing Power and then Zoom (+).

You must view files on a computer or other microSD compatible device.

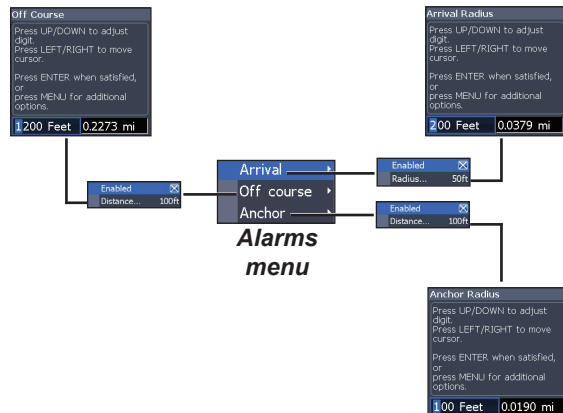
About

Displays software information about this unit. Before attempting a software update, you can check the version of software your unit is using by accessing the About screen.

Lowrance periodically updates unit software to add features and improve functionality. To see the latest available software version go to www.lowrance.com.

Alarms

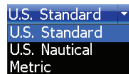
Enables alarms and selects alarm thresholds. “Arrival,” “Off Course” and “Anchor” alarms are only available in Advanced mode.



Alarms	
Arrival	sounds alarm when you are within a selected distance of your destination (Advanced Mode only)
Off Course	sounds alarm when course exceeds a selected off-course threshold (Advanced Mode only)
Anchor	sounds alarm when vessel moves a selected distance (Advanced Mode only)

Units

Allows you to select the unit of measure used by the unit. Unit options vary depending on whether the unit is in basic or advanced mode.



Basic Mode



Advanced Mode

NMEA 0183 Output

You can select the NMEA 0183 sentences the unit will use when connected to a VHF radio or other NMEA 0183 device.

You can also adjust the Baud rate, but the default setting works best under most conditions.



Simulator

Simulates GPS activity. Simulations can be customized on the Simulator options menu.

Elite-5m HD	
General	
Case Size	5.4" H (136 mm) x 6.9"W (174 mm); 5.9" H (151 mm) with bracket
Display	(5" diagonal) 16-bit color Full color VGA Solar MAX™ Plus TFT
Waterproof standard	IPX7
Backlight	LED (11 levels)
Communications	NMEA 0183 Output
Declaration of Conformity	Part 15.103 FCC rules & CE RTTE directive 1999/5/EC
Power	
Transmit Power	250W RMS; 30,000 PTP
Power Requirement	12V
Voltage Input	10 to 17V
Current drain	Typical: 1.1A
Fuse type	3-amp Automotive

GPS	
Mapping card slot	microSD and microSDHC
GPS Antenna	High accuracy GPS antenna (internal); optional external GPS antenna sold separately
Mapping compatibility	Fishing Hot Spots & Navionics (Hotmaps, Premium and Gold)
Waypoints, Routes & Trails	Up to 3000 waypoints, 100 routes/100 waypoints per route, 100 retracable plot trails/up to 10,000 points per trail

Index

- A**
 - About 28
 - Add overlay data: 11
 - Adjusting the backlight 4
 - Advanced Mode 9
 - Alarms 28
 - Anchor alarm 29
 - Arrival alarm 29
 - Arrival Radius 24
- B**
 - Basic Operation 6
 - Bearings 24
 - Browse Files 28
- C**
 - Cancel navigation 18
 - Chart 22
 - Chart Data 22
 - Chart menu 22
 - Chart Page 10
 - COG Extension 23
 - Creating a route 16
 - Creating trails 19
 - Cursor 8
 - Customizing Overlay Data 12
- D**
 - Data Port 27
 - Dialogs 8
- E**
 - Dropdown menus 8
 - Editing waypoints 15
- G**
 - Goto cursor 9
 - Goto waypoint 15
 - GPS Source 27
 - Grid Lines 23
- L**
 - Language 27
- M**
 - Magnetic Variation 25
- N**
 - Man Overboard waypoint 4
 - microSD cards 5
 - Muting Audio 4
 - Navigating a route 17
 - Navigating a trail 21
 - Navigation 24
 - Navigation menu 24
 - New Waypoint 13
 - NMEA 0183 29
- O**
 - Off Course alarm 29
 - Off Course Distance 24

On/Off features 7
Orientation 21
Overlay Data 11, 22
 Configure 11
 Customizing 12
 Show 11

P

Page menus 6

R

Restore defaults 9
Route display 23
Routes Screen 16

S

Saving Screenshots 28
Scrollbars 7

Selecting a GPS Source
 4
Setup wizard 6
Software Updates 28
Sort waypoints 16
Standby mode 9
Steer Page 10
System settings 26

T

Text entry 8
Time 27
Trail display 23
Trails Screen 19
Turn unit on/off 4

U

Unit Controls 4
Units 29

W

WAAS/MSAS/EGNOS
 27
Waypoint display 23
Waypoints, Routes,
 Trails 14
Working with menus 7

Navico Databases License Agreement

THIS IS A LEGAL AGREEMENT BETWEEN THE END-USER WHO FIRST PURCHASES THIS PRODUCT AS A CONSUMER ITEM FOR PERSONAL, FAMILY, OR HOUSEHOLD USE ("YOU") AND NAVICO, THE MANUFACTURER OF THIS PRODUCT ("WE", "OUR", OR "US").

USING THE PRODUCT ACCOMPANIED BY THIS LICENSE AGREEMENT CONSTITUTES ACCEPTANCE OF THESE TERMS AND CONDITIONS.

IF YOU DO NOT ACCEPT ALL TERMS AND CONDITIONS, PROMPTLY RETURN THE PRODUCT WITHIN 30 DAYS OF PURCHASE. PLEASE RETURN USING THE ENCLOSED UPS SHIPPING LABEL AND INCLUDE: PROOF OF PURCHASE, NAME, ADDRESS, AND PHONE NUMBER. YOUR PURCHASE PRICE AND ANY APPLICABLE TAXES WILL BE REFUNDED. PLEASE ALLOW 4-6 WEEKS TO PROCESS YOUR REFUND.

1. This License Agreement applies to the one or more databases that your product may contain. We refer to these singly as a "Database" and together as the "Databases." Your product may thus include the "WBS Database" which contains worldwide background surface mapping data, the "Indigo Database" which contains inland mapping data, or other Databases.
2. The Databases that your product may contain are licensed, not sold. We grant to you the nonexclusive, nonassignable right to use these Databases for supplemental navigation reference purposes, but only as long as you comply with the terms and conditions of this License Agreement. We reserve the right to terminate this license if you violate any aspect of this License Agreement. You are responsible for using official government charts and prudent navigation for safe travel.
3. The Databases housed in your product are protected by the copyright notices appearing on the product or its screen(s). You may NOT modify, adapt, translate, reverse engineer, decompile, disassemble, rent, lease, or resell any Database, and you may NOT create derivative works based upon any Database or its contents. Any unauthorized reproduction, use, or transfer of a Database may be a crime and may subject you to damages and attorney fees.
4. This License Agreement will terminate immediately without prior notice from us if you fail to comply with or violate any of the provisions of this Agreement. Upon termination, you will promptly return all products containing one or more Databases to us.
5. Prices and programs are subject to change without notice.
6. This License Agreement shall be governed by the laws of the State of Oklahoma and comprises the complete and exclusive understanding between you and us concerning the above subject matter.

Databases Limited Warranty

"We", "our", or "us" refers to Navico, the manufacturer of this product. "You" or "your" refers to the first person who purchases the product as a consumer item for personal, family, or household use. The Databases Limited Warranty applies to the one or more databases that your product may contain. We refer to each of these as a "Database" or together as the "Databases." Your product may thus include the "WBS Database" which contains worldwide background surface mapping data, the "Indigo Database" which contains inland mapping data, or other Databases.

We warrant to you that we have accurately compiled, processed, and reproduced the portions of the source material on which the Databases are based. However, we are under no obligation to provide updates to the Databases, and the data contained in the Databases may be incomplete when compared to the source material. WE MAKE NO EXPRESS OR IMPLIED WARRANTY OF ANY KIND ABOUT THE ACCURACY OF THE SOURCE MATERIAL ITSELF, INCLUDING BUT NOT LIMITED TO IMPLIED WARRANTIES OF MERCHANTABILITY OR FITNESS FOR A PARTICULAR PURPOSE.

If there is a defect in any Database, your exclusive remedy shall be, at our option, either a refund of the price you paid for the product containing the defective Database or a replacement of such product. WE WILL NOT UNDER ANY CIRCUMSTANCES BE LIABLE TO ANYONE FOR ANY SPECIAL, CONSEQUENTIAL, INCIDENTAL, OR OTHER INDIRECT DAMAGE OF ANY KIND.

Some states do not allow the exclusion or limitation of incidental or consequential damages, so the above limitations or exclusions may not apply to you.

This warranty does NOT apply in the following circumstances: (1) when the product has been serviced or repaired by anyone other than us; (2) when the product has been connected, installed, combined, altered, adjusted, or handled in a manner other than according to the instructions furnished with the product; (3) when any serial number has been effaced, altered, or removed; or (4) when any defect, problem, loss, or damage has resulted from any accident, misuse, negligence, or carelessness, or from any failure to provide reasonable and necessary maintenance in accordance with the instructions of the owner's manual for the product.

We reserve the right to make changes or improvements in our products from time to time without incurring the obligation to install such improvements or changes on equipment or items previously manufactured.

This warranty gives you specific legal rights and you may also have other rights which may vary from state to state.

Your remedies under this warranty will be available so long as you can show in a reasonable manner that the defect occurred within one (1) year from the date of your original purchase, and we must receive your warranty claim no later than 30 days after such 1-year period expires. Your claim must be substantiated by a dated sales receipt or sales slip.

Contact information

Customer Service:

1-800-628-4487

(8 a.m. to 5 p.m. Central Standard Time, M-F)

(Canada)

1-855-361-1564

canada@navico.com

(8 a.m. to 5 p.m. Eastern Standard Time, M-F)

Ordering Accessories

<http://store.navico.com/>

Visit our website

www.lowrance.com

Visit our website:

www.lowrance.com

