

Talk about mobile. Now you can add full

GPS navigation capabilities to your

Wireless GPS for your PC laptop or Pocket PC.

Pocket PC or PC laptop with this

Bluetooth®-enabled wireless GPS

receiver. You'll get detailed mapping

with features to look up addresses,

restaurants and other services. Select a

destination and get turn-by-turn

directions and voice prompts to the

front door. The GPS 10 comes with

both nRoute™ mapping software for use

on your Bluetooth-enabled laptop and

Garmin Que™ software for use

with a Bluetooth-enabled Pocket PC.

Now you're going places —

with no strings attached.



GPS performance

Receiver: 12 parallel channel GPS receiver continuously tracks and uses up to 12 satellites to compute and update your position

Acquisition times:*
Reacquisition: Less than 2 seconds
Warm: Approximately 15 seconds
Cold: Approximately 45 seconds
AutoLocate™: 5 minutes
SkySearch: 5 minutes

Update rate: 1 to 900 seconds between updates; programmable in 1 second increments

GPS accuracy:
Position: < 15 meters, 95% typical**
Velocity: 0.1 knot RMS steady state

DGPS (WAAS) accuracy:
Position: < 3 meters, 95% typical
Velocity: 0.1 knot RMS steady state

Dynamics: 999 knots, 6g's

Temperature:
Operating: -30° to 80°C
Storage: -40° to 90°C

Physical

Size: 1.77"W x 3.46"H x .75"D (45 x 88 x 19 mm)

Weight: 2.8 ounces (80 g)

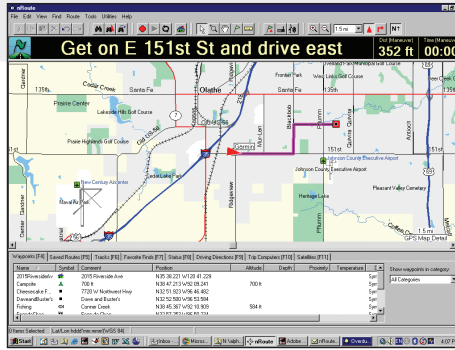
Case: Waterproof to IEC 60529 IPX7 standards

Power Supply: Rechargeable lithium ion; 12 hours (typical use)
 12-volt adapter cable
 Auto Power On feature, when connected to a switched external power source

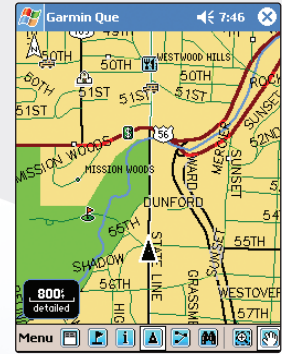
Interfaces: Connects to Pocket PC or personal computer with Bluetooth wireless technology

Protocol: NMEA 0183, sentences GGA/GSA/GSV/GLL/RMC/VTG

Part number:
GPS 10: 010-00378-00



nRoute™ with MapSource® City Select® detail, as it appears on a PC screen.

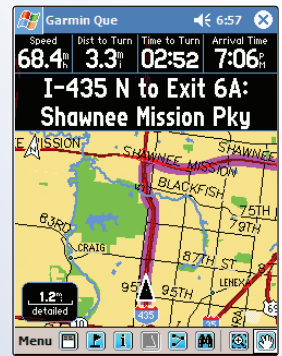


Garmin Que with MapSource City Select detail as it appears on a Pocket PC device

Accessories

Standard: GPS 10 wireless receiver
 Integrated magnetic mount
 nRoute™ software for PC laptops
 City Select® North America CD
 Garmin Que™ software for Pocket PCs
 Velcro mounting patch
 12-volt adapter cable
 Setup guide
 Owner's manual

Optional: Windshield suction cup mount
 A/C wall charger
 Universal PDA mount



Your device automatically calculates a route.

©2004 Garmin Ltd. or its subsidiaries.



Garmin International, Inc.
 1200 East 151st Street
 Olathe, Kansas 66062, U.S.A.
 913/397.8200 fax 913/397.8282

Garmin (Europe) Ltd.
 Unit 5, The Quadrangle
 Abbey Park Industrial Estate
 Romsey, SO51 9DL, U.K.
 44/1794.519944 fax 44/1794.519222

Garmin Corporation
 No. 68, Jangshu 2nd Rd.
 Shijr, Taipei County, Taiwan
 886/2.2642.9199 fax 886/2.2642.9099

www.garmin.com

Specifications are preliminary and subject to change without notice.

* Warm = all data known.
 Cold = position, time and almanac known.
 AutoLocate™ = almanac known, position and time unknown.
 SkySearch = no data known.

** Subject to accuracy degradation to 100m 2DRMS under the U.S. Department of Defense imposed Selective Availability Program.

NAVTEQ ON BOARD is a trademark of NAVTEQ.
 ©2004 NAVTEQ. All Rights Reserved.
 Bluetooth is a certification mark of Bluetooth SIG, Inc.