

Using Topo USA with your PN-Series GPS

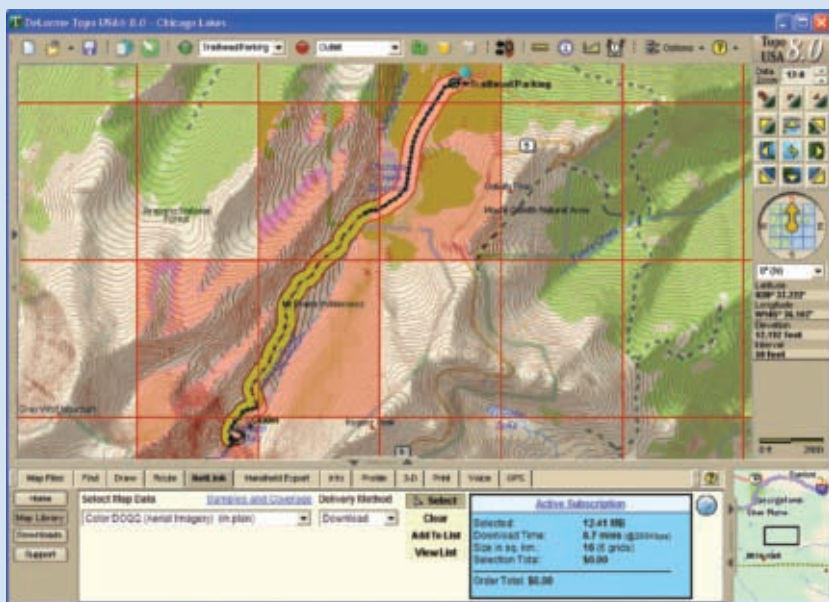
Install Topo USA on your computer

Use Topo USA to quickly create projects containing waypoints, tracks, routes, and maps that you can send to your PN-Series GPS. After you gather info in the field, send it to Topo USA and manage everything in one location. For detailed information, see your device's User Manual and the Help in Topo USA.

Add a map from the Map Library

Layer additional maps and data from the Map Library over your Topo USA maps. See the Map Library Subscription box below for more information. For detailed help, click the blue NetLink Help button (?) on the Map Library subtab.

1. Use the Find tab to locate the area.
2. On the NetLink tab, click **Map Library** and enter your download certificate or Map Library validation key.
3. Select the map data type from the drop-down list.
4. Click the **Select** button and click each grid on the map, or click and hold the left mouse button and drag the cursor on the map to select multiple grids.



5. Click the **Add to List** button and then name your selection.
6. Make sure the PN-Series map package check box is selected and click **Checkout**.
 - An email notifies you when your order is ready
 - Click **Downloads** on the NetLink tab to check order status
7. Once you download your map file, the Exchange dialog opens and your PN map package is highlighted in the Saved Map Packages list on the left.
8. In the Exchange dialog, select the destination from the drop-down list.
 - Fastest transfer—send to an SD card in an SD card reader.

Map Library Subscription

Subscribe and SAVE!

Now you can purchase an annual \$29.95 NetLink subscription to access the complete collection of supplementary datasets offered by DeLorme.

These additional map and imagery types can be layered for PN-Series GPS use along with Topo USA street and topographic maps. Sample these datasets for free using the included certificate found in your Topo USA software case.

After you've used your sample data, if you want more you can download USGS 7.5-minute QUADS, high-resolution color imagery, NOAA nautical charts, plus other datasets ideal for use with your PN-Series GPS. No more paying as you go — instead, enjoy remarkable savings over buying a la carte and experience the ease of mind provided by a subscription plan.

To purchase your subscription, click the NetLink tab in the Topo USA software and follow the instructions.



- Best use of memory—send to the device's internal memory. *Connect the device to the computer with the USB cable and power it on. From the Connect to Computer page, select Map Transfer > Transfer to Internal. You can also press MENU and go to Device Setup > Connect to Computer.*

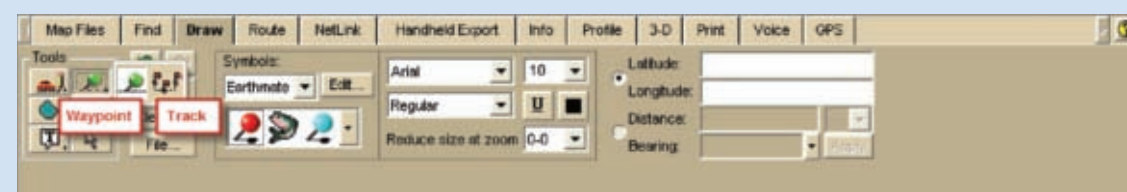
Exchange maps, waypoints, tracks, and routes

The Exchange dialog sends and receives maps waypoints, tracks, and routes between Topo USA and your PN-Series GPS. You can also send maps to an SD card in an SD card reader.



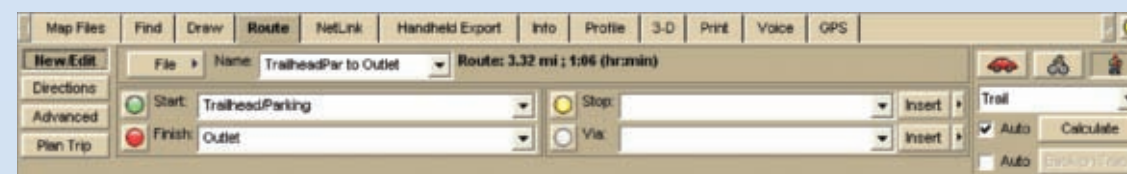
Draw tab—waypoints and tracks

Use the Draw tab to add waypoints and tracks to your map.



Route tab

Use the Route tab to create a driving, biking, or hiking route.



Earthmate PN-Series

Quick Start Guide

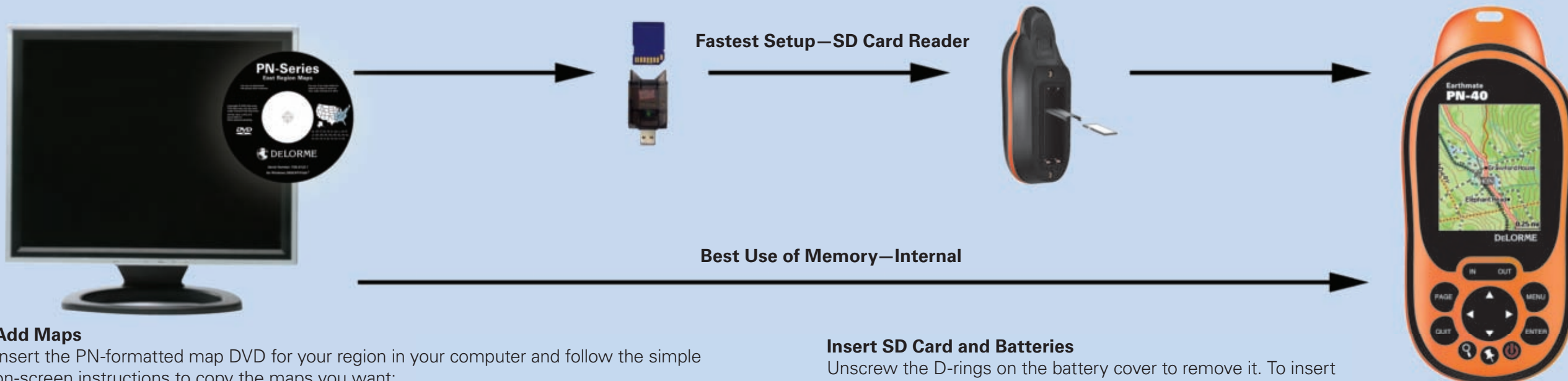


What's in the box

- Earthmate PN-40 or PN-30 GPS
- Quick Start Guide
- User Manual
- DeLorme Topo USA® software DVD
- PN-formatted maps on 4 DVDs
- SD card
- USB cable
- 2 AA batteries



Set up your PN-Series GPS



Add Maps

Insert the PN-formatted map DVD for your region in your computer and follow the simple on-screen instructions to copy the maps you want:

- To an SD card using your SD card reader (fastest setup)
- To the device's internal memory (best memory use)

Connect the device to the computer with the USB cable and power it on. From the Connect to Computer page, select the transfer method. You can also press MENU and go to Device Setup > Connect to Computer.

Insert SD Card and Batteries

Unscrew the D-rings on the battery cover to remove it. To insert an SD card, gently press the SD card latch, insert the card in the slot, and press the slot down to close it. Insert 2 AA batteries and replace the cover.

To change the battery type if you are using other than regular AA batteries, press MENU and go to Device Setup > System > Battery Type.

Take your PN-Series GPS outside



Go outside to a place where you have a clear view of the sky.
 Press and hold the Power button until you see the Welcome screen.
 Wait while the PN-Series GPS determines your location. It may take up to 10 minutes to determine your location the first time you use your PN-Series GPS.

Earthmate GPS PN-Series GPS Interface

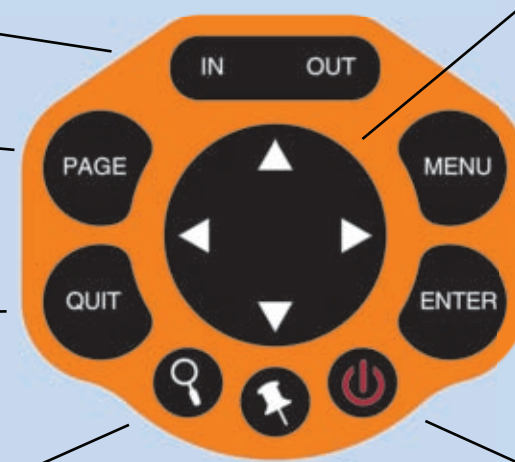
IN/OUT—Zoom the map in or out.

PAGE—Move forward through pages.

QUIT—Cancel an action or move backward through pages.

FIND—Search for 4 million points of interest, waypoints, addresses, and more.

MARK—Mark a waypoint at your GPS location or the cursor location when panning.



ARROW KEYPAD—Move the cursor, pan maps, and navigate the keyboard, menus, and lists.

MENU—Upper section options for active page. Lower section shows pages not in PAGE button sequence.

ENTER—Choose a menu, option, or field. Get info about a place on the map.

POWER—Press and hold to turn on. To turn off, press POWER and ENTER.