

# EPSON PRODUCT SUPPORT BULLETIN

---

**Date:** 11/8/04  
**PSB #:** PSB.2004.03.001C  
**Reference:** PSB.2004.03.001A  
**Product(s):** EPSON Stylus Color 3000, Stylus Pro 4000, 5000, 5500, 7000 Series, 7600 Series, 9000 Series, 9600 Series, 10000 Series, and 10600 Series  
**Subject:** Maximum Printable Area Limits for the EPSON Professional Graphic Printer line.

---

**Originator:** RB, CH, JD, SA  
**Authorization:** *[Signature]*  
**Total Pages:** 19

This bulletin was created to inform you of the maximum custom page sizes allowable for EPSON Professional Graphic products. The tables below show the maximum page sizes allowable for the EPSON Professional Graphics printer line (Desktop and Large Format). Although this document is meant as a guideline for the maximum page size allowable for each printer, it does not include printable area (margin) information. Please refer to your user guide for additional information regarding the printable area (margins) for your particular printer. There are 3 aspects that effect how long of a page your printer can output. Those 3 items are:

1. Operating System.
2. Driver Specification.
3. Software application(s) being used.

## **Maximum custom page size allowable per operating system (for Epson standard driver):**

	Stylus Color 3000	Stylus Pro 4000	Stylus Pro 5000	Stylus Pro 5500	Stylus Pro 7000	Stylus Pro 7500	Stylus Pro 7600	Stylus Pro 9000	Stylus Pro 9500	Stylus Pro 9600	Stylus Pro 10000 Series
Macintosh OS	44 in.	44 in.	44 in.	44 in.	90.5 in.	90.5 in.	90.5 in.	90.5 in.	90.5 in.	90.5 in.	90.5 in.
Macintosh OS X*	44 in.	44 in.	N/A	44 in.	N/A	N/A	90.5 in.	N/A	N/A	90.5 in.	90.5 in.
Win 9x/Me	44 in.	44 in.	44 in.	44 in.	90.5 in.	90.5 in.	90.5 in.	90.5 in.	90.5 in.	90.5 in.	90.5 in.
Win NT 4.0/2000/XP	44 in.	44 in.	44 in.	44 in.	90.5 in.	90.5 in.	90.5 in.	90.5 in.	90.5 in.	90.5 in.	90.5 in.

Print jobs being sent through the Epson standard print driver should be in the RGB format in order for color management to be utilized properly.

\* Macintosh OS X allows you to create any paper size regardless of printer driver's limitations. Exceeding these limitations will result in your image being cropped and printed at 8.5 x 11.

## **Maximum custom page size allowable for EPSON PostScript options (PPD):**

	Stylus Color 3000	Stylus Pro 4000	Stylus Pro 5000	Stylus Pro 5500	Stylus Pro 7000	Stylus Pro 7500	Stylus Pro 7600	Stylus Pro 9000	Stylus Pro 9500	Stylus Pro 9600	Stylus Pro 10000 Series
EPSON Stylus RIP	44 in.	N/A	44 in.	N/A	N/A	N/A	N/A	N/A	N/A	N/A	N/A
EPSON Fiery RIP Station	N/A	<b>N/A</b>	44 in.	N/A	<b>See NOTE 1</b>	<b>See NOTE 1</b>	<b>N/A</b>	<b>See NOTE 1</b>	<b>See NOTE 1</b>	<b>N/A</b>	N/A
EPSON Fiery Spark Designer (Mac)	N/A	N/A	N/A	44 in.	N/A	N/A	N/A	N/A	N/A	N/A	N/A
EPSON Fiery Spark Professional	N/A	N/A	N/A	44 in.	N/A	N/A	See NOTE1	N/A	N/A	See NOTE1	<b>See NOTE 1</b>
EPSON ColorBurst RIP	N/A	See NOTE1	N/A	44 in.	N/A	N/A	See NOTE1	N/A	N/A	See NOTE1	<b>See NOTE 1</b>

Print jobs being sent through the Epson PostScript driver can be either RGB or CMYK format. Settings in the RIP will determine how color management is used.

## **Maximum page size allowable from software applications:**

	Stylus Color 3000	Stylus Pro 4000	Stylus Pro 5000	Stylus Pro 5500	Stylus Pro 7000	Stylus Pro 7500	Stylus Pro 7600	Stylus Pro 9000	Stylus Pro 9500	Stylus Pro 9600	Stylus Pro 10000 Series
Adobe Photoshop 5.x/6.x/7.x/	<b>See NOTE 2</b>	<b>See NOTE 2</b>	<b>See NOTE 2</b>	<b>See NOTE 2</b>	<b>See NOTE 2</b>	<b>See NOTE 2</b>	<b>See NOTE 2</b>	<b>See NOTE 2</b>	<b>See NOTE 2</b>	<b>See NOTE 2</b>	<b>See NOTE 2</b>
Adobe Photoshop CS	See NOTE 2	See NOTE 2	See NOTE 2	See NOTE 2	See NOTE 2	See NOTE 2	See NOTE 2	See NOTE 2	See NOTE 2	See NOTE 2	See NOTE 2
*Adobe Illustrator 8.x/9.x	227 in.	227 in.	227 in.	227 in.	227 in.	227 in.	227 in.	227 in.	227 in.	227 in.	227 in.
*Adobe Illustrator CS	227 in.	227 in.	227 in.	227 in.	227 in.	227 in.	227 in.	227 in.	227 in.	227 in.	227 in.
QuarkXPress 4.x/5.x/6	48 in.	48 in.	48 in.	48 in.	48 in.	48 in.	48 in.	48 in.	48 in.	48 in.	48 in.
*CorelDRAW 8.x/9.x/10.x/11.x	1,800 in.	1,800 in.	1,800 in.	1,800 in.	1,800 in.	1,800 in.	1,800 in.	1,800 in.	1,800 in.	1,800 in.	1,800 in.

\* These applications allow for tiling of print pages, therefore allowing you to print beyond the printers maximum page length limit and print to the applications limits. The printer driver must be set for Roll Paper (Banner) mode so that page breaks at the printer's maximum page length do not occur (in essence gives you a 0 margin for the bottom of the page). The Stylus Pro 5000/5500 however will give a slight page break at the 44 inch limit as these printers do not support banner mode. Also, printing certain elements from these applications may not utilize color management correctly/properly and may produce output color that is not expected.

### **NOTE 1:**

- a. Under Win 9x/Me, the PPD limit is 129 inches.
- b. Under Windows NT, 2000 and XP, the PPD limit is 1771.6 inches (SP7000/9000 Series) and 1800 inches (SP7600/9600/10000 Series).
- c. Under Mac OSX/8.x/9.x, the PPD limit is 273.06 inches.

### **NOTE 2:**

Adobe Photoshop has a pixel limitation of 30,000 pixels, which means that a document created @ 300ppi can only reach a maximum page size of 100 inches (H and V). When sending jobs to the printer via the standard non-PostScript print driver, Photoshop looks at the input resolution of the printer driver and adjusts the page size accordingly. All Epson large format printers use 360dpi as the input resolution (this is the resolution data is rasterized at), therefore when printing from Photoshop, the maximum page length you will be able to output to any Epson large format printer using the standard Epson print driver would be 83.33 inches (30,000 pixels / 360dpi). As for the Epson desktop products, they rasterize data at 720dpi, therefore the maximum page length obtainable with the standard print driver would be 41.67 inches (30,000 pixels / 720dpi).

Also, under Photoshop 5.x/6.x for the Macintosh and Photoshop 6.x for the PC, the job will end up clipped if it is over the 83.3inch printer page limit. In Photoshop CS, the print job will end up clipped if it is over the 86inch printer page limit; however it will allow you to create a custom paper size of 91inches max. If you are using Photoshop 5.x for the PC, the print job will actually be truncated to fit within the printable area of the printer. Be advised that you may not get a page size error. It may be useful to enable the "print preview" function of your printer driver (if available) so that you do not waste unnecessary media.

The only options for printing beyond the limitations is to save the file and print via an application that does not have the 30,000 pixel limit (may lose color management functions) or print the file through a PostScript RIP (which will allow for longer pages).

**UPDATE:** Photoshop CS allows for a maximum Pixel limit of 300,000 x 300,000 (this would create a 251.5 GB file!!) This allows Photoshop to have a print dimension of 4166.666 x 4166.666 at 72 ppi (Pixels per Inch). At 360 ppi, your max print size would be 833.333 x 833.333. You can still only print 44 x 90.5" Photoshop CS at this point exceeds the capability of our printers.

For Windows Users, if you encounter partial/incomplete prints while having Finest Detail enabled, please disable this setting. It is recommended for low resolution text and line art to sharpen their edges. For photos, this may create a massive print file that is too large for the printer driver to process correctly.

The following examples show how to setup banner printing from Adobe Illustrator 8.x/9.x and CorelDRAW 9 from the PC platform. The Macintosh versions of these applications should be very similar in function. Please refer to your software documentation for additional assistance.

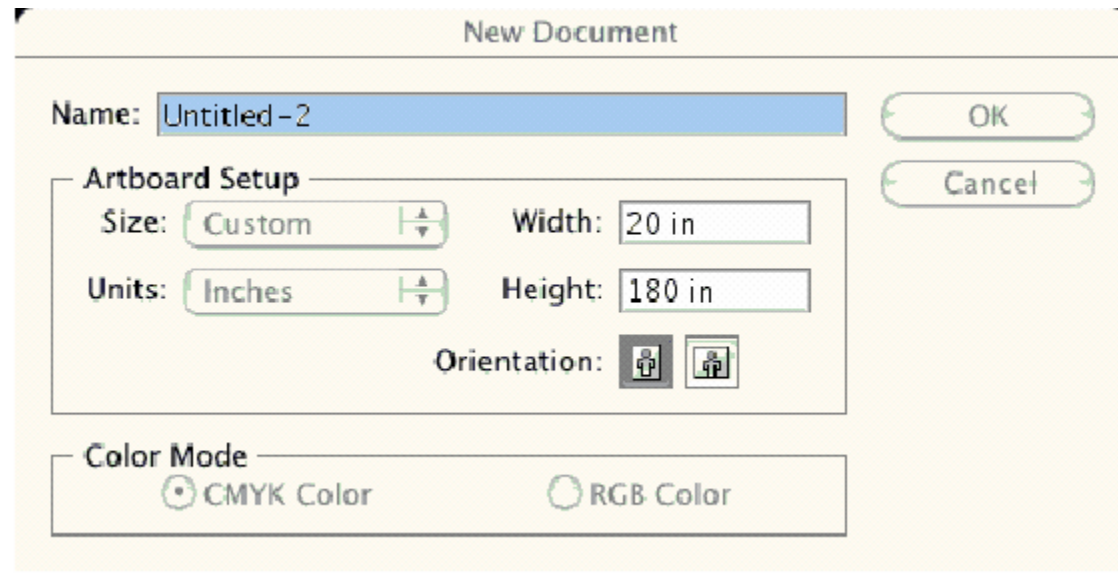
## **Adobe Illustrator CS:**

In this example, we are creating a banner, which is 227 inches (Illustrators max. page setup).

### **NOTE:**

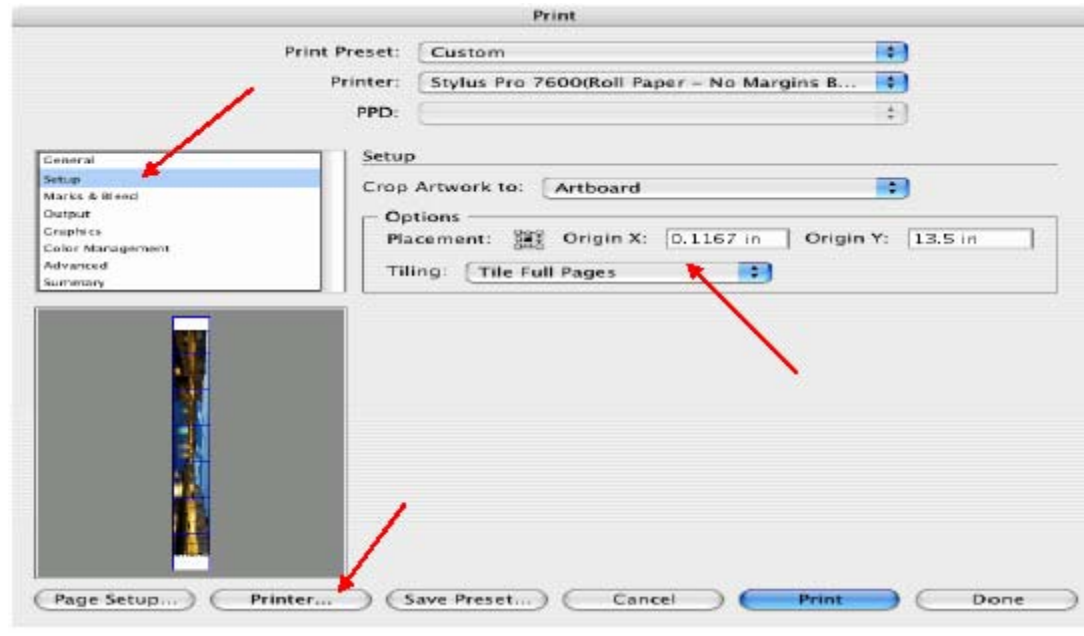
Mac O/S 10.3.3 system is used in this example. Windows versions of this application should be very similar in functionality. Please refer to your software documentation for additional assistance. In this example, a “20 inches wide X 180 inches high” document is created.

1. Click on File and New, set up the width and height (sample shows 20 W x 180 H), then click OK.



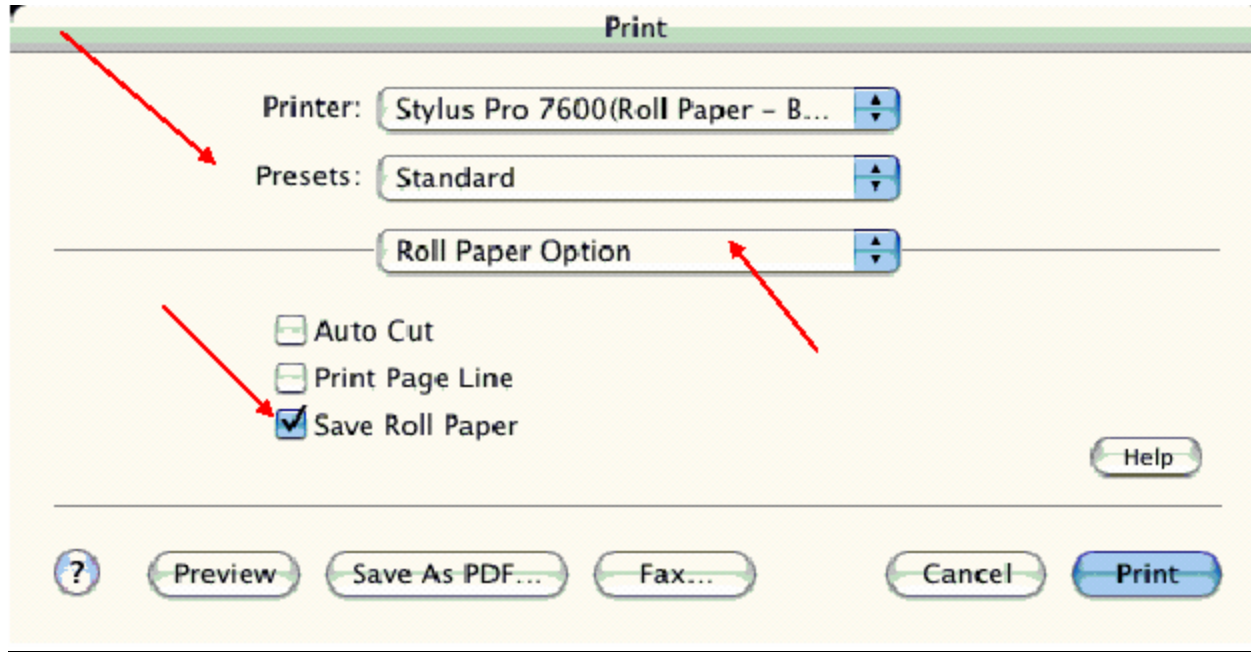
2. Insert the image you want to print and stretch it until it covers the whole page.

3. Click on File, Print, click Setup, under Tiling click on the drop down arrow, select **Tile Full**
4. **Pages** and click the **Printer** button.



5. When the printer setup window comes up, select your printer name and set the **Roll Paper Options** to:  
**Roll Paper Banner**  
**Roll Paper Banner – No Margin** ( if printing no margins)
6. In the **Copies and Pages** section, click on the drop down arrow, select **Roll Paper Option**. Uncheck **Auto Cut** then check **Save Roll Paper**.

7. Then click on **Print**. This will bring you back to the **Print** window.



8. This time click on **Page Setup**, you see the following screen, just click on **Continue** (If you don't want to see the window again, place a check mark on **Don't Show Again** box).

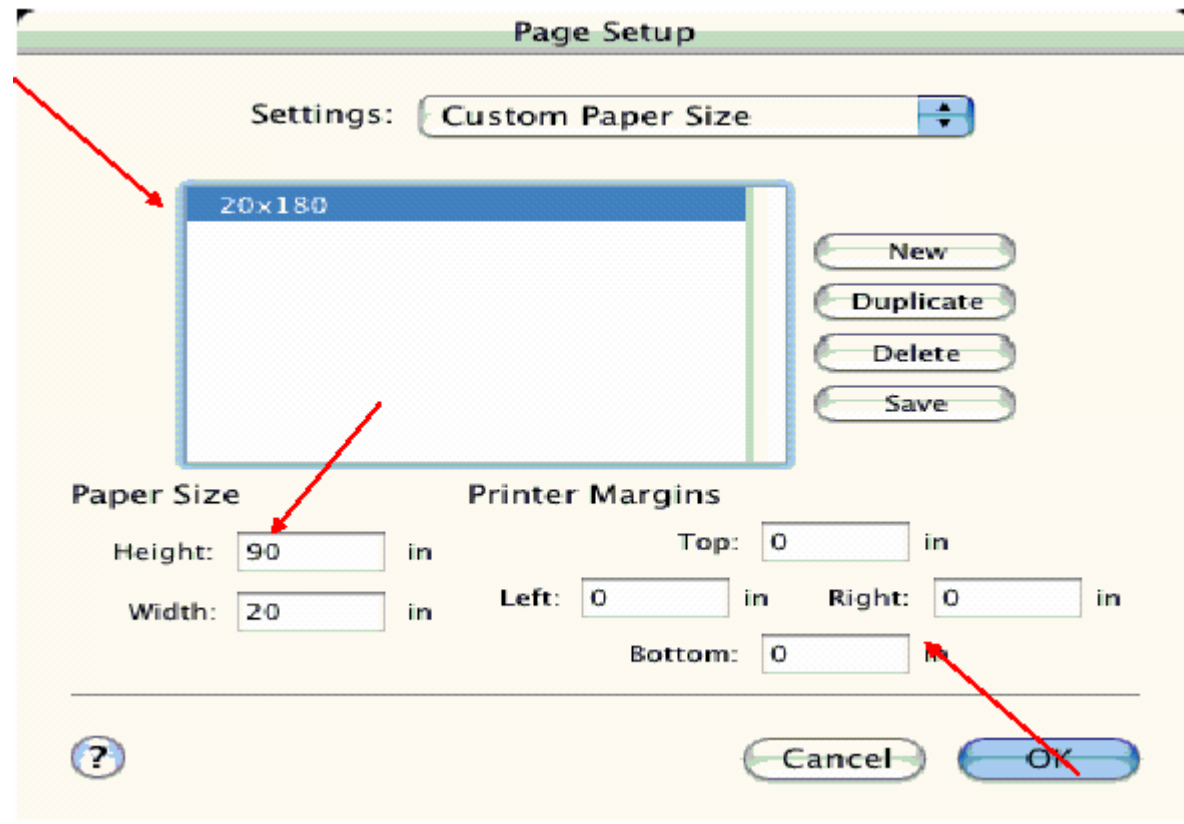


9. When **Page Setup** is open, click on the down arrow for **Custom Paper Size**.

**NOTE:**

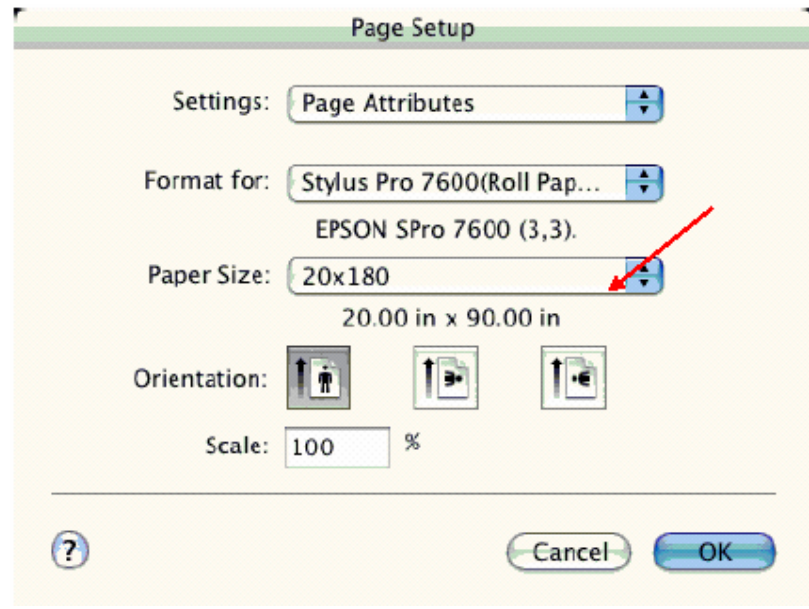
When creating the custom page size, divide the banner size by a value that will make it less than the printer maximum custom page size (90.5 inches). In this example we take  $(180/2 = 90)$ , therefore the custom page size created would be 20x90 (inches).

10. Click on **New**, name the custom size (i.e. 20 x 180 in this example), under **Paper Size** type in 20 inches for the width and 90 inches for the height, margins should be set to zero (0). Click on **Save**. Click on the down arrow again in the **Custom Paper Size** and select **Page Attributes**.



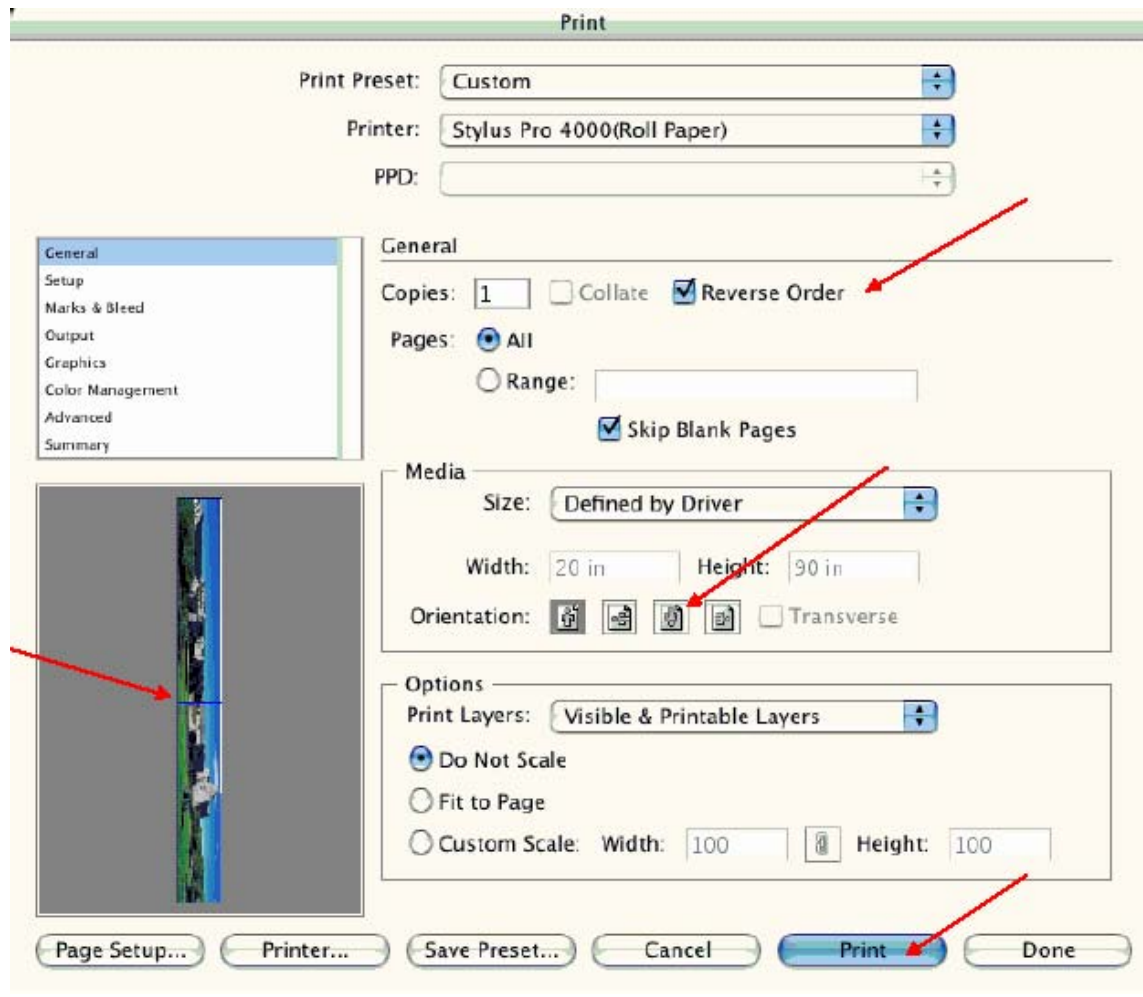


11. Under **Paper Size**, click on the drop down arrow and select the custom paper size you created (i.e. 20 X 180) orientation is set to portrait mode. Then click **OK**.



12. In the **Print** windows the preview pane will show 2 grids or pages. This indicates that a full image is tiled.

13. Click on **General**, then click the square on **Reverse Order**.



4. Click on **Print**.

**NOTE 1:** When enabled, the first page will be printed first, instead of the last page first. Or Change the orientation to “Reverse”, then you don’t have to check the “Reverse Order”.

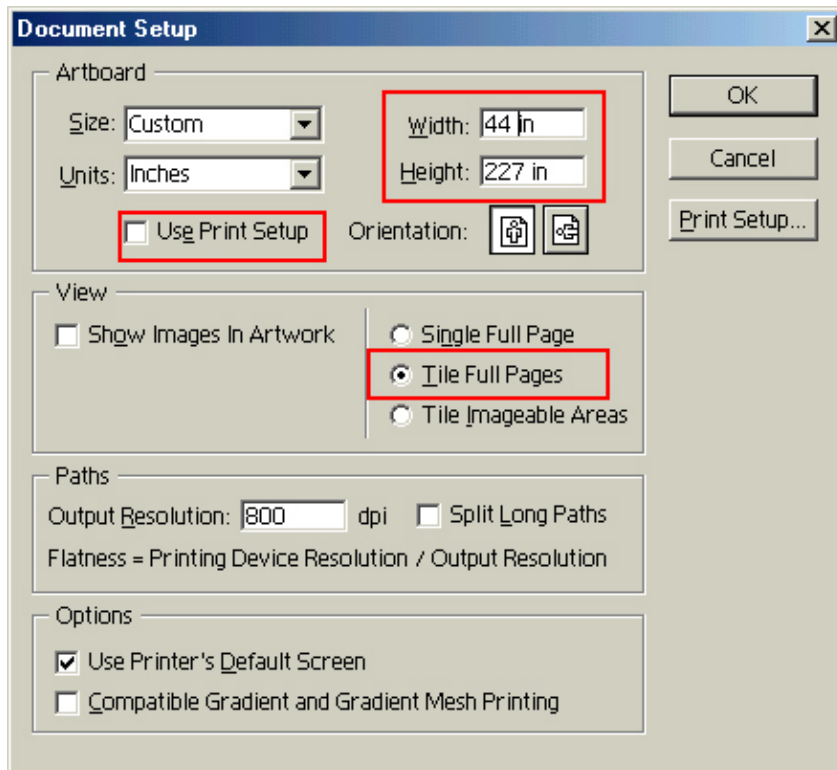
**NOTE 2:** Always select the custom page size last, if not, it will default to other paper sizes.

**NOTE 3:** Before printing a large document, make sure you have enough ink to prevent getting an Ink Out message, causing the print job to stop and not completing the entire print.

## **Adobe Illustrator 8.x/9.x:**

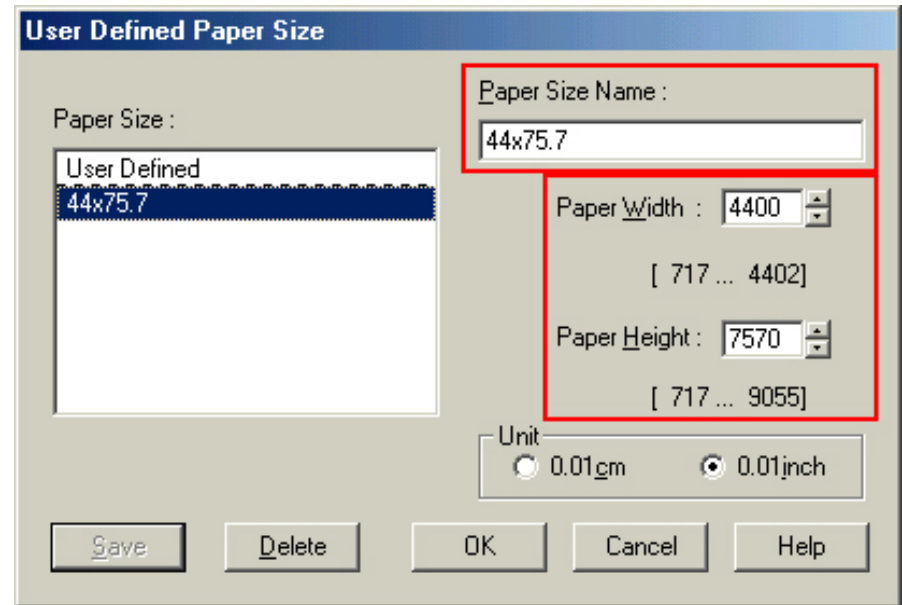
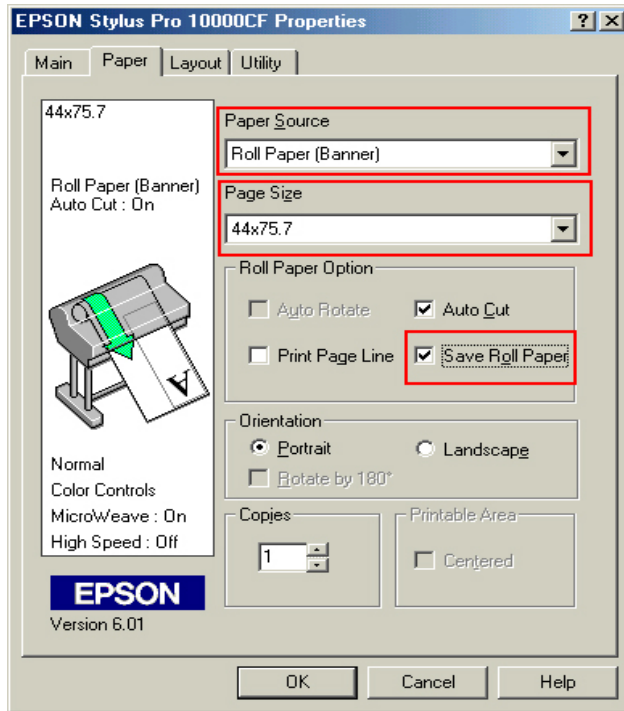
In this example, we are creating a banner, which is 227 inches (Illustrators max. page setup).

1. Launch Illustrator and open or place your file in the page layout.
2. Click on **File**, then **Document Setup**. The following screen appears.
3. Uncheck **Use Print Setup**, enable **Tile Full Pages** and create the page size (in our example we used 44x227 inches).



4. Click, **Print Setup**. This will bring up the print driver.

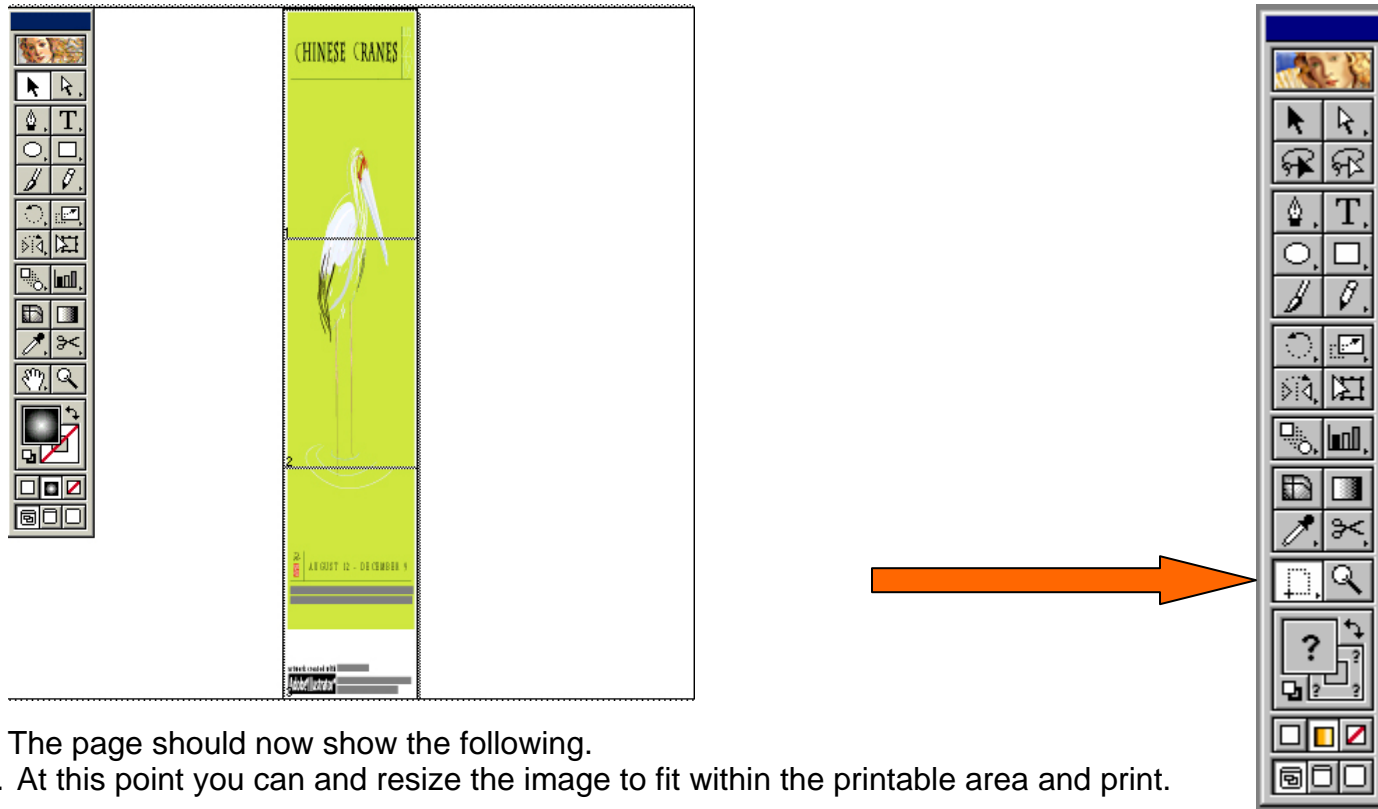
5. Click on the **Paper Tab**. The following appears.



6. Set the **Paper Source** to **Roll Paper (Banner)** and also enable **Save Roll Paper**.

7. When creating the custom page size, divide the banner size by a value that will make it less than the printer maximum custom page size. In this example we take  $(227/3 = 75.7)$ , therefore the custom page size created would be 44x75.7 inches. The reason for this is to save media.

- After setting the custom page size and other driver settings (media type, resolution, etc.), click **OK**. This will bring you back to the document setup. Now double-click the “Page” tool.

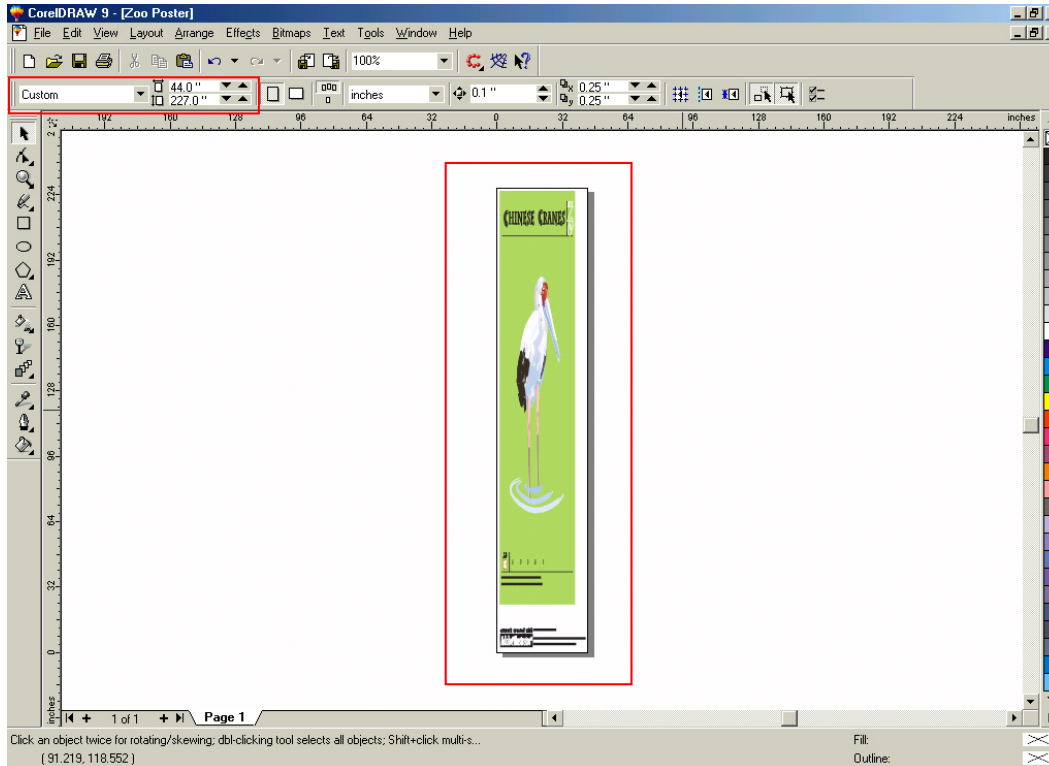


- The page should now show the following.
- At this point you can and resize the image to fit within the printable area and print.

## **CorelDRAW:**

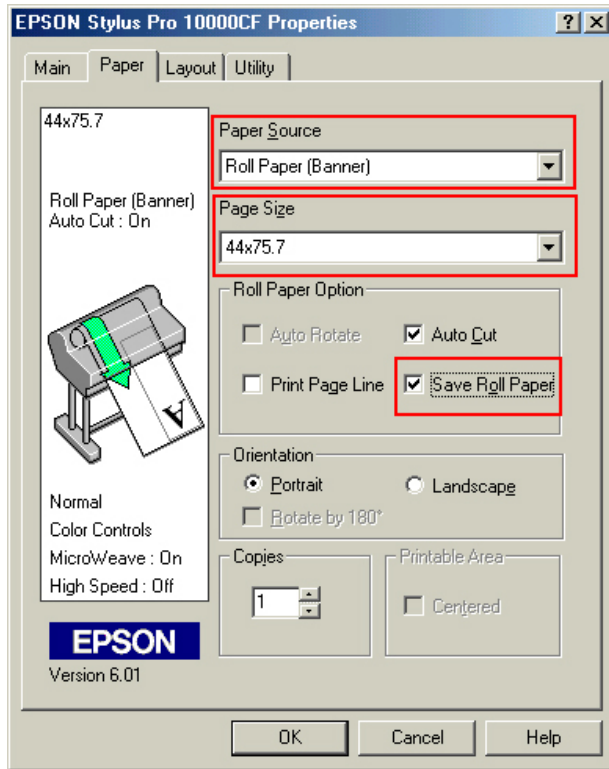
In this example, a banner is created at 227 inches.

1. Launch CorelDRAW and open or place an image in your page layout.
2. Adjust the page size and image for the document as shown in the following image.



3. Click on **File** and **Print Setup**.

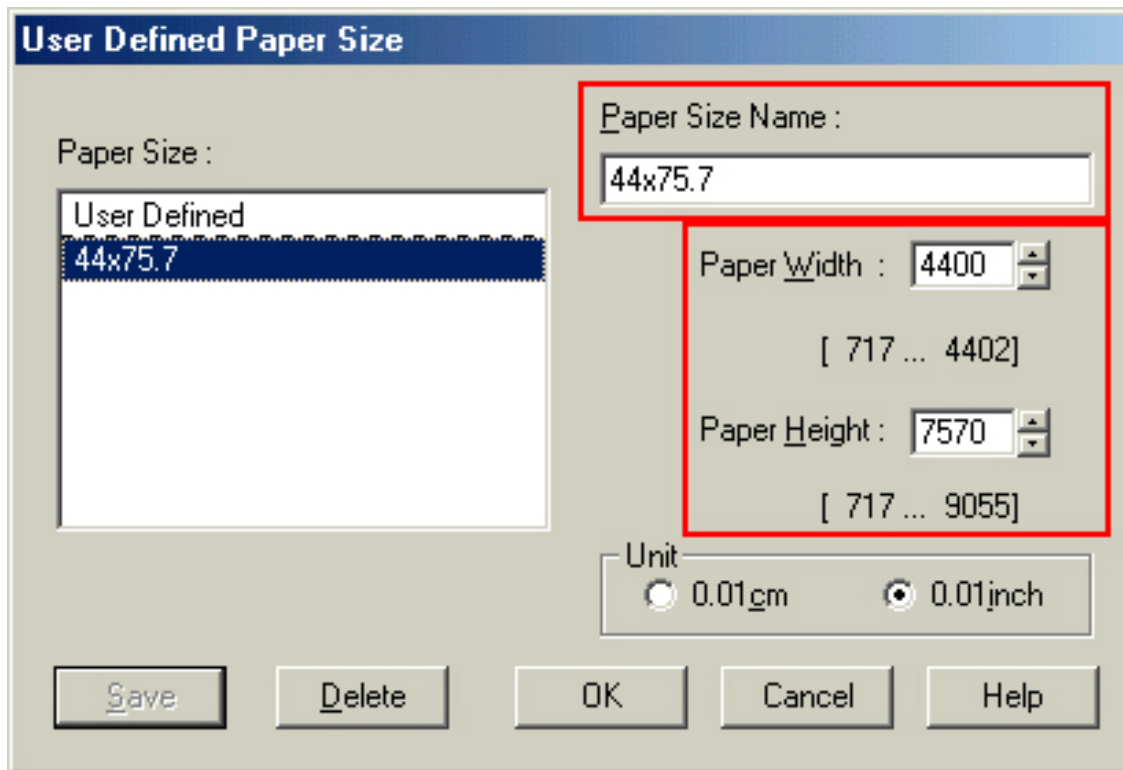
4. Click on the **Paper Tab**. The following appears.



5. Set the **Paper Source** to **Roll Paper (Banner)** and also enable **Save Roll Paper**.

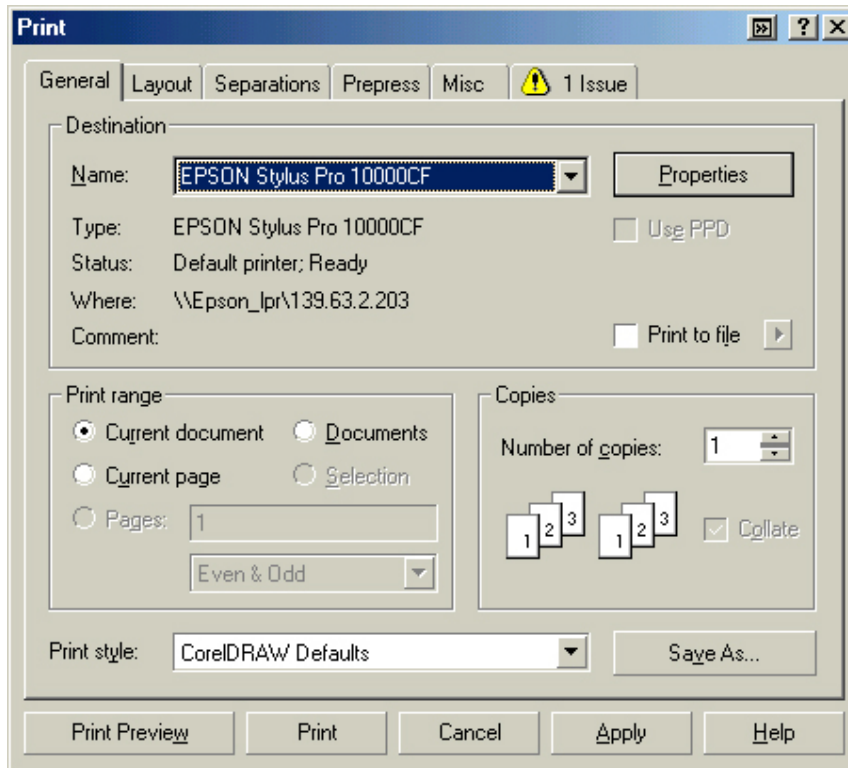


- When creating the custom page size, divide the banner size by a value that will make it less than the printer maximum custom page size. In this example we take  $(227/3 = 75.7)$ , therefore the custom page size created would be 44x75.7 inches. The reason for this is to save media.

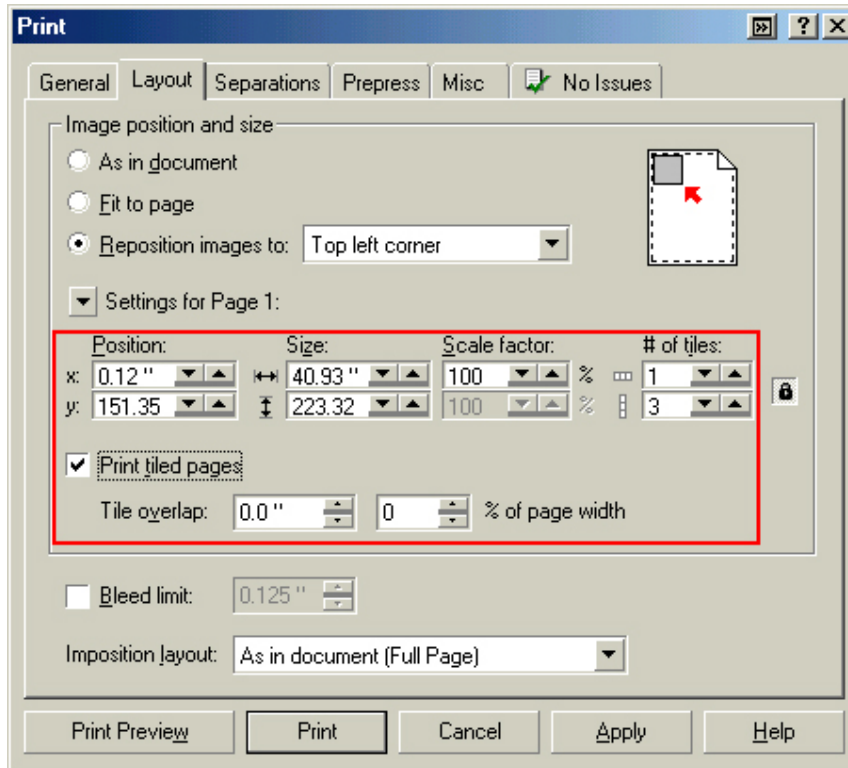


- After setting the custom page size and other driver settings (media type, resolution, etc.), click **OK**. This will bring you back to the document.

8. At this point, click **File** then **Print**. CorelDRAW will then run a pre-flight check and will show the following window.



9. Click on the **Layout Tab** and enable **Print Tiled Pages** and set any additional parameters as you see fit.



10. At this point you could check other tab settings (if necessary) and click **Print Preview** (recommended) if you want to see how the file will be printed or **Print** to output the file to your printer.

For all other applications, please refer to your software documentation for information on maximum custom page sizes for documents, banners or tiling prints.

# EPSON Product Support Bulletin

Date:	09/25/2002	Originator:	MS
PSB #:	PSB.2002.09.004	Authorization:	<i>MS</i>
Reference:	N/A	Total Pages:	
Product(s):	EPSON Stylus Pro 9000, 9500, 9600, 7000, 7500, 7600, 10000, 10600, 5000, 5500 and Stylus Color 3000 Printers		
Subject:	PostScript Printing Support for Mac OS X Native Mode		

This bulletin provides instructions for installing and configuring a Mac OS X Client with your existing EPSON hardware or software RIP. If your EPSON Professional Wide Format printer was bundled with one of the RIP packages listed below, or if you had purchased the RIP as an option, then you can configure a Mac OS X Client with OS Version 10.2 and above for PostScript printing by simply installing the appropriate RIP PPD.

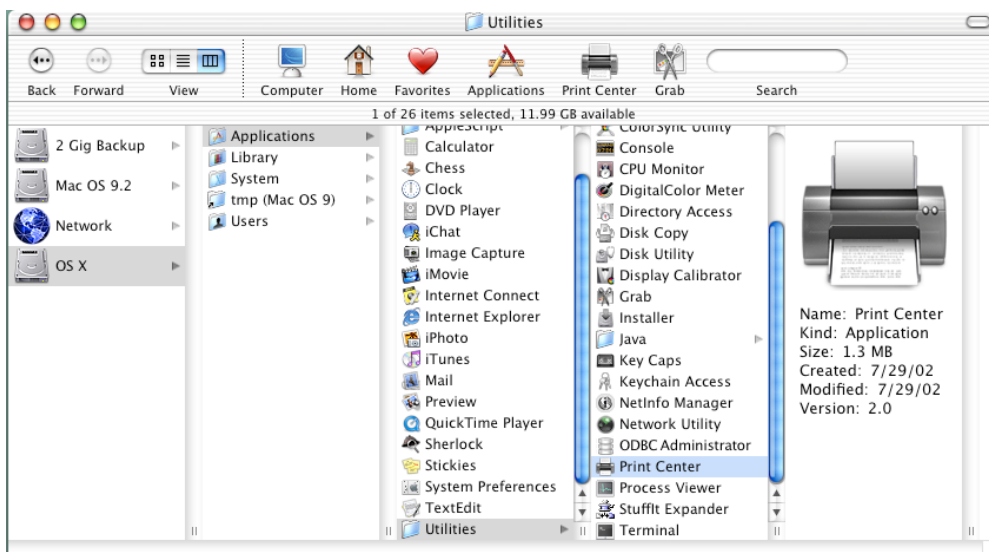
- EFI RS 5000 LX Series – Stylus Pro 5000 printer
- EFI RS 5100 X2 Series - Stylus Pro 9000, 7000, 9500 and 7500 printers
- Fiery Spark Designer – Stylus Pro 5500 printer
- Fiery Spark Professional 1.0 – Stylus Pro 5500 and Stylus Pro 10000ARC/DYE printers
- Fiery Spark Professional 2.0 – Stylus Pro 9600UCM/7600UCM printers
- EPSON StylusRIP - Stylus Color 3000 and Stylus Pro 5000 printers

## Installation Instructions:

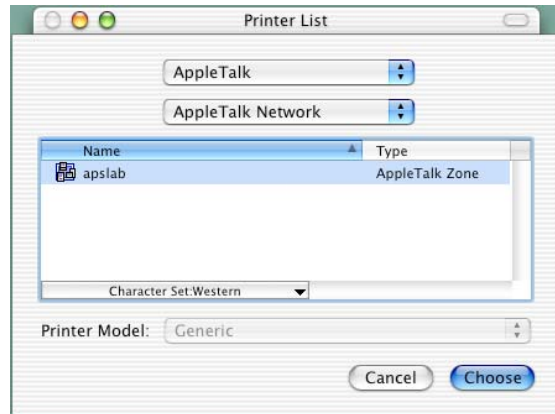
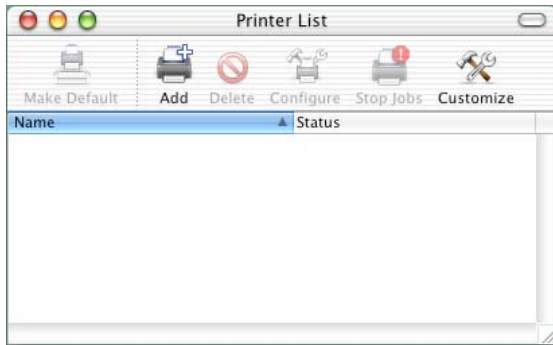
Setup your existing RIP Server as per the instructions provided in the User's Guide that came with your RIP. To setup a Mac OS X Version 10.2 Client follow the instructions below. There are two ways you can add a PPD and configure your printer in OS X, **AppleTalk** or **IP Printing**.

### AppleTalk Installation:

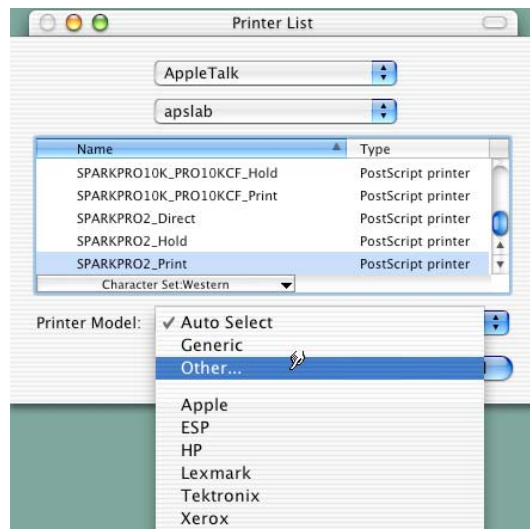
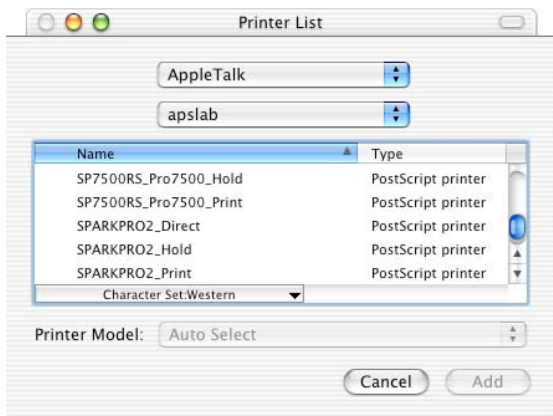
1. Open the **Print Center**, which can be found on your hard disk driver under **Applications - Utilities**



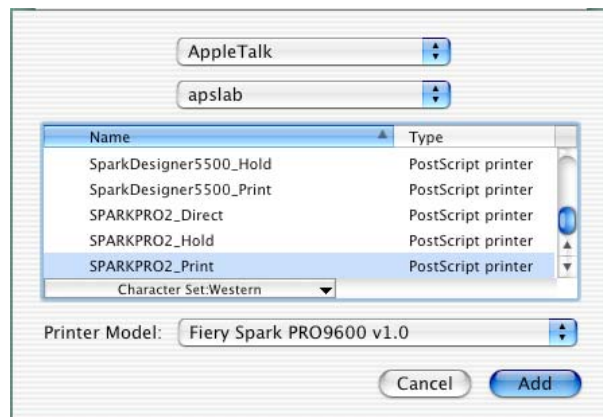
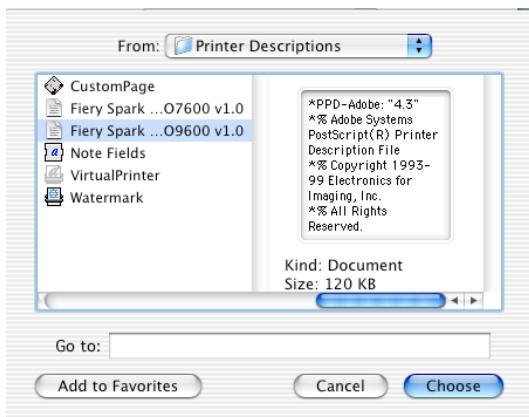
2. Click on the **Add** button. Then select **AppleTalk** from the top sub-menu and your **AppleTalk** zone if applicable.



3. The **Print Center** should scan the network and find all your devices. Select your printer from the list and click on the **Printer Model** sub-menu. Select **Other** to continue.



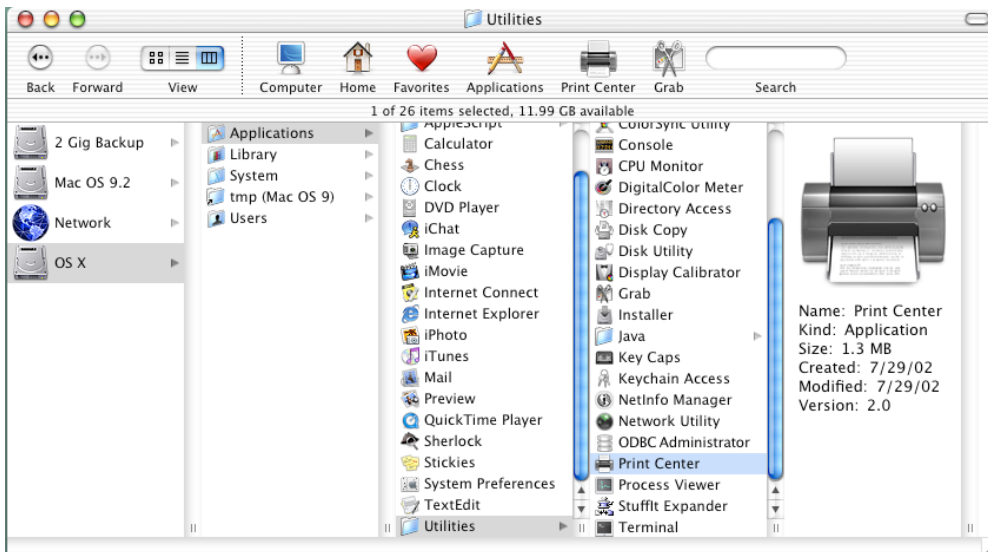
4. Navigate to the location of your PPD file. After selecting the PPD file it should reflect the name of the printer under the **Printer Model** section. Click on the **Add** button.



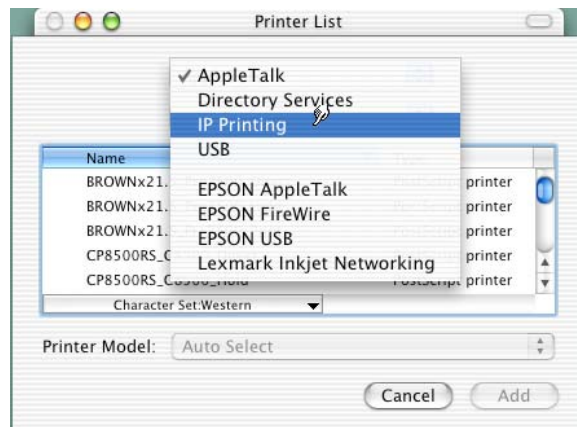
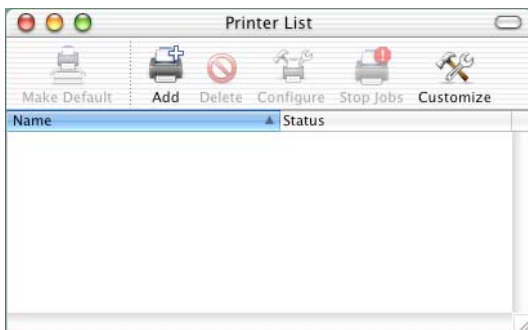
5. Repeat the process to add your additional queues. Your Mac OS X Client should now be ready to print.

## IP Printing Installation:

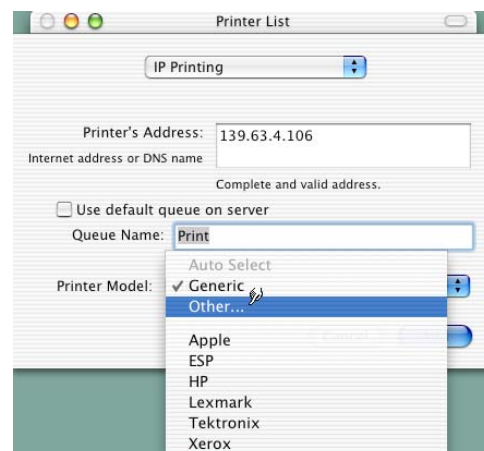
1. Open the **Print Center**, which can be found on your HDD under **Applications - Utilities**



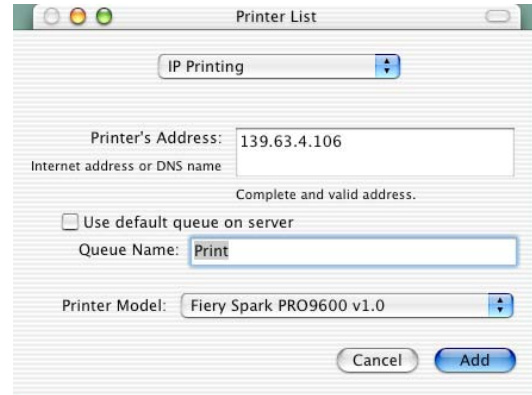
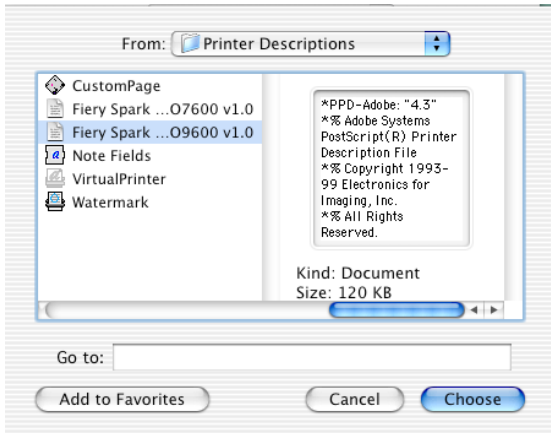
2. Click on the **Add** button and select **IP Printing** from the sub-menu.



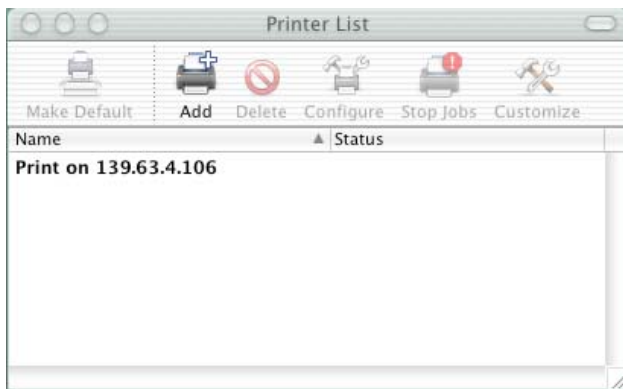
3. Enter the IP Address of the Postscript Server under **Printer's Address**. Uncheck the **Use default queue on server** and type in the queue you wish to add. Click on the **Printer Model** sub-menu and select **Other**.



4. Navigate to the location of your PPD file. After selecting the PPD file it should reflect the name of the printer under the **Printer Model** section. Click on the **Add** button.

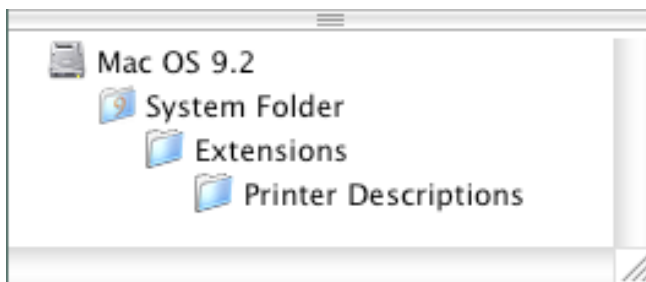


5. The Print Center should now show the Queue that you typed along with the IP address.



6. Repeat the process to add your additional queues. Your Mac OS X Client should now be ready to print.

Note: The StylusRIP does not have a separate folder on the CD to select the printer's PPD. In order to select the PPD it must be copied from another client's **Printer Description folder** as shown below (HDD - System folder - Extensions folder - Printer Description folder).



# EPSON PRODUCT SUPPORT BULLETIN

---

**Date:** 8/8/02  
**PSB #:** PSB.2002.01.001A  
**Reference:** PSB.2002.01.001  
**Product(s):** EPSON Stylus Color 3000, Stylus Pro 5000, 5500, 7000 Series, 7600 Series, 9000 Series, 9600 Series and 10000 Series  
**Subject:** Maximum Printable Area Limits for the EPSON Professional Graphic Printer line.

---

**Originator:** RR  
**Authorization:** *[Signature]*  
**Total Pages:** 12

This bulletin was created to inform you of the maximum custom page sizes allowable for EPSON Professional Graphic products. The tables below show the maximum page sizes allowable for the EPSON Professional Graphics printer line (Desktop and Large Format). Although this document is meant as a guideline for the maximum page size allowable for each printer, it does not include printable area (margin) information. Please refer to your user guide for additional information regarding the printable area (margins) for your particular printer. There are 3 aspects that effect how long of a page your printer can output. Those 3 items are:

1. Operating System.
2. Driver Specification.
3. Software application(s) being used.

## **Maximum custom page size allowable per operating system (for Epson standard driver):**

	Stylus Color 3000	Stylus Pro 5000	Stylus Pro 5500	Stylus Pro 7000	Stylus Pro 7500	Stylus Pro 7600	Stylus Pro 9000	Stylus Pro 9500	Stylus Pro 9600	Stylus Pro 10000 Series
Macintosh OS	44 in.	44 in.	44 in.	90.5 in.	90.5 in.	90.5 in.	90.5 in.	90.5 in.	90.5 in.	90.5 in.
Win 9x/Me	44 in.	44 in.	44 in.	90.5 in.	90.5 in.	90.5 in.	90.5 in.	90.5 in.	90.5 in.	90.5 in.
Win NT 4.0/2000/XP	44 in.	44 in.	44 in.	590.5 in.	590.5 in.	590.5 in.	90.5 in.	590.5 in.	590.5 in.	590.5 in.

Print jobs being sent through the Epson standard print driver should be in the RGB format in order for color management to be utilized properly.



## **Maximum custom page size allowable for EPSON PostScript options (PPD):**

	Stylus Color 3000	Stylus Pro 5000	Stylus Pro 5500	Stylus Pro 7000	Stylus Pro 7500	Stylus Pro 7600	Stylus Pro 9000	Stylus Pro 9500	Stylus Pro 9600	Stylus Pro 10000 Series
EPSON Stylus RIP	44 in.	44 in.	N/A	N/A	N/A	N/A	N/A	N/A	N/A	N/A
EPSON Fiery RIP Station	N/A	44 in.	N/A	See NOTE 1	See NOTE 1	N/A	See NOTE 1	See NOTE 1	N/A	N/A
EPSON Fiery Spark Designer (Mac)	N/A	N/A	44 in.	N/A	N/A	N/A	N/A	N/A	N/A	N/A
EPSON Fiery Spark Professional	N/A	N/A	44 in.	N/A	N/A	See NOTE1	N/A	N/A	See NOTE1	See NOTE 1

Print jobs being sent through the Epson PostScript driver can be either RGB or CMYK format. Settings in the RIP will determine how color management is used.

## **Maximum page size allowable from software applications:**

	Stylus Color 3000	Stylus Pro 5000	Stylus Pro 5500	Stylus Pro 7000	Stylus Pro 7500	Stylus Pro 7600	Stylus Pro 9000	Stylus Pro 9500	Stylus Pro 9600	Stylus Pro 10000 Series
Adobe Photoshop 5.x/6.x	See NOTE 2	See NOTE 2	See NOTE 2	See NOTE 2	See NOTE 2	See NOTE 2	See NOTE 2	See NOTE 2	See NOTE 2	See NOTE 2
*Adobe Illustrator 8.x/9.x	227 in.	227 in.	227 in.	227 in.	227 in.	227 in.	227 in.	227 in.	227 in.	227 in.
QuarkXPress 4.x	48 in.	48 in.	48 in.	48 in.	48 in.	48 in.	48 in.	48 in.	48 in.	48 in.
*CorelDRAW 8.x/9.x	1,800 in.	1,800 in.	1,800 in.	1,800 in.	1,800 in.	1,800 in.	1,800 in.	1,800 in.	1,800 in.	1,800 in.

\* - These applications allow for tiling of print pages, therefore allowing you to print beyond the printers maximum page length limit and print to the applications limits. The printer driver must be set for Roll Paper (Banner) mode so that page breaks at the printer's maximum page length do not occur (in essence gives you a 0 margin for the bottom of the page). The Stylus Pro 5000/5500 however will give a slight page break at the 44 inch limit as these printers do not support banner mode. Also, printing certain elements from these applications may not utilize color management correctly/properly and may produce output color that is not expected.

**NOTE 1:**

- a. Under Win 9x/Me, the PPD limit is 129 inches.
- b. Under Windows NT, 2000 and XP, the PPD limit is 1771.6 inches (SP7000/9000 Series) and 1800 inches (SP7600/9600/10000 Series).
- c. Under Mac OS 8.x/9.x, the PPD limit is 273.06 inches.

**NOTE 2:**

Adobe Photoshop has a pixel limitation of 30,000 pixels, which means that a document created @ 300ppi can only reach a maximum page size of 100 inches (H and V). When sending jobs to the printer via the standard non-PostScript print driver, Photoshop looks at the input resolution of the printer driver and adjusts the page size accordingly. All Epson large format printers use 360dpi as the input resolution (this is the resolution data is rasterized at), therefore when printing from Photoshop, the maximum page length you will be able to output to any Epson large format printer using the standard Epson print driver would be 83.33 inches (30,000 pixels / 360dpi). As for the Epson desktop products, they rasterize data at 720dpi, therefore the maximum page length obtainable with the standard print driver would be 41.67 inches (30,000 pixels / 720dpi).

Also, under Photoshop 5.x/6.x for the Macintosh and Photoshop 6.x for the PC, the job will end up clipped if it is over the 83.3inch printer page limit. If you are using Photoshop 5.x for the PC, the print job will actually be truncated to fit within the printable area of the printer. Be advised that you may not get a page size error. It may be useful to enable the "print preview" function of your printer driver (if available) so that you do not waste unnecessary media.

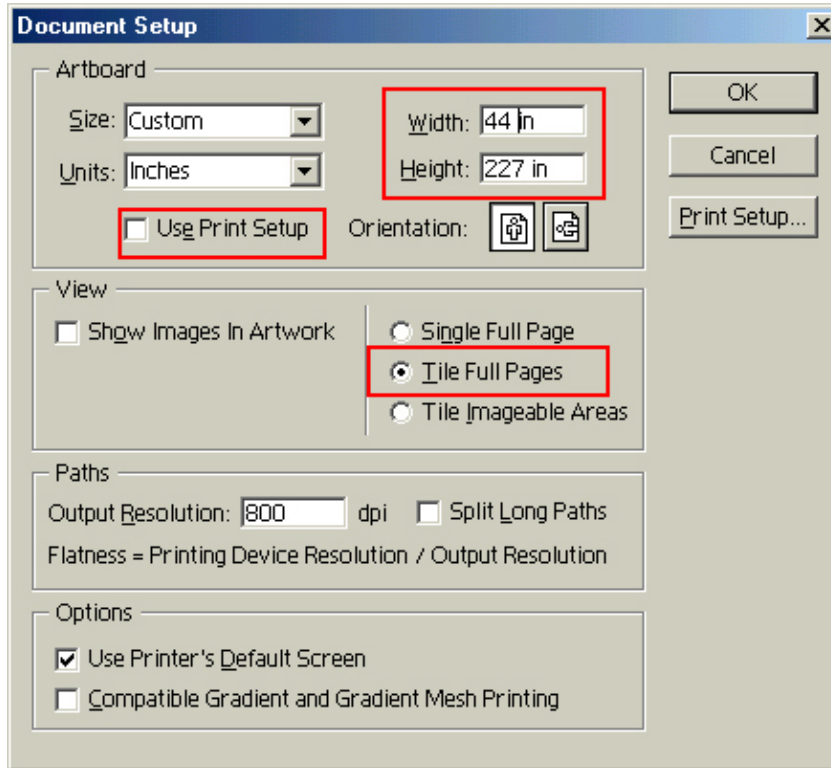
The only options for printing beyond the limitations is to save the file and print via an application that does not have the 30,000 pixel limit (may lose color management functions) or print the file through a PostScript RIP (which will allow for longer pages).

The following examples show how to setup banner printing from Adobe Illustrator 8.01 and CoreIDRAW 9 from the PC platform. The Macintosh versions of these applications should be very similar in function. Please refer to your software documentation for additional assistance.

## **Adobe Illustrator 8.01:**

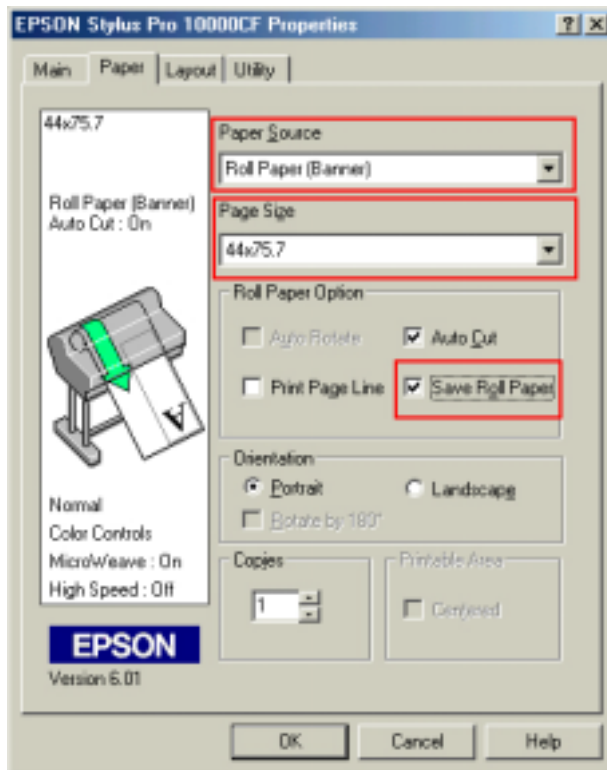
In this example, we are creating a banner, which is 227 inches (Illustrators max. page setup).

1. Launch Illustrator and open or place your file in the page layout.
2. Click on **File**, then **Document Setup**. The following screen appears.



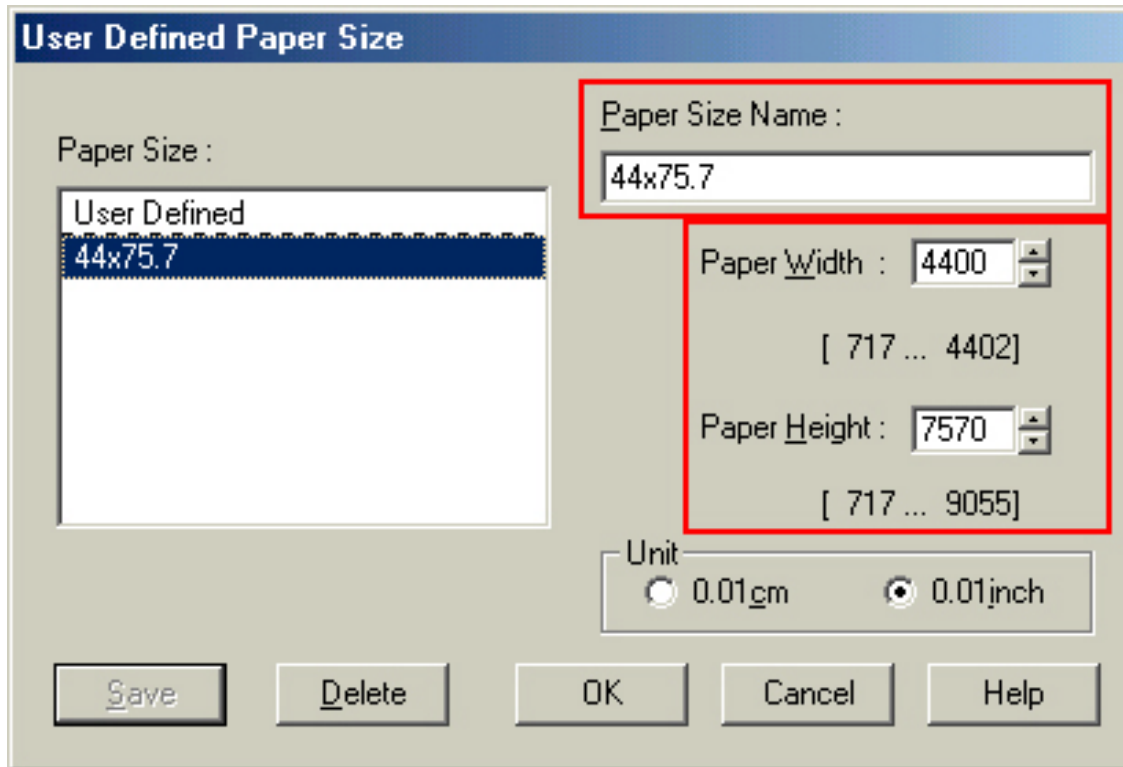
3. Uncheck **Use Print Setup**, enable **Tile Full Pages** and create the page size (in our example we used 44x227 inches).
4. Click, **Print Setup**. This will bring up the print driver.

5. Click on the **Paper Tab**. The following appears.

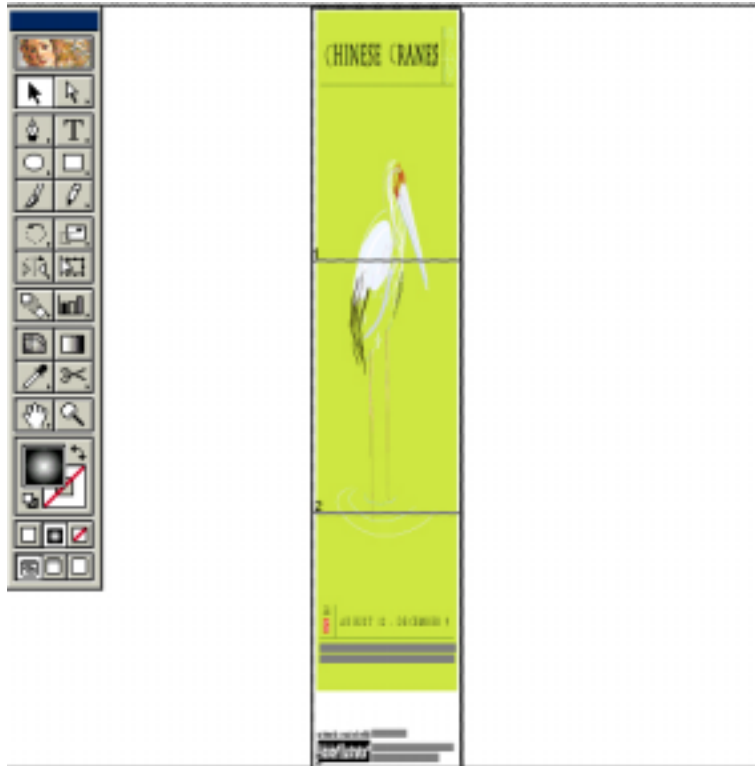


6. Set the **Paper Source** to **Roll Paper (Banner)** and also enable **Save Roll Paper**.

- When creating the custom page size, divide the banner size by a value that will make it less than the printer maximum custom page size (not necessary for OS/Drivers that support 590.5 inches). In this example we take  $(227/3 = 75.7)$ , therefore the custom page size created would be 44x75.7 inches. The reason for this is to save media.



8. After setting the custom page size and other driver settings (media type, resolution, etc.), click **OK**. This will bring you back to the document setup. The page should now show the following.



9. At this point you can and resize the image to fit within the printable area and print.

## **CorelDRAW 9:**

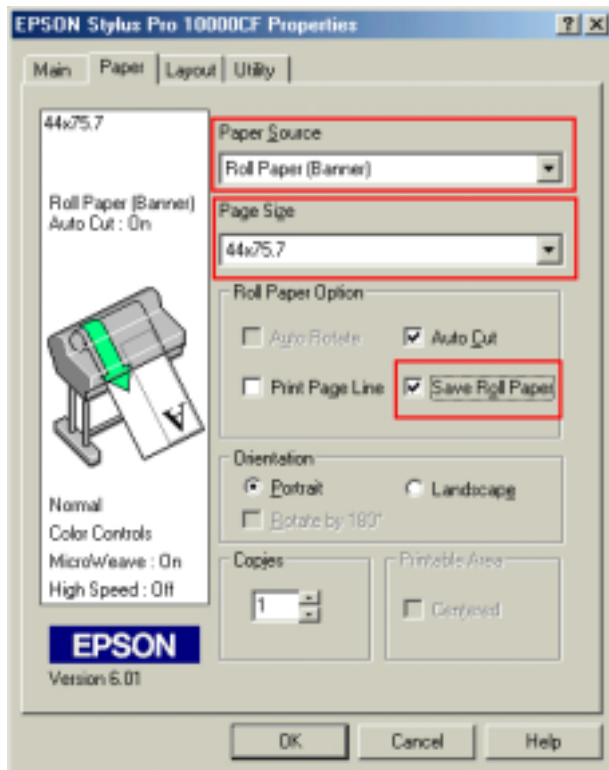
In this example, a banner is created at 227 inches.

1. Launch CorelDRAW and open or place an image in your page layout.
2. Adjust the page size and image for the document as shown in the following image.



3. Click on **File** and **Print Setup**.

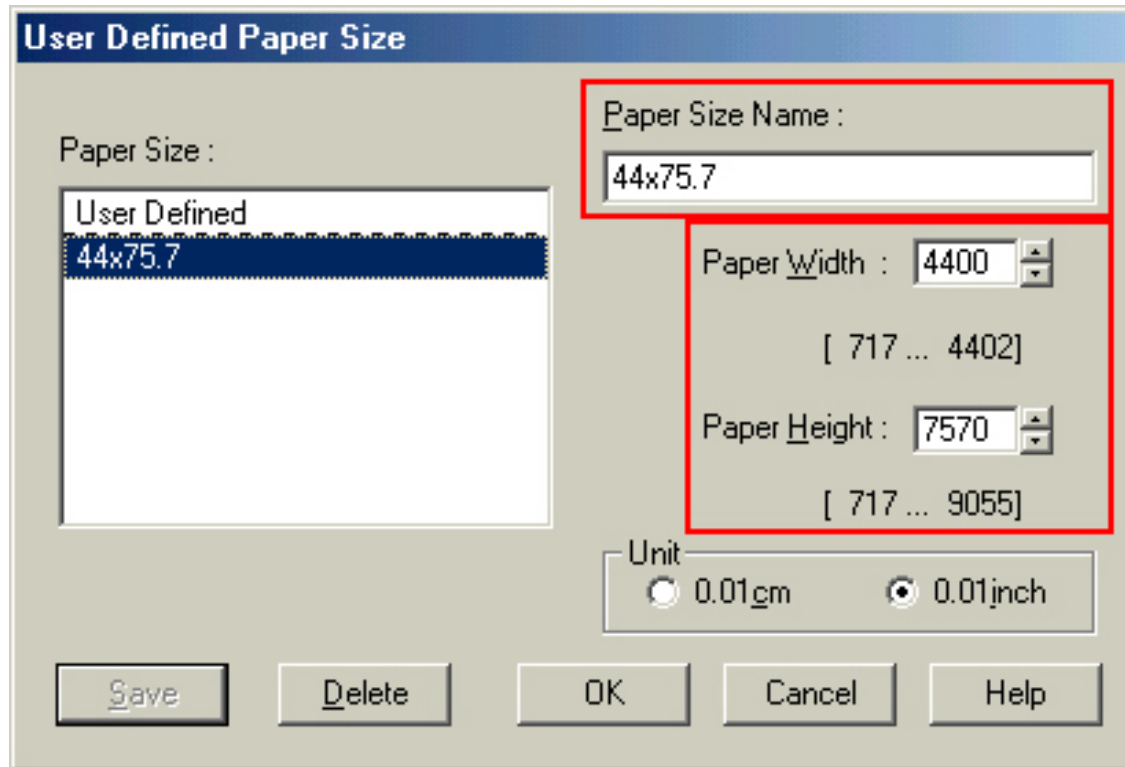
- Click on the **Paper Tab**. The following appears.



- Set the **Paper Source** to **Roll Paper (Banner)** and also enable **Save Roll Paper**.

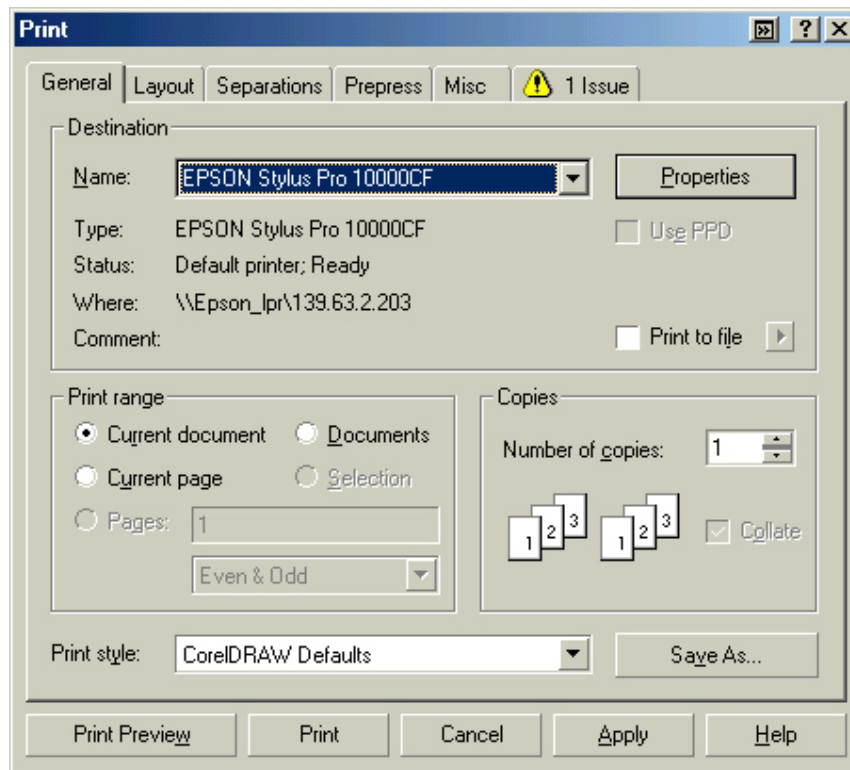


- When creating the custom page size, divide the banner size by a value that will make it less than the printer maximum custom page size (not necessary for OS/Drivers that support 590.5 inches, unless the document is beyond that size). In this example we take  $(227/3 = 75.7)$ , therefore the custom page size created would be 44x75.7 inches. The reason for this is to save media.

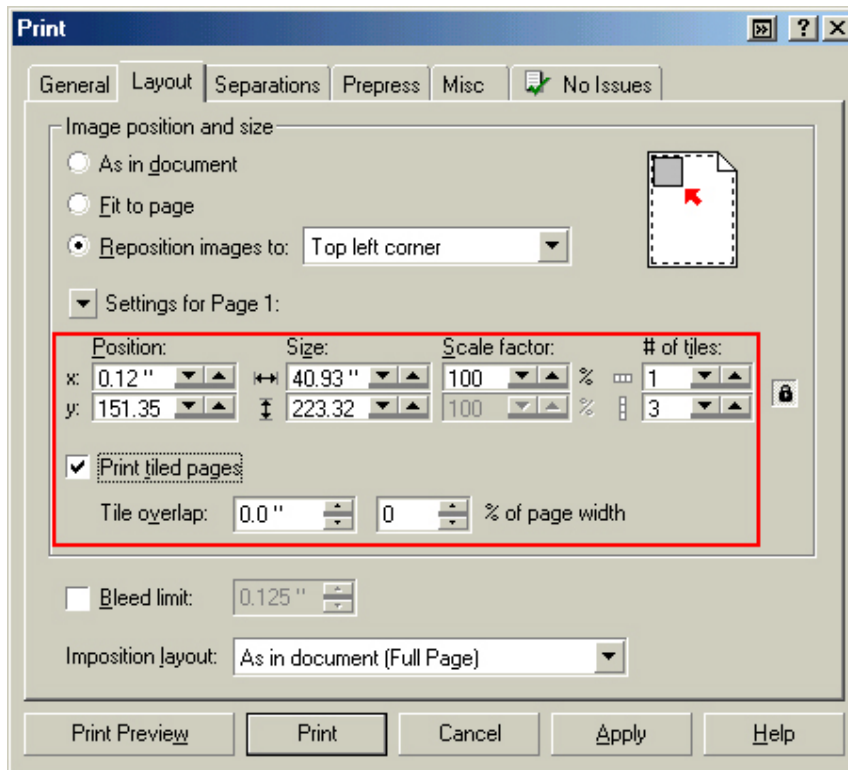


- After setting the custom page size and other driver settings (media type, resolution, etc.), click **OK**. This will bring you back to the document.

8. At this point, click **File** then **Print**. CorelDRAW will then run a pre-flight check and will show the following window.



9. Click on the **Layout Tab** and enable **Print Tiled Pages** and set any additional parameters as you see fit.



10. At this point you could check other tab settings (if necessary) and click **Print Preview** (recommended) if you want to see how the file will be printed or **Print** to output the file to your printer.

For all other applications, please refer to your software documentation for information on maximum custom page sizes for documents, banners or tiling prints.

# EPSON PRODUCT SUPPORT BULLETIN

Date: 11/21/2001

PSB No.: PSB.2001.11.002

Reference: N/A

Originator: RD/RR

Authorization: *AK*

Affected Product(s): Epson Stylus Pro 5000/5500/7000/7500/9000/9500/10000/10000CF

Subject: Windows XP Driver & Status Monitor 3 Installation Procedure

This bulletin describes Windows XP printer driver/Epson Status Monitor 3 installation procedures for the following Epson printer models.

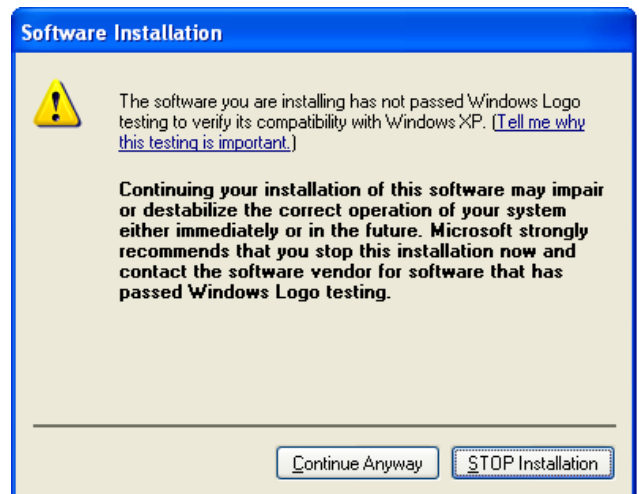
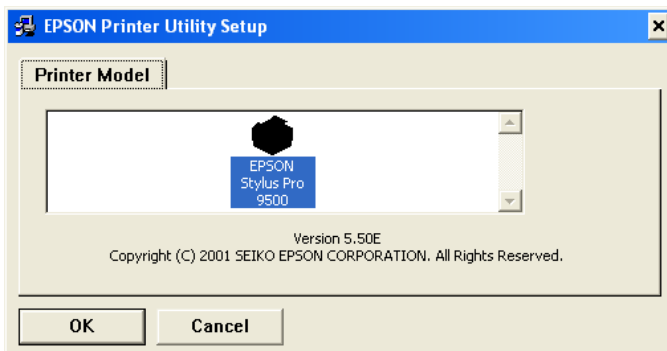
Model	Status Monitor 3	USB	IEEE 1394	Ethernet (optional)	Parallel
Stylus Pro 5000	N/A	N/A	Yes (optional)	Yes	Yes
Stylus Pro 5500	Not available	Yes	Yes (optional)	Yes	Yes
Stylus Pro 7000	Yes	Yes	Yes (optional)	Yes	Yes
Stylus Pro 7500	Yes	Yes	Yes (optional)	Yes	Yes
Stylus Pro 9000	N/A	N/A	Yes (optional)	Yes	Yes
Stylus Pro 9500	Yes	N/A	Yes (optional)	Yes	Yes
Stylus Pro 10000	Not available	Yes	Yes	Yes	Yes
Stylus Pro 10000CF	Not available	Yes	Yes	Yes	Yes

The appropriate Windows XP driver/Status Monitor 3 can be downloaded from Epson America's support website, at <http://support.epson.com/filelibrary.html>. During the download process, choose "Save this program to disk" option to save the files to your local hard disk drive. When you are ready to install your printer driver/ Status Monitor 3, **Power OFF** your printer and restart your computer. Run the self-extracting executable file from the saved location on your hard disk drive and follow the installation instruction on the screen for your specific connection type.

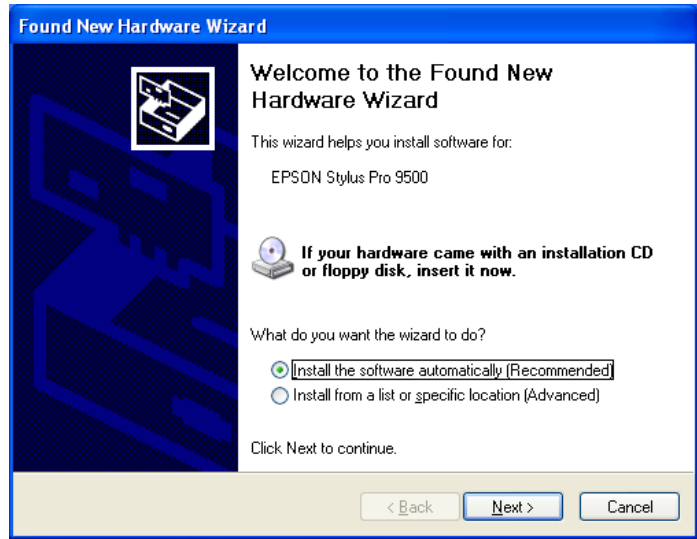
Note: The screen shots shown in this bulletin reflect the Stylus Pro 9500 printer, but the installation instruction are identical for all of the printer models listed above.

## Instructions for USB and Parallel Connection

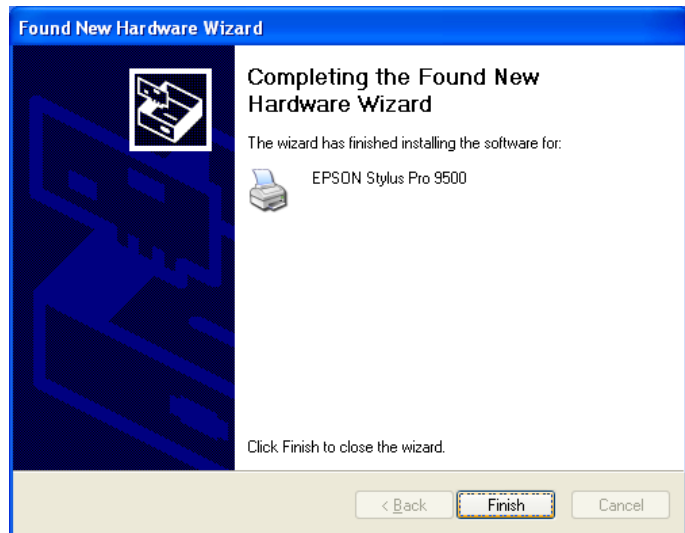
1. At the EPSON Printer Utility Setup screen highlight your printer then click OK. Next, you will see the progress bar followed by the Windows Logo verification screen. Click on *Continue Anyway* option to continue.



- As instructed at following EPSON Printer Utility Setup screen **Power ON** your printer. Your printer will be detected automatically. Select Install the software automatically (Recommended) option then click NEXT to continue at the Found New Hardware Wizard screen.



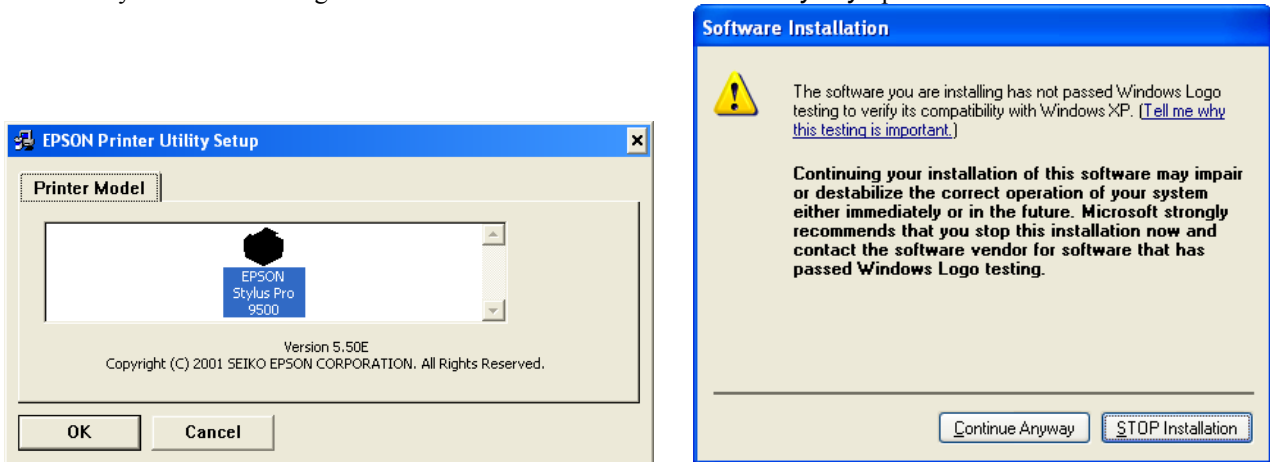
- Your will be prompted with Windows Logo verification screen again, Click on *Continue Anyway* option to proceed to the next step. After the driver files have been copied to you local hard disk drive, click on Finish to complete the driver installation.



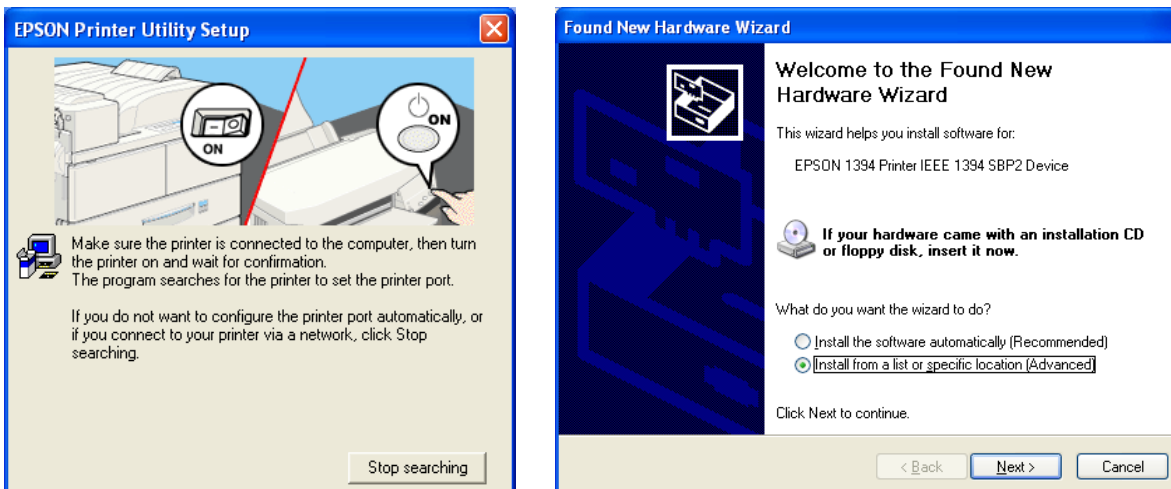
- To install Epson Status Monitor 3 follow the instructions under section heading **Installation Procedure for Epson Status Monitor 3.**

## Instructions for IEEE 1394 Connection

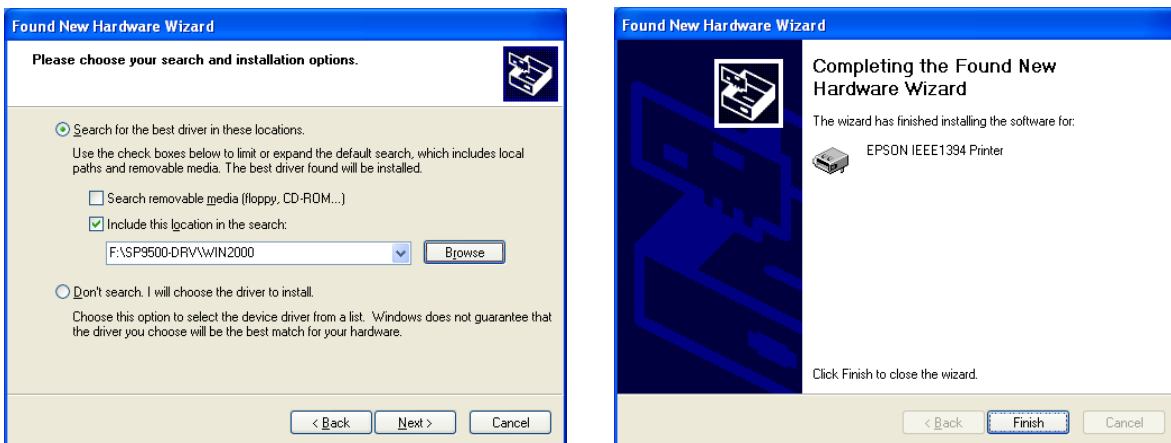
1. At the EPSON Printer Utility Setup screen highlight your printer then click OK. Next, you will see the progress bar followed by the Windows Logo verification screen. Click on *Continue Anyway* option to continue.



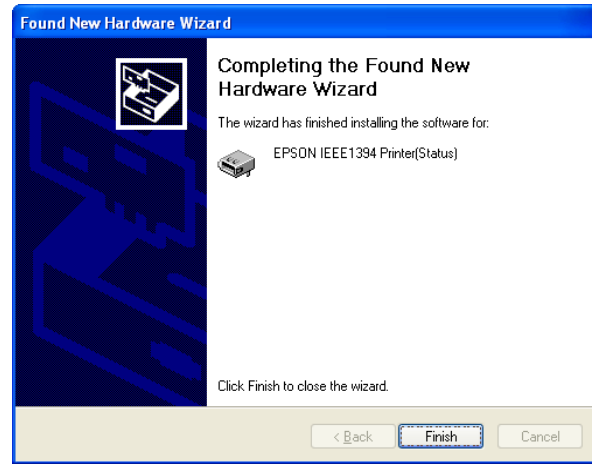
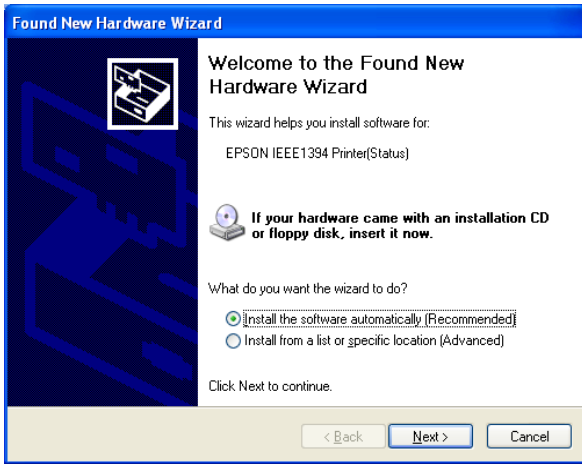
2. As instructed at the following EPSON Printer Utility Setup screen **Power ON** your printer. The IEEE 1394 card will be detected automatically. At the Found New Hardware Wizard screen click on Install from a list or specific location (Advanced) option then click on Next to start the installation of the IEEE 1394 device driver.



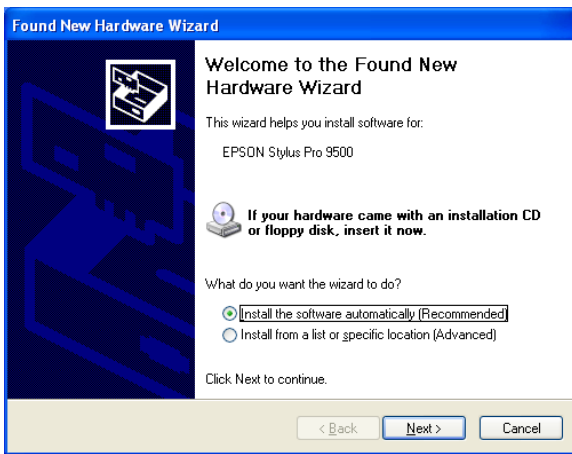
3. On the screen shown below, uncheck Search removable media, click on Browse and navigate to the location of the extracted driver files (usually under C:\Epson\ ) and point to the WIN2000 folder. Select the folder then click on Next to continue and finish the IEEE 1394 driver installation.



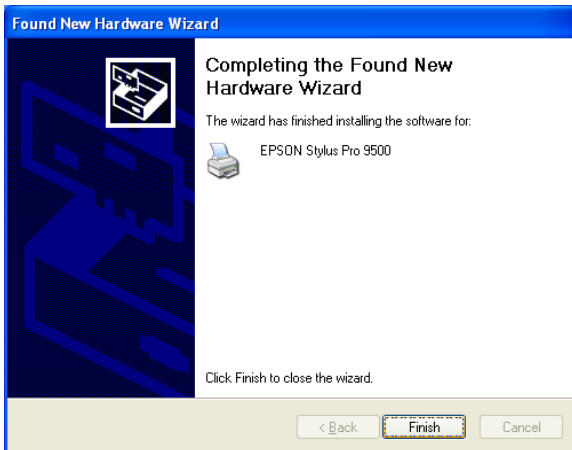
- The following Found New Hardware Wizard screen for IEEE 1394 status will be displayed. Select **Install the software automatically (Recommended)** option selected and click on **Next** to continue. After the driver files have been copied to you local hard disk drive, click on **Finish** to complete the driver installation.



- After the IEEE 1394 driver installation is completed on the following Found New Hardware Wizard screen select, **Install the software automatically (Recommended)** option then click on **Next** to start the printer driver installation. Next, you will see the progress bar followed by the Windows Logo verification screen. Click on **Continue Anyway** option to continue.



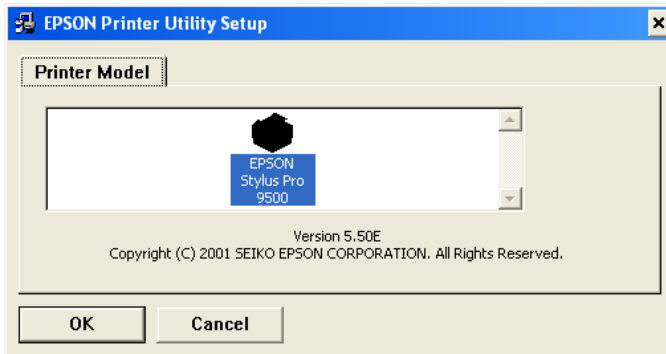
- After the driver files have been copied to you local hard disk drive, click on **Finish** to complete the driver installation.



- To install Epson Status Monitor 3 follow the instructions under section heading **Installation Procedure for Epson Status Monitor 3.**

## Instructions for Ethernet Connection

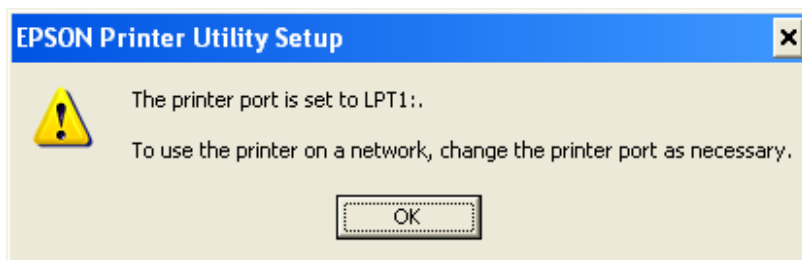
1. At the EPSON Printer Utility Setup screen highlight your printer then click OK. Next, you will see the progress bar followed by the Windows Logo verification screen. Click on *Continue Anyway* option to continue.



2. At this point DO NOT POWER On your printer and at the EPSON Printer Utility Setup screen click on Stop searching button to continue with the installation. Next, you will see the progress bar followed by the Windows Logo verification screen. Select *Continue Anyway* option.

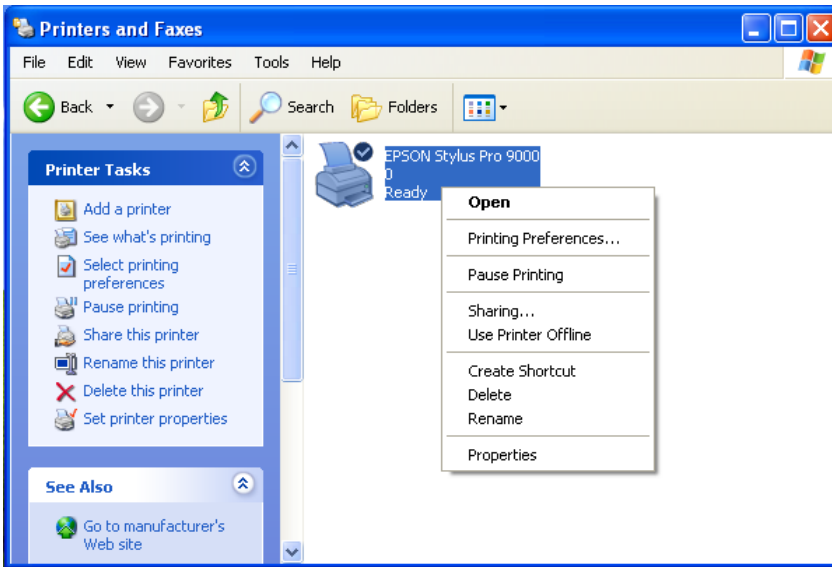


3. On the next screen you will be notified that the printer has been set to LPT1, click on OK to finish the driver installation.

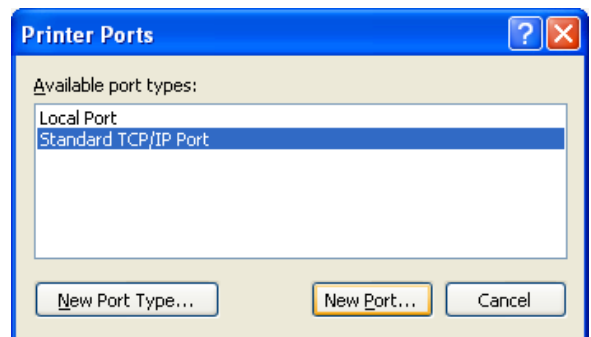
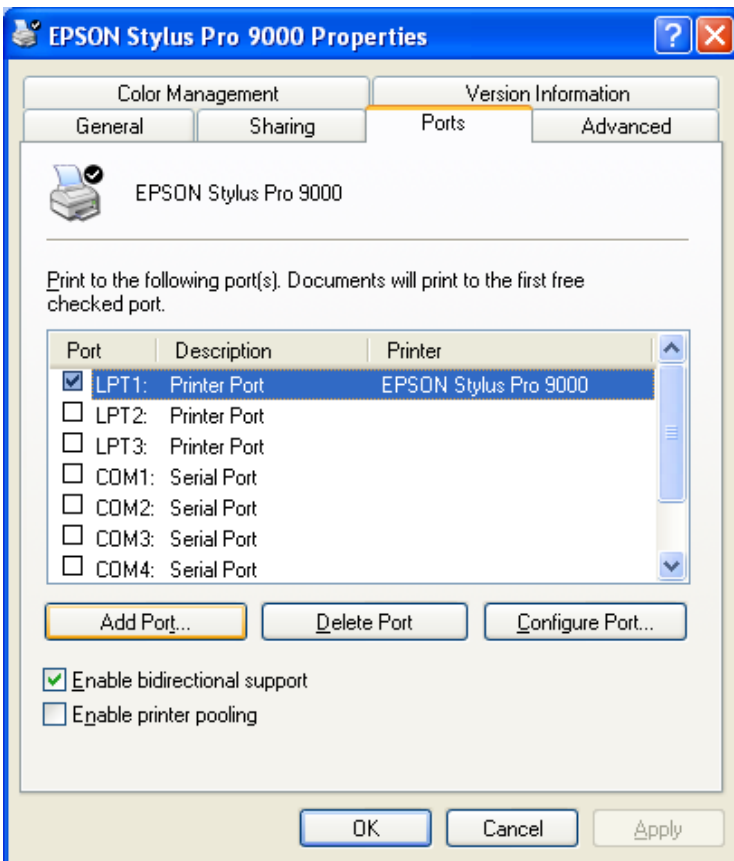




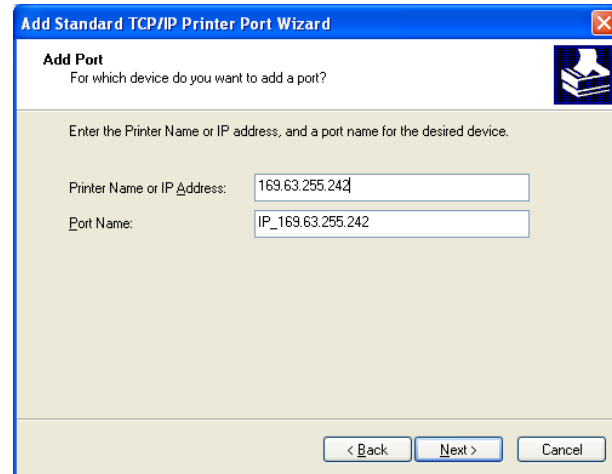
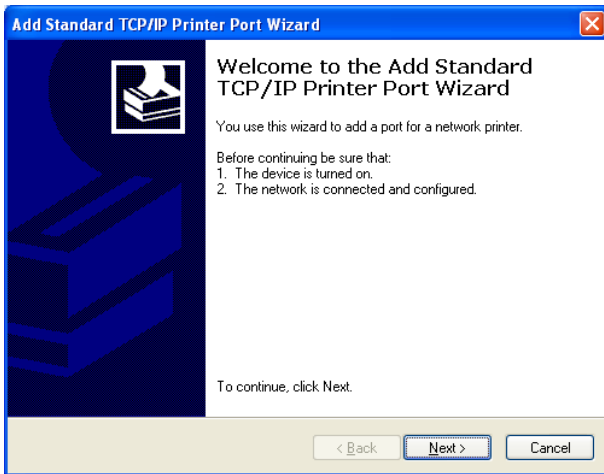
4. **Power ON** your printer next, then you will need to redirect the port to the Type B Ethernet card's IP address. Click on the Start button, then Control Panel followed by Printers and Other Hardware then go to Printers and Faxes. Right click on the printer icon and choose Properties from the pop-up menu.



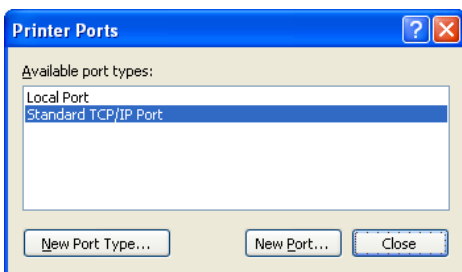
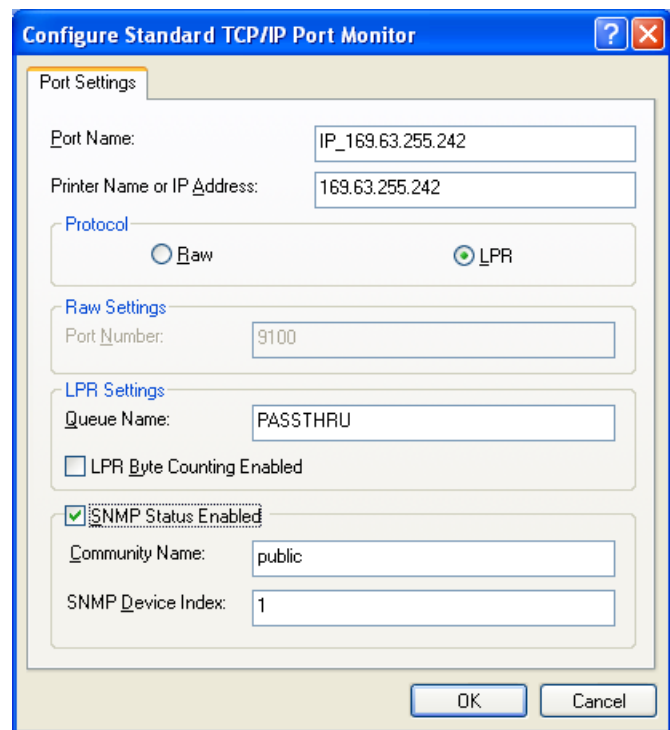
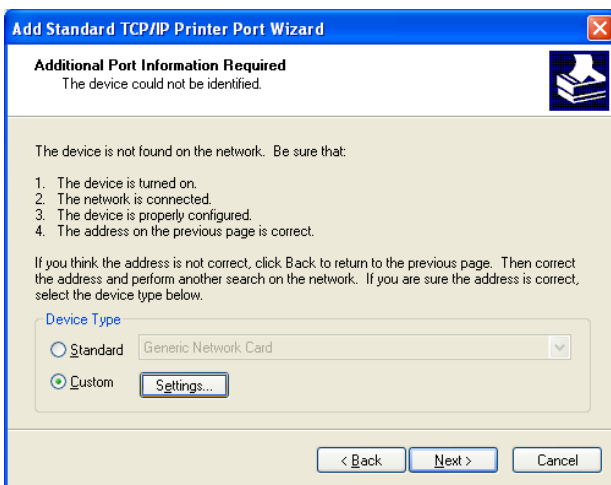
5. At the printer properties screen, click on Ports and then on the Add Port... button. On the Printer Ports screen, highlight Standard TCP/IP Port and click on New Port.



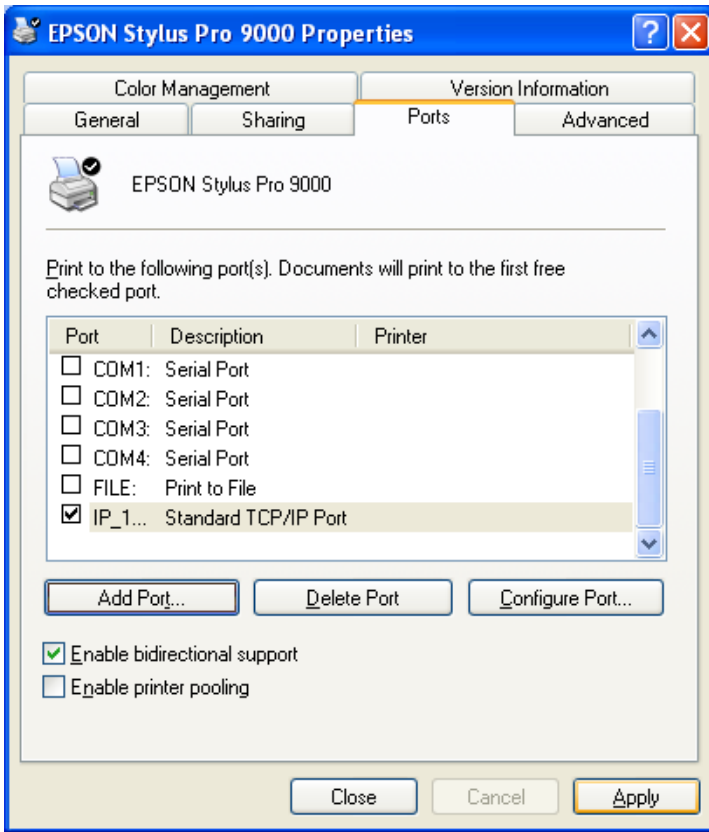
6. At the Add Standard TCP/IP Printer Port Wizard, screen click on **Next**. Then on the next screen type the Type B Ethernet card's IP address. Check with your System Administrator for the correct IP address assigned to the Epson Type B Ethernet card on your network.



7. If Windows identifies the Epson card automatically, click **Finish** at the Completing the Add Standard TCP/IP Printer Port Wizard. If your card is not identifies as an Epson network card automatically, click on **Custom** and then **Settings**. On the next screen select **LPR**, type **PASSTHRU** as the Queue Name, check **SNMP Status Enabled** and click **OK**. Click **Next** on the Add Standard TCP/IP Printer Port Wizard screen to continue with the installation, and then click **Finish** on the next screen. Click **Close** at the Printer Ports screen.



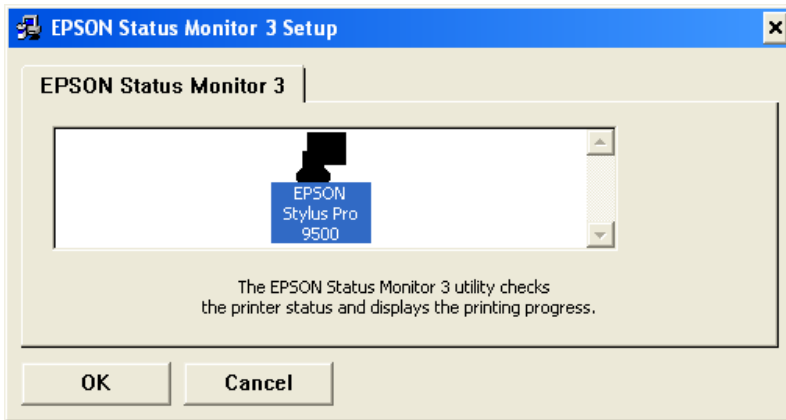
8. On the next screen click on **Apply** and then on **Close** to finish the installation. Your printer driver installation has been completed and the printer is ready to print.



9. To install Epson Status Monitor 3 follow the instructions under section heading **Installation Procedure for Epson Status Monitor 3.**

## Installation procedure for Epson Status Monitor 3

1. At the EPSON Status Monitor 3 setup screen highlight your printer then click OK. Next, you will see the progress bar followed by a window indicating that EPSON Status Monitor 3 is complete.



# EPSON PRODUCT SUPPORT BULLETIN

---

---

Date: 09/06/2001

PSB No.: PSB.2001.09.002

Reference: N/A

Originator: RR

Authorization: 

Affected Product(s): Stylus Pro 7000 Series, 9000 Series and 10000 Series Large Format Printers

Subject: Printer Connectivity Issue due to Incorrect Model Name Selection – Printer Reports Off-Line

---

---

## Issue Description:

- MAC Connection:** When connecting a Stylus Pro 7000 Series, 9000 Series or 10000 Series to an Apple Macintosh via USB, Ethernet or FireWire, the Macintosh's System Profiler sees the connection, but when going into the Chooser the connection does not show up when the appropriate printer driver is selected.
- PC Connection:** When connecting a Stylus Pro 7000 Series, 9000 Series or 10000 Series to a Windows PC via USB, Ethernet or FireWire and while attempting to print, an error message ("Printer Off-Line" or "Communication Error" on PC side) or ("Command Error" or "0002000B" on the LCD display of the printer) occurs.

## Solution:

After verifying that all connections and port settings are good (on System and Printer) and that the printer is on-line, check that the model name of the printer is set correctly. To do this, follow these steps:

- Shut printer off. Open the front cover.
- While holding down the [SelcType] + [Paper Feed +] buttons, power the unit on.
- The LCD display will then show the printer model name (it will show **US** and International model names). The following are the names that will show for each model type. The model name should match the driver selection.

### SP7000 Series Names:

Stylus Pro 7000 (US name)

Stylus Pro 7500 (US name)

PM-7000 (International name)

MC-7000 (International name)

### SP9000 Series Names:

Stylus Pro 9000 (US name)

Stylus Pro 9500 (US name)

PM-9000 (International name)

MC-9000 (International name)

### SP10000 Series Names:

Stylus Pro 10000 (US name)

Stylus Pro 10000CF (US name)


PM-10000 (International name)

MC-10000 (International name)

- If the incorrect model name selection appears, shut the unit off and repeat step 3 until the correct model name shows.
- Once the proper name shows up, power the unit off, wait 15 seconds, close the front cover and power the unit back on.
- Once the printer is in a ready state, make the appropriate driver selection on your computer system. At this point the printer connection should work.

# EPSON PRODUCT SUPPORT BULLETIN

---

<b>Date:</b>	05/29/01	<b>Originator:</b>	LHD/DA
<b>PSB #:</b>	PSB.2001.08.006	<b>Authorization:</b>	
<b>Reference:</b>	TE00-117 Rev.C	<b>Total Pages:</b>	2
<b>Product(s):</b>	Stylus Pro 9000 / 7000, Stylus COLOR 900, Expression 1640XL / 836XL / 1600, Stylus RIP		
<b>Subject:</b>	Incompatibility with FireWire 2.1 File and OS 9.0.1 or Later		

---

This bulletin was created to inform you of an incompatibility with the FireWire 2.1 extensions and Mac OS 9.0.1 or later.

## **Problem:**

- When the FireWire extensions (FireWire Enabler ver. 2.1 and FireWire Support ver. 2.1) are installed in a PowerPC based Mac (PCI-Bus model) without built in FireWire support running OS 9.0.1 or later, the following system error occurs after restarting the system:

<p>Sorry, a system error occurred. Illegal instruction To temporarily turn off extensions, restart and hold down the shift key</p>
--

## **Effected Products:**

Ink-Jet Printers:

Model Name	Driver Version
Stylus Pro 9000	Rev. 6.3aE
Stylus Pro 7000	Rev. 6.3aE
Stylus Color 900	Rev. 6.3aE
Epson Stylus Driver Updater *1	Rev. 1.0aE / 1.1aE

Scanner:

Model Name	Driver Version
Expression 1640XL	Rev. 1.7aE
Expression 836XL	Rev. 1.7aE
Expression 1600	Rev. 1.7aE

Stylus RIP:

Model Name	Driver Version
Stylus RIP	Vol. 1.4

## **Action Required:**

*Please follow the procedure below in order to delete the FireWire files from the system:*

1. Insert the Mac OS bootable CD in your CD ROM drive
2. Reboot the system while holding down the C key on the Keyboard
3. After the system is rebooted trash the FireWire Enabler and the FireWire Support files from the Extensions Folder
4. Restart the system normally

**NOTE:**

*The FireWire CD will contain the updated version of the extensions listed above by the end of July 2000.*

# EPSON PRODUCT SUPPORT BULLETIN

Date: 7/26/2001

PSB No.: PSB.2001.08.003

Reference: TE01-045 Rev. A

Originator: JD, RR, TC & MS

Authorization: *JS*

Affected Product(s): EPSON Pro Graphic Printers

Subject: Compatibility Chart for Macintosh OS X Classic

This bulletin provides information on compatibility for EPSON's Pro Graphic printers running in Macintosh OS X Classic mode. Mac OS X provides the Classic environment mode for Mac OS 9 compatible applications and device drivers. Classic mode will require Mac OS 9.1 system software. To setup Classic mode follow the steps below:

1. First install or upgrade your Macintosh system to OS 9.1 before installing OS X (for details refer to Apple's OS X documentation).
2. To start in Classic mode, click the **Classic** icon in System Preferences. To find *System Preferences* go to the **Apple Menu** or click on the icon in the **Dock** bar on the desktop. Classic mode can also be set up to start automatically during the log in process. (Refer to your Apple documentation for installation and operation of Macintosh OS X Classic and 9.1).
3. To run a Classic application, just double-click on it or a document created with the application.

**A) The following Epson models are supported in OS X Classic mode when using the connector type(s) described in the chart below.**

Model	Driver Version	Connector Type
Stylus Color 3000	5.69E	Ethernet I/F
Stylus Pro 5000	5.69E	Ethernet I/F
Stylus Pro 5500	6.61E	USB/Ethernet I/F
Stylus Pro 7000	6.63E	USB/Ethernet I/F
Stylus Pro 7500	6.73E	USB/Ethernet I/F
Stylus Pro 9000	6.30E	Ethernet I/F
Stylus Pro 9500	6.73E	Ethernet I/F
Stylus Pro 10000/10000CF	6.63E	USB/Ethernet I/F

**Note:**

1. **MAC OS X Classic mode supports USB-native and network-capable devices. Classic mode does not support MAC Serial, SCSI or FireWire connected devices.**
2. **Printers using a Fiery Rip Station for PostScript printing are not yet supported at this time.**
3. **Printers using Stylus Rip with Adobe PostScript drivers are not yet supported at this time.**

**B) The following models are not supported in OS X Classic when using the connector type(s) described in the chart below.**

Model	Connector Type
Stylus Color 3000	Serial/Parallel-to-USB adapter/FireWire (IEEE 1394)
Stylus Pro 5000	Serial/ Parallel-to-USB adapter/FireWire (IEEE 1394)
Stylus Pro 5500	FireWire (IEEE 1394)
Stylus Pro 7000	FireWire (IEEE-1394)
Stylus Pro 7500	FireWire (IEEE-1394)
Stylus Pro 9000	Serial/Parallel-to-USB adapter/FireWire (IEEE 1394)
Stylus Pro 9500	Serial/Parallel-to-USB adapter/FireWire (IEEE 1394)
Stylus Pro 10000/10000CF	FireWire (IEEE-1394)



# EPSON PRODUCT SUPPORT BULLETIN

**Date:** 6/26/01

**PSB No.:** PSB 2001.06.004

**Reference:** N/A

**Originator:** TC/RR

**Authorization:** 

**Affected Product(s):** SC3000, SP5000, SP5500, SP7000, SP7500, SP9000, SP9500, SP10000 DYE, and SP10000 ARC

**Subject:** Current Driver Location for C823722 EPSON IEEE 1394 (FireWire) Type B Interface Card for Windows 2000/Me/Macintosh Operating Systems

This bulletin provides information on where to find the most current driver for the EPSON C823722 - IEEE 1394 (FireWire) Type B Interface Card for the following EPSON Professional Graphics Inkjet Printers with appropriate Operating Systems: SC3000, SP5000, SP5500, SP7000, SP7500, SP9000, SP9500, SP10000DYE, and SP10000ARC.

1. Windows Requirements: The EPSON C823722 - IEEE 1394 (FireWire) Type B Interface Card only supports factory preinstalled full versions of Windows 2000 and Windows Me Operating Systems
2. Macintosh Requirements: The IEEE 1394 (FireWire) drivers for the Apple Macintosh Operating System (OS 8.6 with FireWire Update 2.1 or later required) are all ready built into the EPSON printer driver, and require no other driver files.

The driver CD that comes in the box with the EPSON C823722 - IEEE 1394 (FireWire) Type B Interface Card may contain older drivers than what is available on the CD that came with your EPSON Printer or from EPSON Internet Support Web Site. Prior to installing your printer, please refer to the **IEEE 1394 Reference Table** below for the location of the latest drivers for your specific EPSON printer and operating system. If the driver your need is listed as "Update on the Web" the most current driver can be found on the EPSON Internet Support Web Site at: <http://support.epson.com/filelibrary.html>

**IEEE 1394 Reference Table:**

<b>Printer Models:</b>	<b>Windows 2000</b>	<b>Windows Me</b>
EPSON Stylus COLOR 3000	Update on the Web	Update on the Web
EPSON Stylus PRO 5000	Update on the Web	Update on the Web
EPSON Stylus PRO 5500	Driver that came with printer	Driver that came with printer
EPSON Stylus PRO 7000	Update on the Web	Driver on CD-ROM that came with C823722 card
EPSON Stylus PRO 7500	Update on the Web	Driver on CD-ROM that came with C823722 card
EPSON Stylus PRO 9000	Update on the Web	Driver on CD-ROM that came with C823722 card
EPSON Stylus PRO 9500	Update on the Web	Driver on CD-ROM that came with C823722 card
EPSON Stylus PRO 10000	Driver that came with printer	Driver that came with printer
EPSON Stylus PRO 10000CF	Driver that came with printer	Driver that came with printer