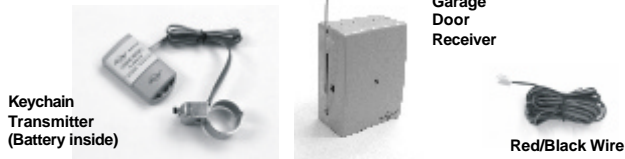


Motorcycle Garage Door Remote Control

Model MT-18

1. INTRODUCTION

In this package, you will find a transmitter with 12V alkaline battery and a mounting bracket, a garage door receiver, a red / black wire.

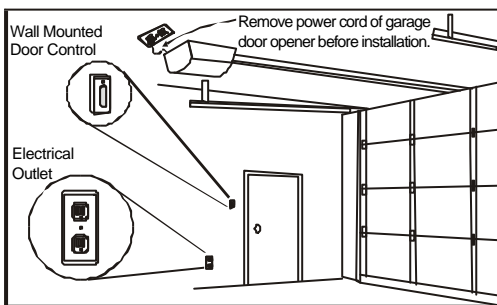


2. INSTALLATION

The following instructions will show you how to install the receiver. After installing, the transmitter (already programmed to the receiver) can be used to operate your garage door opener.

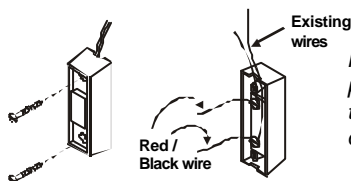
- You need to locate 2 things inside your garage to install the receiver:
- 1) the wall-mounted door control;
 - 2) an electrical outlet, select an electrical outlet different from the one already connected to the power cord of the garage door opener to reduce the chance of interference. The further distance between the receiver and the garage door opener, the less interference between 2 devices.

Note: The length of the red/black wire is 20ft, so the receiver must be plugged into an electrical outlet that is within 20ft of the wall mounted door control. If there is no electrical outlet within 20ft of the wall mounted door control, an extension cord can be used for temporary installation.



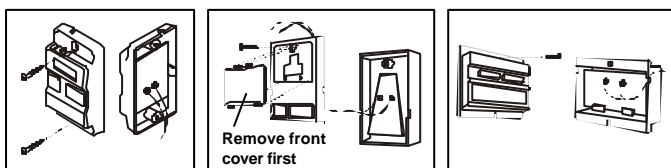
WARNING Unplug the power cord of your garage door opener before installation to ensure power is not connected.

- 1 Remove the wall-mounted door control from the wall by removing the screws. Connect the stripped ends of the Red/Black wire to the 2 terminals (2 screws) on the back of the wall mounted door control. (Polarity does not matter.)



Note: There should be another pair of wires connected to the 2 terminals already. Do not remove/disconnect these existing wires.

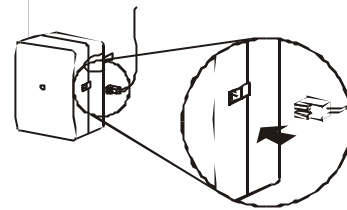
Note: If you see no screws mounting the wall mounted door control, the screws are probably underneath the front cover. Remove the front cover by pressing onto the tabs on top of the cover.



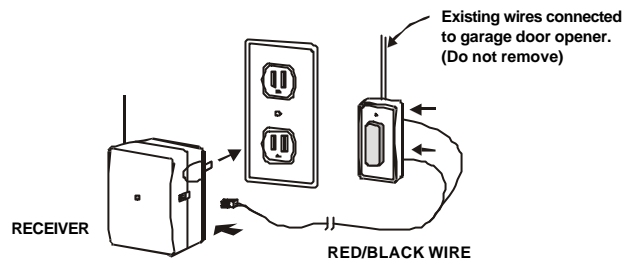
Different wall-mounted door controls

2. INSTALLATION (CONT)

- 2 Plug in the connector end of the Red/Black wire to the MT-18R receiver. Note the orientation of the male & female connector.

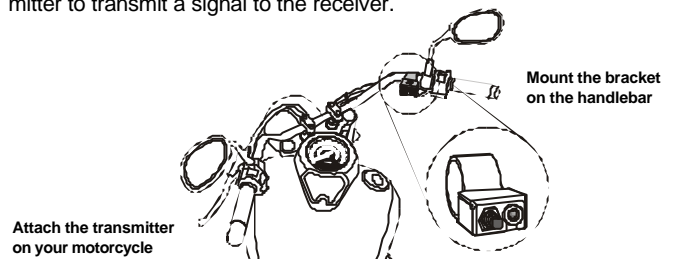


- 3 Plug the receiver into an electrical outlet inside the garage. The red light on the receiver should be on after being plugged into an electrical outlet.



Note: Alternative wiring options are available, the receiver can be connected directly to the opener's motor. Please contact customer service for further information regarding alternative wiring options.

- 4 Re-connect the power cord of the Garage Door Opener.
- 5 The transmitter has been programmed to operate the receiver. Activate the button on the transmitter will trigger the receiver therefore opens the garage door.
- 6 The activation switch and its bracket can be installed on the handlebar of your motorcycle. Remove the screw from the mounting bracket and place the cushion (included) between the mounting bracket and the handlebar. Adjust the tightness of the mounting bracket so it is securely fastened on the handlebar, then fasten the screw on the mounting bracket. You may now attach the transmitter unit to your motorcycle by hook and loop (included). It is recommended to place the transmitter unit at where it will not be exposed to water.
- 7 Activating the switch on the mounting bracket will cause the transmitter to transmit a signal to the receiver.

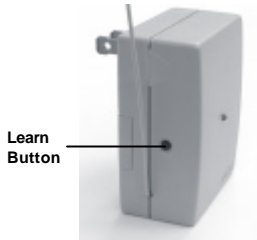


3. TROUBLE SHOOTING

- Q: Door opener does not react after pressing the button on the transmitter ?**
- A:**
- Ensure when the button on the transmitter is pressed, the red light on the bracket comes on. Otherwise, check if the battery is inserted properly.
 - If the red light on the receiver flashes when you press the button on the transmitter, but the door opener does not respond, please ensure the red/black wire is successfully connected from the receiver to the wall mounted door control.
 - Ensure the wires that are previously connected to the wall mounted door control are not loose.
 - Ensure the transmitter has been programmed to the receiver. Refer to section 4 for how to program a transmitter to the receiver.

4. PROGRAM A TRANSMITTER TO THE RECEIVER

The transmitter in this kit has been programmed to the receiver in the factory. You need to do the programming only if you add additional transmitters to the receiver.



- 1 Plug the receiver into an electrical socket.
- 2 Press and hold the learn button on the left hand side of the receiver. The red LED on the receiver will flash.
- 3 Press the button of the transmitter you want to program to the receiver.
- 4 The receiver red LED will go off indicates the programming is completed.

5. REMOVE TRANSMITTER FROM THE RECEIVER

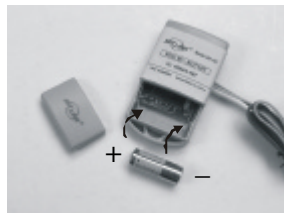
You can delete the transmitter from a receiver.

- 1 Unplug the receiver from the electrical socket.
- 2 Press and hold the learn button on the left hand side of the receiver when plugging the receiver into an electrical socket, the red LED on the receiver will flash rapidly. All the transmitters are deleted.

6. BATTERY

12 volt alkaline battery (size 23A) (included).

It is time to change the battery when the red LED on the transmitter does not turn on when either button is pressed.



7. ADDITIONAL TRANSMITTER

You can add up to 15 transmitters as you want to control the same receiver. Simply program the transmitters to the receiver.



8. CAUTION

RISK OF ELECTRICAL SHOCK. FOR INDOOR USE ONLY.
CAUTION : DISCONNECT POWER BEFORE SERVICING.

Maximum Rating:
Input : 120VAC 60Hz 2W

9. FCC

This device complies with Part 15 of the FCC Rules. Operation is subject to the following two conditions: (1) This device may not cause harmful interference, and (2) This device must accept any interference received, including interference that may cause undesired operation.

WARNING:

Changes or modifications to this unit not expressly approved by the party responsible for compliance could void the user's authority to operate the equipment.

NOTE:

This equipment has been tested and found to comply with the limits for a Class B digital device, pursuant to Part 15 of the FCC Rules. These limits are designed to provide reasonable protection against harmful interference in a residential installation. This equipment generates, uses and can radiate radio frequency energy and, if not installed and used in accordance with the instructions, may cause harmful interference to radio communications.

However, there is no guarantee that interference will not occur in a particular installation. If this equipment does cause harmful interference to radio or television reception, which can be determined by turning the equipment off and on, the user is encouraged to try to correct the interference by one or more of the following measures:

- Reorient or relocate the receiving antenna.
- Increase the separation between the equipment and receiver.
- Connect the equipment into an outlet on a circuit different from that to which the receiver is connected.
- Consult the dealer or an experienced radio/TV technician for help.

10. WARRANTY

If, within one year from date of purchase, this product should become defective (except battery), due to faulty workmanship or materials, it will be repaired or replaced, without charge. Proof of purchase and a Return Authorization are required.

11. CUSTOMER SERVICE

If you would like to order Skylink's products or have difficulty getting them to work, please :

1. visit our FAQ website at www.skylinkhome.com , or
2. email us at support@skylinkhome.com , or
3. call our toll free at 1-800-304-1187 from Monday to Friday, 9 am to 5 pm EST.
Fax (800) 286-1320

CUSTOMER SERVICE

17 Sheard Avenue, Brampton, Ontario, Canada L6Y 1J3
Email: support@skylinkhome.com
<http://www.skylinkhome.com>
P/N. 101A367
US Patent. D380895
©2005 SKYLINK GROUP