

Universal Garage Door Remote Control

Model GBRV

1. INTRODUCTION

Congratulations on your purchase of the Skylink® GBRV Universal Garage Door Remote Control. This is a kit with a universal remote control and Smart Button™. In this kit, you will find the following:

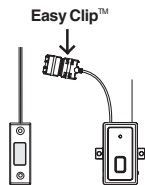


2. RECEIVER INSTALLATION

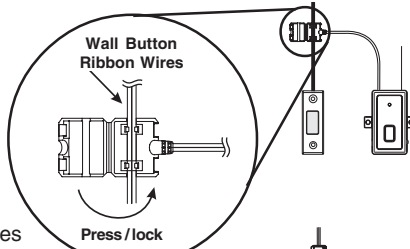


WARNING
Unplug the power cord of your garage door opener before installation to ensure power is not connected.
DO NOT let children use the garage door Transmitter without adult supervisor. Children can injure themselves or others by the garage door.
DO NOT use remote to control the door without safety beams.

1. Open up the "Easy Clip™" and place it underneath the existing 2 wires of the wall button / wall console.
2. Ensure a pair of the wall button ribbon wires are placed properly inside the channels of the "Easy Clip™".



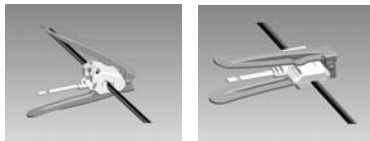
NOTE:
Ensure the ribbon wires are not twisted but laid flat inside the clip.



If your wall button ribbon wires are not the same kind as shown in the diagram, please refer below (4) or visit our website www.skylinkhome.com or contact us for more information.

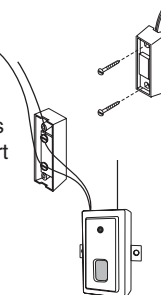


3. Press and lock the clip by snapping it together. The included Crimper helps you lock the "Easy Clip™". Close the cover and press down to lock the cover using this Crimper until you hear a "click".



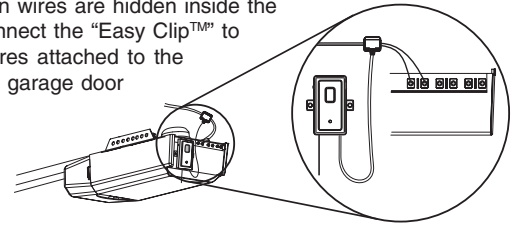
4. If the "Easy Clip™" cannot clip with the wires from your wall button, cut off the "Easy Clip™" then connect two wires from the Smart Button™ GB-318 to the wall button.

- a) Disconnect the existing wall button from the wall.
- b) Connect the 2 wires from the Smart Button™ GB-318 to your existing wall button. Polarity does not matter, so simply pick one wire from the Smart Button™ GB-318 and connect it to one of the screw terminals on your wall button. Connect the 2nd wire to the other screw terminal.
- c) Reconnect the wall button back.



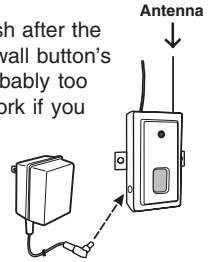
2. RECEIVER INSTALLATION (CONT)

5. If the wall button wires are hidden inside the wall, please connect the "Easy Clip™" to the exposed wires attached to the terminals of the garage door opener.



6. Power up the garage door opener, the red LED on the Smart Button™ GB-318 should keep flashing slowly within 2 minutes.

If the Smart Button™ GB-318's red LED does not flash after the Smart Button™ GB-318 has been connected to the wall button's wires for 2 minutes, your garage door opener is probably too old. However, the Smart Button™ GB-318 will still work if you plug in an adapter (purchased separately). Please contact Skylink® to purchase the adapter.



Rating of the transformer:
12V DC, 100mA ⊖ ⊕
Diameter of DC plug : 3.5mm

7. Secure the Smart Button™ GB-318 properly with the mounting accessories.

Note: Do not cut the antenna! Straighten up the antenna to improve signal reception.

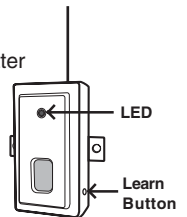
Note: After installation of the "Easy Clip™", if you want to re-install the Smart Button™ GB-318 to another place, please open the "Easy Clip™" by gently unlocking the two buckles with a screw driver, and remove it from the wires. Do not re-use the "Easy Clip™", refer to Step 4 to re-install it.

3. PROGRAM TRANSMITTER G6V TO RECEIVER GB-318

You need to do the programming in order to add the transmitter to a receiver.

Smart Button™ GB-318 can learn up to 10 remote controls. To add remote controls, follow the instructions below:

1. Press the learn button on the side of the Smart Button™ GB-318.
2. Once the learn button is pressed, the LED will flash quickly. Release the learn button.
3. Within 30 seconds, press the button on the transmitter that you want to program to the receiver.
4. Once the remote control is programmed, the LED will flash slowly, in the same way as it flashes in standby mode.
5. You may now operate the garage door opener with this new remote control.

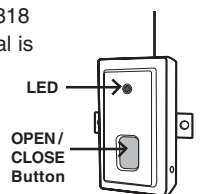


Smart Button™ GB-318

4. OPERATION

If the red LED flashes slowly, the Smart Button™ GB-318 is in standby mode. When a valid remote control signal is received, it will open / close the garage door.

Press the programmed button on the remote control or Smart Button™ GB-318, it will open / close the garage door.



Note: After connecting this NEW Remote Control to your wall button, your existing remote control will still work with this connection.

5. ERASE TRANSMITTERS

To erase unwanted remote control(s) from the memory of Smart Button™ GB-318, first erase all remote controls, then learn the one(s) you would like to keep, follow the steps below:

1. Press and hold the learn button for approximate 10 seconds.
2. The LED will flash rapidly after 10 seconds to indicate all the programmed remote controls have been erased. You may now release the learn button.
3. You have erased all the remote controls programmed to the Smart Button™ GB-318.

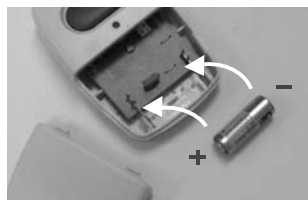
6. TROUBLE SHOOTING

Q: What can I do if the door opener does not react after I press the button on the transmitter ?

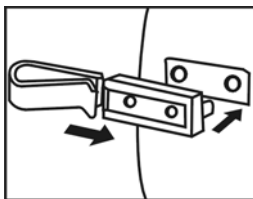
- A: - Ensure when the button on the transmitter is pressed, the red LED on the transmitter comes on. Otherwise, check if the battery is inserted properly.
- Make sure the button on the transmitter is pressed.
 - Ensure the wires that were previously connected to the wall mounted door control are not loose.
 - Ensure the transmitter has been programmed to the receiver. Refer to section 3 for how to program a transmitter to the receiver.

7. BATTERY

12 volt alkaline battery (size 23A) included.



8. VISOR CLIP INSTALLATION



9. ADDITIONAL TRANSMITTER

You can add up to 10 additional transmitters to control the same receiver. Skylink® offers Keychain Transmitters and Keypad Transmitters to work with your receiver. For more information, please visit our website at www.skylinkhome.com or contact us.



10. WARNING

DO NOT let children use the garage door transmitter without adult supervision. Children can injure themselves or others by the garage door.

11. FCC

This device complies with Part 15 of the FCC Rules. Operation is subject to the following two conditions: (1) This device may not cause harmful interference, and (2) This device must accept any interference received, including interference that may cause undesired operation.

WARNING:

Changes or modifications to this unit not expressly approved by the party responsible for compliance could void the user's authority to operate the equipment.

NOTE:

This equipment has been tested and found to comply with the limits for a Class B digital device, pursuant to Part 15 of the FCC Rules. These limits are designed to provide reasonable protection against harmful interference in a residential installation. This equipment generates, uses and can radiate radio frequency energy and, if not installed and used in accordance with the instructions, may cause harmful interference to radio communications.

However, there is no guarantee that interference will not occur in a particular installation. If this equipment does cause harmful interference to radio or television reception, which can be determined by turning the equipment off and on, the user is encouraged to try to correct the interference by one or more of the following measures:

- Reorient or relocate the receiving antenna.
- Increase the separation between the equipment and receiver.
- Connect the equipment into an outlet on a circuit different from that to which the receiver is connected.
- Consult the dealer or an experienced radio/TV technician for help.

12. WARRANTY

If, within one year from date of purchase, this product should become defective (except battery), due to faulty workmanship or materials, it will be repaired or replaced, without charge. Proof of purchase and a Return Authorization are required.

13. CUSTOMER SERVICE

If you would like to

- find out the up-to-date specifications
- know more about features and applications
- download documents, i.e. user's instructions
- order Skylink products

or if you have difficulty getting products to work, please:

1. visit our FAQ section at www.skylinkhome.com, or
2. email us at support@skylinkhome.com, or
3. call our toll free at 1-800-304-1187 from Monday to Friday, 9 am to 5 pm EST. Fax (800) 286-1320

CUSTOMER SERVICE

17 Sheard Avenue, Brampton, Ontario, Canada L6Y 1J3

Email: support@skylinkhome.com

<http://www.skylinkhome.com>

P/N. 101Z768-002

US Patent. D377458

Patents pending

© are registered trademarks of their respective corporations

©2010 SKYLINK GROUP