

STAR WARS™ EPISODE I

ELECTRONIC HANDHELD

PODRACE™ CHALLENGE GAME



INSTRUCTION

1. THE PODRACES OF MOS ESPA

A high speed, adrenaline packed contest, Podracing is an activity of immense popularity for the population of Mos Espa. For some, betting on the Podraces is a favorite pastime, but for its participants the races bring intense competition. Essentially a cockpit pulled by two-high powered engines, each pod is heavily customized to match the demands of each pilot. Quick reflexes and strong nerves are required to race pods, and as such, almost all Podracers are non-human. To the delight of the crowd, many racers routinely crash and burn, but for those that emerge victorious, fame and fortune can be had.

2. BUILDING YOUR PODRACER

You can customize your own Podracer. There is little room for error in a Podrace so you'll want to select the parts that maximize your driving style. Before each race you can choose from 3 different PODS, ENGINES and FEATURES.

PODS

Use the LEFT/RIGHT to choose from the 3 different pod types. Press the ACCELERATE button to select the desired pod. In general, smaller pods handle well but do not take much damage. If your pod gets bumped too many times, it may break and your Podracer will crash (much to the delight of the crowd).

SMALL - this lightweight pod moves fast and steers well but does not take much damage.

MEDIUM - a standard pod type, this gives a good mix of handling and durability.

HEAVY - for the big hitter, this pod takes a lot of damage but can be a little sluggish.

ENGINES

Once your pod type is selected, you can select the engines. Use the LEFT/RIGHT to choose from the 3 different engine types. Press the ACCELERATE button to select the desired type. Different engines will give you a different combination of acceleration and top speed.

TYPE A - a standard engine type, this has balanced acceleration and speed.

TYPE B - slow to get going but it is very fast.

TYPE C - very quick pick-up for good recovery but a little slow at the top end.

FEATURES

Now that your pod and engine types are selected it is time to put that extra surprise on-board. There are no rules on the rocky plains of Tatooine and rest assured the other racers have something special planned for you. Use the LEFT/RIGHT to choose from the 3 feature types. Press the ACCELERATE button to select the desired type.

EXHAUST PORT - open up your exhaust ports and damage the engines of another Podracer. You'll need to be right next to it for this to work.

BOOSTER JETS - a good defensive option, this provides a quick burst of speed in a tight spot.

CLIPPERS - a true crowd pleaser, pull up next to another Podracer cut the engines loose, and watch the fireworks!

Once you've built your Podracer, it's time to race. But first, Watto would like to speak with you!

3. WATTO'S CHALLENGE

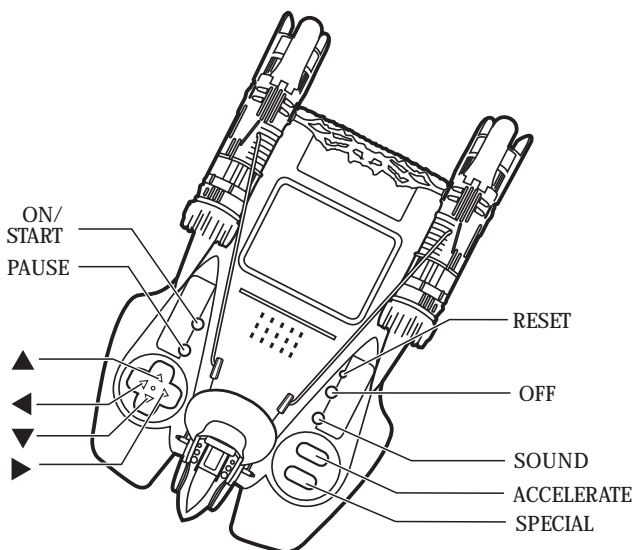
The quest for fame and fortune has brought you this far, now it's time to work on that fortune part. Watto, a Toydarian junk dealer, is well known for his love of gambling on Podraces. He will be more than happy to take your action (and your money). Before each race, you must place a bet with the pudgy little trader.

You begin the game with 300 credits. The object is to win as many credits as possible from Watto and establish your fortune (and also your fame). Before each race, use the UP/DOWN to increase/decrease the amount of the bet. Once you have selected an amount, press the ACCELERATE button. If Watto agrees to your bet, he will nod and the race begins. If Watto does not like your bet, he will shake his head and you will need to haggle some more. Press the SPECIAL button to bet again. Now increase or decrease your bet and press ACCELERATE again. Continue to haggle with him until he agrees on a number. A good rule for betting is to always increase the amount of your bet at least 200 credits. As you continue to win, Watto will ask for increasingly higher bets in hopes of taking back all his losses. However, he will not be foolish enough to bet too much, so be aware that he may decline bets that are too high.

As long as you win the race, you win the bet! You can then race again by pressing the ACCELERATE button. Choose a new Podracer, place your bet, and race again!

If you lose the race, you lose your bet. You may lose a race but still have credits left. However, Watto may not like to bet for the few credits left in your purse, in which case the game is over. If you crash your pod, the game is also over.

4. A PODRACER'S CONTROLS



ON/START - to turn on the unit.
 - to start the game.

PAUSE - to pause the game.

SOUND - to turn the sound off and on.

OFF - to turn off the unit.

RESET - this resets the game in case of malfunction. This will also erase the high score.

▼ - to decelerate.
 - to decrease the wager with Watto.

▲ - to accelerate.
 - to increase the wager with Watto.

◀ - to steer the Podracer left.
 - to select pod, engine, and feature types.

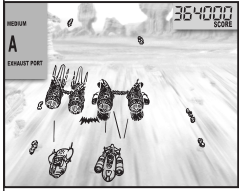
▶ - to steer the Podracer right.
 - to select pod, engine, and feature types.

ACCELERATE - to accelerate the Podracer.
 - to accept and option.
 - to continue to the next race.

SPECIAL - to use a special Podracer feature.
 - to back up and reselect option.
 - to try a new bet when Watto declines your wager.

5. RACING

After you agree on a bet with Watto, you'll need to win the race to collect. Press and hold the ACCELERATE button to move your Podracer forward. Dodge other racers by moving left and right. Release to slow down. Rocks may also appear in the middle of the course so make sure to avoid them when they appear. Also try and avoid hitting the sides of the track. Hitting other racers and the sides of the track will cause damage to your pod. Remember, smaller pods take less damage so too much bumping will crash your Podracer. Bumping will also slow down or stall your Podracer so you'll need to ACCELERATE again to get up to speed.



As you continue to win races, the competition gets tougher and tougher (who knows, maybe Watto even "encouraged" other racers to take a dislike to you). Watch out for their underhanded tactics.



As long as you keep winning, you keep racing. See how many credits you can take from Watto before you meet your destiny. The game will keep your best total!

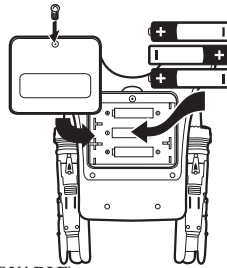
6. INSERTING THE BATTERIES

To insert the batteries, have an adult open the battery compartment cover at the back of the game. (Remove the screw holding the battery door onto the back of the game unit and remove the door.) Insert 3xAAA OR LR03 batteries or equivalent (Batteries not included) as shown.



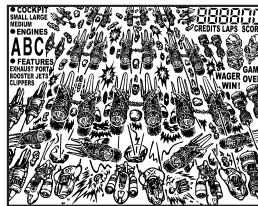
TO ENSURE PROPER FUNCTION :

- DO NOT MIX OLD AND NEW BATTERIES.
- DO NOT MIX ALKALINE, STANDARD OR RECHARGEABLE BATTERIES.
- BATTERY INSTALLATION SHOULD BE DONE BY AN ADULT.
- NON-RECHARGEABLE BATTERIES ARE NOT TO BE RECHARGED.
- RECHARGEABLE BATTERIES ARE TO BE REMOVED FROM THE TOY BEFORE BEING CHARGED (IF REMOVABLE).
- RECHARGEABLE BATTERIES ARE ONLY TO BE CHARGED UNDER ADULT SUPERVISION (IF REMOVABLE).
- ONLY BATTERIES OF THE SAME OR EQUIVALENT TYPE AS RECOMMENDED ARE TO BE USED.
- BATTERIES ARE TO BE INSERTED WITH THE CORRECT POLARITY.
- EXHAUSTED BATTERIES ARE TO BE REMOVED FROM THE TOY.
- THE SUPPLY TERMINALS ARE NOT TO BE SHORT-CIRCUITED.



RESET BUTTON:

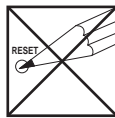
After battery insertion, the RESET switch may be pushed only if the game doesn't work properly. (Use a ball-point pen.) The display should appear as shown in the diagram at the right.



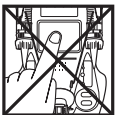
7. CAUTION/DEFECT OR DAMAGE



High temperature will destroy the unit. Do not leave unit in direct sunlight.



Do not use a pencil or pin to press the RESET switch. Use a ball-point pen.



Do not press the liquid crystal display and avoid heavy shock or the display may fail.



Clean only with a piece of soft dry cloth.

Replace battery at the first sign of erratic operation.

If a part of your ELECTRONIC HANDHELD PODRACE CHALLENGE GAME is damaged or something has been left out, DO NOT RETURN THE GAME TO THE STORE. The store doesn't have replacement parts. Instead, write to us at:

Tiger Electronics, Ltd. Repair Center
980 Woodlands Parkway
Vernon Hills, Illinois 60061, U.S.A.

Please include a note with your return explaining the problem along with a sales slip, date, place of purchase and price paid. We will do our best to expedite your return promptly.

8. 90-DAY LIMITED WARRANTY

Tiger Electronics, Ltd. (Tiger) warrants to the original consumer purchaser of this product that the product will be free from defects in materials or workmanship for 90 days from the date of original purchase. This warranty does not cover damages resulting from accident, negligence, improper service or use or other causes not arising out of defects in materials or workmanship.

During this 90-day warranty period, the product will either be repaired or replaced (at Tiger's option) without charge to the purchaser, when returned with proof of the date of purchase to either the dealer or to Tiger.

Product returned to Tiger without proof of the date of purchase or after the 90-day warranty period has expired, but prior to one year from the original date of purchase, will be repaired or replaced (at Tiger's option) for a service fee of U.S.\$6.00. Payments must be by check or money order payable to Tiger Electronics, Ltd.

The foregoing states the purchaser's sole and exclusive remedy for any breach of warranty with respect to the product.

All product returned must be shipped prepaid and insured for loss or damage to:

Tiger Electronics, Ltd. Repair Dept.
980 Woodlands Parkway
Vernon Hills, Illinois 60061, U.S.A.

The product should be carefully packed in the original box or other packing materials sufficient to avoid damage during shipment. Include a complete written description of the defect, a check if product is beyond the 90-day warranty period, and your printed name, address and telephone number.

THIS WARRANTY IS IN LIEU OF ALL OTHER WARRANTIES AND NO OTHER REPRESENTATIONS OR CLAIMS OF ANY NATURE SHALL BE BINDING ON OR OBLIGATE TIGER IN ANY WAY. ANY IMPLIED WARRANTIES APPLICABLE TO THIS PRODUCT, INCLUDING WARRANTIES OF MERCHANTABILITY AND FITNESS FOR A PARTICULAR PURPOSE, ARE LIMITED TO THE NINETY (90) DAY PERIOD DESCRIBED ABOVE. IN NO EVENT WILL TIGER BE LIABLE FOR ANY SPECIAL, INCIDENTAL, OR CONSEQUENTIAL DAMAGES RESULTING FROM POSSESSION, USE, OR MALFUNCTION OF THIS TIGER PRODUCT.

Some states do not allow limitations as to how long an implied warranty lasts and/or exclusions or limitations of incidental or consequential damages, so the above limitations and/or exclusions of liability may not apply to you. This warranty gives you specific rights, and you may also have other rights which vary from state to state.

For more information about Tiger Electronics, our products and special promotions, please visit our Web Site at: www.tigertoys.com

© Lucasfilm Ltd. & TM. All rights reserved.
Used under authorization.

TIGER
ELECTRONICS, LTD.

®, TM, & © 1999 Tiger Electronics, Ltd. All rights reserved.
980 Woodlands Parkway, Vernon Hills, Illinois 60061, U.S.A.

®, TM, & © 1999 Tiger Electronics UK Ltd. All rights reserved.
Belvedere House, Victoria Avenue,
Harrogate, North Yorkshire HG1 1EL, England.
www.tigertoys.com

PRINTED IN CHINA