

TIGER
ELECTRONICS

A division of Hasbro, Inc.
Where Technology Comes to Play!™

©, TM, & © 2001 Tiger Electronics
All rights reserved.
980 Woodlands Parkway,
Vernon Hills, IL 60061, USA

TIGER ELECTRONICS UK LTD.
Belvedere House, Victoria Avenue,
Harrogate, North Yorkshire HG1 1EL, United Kingdom

© Disney/Pixar
Visit the Monsters, Inc. website at www.monstersinc.com



PRINTED IN CHINA
2001044201WTI-01

TIGER
ELECTRONICS

Disney • PIXAR
MONSTERS, INC.

SONG
BOOK &
USER'S
MANUAL



**SCREAM FACTORY
PIANO**



Age 2 & Up
Item No. 59855

MESSAGE TO PARENTS

Thank you for bringing home MONSTERS SCREAM FACTORY PIANO. This is an exciting and educational product for your child.

It's fun to make up and play songs on the MONSTERS SCREAM FACTORY PIANO! Join the scary fun as Mike and Sulley help your child learn numbers! Every time you press a key Mike and Sulley move! Children can also create their own "symphony" of screams and laughs in the SCREAM mode, play along with the songbook in the MUSIC mode or just have fun listening to the 8 built-in melodies. There are fundamental skills combined to form the building blocks for future development.

Please read the instructions carefully and learn about the many different features of MONSTERS SCREAM FACTORY PIANO.

This will allow you to easily explain them to your child in a way that is easy for them to understand.

HOW TO USE THE MONSTER SCREAM FACTORY PIANO

ON- Press this button to turn the unit ON.

OFF- Press this button to turn the unit OFF.

MODE SWITCH- Slide the switch to select between the four modes of learning: MUSIC, SCREAM, NUMBER and MELODIES.

MUSIC- Using the MUSIC mode, press the buttons (1-8) and you will hear a musical note. Experiment with different "notes" to write your own songs! Use the included color-coded songbook to play along.

SCREAM- Press the NOTE buttons (there are 8 of them) to hear different screams and laughs.

NUMBERS- Press each number and hear Mike say the number!

MELODIES- With 8 built-in melodies, you can have music at the touch of key! Sing, dance or just listen to 8 well-known melodies.

1

MODE SWITCH:
SCREAM
MUSIC
NUMBERS
MELODIES

ON/OFF

NUMBERS
BUTTON

2

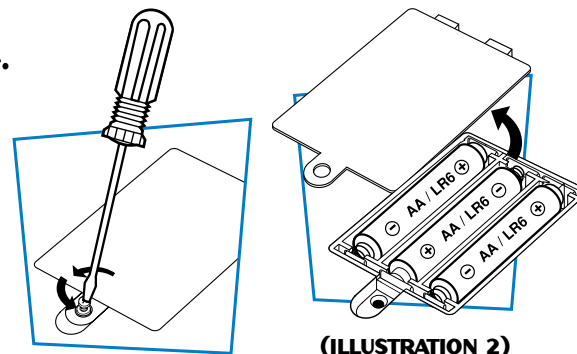


INSERTING THE BATTERIES

Important Note: Battery installation should be done by an adult.

1. MONSTERS SCREAM FACTORY PIANO requires 3 x 1.5V "AA" or LR6" batteries (included).
2. The battery compartment is located on the bottom of the unit.
3. Unscrew and remove the battery compartment door. (ILLUSTRATION 1).
4. Remove discharged batteries if necessary and insert new batteries according to the diagram provided in the battery compartment. (ILLUSTRATION 2).
5. Close the battery compartment door.

Note: These instructions are also stamped onto the bottom of the product for future reference.



(ILLUSTRATION 1)

(ILLUSTRATION 2)

WHEN TO REPLACE BATTERIES

Change the batteries when Mike's voice becomes garbled or seems to be slowing down during play, or when pressing a button does not trigger a response from the unit.

To ensure proper function:

- Do not mix old and new batteries.
- Do not mix alkaline, standard or rechargeable batteries.
- Battery installation should be done by an adult.
- Non-rechargeable batteries are not to be recharged.
- Rechargeable batteries are to be removed from the toy before being charged (if removable).
- Rechargeable batteries are only to be charged under adult supervision (if removable).
- Only batteries of the same or equivalent type as recommended are to be used.
- Batteries are to be inserted with the correct polarity.
- Exhausted batteries are to be removed from the toy.
- The supply terminals are not to be short-circuited.

WARNING: DO NOT DISPOSE OF BATTERIES IN FIRE. BATTERIES MAY EXPLODE OR LEAK.

HOW TO PLAY

MONSTERS SCREAM FACTORY PIANO combines the fun of an unique piano keyboard and creatures from the scary world of MONSTERS, INC., Mike and Sulley will encourage your child to learn numbers and play music. Press any of the eight NUMBER keys and watch as Sulley and Mike move! With numbers, musical notes, melodies and the moving Monsters, the learning and fun can go on for hours!

Choose the mode you wish to play: SCREAM, MUSIC, NUMBER or MELODIES. Then press the ON button to start having fun with the monsters!

- SCREAM MODE

Have fun scaring up your own scream and laugh compositions! Create your own "symphony" of screams and laughs! The SCREAM mode works by pushing each of the colored/numbered keys on the piano, a different scream or laugh will be heard.

- MUSIC MODE

By using the color-coded songbook included, you can play along to well-known melodies. Make up your own songs by pressing the colored keys or experiment with them to play some of your favorite songs!

- NUMBER MODE

You can press a NUMBER button to identify each one and count with the monsters.

- MELODIES MODE

Each key is marked with a familiar melody. Hit the key and sing along with your favorite tune.

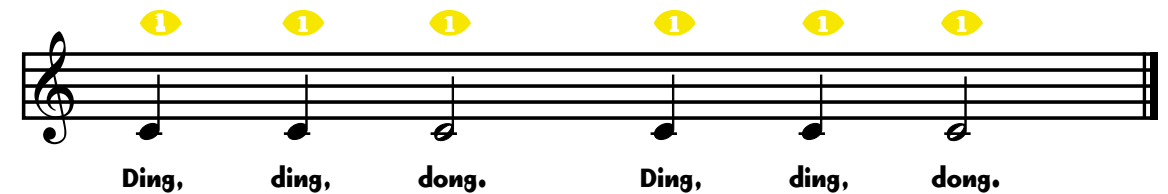
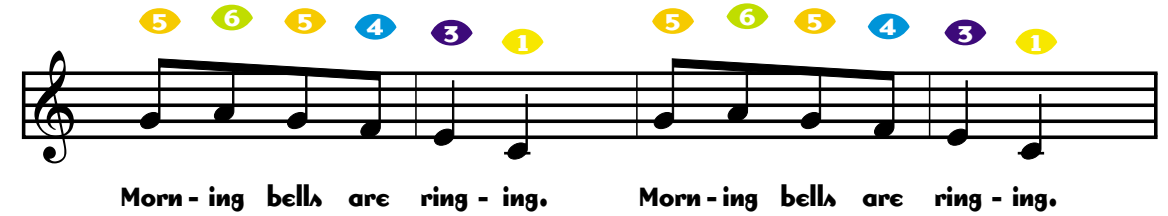
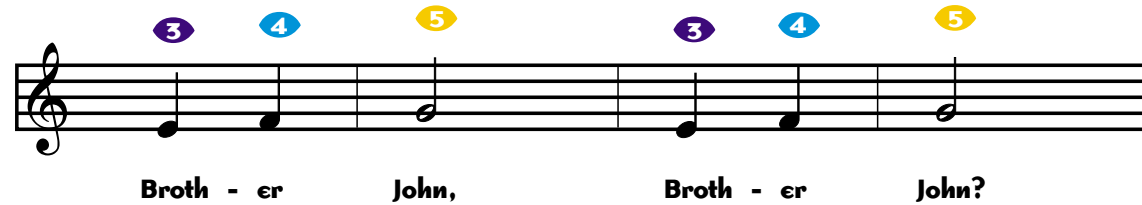
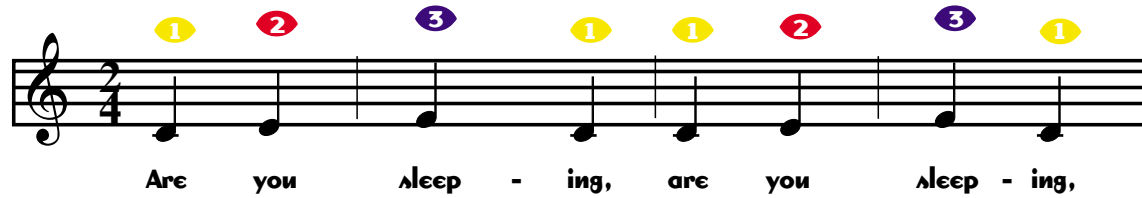
TURNING THE UNIT OFF

MONSTERS SCREAM FACTORY PIANO has an automatic shut-off feature to help prolong battery life. After about a minute, if there is no activity, Mike will say "Bye" and the MONSTERS SCREAM FACTORY PIANO will automatically turn off. Pressing the "ON" button will restart the toy.

If the unit becomes erratic, press the ON/OFF button to reset the unit.




Are You Sleeping?




Mary Had A Little Lamb

3 2 1 2 3 3 3 2 2 2 3 5 5



Mar - y had a lit - tle lamb, lit - tle lamb, lit - tle lamb,
Ev - 'ry where that Mar - y went Mar - y went Mar - y went

3 2 1 2 3 3 3 3 2 2 3 2 1




Mar - y had a lit - tle lamb, it's fleece was white as snow.
Ev - 'ry where that Mar - y went the lamb was sure to go.

Row, Row, Row Your Boat


Moderately

1 1 1 2 3 3 2 3 4 5



Row, row, row your boat gen - tly down the stream.

8 8 8 5 5 5 3 3 3 1 1 1 5 4 3 2 1



Mer - ri - ly, mer - ri - ly, mer - ri - ly, mer - ri - ly, life is but a dream.

Hickory Dickory Dock

3 4 5 4 3 2 3 3

Hick - o - ry, Dick - o - ry, Dock! The

3 5 4 2 3 3 3 5 5

mouse ran up the clock; The clock struck one, and

4 4 6 5 6 5 4 3 2 1

down he ran, Hick - o - ry, Dick - o - ry, Dock!

London Bridge

Happily 5 6 5 4 3 4 5 2 3 4 3 4 5

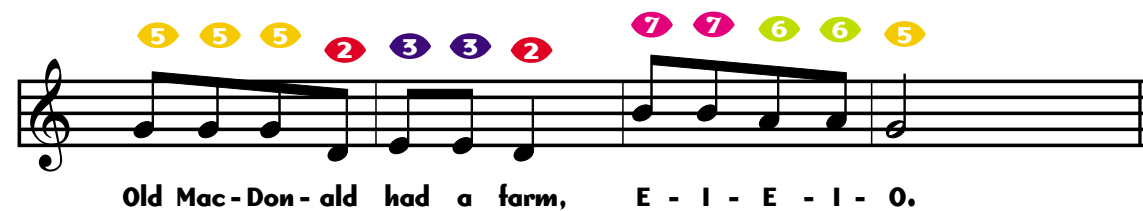
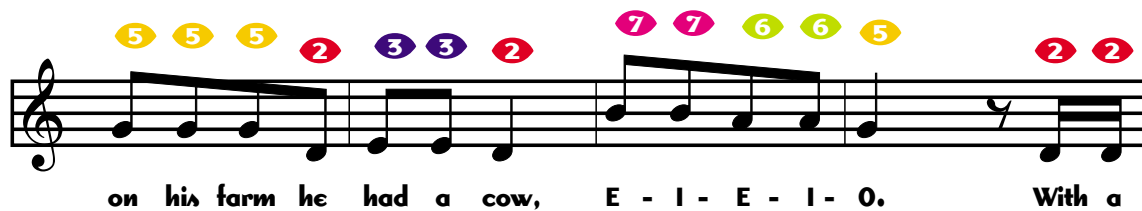
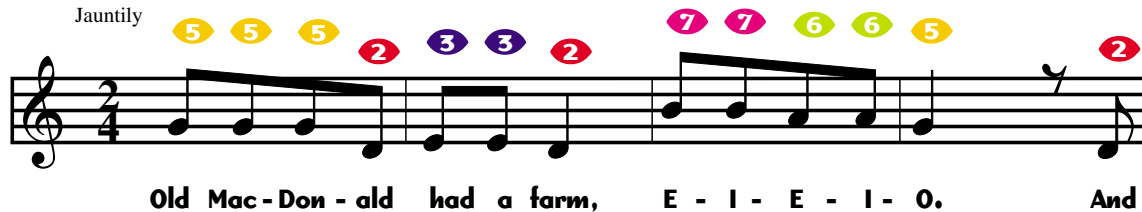
1. Lon - don Bridge is fall - ing down, fall - ing down, fall - ing down.

5 6 5 4 3 4 5 2 5 3 1

Lon - don Bridge is fall - ing down, my fair la - dy.

Old MacDonald Had A Farm

Jauntily



A Ticket, A Tasket

TRADITIONAL

Moderately

4 5 3 6 5 3 4 5 5 3 6 5 3 4

A tis - ket, a tas - ket, a green and yel - low bas - ket; I

2 2 4 4 2 2 4 4 5 4 3 2 3 1 6

wrote a let - ter to my love and on the way I dropped it. I

5 3 6 5 3 3 5 5 3 6 5 3 3

dropped it, I dropped it, and on the way I dropped it; A

4 4 2 2 4 4 2 2 5 4 3 2 3 1

lit - tle girl - ie picked it up and put it in her pock - et.

Pop Goes the Weasel

1 1 2 2 3 5 3 1 1

All a - round the cob - bler's bench The

1 1 2 2 3 1 1 1 1 2 2

mon - key chased the wea - sel. The mon - key thought was

3 5 3 1 6 2 4 3 1

all in fun. Pop! Goes The Wea - sel.

TAKING CARE OF MONSTERS SCREAM FACTORY PIANO

To protect your MONSTERS SCREAM FACTORY PIANO, follow these instructions:

- Prevent spills of food and beverage on the unit.
- Do not submerge the product in water.
If the product needs to be cleaned, wipe gently with a barely damp, soft cloth.
- Do not throw or kick the product, and do not push sharp objects through the speaker opening.



90 - DAY LIMITED WARRANTY

Tiger Electronics (Tiger) warrants to the original consumer purchaser of this product that the product will be free from defects in materials or workmanship for 90 days from the date of original purchase. This warranty does not cover damages resulting from accident, negligence, improper service or use or other causes not arising out of defects in materials or workmanship.

During this 90-day warranty period, the product will either be repaired or replaced (at Tiger's option) without charge to the purchaser, when returned with proof of the date of purchase to either the dealer or to Tiger. Product returned to Tiger without proof of the date of purchase or after the 90-day warranty period has expired, but prior to one year from the original date of purchase, will be repaired or replaced (at Tiger's option) for a service fee of U.S.\$15.00. Payments must be by check or money order payable to Tiger Electronics.

The foregoing states the purchaser's sole and exclusive remedy for any breach of warranty with respect to the product.

All product returned must be shipped prepaid and insured for loss or damage to:

Tiger Repair Department
1000 N. Butterfield Road, Unit 1023
Vernon Hills, IL 60061, U.S.A.

The product should be carefully packed in the original box or other packing materials sufficient to avoid damage during shipment. Include a complete written description of the defect, a check if product is beyond the 90-day warranty period, and your printed name, address and telephone number.

THIS WARRANTY IS IN LIEU OF ALL OTHER WARRANTIES AND NO OTHER REPRESENTATIONS OR CLAIMS OF ANY NATURE SHALL BE BINDING ON OR OBLIGATE TIGER IN ANY WAY. ANY IMPLIED WARRANTIES APPLICABLE TO THIS PRODUCT, INCLUDING WARRANTIES OF MERCHANTABILITY AND FITNESS FOR A PARTICULAR PURPOSE, ARE LIMITED TO THE NINETY (90) DAY PERIOD DESCRIBED ABOVE. IN NO EVENT WILL TIGER BE LIABLE FOR ANY SPECIAL, INCIDENTAL, OR CONSEQUENTIAL DAMAGES RESULTING FROM POSSESSION, USE, OR MALFUNCTION OF THIS TIGER PRODUCT.

Some states do not allow limitations as to how long an implied warranty lasts and/or exclusions or limitations of incidental or consequential damages, so the above limitations and/or exclusions of liability may not apply to you. This warranty gives you specific rights, and you may also have other rights which vary from state to state.



FCC STATEMENT

This device complies with Part 15 of the FCC Rules. Operation is subject to the following two conditions:

- (1) This device may not cause harmful interference, and
- (2) This device must accept any interference received, including interference that may cause undesired operation.

Warning: Changes or modifications to this unit not expressly approved by the party responsible for compliance could void the user's authority to operate the equipment.

NOTE: This equipment has been tested and found to comply with the limits for a Class B digital device, pursuant to Part 15 of the FCC Rules. These limits are designed to provide reasonable protection against harmful interference in a residential installation. This equipment generates, uses and can radiate radio frequency energy and, if not installed and used in accordance with the instructions, may cause harmful interference to radio communications.

However, there is no guarantee that interference will not occur in a particular installation. If this equipment does cause harmful interference to radio or television reception, which can be determined by turning the equipment off and on, the user is encouraged to try to correct the interference by one or more of the following measures:

- Reorient or relocate the receiving antenna.
- Increase the separation between the equipment and receiver.
- Connect the equipment into an outlet on a circuit different from that to which the receiver is needed.
- Consult the dealer or an experienced radio/TV technician for help.

For more information about Tiger Electronics, our products and special promotions, please visit our web site at: www.tigertoy.com

Please retain instructions for future reference.