



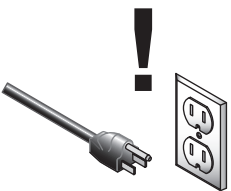
MODEL G2909 2 HP ELECTRIC MOTOR INSTRUCTION SHEET

Model G2909 Specifications


Power 2 HP
 Cycle.....60Hz
 Voltage110/220V
 Prewired220V
 Amps26/13A
 RPM..... 3450
 Phase Single
 Class..... E
 Start Capacitor 400MFD 125VAC
 Dimensions..... 1 7/8"D x 3 1/2"L

Electrical Safety

If you are unsure how to attach wires to terminals, DO NOT continue. Contact a qualified electrician for assistance. Connecting wires improperly may cause them to come loose or contact other wires, which can cause electrocution, fire, or a short.

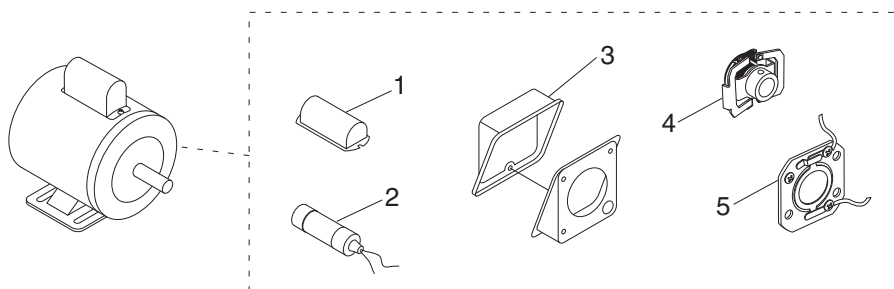


! WARNING
 Disconnect power when replacing motor. Failure to do this may result in serious personal injury.



! WARNING
 Electrocution or fire could result if this motor is not grounded correctly or if your wire connections do not comply with local and state codes. Ensure compliance by checking with a qualified electrician!

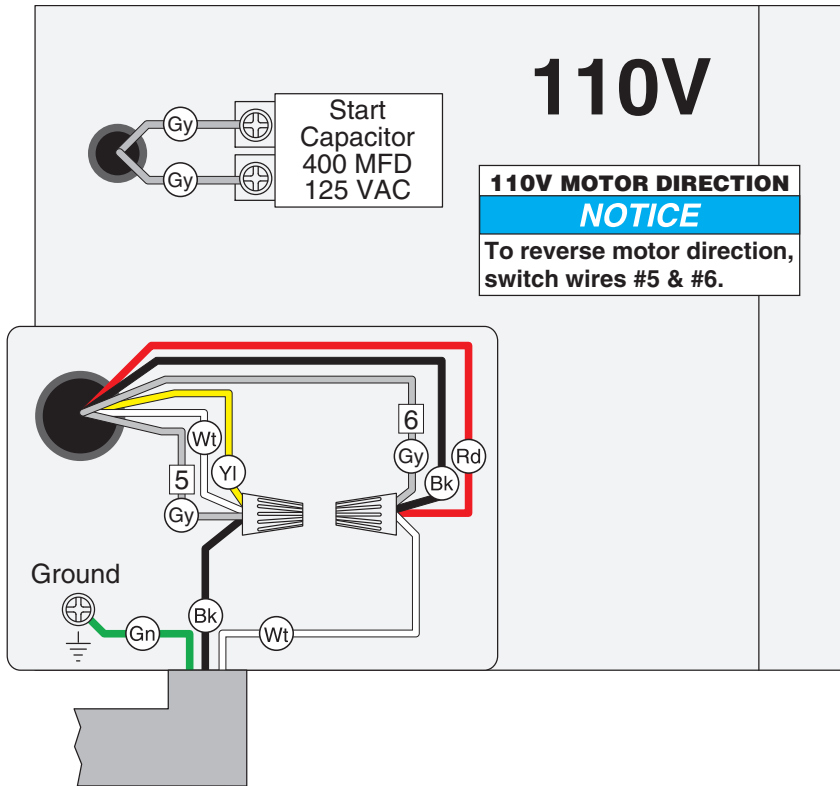
Replaceable Parts



REF	PART #	DESCRIPTION
1	P2909001	S CAPACITOR COVER
2	PC400H	S CAPACITOR 400M 125V 1-7/8 X 3-1/2
3	P2909003	JUNCTION BOX

REF	PART #	DESCRIPTION
4	P2909004	CENTRIFUGAL SWITCH
5	P2909005	CONTACT PLATE

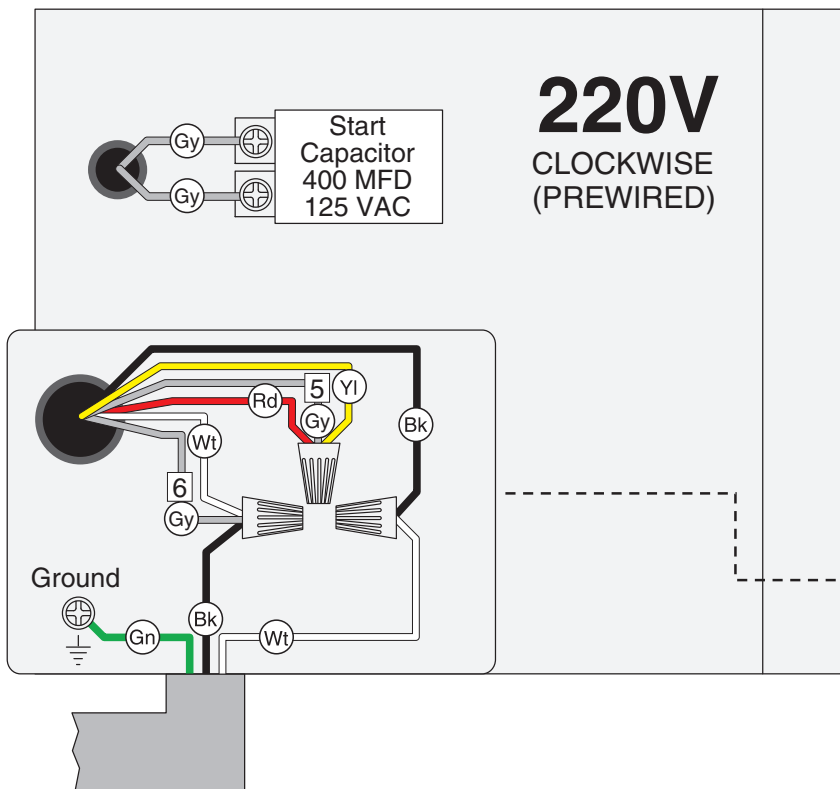
G2909 Wiring Diagram



View this page in color at www.grizzly.com.

COLOR KEY	
BLACK	Bk
WHITE	Wt
GREEN	Gn
GRAY	Gy
RED	Rd
YELLOW	Yl

WARNING!
SHOCK HAZARD!
Disconnect power
before working on
wiring.



NOTICE

The motor wiring shown here is current at the time of printing, but it may not match your machine. Always use the wiring diagram inside the motor junction box.

