

TOSHIBA

OWNER'S MANUAL

Integrated Digital LCD TV



HDMI

32WLT66A
37WLT66A
42WLT66A
47WLT66A

Owner's Record

You will find the model number and serial number on the back of the TV. Record these numbers in the spaces provided below. Refer to them whenever you call upon your TOSHIBA dealer regarding this product.

Model number:

Serial number:

DVB registration identification reference number: 4165 (32WLT66A), 4073 (37WLT66A), 4074 (42WLT66A), 4075 (47WLT66A).

Trade Mark of the DVB Digital Video Broadcasting Project (1991 to 1996).

© 2006 TOSHIBA CORPORATION
All Rights Reserved

VX1A000109A0

Contents

Introduction

Welcome to Toshiba	3
Important Safety Instructions	3
Installation	3
Use	4
Service	5
Cleaning	6
Important information	6

Getting started

Connecting an antenna	7
Exploring your new TV	7
Installing the remote control batteries	7
TV top and front panel controls	8
TV side and back panel connections	9
Learning about the remote control	10
Location of controls	10
Learning about the menu system	11
Displaying the DIGITAL SETTING chart	11
Displaying the TV SETUP menu chart	11
Turning the TV on	12
Switching on the TV	12
Switching off the TV	12
Tuning the TV for the first time	
- digital only	13
Programming channels into the TV's channel memory	13
Auto scan - digital only	13
Manual scan - digital only	14
Programming channels automatically	
- analog only	14
Manually setting channels in the channel memory - analog only	15
Watching TV programs	16
Viewing Digital programs - digital only	16
Selecting channel from Navigation List	
- digital only	16
Changing the program position - analog only	16
Switching between two program positions	16
Selecting the menu language - analog only	16
Displaying the on-screen information	
- analog only	16
On-screen information - digital only	16
Setting the I-Plate - digital only	17
Sorting program position - analog only	17

Using the TV's features (General)

Picture adjustment	18
Selecting the picture size	18
Using the picture still	19
Adjusting the picture position - analog only	19
Resetting the picture position - analog only	19
Selecting the picture mode	19
Adjusting the basic picture quality	19
Activating the black stretch	20
Activating the MPEG NR (Noise Reduction)	20
Activating the DNR (Digital Noise Reduction)	
- analog only	20
Selecting the color temperature	20
Adjusting the color management	20
Resetting the base color adjustment	20
Using the cinema mode - analog only	21
Using the auto format	21
Activating the ANT ATT (Antenna Attenuation)	21
Sound adjustment	22
Setting the MTS (Multi-channel TV Sound)	
- analog only	22
Selecting the dual 1 or dual 2 mode	
- analog only	22
Selecting the stereo programs - analog only	22
Selecting the bilingual programs - analog only	22
Adjusting the sound quality	22
Using the SRS WOW surround sound	23
Using the stable sound	23
Using the bass boost	23
Activating blue screen	23
Adjusting the brightness of side panel	23

The timers	24
Setting the Time zone - digital only	24
Program Timer - digital only	24
Selecting the timer menu - analog only	25
Selecting the video input source to view	25
Setting the manual setting menu - analog only	25
Teletext in Analog TV	26
Setting up the teletext mode	26
Teletext general information	26
Using Auto mode	27
Using LIST mode	27
Teletext buttons on the remote control	28
Teletext in Digital TV	28

Other Digital TV features and settings

Setting the EPG (Electronic Program guide)	29
Password	29
Setting the password	29
Parental rate	30
Setting the parental rate	30
Channel list	30
Setting favorite, locking and deleting channels	30
Editing channel names	30
Favorite Channel List	31
Favorite Mode	31
Subtitle	31
Information, restore factory setting	31
Information	31
Restore factory setting	31
Digital Output, Audio Track	32
Digital Output	32
Audio Track	32
Transparency	32
TV Setup	32

Connecting your TV

Back connections	33
Connection example	33
Connecting an audio system - digital only	33
Connecting an amplifier equipped with a Dolby Digital decoder	34
Connecting an amplifier equipped with an MPEG decoder	34
Connecting an amplifier equipped with a digital audio (optical) input	34
Side connections	35
Connection example	35
Connecting an HDMI or a DVI device	35
Connecting an HDMI or a DVI device	35
Connecting an HDMI device	36
Connecting a DVI device	36
Selecting the PC/HDMI1 audio mode	36
Setting the HDMI1 audio mode	36
Connecting a computer	37
Using the PC setting	38
Adjusting the picture size/position	38
Adjusting the clock phase of the picture	38
Adjusting the sampling clock	38
Resetting the PC setting	38

Reference section

Troubleshooting	39
Symptom and solution	39
Symptom and solution - digital only	39
APPENDIX	40
AUSTRALIAN PARENTAL GUIDANCE CODES (Normative)	40
Broadcast system	41
Broadcast transmission systems of each country or region	41
Specifications	41
Integrated Digital LCD TV	41

Introduction

Welcome to Toshiba

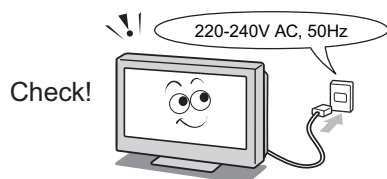
- Thank you for purchasing this Toshiba LCD Color Television. This manual will help you use the exciting features of your new TV.
- Instructions in this manual are based on using the remote control.
- Please read all safety and operating instructions in this manual carefully, and keep this manual for future reference.

Important Safety Instructions

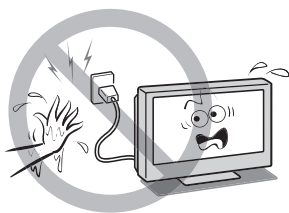
Be sure to observe the following instructions and precautions to ensure safe use of this TV.

Installation

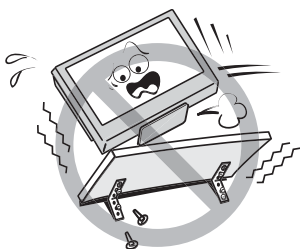
- 1) **Always connect the power plug to an appropriate electrical outlet equipped with 220-240V, AC 50Hz.**
Never use the TV outside the specified voltage range. It may cause a fire or an electric shock.



- 2) **Never insert or remove the power plug with wet hands.**
This may cause an electric shock.

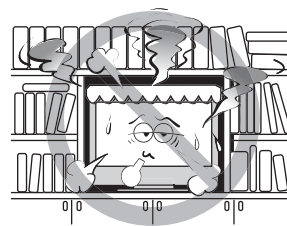


- 3) **Never place the TV in an unstabilized location such as on a shaky table, incline or location subject to vibration.**
The TV may drop or fall off which may cause injury or damage.



- 4) **Never block or cover the slots and openings in the cabinet.**
 - Never place the TV so that it is facing upward or on its side.
 - Never place the TV in a closet, bookcase or other similar area where the ventilation is poor.
 - Never drape a newspaper, tablecloth or curtain on the TV.
 - When installing the TV against a wall, always keep the TV at least 10 cm away from the wall.
 - Never place the TV on a soft unstable surface, such as a carpet, or a cushion.

The inside of this TV will overheat if the ventilation holes are covered, blocked or sealed, which may result in a fire.

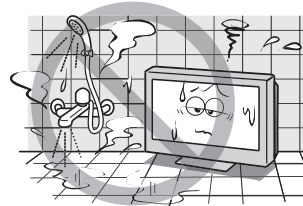


- 5) **Never place the TV near a heater or in direct sunlight.**

The surface of the cabinet or power cord may melt and result in a fire or an electric shock.



- 6) **Never place the TV in an area exposed to high humidity levels, such as in a bathroom or close to a humidifier.**
This may cause a fire or an electric shock.

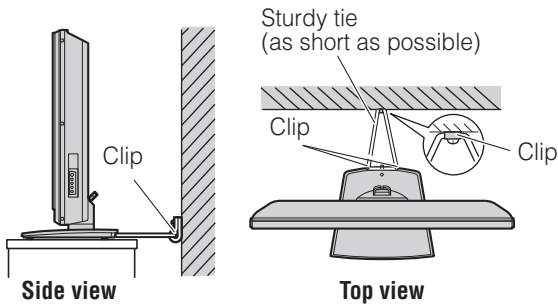


- 7) **Never place the TV next to a stove where it will be exposed to oil, smoke, or steam, or in a location where there is a large quantity of dust.**
This may cause a fire or an electric shock.



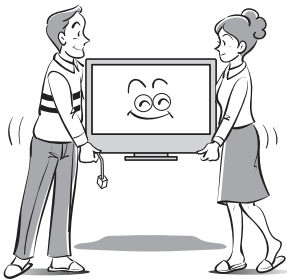
8) Install the TV in a horizontal, stable location. Connect between two clips on the back of the TV and a wall, pillar, etc., with a sturdy tie and clip of supplied accessories (see page 42).

- Use as short a tie as possible to ensure the TV is stable.
- If the TV is not installed securely, it may lean or fall over and cause an injury.
- To prevent injury, use the exclusive optional stand or wall-hanging bracket to install this TV on the floor or wall securely in accordance with a qualified technician.



9) Precautions for moving the TV

- When moving the TV, be sure to remove the plug from the wall outlet and disconnect the antenna cable and audio/video cables, any steady ties. Fire or electric shock may result if the power cord is damaged.
- When carrying the TV, at least two people are needed. Be sure to carry it upright.
- Never carry the TV with the screen facing up or down.



10) Precautions for installing on outdoor antenna

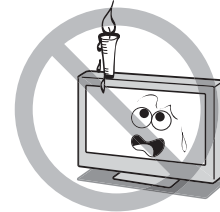
An outside antenna system should not be located in the vicinity of overhead power lines, or other electric light or power circuits. If the antenna falls down or drops, it may cause injury or electric shock.



Use

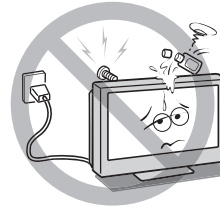
1) Never place hot objects or open flame sources, such as lighted candles or nightlights, on or close to the TV.

High temperatures can melt plastic and lead to fires.



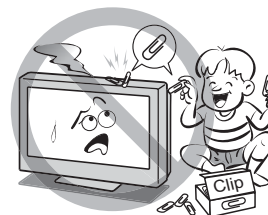
2) The apparatus shall not be exposed to dripping or splashing and that no objects filled with liquids, such as vases, shall be placed on the apparatus.

When liquids are spilled or small items are dropped inside the TV, this may cause a fire or an electric shock. If small objects drop inside the TV, turn off the TV and remove the power plug from the outlet immediately and contact a service technician.



3) Never insert objects (metal or paper) or pour water inside the TV through ventilation holes and other openings.

These items may cause a fire or an electric shock. If these objects are inserted inside the TV, turn off the TV and remove the power plug from the outlet immediately and contact a service technician. Be especially careful that children do not insert objects in the TV.



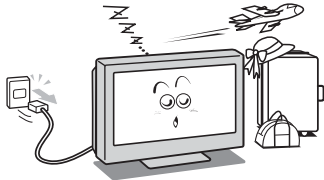
4) Never stand or climb on the TV.

Be especially careful in households with children to prevent them through climbing on top of the TV. It may move, fall over, break, become damaged or cause an injury.



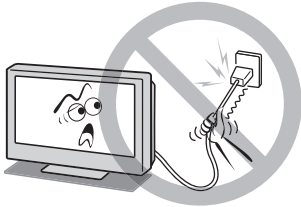
5) **When the TV will not be used for a long period of time, such as during vacation or travel, remove the power plug from the wall outlet for safety.**

- The TV is not completely disconnected from the power supply line, as minute current is consumed even when the O/I Power switch is turned off.
- The Mains plug or an appliance coupler is used as the disconnect device, therefore the disconnect device shall remain readily operable.



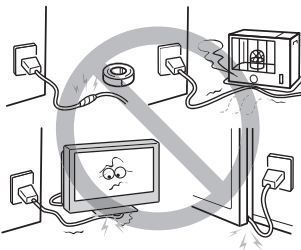
6) **Never pull on the power cord when removing the plug from the wall outlet.**

Always hold the plug firmly when removing it. If the power cord is yanked, the cord may become damaged and a fire or an electric shock may occur.



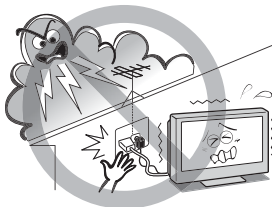
7) **Never cut, break, modify, twist, bunch up or bent the cord or apply excessive force or tension to it.**

Never place heavy objects on the cord or allow it to overheat as this may cause damage, a fire or an electric shock. Contact a service technician if the power cord is damaged.



8) **If there is thunder or lightning, never touch the antenna cable or other connected cables.**

You may suffer an electric shock.



Service

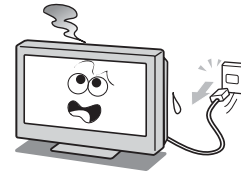
1) **Never repair, modify or disassemble the TV by yourself.**

It may cause a fire or an electric shock. Consult a service technician for inspection and repairs.



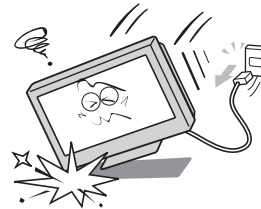
2) **When a malfunction occurs, or if smoke or an unusual odor comes from the TV, turn off the TV and remove the power plug from the outlet immediately.**

Make sure that the smoke or smell has stopped, then contact a service technician. If the TV is still used in this condition, it may cause a fire or an electric shock.



3) **If the TV is dropped or the cabinet is broken, turn off the TV and remove the power plug from the outlet immediately.**

If the TV is still power used in this condition, it may cause a fire or an electric shock. If the cabinet is broken, be careful when handling the TV to prevent an injury. Contact a service technician for inspection and repair.

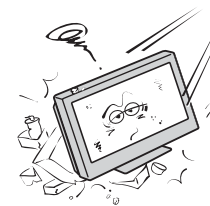


4) **When the TV reaches the end of its useful life, ask a qualified service technician to properly dispose of the TV.**

Note:

The lamp unit contains a small amount of mercury. Disposal of mercury may be regulated due to environmental considerations.

Dispose of the used lamp unit by the approved method for your area. For disposal or recycling information, please contact your local authorities.



Cleaning

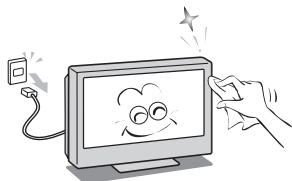
1) Remove the power plug before cleaning.

Never use solvents such as benzine or thinner to clean the TV.

- These solvents may distort the cabinet or damage its finish.
- If rubber or vinyl products remain in contact with the TV for a long time, a stain may result.

If the cabinet becomes dirty, clean it with a soft, dry cloth.

When cleaning the surface of the LCD display, wipe the panel surface gently with a soft, dry cloth.



2) Periodically disconnect the power plug from the outlet and check it.

If dust has collected on the power plug connectors, clean off the dust with dry cloth.

This dust may cause a fire due to reduced insulation on the plug.



Important information

1) About LCD screen

- If you have the LCD screen facing to the sun, the LCD screen will be damaged. Be aware of locating the TV in the place such as window side or outside of the room.
- Never press the LCD screen strongly or scratch it, and never put anything on it. These actions will damage the LCD screen.

2) About cabinet

Never spray volatile compounds such as insecticide on the cabinet.

This may cause a discoloration or damage the cabinet.

3) Some pixels of the screen do not light up

The LCD display panel is manufactured using an extremely high level of precision technology, however sometimes some pixels of the screen may be missing picture elements or have luminous spots. This is not a sign of a malfunction.

4) About Interference

The LCD display may cause interference in image, sound, etc. of other electronic equipment that receives electromagnetic waves (e.g. AM radios and video equipment).

5) About using under the low temperature places

If you use the TV in the room of 0°C or less, the picture brightness may vary until the LCD monitor warms up. This is not a sign of a malfunction.

6) About afterimage

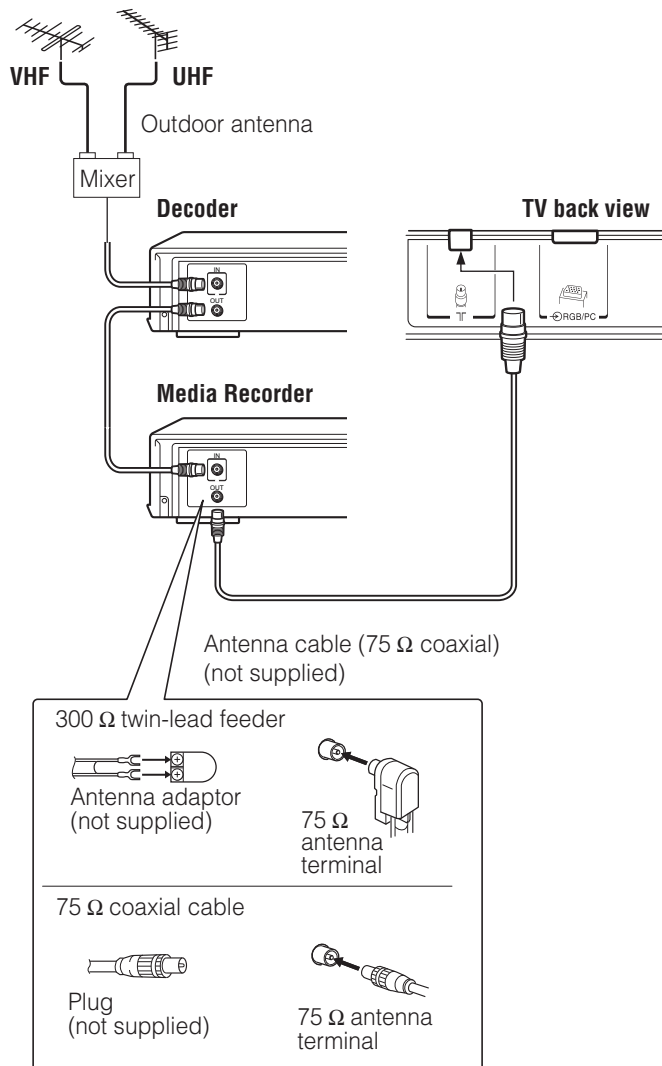
If a still picture is displayed, an afterimage may remain on the screen, however it will disappear. This is not a sign of malfunction.

Exemptions

- Toshiba is not liable for any damage caused by fires, natural disaster (such as thunder, earthquake, etc.), acts by third parties, accidents, owner's misuse, or uses in other improper conditions.
- Toshiba is not liable for incidental damages (such as profit loss or interruption in business, modification or erasure of record data, etc.) caused by use or inability to use of product.
- Toshiba is not liable for any damage caused by neglect of the instructions described in the owner's manual.
- Toshiba is not liable for any damage caused by misuse or malfunction through simultaneous use of this product and the connected equipment.

Connecting an antenna

Optimum reception of color requires a good signal and will generally mean that an outdoor antenna must be used. The exact type and positioning of the antenna will depend upon your particular area. Your Toshiba dealer or service personnel can best advise you on which antenna to use in your area. Before connecting the antenna cable, turn off all main power switches.

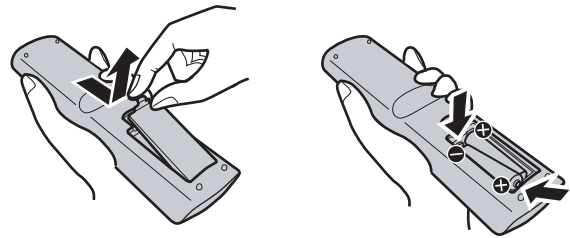


Exploring your new TV

Installing the remote control batteries

Remove the battery cover.

Insert two R03 (AAA) batteries matching the $-/+$ polarities of the battery to the $-/+$ marks inside the battery compartment.



Cautions:

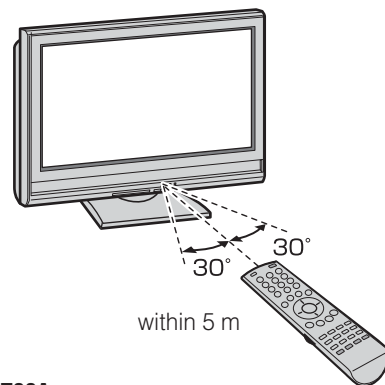
- Dispose of batteries in a designated disposal area. Never throw batteries into a fire.
- Attention should be drawn to the environmental aspects of battery disposal.
- Never mix battery types or combine used batteries with new ones.

Notes:

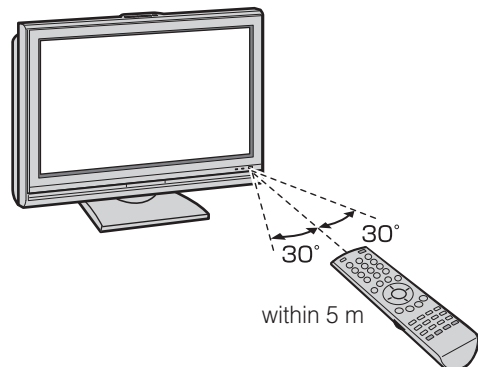
- If the remote control does not operate correctly, or if the operating range becomes reduced, replace both batteries with new ones.
- If the batteries are dead or if you will not use the remote control for a long time, remove the batteries to prevent battery acid from leaking into the battery compartment.

Effective range

for 32WLT66A/37WLT66A/42WLT66A



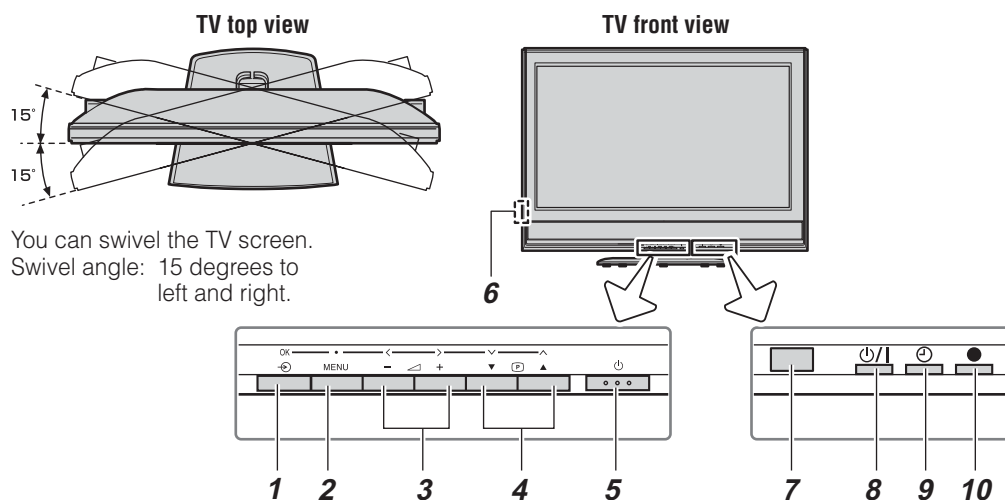
for 47WLT66A



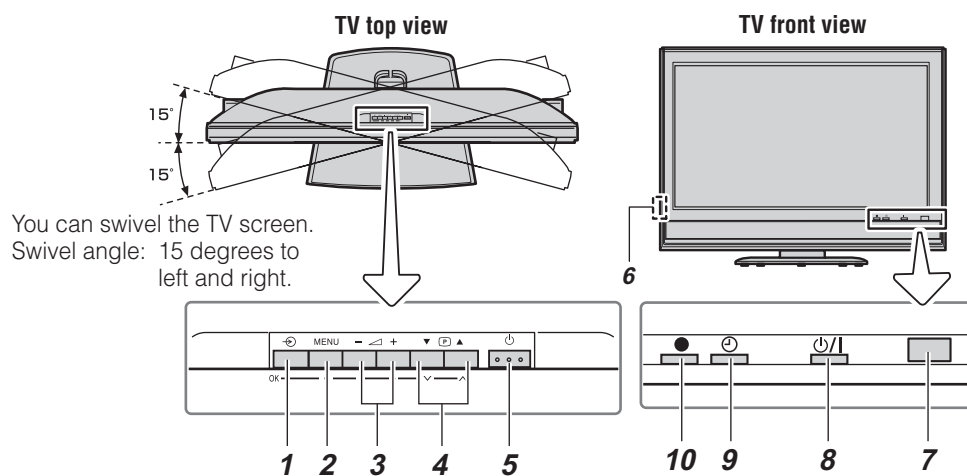
TV top and front panel controls

- You can operate your TV using the buttons on the top or front panel, or the remote control. The back and side of the panel provide the terminal connections to connect other equipment to your TV (☞ “Connecting your TV” pages 33 - 38).
- For the use of each control, see the pages in brackets.

for 32WLT66A/37WLT66A/42WLT66A



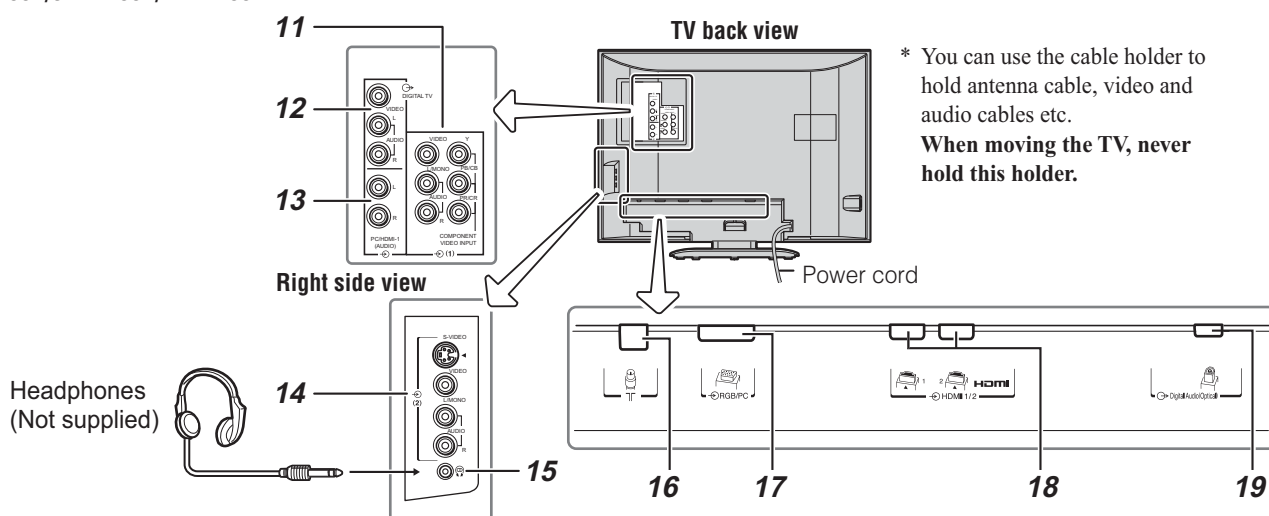
for 47WLT66A



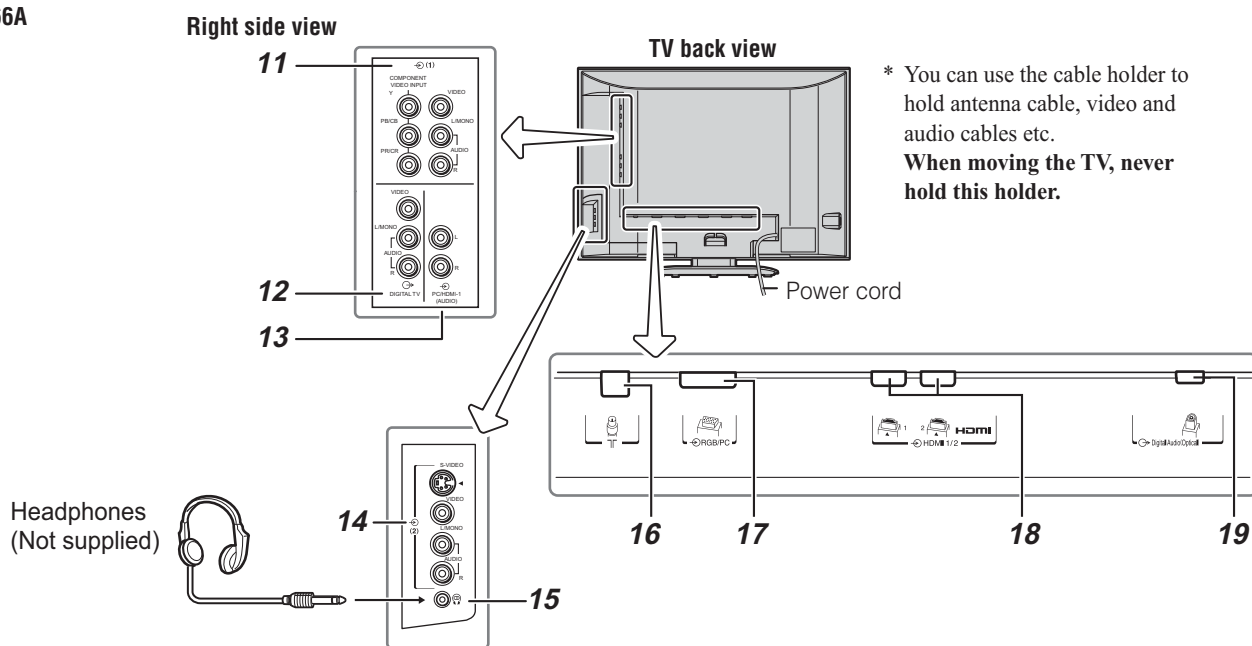
- 1** (**Input source selection**) — When no menu is on-screen, this button selects the input source (☞ page 25).
OK — When a Analog TV menu is on-screen, this button functions as the next menu navigation button (☞ page 11, 25).
- 2** **MENU** — Press to access the TV SETUP menu (☞ page 11).
- 3** (**Volume**) — When no menu is on-screen, these buttons adjust the volume level (☞ page 10).
<> (**MENU left/right**) — When a Analog TV menu is on-screen, these buttons function as left/right menu navigation buttons or adjust settings (☞ page 11).
- 4** (**Program position**) — When no menu is on-screen, these buttons select the program position. (☞ page 15).
 (**MENU up/down**) — When a Analog TV menu is on-screen, these buttons function as up/down menu navigation buttons (☞ page 11).
- 5** (**Power on/Standby**) — Press to turn the TV on/standby (☞ page 12).
- 6** (**Power switch**) — Press to turn the TV on and off (☞ page 12).
- 7** (**Remote sensor**) — Point the remote control toward this remote sensor (☞ page 12).
- 8** (**Power LED**) — Power indicator (☞ page 12).
- 9** (**On timer LED**) — Timer indicator (☞ page 25).
- 10** (**DTV timer LED**) — Digital TV timer Recording Indicator (☞ page 24).

TV side and back panel connections

for 32WLT66A/37WLT66A/42WLT66A



for 47WLT66A



- 11** **(1) (Video 1 input terminals)** — High-definition component video or standard (composite) video and standard (analog) stereo audio inputs (page 33).
- 12** **DIGITAL TV (output terminals)** — For use when connecting a VCR/HDD/DVD video recorder with standard video and standard audio inputs (page 33). No On-Screen-Display will output from this terminals.
- 13** **PC/HDMI1 (AUDIO) (input terminals)** — For use when connecting a personal computer (PC) or a DVI device with standard audio output (page 33, 36).
- 14** **(2) (Video 2 input terminals)** — Optional S-video or standard video and standard audio inputs (page 35).
- 15** **(Headphone jack)** — For use with headphones.

Note:

When the Headphone jack is being used, the sound from all speakers will be muted, and normal sound will be output to the headphones only.

- 16** **(Antenna input terminal)** — Analog antenna signal input (page 7).
- 17** **RGB/PC (input terminal)** — For use when connecting a personal computer (PC) (page 37).
- 18** **HDMI1 and HDMI2 (input terminals)** — High-Definition Multimedia Interface input receives digital audio and uncompressed digital video from an HDMI device or uncompressed digital video from a DVI device (page 35).
- 19** **Digital Audio (optical) (output terminal)** — For use when connecting an amplifier with optical type digital audio input (page 33).

Learning about the remote control

Location of controls

To switch between Analog and Digital TV (page 11)

Power on/Standby (page 12)

Number buttons (0-9) (pages 16, 24)

- Input source selection (1 - 2, HDMI1, HDMI2, PC) (page 25)
- To access sub-pages when in teletext - analog only - (page 26)

To return to the previous program (page 16)

To display digital on-screen information (page 29)

To switch between Navigation List and Favorite List (pages 16, 31)

MENU (page 11)

EXIT (page 12)

- Menu ^ v <> (page 11)
- OK** (pages 11, 25)

Volume - + (These buttons adjust the volume level.)

Program position ▲▼ (page 16)

- To display on-screen information (page 16)
- Initial/index function for Teletext - analog only - (page 28)

To select TV, STB or DVD mode

- **TV/D** Stereo/bilingual selection (page 22)
- **AUDIO** To display the Audio Track menu in Digital TV (page 32)

Teletext on/Superimpose Teletext/off (pages 28)

Sound mute (This button turns off/on the sound.)

When using Toshiba STB or DVD,
 press **PAUSE** *
 press **PLAY** **
 press **REVERSE**
 press **FORWARD**
 press **EJECT**
 press **STOP**
 press **SKIP REVERSE**
 press **SKIP FORWARD**
 * For HDD-J35 and HDD-S36, this is also the PLAY key.
 ** Not applicable to HDD-J35 and HDD-S36, where the PLAY key is shared with PAUSE.

When in TV mode:
 • **Picture still** (page 19)
 • **Picture size selection** (page 18)
 • **Picture mode selection** (page 19)
 • **Digital subtitle on/off** (page 31)

When in teletext - analog only:
 • To reveal concealed text (page 28)
 • To hold a wanted page (page 28)
 • To enlarge teletext display size (page 28)
 • To select a page while viewing a normal picture (page 28)
 • To select the time display (page 28)

Teletext control buttons (Four colored buttons : Red, Green, Yellow, Blue) (page 27)

TOSHIBA
CT-90263

This integrated TV is equipped with both Digital and Analog system. To switch between Digital and Analog TV press **ATV/DTV** on the remote control.

Learning about the menu system

We suggest you familiarize yourself with the display charts before using the menu system:

- Press **MENU** to display menu, then press **<** or **>** to select main menu headings.
- Press **∨** or **∧** to select an item.
- Press **<** or **>** to select or adjust setting.
- Press **OK** to display the next menu.

Displaying the DIGITAL SETTING chart

This menu will display only Digital TV selected.

PROGRAM menu

SCAN menu

SYSTEM menu

PROFILE menu

TV SETUP menu

Displaying the TV SETUP menu chart

When Analog TV is selected, press **MENU** will display the TV SETUP menu.

When Digital TV is selected, select the TV SETUP menu from DIGITAL SETTING chart.

There will be some functions which not available in Digital TV and these will appear in gray scale.

PICTURE menu

SOUND menu

SET UP menu

TIMER menu

FUNCTION menu

Notes for menu system:

- In the video input mode (⏪1, ⏩2), **Auto tuning** and **Manual tuning** are not available. Instead, **Manual setting** appears in the **SET UP** menu (🔍 page 25).
- If you connect external equipment via component video source to external input, **Color system** selection in the **Manual setting** menu is not available.
- If you do not make a selection for a while, the menu display disappears automatically.
- If you want to close the menu display instantly, press (EXIT).
- To return to the previous menu, press (MENU).
- In the PC input mode, **PC Setting** appears in the **SET UP** menu (🔍 page 38).
- In the 480i or 576i input signals mode, you can select the **Cinema mode** in the **PICTURE** menu (🔍 page 21).
- When you use the color management function (🔍 page 20), you can select the **Base color adjustment** in the **PICTURE** menu.

Turning the TV on

Switching on the TV

Connect the power cord to a wall outlet.

- 1 Press (⏻) on the TV left side until it clicks.



The (⏻) Power indicator lights in red to indicate to standby. Press (⏻) on the remote control or (⏻) on the TV top or front panel, power indicator will be green to indicate to turn on.

Notes:

- When the TV is turned on from (⏻) on the left side (full power cut-off mode), a start-up time of approximate 25 seconds is required before entering the standby mode. During this time, no function can be activated with the remote control or the buttons on the TV. This is not a malfunction of the TV.
- If you watch black and white programs when the color system mode is set to Auto, color noise may appear on the screen. In this case select the appropriate Color system (For the system of each country or region, refer to pages 15 and 41).

Switching off the TV

- 1 Press (⏻) on the remote control or (⏻) on the TV top or front panel to switch to the standby mode.
- 2 To switch the TV off, press (⏻) on the TV left side. Power indicator will be turned off.

Notes:

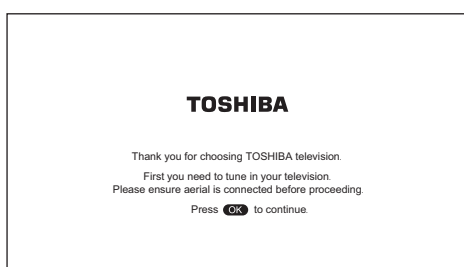
- This TV is not fully disconnected from the main supply, as minute current is consumed even when (⏻) is turned off. When the TV will not be used for a long period of time, such as during vacation or travel, remove the power plug from the wall outlet.
- The TV will automatically turn itself off after approximately 15 minutes if it is tuned to a vacant channel or a station that completes its broadcast for the day. This function does not work in external input or Blue screen Off mode. The TV will automatically turn itself off after approximately 2 hours if you do not operate the TV after turned on by on timer function.
- If power is cut off while you are viewing the TV, the Last Mode Memory function turns on the TV automatically when power is applied again. If power is going to be off for a long time and you are going to be away from your TV, unplug the power cord to prevent the TV from turning on in your absence.

Tuning the TV for the first time

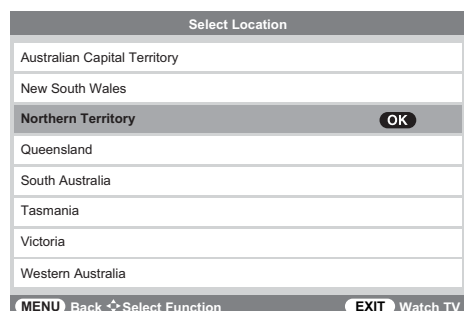
- digital only -

Before switching on the TV, put your decoder and media recorder to **Standby** if they are connected and ensure the antenna is connected. To setup the TV use the buttons on the remote control as detailed on page 10.

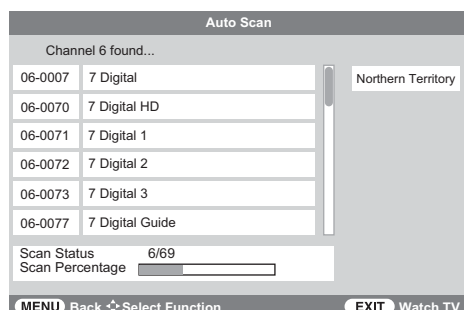
- 1 Press $\text{I/}\downarrow$, the **Welcome** screen will appear. This screen will appear the first time that the TV is switched on and each time the TV is reset.



- 2 Press **OK** to proceed.
- 3 The **Select Location** screen will appear. Press \downarrow or \uparrow to select the state in which you live.



- 4 Press **OK** to start tuning. The **Auto Scan** screen will appear and the TV will automatically start to search for available stations. The progress bar will move along the line.



- 5 When the search is completed, the TV will automatically turn to the lowest logical channel number. See the following for more details on **Auto Scan**.

Note:

If you do not live in Australia, press **EXIT** at the **Select Location**. Press **MENU**, then press \leftarrow or \rightarrow to select **PROFILE**. Press \downarrow or \uparrow to select **Time Zone** to set your time zone (see page 24). Then use **Manual Scan** to start tuning (see page 14).

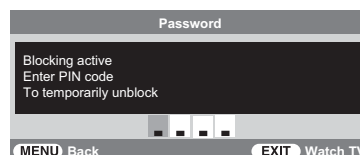
Programming channels into the TV's channel memory

Auto scan - digital only -

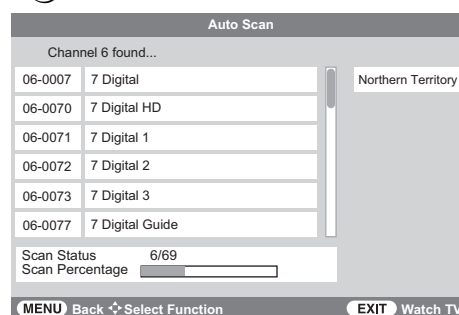
As new services are broadcast, it will be necessary to re-tune the TV in order to view them.

Auto scan will completely re-tune the TV and can be used to update the channel list. It is recommended that Auto scan is run periodically to ensure that all new services are added. All stored programs and settings, including Timer entries, favorites and locked programs, will be lost.

- 1 Press **MENU** and \leftarrow or \rightarrow to select the **SCAN** menu.
- 2 Use \downarrow to select **Auto Scan**.
- 3 Press **OK** to display **Password**. Enter your password (see page 29) using the **number** buttons or press 0000 (which is the default password).



- 4 The **Select Location** will appear. Current location will be highlighted. Press \downarrow or \uparrow to select a state in which you live.
- 5 Press **OK**, a confirmation screen will appear indicating that **All existing channels will be deleted**. **Continue?** select **Yes**.
- 6 Press **OK** to start Auto tuning.



The above sample display shows **Auto Scan** in progress. The channel number is shown as "06-0007" etc., where "06" is the physical channel number and "0007" is the logical channel number (which is the 4-digit number you enter when changing channels).

- 7 When the search is complete, the TV will automatically tune to the lowest logical channel number.

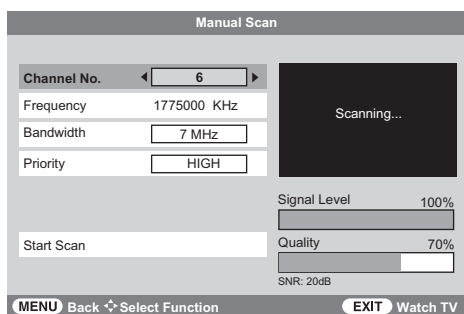
Note:

After the **Auto scan**, the TV may have scanned identical channels being broadcast from different transmitters. You can verify this by **previewing** those channels in the **Channel List** with identical logical numbers and check on their physical channel numbers (page 30). If you do find channels with the same logical channel numbers but different physical channel numbers, it is recommended that you delete these duplicate channels and keep only one channel with the best signal strength as indicated by the SNR indicator in the I-Plate (page 16) display.

Manual scan - digital only -

If there were any missing channel after **Auto Scan**, these channels might be found by using **Manual Scan** described in this section. Also, if you do not live in Australia, you must use **Manual Scan** to scan those channels in your country.

- From the **SCAN** menu, press \downarrow or \uparrow to select **Manual Scan**, then press **OK**.
- Enter password using the **Number** buttons or press 0000 (which is the default password), then **Manual Scan** will appear.



- Press \downarrow or \uparrow to select the item you wish to adjust. For Australia, to adjust **Frequency**, you may refer to the latest channel table from local dealer. And the **Bandwidth** is 7MHz and **Priority** should be set to **HIGH**. Then press \downarrow or \uparrow to select **Start Scan** and press **OK** to start scanning.
- If scanning was successful, **Get Channel Success** appeared for 2 seconds. Repeat to scan other channels as necessary.
- If scanning was unsuccessful, **Timeout Error** appeared. At this point you can rescan the signal or refer to the **Signal Level** bar and **Quality** for aligning the direction of the antenna to get the signal. Refer to your antenna installer if problem persists.

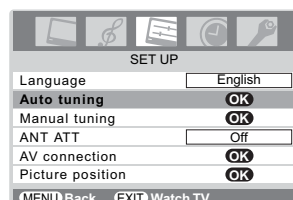
Notes:

- Signal level** refers to the input Radio Frequency (RF) signal strength as perceived by the TV. Note that too strong signal may cause erroneous readings. If you use an antenna booster and find that you still get a low signal level, your booster gain may be set too high. In this case, adjust the gain accordingly. You may also see the **No Signal** on the screen when the signal level is low.
- Quality** refers to the quality of the received digital signal. A high value of quality means that there are few errors in the signal. In the same way, a low value of quality implies that there are a large number of errors in the signal, which may cause distortions in video and audio.

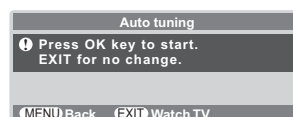
Programming channels automatically**- analog only -**

First, use the Auto tuning function to preset all the active channels in your area automatically. Then, arrange the preset channels with the Manual tuning function so that you can tune into only desired channels.

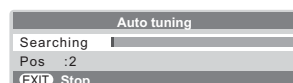
- Press **MENU**, then press \leftarrow or \rightarrow to display the **SET UP** menu.
- Press \downarrow or \uparrow to select **Auto tuning**.



- Press **OK** to display the **Auto tuning** menu.



- Press **OK** to start the automatic search. The search will begin for all available stations.



The slide bar will move along the line as the search progresses.

If you make a mistake, simply repeat steps 1-4 to start again from the beginning.

- When the automatic search is completed, the TV will automatically return to the first program position.
- Press **P▲** or **P▼** to view the programmed position.

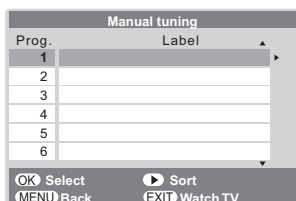
Note:

When you preset the program channel which sound of broadcast transmission system adopts "M" system, the sound system may not be tuned correctly if the radio waves transmit badly. At that time, preset the channel by **Manual tuning**. The countries such as Myanmar, Brazil, Chile, Colombia apply to this case. See page 41 for more details.

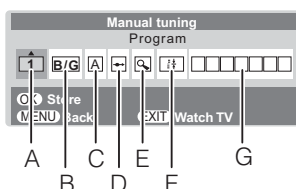
Manually setting channels in the channel memory - analog only -

Use the Manual tuning operation if desired channels cannot be preset with the Auto tuning or if you would like to preset channels to specific position numbers one by one.

- From the **SET UP** menu, press \blacktriangledown or \blacktriangle to select **Manual tuning**.
- Press OK to display the **Manual tuning** menu. Press \blacktriangledown or \blacktriangle to select the program position you want to arrange.



- Press OK to display the breakdown menu. Press \blacktriangleleft or \blacktriangleright to select an item, then press \blacktriangledown or \blacktriangle to select the item as shown below.



- Program position selection
- Sound system (see page 41)
- Color system (see page 41)
 - A** : Automatic (factory set), **P** : PAL, **S** : SECAM
 - N4** : NTSC 4.43 (MHz), **N3** : NTSC 3.58 (MHz)

If the color of a certain channel is abnormal, the automatic color system selection (A) may have malfunctioned, or sound system selection is wrong. In such a case, select another color and/or sound system (see page 41).
- Program position skip selection

Press \blacktriangledown or \blacktriangle to turn the program position skip option on “ \blacktriangleleft ” or off “ \blacktriangleright ”.

The program position will then be skipped when you select channels with **P▲** or **P▼**.

The “ \blacktriangleleft ” mark will appear beside a program position number when you use the **Number** button on the remote control.
- Channel search operation

Press \blacktriangle to search up the band or \blacktriangledown to search down the band.

Press \blacktriangledown or \blacktriangle repeatedly until your desired channel is displayed.

When a station/satellite is found, it will be displayed. NEVER PRESS ANY OTHER BUTTONS WHILE THE SET IS TUNING.
- Auto Fine Tuning

Press \blacktriangledown or \blacktriangle to turn the Auto Fine Tuning option on “ # ” or off “**0**”.

The Auto Fine Tuning function automatically corrects slight fluctuations when receiving signals.

Manual Fine Tuning

While the Auto Fine Tuning turn off “**0**”, press \blacktriangledown or \blacktriangle so that the better picture and sound are obtained.

G. Label

Station labels appear under the program position display each time you turn on the TV, select a channel, or press E1 .

To change or create station labels:

- Press \blacktriangledown or \blacktriangle repeatedly to select a character for the first space, then press \blacktriangleright .

A Z () * + , - / 0 9 *

*(blank space)

- Repeat step 1) to enter the rest of the characters. If you would like a blank space in the label name, you must choose a blank space from the list of characters.

Press OK to store your settings.

Watching TV programs

Viewing Digital programs - digital only -

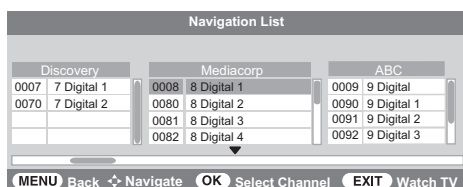
After you have tuned the TV, you have several ways to navigate through all programs:

- Press the **Number** buttons (a channel number has 4-digits) and you may omit the leading zeroes, which will be appended automatically; (Please note that if you have channels with different frequencies but the same channel number, the TV will always tune to the first channel that has been stored into the channel database. To view the other duplicating channels, you can select the channels from the **Navigation List** (see below) or use the P▲ / P▼ buttons.)
- Press P▲ / P▼ to view the previous and next program. The channels are arranged in ascending order according to the channel number.
- Press twice to display **Favorite channel** list and press ▼ or ▲ to select a program, then press to view the favorite program. Alternatively activating the **Favorite Mode**, then press ▼ or ▲ to select channels in **Favorite channel** list. See page 31 for more details.

Selecting channel from Navigation List

- digital only -

- 1 When viewing in Digital TV, press to display the **Navigation List**.



- 2 Press ▼, ▲, < and > to select previewed program, then press .
- 3 Press to exit the menu and watch the previewed channel.
- 4 Press twice to display **Favorite channel** list.

Changing the program position - analog only -

- 1 Enter the desired program position number using the **Number** buttons on the remote control. For program positions below 10, use 0 and the required number e.g., for program position 1.
- 2 You can also change the program position by using P▲ or P▼.
The program position will be displayed on the screen with the Mono/Stereo/Dual audio status.

Note:

The program position selection change between different format channels takes several seconds.

Switching between two program positions

You can switch two program positions without entering actual position number each time.

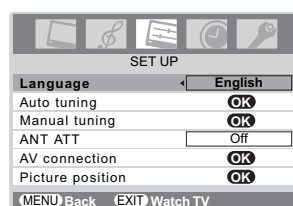
- 1 Select the first program position you want to view.
- 2 Select the second program position with the **Number** buttons (0-9).
- 3 Press . The previous channel will be displayed.

Each time you press , the TV will switch back and forth between the two program positions.

Selecting the menu language - analog only -

Choose from 9 different languages (English, Chinese (CS), Malay, Thai, Vietnamese, Russian, Arabic, Persian or French) for the On-Screen-Display.

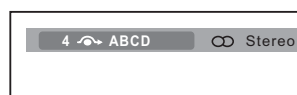
- 1 Press , then press < or > to display **SET UP** menu.
- 2 Press ▼ or ▲ to select **Language**.
- 3 Press < or > to select the desired language.



Displaying the on-screen information

- analog only -

- 1 Press to display the following on-screen information.



The information will disappear in 6 seconds.

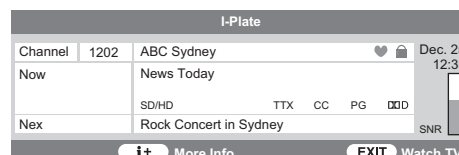
- Program position or external input mode selected
- Program skip on/off information
- Label (if set)
- Mono/Stereo/Dual audio status

- 2 To close the display instantly, press again.

On-screen information - digital only -

When viewing in Digital TV, the on-screen information (**I-Plate**) will give the details of the channel program currently being viewed.

- 1 Press to display the **I-Plate**.



I-Plate contains the following information:

- Current Channel Number
- Network Name
- Favorite status (indicated by a heart icon)
- Channel Lock status (indicated by a padlock icon on first I-Plate)
- Now and Next Program Names
- Current date and time
- Received program video format (SD/HD)
- Teletext availability (indicated by TTX)
- Subtitle (closed-caption) availability (indicated by CC)
- Parental Guidance code (PG, MA, G, R, etc.)
- Dolby® Digital audio track availability (indicated by DDD)
- SNR (which stands for Signal-to-noise ratio. A high SNR value means you have a reasonably good reception.)

2 Press **i+** again to display the extended program information (**Now** and **Next**) of the current TV channel.

Notes:

- The **Now** and **Next** information may not be present for some channels.
- When the **Parental Rate** is set to block, the padlock icon will appear next to the Parental Guidance code.

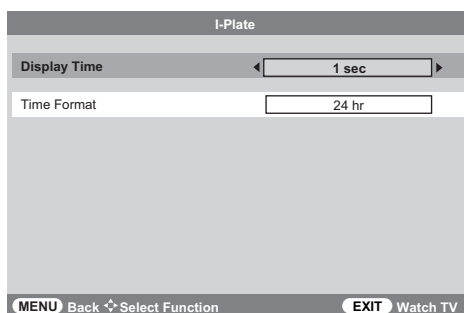


3 Press **i+** to switch between **Now** and **Next** extended program information.

4 To close the display instantly, press **EXIT**. Otherwise, the information will disappear after the expiration of the set display time.

Setting the I-Plate -digital only-

1 From the **PROFILE** menu, press **∨** or **∧** to select **I-Plate**, then press **OK**.



Display Time : The duration for which **I-Plate** will stay on the screen.

Time Format : The time to be displayed 24 hr or AM/PM format.

Notes:

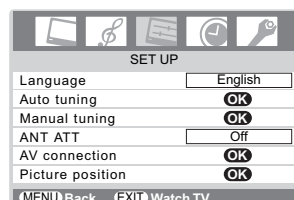
- **Time Format** changes will also affect the display of time in **EPG** (page 29).
- When you turn on the TV from standby, the **I-Plate** will be displayed for a slightly shorter duration than the value set in the **Display Time** setting.

Sorting program position -analog only-

- The TV is capable of receiving a number of different channels depending upon where you live.
- Program sorting is an easy way of storing each channel on the program position of your choice.

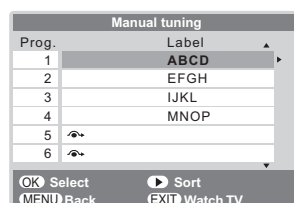
Ex.: To swap channel ABCD (Prog.1) for channel MNOP (Prog.4):

1 Press **MENU**, then press **<** or **>** to display the **SET UP** menu.

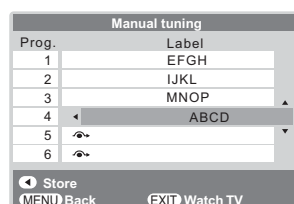


2 Press **∨** or **∧** to select **Manual tuning** menu, then press **OK**.

3 Press **∨** or **∧** to select the channel **ABCD**, then press **>**.



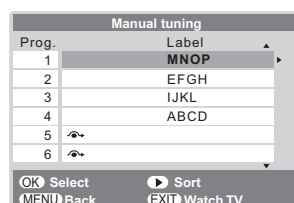
4 Press **∨** to select the new position "4", then press **<**.



5 Press **∧** to select the channel **MNOP**, then press **>**.

6 Press **∧** to select the new position "1", then press **<**.

7 Confirm new **Manual tuning** menu.



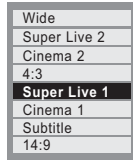
Using the TV's features (General)

Picture adjustment

Selecting the picture size

1 Press and hold **⏏** until the picture size list appears on the screen, then press **▼** or **▲** to select the appropriate picture size (or press **⏏** repeatedly to select required picture size directly).

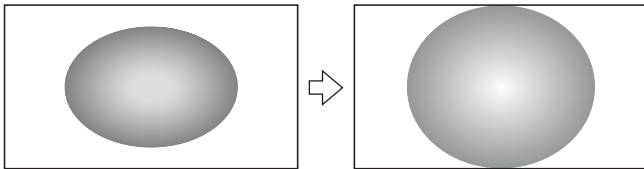
The antenna input signal



2 Press **OK**.

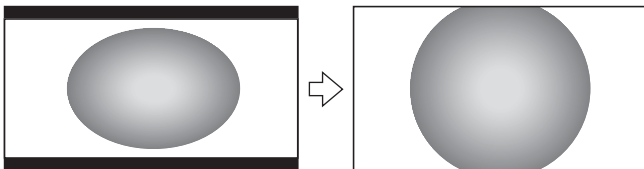
Super Live 1

When receiving "4:3 format" signal, this setting will enlarge the image to fit the screen by stretching the image vertically and horizontally, holding the better proportions at the center of the image.



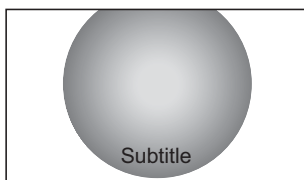
Cinema 1

When watching "letterbox format" films/video tapes, this setting will eliminate or reduce the black bars at the top and bottom of the screen by zooming in and selecting the image without distortion.



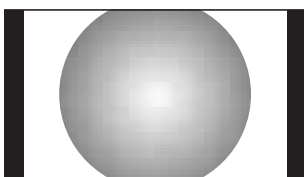
Subtitle

When subtitles are included on a letterbox format broadcast, this setting will raise the picture so that the most of text is displayed.



14:9

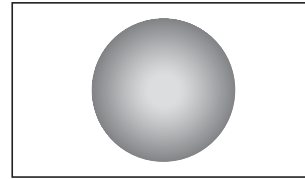
Use this setting when watching a 14:9 broadcast.



Wide

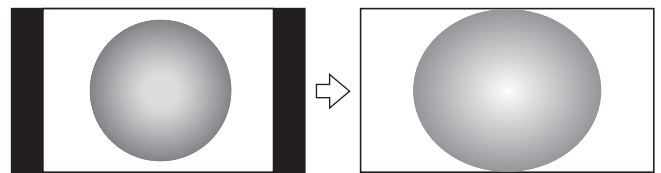
Use this setting when watching a wide-screen DVD, wide-screen video tape or a 16:9 broadcast (when available). Due to

the range of wide-screen formats (16:9, 14:9, 20:9 etc.), you may see bars on the top and bottom of the screen.



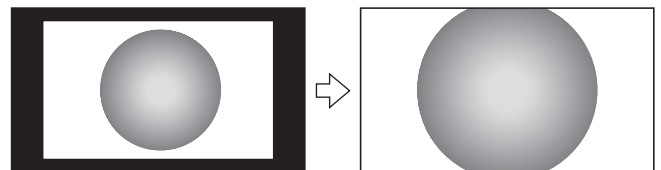
Super Live 2

When receiving "side panel format" signal, this setting will enlarge the image to fit the screen by stretching the image vertically and horizontally, holding the better proportions at the center of the image. Also the black bars on the both sides of the screen will eliminate or reduce.



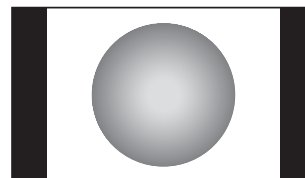
Cinema 2

When watching "all sides panel format" films/video tapes, this setting will eliminate or reduce the black bars on all the sides of the screen by zooming in and selecting the image without distortion.



4:3

Use this setting to view a true 4:3 broadcast.



Notes:

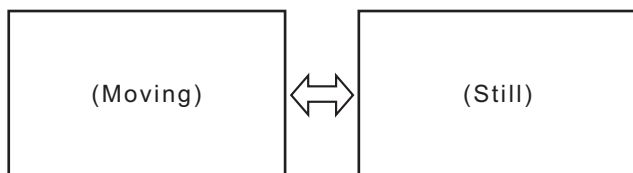
- Using the special functions to change the size of the displayed image (e.g. changing the height/width ratio) for the purpose of public display or commercial gain may infringe on copyright laws.
- If the aspect ratio of the selected format is different from the one of the TV transmission or video program, it can cause a difference in vision. Change to the correct aspect ratio picture size.
- In the PC input mode (see page 25), the picture size selection is wide or normal only.
- When DTV teletext (see page 28) or Subtitle (see page 31) is displayed, the picture size selection is not available.
- In Digital TV, the picture size selections are **Super Live 1**, **Cinema 1**, **Wide**, **Super Live 2**, **Cinema 2** and **4:3**. For 47WLT66A, when receiving Digital 1080i signal, you can additionally choose **Exact Scan**. Use this setting to view the same size of the display image as the broadcasted image.
- **Exact Scan** is also available with HDMI and component video1080i input of 47WLT66A.
- With **Exact Scan**, you may observe a shift in picture position. This is due to the signal source and is not a defect of the TV.

Using the picture still

- Press to freeze the picture.

Even if an image is frozen on the TV screen, the pictures are running on the input source. Audio continues to be output as well.

To return to a moving picture, press again.



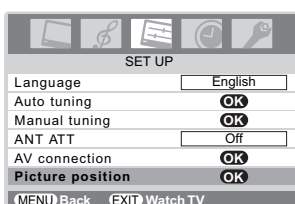
Notes:

- If you use this function except for the purpose of your private viewing and listening, it may infringe the copyright protected by the copyright laws.
- In the PC input mode (page 25), this function is not available.

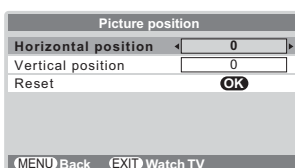
Adjusting the picture position - analog only -

Adjustment to the position of the picture may be made to suit your viewing preferences.

- Press , then press < or > to display the **SET UP** menu.
- Press the or to select **Picture position**.



- Press , then press or to select an item you want to adjust.



- Press < or > to adjust the settings as required.



Note:

When the picture format is in Wide or 4:3 mode, only the Horizontal position can be adjusted.

Resetting the picture position - analog only -

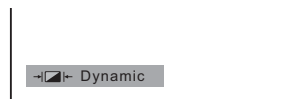
This function resets your picture position settings to the factory settings.

- From the **Picture position** menu, press or to select **Reset**.
- Press .

Selecting the picture mode

You can select the picture quality instantly among three preset modes and one user-set mode.

- Press to select the desired picture quality.



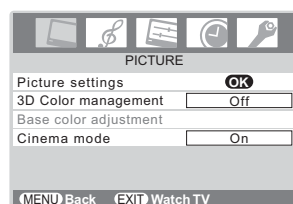
Mode	Picture quality
Dynamic	bright and dynamic picture
Standard	standard picture
Mild	soft picture
Memory	the picture quality you set

Note:

In the PC input mode (page 25), this mode is not available.

Adjusting the basic picture quality

- In Digital TV, press , then press < or > to display the **TV set up** then press .
- Press < or > to display the **PICTURE** menu.
- In Analog TV, press and < or > to display the **PICTURE** menu.



- Press or to select the **Picture settings** menu, then press .



- Press or to select an item you want to adjust, then press < or > to adjust the settings as required.



Selection	< Pressing >
Back light	darker lighter
Contrast	lower higher
Brightness	darker lighter
Color	paler deeper
Tint	reddish greenish
Sharpness	softer sharper

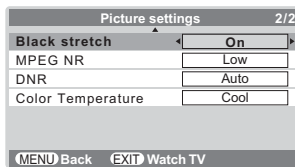
Notes:

- The **Tint** may only be adjusted on a tape which has been recorded and played back on an NTSC VCR.
- In the PC input mode (page 25), **Color**, **Tint** and **Sharpness** modes are not available.

Activating the black stretch

This function increases the strength of dark areas of the picture which improves definition.

- 1 From the **Picture settings** menu, press \downarrow or \uparrow to select **Black stretch** on the 2nd page.



- 2 Press \leftarrow or \rightarrow to select **On** or **Off**.



Note:

In the PC input mode (page 25), this mode is not available.

Activating the MPEG NR (Noise Reduction)

If the receiving signal of MPEG is a mosquito (grained) noise depending on the compression and conversion, the noise may be reduced when using this function.

- 1 From the **Picture settings** menu, press \downarrow or \uparrow to select **MPEG NR** on the 2nd page.
- 2 Press \leftarrow or \rightarrow to select **Off**, **Low**, **Middle** or **High**.



Note:

In the PC input mode (page 25), this mode is not available.

Activating the DNR (Digital Noise Reduction) - analog only -

If the receiving signal is weak and the picture is blurry, the picture may be improved when using this function.

- 1 From the **Picture settings** menu, press \downarrow or \uparrow to select **DNR** on the 2nd page.
- 2 Press \leftarrow or \rightarrow to select **Auto**, **Off**, **Low**, **Middle** or **High**.



Note:

This function is available for 480i and 576i signals.

Selecting the color temperature

You can change the tone of the picture by selecting from three preset color temperatures: **Cool**, **Normal** or **Warm**.

- 1 From the **Picture settings** menu, press \downarrow or \uparrow to select **Color Temperature** on the 2nd page.
- 2 Press \leftarrow or \rightarrow to select mode you prefer.



Cool: Lends a blue hue to the picture.

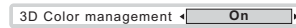
Normal: Neutral

Warm: Lends a red hue to the picture.

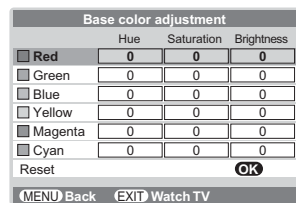
Adjusting the color management

You can adjust the picture color quality by selecting from 6 base color adjustments : **Red**, **Green**, **Blue**, **Yellow**, **Magenta** or **Cyan**.

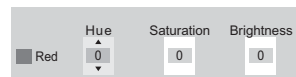
- 1 Press MENU , then press \leftarrow or \rightarrow to display the **PICTURE** menu.
- 2 Press \downarrow or \uparrow to select **3D Color management**, then press \leftarrow or \rightarrow to select **On**.



- 3 Press OK , then press \downarrow or \uparrow to select **Base color adjustment**.
- 4 Press OK , then press \downarrow or \uparrow to select an item you want to adjust.
- 5 Press \rightarrow , then press \leftarrow or \rightarrow to select **Hue**, **Saturation** or **Brightness**.



- 6 Press \downarrow or \uparrow to adjust the settings as required.



Notes:

- If you select color management **Off** mode, this mode is not available.
- In the PC input mode (page 25), this mode is not available.

Resetting the base color adjustment

The Reset function adjusts the base color adjustment to the factory settings.


- 1 From the **Base color adjustment** menu, press \downarrow or \uparrow to select **Reset**.
- 2 Press OK .

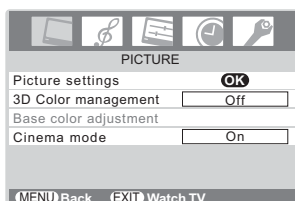
Using the cinema mode - analog only -

A movie film's picture runs at 24 frames a second, whereas movie software such as DVD, etc., that you enjoy watching on television at home runs at 30 (NTSC) or 25 (PAL) frames a second. To convert this signal to reproduce a smooth motion and picture quality, select the **On** mode.

Effective signal and setup conditions:

- When the Video input mode is selected.
- When the input signal format is 480i and 576i signals.

- 1 Press , then press < or > to display the **PICTURE** menu.




- 2 Press \vee or \wedge to select **Cinema mode**, then press < or > to select **On** or **Off**.

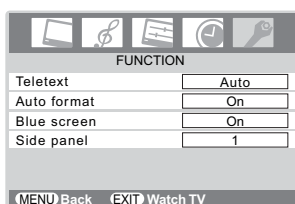
Note:

When a DVD movie with subtitle is playing back, this mode may not work correctly.

Using the auto format

When the TV receives a true HDMI signal picture and the auto format is On, it will automatically be displayed in HDMI signal format, irrespective of the TV's previous setting. When in Digital TV, the display format will follow the broadcasted format.

- 1 Press , then press < or > to display the **FUNCTION** menu.

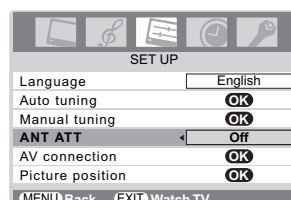


- 2 Press \vee or \wedge to select **Auto format**, then press < or > to select **On** or **Off**.

Activating the ANT ATT (Antenna Attenuation)

If the signal being received by the TV is too strong, this may result in picture interference and/or buzzing sound. Setting **ANT ATT** to **On** reduces signal strength, and can help to remove the interference.

- 1 From **SET UP** menu, press \vee or \wedge to select **ANT ATT**.
- 2 Press < or > to select **On** or **Off**.



Sound adjustment

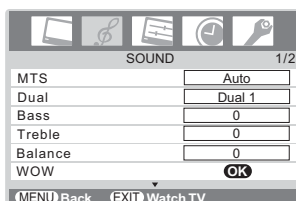
Setting the MTS (Multi-channel TV Sound)

- analog only -

Auto mode

The MTS Auto mode automatically recognize stereo/bilingual programs depending on the broadcast signal.

- 1 Press **MENU**, then press **<** or **>** to display the **SOUND** menu.



- 2 Press **∨** or **∧** to select **MTS**, then press **<** or **>** to select **Auto** or **Mono**.

Mono mode

If you experience noise or poor reception of any stereo/bilingual program, set the **MTS** mode to **Mono**. Noise will be reduced and reception may improve.

Note:

If you experience noise with a particular program on whose channel reception is usually good, try setting MTS mode to **Auto**, then switch **DUAL** to **Mono** (monaural) (see page 22).

Selecting the dual 1 or dual 2 mode

- analog only -

You can hear only dual 1 or dual 2 sound selected, whenever bilingual programs are received.

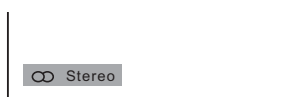
- 1 Press **MENU**, then press **<** or **>** to display the **SOUND** menu.
- 2 Press **∨** or **∧** to select **Dual**, then press **<** or **>** to select **Dual 1** or **Dual 2**.

Notes:

- When the MTS setting is in **Mono** mode, the **Dual** menu is not selectable.
- The **Dual** menu setting status remains even if the TV is turned off.

Selecting the stereo programs - analog only -

- 1 When a stereo program is received, **∞ Stereo** appears.
- 2 Press **DUAL** to select the stereo/monaural mode. **∞ Stereo** and **○ Mono** appear cyclically on the screen.



Selecting the bilingual programs - analog only -

- 1 When a bilingual program is received, **○ Dual** appears.
- 2 Press **DUAL** to select the sound to be heard. The sound differs according to the transmission system: NICAM or German stereo/bilingual broadcast.



Display	Sound to be heard	
	NICAM	German stereo/bilingual broadcast
<input checked="" type="radio"/> Dual 1	Sub I sound	Main sound
<input checked="" type="radio"/> Dual 2	Sub II sound	Sub sound
<input type="radio"/> Mono	Main sound	—

Note:

These settings are not stored in the TV memory.

Adjusting the sound quality

- 1 From the **SOUND** menu, press **∨** or **∧** to select an item you want to adjust.
- 2 Press **<** or **>** to adjust the settings as required.



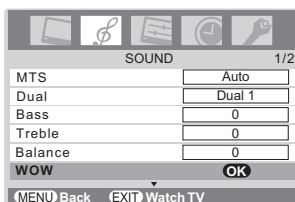
Selection	< Pressing	>
Bass	weaker	stronger
Treble	weaker	stronger
Balance	decreases the right channel	decreases the left channel

Using the SRS WOW surround sound

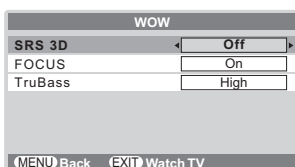
SRS WOW is a special combination of SRS Labs audio technologies that creates a thrilling surround sound experience with deep, rich bass from stereo sound sources. Your TV's audio will sound fuller, richer and wider.

WOW consists of three features; SRS 3D, FOCUS, and TruBass, being turned on.

- 1 From the **SOUND** menu, press \downarrow or \uparrow to select **WOW**, then press **OK**.



- 2 Press \downarrow or \uparrow to select an item you want to adjust, then press \leftarrow or \rightarrow to adjust the settings as required.




SRS 3D: To turn the surround effect **On** or **Off**.

FOCUS: To turn the vocal emphasis effect **On** or **Off**.

TruBass: To select the desired bass expansion level (**Off**, **Low** or **High**).

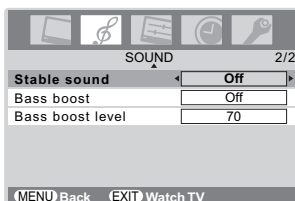
Notes:

- If the broadcast is monaural, the SRS 3D effect does not work.
- WOW, SRS and  symbol are trademarks of SRS Labs, Inc.
- WOW technology is incorporated under license from SRS Labs, Inc.
- The SRS WOW effect is active only when the sound outputs from the speaker.

Using the stable sound

The Stable sound function limits the highest volume level to prevent extreme changes in volume when the signal source changes (for example, to prevent the sudden increase in volume that often happens when a TV program switches to a commercial).

- 1 Press **MENU**, then press \leftarrow or \rightarrow to display the **SOUND** menu.
- 2 Press \downarrow or \uparrow to select **Stable sound** on the 2nd page.



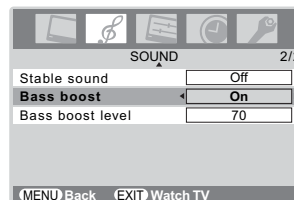
- 3 Press \leftarrow or \rightarrow to select **On** or **Off**.

Note:

The Stable sound effect is active only when the sound outputs from the speaker.

Using the bass boost

- 1 From the **SOUND** menu, press \downarrow or \uparrow to select **Bass boost** on the 2nd page.
- 2 Press \leftarrow or \rightarrow to select **On**.



- 3 Press \downarrow to select **Bass boost level**.
- 4 Press \leftarrow or \rightarrow to adjust the Bass boost level.
- 5 To turn off the Bass boost, press \downarrow or \uparrow to display **Bass boost**, then press \leftarrow or \rightarrow to select **Off**.

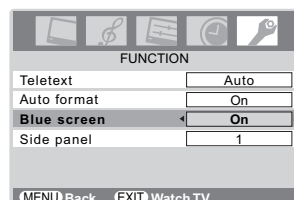
Note:

The Bass boost effect is active only when the sound outputs from the speaker.

Activating blue screen

With the blue screen function **On**, the screen will automatically turn blue and the sound will be muted when no signal is being received.

- 1 Press **MENU**, then press \leftarrow or \rightarrow to display the **FUNCTION** menu.
- 2 Press \downarrow or \uparrow to select **Blue screen**.



- 3 Press \leftarrow or \rightarrow to select **On** or **Off**.

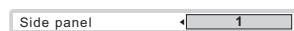
Note:

In the PC input mode (page 25), this function is not available.

Adjusting the brightness of side panel

You can adjust the brightness of side panel in 14:9 or 4:3, etc. mode.

- 1 From the **FUNCTION** menu, press \downarrow or \uparrow to select **Side panel**.
- 2 Press \leftarrow or \rightarrow to adjust the settings as required.

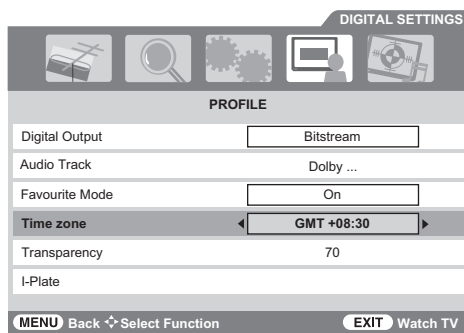


The timers

Setting the Time zone - digital only -

This function allows you to manually set the time zone and override the location that you have chosen during Auto Scan. This is to be used when you move out of Australia to country with different time zone. Please note that if you manually change the time zone setting, all existing entries in the program timer will become invalid as they are still based on the old time zone. It is recommended that you delete all the entries in the program timer before proceeding with steps described below.

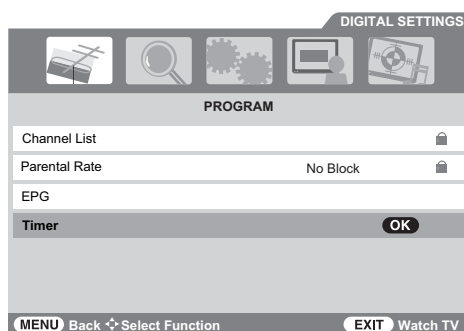
- 1 From the **PROFILE** menu, press \downarrow or \uparrow to select **Time zone**.
- 2 Press \leftarrow and \rightarrow to select the local time zone.



Program Timer - digital only -

This function will set the TV to go to a specific channel at a certain time. It can be used to view a particular program, or by setting the mode to daily or weekly, can be used to view a series of programs.

- 1 Press MENU , then \leftarrow or \rightarrow to select the **PROGRAM** menu.
- 2 Press \downarrow or \uparrow to select **Timer**, then press OK .

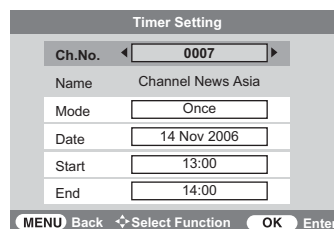


- 3 Press \downarrow or \uparrow to select an empty slot to program a timer or any existing program to be edited, then press OK .

Ch. No.	Channel Name	Mode	Date	Start	End
0006	Channel 5	Weekly-Sat	18 Nov 2006	20:30	21:00
0007	Channel News Asia	Daily	14 Nov 2006	00:00	00:00
0008	Channel 8	Daily	14 Nov 2006	00:00	00:00
0009	Channel U	Once	14 Nov 2006	00:00	00:00

The screenshot also shows the date and time 'Tuesday, 14 Nov 2006 06:44' and navigation buttons at the bottom: MENU Back, Select Function, OK Edit Timer, Delete, and EXIT Watch TV.

- 4 Press \downarrow and \uparrow to select **Ch. No.** and \leftarrow or \rightarrow to choose the channel you want. Press \downarrow and \uparrow to select **Mode** and \leftarrow or \rightarrow to choose **Once**, **Daily** or **Weekly**. Then use the **Number** buttons to set time for **Date**, **Start** and **End** in 24-hour format.



- 5 Press OK to save. If you have locked channel or activating **Parental Rate**, enter password when prompted.
- 6 If the new entry causes a conflict with the existing entries (i.e. overlapping recording time), the new entry will not be saved.
- 7 To delete a selected entry, press the Red button, then use \downarrow or \uparrow to select **Yes**, then press OK . (All fields will be cleared).

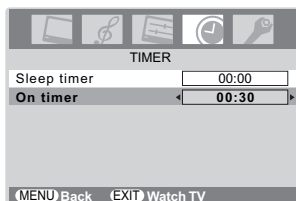
Notes:

- When a timed program is about to start, an information screen will appear indicating the change of current channel. The menus and other channels will not be available during the timed program unless the program timer is cancelled. When the program timer expires, the TV switches to the channel from which it is switched from.
- If timer action occurs when the TV is in standby, the TV will turn on but no picture is seen and no sound is heard. Selected digital channel will be at the DIGITAL TV output terminals (see page 9). The selected channel can be watched or recorded via the DIGITAL TV output terminals.
- When the timer table is empty, the DTV timer LED (see page 8) will be off. When the timer table contains at least one entry, the DTV timer LED will be set to red. If timer action is in progress, the DTV timer LED will be changed from red to yellow.
- If Menu or EPG is still open when timer action is scheduled to start, the Menu or EPG will be closed automatically and then the timer will start.

Selecting the timer menu - analog only -

The Timer is especially useful if you want the TV to turn itself on or off after a selected period of time.

- 1 Press **MENU**, then press **<** or **>** to display the **TIMER** menu.



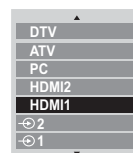
- 2 Press **↓** or **↑** to select the required timer mode (**Sleep timer** (Turn off the TV) or **On timer**). The timer display will set by 10 minutes, up to 12 hours and 50 minutes.
- 3 Press the **Number** buttons (0-9), **<** or **>** to set the On or Off delay time.
- 4 Press **EXIT** to exit the menu. Set the Standby mode by pressing **1/2** on the remote control or **⏻** on the TV. Activation of the Timer is indicated by the green "On-timer indicator", on the front of the TV (see page 8).

Notes:

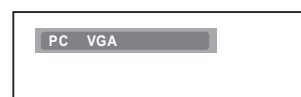
- The TV will automatically turn itself off after approximately 2 hours if you do not operate the TV after turned on by on timer function.
- If you press and hold **<** or **>** to set the On or Off delay time, the timer display will set by 30 minutes, up to 12 hours 30 minutes.

Selecting the video input source to view

- 1 Press and hold **↻** on the remote control until the video input mode list appears on the screen, then press **↓** or **↑** to select appropriate input source (or press **↻** on the TV top or front panel or **↻** on the remote control repeatedly to select required input source directly). In Analog TV, you may also press **OK** to display the video input mode list.



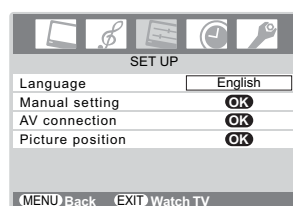
Ex. PC VGA mode



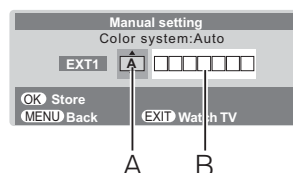
- 2 Press **OK**.
↻ 1 (**↻** (1), video 1 input) or **↻** 1C (component video input),
↻ 2 (**↻** (2), video 2 input) or **↻** 2S (S-video input),
 HDMI1, HDMI2 (**↻** HDMI1 or **↻** HDMI2, HDMI input),
 PC (**↻** RGB/PC, PC input)
 ATV (Analog TV)
 DTV (Digital TV)

Setting the manual setting menu - analog only -

- 1 Press **MENU**, then press **<** or **>** to display the **SET UP** menu.



- 2 Press **↓** or **↑** to select **Manual setting**, then press **OK**.
- 3 Press **<** or **>** to select an item, then press **↓** or **↑** to select the item as shown below.



- A. Color System
 Confirm that color system is set to "A" (Auto). If not, select "A" with **↓** or **↑**.
- B. Video label
 The video label allows you to label each input source for your TV.
 To change or create video labels:

- 1) Press \downarrow or \uparrow repeatedly to select a character for the first space, then press \rightarrow .

A → Z → (←) → * → + → , → - → . → / → 0 → 9 → □ *

*(blank space)

- 2) Repeat step 1) to enter the rest of the characters. If you would like a blank space in the label name, you must choose a blank space from the list of characters.
- 3) Press \odot to store your settings.

Teletext in Analog TV

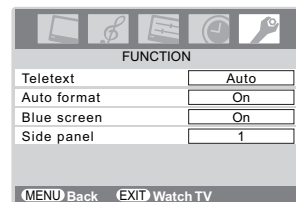
This TV has a multi-page teletext memory, which takes a few moments to load and it offers two ways of viewing Teletext **Auto** and **LIST** which are explained below.

Setting up the teletext mode

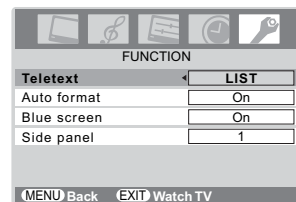
To select teletext mode:

Select a channel position with the desired teletext service.

- 1 Press \odot (MENU), then press \leftarrow or \rightarrow to display the **FUNCTION** menu.



- 2 Press \downarrow or \uparrow to select **Teletext**, then press \leftarrow or \rightarrow to select **Auto** or **LIST** mode.



Note:

When you are watching the teletext program, **SET UP** menu and **FUNCTION** menu are not selectable.

Teletext general information

$\equiv/\text{TV}/\square$ button:

Pressing $\equiv/\text{TV}/\square$ once will bring up the teletext screen. Press again to superimpose the teletext over a normal broadcast picture. Press again to return to normal TV mode. You need to return to normal viewing if you wish to change channels.

When you first press $\equiv/\text{TV}/\square$ to access the text service, the first page you see will be the initial page.

In **Auto** mode, this displays the main subjects available and their relevant page numbers.

In **LIST** mode, you will see the page numbers currently stored on the **each color** button.

Sub-pages:

Once in this chosen page, if there are sub-pages they will automatically load into memory without changing the one you are reading. If there are many sub-pages, it will take a long time for them all to load and this will depend on the speed with which the broadcaster transmits them.

To access the sub-pages in memory, press TV , then use \blacktriangle / \blacktriangledown to view them.

Note:

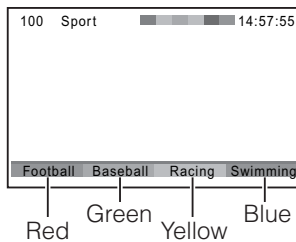
If you press TV while the picture mode is activated, this mode will be cancelled.

Using Auto mode

There are two Modes: **Auto** will display FASTEXT or TOPTXT, if available. **LIST** will display your four favorite pages. In either mode, as an alternative to the colored buttons, you can access a page by entering a 3-digit number, using the **Number** buttons on the remote control, or to advance to the next page, press **P▲**, to go back to the previous page press **P▼**. To change between **Auto** and **LIST**, see above.

- Press / /  to access teletext.

Ex. FASTEXT



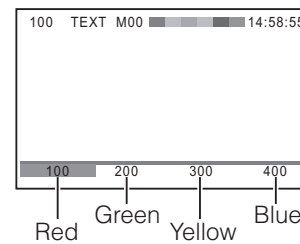
If FASTEXT or TOPTXT is available, you will see 4 colored titles at the bottom or top of the TV screen respectively. To access any given subject, simply press the relevant colored button on the remote control.

If FASTEXT or TOPTXT is not available, you can access any page simply by entering a 3-digit page number or pressing the corresponding colored button.

For further information on your particular text system(s), see the broadcast teletext index page or consult your local Toshiba dealer.

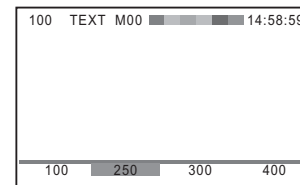
Using LIST mode

- 1 Press / /  to access teletext.


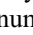


The four choices at the bottom of the screen are now number – **100, 200, 300** and **400**, which have been programmed into the TV's memory.

- 2 To view these pages, use the colored prompt buttons. e.g. press the Green button to view page 200.
- 3 If you want to change these stored pages, press the colored button for the color you want to change. e.g. Press the Green button and enter the 3-digit number.



This number will change in the top left of the screen and in the colored highlight.

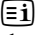
- 4 Press  to store your choice. The bars at the bottom of the screen will flash white.
- 5 You may view other pages by simply entering the 3-digit page number – but NEVER press  or you will lose the favorite already stored.

Teletext buttons on the remote control


Below is an introduction to the teletext buttons on your remote control and their functions.

To display an index/initial page:

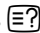
In Auto-mode

Press  to access the index page. The one displayed is dependant on the broadcaster.

In LIST-mode

Press  to return to the 100 page or initial page.


To reveal concealed text:

Some pages cover topics such as quizzes and jokes. To discover the solutions, press .


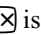
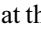

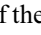
To hold a wanted page:

This function is included as it is part of the broadcast teletext system but you will not need it as this TV allows you to control the display of sub-pages.

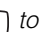
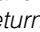
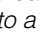
To enlarge the teletext display size:

Press  once to enlarge the top half of the page, press again to enlarge the bottom half of the page. Press again to revert to the normal size.


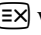
/ To select a page while viewing a normal picture:

When in teletext mode, if a page selection is made and then / is pressed, a normal picture will be displayed. The TV will indicate when the page is present by displaying the title bar of the text page at the top of the screen. Press // to view the page.

Note:

It will not be possible to change program position while in Teletext mode, you will have to cancel the teletext first by pressing // to return to a normal TV picture.


To select the time display:

If you press / while watching a normal TV broadcast, you will see a time display from the broadcaster. It will remain on the screen for about 5 seconds.

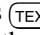
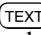

9:56 and 25 seconds p.m.



Note:

If you press  while this mode is activated, this mode will be cancelled.

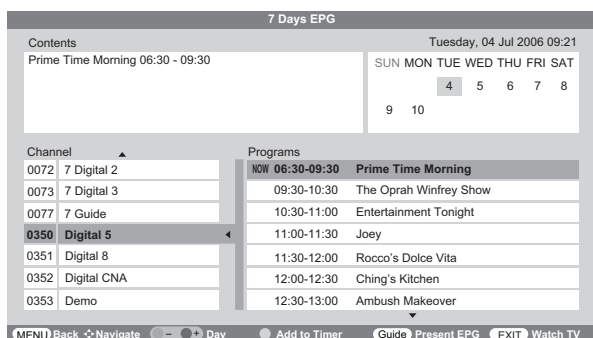
Teletext in Digital TV

- 1 When I-Plate indicates the presence of Teletext (TTX) in a channel, press  to view Teletext. Press  again to superimpose the Teletext over a normal broadcast picture. Press again to close Teletext and watch TV.
- 2 Press **P▲** and **P▼** to select Teletext page. Press the **Number** buttons to input a Teletext page to view the page directly. If FASTEXT is available, simply press the relevant colored button on the remote control.
- 3 Press  to close the Teletext and watch TV.

Other Digital TV features and settings

Setting the EPG (Electronic Program guide)

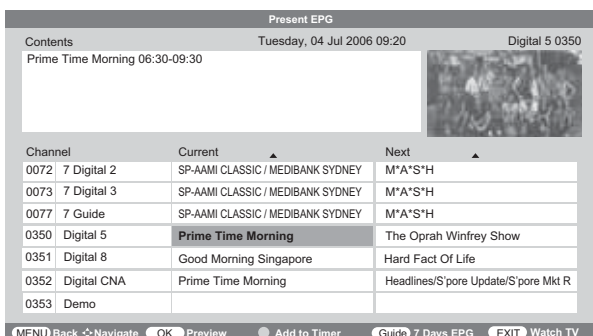
- 1 Press **MENU**, then **<** or **>** to select **PROGRAM** menu.
- 2 Press **∨** or **∧** to select **EPG** then, press **OK** to display **7 Days EPG** or **Present EPG**. Alternatively, press **GUIDE** to display EPG directly.
- 3 Press **GUIDE** button to select, **7 Days EPG** or **Present EPG**.



- 4 For **7 Days EPG**, press **∨** and **∧** to select the channel, names of the program being broadcast will appear, press **>**, then **∨** and **∧** to select a particular program.
- 5 When the extended program information is received for selected program, it will appear in the **Contents** box.
- 6 Press the Yellow and Blue button to change the day. Up to seven days from today can be selected.
- 7 Confirm the program, then press the Red button to display the **Timer Setting** menu. If you have locked channel or activating **Parental Rate**, enter the password when prompted.



- 8 Press **<** or **>** to change the Mode, then press **OK** to save.
- 9 For **Present EPG**, press **∨**, **∧**, **>** and **<** to select a program. The extended program information will be shown in the **Contents** box.



- 10 Select a program in **Current** column, then press **OK** to preview the program in the top right preview window. If the program is locked, or blocked by parental rate, you have to enter password.
- 11 When a program is selected, press the Red button to set the timer. The **Timer Setting** menu will appear. (Please refer to the description in **7 Days EPG**.)

Note:

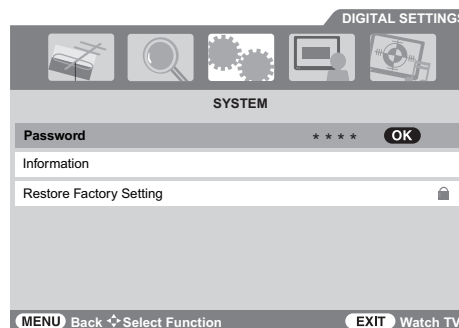
Toshiba does not provide **EPG** data; therefore Toshiba is not liable for the content of such data. The data provider may elect to discontinue the service or it may cease to be (or never be) available in your area. In any of these circumstances, the **EPG** feature will not function. Toshiba is not liable in the event that this service is unavailable or for any consequences arising from customers having used or not being able to use this service.

Password

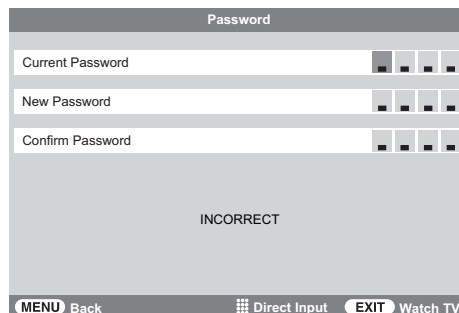
In Digital TV, channels and programs can be locked to prevent viewing of unsuitable films and programs. These can only be accessed with a password. Default password is 0000.

Setting the password

- 1 Press **MENU**, then press **<** or **>** to select the **SYSTEM** menu.
- 2 Press **∨** or **∧** to select **Password**, then press **OK**.



- 3 Use the **Number** buttons to enter 4-digit Password and enter the same 4-digit password to confirm. The **Current Password** is factory preset at **0000**.



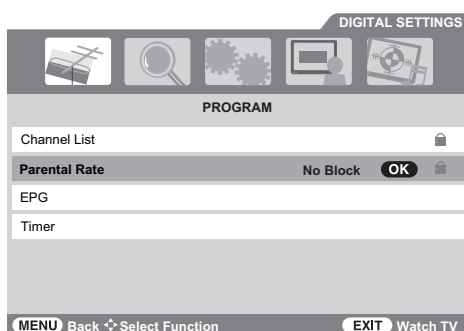
- 4 Press **MENU** to return to the **SYSTEM** menu.

Parental rate

The type of program displayed on the TV can be limited based on the parental guidance codes. See Appendix for Australian parental guide code.

Setting the parental rate

- 1 Press **MENU**, then press < or > to select the **PROGRAM** menu.
- 2 Press ∇ or \blacktriangle to select **Parental Rate**, then press **OK**.

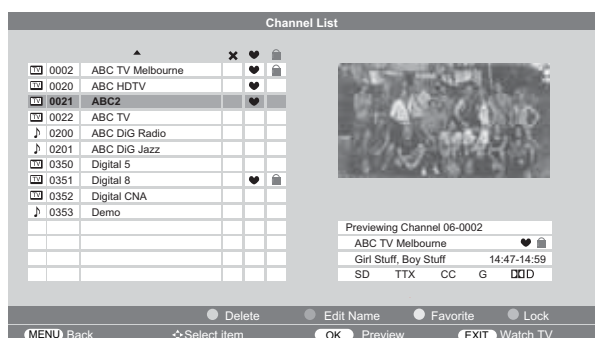


- 3 Enter password when prompted.
- 4 Press ∇ and \blacktriangle to select the suitable Rating, then press **OK** to save.

Channel list

Setting favorite, locking and deleting channels

- 1 Press **MENU**, then press < or > to select the **PROGRAM** menu.
- 2 Press ∇ or \blacktriangle to select **Channel List**, then press **OK**.
- 3 Enter password when prompted.



- 4 The current watching channel will be highlighted as the first entry and appear in the preview window.

- 5 Press ∇ and \blacktriangle to select channels, then press **OK** to preview the channel. When channel with **TV** is selected, you will see the video being displayed in the preview window. And when channel with **D** is selected, preview window displays radio-graphics, along with the detailed channel information shown below the window.

- 6 Press the Yellow button to mark the channel as favorite (\heartsuit). To reset, press the Yellow button again.

Note:

When you mark one or more channels in the **Channel List** as favorites, you can turn on **Favorite Mode** in the **PROFILE** menu.

- 7 Press the Blue button to lock (\lock) the selected channel. To reset, press the Blue button again.

Note:

When any of the locked channels is selected, the password must be entered before they can be accessed.

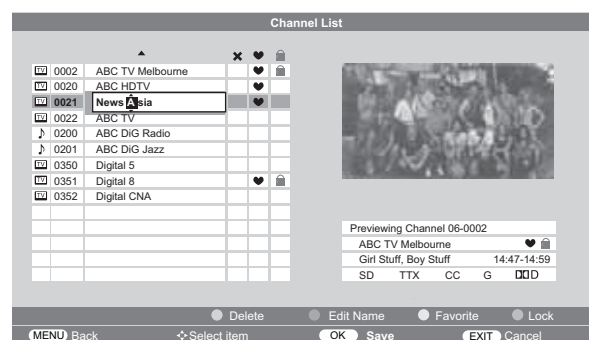
- 8 Press the Red button to mark the selected channel for deletion (\times). When the **Channel List** is closed, a message will appear to confirm the deletion, select **YES**, then press **OK**. If you select **NO**, please confirm the channels you do not wish to delete before you exit from **Channel List**.

Note:

Broadcasters may from time to time update the service information of their channels. This update may include adding new channels and new services to the existing channels. This TV will automatically respond to such update without the need for users' intervention. Any new channels from broadcaster will be added to the TV's memory automatically; and for informing users of such fresh updates, deleted channels will be restored for users' convenience.

Editing channel names

- 1 In **Channel List**, press ∇ or \blacktriangle to select channel, then press **OK** to preview the channel, then press the Green button to edit the name of the selected channel.



- 2 Use ∇ , \blacktriangle , \triangleright and \triangleleft to edit the name. Press **OK** to save or **EXIT** to cancel.

Favorite Channel List

- 1 When viewing in Digital TV, press **LIST/FW** to display the **Navigation Channel** list.
- 2 Press **LIST/FW** again to display **Favorite Channel** list.

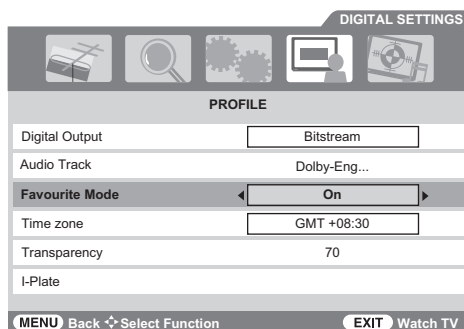


- 3 Press **▼** and **▲** to select your favorite program, then press **OK**. In favorite mode **P▲** or **P▼** will only access those favorite channels.

Favorite Mode

This function enables or disables the favorite mode. The favorite mode can only be activated if one or more channels in the Channel List are marked as favorites. Similarly, if the favorite status is removed from all the channels in the Channel List, the favorite mode is turned off automatically.

- 1 From the **PROFILE** menu, press **▼** or **▲** to select **Favorite Mode**, then press **<** or **>** to select **On** or **Off**.



Subtitle

- 1 When **I-Plate** indicates the presence of Subtitle (CC) in a channel, press **SUBTITLE** to display the current **Subtitle** status. While this status is displayed, press again to change the setting. Subtitle On or Off can be selected.
- 2 If you switch off the TV, the **Subtitle** mode will be remembered the next time it is switch ON.

Notes :

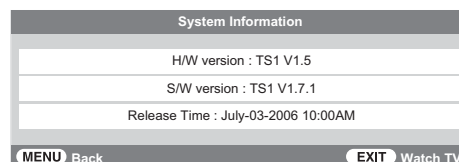
- If **Subtitle** is ON, the TV will always display subtitle whenever such information is available in the channel you are viewing. You may use **I-PLATE** to check if subtitle is currently available.
- In Australia, you may also view **Subtitle** by directly entering page 801 in Teletext. However, by doing so, the TV remains in Teletext mode and you cannot change the channels because **P▲** and **P▼** will change Teletext pages rather than channels. To view subtitle, it is recommended that you turn on Subtitle mode.

Information, restore factory setting

Information

This function can be used to check the version of hardware and software currently installed.

- 1 From the **SYSTEM** menu, press **▼** or **▲** to select **System Information**, then press **OK**.

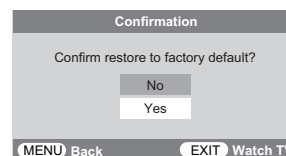


The above mentioned H/W and S/W version numbers are for illustration purpose only.

Restore factory setting

This function will delete all stored digital channels and settings. The TV will return to default factory settings.

- 1 From the **SYSTEM** menu, press **▼** or **▲** to select **System Information**, then press **OK**.
- 2 A screen will appear prompting for password. Enter your password using the **Number** buttons or press 0000 (which is the default password).
- 3 A confirmation screen will appear indicating that **Confirm restore to factory default ?**, select **Yes** and press **OK**.



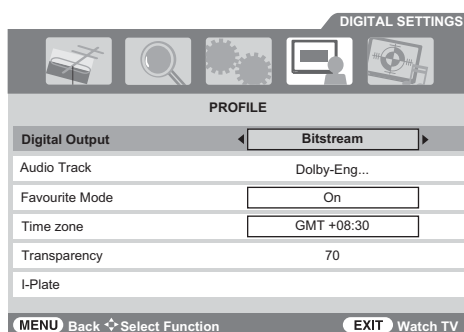
- 4 The **Welcome** screen will appear (see page 13 for the "Tuning the TV for the first time").

Digital Output, Audio Track

Digital Output

This function selects an output sound format corresponding to your audio system connection. It affects the audio format from the **Digital Audio** output terminal (see page 9).

- 1 From the **PROFILE** menu, press \downarrow or \uparrow to select **Digital Output**.
- 2 Press \leftarrow or \rightarrow to select **Bitstream** (default) or **PCM**.



Bitstream: Select this when an amplifier equipped with built-in Dolby Digital or MPEG decoder is connected to this TV.

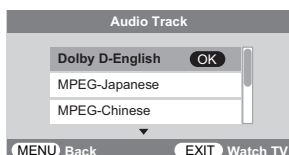
PCM: Select this when a 2ch digital stereo amplifier is connected to this TV. When you select a Dolby Digital or MPEG audio track in **Audio Track**, the sound is converted to the PCM (2ch) format and output.

Note:

Manufactured under license from Dolby Laboratories. "Dolby" and the double-D symbol are trademarks of Dolby Laboratories.

Audio Track

- 1 From the **PROFILE** menu, press \downarrow or \uparrow to select **Audio Track**, then press OK . Alternatively press AUDIO to display **Audio Track** directly.
- 2 Press \downarrow or \uparrow to select the preferred audio track present in the program being watched.

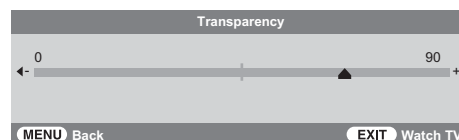


Note:

When you watch a channel containing both Dolby Digital and MPEG audio tracks, the TV will always select the Dolby Digital audio track as default. If you have selected the MPEG track and then leaves the current channel to watch another, the audio selection will be lost and reset to the default Dolby Digital selection the next time you return to watch this channel.

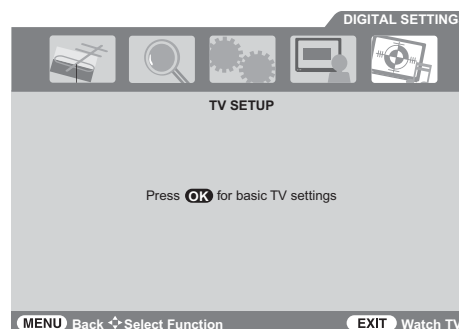
Transparency

- 1 From the **PROFILE** menu, press \downarrow or \uparrow to select **Transparency**, then press OK .
- 2 Press \leftarrow or \rightarrow to adjust the degree of On-Screen-Display transparency.



TV Setup

- 1 Press MENU , then press \leftarrow or \rightarrow to select the **TV SETUP** menu.
- 2 Press OK to close **DIGITAL SETTINGS** menu and open the **TV SETUP** menu.

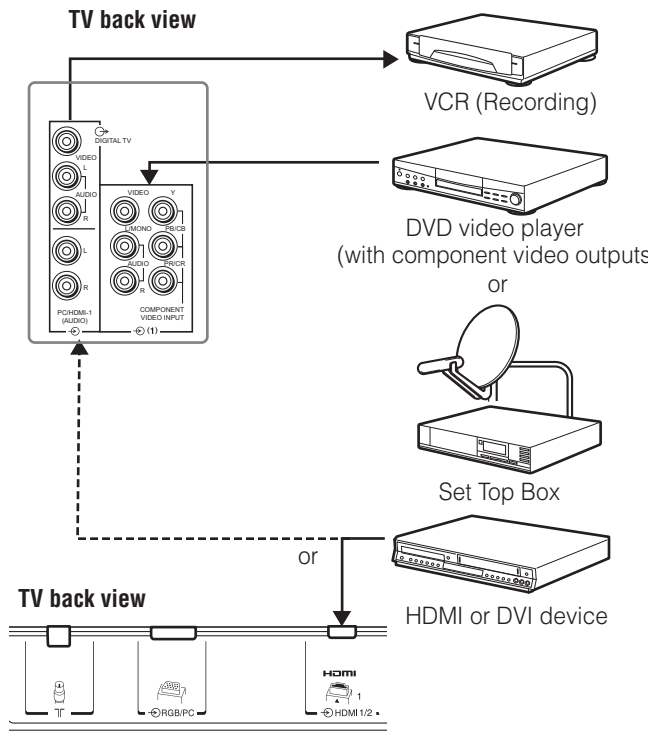


Connecting your TV

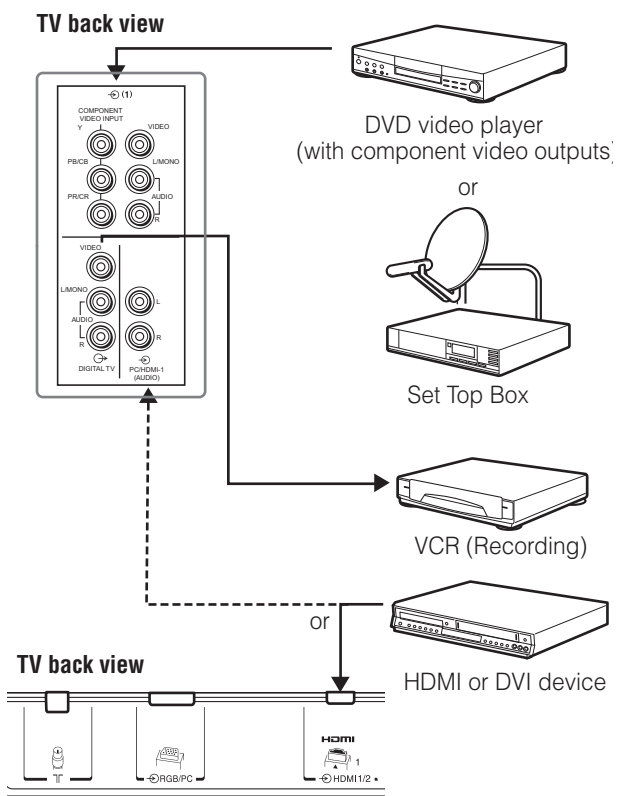
Back connections

Connection example

for 32WLT66A/37WLT66A/42WLT66A



for 47WLT66A



- Before connecting any external equipment, turn off all main power switches.
- The unauthorized recording of television programs, DVDs, video tapes and other materials may infringe upon the provisions of copyright law.
- If you connect both of the **COMPONENT VIDEO INPUT** terminal and **VIDEO** input terminal, the **COMPONENT VIDEO** signal will appear on the screen (display changes to 1C).
- The **COMPONENT VIDEO INPUT** consists of three component video signals (**Y**, **Pb/Cb**, **Pr/Cr**) and provides the best picture performance. These terminals can only be used with the component video compatible equipment e.g. DVD video player, etc.
- Additional equipment and cables shown are not supplied with this TV.
- The **DIGITAL TV** output is always in Digital TV and the **ATV/DTV** button has no effect on the output. Moreover, as display including Subtitle and Teletext will not be shown from this output to facilitate a clean video recording for the Program Timer (page 24). When the digital program is locked, the output will be blank and audio will be muted.
- If you connect mono sound equipment to **DIGITAL TV** output, connect the audio input of the equipment to the **L** or **L/MONO** jack on the TV.

Connecting an audio system - digital only -

You can enjoy high quality dynamic sound by connecting the TV to an audio system.

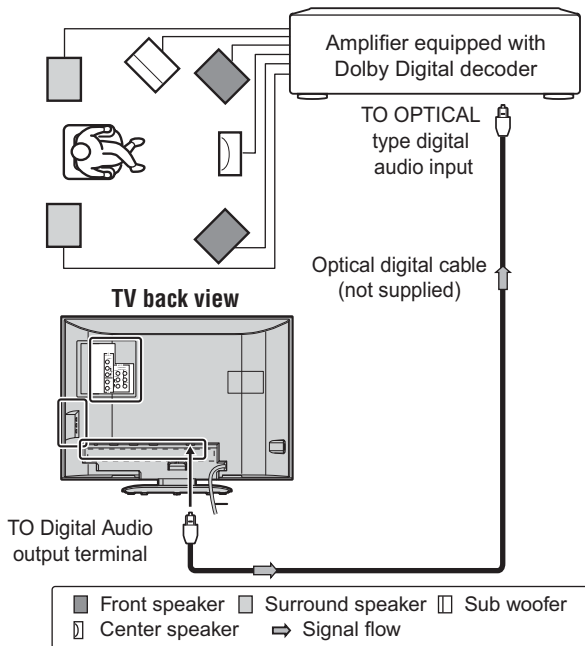
Notes:

- **DO NOT** connect the **Digital Audio** output terminal to the AC-3 RF input of a Dolby Digital Receiver with a built-in Dolby Digital decoder.
- Connect the **Digital Audio** output terminal to the **OPTICAL** input of a Receiver or Processor.
- Refer to the owner's manual of the connected equipment as well.
- When you connect the TV to other equipment, be sure to turn off the power and unplug all of the equipment from the wall outlet before making any connections.
- The output sound of the TV has a wide dynamic range. Be sure to adjust the audio amplifier's volume to a moderate listening level before turning on the power. Otherwise, the speakers and your hearing may be damaged by a sudden high volume sound.
- Turn off the amplifier before you connect or disconnect the TV's power cord. If you leave the amplifier power on, the speakers may be damaged.

Warning:

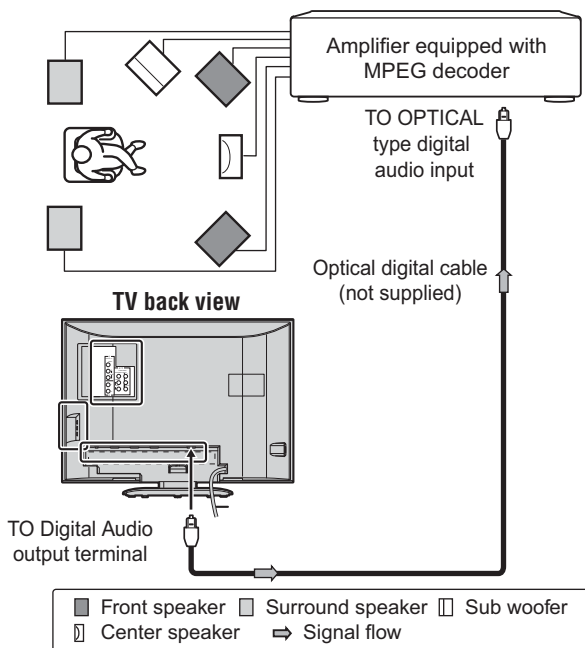
When you are connecting (via the **Digital Audio** output terminal) an AV decoder that does not have Dolby Digital or MPEG decoding function, be sure to set **PCM** in Digital Output (page 32). Otherwise, the speakers and your hearing may be damaged by a sudden high volume sound.

Connecting an amplifier equipped with a Dolby Digital decoder



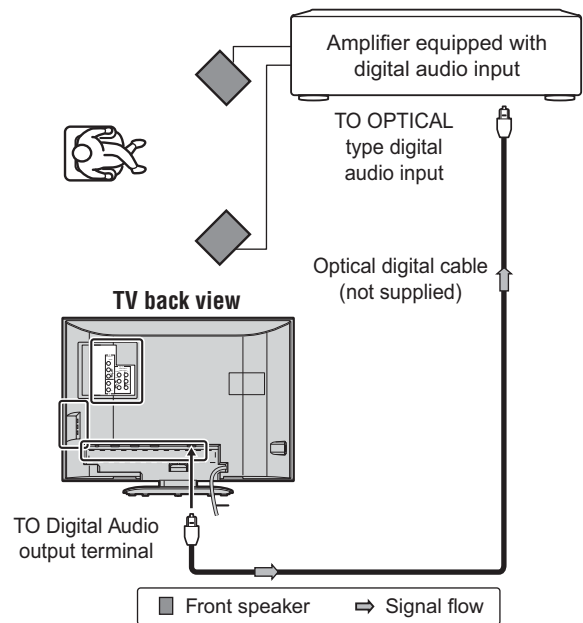
You can enjoy dynamic realistic sound by connecting the TV to an amplifier equipped with a Dolby Digital decoder or Dolby Digital processor. When using this setup, select **Bitstream** in Digital Output menu.

Connecting an amplifier equipped with an MPEG decoder



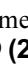
You can enjoy motion picture with dynamic realistic sound by connecting the TV to an amplifier equipped with an MPEG audio decoder or MPEG audio processor. When using this setup, select **Bitstream** in Digital Output menu.

Connecting an amplifier equipped with a digital audio (optical) input



You can enjoy dynamic sound of 2-channel digital stereo by connecting the TV to an amplifier equipped with a digital audio (optical) input and speaker system (right and left front speakers). When using this setup, select **PCM** in Digital Output menu.

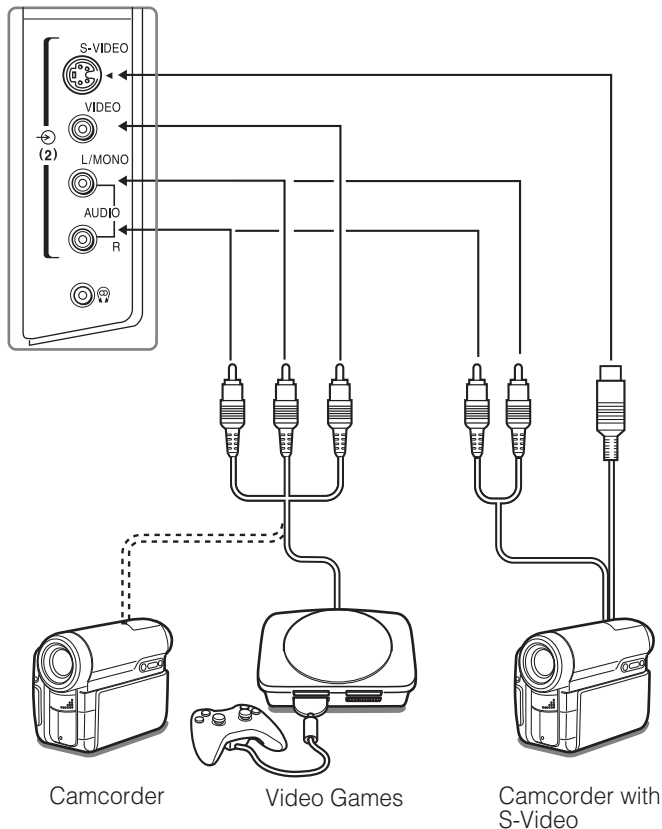
Side connections

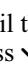


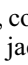
You can connect a wide variety of auxiliary equipment via the terminals located on the right side of the panel  (2).

Please always refer to the owner's manual of the equipment to be connected for full details.

Connection example

TV right side view



- To select the side inputs, press and hold  until the video input mode list appears on the screen, then press \downarrow or \uparrow to select  (2) (see page 25), then press **OK**.
- Before connecting any external equipment, turn off all main power switches.
- If you connect both of the **S-VIDEO** input terminal and **VIDEO** input terminal, the **S-VIDEO** signal will appear on the screen (display changes to .
- If you connect mono sound equipment to , connect the audio output of the equipment to the **L/MONO** jack on the TV.
- You can enjoy Video Games with this TV. However shooting games, where the player shoots at a target on the TV screen with a light gun, may not work because of the LCD Color TV properties.

Connecting an HDMI or a DVI device

- This TV is not intended for connection to and should not be used with a PC.
- When turning on your electronic components, turn on the TV first, and then the HDMI or DVI device.
- When turning off your electronic components, turn off the HDMI or DVI device first, and then the TV.
- This TV may not be compatible with features and/or specifications that may be added in the future.
- This TV is only operable with L-PCM on 32/44. 1/48 kHz and 16/20/24 bits. If there is no sound when using HDMI, use the analog audio cables to connect the TV and the HDMI device, and select **Analog** in **HDMI audio** of the **AV connection** menu (see page 36).

Connecting an HDMI or a DVI device

The HDMI input on your TV receives digital audio and uncompressed digital video from an HDMI device or uncompressed digital video from a DVI device.

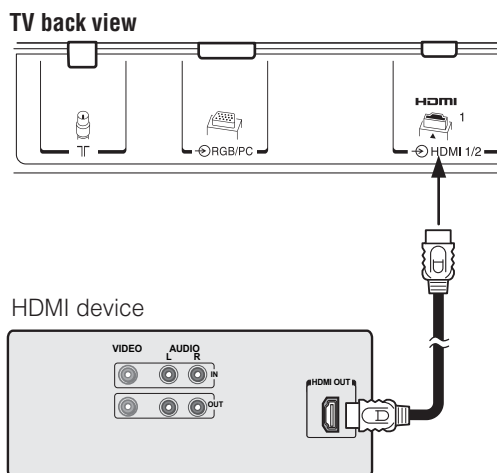
This input is designed to accept HDCP program material in digital from EIA/CEA-861/861B compliant consumer electronic devices (such as a set top box or DVD player with HDMI or DVI output).

The HDMI input is designed for best performance with 1080i (50 Hz/60 Hz) high-definition video signals, but will also accept and display 480i, 480p, 576i, 576p, 720p (50 Hz/60 Hz (60Hz: except for the E-EDID)) and VGA signals.

- **HDMI:** High-Definition Multimedia Interface
- **DVI:** Digital Video Interface
- **HDCP:** High-bandwidth Digital Content Protection
- EIA/CEA-861/861B compliance covers the transmission of uncompressed digital video with high-bandwidth digital content protection, which is being standardized for reception of high-definition video signals. Because this is an evolving technology, it is possible that some devices may not operate properly with the TV.
- **E-EDID:** Enhanced-Extended Display Identification
- **VGA:** VESA 640 × 480 @ 60 Hz
- **L-PCM:** Linear-Pulse Code Modulation

Connecting an HDMI device

One HDMI cable (type A connector)



For proper operation, it is recommended that you use a short HDMI cable.

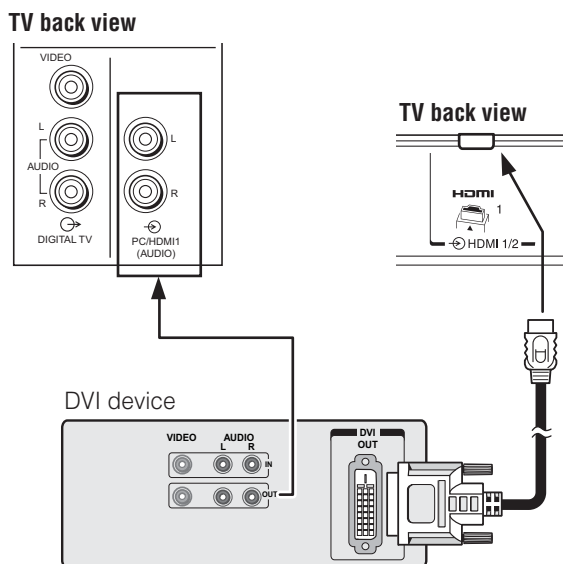
HDMI cable transfers both video and audio.

Note:

It is possible that some HDMI device may not operate properly with this TV.

Connecting a DVI device

One HDMI (type A connector)-to-DVI adapter cable and audio cables



HDMI (type A connector)-to-DVI adapter cable

For proper operation, the length of an HDMI-to-DVI adapter cable should not exceed 3m. The recommended length is 2m.

Standard analog audio cables

An HDMI-to-DVI adapter cable transfers only video. Separate analog audio cables are required.

Note:

HDMI, the HDMI logo, and High-Definition Multimedia Interface are trademarks or registered trademarks of HDMI Licensing, LLC.

Selecting the PC/HDMI1 audio mode

You can select PC audio or HDMI1 audio when using this function (page 35).

- 1 Press **MENU**, then press **<** or **>** to display the **SET UP** menu.
- 2 Press **∨** or **∧** to select **AV connection**, then press **OK** to display the **AV connection** menu.



- 3 Press **∨** or **∧** to select **PC/HDMI1 audio**, then press **<** or **>** to select **PC** or **HDMI1**.

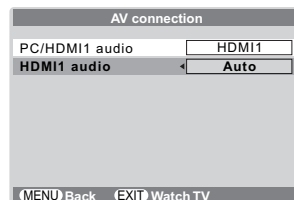
Setting the HDMI1 audio mode

You can select sound of an HDMI or DVI device connected to the HDMI1 input terminals (page 35) from three modes: **Auto**, **Digital** or **Analog**.

Note:

*This function is available only when the PC/HDMI1 audio mode is set to **HDMI1**.*

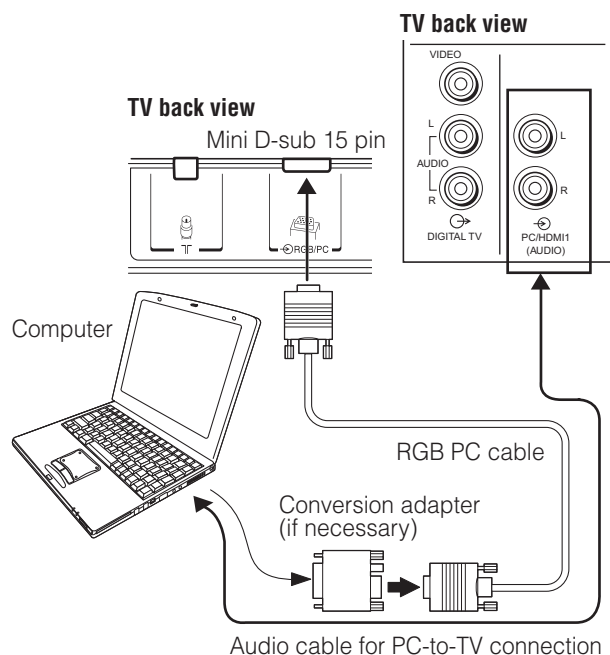
- 1 From the **AV connection** menu, press **∨** or **∧** to select **HDMI1 audio**.



- 2 Press **<** or **>** to select **Auto**, **Digital** or **Analog**.

Connecting a computer

An analog RGB (15 pin) computer cable can be connected.



Connect a PC cable from the computer to the **RGB/PC** terminal on the back of the TV.

The following signals can be displayed:

- VGA: VESA 640 × 480 @ 60 Hz
- SVGA: VESA 800 × 600 @ 60 Hz
- XGA: VESA 1024 × 768 @ 60 Hz
- S-XGA: VESA 1280 × 1024 @ 60 Hz

However, these signal formats are converted to match the number of pixels of the LCD panel.

Therefore, the TV may not display small text properly.

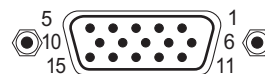
If you connect this unit to your PC, the compressed image is displayed in S-XGA mode, therefore the picture quality may deteriorate and characters may not be read.

Notes:

- Some PC models cannot be connected to this TV.
- There is no need to use an adapter for computers with DOS/V compatible mini D-sub 15 pin terminal.
- A bar may appear in the upper, lower, right or left side of the screen, or parts of the picture may be obscured depending on some signals. This is not the malfunction.
- If the edges of the picture are stretched, readjust the picture position adjustments in the **PC Setting** menu.
- Depending on the specification of the PC you are playing the DVD-Video on, and the DVD's title, some scenes may be skipped, or you may not be able to pause during multi-angle scenes.

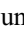
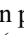
Signal names for mini D-sub 15 pin connector

Pin assignment for RGB/PC terminal




Pin No.	Signal name	Pin No.	Signal name
1	R	9	NC
2	G	10	Ground
3	B	11	NC
4	NC (not connected)	12	NC
5	NC	13	H-sync
6	Ground	14	V-sync
7	Ground	15	NC
8	Ground		

Using the PC setting

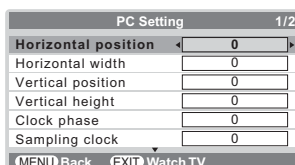
- In the PC input mode, you cannot select the **3D color management** and **Base color management** in the **PICTURE** menu and the **Color, Tint, Sharpness, Black stretch, MPEG NR** and **DNR** in the **Picture setting** menu and **Cinema mode** (see page 21).
- In the PC input mode, the **Manual setting** (see page 25) is not displayed.
- First press and hold  until the video input mode list appears on the screen, then press \downarrow or \uparrow and  in order to select the PC input mode (see page 25).
- This function may not be available for some signal or if no signal is received.
- The optimum points of the clock phase and sampling clock adjustments may be incomprehensible according to the input signals.

Adjusting the picture size/position

- 1 Press , then press \leftarrow or \rightarrow to display the **SET UP** menu.
- 2 Press \downarrow or \uparrow to select **PC Setting**.



- 3 Press  to display the **PC Setting** menu.



- 4 Press \downarrow or \uparrow to select an option you want to adjust. Press \leftarrow or \rightarrow to adjust the settings as required.



Adjusting the clock phase of the picture

If the clock phase, which synchronizes the PC signal and LCD display, is not optimized, the picture will blur.

This function enables you to adjust clock phase and display a clear picture.

- 1 From the **PC Setting** menu, press \downarrow or \uparrow to select **Clock phase**.
- 2 Press \leftarrow or \rightarrow to obtain a clear picture.



Adjusting the sampling clock

If the sampling clock does not match with the dot clock frequency of the PC, blurred picture detail will occur, or screen width will change, or drift patterns in vertical lines may be apparent.

This function enables you to adjust it and optimize the picture.

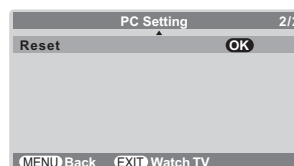
- 1 From the **PC Setting** menu, press \downarrow or \uparrow to select **Sampling clock**.
- 2 Press \leftarrow or \rightarrow to optimize the picture.



Resetting the PC setting

The Reset function adjusts the PC Setting to the factory settings.

- 1 From the **PC Setting** menu, press \downarrow or \uparrow to select **Reset** on the 2nd page.





- 2 Press .

Troubleshooting

Before calling a service technician, please check the following table for a possible cause of the symptom and some solutions.

Symptom and solution

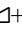


TV will not turn on

- Make sure the power cord is plugged in, then press  and .
- The remote control batteries may be dead. Replace the batteries.

No picture, no sound

- Check the antenna connections.

No sound, picture OK

- The sound may be muted. Press ,  or .
- The station may have broadcast difficulties. Try another channel.

Poor sound, picture OK

- The station may have broadcast difficulties. Try another channel.

Poor picture, sound OK

- Check the antenna connections.
- The station may have broadcast difficulties. Try another channel.
- Adjust the **PICTURE** menu.

Poor reception of broadcast channels

- Check the antenna connections.
- The station may have broadcast difficulties. Try another channel.
- Make sure the Color system is properly set.

Teletext problems

- Check the antenna connections.
Good performance of text depends on a good strong broadcast signal.

Multiple images

- The station may have broadcast difficulties. Try another channel.
- Antenna reception may be poor. Use a high directional outdoor antenna.
- Check if the direction of the antenna has changed.

Poor color or no color

- The station may have broadcast difficulties. Try another channel.
- Adjust the **Tint** and/or **Color** in the **PICTURE** menu.

The remote control does not operate

- Remove all obstructions between the remote control and the remote control sensor on the TV.
- The remote control batteries may be dead. Replace them with new ones.

Some pixels of the screen do not light up

- The LCD display panel is manufactured using an extremely high level of precision technology, however, sometimes some pixels of the screen may be missing picture elements or have luminous spots. This is not a sign of a malfunction.

The brightness of the screen comes down, or flickers of the screen are caused, or some parts of the screen do not light up.

- When you just buy and start to use this TV, a flickering may be caused in the screen. In this case, switch off the TV, then switch on it again to cure the condition.
- The cold cathode fluorescent lamp used for the back light on this TV has longevity. When the brightness of the screen comes down, or the flickers of the screen are caused, or some parts of the screen do not light up, it may reach the end of its life. Contact a service technician.

The picture brightness varies when you switch the TV on.

- If you switch the TV on at 0°C and under, wait until the warms up.

Symptom and solution - digital only -




Poor picture

- Check the antenna connections. Make sure it is aligned to the correct broadcast direction.
- Check the signal level and quality in the **Manual Scan** menu.
- If you use any kind of amplifier to boost the signal level, check whether it works well, and ask for help from the antenna installer.

No picture

- Use the **Manual Scan** menu to rescan this channel.
- Try another channel.
- Reduce **RF** amplifier gain if connected to **RF** booster.

No sound from DIGITAL AUDIO

- The sound may be muted. Press ,  or .
- Make sure the TV is adjusted to the correct **Audio Track**.
- Use the **Manual Scan** menu to rescan this channel.
- Try another channel.

Not all channels are available after using the Auto Scan when tuning the TV for the first time.

- This symptom is caused by unexpected frequency offset.
- The **Manual Scan** menu to scan for the missing channels. The TV scan receive these channels by the **Auto Scan** menu most of the time, but we suggest that you use the **Manual Scan** menu when tuning the TV for the first time. Once the TV picks up the signal, all the transmission parameters will be stored in the internal memory.

Cannot lock signal by using Manual Scan

- Check the frequency that you have entered is exactly the Middle frequency of the wanted channel.
- Refer to the solutions for "Poor picture".

No Teletext, no Subtitle

- Make sure the channel that you are watching carries Teletext/Subtitle information from **I-PLATE**.

Cannot receive channels after moving the TV between cities (e.g. from Melbourne to Sydney)

- Refer to page 13 to reset data.

Weak signal appears on one channel but not the other, but these channels have the same logical number

- Please make sure that you do not keep duplicate channels (i.e. channels with the same logical channel number but different physical numbers, see page 13). If you do, please delete the duplicate ones and keep only one channel with the best signal strength.

APPENDIX

AUSTRALIAN PARENTAL GUIDANCE CODES (Normative)

Recommended On-Screen-Display for parental guidance codes transmitted within DVB-SI EIT information using the DVB parental_rating_descriptor.

			Receiver Menu Set-up and Suggested OSD wording for Setting Blocking (Restriction of access)							
			Block All	Block G and above (optional)	Block PG and above	Block M and above	Block MA and above	Block AV and above	Block R and above	No Block
Transmitted rating hex code	Australian parental guide code	On-Screen-Display	Resultant receiver action to received hex code ✓ is show program - ✗ is block until PIN entered							
0 × 00	Not Classified	–	✗	✓	✓	✓	✓	✓	✓	✓
0 × 01		–	✗	✓	✓	✓	✓	✓	✓	✓
0 × 02	P Pre school	P	✗	✓	✓	✓	✓	✓	✓	✓
0 × 03		P	✗	✓	✓	✓	✓	✓	✓	✓
0 × 04	C Children's	C	✗	✓	✓	✓	✓	✓	✓	✓
0 × 05		C	✗	✓	✓	✓	✓	✓	✓	✓
0 × 06	G General	G	✗	✗	✓	✓	✓	✓	✓	✓
0 × 07		G	✗	✗	✓	✓	✓	✓	✓	✓
0 × 08	PG Parental Guidance Recommended	PG	✗	✗	✗	✓	✓	✓	✓	✓
0 × 09		PG	✗	✗	✗	✓	✓	✓	✓	✓
0 × 0A	M Mature Audience 15+	M	✗	✗	✗	✗	✓	✓	✓	✓
0 × 0B		M	✗	✗	✗	✗	✓	✓	✓	✓
0 × 0C	MA Mature Adult Audience 15+	MA	✗	✗	✗	✗	✗	✓	✓	✓
0 × 0D		MA	✗	✗	✗	✗	✗	✓	✓	✓
0 × 0E	AV Adult Audience, Strong violence 15+	AV	✗	✗	✗	✗	✗	✗	✓	✓
0 × 0F	R Restricted 18+	R	✗	✗	✗	✗	✗	✗	✗	✓

Broadcast system

Broadcast transmission systems of each country or region

Asia M.E.

Country or region	Color	Sound
Bahrain, Kuwait, Israel, Oman, Qatar, United Arab Emirates, Yemen, etc. Indonesia, Malaysia, Singapore, Thailand, etc.	PAL	B/G
China	PAL	D/K
China Hong Kong	PAL	I
Iraq, Islamic Republic of Iran, Lebanon, Saudi Arabia, etc.	SECAM	B/G
Russian Federation, etc.	SECAM	D/K
Myanmar, etc.	NTSC	M

Oceania

Country or region	Color	Sound
Australia, New Zealand, etc.	PAL	B/G

Africa

Country or region	Color	Sound
Republic of South Africa, etc.	PAL	I

South America

Country or region	Color	Sound
Argentina, Paraguay, Uruguay, etc.	PAL	N
Brazil	PAL	M
Chile, Colombia, etc.	NTSC	M

Note:

PAL, SECAM and NTSC 3.58 (MHz) are different color signal broadcast transmission systems applicable to different countries or region. NTSC 4.43 (MHz) is used in special VCRs to playback NTSC recorded video tapes through PAL television equipment.

Specifications

Integrated Digital LCD TV

Model

32WLT66A, 37WLT66A, 42WLT66A, 47WLT66A

Power source

220 V-240 V AC, 50 Hz

Power consumption

32WLT66A: 168 W, 0.9 W (standby)
 37WLT66A: 174 W, 0.9 W (standby)
 42WLT66A: 265 W, 0.6 W (standby)
 47WLT66A: 310 W, 0.6 W (standby)

Dimensions

32WLT66A: 794 mm (W) 630 mm (H) 300 mm (D)
 37WLT66A: 916 mm (W) 688 mm (H) 300 mm (D)
 42WLT66A: 1,044 mm (W) 775 mm (H) 353 mm (D)
 47WLT66A: 1,134 mm (W) 795 mm (H) 353 mm (D)

Mass (Weight)

32WLT66A: 19.2 kg, 37WLT66A: 25.9 kg,
 42WLT66A: 32.9 kg, 47WLT66A: 45.6 kg

Analog TV system (Antenna input)

Channel coverage:

PAL	B/G	(CCIR)	VHF	2 - 12
			UHF	21 - 69
			CATV	X - Z+2, S1 - S41
PAL	I	(UK)	VHF	-
			UHF	21 - 69
			CATV	-
PAL	D/K	(CHINA)	VHF	1 - 12
			UHF	13 - 57
			CATV	Z1 - Z38
SECAM	B/G	(CCIR)	VHF	2 - 12
			UHF	21 - 69
			CATV	X - Z+2, S1 - S41
SECAM	D/K	(OIRT)	VHF	1 - 12
			UHF	21 - 69
			CATV	X1 - X19
NTSC	M	(US)	VHF	2 - 13
			UHF	14 - 69
			CATV	A6 - A1, A - W, AA - ZZ, AAA, BBB
NTSC	M	(JAPAN)	VHF	1 - 12
			UHF	13 - 62
			CATV	M1 - M10, S1 - S41

Digital TV System

Compliant Standard	DVB-T
Video Decoding	MP @ ML & MP @ HL
Audio Decoding	Dolby® Digital, MPEG (I & II)
Audio Sampling Rate	32, 44.1, 48 kHz

Digital TV Terrestrial Tuner / Demodulator

Frequency	51~858 MHz
Loop Through	51~858 MHz
Bandwidth	6, 7, 8 MHz
Demodulator	COFDM
FFT Mode	2K, 8K
Constellation	QPSK, 16QAM, 64 QAM
Guard Interval	1/4, 1/8, 1/16, 1/32
Inner Coding Rate	1/2, 2/3, 3/4, 5/6, 7/8

Special RF signal:

NTSC 4.43 color system 5.5/6.0/6.5 MHz sound system
 PAL 60 Hz color system 5.5/6.0/6.5 MHz sound system

COMPONENT VIDEO INPUT terminals (the signal format)

480i, 480p, 576i, 576p, 720p (50/60 Hz), 1080i (50/60 Hz)
 (These signal formats are converted to match the number of pixels of the LCD panel.)

Color system (analog TV system)

PAL, SECAM, NTSC 3.58/4.43

Aspect ratio

16 : 9

Visible size (diagonal)

32WLT66A: 80.0 cm, 37WLT66A: 94.0 cm
42WLT66A: 106.7 cm, 47WLT66A: 119.6 cm

Number of pixels

32WLT66A, 37WLT66A, 42WLT66A:
1,366 (H) dots × 768 (V) dots
47WLT66A: 1,920 (H) dots × 1,080 (V) dots

Audio power

10 W + 10 W (10 % THD)

Speakers

32WLT66A, 37WLT66A, 42WLT66A:
Main 60 × 120 mm 2 pcs.
47WLT66A:
Main 60 × 120 mm 4 pcs.
Tweeter 33 mm (round) 2 pcs.

Input/Output terminals

⊖ (1)	Input	
	Component video	Y, P _B /C _B , P _R /C _R
	Phono jacks	A/V
⊖ (2)	Input	
	4 pin	S-video
	Phono jacks	A/V
⊕ DIGITAL TV	Output	
	Phono jacks	A/V
⊖ RGB/PC	Input	
	Mini D-sub 15 pin	Analog RGB
⊖ PC/HDMI1 (AUDIO)	Input	
	Phono jacks	Audio L+R
⊖ HDMI1	Input(type A)	
	19 pin	A/V Digital
⊖ HDMI2	Input(type A)	
	19 pin	A/V Digital
⊕ Digital Audio (optical)	Output	
	Bitstream/PCM	
Headphone jack	3.5 mm (Diameter) stereo	

Operating condition

Temperature 0 °C - 35 °C
Humidity 20 % - 80 % (No moisture condensation)

Supplied accessories

Owner's manual (1), Remote control (1), Batteries (2),
Clip (1)



This is used to fix the TV to a wall, pillar, etc. (☞ page 4).

- Design and specifications are subject to change without notice.
- Never service or remodel the TV by yourself. It may expose you to a fire hazard or dangerous voltages.

TOSHIBA CORPORATION