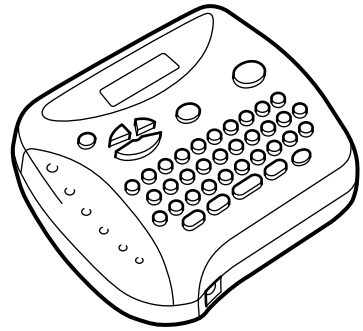


STANLEY

HeavyDutyLabeler™

MODEL ST-1150/ 1150DX USER'S GUIDE



LA3255001
Printed in China

Patent numbers and patent publication numbers which are related to this product are as below:
USP4839472 USP4983058 USP5120147
USP4927278 USP5009530
USP4976558 USP5069557

FCC NOTICE

This equipment has been tested and found to comply with the limits for a Class B digital device, pursuant to Part 15 of the FCC Rules. These limits are designed to provide reasonable protection against harmful interference in a residential installation. This equipment generates, uses, and can radiate radio frequency energy and, if not installed and used in accordance with the instructions, may cause harmful interference to radio communications. However, there is no guarantee that interference will not occur in a particular installation. If this equipment does cause harmful interference to radio or television reception, which can be determined by turning the equipment off and on, the user is encouraged to try to correct the interference by one or more of the following measures:

- Reorient or relocate the receiving antenna.
- Increase the separation between the equipment and receiver.
- Connect the equipment to an outlet on a circuit different from that to which the receiver is connected.
- Consult the dealer or an experienced radio/TV technician for help.

Changes or modifications not expressly approved by Brother Industries, Ltd. could void the user's authority to operate the equipment.

With your new ST-1150/1150DX, you can create labels for any application. Select from the many frames, character sizes and styles to design beautiful custom labels. In addition, the variety of tape cartridges available allows you to print labels with different widths and exciting colors. No, you no longer have to worry about urgent tasks that require professional printing. The quality and performance of the ST-1150/1150DX make it an extremely practical machine. Although this machine is easy to use, we suggest that you read this manual carefully before starting and keep the manual in a handy place for future reference.

GENERAL PRECAUTIONS

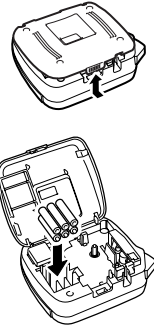
- Use only Stanley STZ or Brother TZ tapes with this machine. Do not use any other tapes.
- Tapes are available in three different widths: 1/4" (6 mm), 3/8" (9 mm) and 1/2" (12 mm).
- Do not pull the tape since this may damage the tape cassette.
- Do not attempt to cut the tape while printing or feeding since this will damage the tape.
- Do not clean the machine with alcohol or other organic solvents. Use only a soft, dry cloth.
- Remove the batteries and disconnect the AC adapter if you do not intend to use the machine for an extended period of time.
Note: If power is disconnected for more than three minutes, all text shown in the display and any text files stored in the memory will be lost.
- Do not put any foreign objects into or anything on the machine.
- Do not expose the machine to high temperatures or high humidity. Never leave it on the dashboard or in the back of your car.
- Do not use the machine in dusty places, and keep it out of both direct sunlight and rain.
- Do not leave any rubber or vinyl on the machine for an extended period of time. Doing so may cause staining.
- After inserting a new tape cassette, advance the tape by holding down **Code** and pressing **Print** once.
- Do not touch the print head mechanism. If the head is touched, clean it immediately with a soft wipe (e.g., a cotton swab) to avoid permanent damage.
- To avoid injuries, do not touch the cutter's edge.
- **Use only the AC adapter designed exclusively for this machine. Use of any other adapter will void the warranty. Please contact a Brother dealer for details.**

POWER SUPPLY

Batteries

Since this machine is compact and portable, it can be used anywhere by installing six AAA alkaline batteries (LR03). When changing the batteries, always replace all six at the same time.

- 1 Press in on the rough area at the top end of the machine and fold open the back cover.
- 2 If batteries are already installed, remove the tape cassette (if one is installed) by pulling it straight out, and then remove the batteries.
- 3 Insert the batteries into the battery compartment with the positive end of the bottom three batteries pointing toward the top end of the machine, and the positive end of the top three batteries pointing in the opposite direction.
Note: When replacing the batteries, insert the new ones within three minutes of removing the old ones, otherwise all text shown in the display and any text files stored in the memory will be lost (unless the machine is plugged into an outlet with the AC adapter).

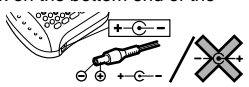


- 4 Securely close the back cover, making sure that it snaps into place.

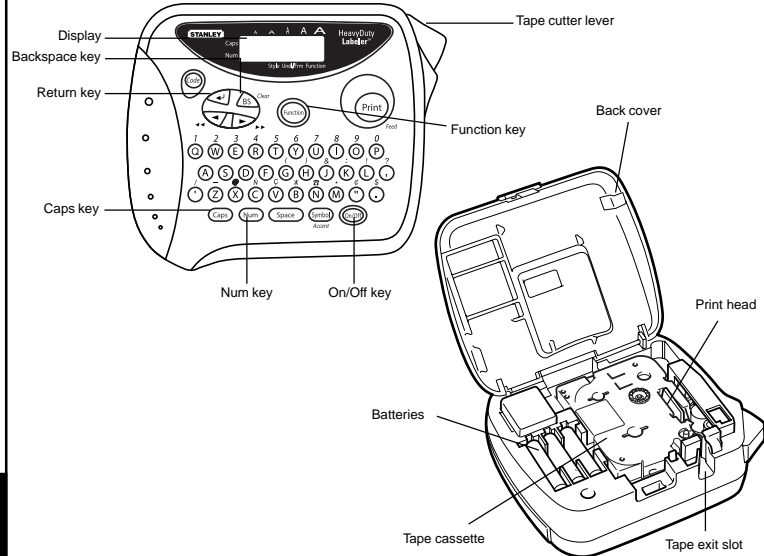
Optional AC adapter

The AC adapter allows you to use this machine wherever an electrical outlet is available. Use Brother's AD-30 adapter for your new ST-1150/1150DX.

- 1 Insert the plug on the adapter cord into the adapter jack on the bottom end of the machine.
- 2 Insert the plug into the nearest standard electrical outlet.



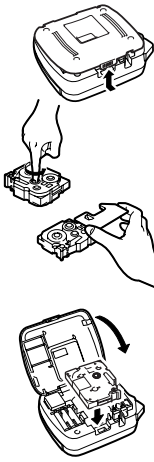
OVERVIEW



TAPE CASSETTES

A tape cassette is supplied with this unit. Stanley STZ or Brother TZ tapes used with this machine are available in a variety of colors and three tape widths (1/4" (6 mm), 3/8" (9 mm) and 1/2" (12 mm)).

- 1 Press in on the rough area at the top end of the machine and fold open the back cover.
- 2 If a tape cassette is already installed, remove it by pulling it straight up.
- 3 If the ink ribbon in the other tape cassette is loose, use your finger to wind the toothed wheel in the direction of the arrow on the cassette until there is no slack in the ribbon. Also, make sure that the end of the tape feeds under the tape guides.
Note: If you are using a new tape cassette provided with a stopper, be sure to remove the stopper.
- 4 Insert the tape cassette firmly into the compartment, making sure that the entire back of the cassette contacts the bottom of the compartment.
Note: When inserting a tape cassette, make sure that the inner ribbon does not catch on the corner of the metal guide.
- 5 Securely close the back cover, making sure that it snaps into place.
- 6 Feed the tape by holding down **Code** and pressing **Print** once, and then push in the tape cutter lever to cut the tape.



STARTING

Press **On/Off**. If batteries have been installed or the machine has been plugged in using the optional AC adapter, the previous session's information is displayed when the machine is turned on. This feature allows you to stop work on a label and turn off the machine, then return to it later without having to re-enter the text.

The machine automatically turns off if no key is pressed within five minutes. The current session's information is stored in the machine's internal memory and displayed when the machine is later turned on again.

CODE KEY

By holding down **Code** and pressing a key with a function, character or accent written above it, you can use the corresponding function or add the corresponding character to your text.

CAPS KEY

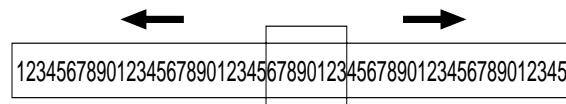
By pressing **Caps** to enter **Caps** mode, you can add upper-case letters to your text by simply pressing the character keys. When this mode is on, the **Caps** indicator in the top-left corner of the display comes on. To exit **Caps** mode, press **Caps** until the **Caps** indicator goes off.

NUM KEY

By pressing **Num** to enter **Num** mode, you can add numbers to your text by simply pressing the corresponding keys. When this mode is on, the **Num** indicator in the bottom-left corner of the display comes on. To exit **Num** mode, press **Num** until the **Num** indicator goes off.

DISPLAY

This machine's LCD shows one row of 8 characters; however, the text that you enter can be up to 55 characters in length. The 8-character display is like a window which moves across the text.



CURSOR MOVEMENT

You can view and edit different parts of the text by moving the cursor backward and forward.

- To move the cursor one character at a time, press **Left Arrow** or **Right Arrow**.
- To move the cursor to the beginning of the text, hold down **Code** and press **Left Arrow**.
- To move the cursor to the end of the text, hold down **Code** and press **Right Arrow**.

BACKSPACE KEY

This key can be used to remove characters from your text, clear all of the text or cancel the current function and return to the text input mode.

- To delete the character to the left of the cursor or to cancel a function, press **BS**.
- To clear all of the text that is currently entered, hold down **Code** and press **BS**.

SPACE KEY

As on a word processor, press **Space** to add a blank space to your text.

RETURN KEY

Press **Return** when you wish to accept or confirm a setting, or end the first line of text and start the second.

- To add a second line, press **Return** once. The return mark (↵) appears in the text to indicate the end of the first line and the beginning of the second.
Note: Two lines of text can only be entered if 3/8" (9-mm)- or 1/2" (12-mm)-wide tape is installed.
- To accept or confirm a setting from a list, press **Return** once.

ACCENTED CHARACTERS

You can also choose from a list of other accented characters that can be added to your text.

Letter	Accented character	Letter	Accented character
A	À Á Â Ã Ä Å Æ	a	à á â ã ä å æ
C	Ç	c	ç
E	É Ê Ë Ì Í Î Ï	e	é ê ë ì í î ï
I	Í Î Ï	i	í î ï
N	Ñ	n	ñ
O	Ó Ô Õ Ö	o	ó ô õ ö
U	Ú Û Ü	u	ú û ü

- 1 Press **Caps** if you want the accented character to be an upper case letter.
Note: To quit the following procedure at any time without making any changes, press **BS**.
- 2 Hold down **Code** and press **Symbol**. The message "A-U?" appears in the display.
- 3 Press the key for the letter in the accented character that you wish to add, and then press **Left Arrow** and **Right Arrow** until the cursor is positioned under the desired accented character.
- 4 Press **Return** to add the selected character to your text.

SYMBOLS

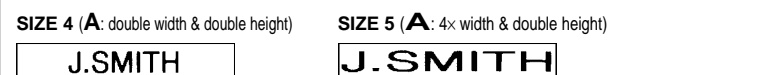
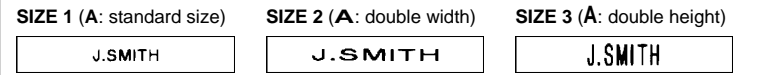
In addition to the letters, symbols, and numerals on and above the keys, there are 72 symbols available with the **Symbol** function. These symbols are divided into 9 groups, corresponding to the letters A through I.

Group	Symbols
A	Ú ù Ç ç Æ æ á é
B	í ó ô Ñ ñ ★ Ā ā Ę ę
C	Ö ö Ñ ñ Ì ì Ł ł \$ #
D	· ° ; % + × ÷ =
E	\$ € [] ^ _ ` 2 3 4
F	TM ® © ☎ ☏ ☒ ☓
G	☎ ☏ ☒ ☓ ☑ ☒ ☓ ☑ ☒ ☓
H	☎ ☏ ☒ ☓ ☑ ☒ ☓ ☑ ☒ ☓
I	↑ ↓ → ← Ⓔ Ⓕ Ⓖ Ⓗ

- 1 Press **Symbol**. The message "A-I?" appears in the display.
- 2 Press the key for the letter of the group containing the symbol that you wish to add, and then press **Left Arrow** and **Right Arrow** until the cursor is positioned under the desired symbol.
- 3 Press **Return** to add the symbol to the text.

SIZE

The characters in the text can be set to one of five different sizes in addition to **AUTO**, which automatically adjusts the characters to the largest possible size according to the width of the installed tape. The currently selected size setting is shown by the indicators at the top of the display. All of the size indicators light up when the **AUTO** setting is selected.



- Note:**
- If there are two lines of text, they are printed with the **SIZE1** setting applied, regardless of the selected size setting.
 - To quit the following procedure at any time without making any changes, press **BS**.
- 1 Press **Function**.
 - 2 Press **Left Arrow** and **Right Arrow** until **SIZE** is displayed, and then press **Function** (or **Return**). The current size setting appears in the display.
 - 3 Press **Left Arrow** and **Right Arrow** until the desired size setting is displayed.
 - 4 Press **Function** (or **Return**) to apply the selected size setting to the text.

INTRODUCTION

STYLE

You can also use one of nine different print styles for the characters in your label. If a setting other than **NORMAL** is selected, the **Style** indicator at the bottom of the display lights up.

NORMAL

J.SMITH

OUTLINE

J.SMITH

BOLD

J.SMITH

SHADOW

J.SMITH

ITALIC

J.SMITH

I+OUTL (italic + outline)

J.SMITH

I+BOLD (italic + bold)

J.SMITH

I+SHADOW (italic + shadow)

J.SMITH

VERTICAL

ㄈ · ㄊ Σ - ㄱ ㅁ ㅂ

Note:

- If there are two lines of text, they are printed in the **NORMAL** style, regardless of the selected style setting.
- To quit the following procedure at any time without making any changes, press .

- Press .
- Press and until **STYLE** is displayed, and then press (or). The current style setting appears in the display.
- Press and until the desired style setting is displayed.
- Press (or) to apply the selected style setting to the text.

UNDERLINE/FRAME

This option allows you to emphasize or decorate your entire text by framing or underlining it. If any setting other than **OFF** is selected, the **Undl/Frm** indicator at the bottom of the display lights up.

OFF (no underline or frame)

ABC

ROUND

ABC

WOODEN

ABC

POINTING

ABC

CANDY

ABC

UNDL (underline)

ABC

Note:

- The underline or frame is not printed if the **VERTICAL** style setting is used.
- To quit the following procedure at any time without making any changes, press .

- Press .
- Press and until **UNDL/FRM** is displayed, and then press (or). The current underline/frame setting appears in the display.
- Press and until the desired underline/frame setting is displayed.
- Press (or) to apply the selected underline/frame setting to the text.

MIRROR PRINTING

This function prints your label so that the text can be read from the adhesive side of the tape. If mirror-printed labels are attached to glass or some other transparent material, the tape can be read correctly from the opposite side.

Note:

- With this function, the text must be printed on transparent tape.
- To quit the following procedure at any time without making any changes, press .

- Press .
- Press and until **MIRROR** is displayed, and then press (or). The current mirror printing setting appears in the display.
- Press and until the desired mirror printing setting is displayed.
- Press (or) to apply the selected mirror printing setting to the text.

TAPE MARGIN

This function can be used to leave equal margins of 1/6" (4 mm (#)), 1/2" (12 mm (##)) or 1" (24 mm (###)) on both sides of the text. Using the “–” tape margin setting, multiple formats can be printed, one after the other without feeding the tape, onto a single label.

Note: To quit the following procedure at any time without making any changes, press .

- Press .
- Press and until **MARGIN** is displayed, and then press (or). The current tape margin setting appears in the display.
- Press and until the desired tape margin setting is displayed.
- Press (or) to apply the selected tape margin setting to the text.

Note:

- After printing with the “–” tape margin setting, hold down and press once to feed the tape before pushing in the tape cutter lever to cut it, otherwise some of the printed characters may be cut off.
- After printing with the **#** or **##** tape margin setting, push in the tape cutter lever to cut off the label, and then use scissors to cut along the printed dots (·) and center the text within the label.

PRINTING & CUTTING

After you have entered the text and chosen the desired format settings, you are ready to print the label.

- To print the label, press . The message “PRINT” is displayed while the label is being printed, and the label comes out of the tape exit slot at the top end of the machine.
- To feed out 1 1/24" (25 mm) of tape (for example, after printing using the “–” tape margin setting), hold down and press once. The message “FEED” is displayed while the tape is fed out.
- To cut off the label, push in the tape cutter lever in the top-right corner of the machine.
 - Note:**
 - In order to prevent damage to the tape, do not try to cut it while the messages “PRINT” or “FEED” are displayed.
 - After printing with the **#** or **##** tape margin setting, push in the tape cutter lever to cut off the label, and then use scissors to cut along the printed dots (·) and center the text within the label.

REPEAT PRINTING

This function allows you to print up to nine copies of the same label.

Note: To quit the following procedure at any time without making any changes, press .

- Press .
- Press and until **REPEAT** is displayed, and then press (or). The message “1-9?” appears in the display.
- Press and until the number of labels that you want to print appears on the right side of the display.
 - OR**
 - Press the key (1-9) corresponding to the number of labels that you want to print.

- Press (or or) to print the labels.

Note:

- After printing with the “–” tape margin setting, hold down and press once to feed the tape before pushing in the tape cutter lever to cut it.
- After printing with the **#**, **##** or **###** tape margin setting, push in the tape cutter lever to cut off the tape, and then use scissors to cut along the printed dots (·) and separate the labels.

NUMBERING

This function can be used to print many copies of the same text while increasing a selected number by 1 after each label is printed, for example, when printing labels containing a serial number (for example, 0123, 0124, and 0125).

Note: To quit the following procedure at any time without making any changes, press .

- Position the cursor below the number that you wish to increase.
 - Press .
 - Press and until **NUMBER** is displayed, and then press (or). The message “1-9?” appears in the display.
 - Press and until the last number that you want to print appears on the right side of the display.
 - OR**
 - Press the key (1-9) corresponding to the last number that you want to print.
- Note:** The last number that will be printed must be larger than the number selected in the text, otherwise the message “ERROR” will appear when you try to print.
- Press (or or) to print the labels.

- After printing with the “–” tape margin setting, hold down and press once to feed the tape before pushing in the tape cutter lever to cut it.
- After printing with the **#**, **##** or **###** tape margin setting, push in the tape cutter lever to cut off the tape, and then use scissors to cut along the printed dots (·) and separate the labels.

MEMORY

You can use the memory to store your most frequently used text. The text file remains in the memory, even after all characters are removed from the display by holding down .

and pressing . Later, the text can easily be reused by recalling it from the memory.

The machine’s memory can store up to 300 characters, which can be divided into as many as nine text files. The maximum capacity for a single text file is 55 characters.

STORING TEXT

Note: To quit the following procedure at any time without making any changes, press .

- Press .
- Press and until **MEMORY** is displayed, and then press (or).
- Press and until **STORE** is displayed, and then press (or). The message “1-9?” appears in the display.
- Press and until the file number where you want to store the text is displayed.
 - OR**
 - Press the key (1-9) corresponding to the file number where you want to store the text.
- Press (or) to store the text. The text previously shown in the display reappears.
 - Note:**
 - If the file number you selected already contains text, the message “ERROR” appears. Press (or) , and then select a different file number.
 - If nine text files are already stored, the message “ERROR” appears. Press (or) , and then delete one of the stored text files before trying to store the current text.
 - If 300 characters are already stored, the message “FULL” appears. Press (or) , and then delete one of the stored text files before trying to store the current text.

RECALLING TEXT

Note: To quit the following procedure at any time without making any changes, press .

- Press .
- Press and until **MEMORY** is displayed, and then press (or).
- Press and until **RECALL** is displayed, and then press (or). The message “1-9?” appears in the display.
- Press and until the text file that you want to recall is displayed.
 - OR**
 - Press the key (1-9) corresponding to the file number of the text that you want to recall.
- Press (or) to clear the display and recall the selected text.

DELETING A TEXT FILE

Note: To quit the following procedure at any time without making any changes, press .

- Press .
- Press and until **MEMORY** is displayed, and then press (or).
- Press and until **DELETE** is displayed, and then press (or). The message “1-9?” appears in the display.
- Press and until the text file that you want to delete is displayed.
 - OR**
 - Press the key (1-9) corresponding to the file number of the text that you want to delete.
- Press (or) to delete the selected text file.

ERROR MESSAGE LIST

ERROR	An error occurred.
BATTERY	The batteries are weak.
B A T T E R Y	The batteries are dead.
FULL	The maximum number of characters (55 characters) have already been entered or the memory is full.

TROUBLESHOOTING

Problem	Solution
1. The display stays blank after you have turned on the machine.	<ul style="list-style-type: none"> Check that the batteries are correctly inserted. If the batteries are weak, replace them. Check that the adapter is correctly connected.
2. The machine does not print, or the printed characters are blurred.	<ul style="list-style-type: none"> Check that the tape cassette has been inserted correctly. If the tape cassette is empty, replace it. Check that the character size is appropriate for the width of the tape that is used.
3. The printed characters are not formed properly.	<ul style="list-style-type: none"> If the batteries are weak, replace them.
4. Striped tape appears.	<ul style="list-style-type: none"> The tape cassette is empty. Replace it.
5. The memory has cleared on its own.	<ul style="list-style-type: none"> The batteries may be weak. Replace them.
6. A blank horizontal line appears through the printed label.	<ul style="list-style-type: none"> There may be some dust on the print head. Remove the tape cassette and use a dry cotton swab to gently wipe the print head with an up-and-down motion. Try printing again, and if dust still remains, dip the cotton swab in isopropyl (rubbing) alcohol and gently wipe the print head again.
7. The machine has “locked up” (i.e., nothing happens when a key is pressed, even though the machine is on).	<ul style="list-style-type: none"> Turn off the machine, and then while holding down and , press to turn the machine back on. <p>Finally, release and .</p> <p>Note: The text and formats in the display and all text files stored in the memory are erased.</p>

SPECIFICATIONS

Keyboard:	42 keys
Print speed:	10 mm/sec.
Character size:	Standard size Double width Double height Double width & double height 4× width & double height
Character font:	HELSINKI
Print tape:	Pressure-sensitive adhesive-based (STZ or TZ) Three widths available: 1/2" (12 mm) 3/8" (9 mm) 1/4" (6 mm)
LCD:	7 × 5 dots 1 line × 8 characters
Power supply:	Six AAA size alkaline batteries (LR03) or optional AC adapter (7V, 1.2A) Auto-power off
Dimensions:	6 1/16" (154 mm) (W) × 5 5/64" (129 mm) (D) × 2 1/2" (64 mm) (H)
Weight:	0.9 lbs. (400 g) (without batteries and tape cassette)
Buffer size:	55 characters
Memory size:	300 characters maximum, 9 text files

IMPORTANT WARRANTY INFORMATION

Thank you for purchasing this Stanley Product. We hope that you will enjoy using it. We suggest that you keep all packing and other materials.

SHOULD YOU ENCOUNTER ANY PROBLEMS WITH YOUR PRODUCT,
**PLEASE DO NOT RETURN YOUR
PRODUCT TO THE STORE!**

After referring to the instruction manual, if you still need assistance, call Brother Customer Service at:

Voice: **1-877-478-6824**

Fax: **1-901-379-1210**

If you need a local service center, please call 1-800-284-HELP to locate the authorized service center closest to you.

- Distributed under license by Brother International Corporation.
- STANLEY is the trademark of The Stanley Works and subsidiaries.