

VOLTA



Volta PowerLite U3701
Volta PowerLite U3702
Instruction Manual

IMPORTANT SAFETY INSTRUCTIONS

Thank you for choosing a Volta Vacuum Cleaner from the Electrolux Group. To ensure total satisfaction, read the instruction manual carefully. Retain for reference.

IMPORTANT SAFETY INSTRUCTIONS

READ ALL INSTRUCTIONS BEFORE USING (THIS APPLIANCE)

When using an electrical appliance, basic precaution should always be followed, including the following: Before connecting the cleaner to an electrical supply outlet ensure that the voltage marked on the rating plate (on the underside of the cleaner) is correct for your electrical supply. If it does not comply, do not use the cleaner prior to contacting the manufacturer.

WARNING – To reduce the risk of fire, electric shock, or injury:

1. Do not leave vacuum cleaner when plugged in. Unplug from outlet when not in use and before servicing.
2. To reduce the risk of electric shock, do not use outdoors or on wet surfaces.
3. Young children should be supervised to ensure that they do not play with the appliance. Close attention is necessary when used near children.
4. The appliance is not intended for use by young children or infirm persons without supervision.
5. Use only as described in this manual. Use only manufacturer's recommended attachments.
6. Do not use with damaged cord or plug. If the vacuum cleaner is not working as it should, has been dropped, damaged, left outdoors, or dropped in water, enter it to a service centre before using.
7. Do not pull or carry on cord, use as a handle. Do not close door on cord, or pull around sharp edges or corners. Do not run the vacuum cleaner over cord. Keep cord away from heated surfaces.
8. Do not unplug by pulling on the cord. To unplug, grasp the plug, not the cord.
9. Do not handle the plug or vacuum cleaner with wet hands.
10. Do not put any object into openings. Do not use with any opening blocked. Keep free of dust, lint, hair and anything that may reduce airflow.
11. Keep hair, loose clothing, fingers and all parts of body away from openings and moving parts.
12. Turn all controls off before unplugging.
13. Use extra care when cleaning on stairs.
14. Do not use to pick up flammable or combustible liquids, such as gasoline, or use in areas where they may be present.
15. Unplug before connecting the hose.
16. Do not pick up anything that is burning or smoking, such as cigarettes, matches, or hot ashes.
17. Do not use without dust bag and/or filter in place.
18. We recommend that you do not use your vacuum cleaner on carpet cleaning foams, sharp or heavy building materials, plaster dust bag or talcum powders. These materials could damage or clog the dust bag pores and cause failures to other components in your vacuum cleaner and render your warranty invalid.
19. Store your cleaner indoors in a cool, dry area.
20. Keep your work area well lighted.
21. It is recommended that before vacuuming other electrical appliances they are switched off. Young children should be supervised to ensure that they do not play with the appliance. Close attention is necessary when used near children.

SERVICE & REPAIR

It is dangerous to alter the specification or modify the product in any way. Under no circumstances should you attempt to repair the cleaner yourself. Repairs undertaken by unauthorized or inexperienced persons may cause injury and/or serious malfunction and may void warranty.

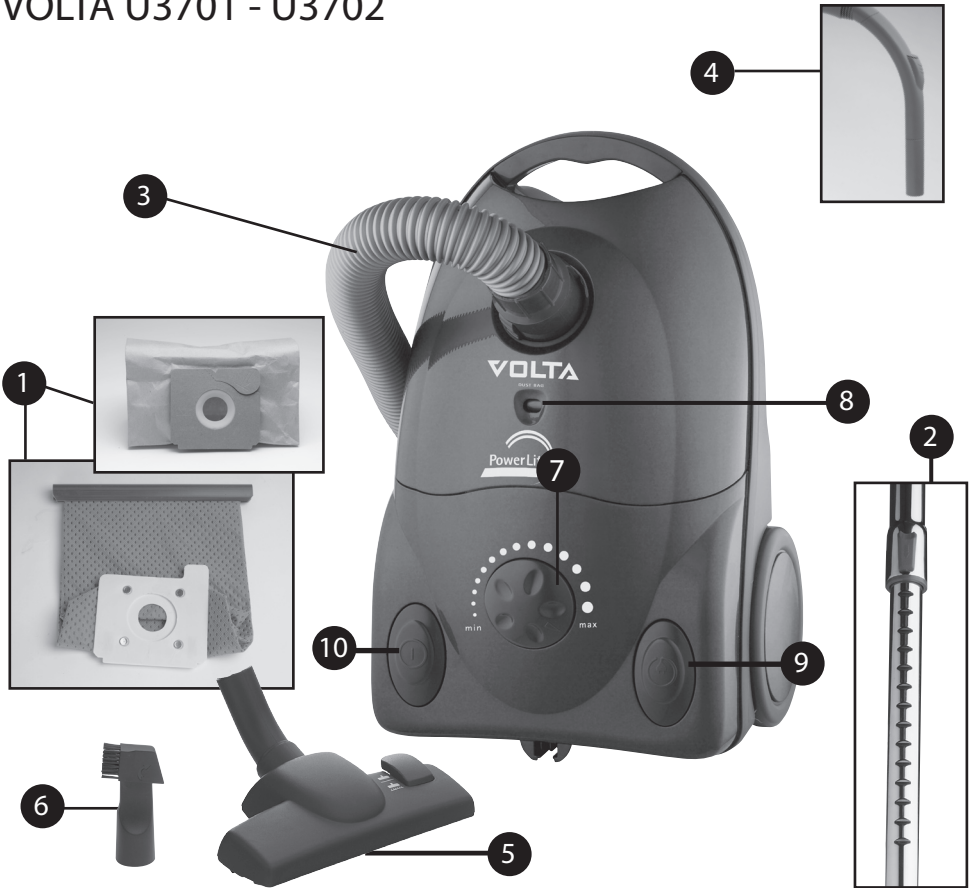
NB! To avoid injury and prevent damage to the machine, a defective lead must only be replaced by an authorized Volta service provider approved by the manufacturer to avoid hazard. The cleaner should be serviced by an authorized Volta service provider and only genuine Volta spare parts should be used.

DOUBLE INSULATION

Your vacuum cleaner is double insulated. This means that all external parts are electrically insulated from the mains. This is done by placing insulation barriers between the electrical and mechanical components, making it unnecessary for the cleaner to be earthed.

PARTS IDENTIFICATION

VOLTA U3701 - U3702



1. Cloth Bag / Paper Dust Bag
2. Telescopic Extension Tube - U3702
Two Piece Tubeset - U3701 (Not pictured)
3. Hose
4. Hose bent end handle with suction control
5. Dual purpose Combination Floor Nozzle
6. Crevice Nozzle combination Dusting Brush, located in the storage cavity at the rear of the cleaner.
7. Variable suction control knob
8. Dust bag full indicator
9. Rewind Pedal
10. Switch On / Off Pedal

ASSEMBLING THE VACUUM CLEANER

BEFORE STARTING



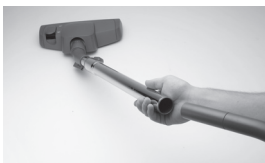
1. Open the dust bag compartment lid.



2. Check that the dust bag is in place.



3. Insert the hose until the catch clicks to engage. Grip the hose connection and press the catches to disengage for removal.



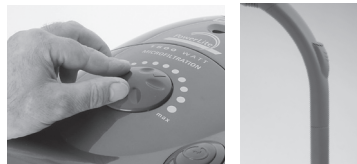
4. Attach the extension tube to the bent end hose handle and the floor nozzle.



5. Pull out the cable and plug it into the power outlet. Remove the plug from the power outlet by the plug not by the cable. When activating the rewind pedal, guide the cable into the cleaner with your hand to prevent it from whipping.



6. Press the On / Off pedal with your hand to start and stop the vacuum cleaner.



7. Adjust the suction power using the variable power control knob on the vacuum cleaner or the suction control on the hose bent end handle.

GETTING THE BEST RESULTS



Hard Floors

Use the dual purpose floor nozzle with the pedal as shown.

INSTRUCTIONS FOR USE



Carpets

Use the dual purpose floor nozzle with the pedal as shown. Reduce the suction power for rugs and fabrics.

Loose rugs/curtains/light weight fabrics

Reduce the suction power. Use the Floor nozzle for loose rugs and the upholstery nozzle for curtains cushions etc.



Confined areas

Use the crevice nozzle for crevices corners and radiators. Dusting brush use for removal of dust coverage on furniture and slatted blinds.

Changing of the Paper or emptying of the Cloth bag

Always operate the cleaner with the dust bag installed. If you forget to install the paper or cloth bag or fit it in the incorrect manner the dust bag compartment will be difficult to close. This is a safe guard so that the cleaner cannot be used without a paper or cloth bag installed.

Replace the paper or empty the cloth bag at the time the dust indicator is showing completely red, when the cleaner is operating at maximum power and the Floor nozzle is raised off the floor.



1. Remove the hose and open the dust bag compartment cover.



2. Holding the bag plate, remove the bag from the holder.



3. Fit the new dust bag by inserting the cardboard plate into the seating to the fullest extent in the holder.



4. Adjust the bottom corners and the upper part of the dust bag for seating into the dust bag compartment and close the lid.

In case of using a cloth bag

- Follow the steps 1 and 2 on page 4.
- To open the bag, remove the plastic clip by sliding it off the bag.
- Empty the bag, realign the bag folds, bag seal and slide on the plastic clip.
- Refit the bag in the holder, ensuring it is seated in position and close the dust compartment cover until it is locked.

Note: The cloth bag may be washed in lukewarm water and dried completely. It should not be washed in washing machine.



Note: Replace the paper dust bag even if it is not full (the pores may be blocked). It is also recommended to replace the bag after using cleaning powder. Use only genuine replacement bags. Dust Bag Part No T196F/1002 (Menalux).

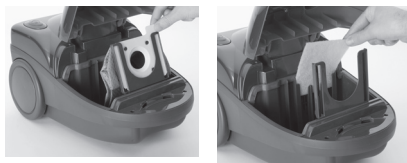
WARNING: On collection of Proprietary carpet conditioning powders, plaster / concrete dust, it is recommended that the dust bag is changed. Some of the preparations contain substances which if left in the vacuum cleaner for extended periods. could create damage. Many air fresheners, household deodorants, sprays and polishes contain highly inflammable gas propellants. Because of this it is particularly important that these products are used strictly in accordance with the relevant manufacturers instructions It is essential that none of the above products are sprayed directly into the vacuum cleaner or any of the filters, hose assembly or dust chamber.

SPARES

New filters and dust bags can be obtained from your Authorised Volta service provider, please refer to the Electrolux Floor Care and Small Appliances Website, www.electrolux.com.au or contact our customer service on 1300 366 366.

CLEANING THE MOTOR FILTER.

It is recommended that the motor filter should be cleaned approximately every three months or when it is visibly soiled.



- Open the dust bag compartment cover and remove the dust bag from the holder. Lift out the motor protection filter and holder from the locating position in the rear wall. Inspect the filter, if heavily soiled replace it, lightly soiled, wash and leave to dry completely before installing it back into the cleaner.



- On fitting the filter complete with holder, ensure it is seated in position correctly and the bag is seated in the bag holder, before closing the dust compartment lid.

Replacement Motor filter Part No F9001. (Menalux)

MAINTENANCE

REPLACEMENT OF THE MICRO EXHAUST FILTER

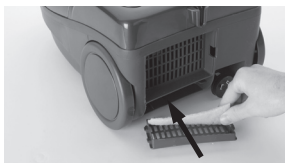
We recommend that the micro exhaust filter is inspected at the same of replacing or washing the motor filter. If it is found to be heavily soiled it should be replaced.



1. Open the filter grille positioned at the rear of the Cleaner.



2. Remove the micro exhaust filter from the rear housing, inspect the condition of the filter. If heavily soiled replace the filter. **Micro exhaust filter Part No F9000 (Menalux)**



3. Place the micro exhaust filter into the rear housing.



4. Fit the grille into the rear housing ensuring the locating tabs are located in position and push the grille for the latch to lock.

The vacuum cleaner stops automatically if the nozzle, tubes or hose becomes blocked or if the filters are blocked, this is due to a safety precaution which prevents the motor from overheating. The vacuum cleaner is to be switched off by the switch pedal and at the mains power outlet and the plug removed from the power outlet, grasping the plug not the cord for removal.



Allow the vacuum cleaner to cool down for approximately 30 minutes before resumption of cleaning.

CLEANING THE HOSE AND NOZZLE

Tubes And Hose



Use a flexible hose or similar item to clear the tube and the hose. It is sometimes possible to clear the blockage in the hose by "massaging" it. However, be careful in case the obstruction has been caused by glass or needles caught inside the hose.

Note: the warranty does not cover any damage to hoses caused by cleaning them.

Cleaning The Floor Nozzle



It is recommended to frequently clean the dual purpose floor nozzle, this will avoid the reduction of suction and prevents the lever for changing from hard floors to soft floors being difficult to activate. The easiest way to clean the nozzle is by connecting the hose to the vacuum cleaner and use the hose bent end handle.

The vacuum cleaner does not start

1. Check that the power cord is connected to the mains power outlet.
2. Check that the plug and power cord are not damaged.
3. Check for a faulty / blown fuse or that the circuit breaker has not been switched off.

The vacuum cleaner stops

1. Check whether the dust bag is full, if so empty it.
2. Is the nozzle tube or hose blocked?
3. Are the filters blocked?

Water has entered the vacuum cleaner

It will be necessary for the Fan Unit / Motor to be checked and if required replaced by an Authorised Electrolux service centre.


Damage to the Fan Unit / Motor caused by penetration of water is not covered by warranty.

CUSTOMER INFORMATION

Electrolux Pty Ltd decline all responsibility for all damages arising from improper use of the appliance, or in cases where there has been tampering with the appliance other than by an Authorised Electrolux Service agent.

This appliance has been designed with the environment in mind and all plastic parts are marked accordingly for recycling purposes. Please consult the service agents listing enclosed with this vacuum cleaner for your closest service agent for servicing or to obtain accessories for your vacuum cleaner or contact our customer service line noted on the back cover of this booklet. If you require further details please consult our website noted on the back cover of this booklet.



The symbol  on the product or on its packaging indicates that this product may not be treated as household waste. Instead it is to be handed over to the applicable collection point for the recycling of electrical and electronic equipment.

By ensuring this product is disposed of correctly, you will help prevent potential negative consequences for the environment and human health, which could otherwise be caused by inappropriate waste handling of this product.

For more detailed information about recycling of this product please contact your local city office, your household waste disposal service or the store where you purchased this product.

WARRANTY

for sales in Australia and New Zealand

APPLIANCE: VOLTA BRAND VACUUM CLEANERS

WARRANTY

This page sets out the terms and conditions of product warranties for Volta branded vacuums from the Electrolux Group. Please keep with your proof of purchase documents in a safe place for future reference should you require service for your Volta appliance.

General Terms and Conditions

In this warranty Electrolux means Electrolux Pty Ltd ABN 21 000 015 136 in respect of Appliances purchased in Australia and Electrolux (NZ) Limited in respect of Appliances purchased in New Zealand;

'Appliance' means any Volta branded product purchased by you accompanied by this document;

'Warranty Period' means where you use the Appliance for personal, domestic or household purposes in Australia and in New Zealand, the period of 24 months; where you use the Appliance for commercial purposes, the period of 3 months following the date of original purchase of the Appliance; 'you' means the purchaser of the Appliance not having purchased the appliance for re-sale, and 'your' has a corresponding meaning.

- 1) This warranty only applies to Volta branded appliances purchased and used in Australia or New Zealand and is in addition to (and does not exclude, restrict, or modify in any way) any non-excludable statutory warranties in Australia or New Zealand.
- 2) Electrolux warrants that, when dispatched from an Electrolux warehouse, the Volta branded appliance is free from defects in materials and workmanship for the Warranty Period.
- 3) During the warranty period Electrolux or its Authorised Service Centre will, at no extra charge and subject to these terms and conditions, repair or replace any parts which it considers to be defective. You agree that any replaced Appliances or parts become the property of Electrolux. This warranty does not apply to bonus giveaways or batteries, drive belts, filters, accessories or similar consumable parts.
- 4) You are responsible for paying all service call fees and/or transport charges and/on damages and loss incurred in connection with transportation of this appliance to and from Electrolux or its duly appointed service provider's premises.
- 5) Parts and appliances not supplied by Electrolux are not covered by this warranty.
- 6) Proof of purchase is required before you can make a claim under this warranty

You may not make a claim under this warranty unless the defect claimed is due to faulty or defective parts or workmanship. Electrolux is not liable in the following situations (which are not exhaustive):

A) The Appliance is damaged by:

- (i) use with anything other than Volta genuine spare parts
- (ii) accident
- (iii) vacuuming up wet materials or construction/building materials that is not normal day to day domestic dry use
- (iv) misuse, neglect or abuse, including failure to properly maintain or service
- (v) normal wear and tear
- (vi) power surges, electrical storm damage or incorrect power supply.
- (vii) incomplete or improper installation
- (viii) incorrect, improper or inappropriate operation
- (ix) insect or vermin infestation.

B) The Appliance is modified without authority from Electrolux in writing.

C) The Appliance's serial number or warranty seal has been removed or defaced.

D) The Appliance was serviced or repaired by anyone other than Electrolux or its Authorised Service Centres.

This warranty, the contract to which it relates and the relationship between you and Electrolux are governed by the law applicable in the State where the Appliance is purchased if the Appliance is purchased in Australia or the law applicable in New Zealand if the Appliance is purchased there. Where the Appliance is purchased in New Zealand for business purposes the Consumer Guarantee Act does not apply.

Limitation of Liability

To the extent permitted by law:

A) Electrolux excludes all warranties other than as contained in this document;

B) Electrolux shall not be liable for any loss or damage whether direct or indirect or consequential arising from your purchase, use or non-use of the Appliance.

Provisions of the Trade Practices Act and State consumer legislation in Australia, and the Consumer Guarantees Act, the Sale of Goods Act and the Fair Trading Act in New Zealand, imply warranties or conditions, or impose obligations, upon Electrolux which cannot be excluded, restricted or modified. To the extent permitted by law, the liability of Electrolux (if any) arising out of or in relation to the Appliance or any services supplied by Electrolux shall be limited (where it is fair and reasonable to do so):

in the case of Appliances, at its option, to the replacement or repair of the Appliances or the supply of equivalent products or the payment of the cost of replacing the Appliances or having the Appliances repaired or of acquiring equivalent Appliances. Upon being replaced, parts and Appliances become the property of Electrolux; or

in the case of services, at its option, to the supply of the services again or the payment of the cost of having the services re-supplied;

and in the case of Appliances or services supplied in New Zealand, loss or damage whether direct or indirect or consequential that is reasonably foreseeable.

Privacy

You acknowledge that in the event that you make a warranty claim it will be necessary for Electrolux and its Authorised Service Centres to exchange information in relation to you to enable Electrolux to meet its obligations under this warranty.

KEEP THIS FOR YOUR RECORDS

To be completed by the Purchaser

Model

Serial No.....

Date of Purchase.....

Retailers Name.....

Retailers Address.....

.....

City..... State.....

Attach Your Purchase Receipt Here

Electrolux Floor Care and Small Appliances
Electrolux Pty Ltd ACN 000 015 136
13 Gilbert Park Drive, Knoxfield Victoria,
Australia, 3180. Ph: (03) 8756 7300
Customer Service Ph:1 300 366 366
www.electrolux.com.au

Electrolux Floor Care and Small Appliances
A division of Electrolux (NZ) Limited
130 Cryers Road, East Tamaki, Auckland
New Zealand. Ph: (09) 273 8340
www.electrolux.co.nz

*Some models may be limited in availability or be available from certain stores only. Not all models and specifications are available at time of printing and not all models are available in NZ. See your local Volta retailer or call the above phone numbers for further information if required.

*Due to the Electrolux policy of continual product development; specifications, colours and details of our products and those mentioned in this manual are subject to change without notice.

 **From the Electrolux Group.**