

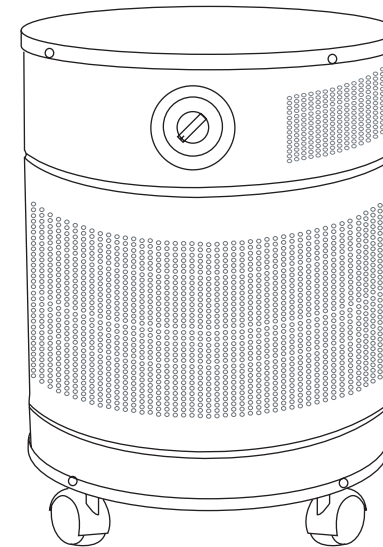
AllerAir Advantage

All metal housing to avoid plastic off-gasing
Totally inert gaskets. No use of rubber or neoprene
Separate carbon and HEPA filters for easier,
less costly maintenance
No ozone emissions

Our Famous Guarantee

More filtration.
More features.
Better value.

Call our indoor air quality experts
1-888-852-8247
or
Visit our website:
www.allerair.com
For more information



Model **airMedic+**

Operation and Maintenance Manual

AllerAir Industries Inc. Air Medic +

Congratulations, you are moments away from fresher, cleaner indoor air. Your new **AllerAir** unit will combat many of the chemicals, gases, odors and particles responsible for poor indoor air quality, and in turn, health concerns such as allergies, asthma, sick building syndrome and multiple chemical sensitivity. As with any air cleaner, proper maintenance of your unit is a vital part of keeping it operating at peak efficiency.

WARNING!

Before removing the top or bottom of the unit for any reason, always unplug the cord from the power supply.

Operation:

Most Air Medic units are shipped fully assembled and ready for use with the exception of the D & DX model which ship with their large carbon filters in a separate box. This is done to safeguard your unit during shipping. To insert the filter, refer to the **Filter Assembly Air Medic, Air Medic D** diagram. (note warning) Please plug units into a 120V-15amp outlet. For best results, situate your unit close to your sitting, sleeping or work area.

Note: Please save your packaging. Original packaging will be required for all warranty returns.

Maintenance:

HEPA Filter

- Change the HEPA filter every 3 - 5 years or after a noticeable decrease in air quality.

Pre-Filter

- Change or vacuum the pre-filter every 2 - 4 months depending on the dust level in the area of use.

Carbon

- Change the carbon filter after 2 years or after a noticeable decrease in air quality.

Replacement parts:

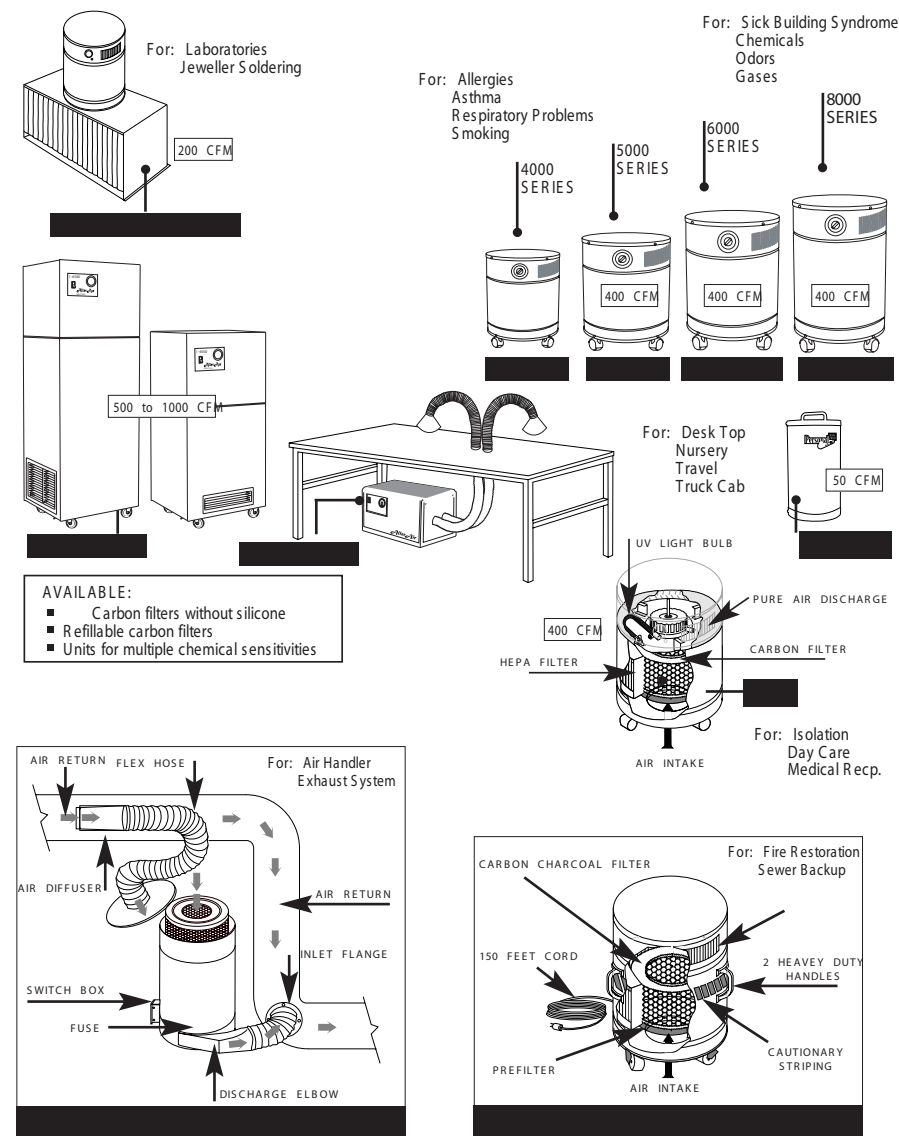
Models	Prefilters	Notes	Models	Prefilters	Notes
N6FMPW001	White prefilter	Packs of 4	AM000912	Bulk Vocarb carbon mix	44 lb box
N6FMPB002	Black prefilter	Packs of 4	AM000912 (2")	Bulk Vocarb carbon mix	44 lb box
N6FH0411	HEPA filter	1 filter	AM000912 (3")	Bulk Vocarb carbon mix	44 lb box
A5FMR002	Micro particulate filter	Pack of 1	A4EL0050	3-way switch	1
AM000911	Bulk Exec carbon mix	44 lb box	A4EL0045	8'-6" black cord	1
			A4EL9008	Control knob	1

NOTE: white & sandstone units have white prefilters
black units have black prefilters

Check out other AllerAir products

Serious Purification Systems (Over 80 Models Available)

* Air flow from 50 to 5000 CFM



FILTERS ASSEMBLY - Air Medic +

Follow this instruction when your filters and unit are shipped in separated boxes.

The AllerAir AirMedic+ - Indoor Air Purification System

Congratulations, you are moments away from fresher, cleaner indoor air. Your new **AllerAir** unit will combat many of the chemicals, gases, odors and particles responsible for poor indoor air quality, and in turn, health concerns such as allergies, asthma, sick building syndrome and multiple chemical sensitivity. As with any air cleaner, proper maintenance of your unit is a vital part of keeping it operating at peak efficiency.

Operation:

Your unit is shipped fully assembled and ready for use. Plug into 120V-15amp outlet. For best results situate your unit close to your sitting, sleeping or work area.

NOTE: Please save your packaging. Original packaging will be required for all warranty returns.

TEN YEAR LIMITED WARRANTY

AllerAir units in this series are covered by a ten-year warranty against defects in materials and workmanship for a period of ten years from the date of purchase. **Warranties are limited to the original purchaser and are thus non-transferrable.**

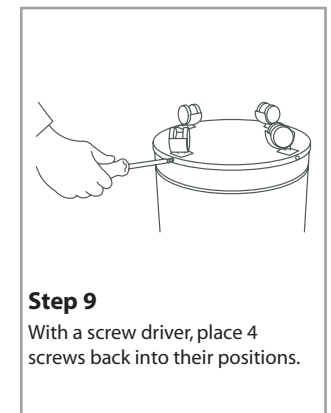
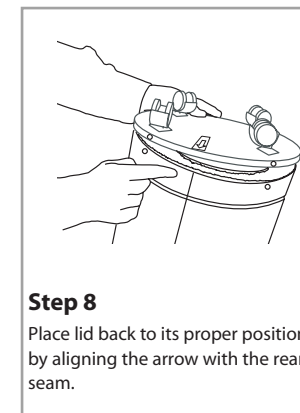
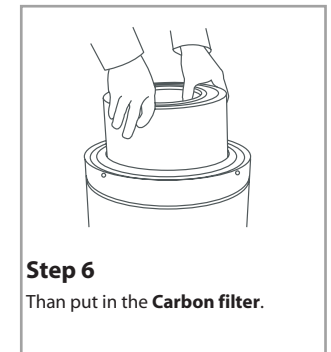
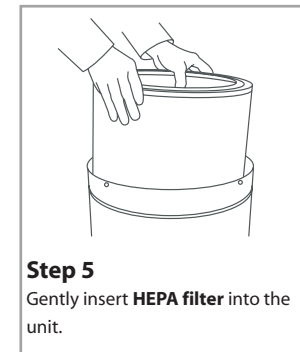
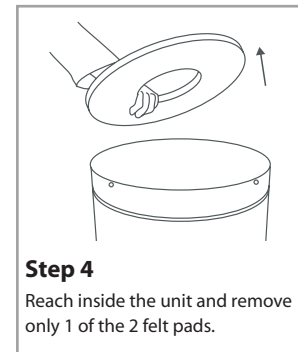
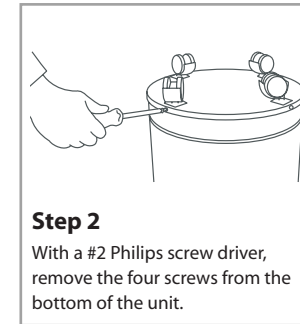
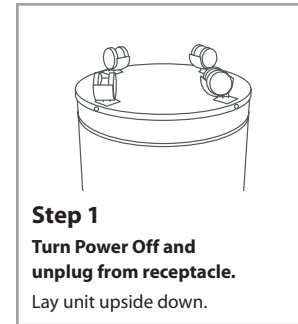
Units must be shipped back to AllerAir in their original packaging. Clients are responsible for insuring packages with carriers such as UPS.

The warranty does not cover expendable parts such as filters and pre-filters.

AllerAir Industries Inc. is not liable for any consequential damages for breach of this or any other warranty expressed or implied whatsoever.

Five years parts and labor additional five years parts.

AllerAir top quality air purification machines are distributed worldwide for commercial, residential, institutional and industrial use. The units employ cutting-edge technology, and are built according to the highest standards required for health and safety.



Step 10
Gently turn the unit back onto its wheels. And your AllerAir purifier is now ready for use.

FILTER ASSEMBLY - Air Medic D

D Models have a 3" deep carbon filter.

STEP 1
Turn Power off and unplug receptacle. Lay unit upside down.

STEP 2
With a #2 Philips screw driver, remove the four screws from the bottom of the unit.

STEP 3
Gently grasp wheels. Remove base by gently pulling on the wheels

STEP 4
Remove **only one** of the white, felt, donut-shaped gaskets from the inside of the purifier body.

STEP 5
Insert the carbon filter (either a Model 600D Carbon)

STEP 6
Replace the gasket that had been removed in **STEP 4**.

STEP 7
Place lid back to its proper position by aligning the arrow with the rear seam.

STEP 8
Replace the four screws.

STEP 9
Turn the unit back onto its wheels. It is now ready for immediate use.

LASER TESTED TRUE HEPA

HEPA (High Efficiency Particulate Arrestance) filters were developed for the Atomic Energy Commission to remove radio active dust from their laboratories. They are now the primary filtration systems for electronic clean room assembly, hospital surgeries, bio engineering, pharmaceutical laboratories and any other space where clean air is critical.

HEPA will trap microscopic dust which will give you distress from allergies, asthma, respiratory problems, chemical sensitivities and sick building syndrome. It will trap 99.97% of all particles down to 0.3 microns (including bacteria, dust mite antigens, respiratory particles, fungal and other microbiologicals). For these reasons that HEPA filtration is recommended by more allergists, medical professionals and clean air consultants than any other filter system available.

CARBON FILTER (ACTIVATED AND GRANULATED)

We use only activated granular carbon mixed with zeolite and specially impregnated carbons. We stay away from dust carbon which has been impregnated onto a poly or foam material. This type of carbon filter has to be changed as often as every week to be fully effective. AllerAir's carbon filter can last up to 2 or 3 years and more, depending on the level of toxins in the area.

The activated carbon we use can adsorb up to 60% of its own weight in toxic gases, fumes and chemicals. These toxic substances make us ill, and are found in every home, office and industry.

OTHER FILTERING SYSTEMS AVAILABLE

Ozone generators, negative ion machines and electrostatically charged units all generate ozone which is a toxic substance. Any unit which provides ozone cannot be recommended by Health and Welfare or by the Lung Association.

AllerAir's units on the other hand do not produce any ozone whatsoever. The latest air purification technology does not add anything to the air (especially impurities like ozone or P.V.C.s). AllerAir's unit scrubs impurities and toxins out of the air.

ENERGY COSTS

We use a high efficiency motor which cost pennies a day to operate in contrast to almost all other manufactures who use the lowest price motor available. One of the reasons we can offer ten year warranty is because of the sophisticated motor we use. We have spared no effort to give you the most for the least.

ADDITIONAL INFORMATION

The AirMedic+ unit you have purchase is equipped with a variable speed control to allow you to control the air flow and sound to a very low level.

The air coming out of the unit may feel cool to your hand, but the temperature of the air is actually the same. And AllerAir units are specially designed to have no offgasing because our entire unit housing is made of steel.

IMPORTANT NOTICE

To receive maximum use of HEPA filter media when used in freshly painted room, you should first remove the HEPA filter from the unit to avoid contaminating the HEPA media. Turn unit off and Unplug unit. Remove bottom screws. Open bottom of unit, Grasp outer filter ring firmly with both hands and remove carefully. Close unit, plug into grounded receptacle then turn on. Replace carbon filter before reinstalling HEPA filter.

Do not allow any object to be stuck or poked into any opening of the unit. Never service the unit before turning unit off and removing electrical plug from the wall receptacle.