

6 1/2-Inch Stereo Ceiling Speaker

40-4092

OWNER'S MANUAL — Please read before using this equipment.

! IMPORTANT !

If an icon appears at the end of a paragraph, go to the box on that page with the corresponding icon for pertinent information.

⚠ — Warning

! — Important

⚡ — Caution

💡 — Hint

📄 — Note

Your RadioShack 6 1/2-Inch Stereo Ceiling Speaker features two cross-overs, a 6 1/2-inch dual voice coil woofer for rich lows, and two 1/2-inch tweeters for crisp highs. The speaker can be connected to work in either mono or stereo configurations. The angled tweeter array provides optimum stereo separation and gives you stereo sound from

just one speaker. Your speaker can handle up to 80 watts of music power. The wing-type mounting system makes it easy to mount your speaker flush with a ceiling or wall, making it ideal for unobtrusive use in a surround-sound system. The frame and grille can also be painted to match the room's decor.

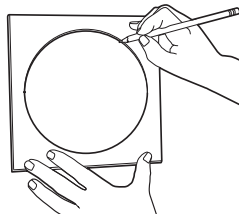
INSTALLATION

PREPARING THE LOCATION

To mount your speaker, you need the following items (not supplied, available at your local RadioShack or online at RadioShack.com).

- drywall or keyhole saw
- wire stripper
- Phillips screwdriver
- pencil or marker
- 18–20 gauge speaker wire

1. Be sure the mounting surface is between 3/8 inch and 1 1/4 inch thick, with at least a 2 3/4-inch clearance behind the mounting surface and no wall studs or other objects to block the back of the speaker.
2. Remove the inner cardboard disc from the supplied template/paint mask and keep it for later. Use the outer portion as a template to mark the cutout hole size and location for mounting the speaker.

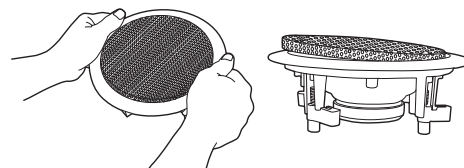


3. Use a drywall or keyhole saw to cut the hole. ⚡

PREPARING THE SPEAKER

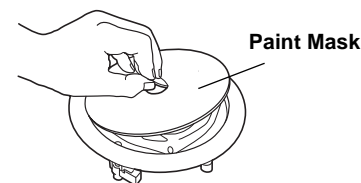
If you choose to paint the frame and grille, paint them and let them dry before you connect the speaker wire or mount the speaker.

To remove the grille for painting, insert a paper clip into one of the grille openings, then pull up. Or, you can carefully twist the plastic frame back and forth until the grille edge becomes exposed, then lift the grille to remove it.



Carefully remove the dust cloth from behind the grill and replace it after you are finished painting. 📄

You can also paint the frame to match your wall or ceiling. To prevent paint from entering the speaker, remove the grille and insert the supplied cardboard paint mask. After the paint is dry, remove the paint mask and replace the grille.



CONNECTING THE SPEAKER WIRES

Your local RadioShack store sells a wide selection of speaker wire. We recommend you use wire that is color-coded or marked on one side to help you connect the wire correctly.

For a stereo configuration, route two sets of wires to the speaker from the receiver. 📄

For a mono configuration, route one set of wires.

📄 NOTE 📄

Do not paint the speaker element. We recommend you spray-paint the grille so paint does not block the holes.

⚡ CAUTION ⚡

Be sure not to cut into any existing wiring or plumbing hidden behind the wall.

📄 NOTES 📄

- Avoid routing the speaker wire near electrical wires.
- Do not nail or staple the speaker wire.



RadioShack®

www.radioshack.com™

© 2002 RadioShack Corporation.
All Rights Reserved.

RadioShack and RadioShack.com are trademarks
used by RadioShack Corporation.

Limited Two-Year Warranty

This product is warranted by RadioShack against manufacturing defects in material and workmanship under normal use for two (2) years from the date of purchase from RadioShack company- owned stores and authorized RadioShack franchisees and dealers. EXCEPT AS PROVIDED HEREIN, RadioShack MAKES NO EXPRESS WARRANTIES AND ANY IMPLIED WARRANTIES, INCLUDING THOSE OF MERCHANTABILITY AND FITNESS FOR A PARTICULAR PURPOSE, ARE LIMITED IN DURATION TO THE DURATION OF THE WRITTEN LIMITED WARRANTIES CONTAINED HEREIN. EXCEPT AS PROVIDED HEREIN, RadioShack SHALL HAVE NO LIABILITY OR RESPONSIBILITY TO CUSTOMER OR ANY OTHER PERSON OR ENTITY WITH RESPECT TO ANY LIABILITY, LOSS OR DAMAGE CAUSED DIRECTLY OR INDIRECTLY BY USE OR PERFORMANCE OF THE PRODUCT OR ARISING OUT OF ANY BREACH OF THIS WARRANTY, INCLUDING, BUT NOT LIMITED TO, ANY DAMAGES RESULTING FROM INCONVENIENCE, LOSS OF TIME, DATA, PROPERTY, REVENUE, OR PROFIT OR ANY INDIRECT, SPECIAL, INCIDENTAL, OR CONSEQUENTIAL DAMAGES, EVEN IF RadioShack HAS BEEN ADVISED OF THE POSSIBILITY OF SUCH DAMAGES.

Some states do not allow limitations on how long an implied warranty lasts or the exclusion or limitation of incidental or consequential damages, so the above limitations or exclusions may not apply to you.

In the event of a product defect during the warranty period, take the product and the RadioShack sales receipt as proof of purchase date to any RadioShack store. RadioShack will, at its option, unless otherwise provided by law: (a) correct the defect by product repair without charge for parts and labor; (b) replace the product with one of the same or similar design; or (c) refund the purchase price. All replaced parts and products, and products on which a refund is made, become the property of RadioShack. New or reconditioned parts and products may be used in the performance of warranty service. Repaired or replaced parts and products are warranted for the remainder of the original warranty period. You will be charged for repair or replacement of the product made after the expiration of the warranty period.

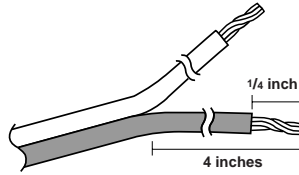
This warranty does not cover: (a) damage or failure caused by or attributable to acts of God, abuse, accident, misuse, improper or abnormal usage, failure to follow instructions, improper installation or maintenance, alteration, lightning or other incidence of excess voltage or current; (b) any repairs other than those provided by a RadioShack Authorized Service Facility; (c) consumables such as fuses or batteries; (d) cosmetic damage; (e) transportation, shipping or insurance costs; or (f) costs of product removal, installation, set-up service adjustment or reinstallation.

This warranty gives you specific legal rights, and you may also have other rights which vary from state to state.

RadioShack Customer Relations, 200 Taylor Street,
6th Floor, Fort Worth, TX 76102

12/99

1. Separate about 4 inches of speaker wire at each end.



2. Using a wire stripper, remove about 1/4 inch of insulation from each wire. Then twist the ends of each wire.

STEREO CONFIGURATION

1. Connect the marked wire to a red speaker terminal by pressing the release tab, inserting the wire into the hole, and then releasing the tab. Repeat this procedure to connect the unmarked wire to the black terminal on the same terminal block.
2. Repeat Step 1 to connect the second set of wires to the other terminal block.
3. For the first set of wires, connect the marked wire coming from the speaker to the left channel of the receiver's positive (+) terminal. Then connect the unmarked

wire to the left channel of the amplifier's negative (-) terminal.

4. Repeat Step 3 to connect the remaining set of wires to the receiver's right channel terminals.

MONO CONFIGURATION

Wire the two sets of terminals located on the back of the speaker in parallel or series.

To connect in parallel:

1. Using two pieces of wire, connect both sets of red terminals together and both sets of black terminals together.
2. Connect the wires from the receiver to one set of terminals as described in "Stereo Configuration" Step 1.

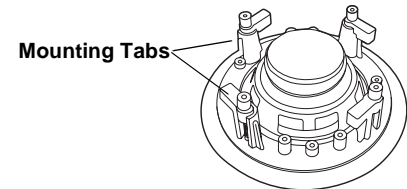
To connect in series:

1. Using one piece of wire, connect the red terminal of one set of terminals to the black terminal of the other set.
2. Connect the wires from the receiver to the remaining black and red terminals.

MOUNTING THE SPEAKER

1. Remove the grille to expose the mounting screws.
2. Be sure the mounting tabs are turned in, allowing the speaker to fit into the hole. Then insert the speaker into the mounting hole.
3. Use the four screws to tighten the mounting tabs to the wall or ceiling. Be careful not to overtighten the screws.

4. Replace the grille.



To remove the speaker from the wall or ceiling, loosen the screws only far enough to remove the speaker. This will prevent loss of the mounting tabs.

SPECIFICATIONS

Resonance Frequency	55 Hz ±20%
Frequency Response	30 Hz through 20 kHz
Power Rating	40 Watts RMS, 80 Watts Max.
Impedance (nominal)	8 Ohms
Sensitivity...Mono (Series/Parallel), Stereo	83 dB ±3 dB
Voice Coil (Woofer 4 layer)	1 in. (25 mm)
Voice Coil (Tweeter ea.)55 in. (14 mm)
Magnet Size (Woofer)	11 oz

The plastic enclosure for this speaker meets UL 94 requirements for flammability.

Specifications are typical; individual units may vary. Specifications are subject to change or improvement without notice.