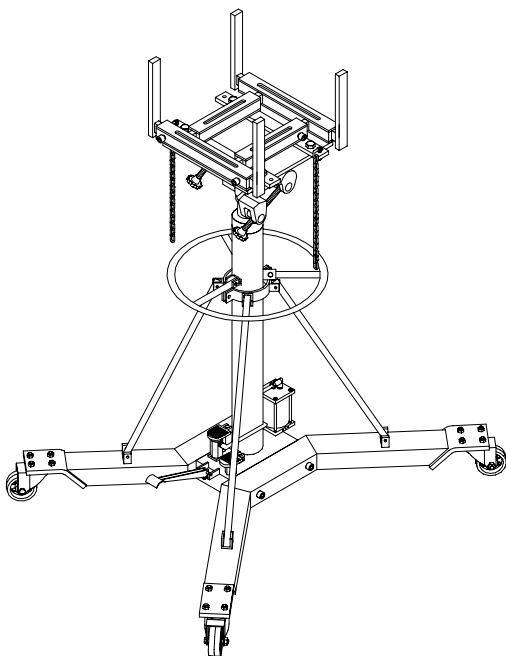


ATD TOOLS, INC.

PRODUCT SPECIFICATIONS

MODEL #:	Atd-7434
DESCRIPTION:	AIR/LEVER ACTUATED TELESCOPIC HYDRAULIC TRANSMISSION JACK
CAPACITY:	2000 LBS
JACK SIZE:	42 1/8" (L) X 39 1/2" (W) X 48 5/8"(H)
MIN. HEIGHT:	48 5/8"
MAX. HEIGHT:	77 3/8"
OPERATING FORCE:	67.0 LBS
SADDLE TILT:	45° (forward) 30° (backward) ± 15° (side)
SADDLE AREA:	15 1/2" X 12 5/8" 24 1/2" X 18 7/8" (extended)
VOLUME OF HD. OIL:	2000 C.C.
AIR PRESSURE REQUIRED:	90-175 PSI
REQUIRED HP OF AIR COMP.:	3 HP
AIR CONSUMPTION:	7.8 CUFT/MIN. (FOR FULL LIFT)
NET WEIGHT:	286.0 LBS
GROSS WEIGHT:	316.4 LBS
CARTON DIM.:	47 5/8" (L) X 19 1/2" (W) X 16 1/8" (H)
CUFT.:	8.67 CUFT (85 PCs/ 20' CTN)



FEATURE

- MEETS ASME/ANSI - PALD SAFETY STANDARDS
- CHROME PLATED RAM
- AIR/HYDRAULIC POWER FOR MAXIMUM SPEED AND ACCURACY
- LIFTING RANGE: 48 5/8" TO 77 3/8"
- FOUR ADJUSTABLE LOAD SUPPORT ARMS FIT ALL TRANSMISSION PAN FLANGES
- FOOT OPERATED PUMP AND RELEASE LEAVES OPERATOR'S HANDS FREE
- WIDE BASE PROVIDES STABILITY; FOUR FULL SWIVEL BALL BEARING CASTERS MAKE MANEUVERING EASY
- PATENTED BUILT-IN BY-PASS DEVICE MECHANISM

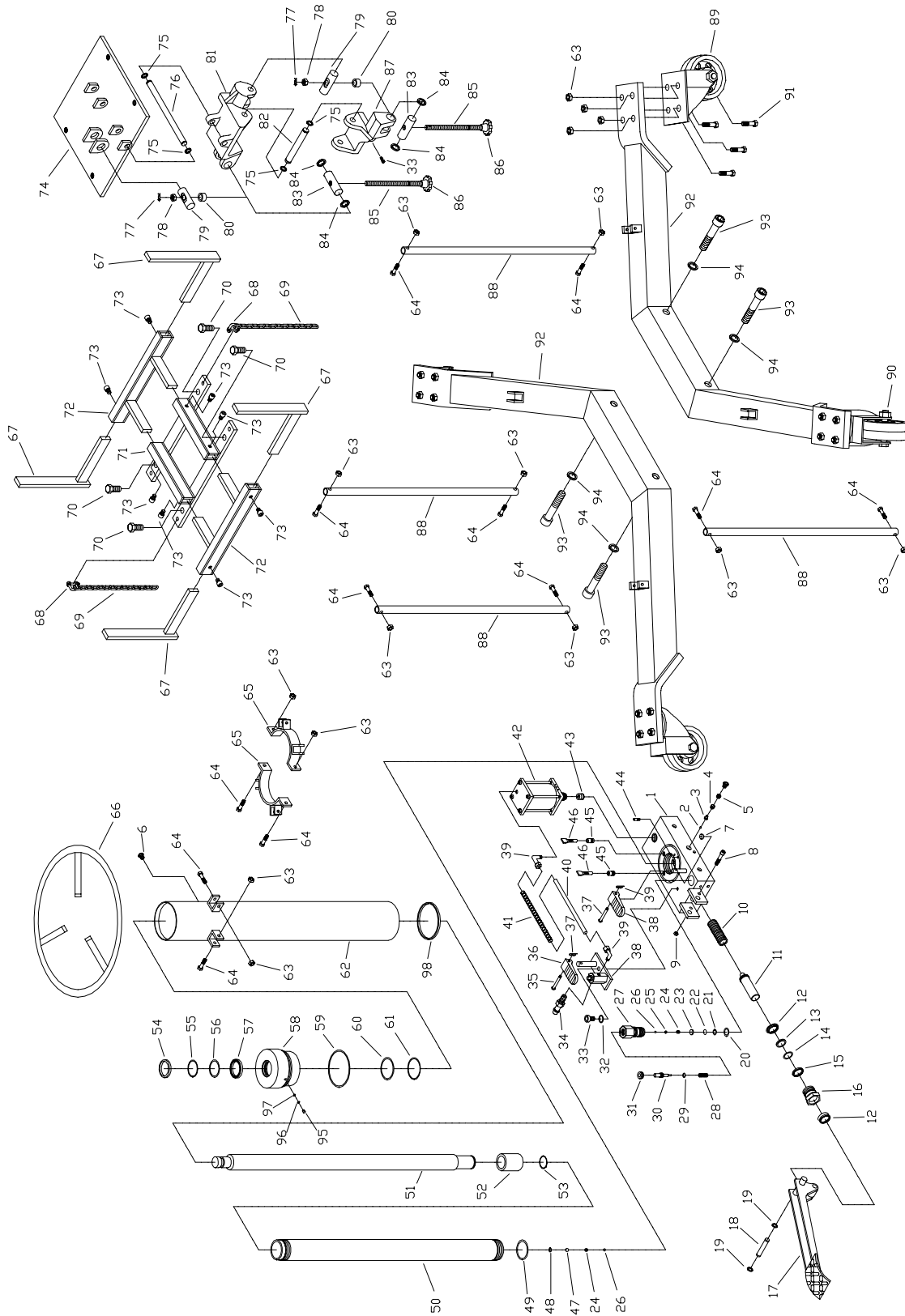


SPARE PARTS LIST

Model # Atd-7434

ITEM	PARTCODE	DESCRIPTION	QTY	ITEM	PARTCODE	DESCRIPTION	QTY
1	*	base	1	51	*	piston rod	1
2	601-7-0007-007	steel ball	1	52	G37-6-1204-105	guide ring	1
3	501-9-0085-303	spring cap	1	53	139-6-1214-107	retaining ring	1
4	512-2-0077-105	spring	1	54	*	seal	1
5	426-6-1201-106	safety valve screw	1	55	*	back-up ring	1
6	324-4-1900-208	filler screw	1	56	*	o-ring	1
7	G36-6-1606-108	magnet	1	57	*	u-cup	1
8	649-1-0079-114	bolt	1	58	*	top nut	1
9	661-2-0079-101	nut	1	59	*	o-ring	1
10	512-2-0250-103	spring	1	60	*	o-ring	1
11	G37-6-1401-107	pump piston	1	61	*	back-up ring	1
12	*	u-cup	1	62	G37-3-1803-109	reservoir assy.	1
13	*	o-ring	1	63	661-2-0080-023	nut	29
14	*	back-up ring	1	64	653-1-0080-045	hex. bolt	13
15	*	o-ring	1	65	G37-3-1320-109	bracket	2
16	G37-6-1402-109	pump piston guide ring	1	66	G37-3-1806-105	handle assy.	1
17	*	foot pedal	1	67	G37-3-2903-108	saddle support bar	4
18	G37-6-1603-109	spindle	1	68	G52-4-4102-101	chain & hook	4
19	667-5-0127-005	retaining ring "C"	2	69	G36-6-7000-102	chain	2
20	515-3-0180-206	copper gasket	1	70	653-1-0159-109	bolt	4
21	666-5-0150-104	retaining ring "C"	1	71	G37-3-2901-104	support seat	1
22	G37-6-1708-103	spring washer	1	72	G37-3-2902-106	adjustable bracket	2
23	G37-6-1706-109	spring cap	1	73	649-1-0095-103	hex. bolt	8
24	521-2-0062-020	spring	2	74	G37-3-4200-104	saddle holder	1
25	G37-6-1605-103	spring cap	1	75	667-5-0160-003	retaining "C"	4
26	601-7-0008-009	steel ball	2	76	G37-6-3304-109	spindle	1
27	G37-6-1705-107	release valve lock nut	1	77	602-4-0025-017	snap pin	2
28	512-2-0100-012	spring	1	78	661-2-0100-014	nylon nut	2
29	*	o-ring	1	79	G36-6-4205-105	spindle	2
30	G37-6-1703-103	release valve	1	80	G36-3-5100-108	trust bearing	2
31	G37-6-1707-101	bolt	1	81	G36-6-4302-103	saddle seat (upper)	1
32	605-3-0080-102	spring washer	1	82	G37-6-3305-101	spindle	1
33	649-1-0079-105	screw	2	83	G36-6-4204-103	support pin	2
34	A24-6-8101-107	coupler - male	1	84	667-5-0250-004	retaining ring "C"	4
35	566-4-0070-202	pin	2	85	G36-6-4206-107	adjustable screw	2
36	G36-6-1809-102	release pedal	2	86	G36-6-2301-101	knob	2
37	513-5-0016-018	retaining pin	2	87	G37-6-4301-108	saddle seat (lower)	1
38	G36-4-2200-103	air inlet control valve	1	88	G37-6-1319-102	support bar	4
39	G36-6-2302-103	pipe connector	2	89	G37-4-5200-105	caster	2
40	G36-6-2300-109	air hose	1	90	G37-4-5201-107	caster - w/ brake	2
41	524-2-0123-108	spring	1	91	653-1-0080-02511	bolt	16
42	G36-3-2000-109	air motor assy.	1	92	G37-3-3300-103	base assy.	2
43	G36-3-1500-104	hydraulic cartridge	1	93	651-1-0127-100	hex. bolt	4
44	G36-6-1608-102	tube	1	94	605-3-0127-405	spring washer	4
45	G36-6-1607-100	tube	2	95	101-5-1602-100	safety valve screw	1
46	532-8-0008-108	filter	2	96	*	back-up ring	1
47	601-7-0012-000	steel ball	1	97	*	o-ring	1
48	666-5-0120-105	retaining ring "C"	1	98	*	seal	1
49	513-3-0500-020	washer	1				
50	*	cylinder	1				

* part is not available



Exploded Drawing
1st Edition © Mar. 2001