

PAGE LAYOUT						
FRONT PAGE	PAGE LAYOUT	COVER	PAGE 2	PAGE 3	PAGE 4	PAGE 5
	PAGE 6	PAGE 7	PAGE 8	PAGE 9	PAGE 10	PAGE 11
	PAGE 12	PAGE 13	PAGE 14	PAGE 15	PAGE 16	PAGE 17
BACK PAGE	PAGE 18	PAGE 19	PAGE 20	PAGE 21	PAGE 22	PAGE 23
	PAGE 24	PAGE 25	PAGE 26	PAGE 27	PAGE 28	PAGE 29
	PAGE 30	PAGE 31	PAGE 32			

NOTE : Finished size is 870 mm by 580 mm



Operating Instructions



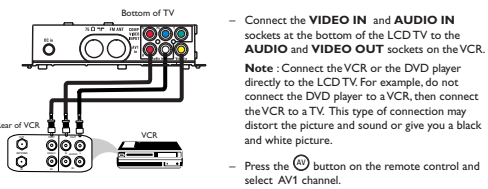
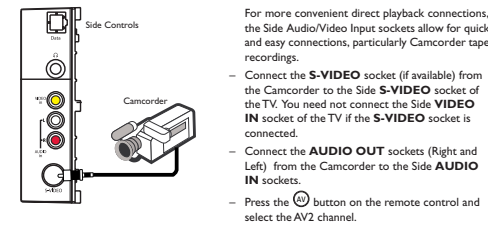
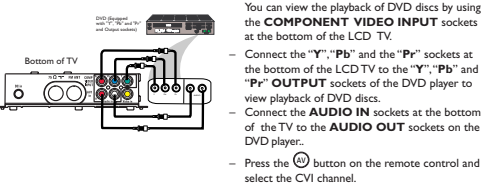
PHILIPS

3139 125 31831

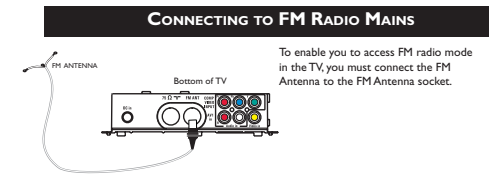
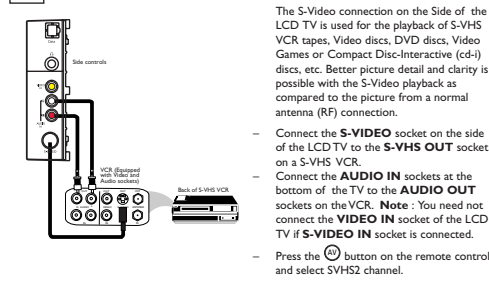
Safety Information/Precaution	3
Hooking Up Your TV Use / Care of Remote Control	4
Mounting Procedures for LCD TV	5
Connecting the Audio/Video Sockets (Playback)	6 - 7
Connecting the Headphone	7
Connecting the FM Radio Mains	7
Functions of Remote Control	8 - 9
Functions of TV Controls	10
Accessing the TV Main Menu and Sub-Menus	11
Accessing the TV Installation Menu	11
Choosing the Menu Language and Automatic Tuning of LCD TV Channels	11
Manual Tuning of LCD TV Channels	12
Selecting the Colour/Sound System	13
Fine Tuning of LCD TV Channels	14
Sorting of LCD TV Channels	15
Editing of LCD TV Channels	16
Naming of LCD TV Channels	17
Using the LCD TV Picture/Sound Menu	18
Accessing the TV Features Menu	19
Activating the Timer	19
Using the Mode Select	20
Activating the Child Lock	20 - 22
Using the Screen Formats	23
Using the Program List Feature	23
Activating the TV Smart Picture/Sound Control	24
Using the Teletext	25 - 26
Accessing the FM Radio Installation Menu	27
Language, Auto Store, Manual Store, Sort, Name	27
Using the FM Radio Sound Menu	28
Using the FM Radio Smart Sound Control	28
Accessing the FM Radio Features Menu	29
Activating the Timer	29
Using the Mode Select	30
Activating the Screensaver	30
Before Calling Service	31
Specifications	32

6 CONNECTING THE AUDIO/VIDEO SOCKETS (PLAYBACK)

You can view the playback of DVD discs /VCR tapes (Video Disc player, DVD player, camcorders, etc.) by using the AUDIO and VIDEO INPUT sockets at the bottom of the TV.



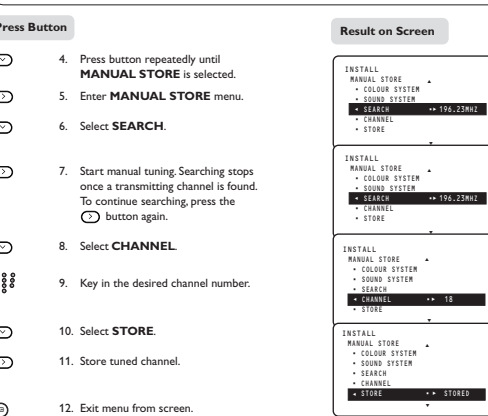
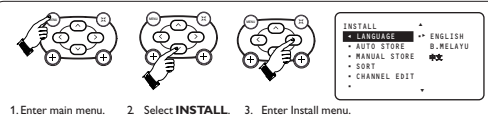
7 CONNECTING THE AUDIO/VIDEO SOCKETS (PLAYBACK)



12 ACCESSING THE LCD TV INSTALLATION MENU

MANUAL TUNING OF LCD TV CHANNELS

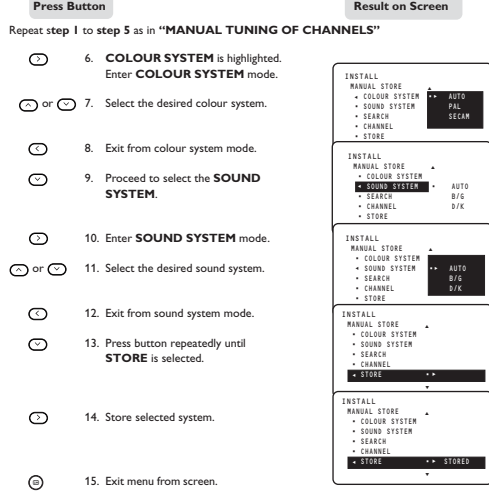
Manual tuning allows you to store each programmes manually.



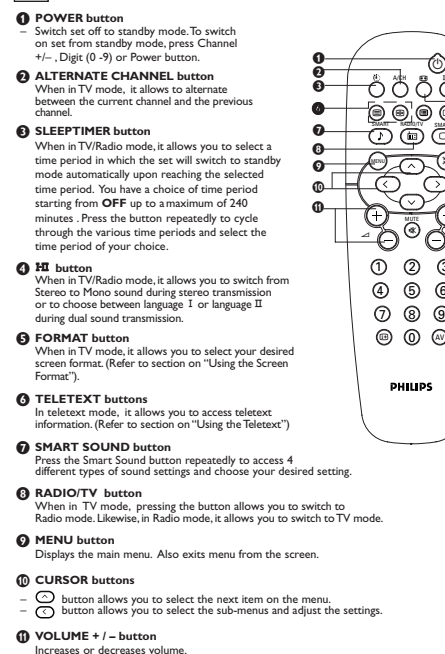
13 ACCESSING THE LCD TV INSTALLATION MENU

SELECTING THE COLOUR/SOUND SYSTEM

This feature allows you to select your desired COLOUR and SOUND system. If AUTO is selected, the respective colour and sound system will be automatically selected according to the transmission system. Note: Select your desired colour and sound system manually if reception is poor at AUTO mode. If you select colour system manually, sound system should also be selected manually and vice versa.



8 FUNCTIONS OF REMOTE CONTROL



3 SAFETY INFORMATION

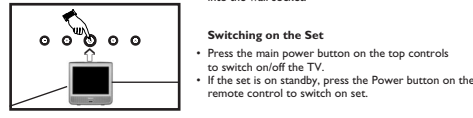
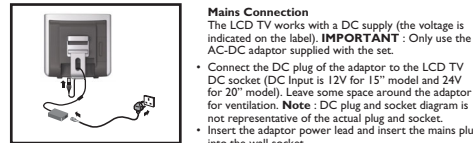
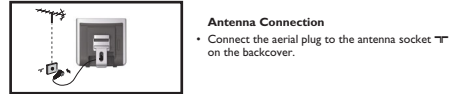
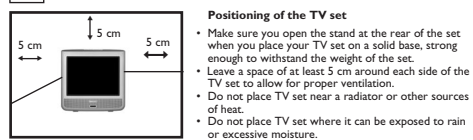
- Disconnect mains plug when:
 - the red light below the TV screen is flashing continuously,
 - cleaning the TV screen, never use abrasive cleaning agents,
 - there is a lightning storm,
 - the set is left unattended for a prolonged period of time.
- No naked flame sources, such as lighted candles, should be placed above or near the TV. Do not place your TV set under direct sunlight or heat.
- Leave at least 5 cm around each side of the TV set to allow for proper ventilation.
- Avoid placing your set (e.g. near the window) where it is likely to be exposed to rain or water.
- No objects (such as vases) filled with liquids should be placed above the TV so as to avoid dripping or splashing of liquids on the set.

PRECAUTIONS

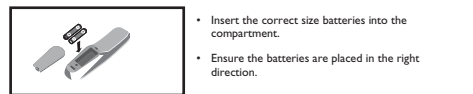
- Make sure you open the stand at the rear of the set when you place your TV set on a solid base, strong enough to withstand the weight of the set.
- Do not shift or move the set around when it is switched on.
- Do not connect any AC/DC adaptor to your set that does not originally come with the set. Only use recommended part that are approved by Philips manufacturer.
- Caution: Do not use cover or enclose the AC/DC adaptor with any objects like a cloth or box which might shorten the life time of the equipment.
- Do not touch, push or rub the surface with hard object.
- When the surface becomes dusty, wipe gently with absorbent cotton or other soft materials like chamois, soak with petroleum benzene. Do not use acetone, toluene and alcohol as it causes chemical damage to the polarizer.
- Wipe off saliva or water droplets as soon as possible. Long time contact with polarizer causes deformations and colour fading.
- Be careful of condensation at sudden temperature change. Condensation does damage to polarizer or electrical contact parts. After condensation fades, smear or spot will occur.

Recycling Directive - To minimise harm to the environment, the batteries supplied with the TV set do not contain mercury or nickel cadmium. If possible, when disposing the batteries, use recycling means available to you. Your TV set uses materials which are reusable or which can be recycled. To minimise the amount of waste in the environment, specialist companies recover used sets for dismantling and collection of reusable materials (contact your dealer).

4 HOOKING UP YOUR TV (BASIC CONNECTION)



USE/CARE OF REMOTE CONTROL

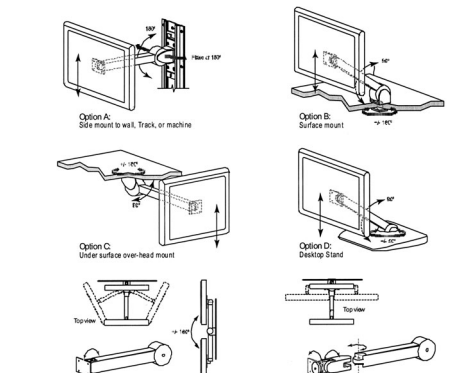


5 MOUNTING PROCEDURES FOR LCD TV

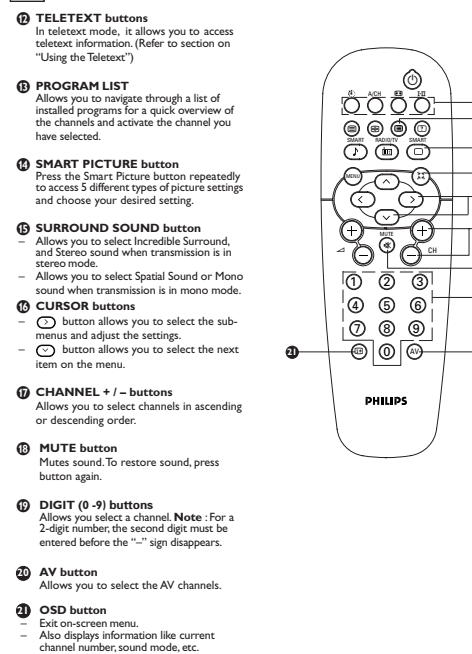
If you want to mount the LCD TV on any device, this set has four mounting interfaces fulfilling VESA specifications.



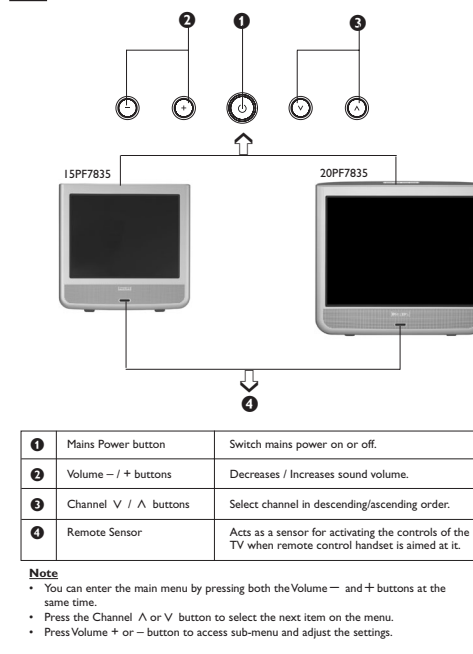
- Lay the LCD TV face-down on a flat surface with a cushion or other soft material to protect the screen.
 - Remove all cables connected on the TV.
 - Remove the two screws and then slide down the stand and remove stand from the LCD TV.
 - Screw in mounting plate. Reconnect all cables to the LCD TV.
- You are now ready to mount the device. Below is an example of adjusted ranges and mounting options (VESA compatible). Note: VESA arms are not included in the LCD TV set.



9 FUNCTIONS OF REMOTE CONTROL

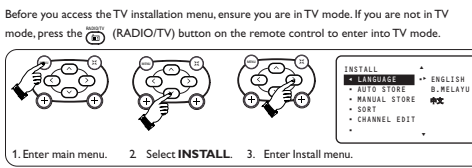
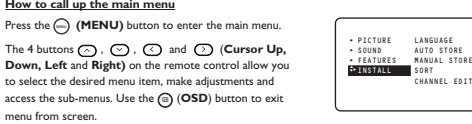


10 FUNCTIONS OF TV CONTROL



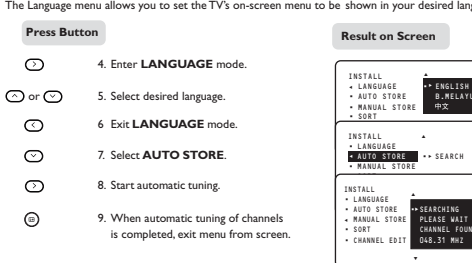
11 ACCESSING THE TV MAIN MENU AND SUB-MENUS

The TV main menu allows you to access to the Picture, Sound, Features and Install menus.



CHOOSING THE MENU LANGUAGE AND AUTOMATIC TUNING OF LCD TV CHANNELS

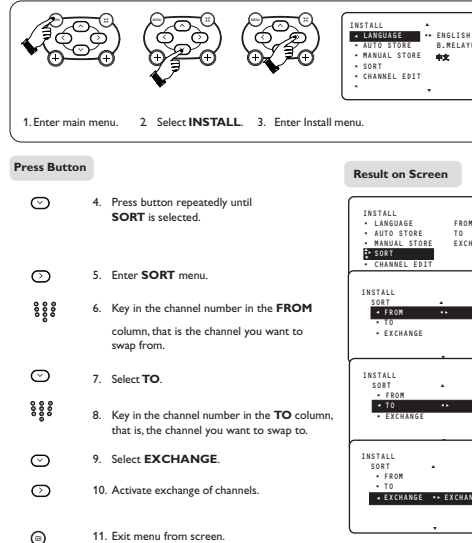
The Language menu allows you to set the TV's on-screen menu to be shown in your desired language.



15 ACCESSING THE LCD TV INSTALLATION MENU

SORTING OF LCD TV CHANNELS

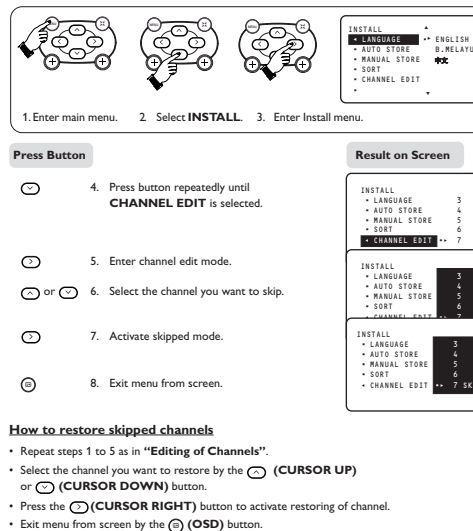
This menu allows you to change channel number of your choice for a particular station.



16 ACCESSING THE LCD TV INSTALLATION MENU

EDITING OF LCD TV CHANNELS

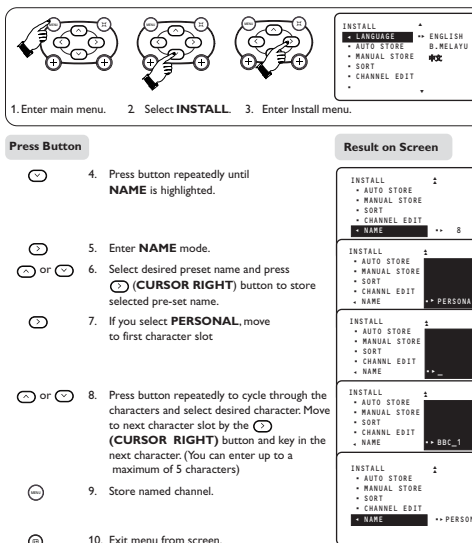
This feature allows you to edit or skip channels which have bad or weak TV signal or channels that you do not watch often. Note: Once a channel is skipped, you cannot have access to it by the CHANNEL +/- button. You can only access the channel by the DIGIT (0-9) button.



17 ACCESSING THE LCD TV INSTALLATION MENU

NAMING OF LCD TV CHANNELS

This feature allows you to enter a new name or modify an existing name of a channel for 40 programmes including external channels.



18 USING THE LCD TV PICTURE/SOUND MENU

The picture and sound menus allow you to make adjustments to the picture and sound. It also allows you to select and activate other features in the menu.
1. Press the **[MENU]** button to enter main menu.
2. Use the **[CURSOR UP/DOWN]** buttons to select the items on the **PICTURE/SOUND** menu.
3. Use the **[CURSOR LEFT/RIGHT]** buttons to select the sub-menus.

Picture menu items	Activities
Brightness	Increase or decrease brightness level.
Colour	Increase or decrease color level.
Contrast	Increase or decrease contrast level until lightest parts of the picture show good detail.
Sharpness	Increase or decrease sharpness level to improve detail in the picture.
NR (Noise Reduction)	Select "ON" to reduce "noisy" picture (little dots on picture) due to weak signal.
Contrast +	Select "ON" to allow you to optimise the total contrast for improved picture quality.
Sound menu items	Activities
Equalizer	Allows you a choice of different sound frequencies.
BALANCE	Increase or decrease to adjust balance level.
AVL (Auto Volume Leveller)	As variation in signal conditions can result in a sudden change in volume during commercial breaks or channel switching, selecting the "ON" function will enable the volume to remain at a standard volume level.
Incredible Surround	Allows you to select between Stereo, and Incredible Surround sound when transmission is in mono. Allows you to select between Spatial and Mono sound when transmission is in mono.

19 ACCESSING THE LCD TV FEATURES MENU

ACTIVATING THE TIMER
The Timer feature allows you to set the timer to switch to another channel at a specified time while you are watching another channel or when the TV is on standby mode. **Note:** For the timer to function, the set must be switched off 30 seconds before the timer is activated. A message indicating the time left for the channel switch will appear on the screen. To disable the channel switch, press any button on the remote control. Once the set is switched off, the timer is disabled.

Press Button
1. Enter into main menu and select **FEATURES**.
2. Enter **FEATURES** menu.
3. Enter **TIMER** menu.

Result on TV Screen
FEATURES: TIMER: 12:30
TIME: 12:30
START TIME: 12:30
STOP TIME: 12:30
MODE SELECT: TV

TIME: Use the **[UP]** buttons to key in the current time to enable functioning of the timer feature. After keying in the time, exit **TIME** mode by the **MENU** button.
START TIME: Use the **[UP]** buttons to key in the time you want the channel to be switched on. After keying in the time, exit **START TIME** mode by the **MENU** button.
STOP TIME: Use the **[UP]** buttons to key in the time you want the program to be switched off. After keying in the time, exit **STOP TIME** mode by the **MENU** button.
CHANNEL: Use the **[UP]** buttons to key in the channel number.
ACTIVATE: Use the **[ON]** button to select between the **ONCE** and **DAILY** mode to activate the timer.
DISPLAY: Use the **[ON]** button to select the **ON** option to display current time on screen.

20 ACCESSING THE LCD TV FEATURES MENU

USING THE MODE SELECT
This feature allows you to switch from **TV** mode to **FM RADIO** mode.
Press Button
1. Enter into main menu and select **FEATURES**.
2. Enter **FEATURES** menu.
3. Select **MODE SELECT**.
4. Enter **MODE SELECT** menu.
5. Enter **FM RADIO** mode.

Result on TV Screen
FEATURES: MODE SELECT: FM RADIO
MODE SELECT: FM RADIO
MODE SELECT: FM RADIO

Note: You can also access directly the **FM RADIO** mode by the **[FM]** button.

ACTIVATING THE CHILD LOCK (ACCESS CODE)

The Child Lock feature allows you to lock channels on your TV. Top Controls to prevent your children from watching programmes you deem undesirable. **Note:** You cannot have access to the locked channels via the top controls of the TV set once the channels are locked. You can only have access to the locked channels via the remote control. Keep the remote control out of reach so as to prevent your children from having access to it.

Press Button
1. Enter into main menu.
2. Select **FEATURES**.
3. Enter **FEATURES** menu.
4. Select **CHILD LOCK**.

Result on TV Screen
FEATURES: CHILD LOCK: ON
CHILD LOCK: ON
CHILD LOCK: ON

21 ACCESSING THE LCD TV FEATURES MENU

.....ACTIVATING THE CHILD LOCK (ACCESS CODE)
Press Button
5. Enter **ACCESS CODE** mode.
6. Key in access code **0711** (0711 is the default access code). A message **INCORRECT** will appear.
7. Key in **0711** the second time. When the message **CORRECT** appears, the **CHILD LOCK** menu is now accessible. You can now proceed to change the access code of your choice.

Result on TV Screen
FEATURES: ACCESS CODE: 0711
ACCESS CODE: INCORRECT
ACCESS CODE: 0711
ACCESS CODE: CORRECT

ACTIVATING THE CHILD LOCK (CHANGE CODE)

Press Button
8. Select **CHANGE CODE**.
9. Enter **CHANGE CODE** mode.
10. Key in the access code of your choice.
11. Confirm access code. When the new code is confirmed, the message **CORRECT** will appear.
12. Exit menu from screen.

Result on TV Screen
FEATURES: CHANGE CODE: 0711
CHANGE CODE: 0711
CHANGE CODE: 0711

Note: After you have exit menu from screen and you want to enter child lock menu again, you need to key the new access code only once. If you have forgotten the new access code, key in 0711 twice to enter the child lock menu. Upon entering the child lock menu, you can proceed to change code again.

22 ACCESSING THE LCD TV FEATURES MENU

ACTIVATING THE CHILD LOCK (LOCK CHANNEL)
Repeat steps 1 to 6 as in "Activating the Child Lock (Access Code)" on page 20 and page 21.
Press Button
7. Enter **LOCK CHANNEL** mode.
8. Select the channel you want to lock.
9. Activate blocking of channel. A keylock symbol will appear beside the channel number indicating that it is locked.
10. Exit menu from screen.

Result on TV Screen
FEATURES: LOCK CHANNEL: 2
LOCK CHANNEL: 2
LOCK CHANNEL: 2

ACTIVATING THE CHILD LOCK (CLEAR ALL)

To unlock channels that you have locked, enter the Child Lock menu and activate the **CLEAR ALL** mode.
Repeat steps 1 to 6 as in "Activating the Child Lock (Access Code)" on page 20 and page 21.
Press Button
7. Press button repeatedly until **CLEAR ALL** is selected.
8. Activate clearing of all locked channels.
9. Exit menu from screen.

Result on TV Screen
FEATURES: CLEAR ALL: ON
CLEAR ALL: ON
CLEAR ALL: ON

Note: You can also unlock individual channel by the **LOCK CHANNEL** menu.
• Repeat step 1 to 7 as in "Activating the Child Lock (Lock Channel)".
• Select the channel you want to unlock by the **[UP]** buttons.
• Press the **[ON]** button to unlock channel (the keylock symbol will disappear).

23 USING THE SCREEN FORMAT

You can have a choice of different formats for your viewing pleasure, namely: - 4:3 mode, **EXPAND 4:3** mode and **COMPRESS 16:9** mode.
Press the **[FORMAT]** button repeatedly to toggle the different screen formats and select your desired Screen Format.
When to use the Screen Formats 4:3 format
Select the 4:3 format if you want to display the 4:3 picture using the full surface of the screen.
EXPAND 4:3 format
Select the EXPAND 4:3 format if you want to expand movie images recorded in the letterbox format. When this format is selected, the black horizontal bars at the top and bottom are expanded thus filling up the entire TV screen.
COMPRESS 16:9 format
Select the COMPRESS 16:9 format if you want to compress full screen movie images into letterbox format. When this format is selected, black horizontal bars can be seen at the top and bottom of the TV screen.

USING THE PROGRAM LIST FEATURE

Program listing feature allows you to navigate through a list of installed programmes for a quick overview of the channels and activate the channel you have selected.
1. Press the **[PROGRAM LIST]** button to display the list of installed programmes. The current channel is highlighted.
2. Press the **[LEFT]** or **[RIGHT]** button to cycle through the programme list and highlight the channel number you want to activate.
3. Press the **[ON]** button to activate the channel you have selected.
4. Press the **[ON]** button to exit menu from screen.

24 ACTIVATING THE LCD TV SMART PICTURES/SOUND COBTROLS

SMART PICTURE feature offers you a choice of 5 picture settings, namely, **RICH**, **NATURAL**, **SOFT**, **PERSONAL** and **MULTIMEDIA**.
SMART SOUND feature offers you a choice of 4 sound settings, namely, **THEATRE**, **MUSIC**, **VOICE** and **PERSONAL**.
Press **[SMART PICTURE]** or **[SMART SOUND]** button repeatedly to cycle through the settings to select your desired mode.
Definition of Picture Settings
PERSONAL: Picture settings are set to your preference.
RICH: Emphasize very vibrant colours. (Suitable for AV mode in brightly-lit room)
NATURAL: Emphasize original colours.
SOFT: Emphasize "warm" colours. (Suitable for "dimly-lit room" condition and gives cinema-like effect when light is switched off).
MULTIMEDIA: Emphasize "soft" colours. (Suitable for playing computer games, surfing, etc.)
Note: The **PERSONAL** setting is the setting that you set up using the Picture menu in the main menu. This is the only setting in the Smart Picture settings that can be changed. All the other settings are pre-set at the factory.
The values shown in the Picture/Sound Setting diagrams are sample values only. Your television's values may vary and display different numbers.
Definition of Sound Settings
PERSONAL: Sound settings are set to your preference.
VOICE: Emphasize high tone. (Treble boosted)
MUSIC: Emphasize low tone. (Bass boosted)
THEATRE: Emphasize sensation to action. (Bass and Treble boosted)
Note: The values shown in the Picture/Sound Setting diagrams are sample values only. Your television's values may vary and display different numbers.

25 USING THE TELETEXT

If a TV channel broadcast contains teletext information, each channel that broadcasts teletext transmits a page (index page) with information on how to use the teletext system, usually on page 100. The system transmitted is indicated in the option line at the bottom of the screen.
1. On/Off teletext and Superimpose teletext page over TV programme.
2. Selecting a teletext page.
3. Accessing teletext page.
4. Direct Access to an item or corresponding pages.
Press the button once to switch on teletext display. (A channel in which teletext is being transmitted must be selected). Press the button the second time to superimpose the teletext page over the TV programme. Press the button the third time to exit teletext mode.
Key in the required teletext page (2 digits). The page number is displayed at the top left hand corner of the screen. When the teletext page is located, the counter stops searching. If the counter keeps searching, it means that the page is not available for selection. If you make a mistake in keying the page number, you have to complete keying the 3-digit number before re-keying the correct page number.
Press the **CHANNEL+** button to display the next page and the **CHANNEL-** button to display the previous page.
The 4-colour buttons allow you to access directly an item or corresponding pages.

26 FUNCTIONS OF REMOTE CONTROL

Hold: A selected page sometimes contains a few sub-pages. The sub-page will automatically move to the next sub-page after about 20 seconds. Press the button once to hold page and the second time to release holding of page.
Reveal/Conceal: Press the button once to reveal hidden information (solutions to puzzles, riddles, etc.). Press the button the second time to conceal information. This button is applicable only to teletext page with puzzles, riddles, etc.)
How to select your favourite page
This feature allows you select 4 of your favourite or most commonly viewed page and stored them in the favourite page selection. You can then access directly your favourite page by the colour buttons without having to key in the page number.
1. Press the **[TELETEXT ON/OFF]** button to enter teletext mode.
2. Press the **[MENU]** button to enter favourite page selection. Note: An alphabet "F" appears at the left hand bottom corner followed by the colour page numbers indicating that it is in favourite page mode.
3. Key in your favourite page by the **[Digit 0-9]** buttons.
4. Press the **[OSD]** button followed by your desired colour button to store your favourite page.
5. Repeat step 3 to 4 to select and store other favourite pages.
6. To exit Favourite page mode, press **[MENU]** button.
7. Press the **[TELETEXT ON/OFF]** button twice to exit teletext mode.

27 ACCESSING THE FM RADIO INSTALLATION MENU

This TV also provides you with the **FM RADIO** for your listening pleasure. To enable you to access the **FM RADIO** mode, you must connect the cable from FM Antenna socket to the FM Radio mains.
Press Button
1. Enter into FM Radio mode.
2. Enter **FM RADIO** main menu.
3. Press button repeatedly until **INSTALL** is highlighted.
4. Enter **INSTALL** menu.
5. Press button repeatedly to scroll through the available FM Mode On-screen options. These options include **LANGUAGE**, **AUTO STORE**, **MANUAL STORE**, **SEARCH** and **NAME**. Use the **Cursor**-Up, Down, Right and Left buttons to access these options and make your desired selection or adjustments.
LANGUAGE – Choose to view the On-screen menu in your desired language.
AUTO STORE – Allows you to search the FM antenna signal and store any FM channel it finds in the TV's memory.
MANUAL STORE – Allows you to manually tune any available FM signals.
SEARCH – Allows you to rearrange your stored FM stations in the order you prefer.
NAME – Allows you to apply a name to your programmed FM radio stations. Add your own personal name or choose one from the predefined list.
6. Adjust or select items within the highlighted feature sub-menu.
7. Exit menu from screen.

28 USING THE FM RADIO SOUND MENU

The Sound menu allows you to make adjustments to the sound.
Note: Ensure you are in **FM RADIO** mode before you access **FM RADIO** main menu.
1. Press **[FM RADIO]** button to enter **FM RADIO** main menu. **SOUND** option is highlighted.
2. Press **[ON]** button to enter the **SOUND** menu.
3. In the **SOUND** menu, press **[UP]** or **[DOWN]** button to adjust level or select desired setting.
4. Use the **[LEFT]** or **[RIGHT]** buttons to select the various **SOUND** menu items and make your desired adjustments and access the sub-menu.
5. Press **[ON]** button to exit menu from screen.

USING THE FM RADIO SMART SOUND CONTROL

FM RADIO SMART SOUND feature offers you a choice of 5 sound settings, namely, **ROCK**, **POP**, **CLASSICAL**, **JAZZ**, and **PERSONAL**.
1) Press the **[FM RADIO]** button to enter **FM RADIO** mode.
2) Press the **[SMART SOUND]** button repeatedly to cycle through the various settings and select your desired sound mode.
3) Press the **[OSD]** button to exit On-Screen display.

30 ACCESSING THE FM RADIO FEATURES MENU

USING THE MODE SELECT
This feature allows you to go into **TV** mode. **Note:** Ensure you are in **FM RADIO** mode before you access **FM RADIO** main menu.
1. Enter **FM RADIO** main menu. 2. Select **FEATURES**. 3. Enter **FEATURES** menu.
Press Button
4. Select **MODE SELECT**.
5. Enter **MODE SELECT** menu.
6. Enter selected mode.
Note: You can also access directly the **TV** mode by the **[TV]** button.
ACTIVATING THE SCREENSAVER
Repeat Steps 1 to 3 as in "Using the Mode Select".
4. Select **SCREENSAVER**.
5. Select **ON** option to activate the screensaver mode.
6. Exit menu from screen.

31 BEFORE CALLING SERVICE

Below is a list of frequently occurring problems. Before you call for service, try these simple checks. Some of these problems can easily be rectified if you know what to do.
Symptom
No power
No picture
Good picture but no sound
Good sound but poor colour or no picture
Snowish picture and noise
Horizontal dotted lines
Double images or "Ghost" images
TV not responding to remote control handset
An after-image appears
An after-image remains after the power has been turned off
Cannot access FM radio
What you should do
• Check whether adaptor is connected properly into socket.
• Check whether the TV's AC power cord is plugged into the mains socket. If there is still no power, disconnect the plug. Wait for 60 seconds and re-insert plug. Switch on the TV again.
• Check whether transmission is in TV mode. Press **[RADIO/TV]** button on remote control to confirm.
• Check the antenna connection at the bottom of the TV.
• Possible TV station problem. Try another channel.
• Try increasing the volume.
• Check whether the sound is muted. If it is, press the **Mute** button on the remote control to restore sound.
• Check whether your headphone is not connected.
• Try increasing the contrast and brightness setting.
• Check the antenna connection at the bottom of the TV.
• Possible electrical interference e.g. from hairdryer, vacuum cleaner, etc. Switch off appliances.
• Possible poor positioning of antenna. Using a highly directional antenna may improve reception.
• Check life span of batteries of remote control handset.
• Aim remote control handset directly at remote control sensor lens on the TV.
• If an image remains on the screen for an extended period of time, it may be imprinted on the screen and will leave an after-image. This usually disappears after a few hours.
• This is characteristic of liquid crystal and is not caused by a malfunction or deterioration of the liquid crystal. This after-image will disappear after a set amount of time.
• Check whether the FM Antenna socket is connected to the FM radio mains properly.

32 SPECIFICATIONS

	15PF7835	20PF7835
Screen size	390 mm	510 mm
Audio Output	2 X 3 W	2 x 5 W
TV System	NTSC M PAL B/G PAL D/K PAL I SECAM B/G SECAM D/K SECAM K1	
Playback System	NTSC 3.58, NTSC 4.43, PAL 60	
Set Dimensions		
Length	377 mm	477 mm
Height	130 mm	141 mm
Depth	361 mm	435 mm
Net Weight of Set with stand (approximate)	4.7 kg	7.8 kg

Note: For Operating Voltage, Frequency, Power Consumption and Version Number, refer to the type number on mains adaptor.