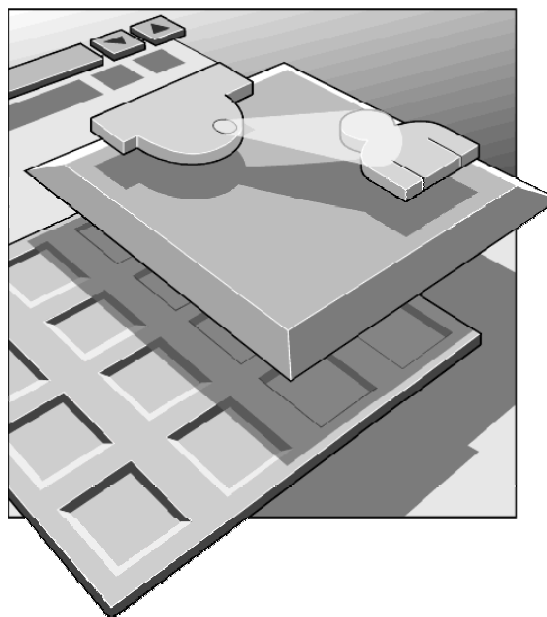


# DCN Next Generation Automatic Camera Control



Security Systems

en | Software User Manual  
LBB 4162/00  
LBB 4188/00

**BOSCH**

## About this manual

This user manual is divided into three chapters. Chapters 1 and 2 provide background information and chapter 3 provides detailed user information as follows:

- Chapter 1 - Automatic Camera Control - containing general information about the Automatic Camera Control software, and the two different versions available.
- Chapter 2 - Getting Started - containing details about installing the stand-alone version of the software, and information about starting the application from the Startup screen and from a shortcut icon. There is also a description of the Help facility.
- Chapter 3 - Using Automatic Camera Control - containing details about configuring the software, assigning cameras to seat/unit numbers, specifying camera type, editing camera IDs, importing and exporting camera settings and printing Camera Installation files.

## Manual conventions

For clarity this user manual uses consistent styles, symbols and typographical conventions. They are:



### Note

General notes are contained within rules and indicated with this symbol at the left margin. Notes are used to draw attention to special actions or information.



### Caution

A caution is contained within rules and indicated with this symbol at the left margin. Cautions are used to draw attention to actions or commands that could lead to a loss of information or damage to equipment



### Tip

A tip is contained within a box and indicated with this symbol at the left margin. Tips are used to provide supplementary information that may make an action quicker or easier to carry out.

- An action (to be carried out by the user) is shown with a larger round bullet mark.

## Typographical conventions

The following typographical conventions (text styles) are used in this manual:

- **Typed input** - information to be typed in using the keyboard is shown as:  
***Filename***
- **Single key** - input via a single key (or keys) on the keyboard is shown as:  
***<enter>, <shift>, etc.***
- **Multiple keys** - input via a combination of keys pressed together is shown as:  
***<ctrl>+<p>, <alt>+<f4>***
- **Screen text** - information that appears on screen is shown as:  
***'Choose Startup Modules:'***

## Hyperlinks

This manual is also available as a digital document in the Adobe Portable Document Format (PDF). All references to pages, figures, tables, etc. in this digital document contain hyperlinks to the referenced location.

## Table of contents

<b>1</b>	<b>Automatic camera control</b> .....	<b>4</b>		
1.1	About Automatic Camera Control .....	4		
1.1.1	What is Automatic Camera Control? .....	4		
1.1.2	Camera Control in congress applications .....	4		
1.2	Stand-alone and PC controlled system versions .....	4		
1.2.1	Differences between stand-alone and PC controlled systems .....	4		
1.3	Overview of Automatic Camera Control .....	4		
1.3.1	Systems using Control PC .....	4		
1.3.2	Stand-alone systems .....	4		
<b>2</b>	<b>Getting started</b> .....	<b>5</b>		
2.1	Starting the Automatic Camera Control software .....	5		
2.1.1	The Startup screen .....	5		
	Selecting an installation (and a names) file .....	5		
	The Automatic Camera Control icon .....	5		
2.2	Installing the stand-alone version .....	5		
2.2.1	PC requirements and settings .....	5		
2.2.2	Installing the stand-alone software .....	5		
2.3	Using Help .....	6		
2.3.1	The Help menu .....	6		
2.3.2	Index .....	6		
2.3.3	Keyboard .....	6		
2.3.4	Commands .....	6		
2.3.5	Procedures .....	6		
2.3.6	Glossary .....	6		
2.3.7	Using Help .....	7		
2.3.8	About .....	7		
<b>3</b>	<b>Using Automatic Camera Control</b> .....	<b>8</b>		
3.1	The camera installation main window .....	8		
3.1.1	The menu bar .....	9		
3.2	Assigning cameras to seat/unit numbers .....	9		
3.2.1	Specifying the overview camera .....	10		
3.2.2	Selecting a seat (or unit) number .....	10		
3.2.3	Selecting camera number .....	10		
3.2.4	Editing camera ID .....	10		
3.2.5	Specifying camera type .....	11		
3.2.6	Entering seat (or unit) text .....	11		
3.2.7	Inserting seat (or unit) numbers and camera settings .....	12		
3.2.8	Editing entries in the 'Assignments:' list .....	13		
3.2.9	Deleting a camera assignment from the 'Assignments:' list .....	13		
3.3	System setting .....	13		
3.3.1	Screenline usage .....	14		
3.3.2	Double seat (or unit) text .....	14		
3.3.3	Camera override .....	14		
3.3.4	Camera movement time .....	14		
3.3.5	Number of audience monitors .....	14		
3.4	The file menu .....	15		
3.4.1	Camera activity .....	15		
3.4.2	Clear all .....	15		
3.4.3	Printing .....	15		
3.4.4	Importing and exporting Camera Installation files .....	15		
3.4.5	Importing Camera Installation files .....	16		
3.4.6	Exporting Camera Installation files .....	16		
3.5	Exiting Automatic Camera Control .....	16		
3.5.1	Temporarily exiting Automatic Camera Control .....	16		
3.5.2	Permanently exiting Automatic Camera Control .....	17		

# 1 Automatic camera control

## 1.1 About Automatic Camera Control

### 1.1.1 What is Automatic Camera Control?

The Automatic Camera Control software is designed to interface DCN Next Generation congress systems with Bosch Allegiant switchers or a single Bosch AutoDome camera. It selects fixed or pre-positioned cameras to be activated to display the current active speaker at a conference.

### 1.1.2 Camera Control in congress applications

When a chairman's or delegate's microphone is activated on the equipment, the camera assigned to that position is activated. When no microphones are active, an overview camera is automatically selected. The image can be displayed on hall displays or other monitors together with information about the current speaker if required (such as delegate identification). The system operator has a monitor, which also displays information about which camera is active. This system provides an extra dimension to congress and conference proceedings.



#### Note

The Allegiant video control switcher cannot display graphic characters that are used in certain non-European and non-US languages such as Chinese.

## 1.2 Stand-alone and PC controlled system versions

There are two versions of DCN Automatic Camera Control software:

- PC controlled version is for systems with a CCU and a control PC. The activation and installation of the cameras is integrated into the PC control software.
- Standalone version is for stand-alone systems without PC control.

### 1.2.1 Differences between stand-alone and PC controlled systems

The main difference is that the stand-alone version operates without a control PC. A PC needs only be connected for programming the CCU. The PC running the stand-alone software is disconnected from the CCU after the software has been used, but in a DCN Next Generation system with control PC, the PC remains connected to the CCU.

There are also minor differences in functionality between the two software versions. These are described elsewhere in this manual.

## 1.3 Overview of Automatic Camera Control

An overview of the procedure for using the Automatic Camera Control software is given below.

### 1.3.1 Systems using Control PC

The Automatic Camera Control software is installed on the control PC. The control PC is connected to the CCU, which in turn is connected to delegates' contribution units. The CCU is also connected to a single AutoDome camera or an Allegiant video switcher, which in turn is connected to the cameras and monitors in the system. After connecting the system, the Automatic Camera Control software is used to configure the cameras. The control PC remains connected to the CCU while the system is being used.

### 1.3.2 Stand-alone systems

In stand-alone systems, a temporary PC connection to the CCU and AutoDome camera or Allegiant video switcher is needed during camera installation. The numbers assigned to the contribution units during system initialisation are coupled to camera positions. After configuration is complete, the PC is disconnected from the system, and a direct connection from the CCU to the AutoDome camera or the Allegiant video switcher is made. Operational camera control by the CCU is enabled during installation. To disable operational camera control, it is necessary to re-connect the installation PC and open the Camera Installation file.



#### Note

For details on connections refer to the DCN Next Generation Installation and User Instructions.

## 2 Getting started

### 2.1 Starting the Automatic Camera Control software

#### 2.1.1 The Startup screen

The Automatic Camera Control program is started from the Startup screen (shown below).

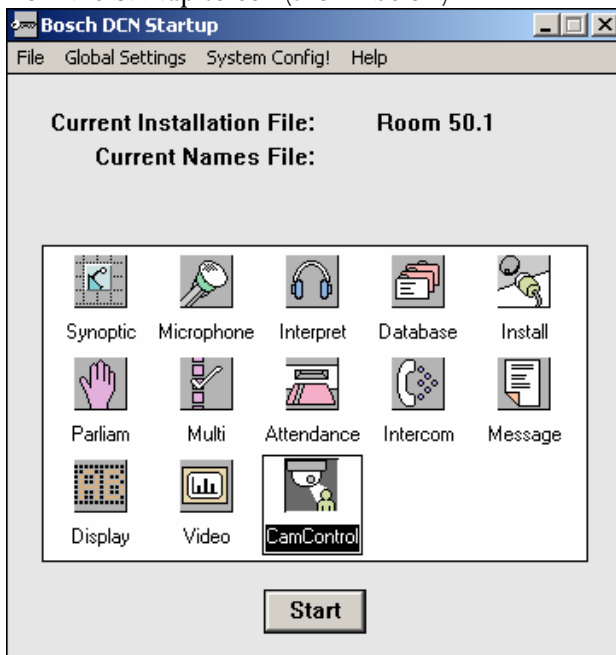


Figure 1 The Startup screen.

#### **i** Note

For starting the Startup program from an icon in the desktop, refer to the Startup user manual.

#### **i** Note

The standalone version of the Automatic Camera Control software is started from the windows '**Start Programs**' menu.

The Automatic Camera Control PC controlled version uses two user-created files that contain important information about the installed hardware configuration and about delegates' names. These files are:

- **Installation file** - containing information about channel assignment and the numbers that have been assigned to all microphones connected to the system. These seat numbers are assigned using the System Installation software module LBB 4185/00.

- **Names file** - containing information about the name, seat number and other conference and personal details of participating delegates. Names files are created using Delegate Database.

The seat numbers defined in System Installation are used to assign cameras connected to the system. The seat numbers are assigned using the System Installation software (LBB4185).

#### **i** Note

An installation file must be open before camera installation is possible. However, the Automatic Camera Control software can be started without an installation file being open.

#### **i** Note

The stand-alone version of the Automatic Camera Control software does not use other software modules.

#### Selecting an installation (and a names) file

For details on selecting an installation (and a names) file, please refer to the Startup user manual (LBB 4190).



#### The Automatic Camera Control icon

For details on the Automatic Camera Control icon and how to start Automatic Camera Control from Startup, please refer to the Startup user manual (LBB 4190).

### 2.2 Installing the stand-alone version

#### 2.2.1 PC requirements and settings

For information about PC requirements and settings, please refer to the DCN Next Generation Installation and User Instruction.

#### 2.2.2 Installing the stand-alone software

To install the stand-alone version of the Automatic Camera Control software:

- Insert the CDROM with type number LBB 4162/00.
- Select '**Run...**' from the '**Start**' menu on the Windows desktop.
- Type **d:\setup** (where **d** is the CDROM) on the command line which appears.
- Follow the on-screen instructions.

When installation has been successfully completed, a new program group called Standalone Camera

Control Installation is created. Please refer to paragraph 2.1, for information about starting the module.



#### Note

Before beginning camera installation, it is important to make sure that the Allegiant video switcher, system cameras and monitors are properly connected and installed. For more information, refer to the DCN Next Generation Installation and User Instructions.

## 2.3 Using Help

### 2.3.1 The Help menu

The **'Help'** menu in the title bar contains commands for an on-screen help facility. This help facility contains information on all commands in the **'File'** menu, on which keyboard keys are functional, a description of how to use the software, information on how to use the help facility itself, plus an index and a glossary of terms. All information contained in this user manual is also found in the **'Help'** facility.

The **'Help'** facility contains the following options:

- Index
- Keyboard
- Commands
- Procedures
- Glossary
- Using Help
- About...

### 2.3.2 Index

To access the index:

- Select the **'Help'** menu and click on **'Index'**.

A full list of subjects covered by the help facility is given in alphabetical order. For more information on any subject contained in the index:

- Click on the required subject in the index.

An on-screen page with the requested information will appear.

### 2.3.3 Keyboard

This gives information on which keys on your keyboard can be used with the software. This includes using keys to activate menu items, to move around in dialogue boxes, for short cuts, and to select options from the main window. To access the **'Keyboard'** help facility:

- Select the **'Help'** menu and click on **'Keyboard'**.

A list of different key types is given. For more information on any key type contained in the list:

- Click on the required key type in the list.

An on-screen page with the requested information will appear.

### 2.3.4 Commands

This gives information on all menu options, covering the **'File'**, **'Edit'**, **'View'**, **'Settings'** and **'Help'** menus.

To access the **'Commands'** help facility:

- Select the **'Help'** menu and click on **'Commands'**.

A list of menu groups is given. For more information on any menu group contained in the list:

- Click on the required menu group in the list.

A list of options in the selected menu group is given. For more information on any option contained in the list:

- Click on the required option in the list.

An on-screen page with the requested information will appear.

### 2.3.5 Procedures

This gives information on how to use the software. To access the **'Procedures'** help facility:

- Select the **'Help'** menu and click on **'Procedures'**.

A list of topics is given. For more information on any topic contained in the list:

- Click on the required topic in the list.

A list of options for the selected topic is given. For more information on any option contained in the list:

- Click on the required option in the list.

An on-screen page with the requested information will appear.

### 2.3.6 Glossary

To access the glossary:

- Select the **'Help'** menu and click on **'Glossary'**.

A list of terms used in the help facility is given in alphabetical order. For more information on any term contained in the glossary:

- Click on the required subject in the index.

A window with the requested information will appear.

### 2.3.7 Using Help

This gives information on how to use the help facility. To access the *'Using Help'* facility:

- Select the *'Help'* menu and click on *'Using Help'*.

A list of topics is given. For more information on any topic contained in the list:

- Click on the required topic in the list.

A list of options for the selected topic is given. For more information on any option contained in the list:

- Click on the required option in the list.

An on-screen page with the requested information will appear.

### 2.3.8 About

This provides software release information. To display the *'About...'* window:

- Select the *'Help'* menu and click on *'About ...'*.

The following window appears:

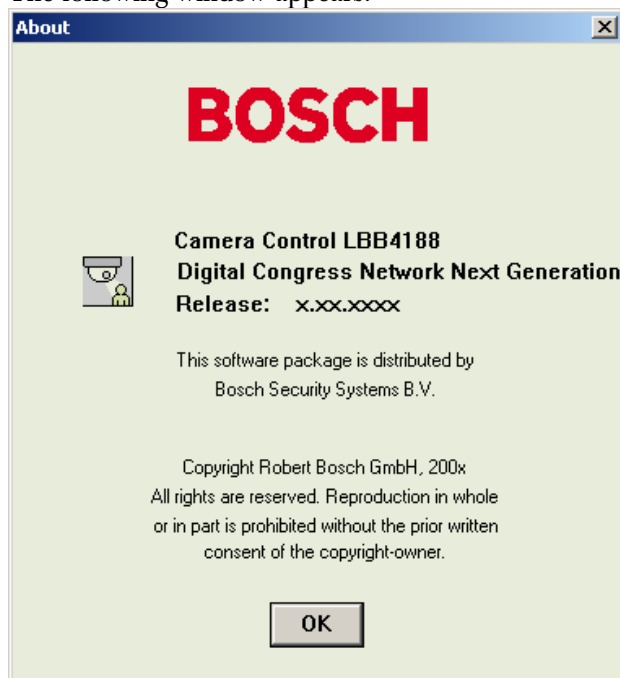


Figure 2 The *'About'* window

To remove this window:

- Click on the *'OK'* push button.

## 3 Using Automatic Camera Control

### 3.1 The camera installation main window

The Camera Installation main window is used to assign fixed cameras and camera positions (on preposition cameras) to DCN Next Generation units.

There are two main types of camera recognized by the Automatic Camera Control software. Fixed cameras are positioned before the conference begins, and they remain in the same position during the conference. Dome cameras can adjust their position automatically in response to conference activity. For example, a dome camera normally has several prepositions, determined during configuration, each covering a different delegate or group of delegates. The camera will automatically change position to cover the delegate who is speaking. The Camera Installation window at startup is shown below.

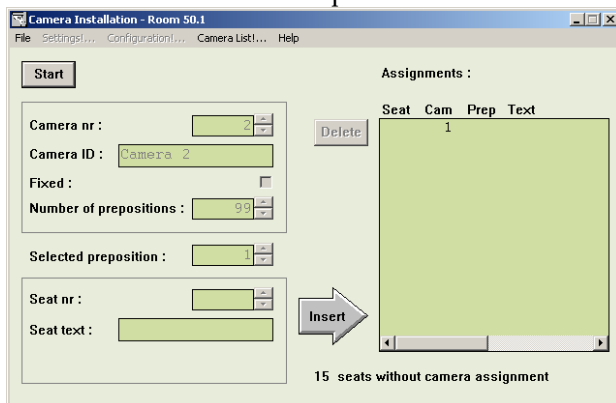


Figure 3 The Camera Installation window (at startup)



#### Note

The System Installation file is required for using Automatic Camera Control with a software-controlled DCN Next Generation system. This file is loaded from the Startup screen. In the example used in this manual, 10 seats have been assigned in the System Installation file.



#### Note

In the stand-alone version of the software, 'seats' are referred to as 'units'.

The Camera Installation window contains the following elements:

- **Start/Stop** push button. This is used to enter and exit Installation mode.

- Camera specification edit fields for entering camera number, camera ID, and the type of camera (fixed or preposition)

When installation mode is entered (by pressing the **Start** push button) for the first time i.e. when no cameras have yet been assigned to seat numbers, or when camera 1 is selected from the '**Assignments**' list the installation window appears as follows:

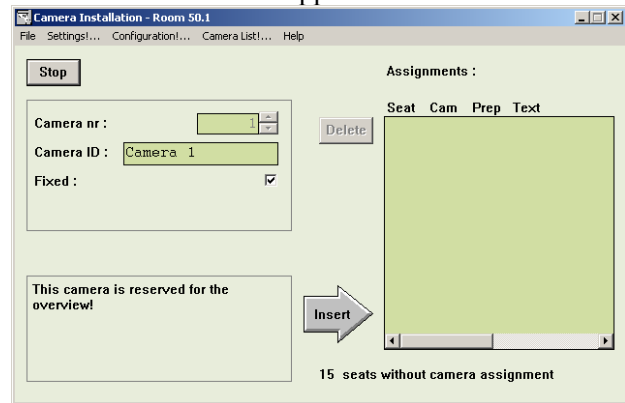


Figure 4 The Camera Installation window



#### Note

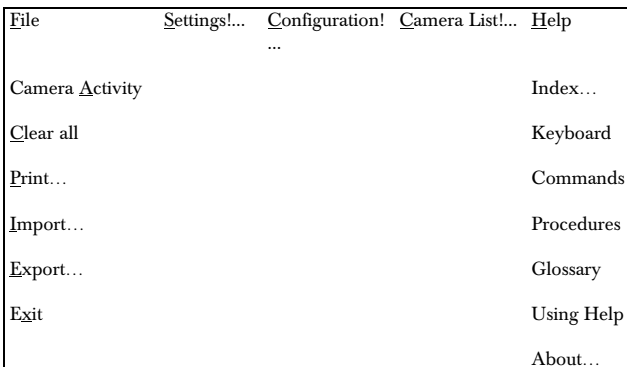
If a camera with prepositions (such as a dome camera) is selected, the number of prepositions available, and the selected preposition is also entered in this area.

- '**Selected preposition:**' edit field (only displayed if the camera is a preposition type)
- Seat (or unit) edit fields for selecting a seat (or unit) number and entering one or two lines of seat/unit text
- '**Insert**' button for entering the camera and unit assignments specified (it then appears in the '**Assignments**' list on the right side of the main window)
- '**Delete**' button for removing camera and unit assignments from the '**Assignments**' list.
- '**Assignments**' list for displaying assigned camera data.



### 3.1.1 The menu bar

All menu options referred to in this user manual are contained within the menu bar located under the title bar at the top of the Camera Installation window. The full list of menu options is as follows:



### 3.2 Assigning cameras to seat/unit numbers

**Note**  
Before you start the installation process make sure that the configuration is correctly set.

To start the camera installation process:

- Click on the **'Start'** button.

**Note**  
The **'Start'** button toggles to a **'Stop'** button when activated. During camera installation, all conference activities will be stopped.

The following warning appears:

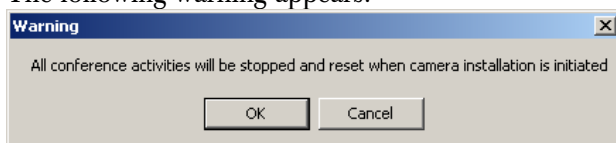


Figure 5 Camera installation warning

- Click on **'OK'** to continue with camera installation.

The following window appears:

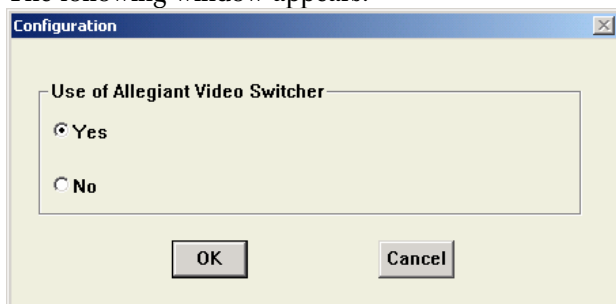


Figure 6 Configuration window

In this window must be select if an Allegiant video switcher is used or not.

If **'Yes'** is chosen the Allegiant Video Switcher (AVS) mode is selected. If **'No'** is chosen the Direct Camera Control (DCC) mode is selected.

In case of AVS several cameras are connected via a Allegiant video switcher to the system and screenlines can be added to the camera images.

In case of DCC the camera is directly connected to the system and only images with the addition of screen lines can be used.

**Note**  
If you want to change the control mode at any other time go to Configuration!... in the menu.

If there is no communication between the CCU and the Allegiant video switcher, the following error message appears:

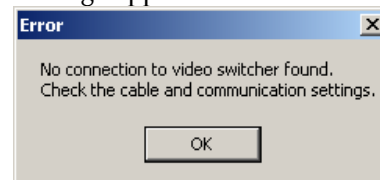


Figure 7 No connection to video switcher error message

- Click on **'OK'** and ensure that the connection, cable and communication settings between the Allegiant video switcher and the CCU are correctly made.

**Note**  
In case of Direct Camera Control there is no warning when there is no connection between the AutoDome and the CCU.

The following window appears:

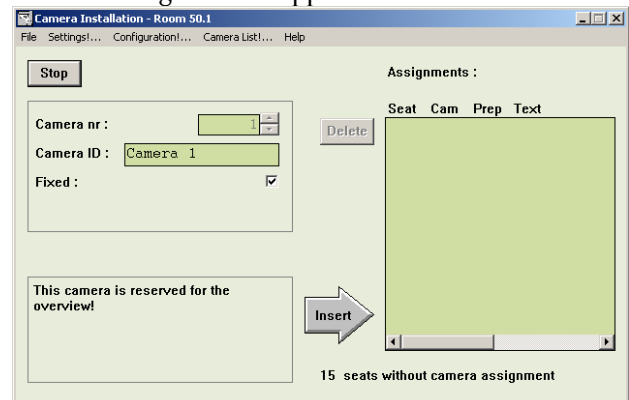


Figure 8 The Camera Installation window

### 3.2.1 Specifying the overview camera

For Allegiant Video Switchers (AVS) Camera 1 is always reserved for the overview. For Direct Camera Control (DCC) the highest pre-position is reserved for the overview. The overview gives a general overview of the conference venue when all the microphones are off (and therefore no conference participant is on camera). In case of AVS the overview camera can also be used when a dome camera is moving from one preposition to another. It acts as the default camera, and is activated when no other camera is selected by the Allegiant video switcher in response to conference activity.

The overview camera can be either a fixed or dome camera. However, in single-camera configurations, the overview camera is always a dome camera with its last preposition showing the overview.



#### Note

When a dome camera is used as the overview camera, the '**Camera movement time**' option is disabled.

If a fixed camera is used, the edit fields for seat (or unit) number and text are not displayed. It is not possible to assign this camera to a seat or unit. The following screen text is displayed:

*'This camera is reserved for the overview'*



#### Note

The camera ID for camera 1 is '**greyed**' and cannot be edited.

More detailed information about defining cameras is given later in this section. After defining the overview camera, it is necessary to save the setting. To do so:

- Click on the '**Insert**' button.

The overview camera information will appear in the '**Assignments**' list of the Camera Installation window. The next seat or unit number which has not yet been assigned to a camera will appear in the edit fields of the Camera Installation window.

### 3.2.2 Selecting a seat (or unit) number

In systems with PC control, the Automatic Camera Control software takes the seat numbers from the current installation file. In systems with a stand-alone CCU, the Automatic Camera Control software uses 'unit' numbers instead of 'seat' numbers.

To enter or change the camera control settings for a delegate's contribution unit, it is first necessary to select that unit's seat or unit number. There are two ways of selecting a seat or unit number.

The Automatic Camera Control software will automatically propose a seat or unit number in the '**Seat nr.**' edit field of the Camera Installation window. It is possible to accept this number, or to change it using the up and down arrow keys of the edit field. Alternatively, it is possible to press the microphone button or any of the soft keys on a contribution unit. This will automatically result in the seat or unit number and any other entered parameters appearing in the Camera Installation window.



#### Note

Selecting a seat or unit number causes the LEDs of the soft keys, and the microphone LED on the corresponding contribution unit to flash.



#### Note

After pressing the '**Insert**' push button, the software automatically loads the next seat or unit number which has not been assigned to a camera.

The total number of seats (or units) which have not yet been assigned to a camera is displayed in the Camera Installation main window in the lower right-hand corner:

*'n seats without camera assignment'*

Where 'n' is the number of seats (or units).

Only seat (or unit numbers) without camera assignment can be selected.



#### Note

During installation, the audience monitor continues to show the image from the overview camera, except in one-camera configurations where it will show the same view as the operator monitor. The operator monitor shows the selected camera picture.

### 3.2.3 Selecting camera number

To continue with the camera installation, a camera number should be assigned to each seat or unit number. To do so:

- Select the number of the camera you want to assign.

### 3.2.4 Editing camera ID

Each camera can have a descriptive ID (maximum

16 characters) entered in the '**Camera ID:**' edit field. This, for example, could be used to give each camera a descriptive ID relating to the position of the camera in the conference venue. This text appears on the operator monitor but not on audience monitors.

Figure 9 Camera ID editing

To enter or edit the camera ID:

- Select the '**Camera ID**' edit field.
- Enter the required text.

### 3.2.5 Specifying camera type

For AVS the type of camera (fixed or preposition) must be specified. To specify a fixed camera:

- Click on the '**Fixed:**' check box.

Figure 10 Camera edit fields for fixed cameras

A tick mark (✓) appears to indicate that a fixed camera type has been selected. (This option is not available for DCC).

- Click on the '**Fixed:**' check box again to deselect it.



#### Note

When the '**Fixed:**' check box is not ticked the '**Number of prepositions:**' and '**Selected preposition:**' edit fields are visible.

The camera edit fields now appear as follows:

Figure 11 Camera edit fields for preposition cameras

The '**Number of Prepositions**' edit field (default 99) and the '**Selected preposition**' edit field appear. To assign a preposition to a seat (or unit):

- Click on the scroll-up or scroll-down button on the '**Selected preposition**' edit field.



#### Note

When a preposition is changed, the operator monitor displays the image assigned to that preposition number using the Allegiant video switcher.

Once the preposition is selected it must be defined using the joystick on the Allegiant or virtual keyboard. For more information, refer to the user documentation for the Allegiant or virtual Keyboard. When you have defined the preposition:

- Click on '**Insert**' to enter the setting.

If a preposition that is already in use is selected, the following warning appears when the '**Insert**' button is pressed:

Figure 12 Preposition in use warning



#### Note

In case of DDC this warning is not shown.

### 3.2.6 Entering seat (or unit) text

One or two lines of text can be entered for each seat (or unit). The text appears on both the operator monitor and audience monitors. To enter seat (or unit text):

- Select the '**Seat nr:**' edit field, and enter the required text.

**Note**

If '**Double Seat Text**' is selected in the '**Settings**' dialogue box, two lines of text can be entered.

The screenshot shows a software interface with a light green background. On the left, the text 'Seat nr :' is followed by a numeric input field containing '0001' and a small spinner control. Below this, the text 'Seat text :' is followed by two stacked text input fields. The top field contains the word 'Chairman' and the bottom field contains 'McMurf'.

Figure 13 Seat (or unit) text editing

**Note**

In case of DDC is is not possible to enter a seat text.

### 3.2.7 Inserting seat (or unit) numbers and camera settings

When the seat (or unit) and camera settings are correct, the camera can be assigned to the seat (or unit). To do so:

- Click on the '**Insert**' button.

The Seat number, camera number, preposition number (if applicable) and screen text is stored and displayed in the *'Assignments:'* list. An example of the *'Assignments:'* list is shown below.

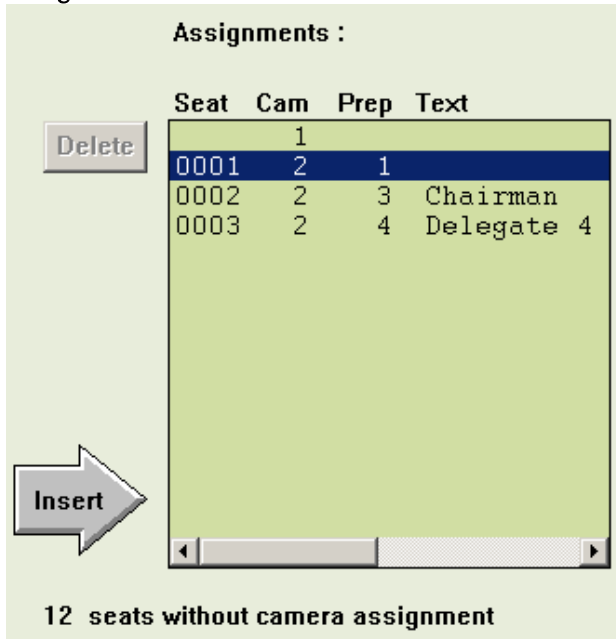


Figure 14 Complete assignment list

### 3.2.8 Editing entries in the *'Assignments:'* list

It is possible to recall entries in the *'Assignments:'* list. This allows you to change their settings. To do so:

- Double-click on the entry in the *'Assignments:'* list to be edited.

The chosen entry and its settings will appear on the left-hand side of the *'Camera Installation'* window.

### 3.2.9 Deleting a camera assignment from the *'Assignments:'* list

When the seat (or unit) and camera settings are incorrectly entered or have been changed, an entry in the list can be deleted. To do so:

- Click on the entry in the *'Assignments:'* list to be removed.

The text becomes highlighted.

- Click on the *'Delete'* button.

The entry is removed from the list.

It is also possible to delete an entry from the *'Assignments:'* list by using the *'Camera List!'* option on the main menu bar. To do so:

- Click on the *'Camera List!'* option on the main menu bar.

The following window appears:

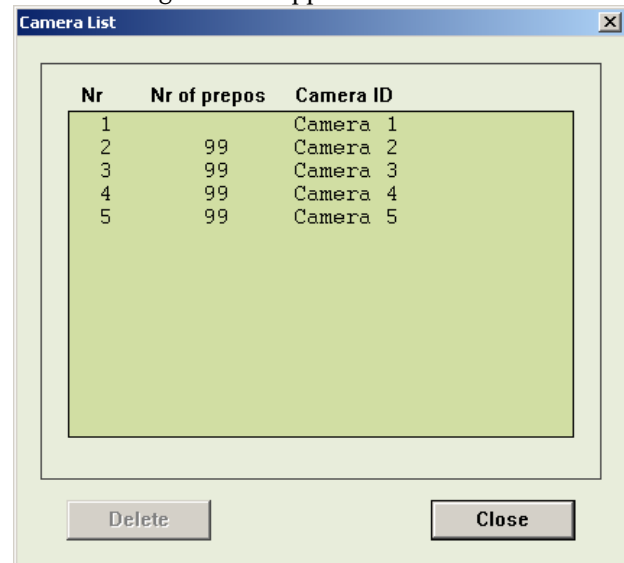


Figure 15 The Camera List window

This window gives an overview of all installed cameras and their settings. To delete a camera and its settings:

- Click on the entry in the *'Camera List'* to be removed.

The text becomes highlighted.

- Click on the *'Delete'* button.
- Click on the *'Close'* button.

The entry is removed from the list.



#### Note

The seat (or unit) numbers which have not been assigned to a camera are automatically updated.

### 3.3 System setting

The Automatic Camera Control module has the following system settings:

- Screenline usage (DCN with control software and names file only)
- Double seat text
- Camera override
- Camera movement time
- Number of audience monitors



#### Note

For AVS the above system settings are all active in installation mode. In case of DCC only the option Camera Override is available.

To enable the settings window:

- Click on the **'Settings...'** menu.

The following window appears.

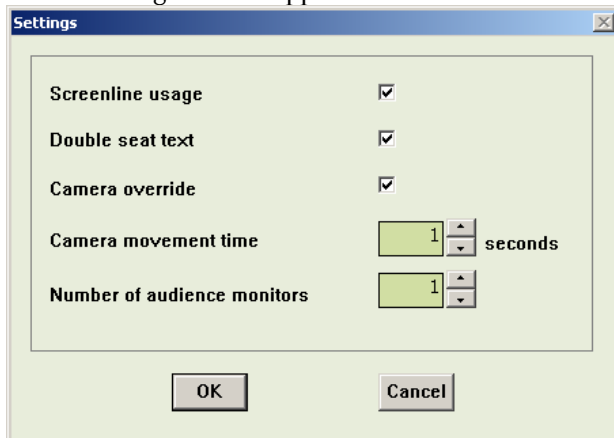


Figure 16 The 'Settings' window

### 3.3.1 Screenline usage

When enabled, this option takes the screenline (text displayed on the audience monitor) as defined in the Delegate Database software. The option is enabled by default. To enable/disable this option:

- Click on the **'Screenline usage'** check box.

A tick mark (✓) appears to indicate that this option has been enabled.



#### Note

If the **'Double text'** option is selected, two lines of 16 characters can be displayed. Otherwise, only one line of 16 characters can be shown.



#### Note

If no names file is currently open (as specified in Delegate Database) or this option is de-selected (off), the seat text (as specified in the main window) is displayed. The Automatic Camera Control software for standalone CCU systems always displays the unit text (the **'Screenline usage'** option is not displayed).

### 3.3.2 Double seat (or unit) text

An additional line of text can be entered for each seat (or unit). The text appears on both the operator monitor and audience monitors. By default, this option is not enabled. To enable the option:

- Click on the **'Double seat (or unit) text'** check box.

A tick mark (✓) appears to indicate that this option has been enabled. The **'Seat (or Unit) text:'** edit field now appears as follows:

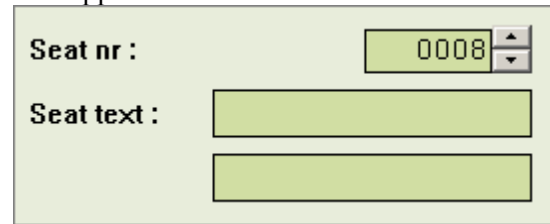


Figure 17 Two lines of screen text for seat (or unit)

### 3.3.3 Camera override

The **'Camera override'** option allows you to determine whether a newly switched on microphone automatically activates the camera covering its position, or whether the camera is only activated when the current microphone is switched off. To activate this option:

- Click on the **'Camera override'** check box.

### 3.3.4 Camera movement time

To hide camera movement (as a preposition camera moves from one position to the next), the overview camera can be activated and displayed during the movement. This option enables the period for which the camera movement is hidden to be set between 0.5 seconds and 60 seconds in 0.5 second steps. The default is 1 second. To alter the camera movement time:

- Use the up and down arrow keys to select the required setting.



#### Note

This function can only be activated if the overview camera is a fixed camera. A setting of 0 seconds disables the option.

### 3.3.5 Number of audience monitors

The number of audience monitors (excluding the operator monitor) can be set to between 1 and 4. All audience monitors show the same picture. The default is 1 audience monitor. To alter the number of audience monitors:

- Use the up and down arrow keys to select the required setting.

**Note**

It is recommended that the number selected corresponds to the actual number of audience monitors present in the venue. If the number selected is higher than this, there may be some reduction in system performance.

After you have made all the required settings:

- Click on the **'OK'** push button.

The settings will be saved, and you will return to the 'Camera Installation' window. To exit the 'Settings' window without saving any changes:

- Click on the **'Cancel'** push button.

**Note**

In stand-alone systems, when all settings have been specified and the Camera Control software has been exited, it is necessary to make a direct connection between the CCU and the Allegiant video switcher to enable camera control by the system. For information concerning the required connections, refer to the DCN Next Generation Installation and User Instructions.

## 3.4 The file menu

The file menu contains the following:

- Camera Activity
- Clear all (resets complete Assignment list)
- Print... (prints out camera and seat (unit) data)
- Import...(imports a Camera Installation configuration file)
- Export... (exports a Camera Installation configuration file)
- Exit (closes the Camera Installation program)

### 3.4.1 Camera activity

When activated, this function transmits control commands to the Allegiant switcher (AVS) or the AutoDome camera (DCC). If switched off, the CCU will not transmit these commands. This function is useful if you wish to disable camera control functionality in the DCN CCU. By default, camera activity is enabled.

To disable this function:

- Select **'File'** and click on **'Camera Activity'**.

A tick mark appears to indicate that this option has been enabled.

### 3.4.2 Clear all

This menu command clears all entries in the assignment list. To enable this function:

- Select **'File'** and click on **'Clear All'**.

### 3.4.3 Printing

It is possible to print a hard copy of the current Camera Installation file. To do so:

- Select **'File'** and click on **'Print'**.

The following dialogue box appears:

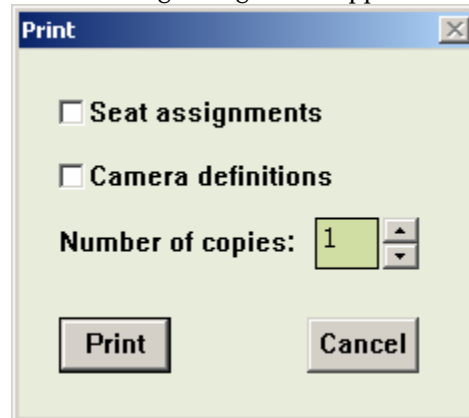


Figure 18 The 'Print' dialogue box

It is possible to specify that seat assignments are included in the printout. To do so:

- Click on the **'Seat assignments'** check box.

A tick mark (✓) appears to indicate that this option has been enabled. You can also specify that camera definitions are included in the printout. To do so:

- Click on the **'Camera definitions'** check box.

A tick mark (✓) appears to indicate that this option has been enabled. Up to nine copies of the Camera Installation file can be printed. To select the number of copies:

- Use the up and down arrow keys to select the required number.

After selecting the print settings:

- Click on the **'OK'** push button.

To exit the dialogue box without printing anything:

- Click on the **'Cancel'** push button.

You will return to the main window.

### 3.4.4 Importing and exporting Camera Installation files

It is possible to import and export Camera Installation files containing information about the configuration and settings of the Automatic Camera Control software. For systems where a DCN control PC is used, this information is automatically stored in the current installation file. However, importing and exporting Camera Installation files may be useful in

situations where you wish to use more than one configuration with an installation file.

**i Note**  
The DCN control PC can only import information relating to seat numbers which are present in the current System Installation file.

**i Note**  
In stand-alone systems, configuration settings are saved automatically on the PC and on the DCN CCU. These settings reappear when the PC is switched on. The import/export functions are a useful way of making backups, and saving/retrieving configuration settings.

**i Note**  
Only files valid for the used (AVS or DCC) system configuration can be imported.

**3.4.5 Importing Camera Installation files**

The Import function allows configuration files to be retrieved in .txt or .csv formats.

**i Note**  
The 'Import...' option is only active in installation mode. Only files valid for the used (AVS or DCC) system configuration can be imported.

To import a configuration file:

- Select 'File' and click on 'Import...'.

The following window appears:

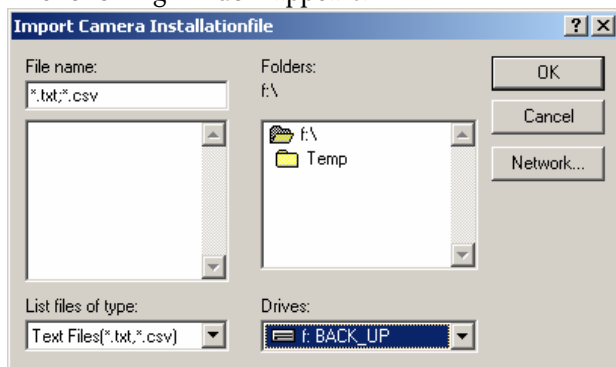


Figure 19 The 'Import Camera Installation file' window

- Select the Camera Installation file you wish to import.

- Click on the 'OK' push button.

The Camera Installation file will be imported into the Automatic Camera Control software.

**i Caution**  
The information imported into the Automatic Camera Control software will overwrite the current settings.

**3.4.6 Exporting Camera Installation files**

The Export function allows configuration files to be saved in a file location of your choice. To do so:

- Select 'File' and click on 'Export...'.

The following window appears:

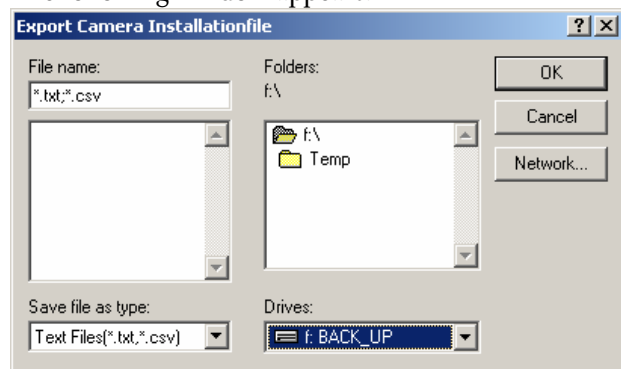


Figure 20 The 'Export Camera Installation file' window

- Select the name and location of the file you wish to export.

**i Note**  
By default, the location for exporting camera installation files is ldcnng\export

- Click on the 'OK' push button.

The Camera Installation file will be exported to the selected location.

**3.5 Exiting Automatic Camera Control**

**3.5.1 Temporarily exiting Automatic Camera Control**

It is possible to temporarily leave Automatic Camera Control without closing it down completely. To do so:

- Click on the minimize button situated at the top right of the application window.

The Automatic Camera Control program will



become iconized in the Windows taskbar. To re-enter Automatic Camera Control:

- Click on the Automatic Camera Control module icon.

### 3.5.2 Permanently exiting Automatic Camera Control

If you wish to exit Automatic Camera Control completely:

- Select the ***File*** menu and click on ***Exit***.



#### Tip

By closing the Startup program, all DCN applications – including Automatic Camera Control - will close.



#### Note

If ***Camera Activity*** is enabled camera control remains active when the software is closed.





For more information please visit [www.boschsecuritysystems.com](http://www.boschsecuritysystems.com)

© 2005 Bosch Security Systems B.V.  
Data subject to change without notice  
January 2005 | 9922 141 70491

**BOSCH**