

ADVENT[®]

Model: CCS562

**Commercial Camera System
(IR Camera & 5.6" Monitor)
Installation Manual**



Features

- 5.6" High Resolution LCD Monitor
- Built in Speaker
- Two video inputs
- Fully Adjustable
- Auto brightness adjustment
- Commercial camera with Infra Red Capability and Built in Microphone using Sony CCD technology.
- 12v or 24v power.

Table of Contents

Warnings 3

Product Description 4

Packing List 4

System Installation..... 5

Wiring Diagram 7

Specifications 9

Troubleshooting 9

Warnings

The product is intended to assist in safe driving and to allow the driver to have a broader rear view while the vehicle is in reverse. You, as the driver, are solely responsible for the safe operation of your vehicle and the safety of your passengers according to local traffic regulations. Do not use any features of this system to the extent it distracts you from safe driving. Your first priority while driving should always be the safe operation of your vehicle. Audiovox Electronics Corporation cannot accept any responsibility whatsoever for accidents resulting from failure to observe these precautions or safety instructions.

1. This product utilizes high voltage. Any unauthorized modifications or damage to the product may result in electrical shock. Handle all components with care. Inspect regularly for damage to components and cabling.
2. You are responsible for ensuring that the installation of this product does not void or affect the vehicle manufacturer's warranty. Audiovox Electronics Corporation or its subsidiaries are not liable in full or in part for improper installation resulting in loss or damage to your property, or for voiding all or part of the vehicle manufacturer's warranty.
3. Do not apply excessive force to any of the components contained within this kit. Excessive force used before, during or after installation that results in a damaged or non-functional part will void all warranties.
4. Please follow the procedures in this installation manual. Improper installation or modification of this product will void all warranties.

Product Description

This advanced high resolution monitor and camera system will show a clear picture from a reversing camera or any other video source.

The heavy duty design and high quality components make the CCS562 ideal for all industrial and commercial applications.

The integrated wiring harness and single power wire make this system simple and fast to install.

Packing List

CCS562 Parts	Barcode #	Quantity
Monitor	30272030	1
Camera	30272390	1
20M Extension Cable & 2 Adaptors	30272170	1
2.8M Harness Cable	30272420	1
Mounting Bracket	30272060	1
Mounting Kit	30272020	1
Silicon Tape		1
Manual	30272020	1

System Installation

1. Choose the mounting location for the CAM150 commercial camera on the rear of the vehicle. We recommend a position as high as possible and in the center of the vehicle.
2. Choose a suitable place in the vehicle cabin to mount the 5.6” LCD Screen. We recommend dash mounting in the corner of the vehicle.
3. Examine the vehicle to determine the best way to run the power wires to: LCD monitor, accessory power, the reverse lights and to the camera at the rear of the vehicle.
4. Attach the screen to the dash using the supplied 3M adhesive pad or mounting screws. The mounting bracket has been designed to be bent to match the shape of the mounting location.
5. Attach the camera to the rear of the vehicle using the supplied mounting screws or bolts.
6. Run the extension cable from the camera to the front of the vehicle.
7. Run the wiring harness from the LCD monitor and connect up with the Camera extension cable.
8. Attach reverse & accessory power wires.
9. Connect your reversing camera.

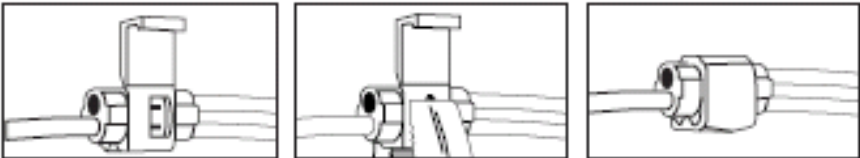
Note: When using an Advent CCS System, the signal and power for the camera will be supplied through the monitor extension cable. Please also note that the microphone in the camera will be played on the speaker built into the LCD monitor.

10. Connect the LCD Monitor to the harness.
11. Power up and adjust on screen settings.

NOTE: To adjust monitor and volume settings press the menu button on screen to cycle through the menu options.

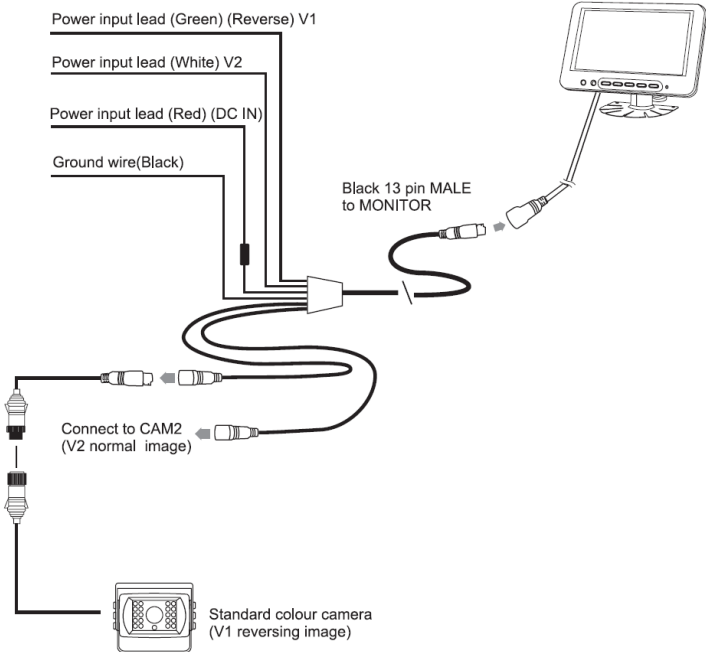
Wiring the Camera to the Vehicle's Reverse Lamp

1. Locate the reverse lamp in the tail light assembly.
2. Using the tap connector supplied, perform the following steps:
 - a) Place the un-stripped positive lead from the tail lamp in the run channel, which runs completely through the connector.
 - b) Insert the un-stripped red power wire from the camera completely into the other channel in the connector.
 - c) Make the connection between the wires by crimping down the metal connector with a pair of pliers, making sure the metal is flush with the plastic insulator.
 - d) Close the top plastic hinged cover until latched.
3. Attach the black wire to the ground (negative).
4. Repeat the above steps for the red wire.



Wiring Diagram

Note: The power and signal will be provided through a single cable from the monitor.



Specifications

1. Voltage: DC12V-DC24V
2. Current: 7w
3. LCD Brightness: 350cd/m²
4. LCD Contrast Ratio: 300:1
5. Image Display: Selectable Normal/Reverse Image
6. LCD: Adjustable Viewing Angle
7. Camera Viewing Angle: 150 degrees
8. Minimum Illumination: 0 Lux (w/ Infra Red)
9. Horizontal Resolution: 420 TV Lines
10. Dimensions: LCD (150x126x27)mm Camera (82x73x58)mm

Troubleshooting

Symptom	Solution
No power to the monitor	<ol style="list-style-type: none"> 1. Check that reverse power is attached to orange wire. 2. Check that accessory power is attached to red wire 3. Check that black is attached to vehicle body (ground) 4. Check fuse and if blown ONLY replace is fuse of same amperage.
No image from backup camera when vehicle placed in reverse	<ol style="list-style-type: none"> 1. Check that camera is functioning correctly 2. Check that orange wire is attached to reverse power. 3. Check that backup camera is attached to input CAM1.
Image is mirrored or requires adjustment	<ol style="list-style-type: none"> 1. All settings are adjusted by pressing on the menu button and cycling through to MIRROR settings
Sound can not be heard from Advent camera	<ol style="list-style-type: none"> 1. Increase volume through MENU options



AUDIOVOX

3 YEAR LIMITED WARRANTY

Applies to Audiovox Series Control Modules and Sensors.

AUDIOVOX Electronics Corporation (the Company) warrants to the original retail purchaser of this product that should this product or any part thereof, (other than transmitters) under normal use and conditions, be proven defective in material or workmanship within 36 months from the date of original purchase, such defect(s) will be repaired or replaced with new or reconditioned product, (at the Company's option) without charge for parts or repair labor.

To obtain repair or replacement within the terms of this Warranty, the product is to be delivered with proof of warranty coverage (e.g. dated bill of sale), specification of defect(s), transportation prepaid, to an approved warranty station. This Warranty is not assignable or transferable.

This Warranty does not cover damage to the vehicle's electrical system or costs incurred for removal or reinstallation of the product. This Warranty does not cover batteries nor apply to any product or part thereof which, in the opinion of the Company, has suffered or been damaged through alteration, improper installation, mishandling, misuse, abuse, neglect, accident, or by removal or defacement of the factory serial number/bar code label(s).

This Warranty is in lieu of all other express warranties or liabilities. ANY IMPLIED WARRANTIES, INCLUDING ANY IMPLIED WARRANTY OF MERCHANTABILITY, SHALL BE LIMITED TO THE DURATION OF THIS WRITTEN WARRANTY. ANY ACTION FOR BREACH OF ANY WARRANTY HEREUNDER INCLUDING ANY IMPLIED WARRANTY OF MERCHANTABILITY MUST BE BROUGHT WITHIN A PERIOD OF 48 MONTHS FROM THE DATE OF ORIGINAL PURCHASE. IN NO CASE SHALL THE COMPANY BE LIABLE FOR ANY CONSEQUENTIAL OR INCIDENTAL DAMAGES FOR BREACH OF THIS OR ANY OTHER WARRANTY. No person or representative is authorized to assume for the Company any liability other than expressed herein in connection with the sale of this product.

The company does not warrant that this product cannot be compromised or circumvented. THE EXTENT OF THE COMPANY'S LIABILITY UNDER THIS WARRANTY IS LIMITED TO THE REPAIR OR REPLACEMENT PROVIDED ABOVE AND, IN NO EVENT, SHALL THE COMPANY'S LIABILITY EXCEED THE PURCHASE PRICE PAID BY

Audiovox Electronics Corporation, 150 Marcus Blvd., Hauppauge, New York 11788 • 1-800-645-4994

128-7075C

© 2008 Audiovox Electronics Corp., 150 Marcus Blvd., Hauppauge, N.Y. 11788



For Customer Service
Visit Our Website At
www.audiovox.com
Product Information, Photos,
FAQ's Owner's Manuals

