

# JVC

## WIDE LCD PANEL TV INSTRUCTIONS



**LT-42Z49**

ENGLISH

### Contents

#### PREPARATION

Safety precautions.....	2
Remote control buttons and functions...	3
Set up and connections.....	4
Initial settings.....	6
Registering / Editing channels.....	6

#### FUNCTIONS

Picture setting.....	7
Sound setting.....	9
Useful functions.....	10
Viewing Teletext.....	12
Watching Video or DVDs.....	12
Configuring your remote control.....	13

#### REFERENCE

Troubleshooting.....	15
Technical information.....	16
CH/CC List.....	18
Specification.....	19

**HDMI**™  
HIGH-DEFINITION MULTIMEDIA INTERFACE

GGT0312-001A-H

## Thank you for buying this JVC LCD panel television.

To make sure you understand how to use your new TV, please read this manual thoroughly before you begin.

### Follow this manual regarding setup!

- Connect only to a 110-240 V, 50/60Hz AC outlet.

### Make enough room for inserting and removing the power plug!

### Place the TV as close to the outlet as possible!

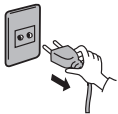
- The main power supply for this TV is controlled by inserting or removing the power plug.

### Never cut or damage the power cord!

- If the AC plug is not the right shape, or the power cord is not long enough, use an appropriate plug adapter or extension cable. (Consult your retailer.)

### Unplug the power cord when going out!

- The power buttons on the remote control and the TV unit cannot completely turn off the TV. (Make appropriate arrangements for bedridden people.)

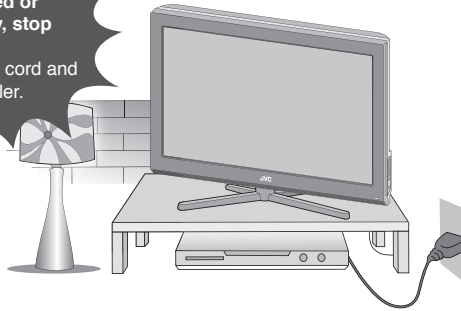


### Do not allow the TV to fall!

- Do not rest your elbows on, or allow children to hang from the TV.
- There is a risk that the TV will fall and cause injuries.
- Make use of the hole on the back of the stand to prevent the TV from falling easily. (P. 4)

If the TV is damaged or behaving strangely, stop using it at once!

- ➔ Unplug the power cord and contact your retailer.

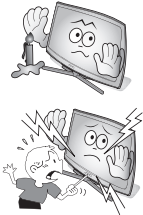


If a television is not positioned in a sufficiently stable location, it can be potentially hazardous due to falling. Many injuries, particularly to children, can be avoided by taking simple precautions such as:

- Using cabinets or stands recommended by the manufacturer of the television.
- Only using furniture that can safely support the television.
- Ensuring the television is not overhanging the edge of the supporting furniture.
- Not placing the television on tall furniture (for example, cupboards or bookcases) without anchoring both the furniture and the television to a suitable support.
- Not standing the televisions on cloth or other materials placed between the television and supporting furniture.
- Educating children about the dangers of climbing on furniture to reach the television or its controls.

### Never place anything on the TV!

- Placing liquid, naked flames, cloths, paper, etc. on the TV may cause a fire.
- **Never expose to rain or moisture!**
  - To prevent fire or electric shock, never allow liquids to enter the unit.
- **Never insert objects into the cabinet openings!**
  - It may cause a fatal electric shock.
  - Take care when children are near.



### Hold the TV so as not to scratch the screen!

- Do not touch the screen when carrying the TV.
- **Do not carry the TV on your own!**
  - In order to prevent accidents, ensure that the TV is carried by two or more people.
- **When attaching the TV to the wall, use the optional JVC wall mounting unit!**
  - Consult a qualified technician.
  - See the included manual on mounting procedures.
  - JVC assumes no responsibility for damage due to improper mounting.
- **Never listen to headphones at high volume!**
  - It may damage your hearing.

### Never dismantle the rear panel!

- It may cause an electric shock.
- **Never obstruct the ventilation holes!**
  - It may cause overheating or a fire.
- **Handle LCD panel with care!**
  - Use a soft, dry cloth when cleaning.

### Never try repair the TV yourself!

- ➔ If the problem cannot be solved in "Troubleshooting" (P. 15), unplug the power cord and contact your retailer.

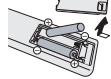
• For more details on installation, usage and safety ➔ Consult your retailer.

# Remote control buttons and functions

## • Insert the batteries

Use two “AAA/R03” dry cell batteries. Insert the batteries from the ⊖ end, making sure the ⊖ and ⊕ polarities are correct.

### “AAA/R03” Batteries



## WARNING:

Batteries shall not be exposed to excessive heat such as direct sunshine, fire or the like.



If this symbol is shown, it is only valid in the European Union.

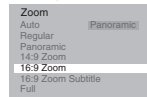
Switch between “TV, STB, BD/DVD, AUDIO”

Select TV or Video input

Channel information,

Turn the on-screen guide off / on. (While on-screen menu is displayed)

## Change the aspect ratio (P. 8)



1. Select  
2. Set

### V-Scroll



Move the picture with ▲ or ▼ while this bar is displayed.

## Channel selection

Select the desired channel number.

### For Hyper Scan



PR changes without changing the picture. Once you stop pressing CHANNEL+ or CHANNEL - button, picture will change to the desired PR.

Press and hold

## RETURN PLUS function

Return to the frequently viewed channel.

**Choose the channel you want to programme**



Press and hold

Return Plus Programmed!

**To cancel**



Press and hold

Return Plus Canceled!

## RETURN function

If you have not set or have cancelled the RETURN PLUS channel, this will return to the previously viewed channel.



Turn the TV on from standby

Display on-screen menu

Operate the menu

To previous screen

Turn on “Clear SD”

Colour button

Turn the Volume off/on

Adjust the volume, Turn off muting

Turn on “Sound Meister”

Change channel/page

To Teletext

Functions for viewing Teletext

Turn on “Eco Sensor”

To operate your other devices

Favourite channel setting. (P. 11)

1. Register the favourite channel



Set 1-4 ?



Press number button (1-4 only)

Press and hold

Programmed!

will be displayed.

2. Recall the favourite channel



Favourite 1-4 ?



Press number button (1-4 only)

Press

• If the favourite channel has not been registered then “No Memory” will be displayed.

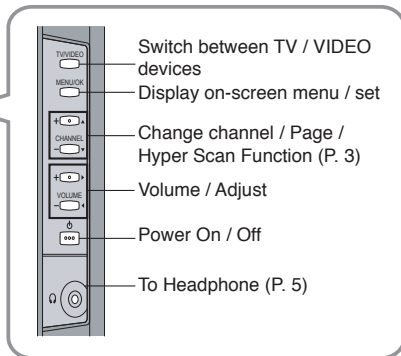
## Set up and connections



### Power lamp

- ON : Lit (Blue)
- OFF : Unlit
- Power lamp lights while the TV is on.
- "Power Lamp" (P. 11)

### Remote control sensor / Eco Sensor



## Care when setting

### Power requirements

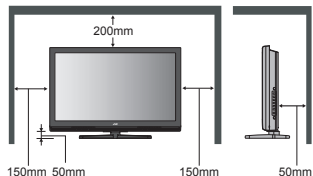
- Connect the power cord only to a 110-240V, 50/60Hz AC outlet.

### When attaching the TV to the wall, use the optional JVC wall mounting unit

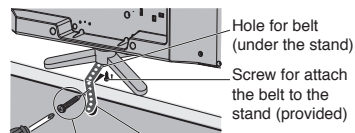
- Consult a qualified technician.
- JVC assumes no responsibility for damage due to improper mounting.
- LT-42Z49 : 400 mm x 200 mm mount which conforms to VESA standards.

### Installation requirements

- To avoid overheating, ensure the unit has ample room.

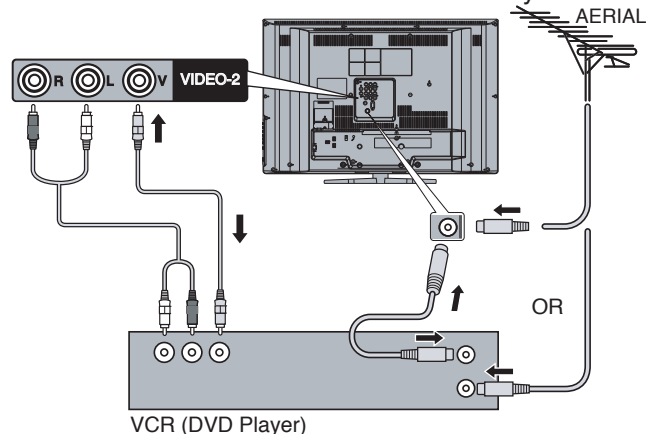


- To prevent the TV from falling, thread the belt through the hole on the back of the stand and secure it to the TV rack.



Screw (not provided) Belt (provided)

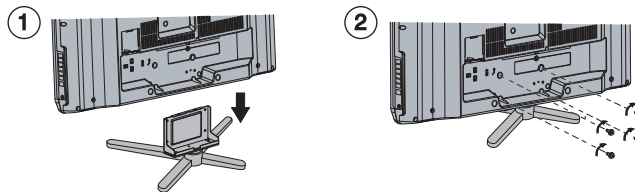
## Connect an aerial and VCR / DVD Player



- After all the connections have been made, insert the plug into an AC outlet.

## Stand Assembly

- Insert the stand into the panel at the position where the screw holes are, and fasten the screws.

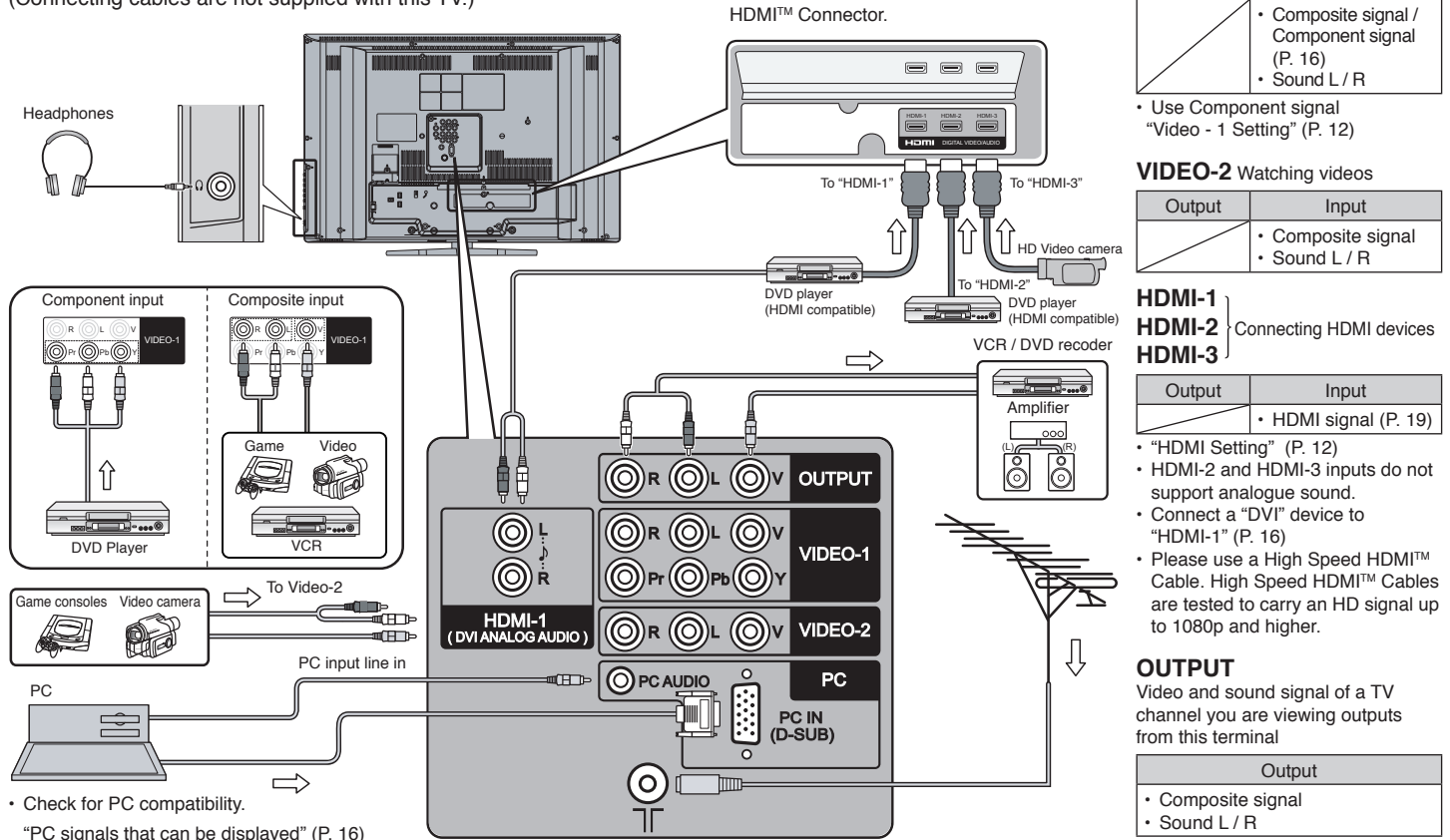


- If you have any problem with assembly, please contact a retailer or a dealership.

Note: 4 screws included.

## Set up and connections (continued)

You can connect many different devices to the rear panel of the TV.  
Please read the user manuals of each device before setup.  
(Connecting cables are not supplied with this TV.)



## Initial Settings

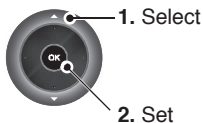
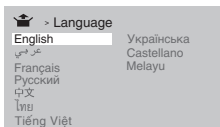
### 1 Turn on the TV



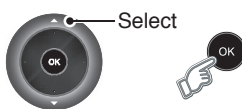
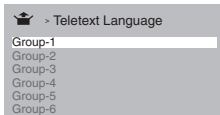
JVC logo appears

- Show only when powering on for the first time.
- The power on the unit can also be used.

### 2 Select a language

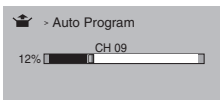


### 3 Select the Teletext language group

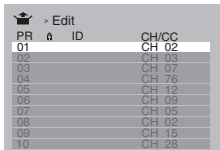


- See "Language group for Teletext" (P. 16)

### 4 Automatically register channels (Auto Program)



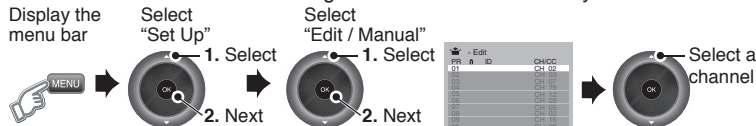
### 5 Check what was registered



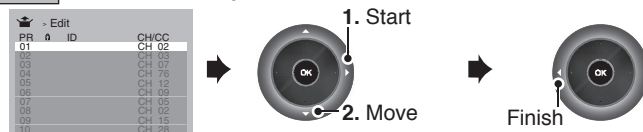
- If you want to edit channel, read the next column.

## Registering / Editing channels

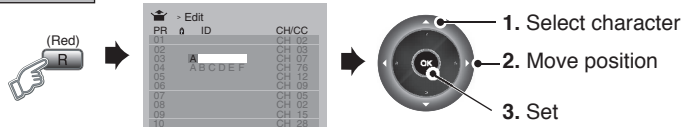
You can edit the channel list or register new channel manually.



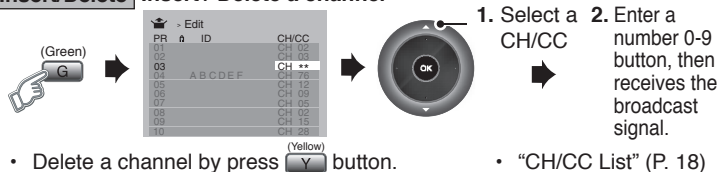
### Move Move a channel position



### ID Edit a channel name



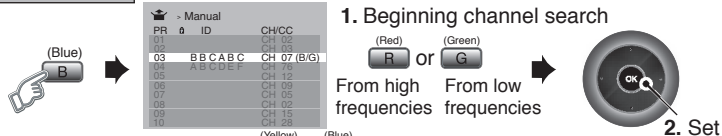
### Insert/Delete Insert / Delete a channel



- Delete a channel by press (Yellow) button.

- "CH/CC List" (P. 18)

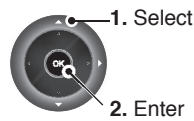
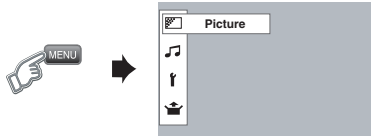
### Manual Register a new channel



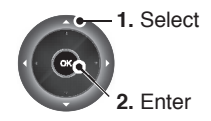
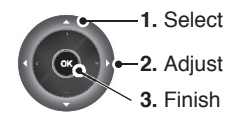
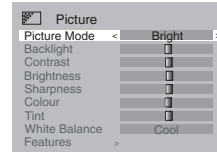
- Channel fine tuning (Yellow) / (Blue)
- If the picture or sound is unnatural → to select a system. (P. 16)

# Picture setting

## 1. Display "Picture" menu



## 2. Select item or setting

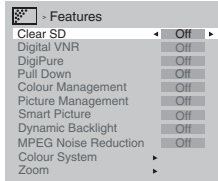


• To enter an items menu

Picture Mode	<p>You can select a preset picture setting according to your favour.</p> <ul style="list-style-type: none"> <li>→ Bright : Hightens contrast and sharpness.</li> <li>↕</li> <li>Game Mode : Adjusts picture setting when play the game.</li> <li>↕</li> <li>Soft : Softens contrast and sharpness.</li> <li>↕</li> <li>→ Standard : Standardizes picture adjustment.</li> </ul>
Backlight	<p>You can change the backlight brightness.</p> <p>Darker ↔ Brighter</p>
Contrast	<p>You can change the contrast of the picture.</p> <p>Lower ↔ Higher</p>
Brightness	<p>You can change the brightness of the picture.</p> <p>Darker ↔ Brighter</p>
Sharpness	<p>You can change the sharpness of the picture.</p> <p>Softer ↔ Sharper</p>
Colour	<p>You can change the colour intensity of the picture.</p> <p>Lighter ↔ Deeper</p>
Tint	<p>You can change the colour tint only in NTSC.</p> <p>Reddish ↔ Greenish</p>
White Balance	<p>You can change the white balance of the picture to better match the type of video being viewed.</p> <ul style="list-style-type: none"> <li>→ Cool : Bluish white colour.</li> <li>↕</li> <li>Warm : Reddish white colour.</li> <li>↕</li> <li>→ Mid : Normal white colour.</li> </ul>

# Picture setting (continued)

## Finer picture adjustment



**Clear SD**

: For clearly picture (Off / Mode-1 / Mode-2)  
When Clear SD set to Mode-1 or Mode-2, then Digital VNR, DigiPure, Picture Management and MPEG Noise Reduction cannot be operated.

**Digital VNR**

: Reduces the amount of noise in original picture. (Off / On)

**DigiPure**

: For natural - looking outlines (Off / On)

**Pull Down**

: For smooth cinema film (Auto / Off / On)

**Colour Management**

: For natural - looking pictures (Off / On)

**Picture Management**

: Fixes bright / dark pictures. (Off / On)

**Smart Picture**

: Makes it easier to view white areas (Off / On)

**Dynamic Backlight**

: Reduces the brightness of the backlight when the screen is dark (Off / On)

**MPEG Noise Reduction**

: Reduces MPEG video noise (Off / On)

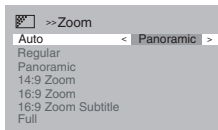
**Colour System**

: When there is no colour, change the colour system. (PAL / SECAM / NTSC 3.58 / NTSC 4.43 / AUTO)

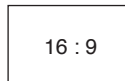
**Zoom**

: Changes the aspect ratio.

When HD (720p,1080i or 1080p), PC signal is received, the following zoom mode can be selected.



**Panoramic**



**Regular/Slim**



**14:9 Zoom**



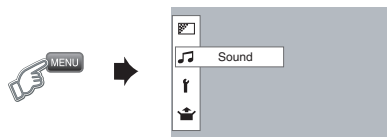
signal \ Zoom mode	Full	Slim	Panoramic Zoom	Full Native
720p	●	●	●	-
1080i	●	●	●	●
1080p	●	●	●	●
PC mode	●	● (Regular)	-	-

Features

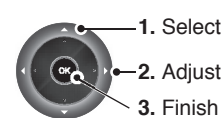
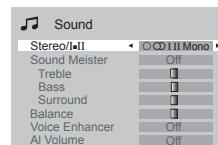
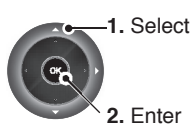


# Sound setting

1. Display "Sound" menu.



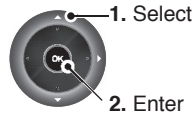
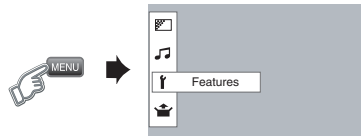
2. Select item or setting



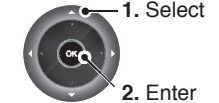
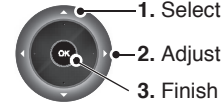
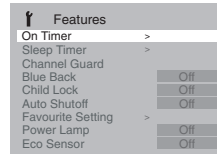
Stereo/I+II	Selects the broadcast sound stereo, mono or bilingual language (○: Mono / ◐ : Stereo / I : SUB1 / II : SUB2 / Mono)
Sound Meister	Sets sound theme to match your listening source (Off / Dynamic / Pure / Living)
Treble	Compensates high frequencies to widen the frequency band. (Weaker ↔ Stronger)
Bass	Compensates low frequencies to widen the frequency band. (Weaker ↔ Stronger)
Surround	Expands the stereo sound naturally. (Narrower ↔ Wider)
Balance	Sets speaker balance (Left Stronger ↔ Right Stronger)
Voice Enhancer	Uses sound enhancement technology (On/Off)
AI Volume	Prevents sudden increase or decrease of sound when changing channels. (On/Off)

# Useful functions

1. Display "Features" menu.



2. Select item or setting

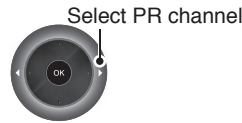
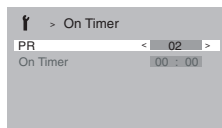


• To enter an items menu

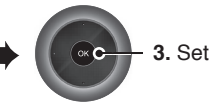
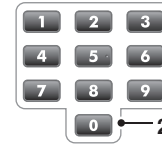
## On Timer

TV to turn on automatically from standby mode at a set channel and time.

1. Select PR channel that you want to watch.



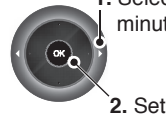
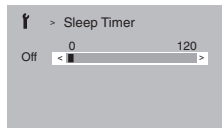
2. Set the On time to your desired period of time.



Note : Press to reset the time.

## Sleep Timer

TV to turn off automatically to standby mode after a set time.

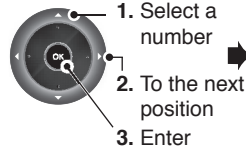


Note : When the remaining elapse is one minute, "Good Night!" appears on the screen.

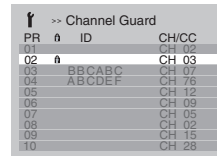
## Channel Guard

Stops children from watching specific channels.

1. Select "Channel Guard"




2. Select a channel and lock it ( : locked )




• View a locked channel by use the numerical buttons to enter the channel number. When appears, press "DISPLAY" button and enter your "ID No."

## Useful functions (continued)

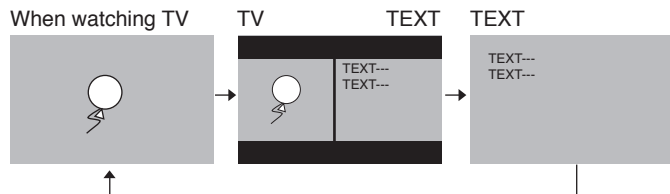
Blue Back	Displays a blue screen and mute the sound when the signal is weak or absent. (On / Off)
Child Lock	Disables the side control buttons of the TV. (On / Off)
Auto Shutoff	Sets the power to turn off if no TV signal (RF) is received and no operation is performed for about 15 minutes. (On / Off)
Favourite Setting	<p>Deletes the favourite channel that you registered.</p> 
Power Lamp	Sets power lamp lighting while the TV is on. (On / Off) (P. 4)
Eco Sensor	Automatically adjusts the picture contrast according to the brightness of your room (On / Demo / Off)

- Change the on screen menu size.

Appearance	<p>Change the on-screen menu size.</p> 
------------	--

## Viewing Teletext

This TV can display TV broadcasts and Teletext on the same channel in two windows.



2. Select a Teletext page by pressing number button (0-9)

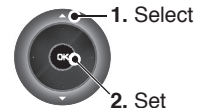
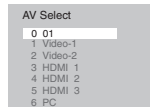
• Move up or down a page by



Hold		Holds the current page. • Cancels by pressing this button again.
Size		Doubles the size of the displayed text.
Index		Returns to page "100" or a previously designated page.
Sub-page		Displays, and/or changes the number of Sub-page. • Cancel by press this button again.
Reveal		Displays hidden information • Example : answer to a quiz, etc.

## Watching Video or DVDs

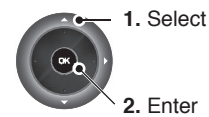
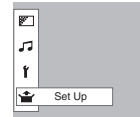
Select the input Source.



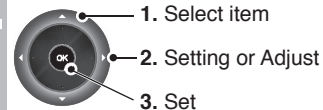
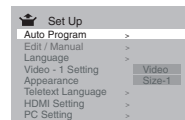
Note: TV/VIDEO button select the video source by move down or use button 0-6 for selection.

• Operate the connected device and play video.

1. Select "Set Up"



2. Select item

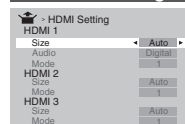


### Video - 1 Setting

Switch between video and component signal (Video / Component)

### HDMI Setting

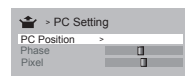
Setting for HDMI input



**Size** : Normally set to "Auto." If wrong screen size appears in 480p (525p), change to "1" or "2"  
**Audio** : Normally set to "Auto." If no sound, change to "Analogue" or "Digital."  
**Mode** : If no picture, change to "1" or "2".

### PC Setting

Setting for PC input



**PC Position** : Adjusts screen position.  
**Phase** : Sets the focus of screen.  
**Pixel** : Adjusts the horizontal feature of screen.

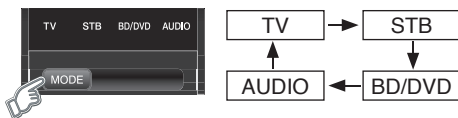
# Configuring your remote control



You can configure your TV's remote control to operate your other devices.

## Configure your remote control.

1. Turn on the device manually.
2. Switch the remote control mode that matches your device. Refer to the table on the right to select an appropriate mode.




- The indicator lights for 3 seconds each time the remote control is operated.

3. Find the remote control code for your device according to its brand from the "Remote control codes" manual.
4. Set the remote control code.



Press and hold      Enter four digit number      Release the button

5. Point the remote control at your device, press  and confirm that your device is turned off. If your device does not respond, try entering another available code.

### Note

- If your device does not respond, try all the available codes for the device's brand.
- If none of the code works, or the brand is not listed, refer to "Using the search code function" (P. 14).

MODE	Applicable devices
TV	This TV only
STB	Cable Set Top Box, Cable/PVR Combination, Satellite Set Top Box, SAT/PVR Combination
BD/DVD	DVD, Blu-Ray DVD, HD DVD, DVD-R, Home Theater in Box, TV/DVD Combination
AUDIO	Amplifier, Receiver, Home Theater in Box

## Using the search code function

This function searches through the codes one by one, beginning from the first code in the list.

### 1. Turn on the device manually.

### 2. Switch the remote control mode that matches your device. Press **MODE** to select the mode.

### 3. Activate the search code function.

Hold down **⏻** and **BACK** until the mode indicator blinks.

### 4. Point the remote control at your device and press **⏻**. If there is no response, try the next code by pressing **▶** and press **⏻** again. Repeat the process until your device turns off.

### 5. Press **BACK** to register the code. The code is now set. Confirm that the mode indicator goes out.

- If your TV's remote control still does not work even after using the search code function, use your device's own remote control. The TV's remote control is not guaranteed to work with all models, brands or operations.

## Button functions



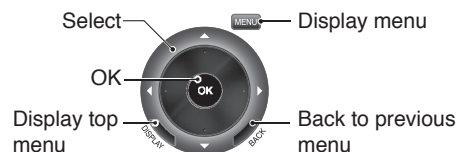
### ■ Change the remote control mode



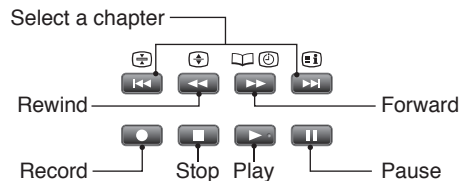
### ■ Turn on/off the device



### ■ Navigate the menus



### ■ Playback / Record, etc.




### ■ Mute ⇒ Press “**MUTE**”

### ■ Volume ⇒ Press “**VOL**”

- Select a surround mode ⇒ Press “**SURROUND**”
  - Depending on your device, some functions may not be operable with this remote control.

# Troubleshooting

If a problem occurs when you are using the TV, check the below troubleshooting guide before calling for repair.

Severe noise or snow	Page
Check the aerial cable and TV connections .	P. 4
Check the direction of the aerial.	P. 4
Check the aerial or its cable damaged or not.	--
Patterns, stripes or noise	
Interference caused by devices such as an amplifier, personal computer, or a hair drier, Move it away from TV.	--
Ghosting ( Doubling of images )	
Interference occurs caused by signal reflection from mountains or building. Try to adjust the aerial's direction or use another antenna.	--
Cannot turn it on	
Ensure the power cord is connected to the AC outlet correctly.	--
Cannot operate the remote control.	
The batteries may be exhausted. Replace with new batteries. Ensure that you are operation the remote control at less than 7 meters from the front of your TV.	--
Remote control stops working	
Unplug TV, several minutes later plug it in again.	--
Side control buttons do not work	
Switch "Child Lock" to "Off".	P. 11
Aspect ratio changed unintentionally	
Press "  " button to return to your settings.	P. 8
PC screen alignment is off	
Adjust the "PC Position" in "PC Setting" of Set Up menu.	P. 12
Blue screen appears on the screen	
Switch "Blue Back" to "Off".	P. 11
Strange picture when using an external device	
If the top of the image is distorted, check the video signal quality itself.	--
If movement appears unnatural when receiving a signal from a DVD player, etc. with 625p (progressive-scanning), change the output setting of the external device to 625i (interlace-scanning)	--

Poor picture quality	Page
Unnatural colour >> Adjust "Colour" and "Backlight"	P. 7
Check "Colour System". If "Auto" is selected select the specific colour system manually.	P. 8
Noise >> Set to the following functions.	
Picture Mode : Standard	P. 7
DigiPure : On	P. 8
Dull picture >> Set to the following functions.	
Picture Mode : Bright	P. 7
DigiPure : On	P. 8
Poor sound	
Adjust the "Bass" and "Treble".	P. 9
If receiving a poor signal in "Stereo/I+II" switch to "Mono".	P. 9
Adjust the channel reception using "Manual".	P. 6
For HDMI signal, wrong screen size in 480p (525p).	
Switch "Size" in "HDMI Setting" to "1" or "2".	P. 12
For HDMI signal, green and distorted screen	
Wait a little for the signal to stabilize when switching the signal format for an "HDMI" device.	--
For HDMI signal, No picture / No sound	
Use the cable marked with HDMI logo.	P. 5
Check if the device is compliant with HDMI.	P. 12
Switch "Audio" in "HDMI Setting" to "Digital" or "Auto" for HDMI devices, or "Analogue" or "Auto" for DVI devices.	
Some functions do not work.	
It is not a malfunction. Some functions (dark background) in the menu do not work depending on the situation.	--
Black or white dots appear on the screen.	
LCD panels use fine dots ("pixels") to display images. While more than 99.99% of these pixels function properly, a very small number of pixels may not light, or may light all the time. It is not a malfunction.	--
No picture, No sound	
Some input do not output from OUTPUT terminal.	--

## Technical information

### Language group for Teletext

Group	Languages
Group-1	Turkish, Hungarian, English, German, French, Italian, Spanish, Portuguese, Greek, Swedish, Finnish
Group-2	Polish, Serbian, Croatian, Slovenian, Czech, Slovak, Rumanian, Hungarian, German, French, Italian, Swedish, Finnish
Group-3	Russian, Bulgarian, Lettish, Lithuanian, Estonian, Ukrainian, Serbian, Croatian, Slovenian, Czech, Slovak, English, German
Group-4	Arabic, Czech, Slovak, Hungarian, English, German, French, Italian, Spanish, Portuguese, Swedish, Finnish
Group-5	English, French, Turkish, Farsi
Group-6	Lettish, Lithuanian, Estonian, Ukrainian, Czech, Slovak, English, German

- If the characters are unreadable. ➔ Select different Teletext language group. (P. 6)

### Sound and Colour system in your country or region

Area	Country or Region	System	System
Asia, Middle East	Bahrain, Kuwait, Oman, Qatar, United Arab Emirates, Yemen, Indonesia, Malaysia, Singapore, Thailand, India, etc.	B/G	PAL
	China, Vietnam, etc.	D/K	
	Hong Kong, etc.	I	
	Islamic Republic of Iran, Lebanon, Saudi Arabia, etc.	B/G	SECAM
	Philippines, Taiwan, Myanmar, etc.	M	NTSC
Europe	Russia, etc.	D/K	SECAM
	Czech Republic, Poland, etc.		
	Germany, Holland, Belgium, etc.	B/G	PAL
	UK, etc.	I	
Oceania	Australia, New Zealand, etc.	B/G	PAL
	Republic of South Africa, etc.	I	PAL
Africa	Nigeria, etc.	B/G	
	Egypt, Morocco, etc.		SECAM

### PC Signals that can be displayed

- If the signal doesn't appear, check that the vertical frequency on the PC is set to "60Hz".

Resolution	640 x 480(VGA) / 1024 x 768(XGA)
Vertical frequency (Hz)	60.0

### What is "Clear SD"

LCD picture is unstable due to a large number of signal noise. Such noise appears extensively especially when an LCD displays SD signals. Clear SD mode resolves disadvantage for better picture quality.



No use "Clear SD"



Use "Clear SD"

### Connect "DVI" devices

Connect a "DVI" device to "HDMI" using "DVI-HDMI" conversion cable. Connect analogue sound output of the DVI device to L and R terminals in HDMI-1.

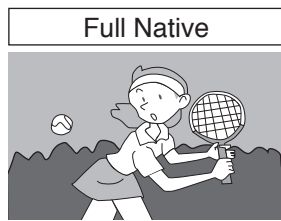
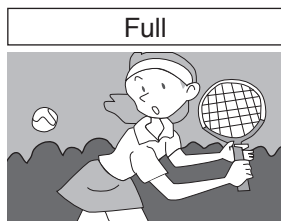
- Set "Audio" in "HDMI Setting" to "Analogue" or "Auto" (P. 12)
- HDMI-2 and HDMI-3 input does not support analogue sound (IN HDMI-1).



## Technical information (continued)

### What is “Full Native”?

- With the full HD LCD display and “Full Native”, you can enjoy full native HD resolution of 1920 x 1080. It exposes flaws in the video that were hidden when viewing on “Full”.



- \* The illustrations are emphasised to make clear differences between “Full” and “Full Native”.
- Dark bar or noise may appear at the edges of the screen when viewing in “Full native” for some videos. This is resulted from the signal itself, not due to TV malfunction.

### What is “Eco Sensor”?

You can adjust this TV so that the screen automatically adjusts to the optimum contrast of light and dark according to the brightness of your room.

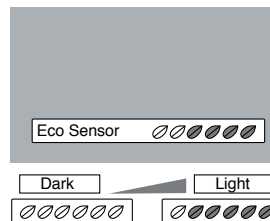
This function reduces eyestrain and the power consumption of this TV.

- Set “Eco Sensor” (P. 11)
- Make sure not to block the Eco Sensor on front of the TV (P. 4)
- To fully reduce eyestrain and the power consumption of this TV. Set to the following functions.

Eco Sensor : On or Demo (P. 11)

Smart Picture : On (P. 8)

- Using “Demo” in “Eco Sensor”, you can display the effect of the “Eco Sensor” on the screen.



## CH / CC List

To use the Insert function (P. 6), find the “CH/CC” number corresponding to the TV’s channel number from this table.

**US:** The US channel numbers are the channel numbers used in the United States, Philippines, etc.

**CCIR:** The CCIR channel numbers are the channel numbers used in the Middle East, Southeast Asia, etc.

**OIRT:** The OIRT channel numbers are the channel numbers used in Eastern Europe, Russia, Vietnam, etc.

**AUSTRALIA:** The AUSTRALIA channel numbers are the channel numbers used in Australia, etc.

CH	Channel			
	US	CCIR	OIRT	AUSTRALIA
CH 02	US-02	E2	R1	AU-0
CH 03	US-03	E3		AU-1
CH 04	US-04	E4	R2	AU-2
CH 05	US-05	E5	R6	AU-6
CH 06	US-06	E6	R7	AU-7
CH 07	US-07	E7	R8	AU-8
CH 08	US-08	E8	R9	AU-9
CH 09	US-09	E9		
CH 10	US-10	E10	R10	AU-10
CH 11	US-11	E11	R11	AU-11
CH 12	US-12	E12	R12	
CH 13	US-13			
CH 14	US-14, W+29			
CH 15	US-15, W+30			
CH 16	US-16, W+31			
CH 17	US-17, W+32			
CH 18	US-18, W+33			
CH 19	US-19, W+34			
CH 20	US-20, W+35			
CH 21	US-21, W+36	E21		
CH 22	US-22, W+37	E22		
CH 23	US-23, W+38	E23		
CH 24	US-24, W+39	E24		
CH 25	US-25, W+40	E25		
CH 26	US-26, W+41	E26		
CH 27	US-27, W+42	E27		
CH 28	US-28, W+43	E28		
CH 29	US-29, W+44	E29		
CH 30	US-30, W+45	E30		
CH 31	US-31, W+46	E31		
CH 32	US-32, W+47	E32		
CH 33	US-33, W+48	E33		
CH 34	US-34, W+49	E34		
CH 35	US-35, W+50	E35		
CH 36	US-36, W+51	E36		
CH 37	US-37, W+52	E37		
CH 38	US-38, W+53	E38		
CH 39	US-39, W+54	E39		
CH 40	US-40, W+55	E40		
CH 41	US-41, W+56	E41		
CH 42	US-42, W+57	E42		
CH 43	US-43, W+58	E43		
CH 44	US-44, W+59	E44		
CH 45	US-45, W+60	E45		
CH 46	US-46, W+61	E46		
CH 47	US-47, W+62	E47		

CH 48	US-48, W+63	E48		
CH 49	US-49, W+64	E49		
CH 50	US-50, W+65	E50		
CH 51	US-51, W+66	E51		
CH 52	US-52, W+67	E52		
CH 53	US-53, W+68	E53		
CH 54	US-54, W+69	E54		
CH 55	US-55, W+70	E55		
CH 56	US-56, W+71	E56		
CH 57	US-57, W+72	E57		
CH 58	US-58, W+73	E58		
CH 59	US-59, W+74	E59		
CH 60	US-60, W+75	E60		
CH 61	US-61, W+76	E61		
CH 62	US-62, W+77	E62		
CH 63	US-63, W+78	E63		
CH 64	US-64, W+79	E64		
CH 65	US-65, W+80	E65		
CH 66	US-66, W+81	E66		
CH 67	US-67, W+82	E67		
CH 68	US-68, W+83	E68		
CH 69	US-69, W+84	E69		

CC 24	K	S-24		
CC 25	L	S-25		
CC 26	M	S-26		
CC 27	N	S-27		
CC 28	O	S-28		
CC 29	P	S-29		
CC 30	Q	S-30		
CC 31	R	S-31		
CC 32	S	S-32		
CC 33	T	S-33		
CC 34	U	S-34		
CC 35	V	S-35		
CC 36	W	S-36		
CC 37	W+1	S-37		
CC 38	W+2	S-38		
CC 39	W+3	S-39		
CC 40	W+4	S-40		
CC 41	W+5	S-41		
CC 42	W+6			
CC 43	W+7			
CC 44	W+8			
CC 45	W+9			
CC 46	W+10			
CC 47	W+11			
CC 48	W+12			
CC 49	W+13			
CC 50	W+14			
CC 51	W+15			
CC 52	W+16			
CC 53	W+17			
CC 54	W+18			
CC 55	W+19			
CC 56	W+20			
CC 57	W+21			
CC 58	W+22			
CC 59	W+23			
CC 60	W+24			
CC 61	W+25			
CC 62	W+26			
CC 63	W+27			
CC 64	W+28			
CC 75		X		
CC 76		Y	R3	
CC 77		Z	R4	AU-3
CC 78		Z+1	R5	
CC 79		Z+2		AU-4
CC 95	A-5			
CC 96	A-4			
CC 97	A-3			
CC 98	A-2			
CC 99	A-1			

CC	Channel			
	US	CCIR	OIRT	AUSTRALIA
CC 01		S-1		AU-5
CC 02		S-2		
CC 03		S-3		
CC 04		S-4		
CC 05		S-5		
CC 06		S-6		AU-5A
CC 07		S-7		
CC 08		S-8		
CC 09		S-9		
CC 10		S-10		
CC 11		S-11		
CC 12		S-12		
CC 13		S-13		
CC 14	A	S-14		
CC 15	B	S-15		
CC 16	C	S-16		
CC 17	D	S-17		
CC 18	E	S-18		
CC 19	F	S-19		
CC 20	G	S-20		
CC 21	H	S-21		
CC 22	I	S-22		
CC 23	J	S-23		

# Specification

## Main unit

Model	LT-42Z49
Broadcasting systems	B / G / I / D / K / M
Colour systems	PAL, SECAM, NTSC 3.58 / NTSC 4.43 MHz
Channels and frequencies	VHF low channel (VL) = 46.25 to 140.25 MHz VHF high channel (VH) = 147.25 to 423.25 MHz UHF channel (U) = 431.25 to 863.25 MHz Receives cable channels in mid band (X to Z+2, S1 to S10), super band (S11 to S20) and hyper band (S21 to S41).
Sound-multiplex systems	NICAM (I / B / G / D / K), A2 (B / G / D / K)
Teletext systems	FLOF (Fastext), WST (World System Teletext)
Power requirements	AC 110 V - 240 V, 50/60Hz
Audio output (Rated power output)	10 W + 10 W
Speakers	(4 cm x 16 cm) x 2
Power consumption [standby]	160 W [1.3 W]
Screen size (visible area size measured diagonally)	106.7 cm
Dimensions (W x H x D: mm [without stand])	1014 x 695 x 279 1014 x 646 x 109
Weights [without stand]	20 kg [19 kg]
Accessories	Remote control unit : RW-C2510 x 1 AAA/R03 dry cell battery x 2 Screw x 4 Safety band (belt) and Screw x 1

## Terminals / Connectors

Terminal name	Terminal type	Signal type (IN)	Signal type (OUT)
Input terminals	VIDEO-1	RCA connectors x 6	Composite video, Analogue component 576i (625i) / 480i (525i), Progressive : 576p (625p) / 480p (525p), HD : 1080i (1125i), 720p (750p) / 1080p (1125p) Audio L / R
	VIDEO-2	RCA connectors x 3	Composite video, Audio L / R
	HDMI-1	HDMI connector x 1	HDMI 576i (625i) / 480i (525i) / 576p (625p) / 480p (525p), 720p (750p) / 1080p (1125p) / 1080i (1125i)
	HDMI-2		
	HDMI-3		
	IN HDMI -1	RCA connectors x 2	Audio L/R
	PC INPUT	D-SUB (15 pins) x 1	Analogue PC signal
PC AUDIO	PC-IN (3.5 pinjack) x 1	Audio	
Output terminals	MONITOR OUT	RCA connectors x 3	Composite video, Audio L / R
	Headphone	Stereo mini-jack x 1 (3.5 mm in diameter)	Headphone output

- We may change the design and specifications without notice.
- HDMI, the HDMI Logo and High-Definition Multimedia Interface are trademarks or registered trademarks of HDMI Licensing LLC.



**JVC**