



# myPDFmanuals

You can read the recommendations in the user guide, the technical guide or the installation guide for SONY BRAVIA KDL-46EX525. You'll find the answers to all your questions on the SONY BRAVIA KDL-46EX525 in the user manual (information, specifications, safety advice, size, accessories, etc.). Detailed instructions for use are in the User's Guide.

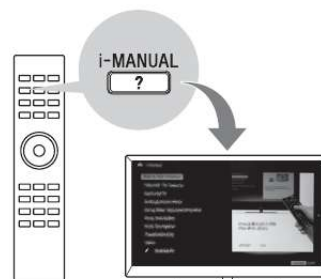
**User manual SONY BRAVIA KDL-46EX525**  
**User guide SONY BRAVIA KDL-46EX525**  
**Operating instructions SONY BRAVIA KDL-46EX525**  
**Instructions for use SONY BRAVIA KDL-46EX525**  
**Instruction manual SONY BRAVIA KDL-46EX525**

**SONY**

4-269-996 E3(1)

LCD  
Digital Colour TV  
**Operating Instructions**

Getting Started  
Using Your BRAVIA TV  
Network Setup  
Additional Information



**BRAVIA**

KDL-55EX725 / 46HX725 / 46EX729 / 46EX728 / 46EX727 / 46EX726 / 46EX725 / 46EX525  
KDL-46CX525 / 40HX725 / 40EX729 / 40EX728 / 40EX727 / 40EX726 / 40EX725 / 40EX525  
KDL-40CX525 / 37EX725 / 37EX525 / 32EX729 / 32EX728 / 32EX727 / 32EX726 / 32EX725  
KDL-32EX525 / 32EX425 / 32CX525 / 26EX325 / 24EX325 / 22EX325



[Your user manual](#)  
[SONY BRAVIA KDL-46EX525](#)

#### **Manual abstract:**

*For a list of compatible cable providers, refer to the support web site: <http://support.sony-europe.com/TV/DVBC/> ~ · The "x" that appears in the model name corresponds to a numeric digit, related to design, colour or TV system. · Instructions about "Installing Wall Mount Bracket" are included within this TV's instructions manual. · The illustrations used in this manual may differ depending on your TV model. · The illustrations of the remote used in this manual are of the RM-ED044 unless otherwise stated. · Before operating the TV, please read "Safety Information" (page 34). Retain this manual for future reference. For KDL-46/40/32EX729, KDL-46/40/32EX728, KDL-46/40/32EX727, KDL-46/40/32EX726, KDL-26/24/22EX325: Notice for Wireless Signal 1. Hereby, Sony, declares that this unit is in compliance with the essential requirements and other relevant provisions of Directive 1999/5/EC.*

*To obtain the declaration of conformity (DoC) for R&TTE Directive, please access the following URL address: <http://www.compliance.sony.de/> 2.*

*Notice for customers: the following information is only applicable to equipment sold in countries applying EU directives. TV wireless system may be operated in following countries: Austria, Belgium, Bulgaria, Cyprus, Czech Republic, Denmark, Estonia, Finland, France, Germany, Greece, Hungary, 2 GB Iceland, Ireland, Italy, Latvia, Liechtenstein, Lithuania, Luxembourg, Malta, The Netherlands, Norway, Poland, Portugal, Slovak Republic, Romania, Slovenia, Spain, Sweden, Switzerland, Turkey, and The United Kingdom. This equipment can be operated in other non-European countries. Location of the identification label Labels for Model No., Production Date (month/year) and Power Supply rating (in accordance with applicable safety regulation) are located on the rear of the TV or package.*

*Precautions Viewing the TV · Some people may experience discomfort (such as eye strain, fatigue, or nausea) while watching 3D video images or playing stereoscopic 3D games. Sony recommends that all viewers take regular breaks while watching 3D video images or playing stereoscopic 3D games. The length and frequency of necessary breaks will vary from person to person. You must decide what works best. If you experience any discomfort, you should stop watching the 3D video images or playing stereoscopic 3D games until the discomfort ends; consult a doctor if you believe necessary. You should also review (i) the instruction manual of any other device or media used with this television and (ii) our website (<http://www.sony-europe.com/myproduct>) for the latest information. The vision of young children (especially those under six years old) is still under development. Consult your doctor (such as a pediatrician or eye doctor) before allowing young children to watch 3D video images or play stereoscopic 3D games.*

*Adults should supervise young children to ensure they follow the recommendations listed above. · Do not use, store, or leave the 3D Glasses or the battery near fire, or in places with a high temperature, e.g., in direct sunlight, or in sun-heated cars. · When using the simulated 3D function, please note that the displayed image is modified from the original due to the conversion done by this television. · View the TV in moderate light, as viewing the TV in poor light or during long period of time, strains your eyes. · When using headphones, adjust the volume so as to avoid excessive levels, as hearing damage may result. TV*

*Wireless System Regulation Information For Customers in Italy s with respect to private use, by the Legislative Decree of 1.8.2003, no. 259 ("Code of Electronic Communications"). In particular Article 104 indicates when the prior obtainment of a general authorization is required and Art. 105 indicates when free use is permitted; s with respect to the supply to the public of the RLAN access to telecom networks and services (e.g. TV wireless system), by the Ministerial Decree 28. 5.2003, as amended, and Art..*



[Your user manual](#)

[SONY BRAVIA KDL-46EX525](#)