



OLYMPUS

OLYMPUS OPTICAL CO.,LTD.

San-Ei Building, 22-2, Nishi Shinjuku 1-chome, Shinjuku-ku, Tokyo,
Japan. Tel. 03-3340-2211

OLYMPUS AMERICA INC.

Two Corporate Center Drive, Melville, NY 11747-3157,
U.S.A. Tel.1-800 "O" CAMERA(622-6372)

OLYMPUS OPTICAL CO.(EUROPA) GMBH.

(Premises/Goods delivery) Wendenstrasse 14-18, 20097 Hamburg,
Germany. Tel. 040-237730

(Letters) Postfach 10 49 08, 20034 Hamburg, Germany.

OLYMPUS SINGAPORE PTE. LTD.

491B River Valley Road, #13-04 Valley Point Office Tower,
Singapore 248373
Tel. 67387838/1-800-66596787

OLYMPUS KOREA CO., LTD.

2F Duckhung Bd., 1328-10 Seocho-Dong, Seocho-gu,
Seoul 137-070 Korea. Tel. 82-2-3486-3200

奥林巴斯光学工業株式会社

日本東京都新宿区西新宿1丁目22-2 新宿サンエービル
圖文傳真 0081-3-3346-8380

奥林巴斯香港中國有限公司

香港九龍尖沙咀廣東道5號 海洋中心1520-1527室
圖文傳真 00852-2730-7976

This device complies with part 15 of the FCC Rules. Operation is
subject to the conditions that this device does not cause harmful
interference.

This Class B digital apparatus meets all requirements of the
Canadian interference-Causing Equipment Regulations.

Cet appareil numérique de la classe B respecte toutes les
exigences du Règlement sur le matériel brouilleur du Canada.

CE This camera complies with EU directive 89/336/EEC for CE
marking.

CE Die CE-Marke zeigt an, dass diese Kamera die EG-Richtlinie
89/336EWG erfüllt.

CE Cet appareil photo est conforme à la directive UE89/336/CEE
pour le marquage CE.

CE Esta cámara cumple con la directiva de la Unión Europea
89/336/EEC para la marca de CE.

CS1132000000—①

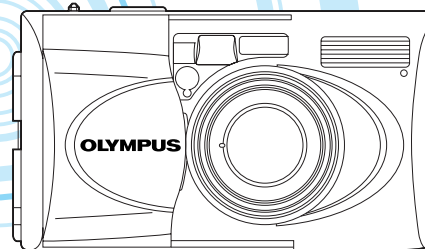
A0702



OLYMPUS



μ[mju:]—V Stylus Select 105 μMETAL



EN INSTRUCTIONS 2

FR MODE D'EMPLOI 25

ES INSTRUCCIONES 49

PO INSTRUÇÕES 73

CH 使用説明書 97

KR 사용설명서 121





2

WARNING

Read this manual carefully before using your camera.



Indicates circumstances under which mishandling resulting from ignoring this symbol could result in personal injury or property damage.

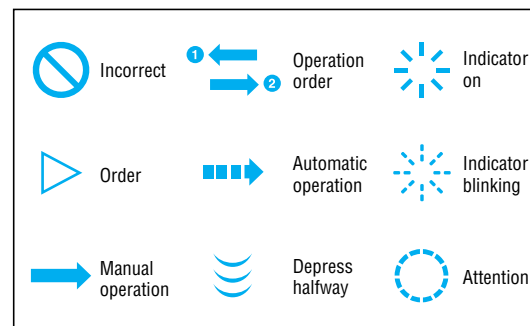
KEEP THE BATTERIES AWAY FROM FIRE. NEVER TRY TO DISASSEMBLE, RECHARGE, OR SHORT-CIRCUIT BATTERIES.

KEEP THE BATTERIES OUT OF THE REACH OF CHILDREN. IF A CHILD SWALLOWS A BATTERY, CONTACT A DOCTOR IMMEDIATELY.

NEVER ATTEMPT TO DISASSEMBLE THE CAMERA; IT CONTAINS A HIGH-VOLTAGE CIRCUIT. IF THE INTERNAL PARTS OF THE CAMERA ARE EXPOSED DUE TO DROPPING OR DAMAGE, REMOVE THE BATTERIES IMMEDIATELY TO PREVENT FURTHER USAGE.

IN CASE OF MALFUNCTION, CONSULT YOUR NEAREST OLYMPUS DEALER OR OLYMPUS SERVICE CENTER.

Symbols used in this manual:



- Pay particular attention to items in this manual enclosed in boxes.
- Products shown in pictures and illustrations may be slightly different from the actual unit.



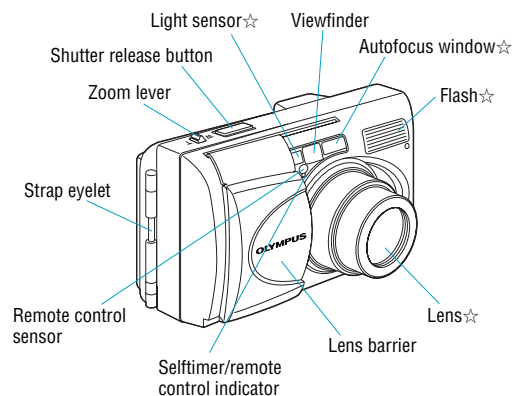
CONTENTS

3

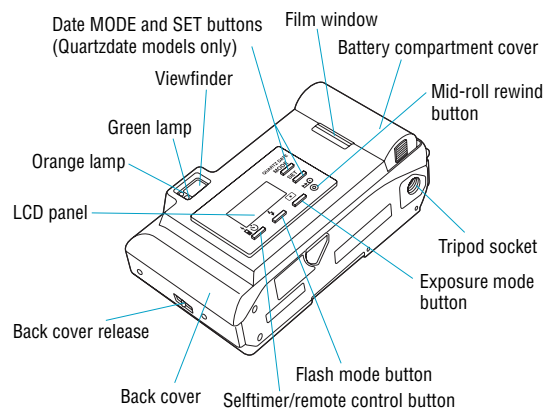
Names of parts	
Camera body	4
Viewfinder display/LCD panel	5
Using the strap	6
Loading and checking the battery	6
Loading the film	7
Taking pictures	8
After shooting	10
Unloading the film	10
Flash photography	
Setting the flash mode	11
Auto Flash	12
👁 Red-Eye Reduction Flash	12
⚡ Flash-Off	13
⚡ Fill-In Flash	13
🌙 Night Scene Flash	14
👁🌙 Red-Eye Reduction Night Scene Flash	14
Exposure modes	
Setting the exposure mode	15
☐ Spot Metering	15
🌙 Backlight Compensation	16
▲ Infinity	16
Using the selftimer/remote control	
⌚ Selftimer	17
📡 Remote control (Optional)	17
RC-300C (Optional)	18
Correcting the date and time (Quartzdate models only)	19
Printing the date/time (Quartzdate models only)	20
Care and storage	21
Specifications	22



4 NAMES OF PARTS — Camera Body

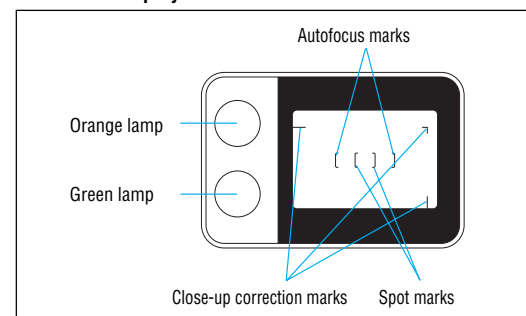


☆ Always try to keep this clean. Dirt and stains can result in pictures that are unclear and out-of-focus. Wipe off any dirt or stains with a soft cloth.



5 NAMES OF PARTS — Viewfinder Display/LCD Panel

Viewfinder Display



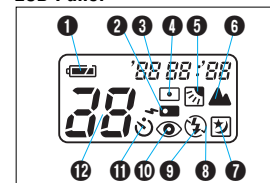
Green lamp

Lights	You can shoot	The subject is in focus. Press the shutter release button all the way to take the picture.
Blinks	You can't shoot	The subject is not in focus. The shutter will not release even if you press the shutter release button all the way.
Blinks rapidly	You can shoot while using caution	The subject is difficult for the autofocus to lock on. Although the shutter releases, the subject may be out of focus.

Orange lamp

Goes out	You can shoot	The flash doesn't fire, and the shutter releases.
Lights	You can shoot	The flash fires, and the shutter releases.
Blinks	You can't shoot	The flash is being recharged. The shutter doesn't release.

LCD Panel



- 1 Battery check
- 2 Remote Control
- 3 Date/time indicator (Quartzdate models only)
- 4 Spot Metering
- 5 Backlight Compensation
- 6 Infinity
- 7 Night Scene Flash
- 8 Flash-Off
- 9 Fill-In Flash
- 10 Red-Eye Reduction Flash
- 11 Selftimer
- 12 Exposure counter

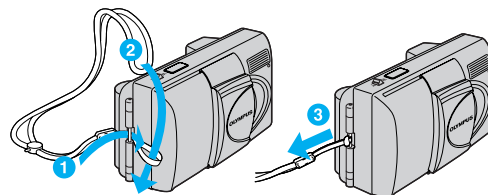
Note: Not all indicators are displayed as shown in actual use.



6

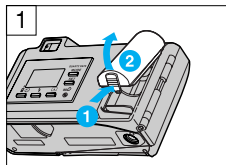
USING THE STRAP

Attach the strap as shown.



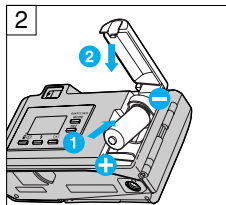
LOADING AND CHECKING THE BATTERY

Use one 3 V lithium battery (CR2).



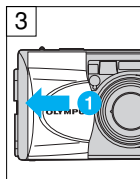
1. While pressing the bottom of the battery compartment cover ①, lift it as indicated to open ②.

Make sure the lens barrier is closed before opening the battery compartment cover.



2. Insert the battery correctly ①. Close the battery compartment cover ②.

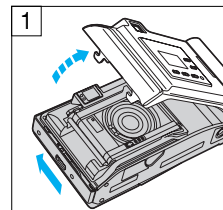
A new battery lasts for about 10 rolls of film.



	lights (turns off automatically).	Battery is OK. You can shoot.
	blinks and other indicators are displayed normally.	Battery is low and will need to replace within the next few photos.
	blinks and other indicators go out.	Battery is dead and must be replaced with a new one immediately.

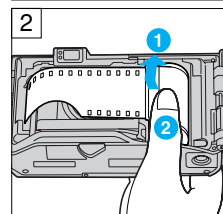
LOADING THE FILM

7



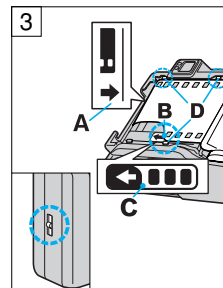
1. Slide the back cover release upward to open the back cover.

Do not touch the inside of the camera, especially the lens.



2. Insert the film cartridge until it clicks into position.

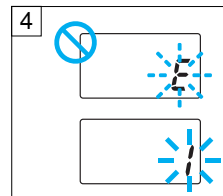
ISO400 film is recommended. If you are going to use non-DX-coded film, use ISO100 film.



3. Position the end of the film leader ahead of the line pointed to with the arrow (A), and align the edge of the perforated section (B) with (C). Make sure that the film is positioned correctly between the positioning guides (D). Then close the back cover until it clicks. Make sure the back cover release has returned to the lower position. The film automatically advances to the first frame.

4. Open the lens barrier until it clicks. Make sure the exposure counter on the LCD panel reads "1".

If "E" blinks, reload the film.

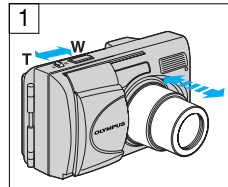




8

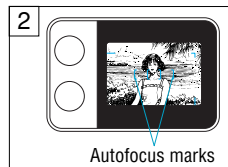
TAKING PICTURES

9



1. Open the lens barrier until it clicks. The lens will extend slightly and the LCD panel and viewfinder will turn on. Compose your shot. Push the zoom lever to the "T" side for telephoto (105mm) or to the "W" side for wide angle (38mm).

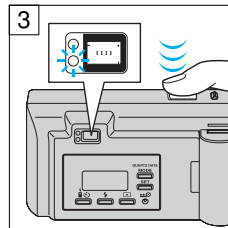
After about 4 minutes and 30 seconds of inactivity, the lens retracts and the LCD panel goes out.



Autofocus marks

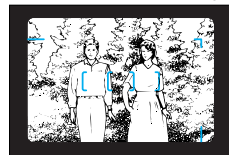
2. Position the autofocus marks on your subject.

⚠ Do not look at the sun or other strong light sources through the viewfinder.



3. Press the shutter release button halfway to focus on the subject. After making sure that the green lamp lights, press the shutter release button all the way to take the picture. After the shutter is released, the film automatically advances to the next frame.

Wide Multi-Autofocus System



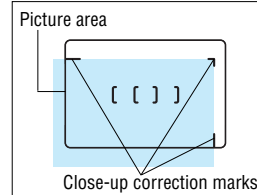
This camera uses a wide multi-autofocus system that makes it easier for the focus to lock on the subject even if it's not in the center of the frame.

Working Distance

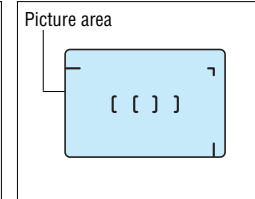
The distance to your subject is 0.8 m (2.6 ft) to infinity at 38 mm wide angle and 0.6 m (2.0 ft) to infinity at other focal lengths.

- If the green indicator blinks, the shutter cannot be released.
- Although the shutter will release when a subject is extremely close to the camera, the subject will be out of focus.
- In some cases, the autofocus may be unable to lock onto a subject.

Close-up Correction



At 0.6 m (2.0 ft) camera-to-subject distance



At other camera-to-subject distance

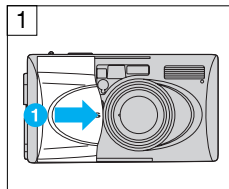
The picture area moves down so that it is inside the close-up correction marks in the viewfinder when the distance to your subject is 0.6 m (2.0 ft).





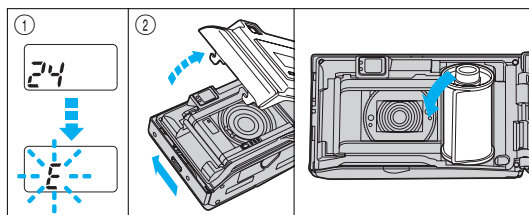
10

AFTER SHOOTING



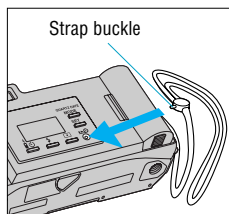
Slide the lens barrier cover slightly towards direction ①. The lens will automatically start retracting, and the LCD panel will turn off. Make sure the lens has completely retracted; then close the lens barrier all the way.

UNLOADING THE FILM



The camera automatically rewinds the film when you reach the end of a roll. Make sure the motor has stopped and that "E" is blinking ①; then open the back cover to remove the film ②.

To rewind the film before the end of the roll



Press the mid-roll rewind button with the protrusion on the strap buckle. Do not use an instrument with a sharp tip.

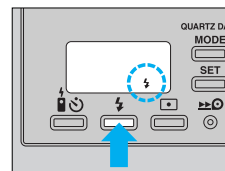
FLASH PHOTOGRAPHY

Setting the Flash Mode

11

This camera has six flash modes. Choose the mode best suited to the photographic conditions and your requirements.

How to select the mode



Press the flash mode button (⚡). The mode switches in the order shown below. The selected mode is displayed on the LCD panel.

Mode display	Flash mode	Function
No display	Auto Flash	Automatically fires in the dark, with backlighting, or under fluorescent lighting.
👁	Red-Eye Reduction Flash	Significantly reduces the phenomenon of "red-eye" (when a subject's eyes appear red in flash photography).
⚡	Flash-Off	Use this when you want to prevent the flash from firing.
⚡	Fill-In	Fires regardless of available light.
🌃	Night Scene Flash	Use this to take pictures of a subject with a night scene in the background. Use a tripod to prevent camera shake.
👁🌃	Red-Eye Reduction Night Scene Flash	Use this to take pictures of people with a night scene background while reducing "red-eye." Use a tripod to prevent camera shake.



- Do not fire the flash right in front of the eyes of people and animals.
- Do not point the camera at a motorist and fire the flash.

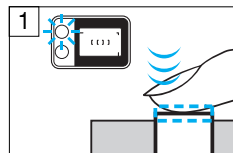




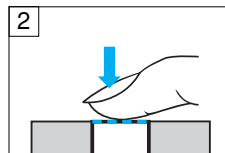
12

FLASH PHOTOGRAPHY

Auto Flash



1. Press the shutter release button to make sure the orange lamp lights.



2. Press the shutter release button all the way to take the picture.

Flash working range (with color negative film)

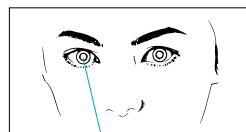
ISO	Wide angle (W)	Telephoto (T)
100	0.8 to 3.2 m (2.6 to 10.5 ft)	0.6 to 1.6 m (2.0 to 5.2 ft)
200	0.8 to 4.5 m (2.6 to 14.8 ft)	0.6 to 2.3 m (2.0 to 7.5 ft)
400	0.8 to 6.4 m (2.6 to 21.0 ft)	0.6 to 3.2 m (2.0 to 10.5 ft)

Note: When reversal film is used, the working range at the telephoto side will be reduced by about 30%.

FLASH PHOTOGRAPHY

Red-Eye Reduction Flash

A series of low-power pre-flashes before the main flash accustoms the subject's eyes to the light and helps prevent their eyes from appearing red in a photograph.



Eyes appear red.



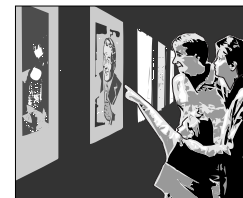
- Hold the camera securely. It takes about 1 second until the shutter releases.
- Red-eye reduction may not be effective when the subject:
 1. Is not looking at the flash from right in front.
 2. Is not watching the pre-flashes.
 3. Is too far from the camera.The effectiveness of red-eye reduction varies depending on the individual characteristics of each subject.

FLASH PHOTOGRAPHY

Flash-Off

13

Use this mode in situations where flash photography is not desired or is prohibited and in twilight or night scenes.



Closing the lens barrier restores the Auto Flash mode.

- Since a slow shutter speed (as low as 2 seconds) is selected, use a tripod to prevent camera shake.
- Have your subject stay still; otherwise, blurring may result.

FLASH PHOTOGRAPHY

Fill-In Flash

Use this mode to compensate for a shadow cast on the subject's face or to shoot in backlit conditions or under fluorescent light.



Closing the lens barrier restores the Auto Flash mode.

- Make sure your subject is within the flash working range (p.12).
- Fill-in flash becomes ineffective in extremely bright conditions.

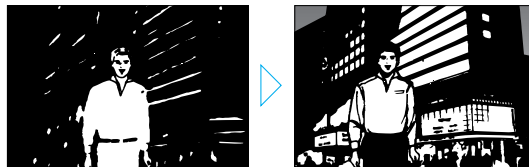


14

FLASH PHOTOGRAPHY

Night Scene Flash

Use this mode to clearly shoot a subject in the foreground and a night scene in the background.



Closing the lens barrier restores the Auto Flash mode.

- Since a slow shutter speed (as low as 4 seconds) is selected both in the Night Scene Flash and Red-Eye Reduction Night Scene Flash modes, use a tripod to prevent camera shake.
- This mode cannot be combined with the Spot Metering mode.

FLASH PHOTOGRAPHY

Red-Eye Reduction Night Scene Flash

Use this mode to take pictures of people with a night scene background while reducing “red-eye.” Except for the pre-flashes, this mode is the same as the Night Scene Flash mode.



Closing the lens barrier restores the Auto Flash mode.

- Since a slow shutter speed (as low as 4 seconds) is selected both in the Night Scene Flash and Red-Eye Reduction Night Scene Flash modes, use a tripod to prevent camera shake.
- This mode cannot be combined with the Spot Metering mode.

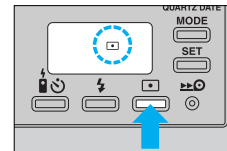


EXPOSURE MODES

Setting the Exposure Mode

15

This camera has four exposure modes. Choose the mode that best suits the conditions and your requirements.



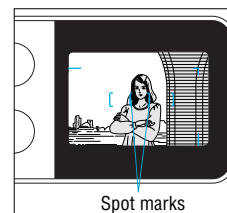
How to select the mode

Press the flash exposure button (). The mode switches in the order shown below. The selected mode is displayed on the LCD panel.

Mode display	Exposure mode	Function
No display	Auto Exposure	Use this mode in ordinary situations.
	Spot Metering	To precisely set the focus and exposure for each subject.
	Backlight Compensation	To shoot a backlit subject.
	Infinity	To shoot scenery through a window.

Spot Metering

Position the spot marks on the area where you want to measure the light.



Closing the lens barrier restores the Auto Exposure mode.





16

Backlight Compensation

This mode is useful when your subject is backlit or when there is a white background (such as a snow-covered landscape) behind your subject. The foreground will also be rendered brightly.



Exposure is compensated to +1.5 EV overexposure to normal.

Closing the lens barrier restores the Auto Exposure mode.

Infinity

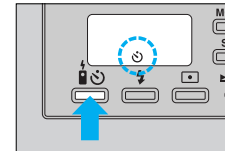
The camera automatically sets the working distance at infinity.



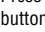
The flash does not fire except in the Fill-In Flash mode.



Closing the lens barrier restores the Auto Exposure mode.

USING THE SELFTIMER/REMOTE CONTROL 17



How to select the mode

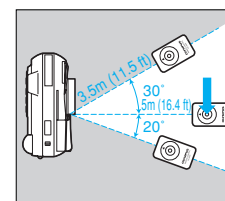
Press the selftimer/remote control button () . The mode switches in the order shown below. The selected mode is displayed on the LCD panel.

Mode display	Mode
No display	
	Selftimer
	Remote Control

Selftimer

Secure the camera on a tripod or other support. Compose your shot in the viewfinder. Press the shutter release button halfway (the focus and exposure are locked at this time). Then press the shutter release button all the way. The selftimer indicator lights for about 10 seconds and then blinks for about 2 seconds. After this, the shutter will release.

Remote Control (Optional)



Compose your shot in the viewfinder. Position the autofocus frame on your subject. To take a picture, point the remote control at the camera and press the button on the remote control. The selftimer/remote control indicator starts blinking, and the shutter will release about 3 seconds later.



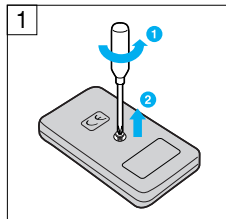


18

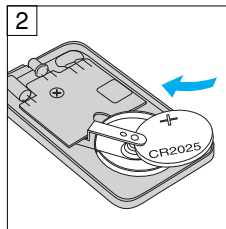
RC-300C (Optional)

If the selftimer/remote control indicator doesn't blink even when you press the button, replace the battery with a new one (CR2025).

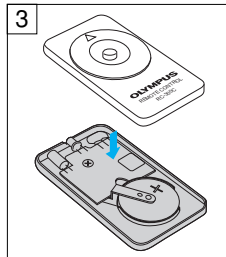
How to replace the battery of the remote control (RC-300C)



1. Turn the screw on the bottom of the remote control counterclockwise to loosen.



2. Turn the remote control over, and remove the cover. With the battery facing up, remove the old battery and insert a new battery as shown.

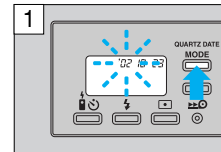


3. Replace the cover, turn the remote control over, and turn the screw on the bottom clockwise to tighten.

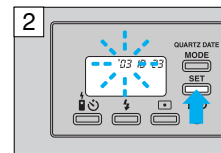
CORRECTING THE DATE AND TIME (Quartzdate models only)

19

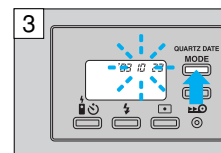
Be sure to correct the date and time after the batteries have been inserted or replaced.



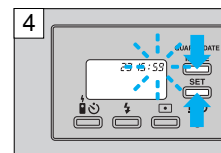
1. Keep the **MODE** button pressed until the "year" indicator starts blinking.



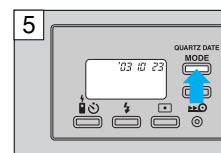
2. Press the **SET** button to adjust the "year" indicator. If you press the button once, the number on the display will advance by 1. If you keep the button pressed, the numbers will run in rapid succession. If you pass the intended number, keep pressing to return to that number.



3. Press the **MODE** button once more to make the "month" indicator blink. Press the **SET** button to adjust the "month" indicator. As you press the **MODE** button, the blinking indicator changes in the order of "year", "month", "day", "hour" and "minute".



4. Repeat Steps 2 and 3 to set "hour" and "minute". Make sure the "minute" indicator is blinking.



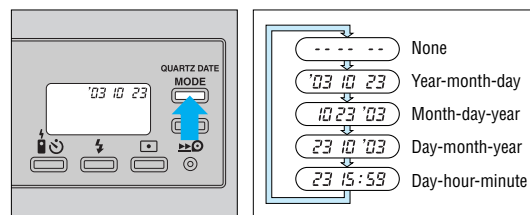
5. When "minute" has been set, press the **MODE** button. None of the indicators will be blinking and date/time correction is now complete.



20

PRINTING THE DATE/TIME (Quartzdate models only)

First select the date/time mode you want to print.



Press the **MODE** button. As you press it, the mode will switch in the order shown below.

Keep the mode you want to print displayed.

- The date unit uses the same power source as the main unit.
- Be sure to correct the date and time after the batteries are replaced.
- The date/time is imprinted in the lower right corner of the picture.
- If the date/time is superimposed on a bright color like white, orange, yellow, etc., it may be difficult to read.
- The date/time may not be imprinted correctly on the frame(s) after the specified final exposure of the film.
- When black-and-white film is used, the date/time may not be printed.

CARE AND STORAGE

21

- Do not leave the camera in any place exposed to excessive heat, humidity or direct sunlight — for example, in a car or on the beach.
- Do not expose the camera to formalin or naphthalene.
- If the camera gets wet, wipe it with a dry towel. The salt in seawater can be especially damaging.
- Do not use organic solvents such as alcohol or paint thinner when cleaning the camera.
- Do not leave the camera on or near a television, refrigerator or other appliance with a magnetic field.
- Do not expose the camera to dust or sand as this could cause serious damage.
- Do not shake the camera.
- Do not apply excessive force to the zoom lens.
- Do not expose the camera to extreme heat (over 40°C/104°F) or to extreme cold (below -10°C/14°F). Low temperatures, even within this range may sometimes cause deterioration in battery performance, temporarily disabling the camera.
- Avoid leaving the camera unused for long periods of time. This can cause mold to grow on the camera as well as other problems. Try to press the shutter release button and check the operation of the camera before use.
- Some airport X-ray machines can damage the film in your camera. Try to avoid passing your camera through these machines. Give it to the security officer for manual inspection.
- Do not touch the front surface of the flash after using it continuously over a short period as the surface may be hot.





22

SPECIFICATIONS

23

Type:	Fully automatic 35 mm autofocus lens-shutter camera with built-in 38 ~ 105 mm zoom lens.
Film format:	35 mm standard DX-coded film (24 x 36 mm).
Lens:	Olympus lens, 38 ~ 105 mm, F5.6 ~ 11.3, 8 elements in 7 groups.
Shutter:	Programmed electronic shutter.
Viewfinder:	Real image zoom viewfinder [with autofocus marks, close-up correction marks, green lamp (autofocus indicator) and orange lamp (flash indicator)].
Focusing:	Multi-wide advanced combination autofocus system (max. 11 points). Focus lock possible. Focusing range: 0.6 m (2.0 ft) ~ ∞ (infinity) at telephoto, 0.8 m (2.6 ft) ~ ∞ (infinity) at wide angle.
Exposure control:	Programmed automatic exposure control, 3-zone light metering. Auto exposure range: EV3 (F5.6, 4-sec) ~ EV16 (F10.8, 1/570-sec) at wide angle, EV5 (F11.3, 4-sec) ~ EV17 (F17, 1/430-sec) at telephoto.
Exposure counter:	Progressive type displayed on LCD panel.
Selftimer:	Electronic selftimer with approx. 12-sec. delay.
Remote control:	Infrared remote control unit with approx. 3-sec. delay.
Film speed range:	Automatic setting with DX-coded film (ISO50, 100, 200, 400, 800, 1600 or 3200). Other intermediate film speeds will be automatically set for next lower speed. Non-DX-coded film is set at ISO100.
Film loading:	Automatic loading. (Automatically advances to first frame when camera back is closed.)
Film advance:	Automatic film winding.
Film rewind:	Automatic film rewind (automatic rewind activation at end of film, automatic rewind stop). Rewind possible at any point with mid-roll rewind button.
Flash:	Built-in flash. Recycling time: Approx. 0.5 ~ 6.0 sec. (at normal temperature, with new battery). Flash working range: 0.8 ~ 3.2 m (2.6 ~ 10.5 ft) at wide angle and 0.6 ~ 1.6 m (2.0 ~ 5.2 ft) at telephoto with ISO 100 color negative film; 0.8 ~ 6.4 m (2.6 ~ 21.0 ft) at wide angle and 0.6 ~ 3.2 m (2.0 ~ 10.5 ft) at telephoto with ISO400 color negative film.

Flash modes:	Auto Flash (automatic flash activation in low-light, backlight and fluorescent light), Red-Eye Reduction Flash (same as auto otherwise), Flash-Off (flash override with shutter speed extended to 2-sec. max.), Fill-In (forced activation), Night Scene flash (with shutter speed extended to 4-sec. max.) and Red-Eye Reduction Night Scene Flash (with shutter speed extended to 4-sec. max.)
Exposure modes:	Auto Exposure, Spot Metering, Backlight Compensation and Infinity.
Battery check:	Displayed on LCD panel.
Power source:	One 3 V lithium battery (CR2).
Dimensions:	101 (W) x 57 (H) x 42 (D) mm (4.0 x 2.2 x 1.7 in).
Weight:	210 g (7.4 oz) (without battery) .
Other:	All-weather design.

■ Date Unit Specifications (Quartzdate model)

Types of data recording:	(1) None. (2) Year-month-day. (3) Month-day-year. (4) Day-month-year. (5) Day-hour-minute.
External display of recorded data:	Continuous LCD panel display.
Automatic calendar function:	To year 2035.

■ Remote Control Specifications (Optional)

Remote control system:	Infrared.
Power source:	One CR2025 battery.
Battery life:	Approx. 5 years.
Usage:	Approx. 20,000 times.
Working distance:	Approx. 5 m (16.4 ft).
Dimensions:	56.5 (W) x 35.0 (H) x 6.5 (D) mm (2.2 x 1.4 x 0.3 in).
Weight:	11 g (0.4 oz) (without battery).

SPECIFICATIONS ARE SUBJECT TO CHANGE WITHOUT NOTICE OR OBLIGATION ON THE PART OF THE MANUFACTURER. THE ACTUAL PRODUCT MAY DIFFER FROM ONES SHOWN IN THIS MANUAL.

