



# Engineered for High-Volume, Fast-Paced Business Applications



With deadlines and timelines becoming increasingly compressed, the speed, efficiency and reliability of your office machines are absolutely critical. The OKIFAX<sup>®</sup> 5700 was engineered to meet the demanding needs in today's fast-paced business world, featuring proprietary OKI<sup>®</sup> Digital LED Printing Technology for superior performance and unmatched

reliability. It's ideal for medium to large workgroups that need higher speed and greater throughput.

Among its impressive list of standard features is its modem, rated at 33.6 Kbps, which enables the OKIFAX 5700 to transmit a page in only 3 seconds! That saves you time while lowering telephone costs. Its 2.5 MB standard memory lets you scan and store up to 200 pages (upgradeable to 520 pages)—especially important if the paper supply runs out. You can even delay transmission to a later time when rates are even lower. Should the power go out, its 72-hour memory backup ensures your document isn't lost, even over a weekend.

Dual access capability further improves productivity by allowing two tasks to be handled simultaneously, such as scanning a document while another is being received. Save even more time by placing up to 50 pages in the automatic document feeder, entering dialing instructions and walking away. Its instant dial feature

saves you even more time by transmitting a multipage document as soon as a connection is made—no waiting for all pages to be scanned.

## Ease of use that's hard to beat

Using the OKIFAX 5700's advanced functions is incredibly simple. Program up to 40 destinations that can be dialed with the push of a single button, and 100 more with two. Need to send a document to different locations? Group dialing streamlines the process, storing any combination of 140 locations into 20 groups. And with its familiar QWERTY-style keypad, input and programming is easy.

## Innovative features that enhance workflow

There's more to the OKIFAX 5700 than exceptional fax capabilities. It's also a handy desktop copier, able to create up to 99 copies from a single original at 10 pages per minute.

You can also turn the OKIFAX 5700 into a true multifunction machine. Add the optional Printer Interface Kit with JetSuite<sup>®</sup> Pro document management software, and the OKIFAX 5700 becomes a professional-quality, 600-dpi, 10 page-per-minute printer. The standard 250-sheet paper capacity, which can be further expanded to 750 sheets, saves time and hassle by reducing the need to replenish paper as often.

The OKIFAX 5700. It's the smart choice for any fast-paced business office.

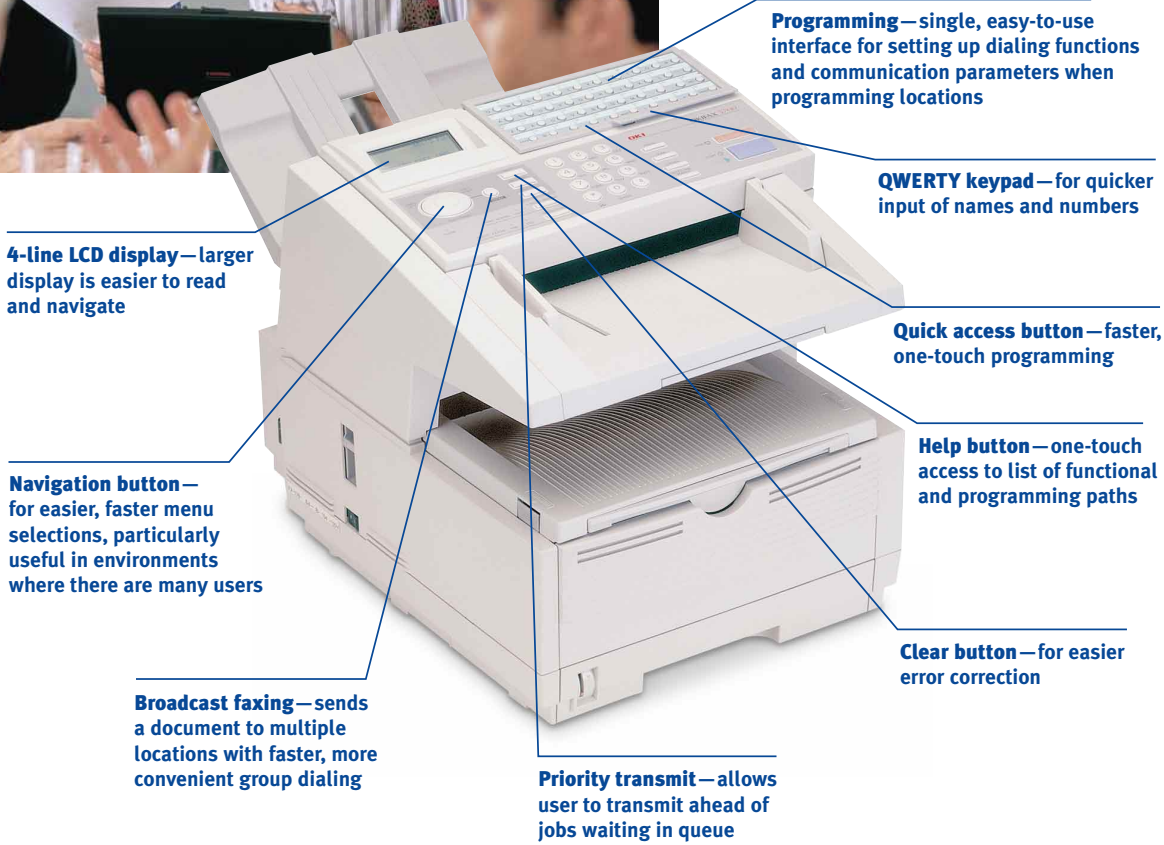
Perfectly suited  
for medium-  
to high-volume  
workgroups.

# Streamline operation with both standard and optional features.



## The workgroup facsimile anyone can use

If you can push a button, you can access the full potential of the OKIFAX® 5700. It was designed to be intuitive and user-friendly with push-button simplicity so anyone in your office can realize its benefits quickly and easily.



## Add JetSuite® Pro for easy, intuitive document management

The JetSuite Pro option gives you the means to modify and manage your documents. Its intuitive, user-friendly graphical interface makes it easy for you to further enhance the capabilities of the OKIFAX® 5700 directly from your PC, thereby achieving even higher levels of functionality and efficiency.

JetSuite Pro smoothly integrates a variety of tasks in one PC interface with drag-and-drop simplicity. It's easier to install, use and maintain than a mix of function-specific and often incompatible applications.

JetSuite Pro software lets you:

### Communicate more effectively and efficiently

- Identify, organize, manipulate, manage, annotate and distribute all of your documents electronically.
- Send and receive faxes directly from your PC. You can even schedule faxes for later transmission, to one person or broadcast to a group.

### Simplify database management

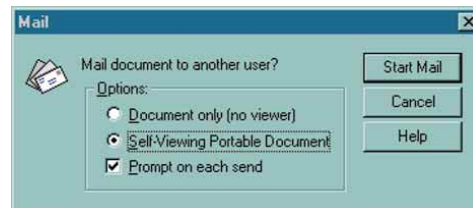
- Store and manage names and fax numbers, create distribution groups, and import database lists from other sources.

## Scan and edit documents with ease

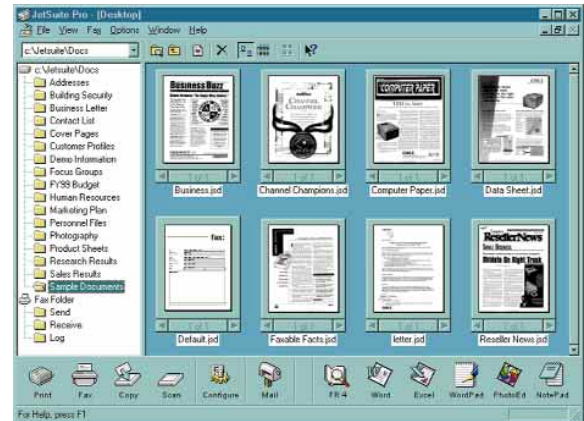
- Scan a document into a file quickly and easily, where it can be edited, stored, printed, copied or faxed. JetSuite Pro utilizes industry-standard TWAIN scanning technology for optimum compatibility.
- Scan and edit text with the supplied Optical Character Recognition (OCR) application...no retyping necessary.

## JetSuite Pro and OKIFAX 5700: smooth integration, smooth communication

The multiple functions and powerful features of JetSuite Pro turn the state-of-the-art OKIFAX 5700 into an out-of-this-world multifunction machine. And because it's easy to set up and easy to use, you can maximize your investment with minimal effort.



JetSuite Pro documents can be e-mailed, opened, viewed and printed by anyone using Windows® version 3.1 or later, even if they don't have JetSuite Pro.



JetSuite Pro software gives you a powerful document management and communications solution with point-and-click simplicity.



## Technology-driven reliability. Industry-leading support.

Driving the performance of the OKIFAX® 5700 is OKI® Digital LED Printing Technology.

Unlike lasers, which print through a complicated series of rotating mirrors and moving parts, the OKI printing process uses flashing pin-point beams of light that go straight to the image drum. All rock-solid state. It's simply a more sensible and efficient technology: Digital LED Printing. Simply Smarter Than Laser.™



Your highly qualified Authorized OKI Facsimile Dealer is a true business resource, who can be relied on for excellent service, advice and the right productivity solutions as your needs grow and change.

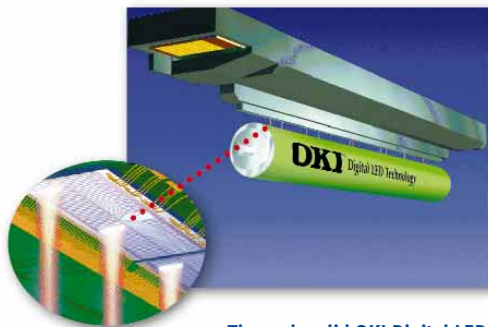
Customer service for OKI facsimile and multifunction products is also available 7 days a week, 24 hours a day<sup>2</sup> by dialing **1-800-OKIDATA (800-654-3282)**.

Plus, Okidata has a comprehensive fax-back system and a dynamic Web site, for support few fax manufacturers can match.

For more information on the OKIFAX 5700 or other OKI products, visit our Web site at [www.okidata.com](http://www.okidata.com). Or, for the OKI dealer nearest you, call **1-800-OKIDATA**.

### Reliability to count on

Because it's so reliable, OKI backs your OKIFAX 5700 facsimile with a 1-year limited warranty on parts, 90 days on labor and *the industry's only 5-year LED printhead warranty*.



The rock-solid OKI Digital LED printhead utilizes a stationary array of pulsing light-emitting diodes (detail) to create high-resolution text and graphics.

To Contact Okidata Americas, Inc.:  
In USA: 2000 Bishops Gate Blvd.  
Mount Laurel, NJ 08054-4620  
Tel: 800.OKIDATA (800.654.3282)  
Fax: 856.222.5320

In Canada: 2735 Matheson Blvd. East  
Mississauga, Ontario L4W 4M8  
Tel: 905.238.4250  
Fax: 905.238.4421

Okidata Americas, Inc. (División Internacional):  
2000 Bishops Gate Blvd.  
Mount Laurel, NJ 08054-4620  
Tel: 856.231.0002  
Fax: 856.222.5071

Web Site: [www.okidata.com](http://www.okidata.com)

# OKIFAX® 5700

## PLAIN PAPER FACSIMILE

### Technology

**Modem Speeds (Kbps):** 33.6

**Transmission Speed:** 3 seconds per page<sup>1</sup>

**Print Method:** Light Emitting Diode (LED) on an electrophotographic image drum

**Print Speed:** 10 pages per minute

**Print Resolution:** 600 dpi

**Memory:** 2.5 MB (up to 200 pgs.) standard; Optional memory expansion cards, 2 MB and 4 MB (up to 520 pgs: total)

**Memory Backup:** 72 hours battery backup

**Transmit Resolution:** 300 dpi

**Gray Scale:** 64 levels

**Image Separation:** Error diffusion

### Dialing Capabilities

**Programmable Speed Dialing:** 40 one-touch, 100 two-digit auto dials; 20 groups (up to 140 locations each)

### Paper Handling

**Paper Supply:** 250-sheet letter/legal (adjustable) paper cassette standard; Optional 500-sheet letter/legal tray

**Print Paper Type:** 20 lb. bond recommended

**Automatic Document Feeder:** Up to 50 sheets

**Original Document Size (W x L):**

Maximum: 8.5"x unlimited length; Minimum: 5.8"x 5"

**Document Scan Width:** 8.47" transmit; 8.32" local copier

### Other Features

Instant dial; Dual access; 3-sec./pg. scan speed; Automatic legal to letter reduction (includes automatic page breaks); Delayed transmission; Memory transmission; Broadcast; Confidential or Bulletin polling mailboxes (16); Copy mode; Alphabetic-search telephone directory; Fax/telephone switch; Auto redial; Out-of-paper or toner reception; Polling; Telephone answering device (TAD) interface; ECM; Forwarding; Distinctive ring; Year 2000 compliant (4-digits)

Management reports: Message confirm (LCD or printout), Activity, Configurations, Phone directory, Broadcast, Error, Polling

### Specifications and Warranty

**Dimensions (HxWxD):** 13.9"x14.2"x18.6"  
(35.3 cm x 36.1 cm x 47.2 cm)

**Weight:** 30.9 lb. (14.0 kg)

**Power Requirements:** 120VAC ±10%, 50-60 Hz

**Standby Mode:** 12 watts

**Limited Warranty:** 90-days on-site service; 1 year parts; 5 years LED printhead

### Ordering Information (Part Number)

#### Facsimile:

OKIFAX 5700, 120V (Eng)	62210501
OKIFAX 5700, 120V (Span/Eng)	62210502

#### Supplies:

Kit: Toner Cartridge	40815606
Kit: Image Drum	40433308

#### Options:

Kit: 2MB Memory Expansion	40755302
Kit: 4MB Memory Expansion	40755312
Kit: 500-sheet 2" Paper Tray	70029401
Kit: Handset Option	70031801
Kit: MFP Option	70035301

<sup>1</sup>Based on ITU-T Test Chart #1.

<sup>2</sup>Available in U.S.A. and Canada only.

All specifications subject to change without notice.

©1999 Okidata Americas, Inc. OKI Reg. T.M., M.D., M.R., OKIFAX Reg. T.M., People to People Technology and design T.M., Oki Electric Industry Co., Ltd.; 7-Day/24-Hour logo, "Digital LED Printing. Simply Smarter Than Laser." T.M., Okidata Americas, Inc.; JetSuite Reg. T.M., eFax.com; Windows Reg. T.M., Microsoft Corporation; Energy Star Reg. T.M., U.S. EPA.

Printed in the U.S.

4-digit Y2K compliant

