

# STEP 1

## SET UP YOUR DIGITAL VIDEO RECORDER FIRST



### BASIC INSTALLATION GUIDE

Time



Under 10 Minutes\*  
\* Installation time may vary based on application and camera cabling

Tools



Hand Tools

Skills - Easy



Plug & Play connectors, On screen set up



**1**

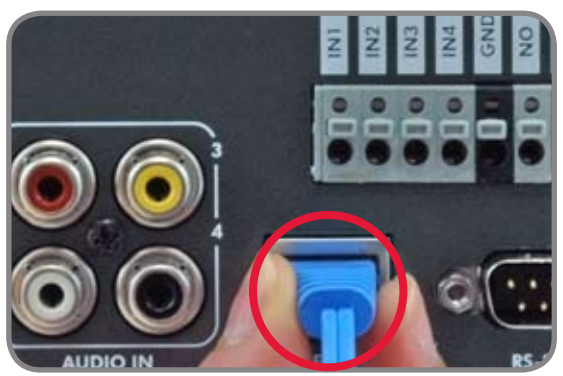
#### Connect Cameras & Monitor (not included) to the DVR:

Connect the first camera to the CH1 input. Follow the same steps to connect the additional cameras\*.

\* NOTE: Test the cameras prior to selecting a permanent mounting location by temporarily connecting the Cameras and Cables to your DVR.



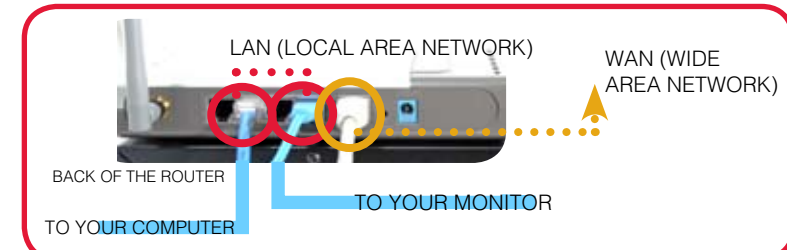
Connect a CCTV monitor to the Monitor OUT (Composite OUT) port to view camera images.



**2**

#### Connect Ethernet Cable:

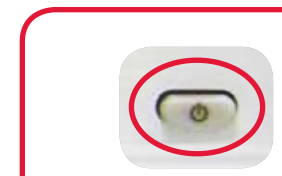
Connect one end of the ethernet cable to one of the router's (not included) LAN PORTS and the other end to DVR's Network Port located at the back of the DVR. See picture below showing a generic LAN/WAN connection.



**3**

#### Connect Power Cable:

Connect one end of the Power cable to the DVR, the other end to an electrical outlet. This unit powers ON once it is plugged in to the power outlet.



**PUSH THE POWER BUTTON TO TURN ON THE DVR**

DVR FRONT PANEL - POWER BUTTON



**4**

#### Set the Time and Date\*\*\*:

Click the MENU button from the front panel of the DVR (or the remote control) to enter SYSTEM SETUP and press ENTER to go to MAIN MENU. From the MAIN MENU Scroll down to SYSTEM and press ENTER to go to the DATE/TIME MENU. Press ENTER while on DATE/TIME MENU to activate menu options.

MAKE SURE THAT THE DATE AND TIME ARE SET PRIOR TO RECORDING!

\*\*\* Note: If the Date/Time is set into the past, a message will appear warning that Overlapped date(s) will be erased.

**Congratulations! You have completed STEP 1 successfully. Your DVR is now ready to use. Refer to the owner's manual to learn how to record, playback, use the search features and all other features available with this system.**

**Refer to Step 3 for Setting Up Remote Security Monitoring.**

**5**

#### Connect PC Monitor (not included) to DVR VGA Output:

To view the video from your DVR on a PC monitor, connect the VGA Connector Cable from the PC Monitor to the VGA Port located at the back of the DVR.

**OPTIONAL**



Digital Video Recorder\*

#### NAVIGATION CONTROLS:

##### Virtual Keyboard Control:

The Virtual Keyboard control becomes available when keyboard input (A-Z, 0-9) is needed for entering information such as Names, Network Information, etc.

- Navigate using the arrow keys on the Front Panel or Remote Control.
- Use the ENTER key to choose the letters and numbers.
- Select the APPLY button once the setup is completed.

##### DVR Menu - Navigation Controls:

- Navigation Controls:** Move UP/DOWN/LEFT/RIGHT
- Return Button:** Complete modifications of a menu option; exit a menu
- Enter Button:** Press this button to select and change the values in a menu option

##### Active Option Indicator:

- Orange Highlight - Indicates that the option is in active editing mode.
- Green Highlight - Indicates that the option is available for editing. Once the option is highlighted, press the ENTER key to edit the option (highlight changes to Orange).

##### USB Ports:

Provides connection ports for USB Flash Drives (thumbsticks), USB Hard Drives and Optional Mouse (not included).

**BROADBAND ROUTER AND COMPUTERS ARE REQUIRED (FOR LOCAL AND REMOTE MONITORING), NOT INCLUDED.**

**FOR DETAILED SETUP INFORMATION, PLEASE REFER TO YOUR USER'S MANUAL.**

**\*CHANNEL/ PORT CONFIGURATION AND HDD (HARD DISK DRIVE) CAPACITY MAY VARY BY MODEL. CHECK YOUR PACKAGE FOR SPECIFIC CONTENT INFORMATION.**




Information in this document is subject to change without notice. As our products are subject to continuous improvement, Lorex Technology INC. and our subsidiaries reserve the right to modify product design, specifications and prices, without notice and without incurring any obligation. E&OE © 2007 LOREX. All rights reserved.



# STEP 2

## SET UP LOCAL VIEWING ON YOUR PC

### BASIC INSTALLATION GUIDE

<p>Time</p>  <p>Under 30 Minutes*</p> <p><small>* Installation time may vary based on application</small></p>	<p>Hardware</p>  <p>Computer &amp; Router*</p> <p><small>* Minimum System Requirement: Windows XP, Pentium IV, 256MB Ram (512MB Recommended), 200MB Storage, Internet, DSL or Cable Modem</small></p>	<p>Skills - Intermediate</p>  <p>Plug &amp; Play connectors, On screen set up</p>
--	--	--

**Your DVR must be connected to a Router prior to powering it ON**

**1**

#### Retrieve System Information:

To retrieve the System Information, press the ENTER button on the Remote Control (ensure batteries are inserted) (OR) Press the ENTER button on the front panel of the DVR (please check the user's manual for MENU steps).



REMOTE CONTROL



DVR FRONT PANEL - ENTER BUTTON

**Record the IP and MAC Addresses in the section below:**

**IP ADDRESS :** \_\_\_\_\_ . \_\_\_\_\_ . \_\_\_\_\_ . \_\_\_\_\_

**MAC ADDRESS :** \_\_\_\_\_ : \_\_\_\_\_ : \_\_\_\_\_ : \_\_\_\_\_ : \_\_\_\_\_ : \_\_\_\_\_

(needed to register for DDNS)

**2**

#### Install Software:

**(on your Local Computer)**

Insert the Lorex Client Software CD into your local computer's CD ROM drive and proceed with installation.



COMPUTER - NOT INCLUDED

**3**

#### Lorex Client Software:

**(on your Local Computer)**

Follow the installation screens to complete Lorex Client Software installation.



**4**

#### Lorex Client Software:

**(on your Local Computer)**

Close the CD Menu Screen. A Lorex Client icon and a Lorex Player icon will appear on your desktop.



**5**

#### Run the Lorex Client Software:

**(on your Local Computer)**

Double-click the Lorex Client software icon on your desktop to run the program.



**STEP 2**  
Continued

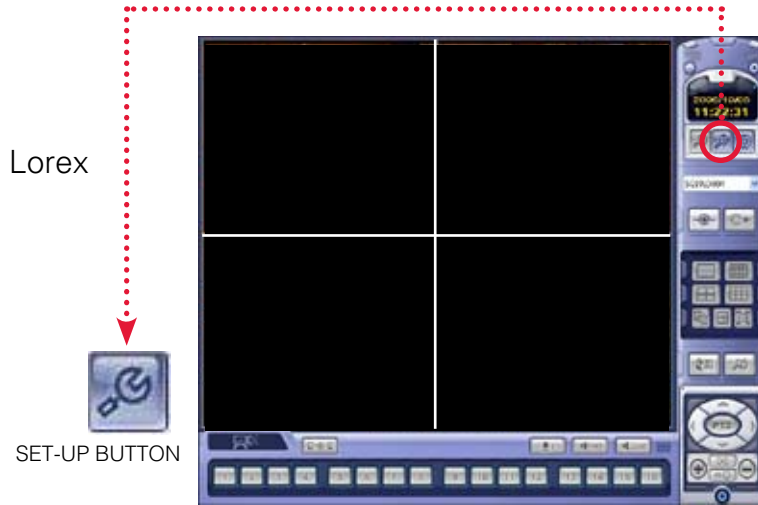
# SET UP LOCAL VIEWING ON YOUR PC

**6**

**Set-up:**

(on your Local Computer)

Click the Setup icon from the Lorex Client Software Screen

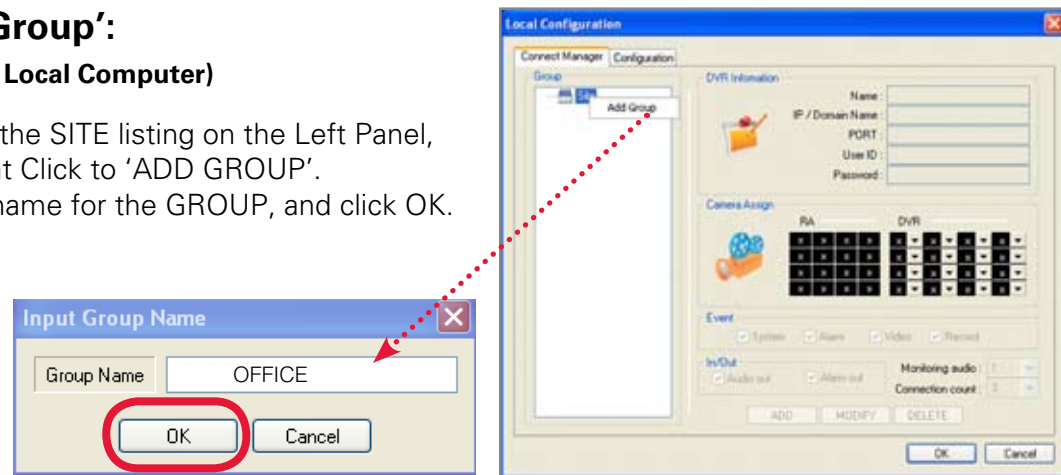


**7**

**Add 'Group':**

(on your Local Computer)

Click on the SITE listing on the Left Panel, and Right Click to 'ADD GROUP'. Enter a name for the GROUP, and click OK.

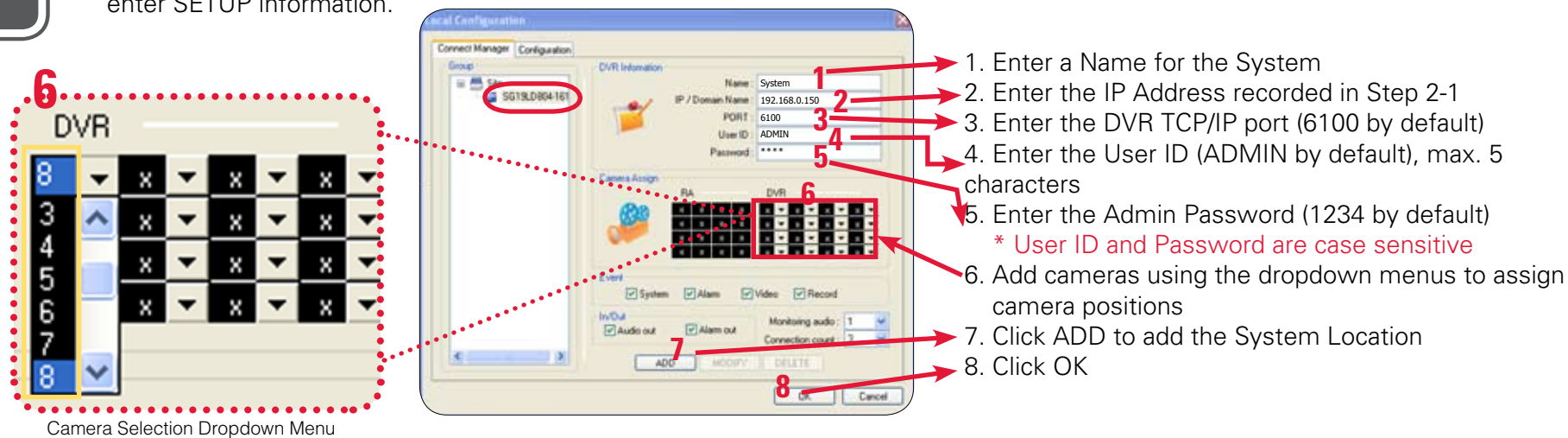


**8**

**Enter Setup Information:**

(on your Local Computer)

Select the GROUP you created and enter SETUP information.

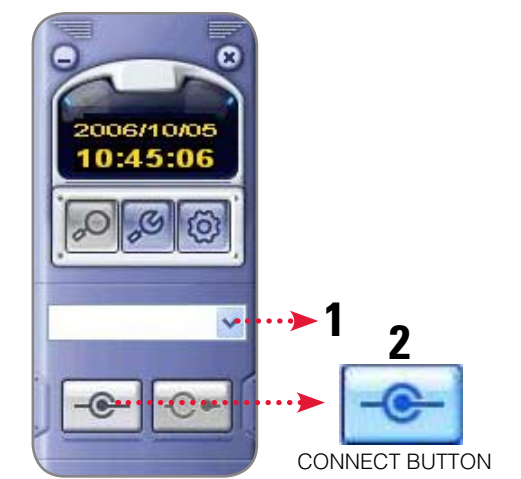


**9**

**Lorex Client Software - Local Configuration:**

(on your Local Computer)

From the Lorex Client Software - Local Configuration screen (as shown in Step 7), select the new Group you created using the drop down menu (1) and press the CONNECT button (2) to connect to the LOCAL LIVE site.



LOCAL LIVE SITE



### 1

#### Port Forward Your Router:

Port forward your router first before proceeding with the set-up (you must forward web port 80 and TCP/IP Port 6100).

All routers are different. To port forward your router, please refer to your router's user's manual.

A Router Configuration Guide is available on your Lorex Client Software CD and also on our website in the Consumer Guide's section.

### 2

#### DDNS Set-up:

Open your web browser (Internet Explorer by default) and enter <http://ddns.strategicvista.net> in the address bar.

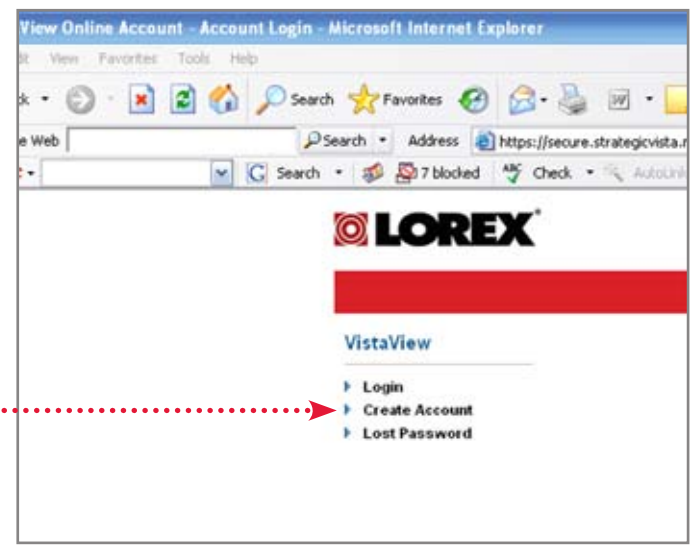


### 3

#### Create Account:

From the <http://ddns.strategicvista.net> website, click the CREATE ACCOUNT option.

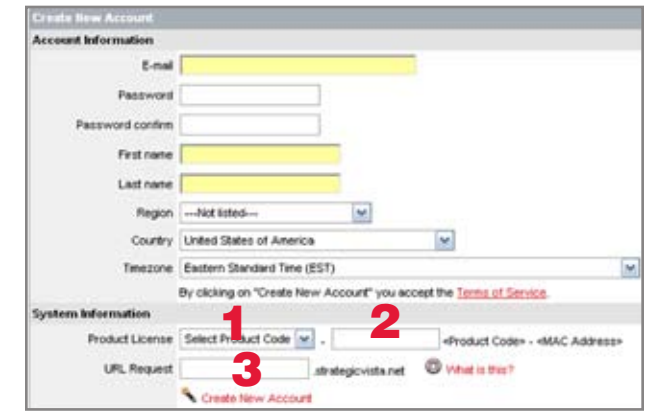
**Create Account**



### 4

#### Complete New Account Information:

1. FOR PRODUCT LICENSE select the L500 Series option from the drop down menu.
2. FOR PRODUCT CODE enter the DVR's MAC address (recorded in step 2, section 1).
3. FOR URL REQUEST enter a unique URL name (e.g. tomsmith1). Note: URL name should not be more than 15 characters.



### 5

#### Registration Email:

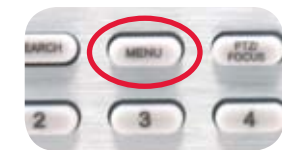
An automated REGISTRATION CONFIRMATION EMAIL will be sent to your email. Print and Save this confirmation. You will need this information to access your System remotely.

**Service Provider:** [dns1.strategicvista.net](http://dns1.strategicvista.net)  
**Domain Name:** [tomsmith.strategicvista.net](http://tomsmith.strategicvista.net)  
**User ID:** tomsmith1  
**Password:** (your password)

### 6

#### Enter DDNS Set-up on your DVR:

Enter DDNS SET option on your DVR by pressing the MENU button on the front panel of your DVR (or Remote Control). Select the SYSTEM SETUP and press ENTER. Scroll down to SYSTEM and press ENTER. Scroll down to NETWORK option and press ENTER.



DVR FRONT PANEL - SETUP BUTTON



**STEP 3**  
Continued

# SET UP INTERNET REMOTE SECURITY MONITORING

**7**

**Enable DDNS Settings:**

On the NETWORK menu, use the DOWN arrow key to navigate to DDNS. Highlight DDNS checkbox by pressing ENTER and press the UP arrow key to put a check mark in the DDNS checkbox. Press ENTER to accept settings.



**8**

**Set the DDNS Settings:**

1. Scroll down to the DDNS SERVER within the NETWORK menu and press ENTER.
2. Enter the USER ID sent to you in the REGISTRATION CONFIRMATION EMAIL.
3. Enter the DOMAIN NAME sent to you in the REGISTRATION CONFIRMATION EMAIL (i.e. tomsmith.strategicvista.net) leaving out the .strategicvista.net part of the URL.
4. Enter your PASSWORD (from the DDNS Registration Email sent to you).
5. Click the DDNS Status button - A SUCCESS message will appear if the settings are correct.
6. Scroll to OK button and press ENTER to accept.
7. On the SYSTEM menu screen scroll down to APPLY and press ENTER.
8. The system will now ask you to RESTART. Click OK.



**9**

**Install Software:**

**(on your Remote Computer\*)**

Insert the Lorex Client Software CD into your remote computer's CD ROM drive and proceed with installation.



\*For viewing your system from a remote location

COMPUTER - NOT INCLUDED

**10**

**Lorex Client Software:**

**(on your Remote Computer\*)**

Follow the installation screens to complete Lorex Client Software installation.

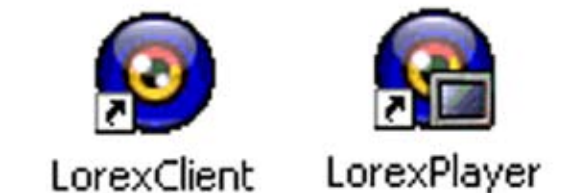


**11**

**Lorex Client Software:**

**(on your Remote Computer\*)**

Close the CD Menu Screen. A Lorex Client icon and a Lorex Player icon will appear on your desktop.



**12**

**Run the Lorex Client Software:**

**(on your Remote Computer\*)**

Double-click the Lorex Client icon on your desktop to run the program.



**STEP 3**  
Continued

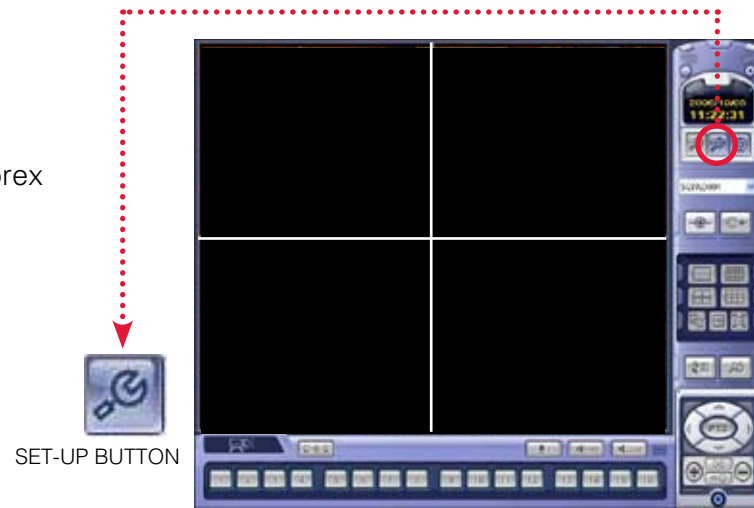
# SET UP INTERNET REMOTE SECURITY MONITORING

**13**

**Set-up:**

(on your Remote Computer\*)

Click the Setup icon from the Lorex Client Software Screen

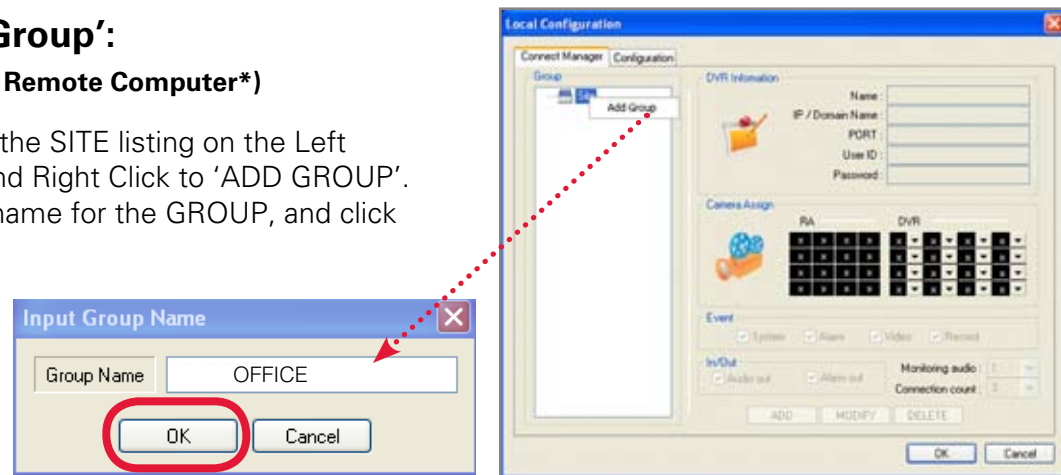


**14**

**Add 'Group':**

(on your Remote Computer\*)

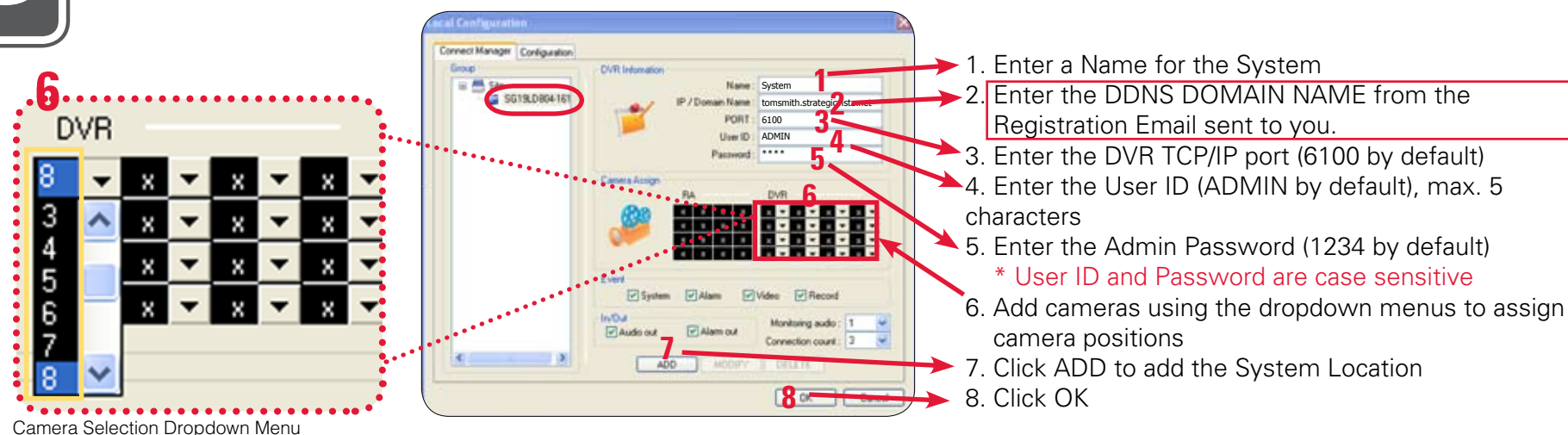
Click on the SITE listing on the Left Panel, and Right Click to 'ADD GROUP'. Enter a name for the GROUP, and click OK.



**15**

**Enter Setup Information:**

(on your Remote Computer\*)



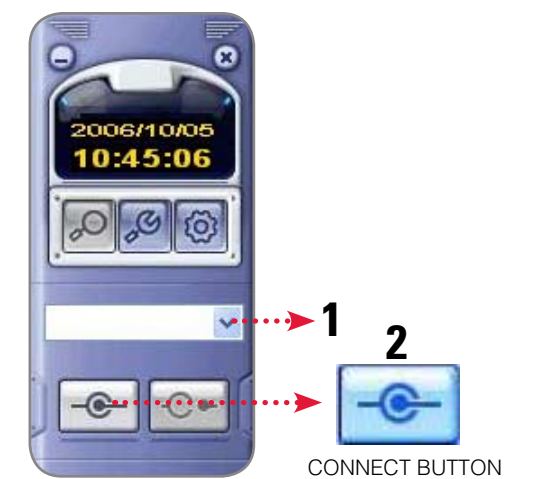
1. Enter a Name for the System
2. Enter the DDNS DOMAIN NAME from the Registration Email sent to you.
3. Enter the DVR TCP/IP port (6100 by default)
4. Enter the User ID (ADMIN by default), max. 5 characters
5. Enter the Admin Password (1234 by default)  
*\* User ID and Password are case sensitive*
6. Add cameras using the dropdown menus to assign camera positions
7. Click ADD to add the System Location
8. Click OK

**16**

**Lorex Client Software - Local Configuration:**

(on your Remote Computer\*)

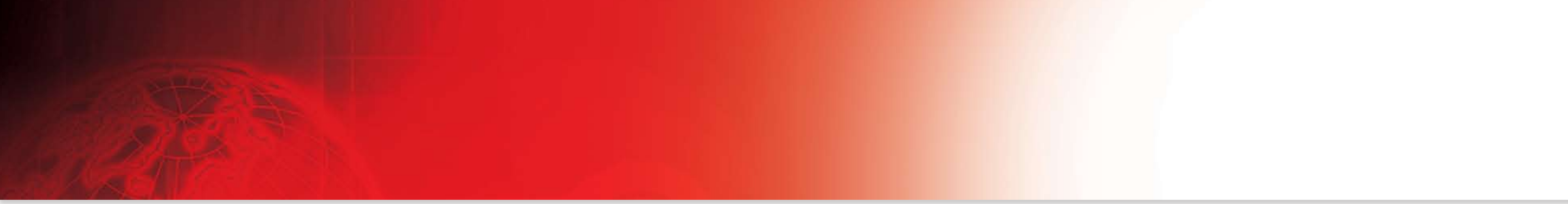
From the Lorex Client Software - Local Configuration screen (as shown in Step 13), select the new Group you created using the drop down menu (1) and press the CONNECT button (2) to connect to the REMOTE\* LIVE site.



\*For viewing your system from a remote location

For other remote access viewing features, please consult the Lorex Client Software Manual.





THIS PAGE IS INTENTIONALLY LEFT BLANK.

# IT'S ALL ON THE WEB

www.lorexcctv.com

For detailed setup information, please refer to your User's Manual. For additional information about determining your IP address, configuring your router, and port forwarding, please visit our website [www.lorexcctv.com/support](http://www.lorexcctv.com/support) and click **Consumer Guides Section** or view guides from the CD included with your system.

Email Support: [support@lorexcorp.com](mailto:support@lorexcorp.com)

Toll Free Technical Support - North America: 1-888-42 LOREX (1-888-425-6739)

Toll Free Technical Support - International (outside of North America): 00-800-425-6739-0

Lorex International Website - [www.lorexinternational.com](http://www.lorexinternational.com)



## Product Information



## Product Documentation

- Specification Sheet
- User's Manual
- Lorex Client Software Manual
- Quick Start Guide
- Portforwarding Guide
- Basics of Remote Video Access Guide



## Software/Hardware Updates & Upgrades