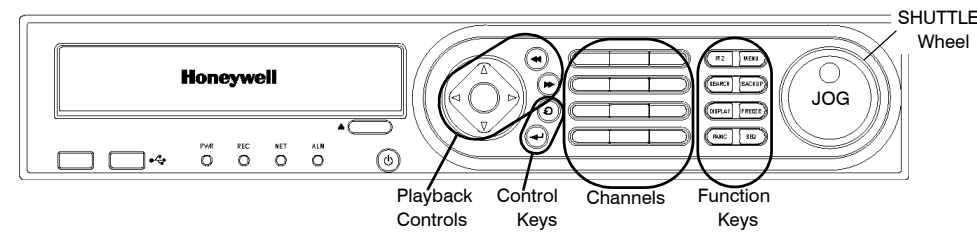


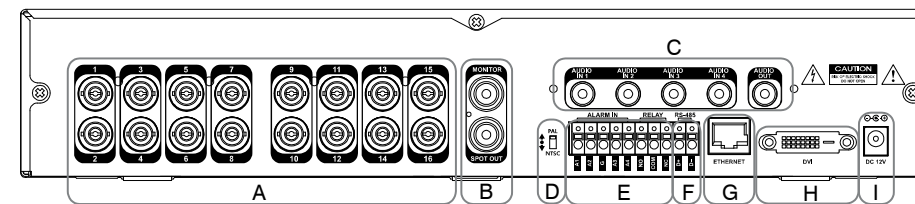
## HREP 4-, 8-, 16-Channel Color DVR Quick Install Guide

### Front Panel



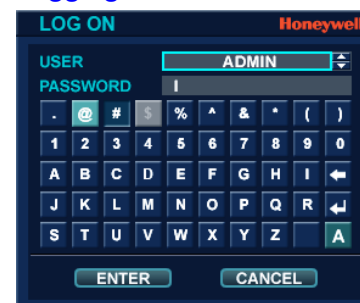
CONTROL GROUP	BUTTON/CONTROL	FUNCTION
Function Keys	PTZ	Selects PTZ mode in Live display.
	MENU	Displays the SETUP menus.
	SEARCH	Displays the SEARCH menu.
	DISPLAY	Selects various display modes in Live display and playback
Control Keys	CHANNEL SELECTION BUTTONS	Used to display individual channels in Live display and playback. They are also used to enter numeric passwords for logon screens.
	CURSOR KEY	Used to navigate the various menus.
	ENTER	Apply or select an item.
	RETURN	Cancel, or return to the previous menu.
Playback Control	Shuttle Wheel	Used to quickly adjust playback speed and direction. Also used to control camera zoom when in PTZ mode and digital zoom in Live display mode.
	JOG	When playback is paused, use <b>JOG</b> to move the footage forward or backward, frame by frame.
		Increases reverse playback speed.
		Selects reverse playback.
		Pauses/resumes playback.
		Selects forward playback.
		Increases forward playback speed.

### Rear Panel



GROUP	CONNECTION	DESCRIPTION
A	Camera Inputs	Connect up to 4/8/16 camera inputs, depending on your DVR.
B	Monitor and Spot Out	Connect the main BNC monitor and a BNC spot monitor.
C	Audio Inputs/Outputs	Connect up to 4 audio inputs and one audio output.
D	PAL/NTSC Switch	Change the camera input type.
E	Alarm Inputs/Relay Outputs	Connect up to 4 alarm inputs and configure them as high or low inputs with common ground. Connect one alarm output and configure it as high or low output with common ground.
F	RS485	Connect PTZ cameras or a keyboard controller.
G	LAN	LAN connection to a router or an internal network.
H	DVI	DVI main monitor connection to a PC monitor or compatible display. <b>Note</b> If you want to connect a VGA monitor, please use a DVI-to-VGA converter (supplied with DVR).
I	Power	Connect to a 12V/5A adapter (supplied).

### Getting Started Logging On



Logon to the system after the startup diagnostics have completed after applying power.

The default USER name is **ADMIN**. Use the Channel Selection buttons to enter the default PASSWORD, **1234**, then click **ENTER**.

### Navigating the LIVE Screen



#### LIVE Menu

- MENU** - Access to system or recording setup
- ARCH** - Enter Backup menu
- SEARCH** - Open SEARCH menu
- DISP** - Change the display mode/Split mode.
- PTZ** - Open PTZ control panel
- ZOOM** - Activate LIVE ZOOM
- LOG** - Open LIVE Log list with images.
- REC** - Start Panic Recording mode.

### Using the LIVE Mode Mouse Popup Menu



#### Mouse Menu

- FREEZE ON/OFF** - Freeze LIVE screen
- PTZ** - Turn On/Off PTZ mode
- ZOOM** - Start LIVE zoom
- PLAYBACK** - Start a quick search for the selected channel (Choose from 10, 20, and 30 seconds ago or 1 minute ago)
- PANIC REC START** - Start/stop Panic Recording mode

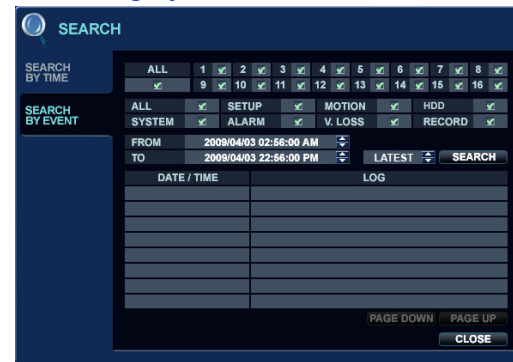
### Searching



#### Searching by Time

1. Click **SEARCH** on the LIVE screen.
2. Select **SEARCH BY TIME**.
3. Select a date on the calendar.
4. Select a timeline.
5. Select the playback mode: **PANO** (thumbnail-style playback) or **PLAY** (normal multi-channel playback).

## Searching by Event



1. Select **SEARCH BY EVENT**.
2. Select search event categories for the search.
3. Set a search START/END time.
4. Click **SEARCH**.
5. Double-click an event in the search query results list to play that clip.

## Playback Control



### Playback Controls

- A DISPLAY** - change multi-view mode
- B Playback Controls**
- C BACKUP** - start backup/archive to external device
- D RETURN** - exit from playback mode
- E Time indicator**

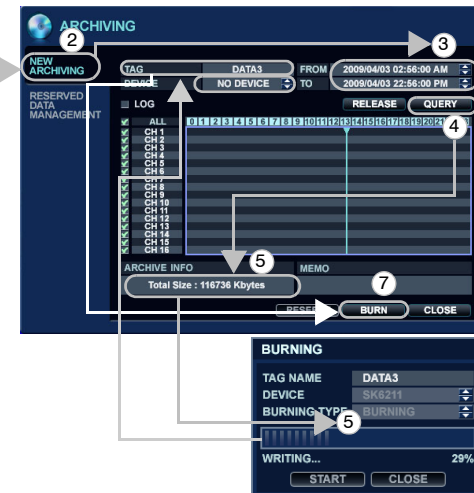
## Archiving Searched Video

1. Click **SEARCH** on the LIVE screen.
2. Search for recorded video by either searching by Date/Time or searching by Event.
3. Select a starting point for playback, click **Play** to find the beginning of the clip you want to archive, then click **Pause** to pause playback.
4. Click **A** to mark the beginning of the video you want to archive.
5. Enter a **TAG** name, select the cameras you want to archive, then click **START**. The display returns to playback.
6. Click **Pause** to pause playback, click **B**, then click **STOP** to mark the end of the clip.
7. Click **RESERVE**, then click **CLOSE**.
8. Click **C** to exit playback mode, then click **CLOSE** to exit the **SEARCH** menu.
9. Click **ARCH** on the main menu.
10. Click **RESERVED DATA MANAGEMENT**, select the clip by name in the AVI ARCHIVE LIST, then click **BURN**.
11. Select a **DEVICE** and a **BURNING TYPE**, then click **START**.



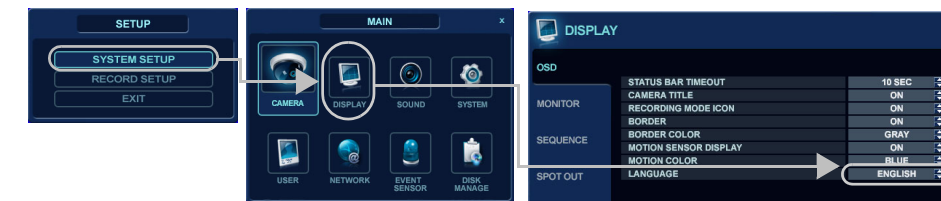
## Archiving Video from the LIVE Screen

1. Click **ARCH** on the LIVE screen.
2. Select **NEW ARCHIVE**.
3. Set the START/END time for archiving.
4. Click **QUERY**.
5. Check the data size and select the device to which the data is saved (CD, DVD, or USB media).
6. Enter a **TAG NAME** to name the folder on the device.
7. Click **BURN** to burn the clip to the chosen media.
8. Select a **DEVICE** and a **BURNING TYPE**, then click **START**.



## System Setup

### Changing the OSD Language



1. Click **MENU**.
2. Select **SYSTEM SETUP**.
3. Select **DISPLAY**.
4. Select **OSD**.
5. Select the desired language.
6. Click **APPLY**.

## RECORD Menu Setup

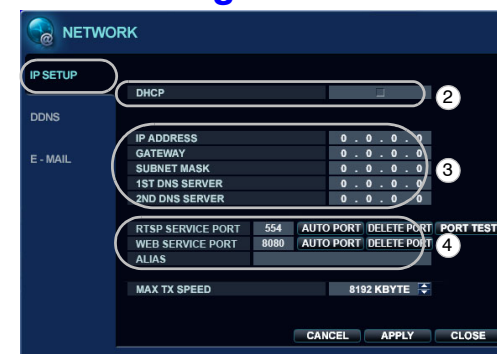
### Configuring Recording Parameters

To change the recording configurations from the default settings, select **RECORD SETUP**, then make the desired changes. Refer to your HREP4, HREP8, HREP16 User Guide.



## Configuring the Network IP Settings

1. Select **NETWORK** on the MAIN menu.
2. Uncheck **DHCP** for static IP setting.
3. Enter the IP information that you get from your network administrator.
4. Check the service ports for WEB and RTSP (2 ports only).
5. Use **AUTO PORT** when your router supports UPNP.
6. Click **AUTO PORT** to see the connection address in the ALIAS field.



**Note** The default IP setting is DHCP, so you do not need to manually set the IP address. Your router will assign the IP address automatically.

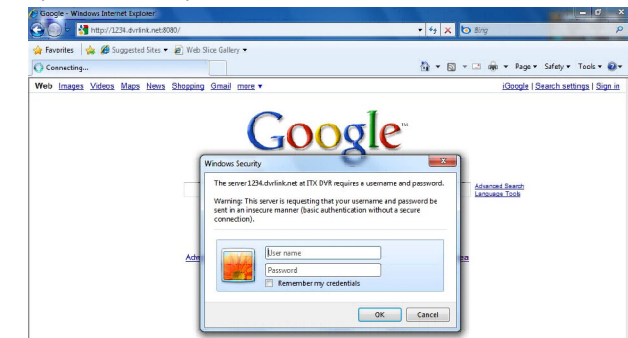
### DDNS Settings

For information about configuring the DDNS settings, please refer to the DDNS Application note (document 800-07045).

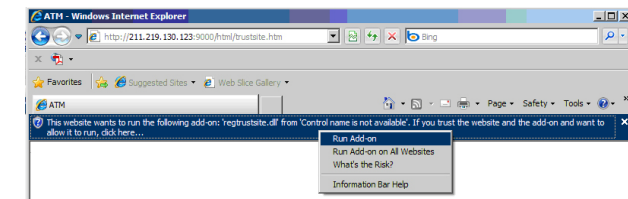
## Connecting through the Internet

For connecting through the internet, the 554 and 8080 ports should be set to Port Forwarding at the router.

1. Open Internet Explorer.

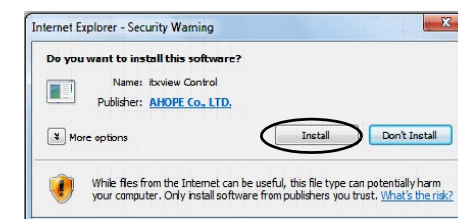


2. Enter the IP Address or the URL of your DVR into the IE Explorer Address bar:
  - http://XXX.XXX.XXX.XXX
  - http://XXX.XXX.XXX.XXX:PPPP (if you are using another Web port) (PPPP = the assigned web port number)
3. Enter the Default ID (**ADMIN**) and password (**1234**), then click **OK**.
4. Allow ActiveX to download.

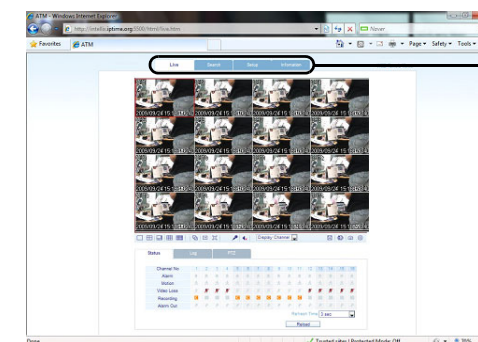


**Note** If you cannot download ActiveX, then go to the Security tab in IE and check all ActiveX options.

5. Install ActiveX.



The LIVE view window opens.



In addition to LIVE view, users can access **SEARCH** and **SETUP**, depending on their User Authority privileges. Refer to your HREP4, HREP8, HREP16 User Guide for more information about User Authority.

# Honeywell

www.honeywellvideo.com  
+1.800.796.CCTV (North America only)  
HVSsupport@honeywell.com

Document 800-07015 - Rev B - 09/10