

# TYPHOON<sup>®</sup> INTAKE SYSTEMS

BY 

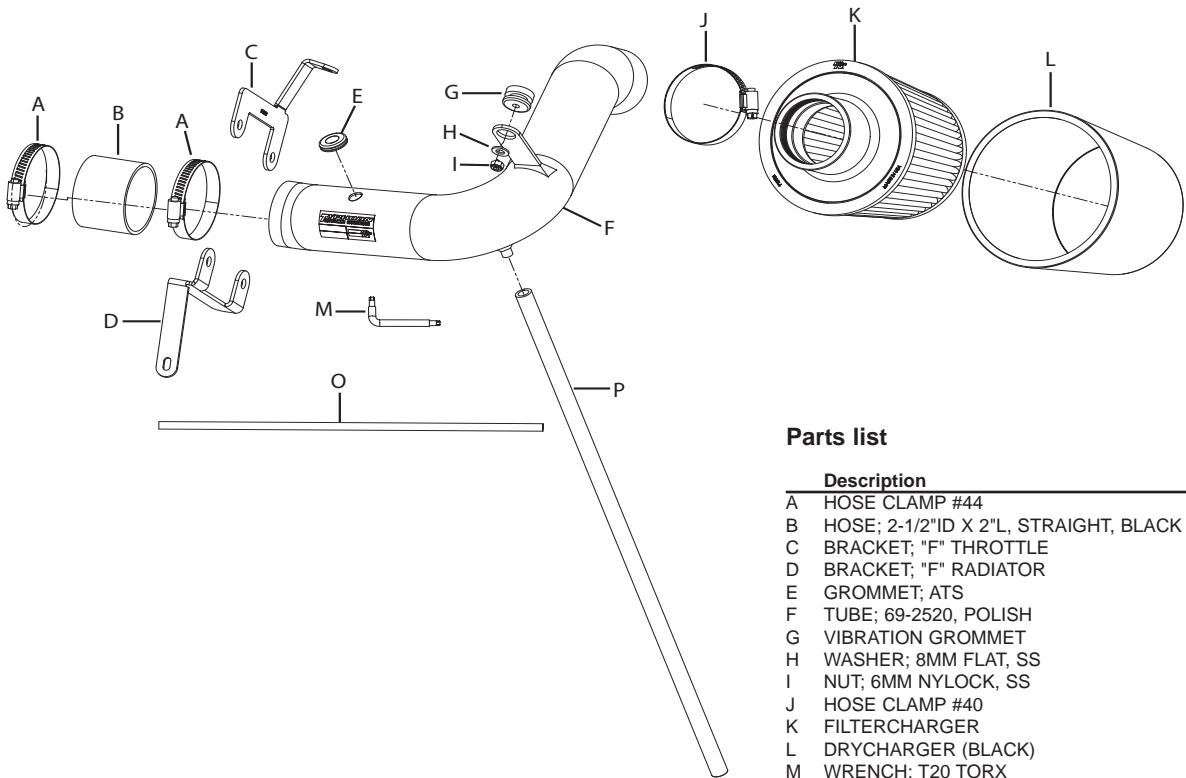
**WARNING:** Please follow directions carefully. The K&N Drycharger, included, must be installed on the K&N air filter in all K&N Typhoon Cold-Air intake kits. The K&N Typhoon Intake System is a performance product that can be used safely during normal, ambient weather conditions. During harsh and inclement weather conditions, you must convert your Complete Cold Air Intake System to a Short-Ram configuration, or return your intake to the stock OEM airbox and intake tract configuration. Failure to follow these instructions can void your warranty.

## INSTALLATION INSTRUCTIONS

69-2520

**Dodge**  
2000-05 Neon  
L4-2.0L  
**Chrysler**  
2000-05 Neon  
L4-2.0L

**Tools**  
Flat Blade Screwdriver  
Phillips Screwdriver  
Ratchet  
10mm Socket  
13mm Socket



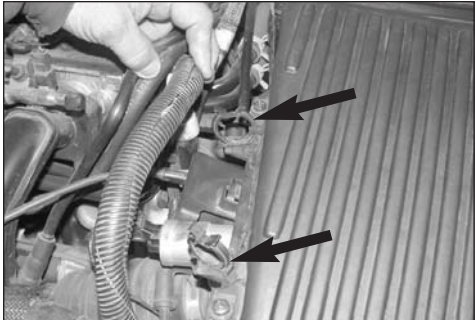
Parts list			
	Description	Qty.	P/N
A	HOSE CLAMP #44	2	08560
B	HOSE; 2-1/2"ID X 2"L, STRAIGHT, BLACK	1	08441
C	BRACKET; "F" THROTTLE	1	070063
D	BRACKET; "F" RADIATOR	1	070062
E	GROMMET; ATS	1	08167
F	TUBE; 69-2520, POLISH	1	27131TP
G	VIBRATION GROMMET	1	082002
H	WASHER; 8MM FLAT, SS	1	08272
I	NUT; 6MM NYLOCK, SS	1	07512
J	HOSE CLAMP #40	1	08554
K	FILTERCHARGER	1	KRU4950E
L	DRYCHARGER (BLACK)	1	971001DK
M	WRENCH; T20 TORX	1	69801
O	EDGE TRIM	1	102455
P	HOSE; 10MM X 22"L, BLACK SILICONE	1	084060

### TO START:

1. Turn the ignition OFF and disconnect the vehicle's negative battery cable.



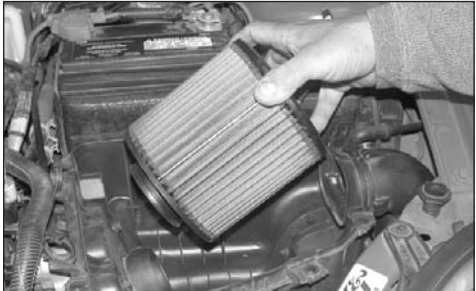
2. Remove the air temperature sensor from the stock intake tube as shown



3. Remove the wire loom from retaining clips as shown.



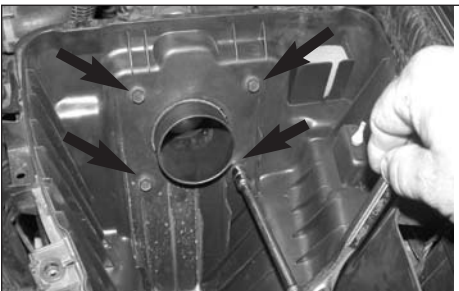
4. Loosen and remove the five airbox retaining bolts then remove airbox lid as shown.



5. Remove the stock air filter.



6. Pull up and remove the fresh air intake from fender well.



7. Remove the four throttle body retaining bolts from airbox. These bolts will be re-used.



8. Remove the crankcase vent hose from airbox as shown.



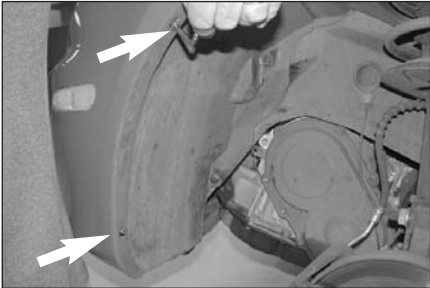
9. Remove the bolt and nut that secure the the airbox to the vehicle. Bolt will be re-used.



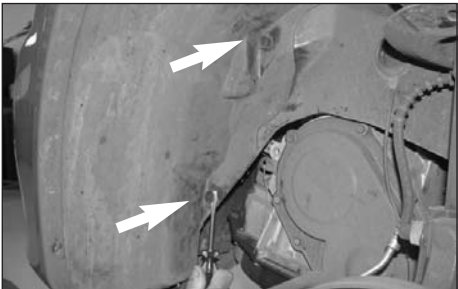
10. Remove the airbox from the vehicle.



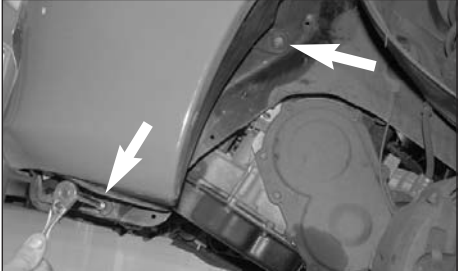
11. Jack the driver's side of the vehicle up and support with jack stands then remove the tire.



12. Using the supplied T-20 wrench, remove the two screws that retain the inner fender valance to the fender.



13. Remove the two push pins that retain the inner fender valance and move out of the way.

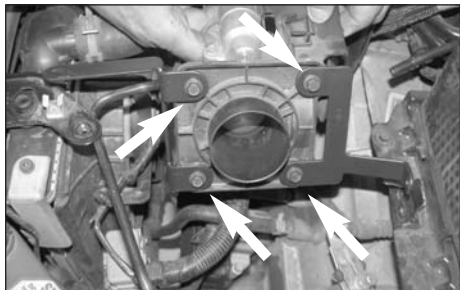


14. Remove the two bolts that retain the resonator to the fender well then remove the resonator.





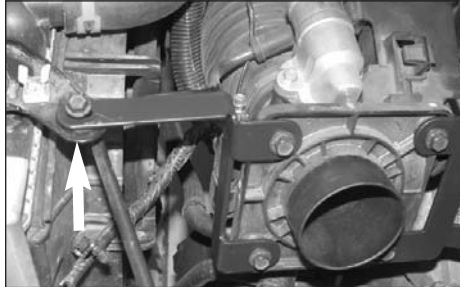
15. Remove the battery tray mounting bolt. This bolt will be re-used.



16. Using the four bolts that were removed in step 7, secure the two provided throttle body brackets to the throttle body as shown.



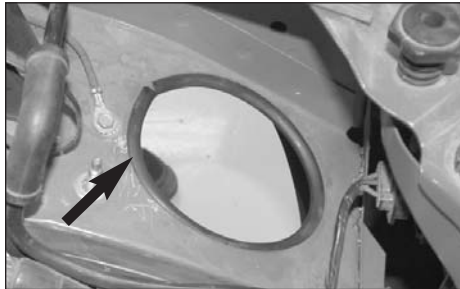
17. Using the battery tray mounting bolt that was removed in step 15, mount the throttle body bracket to the battery tray as shown.



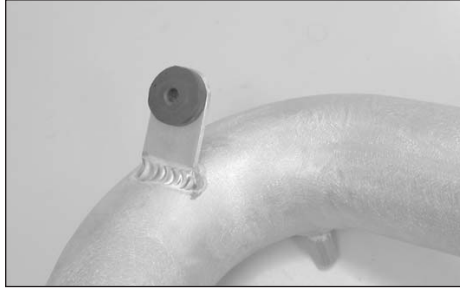
18. Using the stock bolt removed in step 9, secure the throttle body bracket to the stock airbox mount.



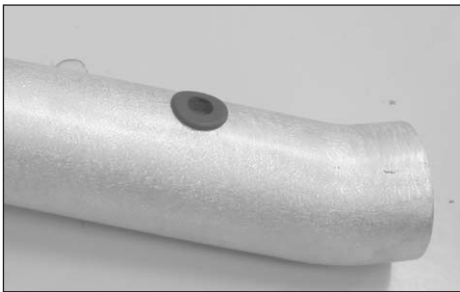
19. Install the supplied silicone hose and hose clamps to the throttle body and tighten throttle body hose clamp.



20. Install the supplied edge trim to the resonator hole as shown.



21. Install the larger grommet into the K&N intake tube bracket.



22. Install the smaller grommet into the K&N intake tube.



23. Slide the K&N intake tube down the resonator hole then insert the other end into the throttle body silicone hose.



24. Align the K&N intake tube bracket to the stock airbox mount.



25. Using the supplied nut, tighten the intake tube bracket to the stock stud.



26. Align the intake tube and tighten throttle body hose clamp.



27. Install the air temp. sensor into the rubber grommet on the K&N intake tube.



28. Using the supplied silicone hose, attach one end to the K&N intake tube and the other end to the crankcase vent tube.



29. Install the K&N Drycharger and hose clamp onto the K&N Filtercharger.



30. From underneath the vehicle, install the K&N Filtercharger onto the K&N intake tube.

31. Align everything for best fit and clearance and tighten all hardware.

32. Reverse the removal process and reinstall the inner fender valance.

33. Remount the tire and torque to factory specs.



34. Re-connect the negative battery cable and double check that everything is tight and properly positioned before starting the vehicle.

35. The C.A.R.B. exemption sticker, (attached), must be visible under the hood, so that an emissions inspector can see it when the vehicle is required to be tested for emissions. California requires testing every two years, other states may vary.

36. It will be necessary for all Typhoons to be checked periodically for realignment, clearance and tightening of all connections. Failure to follow the above instructions or proper maintenance may void warranty.

**ROAD TESTING:**

1. Start the engine with the transmission in neutral or park, and the parking brake engaged. Listen for air leaks or odd noises. For air leaks secure hoses and connections. For odd noises, find cause and repair before proceeding. This kit will function identically to the factory system except for being louder and much more responsive.

2. Test drive the vehicle. Listen for odd noises or rattles and fix as necessary.

3. If road test is fine, you can now enjoy the added power and performance from your kit.

4. K&N suggests checking the Filtercharger element periodically for excessive dirt build-up. When the element becomes covered in dirt (or once a year), service it according to the instructions on the Recharger service kit, part number 99-5000 or 99-5050.

**\*FREE K&N DECAL To register your warranty, please see us online at [knfilters.com/register](http://knfilters.com/register). FREE K&N DECAL\***