

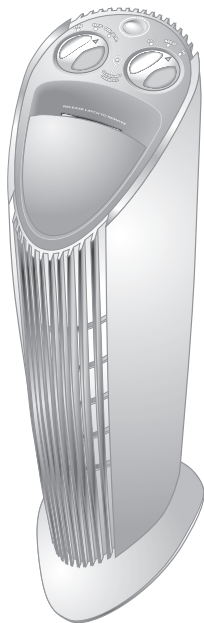
# THE SHARPER IMAGE®

GP™

Silent Air Purifier  
Germicidal Protection

SI871 Instructions

INCLUDES IMPORTANT  
SAFETY INFORMATION.  
READ ALL INSTRUCTIONS  
BEFORE USING THIS APPLIANCE.  
SAVE THESE INSTRUCTIONS.





*Dear Sharper Image Customer,*

*Thank you for your purchase of a Sharper Image product. We appreciate your business very much.*

*Our goal is that you will be completely satisfied with this product's quality and performance. We offer generous return privileges and excellent warranties on all our products.*

*Since 1977, The Sharper Image has shared the fun of discovering innovative products that make life better and more enjoyable. We've been in business a long time because we are an exciting place to shop and — just as importantly — we strive to deliver outstanding customer service that exceeds your expectations.*

*Enjoy your purchase!*

*Call 1-800-344-4444 for ordering and customer service, or visit*  
**www.sharperimage.com**, *our award-winning Website.*



# Table of Contents

|  |    |
|--|----|
| Warnings .....                                     | 6  |
| Caution .....                                      | 8  |
| Frequently Asked Questions .....                   | 9  |
| Frequently Asked Questions About OzoneGuard™ ..... | 10 |
| General Instructions .....                         | 11 |
| Setup and Operation.....                           | 11 |
| Cleaning the Collection Grid .....                 | 13 |
| Thorough Cleaning.....                             | 14 |
| Additional Information .....                       | 15 |
| Germicidal Lamp Replacement .....                  | 16 |
| Statement of FCC Compliance .....                  | 18 |

If candles or oil lamps are burned, the collection grid must be cleaned immediately or the collected soot may be released back into the room. In any area where this product will be subjected to heavy pollution it will be necessary to clean the collection grid more frequently.

# Warnings

**Warning:** To reduce the risk of fire, electric shock or injury when using any electrical appliance, basic precautions should always be observed, including the following:

- This appliance operates at 110V AC and 50Hz or 60Hz only.
- Connect to a polarized outlet only.
- Plug is polarized with one blade wider than the other. The plug is only designed to fit in polarized outlet. Do not attempt to defeat this safety feature.
- Use indoors only.
- Unplug from outlet when not in use and before servicing.
- Do not allow the appliance to be used as a toy. Close attention is necessary when the appliance is operated near children.
- Use only as described in this user manual.
- Do not use if cord or plug appears to be damaged. If the appliance is not working properly, or has been dropped, damaged, left outdoors or dropped into water, return it to a service center or to the original place of purchase.
- Do not pull, lift or carry by the power cord. Do not use the cord as a handle, close a door on the cord, or pull the cord around

# Warnings

or against sharp edges or corners.

- Keep the cord away from heated surfaces.
- A damaged power cord must be replaced by qualified service personnel only. There are no user-serviceable parts inside the unit. Any attempt to open the unit will void the warranty and could lead to serious damage to the unit and/or personal injury to the user.
- Before unplugging the unit from the outlet, turn off all the controls.
- Do not unplug by pulling the cord. Grasp the plug itself, not the cord, when unplugging from an outlet.
- Do not handle the plug or appliance with wet hands.
- Do not put any object into openings. Do not continue to use with any opening blocked. Keep all openings free of dust, lint, hair or anything that may reduce airflow.
- Keep hair, loose clothing, fingers and all parts of the body away from openings.
- Do not operate the unit in areas where flammable or combustible products or vapors may be present.

**READ AND SAVE THESE INSTRUCTIONS**

# Caution

This product generates invisible ultraviolet light. To avoid overexposure when the lamp is on, persons must stay at least one foot away from the unit if the total duration of exposure to the unit will be more than 30 minutes per day. Shorter duration of exposure at close proximity is safe. If the enclosure is damaged, do not use the product.

Never stare at the UV-C lamp or place your face directly against the front or rear grill during operation.

Failure to follow these warnings can result in direct exposure to germicidal light, which can cause temporary or chronic damage to your eyesight, or may even result in blindness.

The collection grid has many edges and areas that can trap water. If running water is used to clean the grid, allow the collection grid to dry completely.



## Frequently Asked Questions

### How often is cleaning required?

At least every two weeks, anytime The Sharper Image® GP™ Silent Air Purifier makes an audible sound or the Cleaning Overdue indicator illuminates.

### How should it be cleaned?

Wipe the removable collection grid with a damp cloth, paper towel or sponge. **It is very important that the collection grid is completely dry before returning it to the main housing.**

### What is the clean fresh scent I smell?

The scent is ozone, (O<sub>3</sub>), a combination of three oxygen atoms. (The U.S. government has set safe standards for ozone and Sharper Image® Silent Air Purifiers comply with those standards.)

### Which power setting should I use?

If the odor of ozone is strong (for instance in a smaller room), you may prefer to have the power setting on medium or low.

**Please read this product instruction manual for important safety information and operating instructions.**

## Frequently Asked Questions About OzoneGuard™

### **What does OzoneGuard™ do?**

With the OzoneGuard in place, a significant portion of ground-level ozone inside the air purifier — including any trace levels of ozone by-product — is converted into oxygen before the cleaned air circulates back into the room.

### **Why is the OzoneGuard™ smaller than the grill itself?**

The majority of the air output is directed toward the center of the grill and therefore a larger OzoneGuard isn't necessary.

**Please read this product instruction manual for important safety information and operating instructions.**

# General Instructions

## Setup and Operation

Place The Sharper Image GP at least twelve inches from the wall and in a location where children cannot stare directly into the unit at a close range.

Plug into a polarized 110V outlet. (Read Warnings for details.)

Switch the **POWER CONTROL** to the desired setting:

**ON:** The unit will clean and circulate the air but the germicidal lamp is not activated.

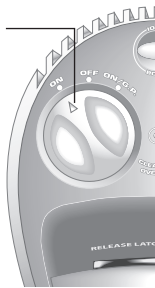
**ON/GP:** Air is also passed through the UV-C light produced by a germicidal lamp.

Blue Glow coming from within the unit indicates that the germicidal lamp is operating.



12" →

Power Control



## Setup and Operation

Switch the **MODE CONTROL** to the desired setting:

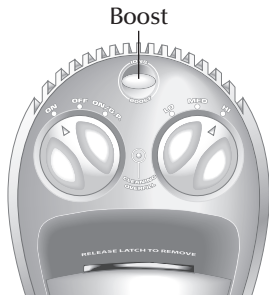
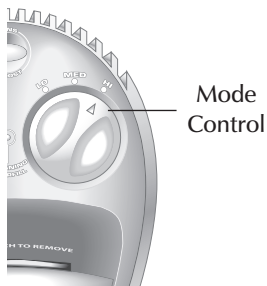
**LOW:** For small rooms or rooms where the door is usually closed.

**MEDIUM:** For average-sized rooms.

**HIGH:** For large rooms and higher traffic areas.

To override the **MODE CONTROL** setting and to run the unit at maximum power for five minutes, press **BOOST**.

Your previously selected power level resumes after the five minutes.



## Cleaning the Collection Grid

This model features 3 highly charged collection blades separated by 2 oppositely charged “driver” blades. This improves the particle capture rate.

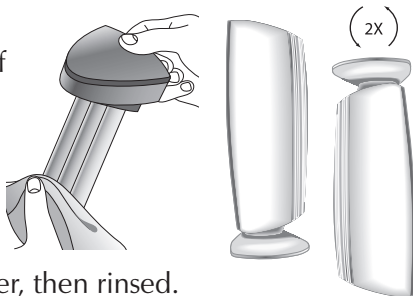
**Clean the grid every one or two weeks.** As a reminder, the Cleaning Overdue indicator turns amber after two weeks. If the Cleaning Overdue indicator turns red, the unit has shut down because of excessive dirt or circuitry problems. In most cases, a thorough cleaning returns the unit to normal operation.

1. Before cleaning, unplug the unit.
2. Remove the collection grid by releasing the latch and pulling the grid from the top of the unit.



## Cleaning the Collection Grid

3. Use a dry or slightly damp towel or sponge to quickly wipe the dust from each of the three collection bars.
4. Before replacing the grid, invert the entire unit two or three times.



**Note:** The grid may also be washed with warm soapy water, then rinsed. If this method is used, allow 24 hours for the grid to completely dry before reinserting it into the main housing.

## Thorough Cleaning

If the unit makes noise during operation, a thorough cleaning of the grid, back grill and OzoneGuard front grill may be required.

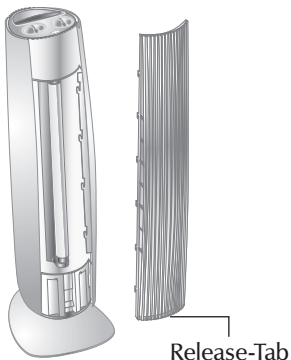
1. Before cleaning, unplug the unit.
2. Release the grills by lifting the blue **RELEASE-TABS** on the bottom of the grills. Slide up to remove.

## Thorough Cleaning

- Use a hair dryer to blow dust from the interior or a vacuum to remove dust.

**Note:** The OzoneGuard cannot be detached from the front grill. The OzoneGuard has sharp edges; use caution when cleaning.

**CAUTION:** Do not use the product if the ionizing wires are broken or either grill appears damaged.



## Additional Information

The exterior of the unit can be cleaned using a cloth or sponge and a solution of one part household bleach to five parts water or any bleach-based spray cleaner.

Before plugging the unit back into an outlet, allow the surface to dry completely.

The unit will not function while the collection grid is removed or either of the grills are removed.

## Additional Information

The majority of collected particles will gather on the removable stainless steel grid. Over time, debris will accumulate inside the unit. To access the inside, remove the front and rear grills. (See section titled “Thorough Cleaning.”)

Sharper Image® Silent Air Purifiers comply with current U.S. safety requirements for low ozone emissions for consumer products. We recommend that individuals with a history of respiratory disease consult with their doctor about possible heightened sensitivity to very low ozone.

## Germicidal Lamp Replacement

**To order replacement lamps directly from The Sharper Image, call 1-800-344-5555 and order item number SI922.**

Lamps are effective for about 12 months of continuous use. To maintain maximum performance, the lamp should be wiped free of particles every three months.



## Germicidal Lamp Replacement

Oil from fingers will reduce the germicidal performance of the UV-C lamp. If possible, use gloves or handle only by the metal area of the lamp. Otherwise, clean the lamp after installing to remove fingerprints and oils.

**To clean:** Wipe the lamp, using a paper towel lightly dampened with rubbing alcohol or an ammonia-based cleaner (such as Windex brand).

1. Remove the cover by lifting up on the **RELEASE-TAB** at the bottom of the cover and sliding the cover up.
2. Turn the lamp  $\frac{1}{4}$  turn (two “clicks”) and slide it from its fixture. Replace with a new one of the same type.
3. Dispose of used fluorescent lamps in accordance with local regulations.



## Statement of FCC Compliance — Model SI871

**WARNING:** Changes or modifications to this unit not expressly approved by the party responsible for compliance could void the user's authority to operate the equipment.

This equipment has been tested and found to comply with the limits for a Class B digital device, pursuant to Part 15 of the FCC Rules. These limits are designed to provide reasonable protection against harmful interference in a residential installation. This equipment generates, uses and can radiate radio frequency energy and, if not installed and used in accordance with the instructions, may cause harmful interference to radio communications. However, there is no guarantee that interference will not occur in a particular installation.

If this equipment does cause harmful interference to radio or television reception, which can be determined by turning the equipment off and on, the user is encouraged to try to correct the interference by one or more of the following measures:

## Statement of FCC Compliance — Model SI871

- Reorient or relocate the receiving antenna.
- Increase the separation between the equipment and receiver.
- Connect the equipment into an outlet on a circuit different from that to which the receiver is connected.
- Consult the dealer or an experienced radio/TV technician for assistance.

# One-Year Warranty

## What Is Covered

This warranty covers any defects in materials or workmanship, with the exceptions stated below.

## How Long Coverage Lasts

This warranty runs for one year from the date of original purchase.

## What Is Not Covered

This warranty does not cover damage caused by misuse or use other than as intended and described in the product instruction manual, or loss or damage to batteries or removable parts.

## What The Sharper Image Will Do

The Sharper Image warrants this product against defects in materials and workmanship. When repair is not practical, The Sharper Image will have the option to replace the defective product with a fully warranted, factory-reconditioned product that is the same or has similar functionality.

## How to Obtain Service

Return the product and receipt, along with a brief explanation of the problem, to:

**T.S.I. - Returns Department**  
**2901-A West 60th Street**  
**Little Rock, AR 72209**

If you have questions please feel free to contact our customer service representatives at 1-800-344-5555 or by email at [care@web.sharperimage.com](mailto:care@web.sharperimage.com).

This warranty gives you specific legal rights, and you may have other legal rights that vary from state to state.

© 2004, 2005, 2006 Sharper Image Corporation

Sharper Image Corporation  
350 The Embarcadero, Sixth Floor  
San Francisco, CA 94105-1218

Shop online: **[www.sharperimage.com](http://www.sharperimage.com)**

Actual product may differ slightly from the product described herein.

V2 11/06