

Quick Start Guide



- Step A *Connect*
- Step B *Setup*
- Step C *Enjoy*

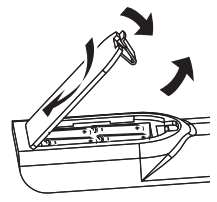
What's in the Box?

You should find these items upon opening the box.

Composite Video Cable

MW antenna
FM antenna

Remote control with two
AAA batteries



DIN OUT cable

Quick start guide

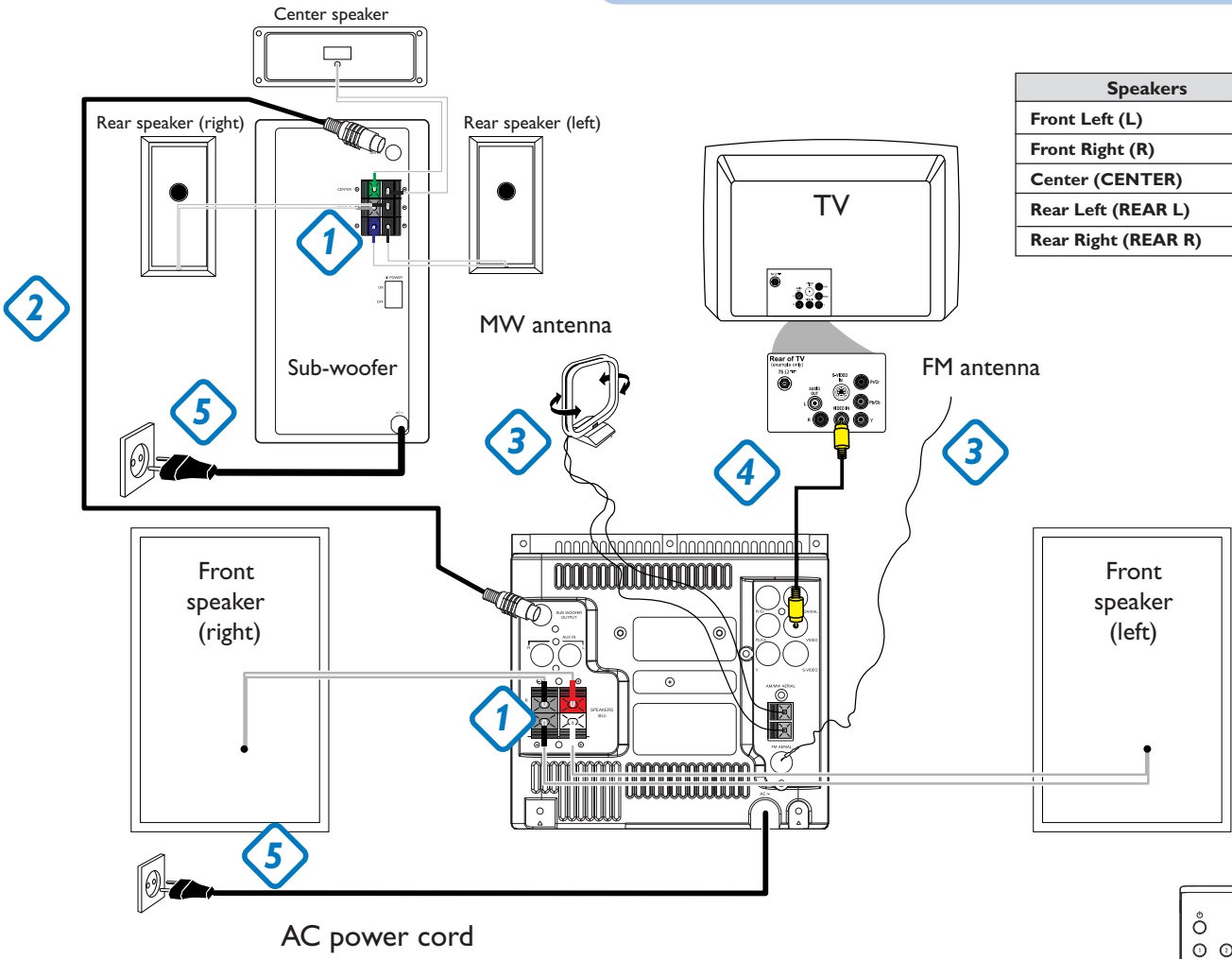
User manual

Step A Connect

Tips

- A sticker indicating speaker type can be found at the back of each speaker box (FRONT L, FRONT R, CENTER, REAR L and REAR R). Insert the speaker wires by matching the colors of the jacks and the labels on the speaker wires.
- See the User Manual for other TV connection options.
- For connecting to a Progressive Scan TV, refer to the user manual for proper connections and detailed setup.

- 1 Connect the speaker wires.
- 2 Connect the subwoofer and the DVD system by using the supplied DIN OUT cable.
- 3 Connect the MW and FM antennas
- 4 Connect the supplied composite video cable to your TV.
- 5 Connect the power cords of the DVD system and subwoofer.

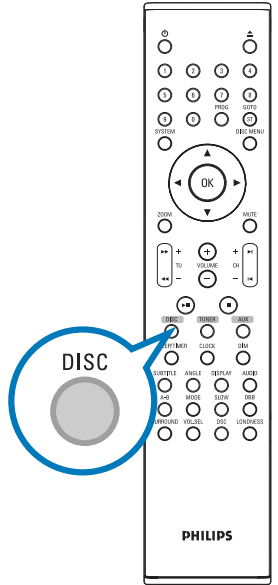


Speakers	⊖	⊕
Front Left (L)	Black	White
Front Right (R)	Black	Red
Center (CENTER)	Black	Green
Rear Left (REAR L)	Black	Blue
Rear Right (REAR R)	Black	Grey

Step B Setup

Setting up the TV

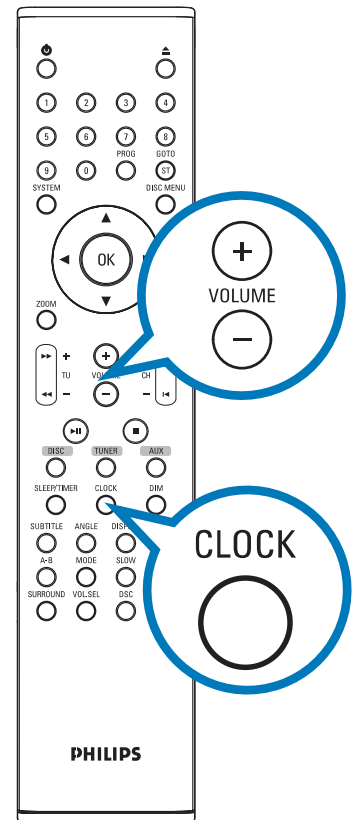
- 1 Press **SOURCE** (**DISC** on the remote) to select disc source.
- 2 Turn on the TV and set it to the correct Video In channel.



Step B Setup

Setting the clock

- 1 In standby mode, press and hold **CLOCK** on the remote.
- 2 When the hour digits flash, turn **VOLUME-/+** on the system or press **VOLUME+/-** on the remote to set the hours.
- 3 Press **CLOCK** again and the minute digits flash. Then turn **VOLUME-/+** on the system or press **VOLUME+/-** on the remote to set the minutes.
- 4 Press **CLOCK** again to confirm the time setting.



Setting DVD menu options

IMPORTANT!

If the progressive scan feature is activated but the connected TV does not support progressive signals or the cables are not connected accordingly, see the user manual for proper progressive scan setup or deactivate the progressive scan feature as below:

- 1) Turn off your TV progressive scan mode or turn on to interlaced mode.
- 2) Press **SYSTEM** on the remote to exit the system menu and then **DISC** to exit progressive scan.

The image shows five screenshots of TV setup menus arranged in a grid. The top row contains: 'General Setup Page' (TV Display: PS, OSD Lang: ENG, Screen Saver: Off), 'Audio Setup Page' (Speaker Setup, SPDIF Setup, Dolby Digital Setup, Channel Delay, 3D Processing, HDCD, Night Mode: On), and 'Video Setup Page' (Component, TV Mode, Quality). The bottom row contains: 'Preference Setup Page' (TV Type: PAL, Audio: CHI, Subtitle: CHI, Disc Menu: CHI, Parental: Default) and 'Password Setup Page' (Password Mode: On, Password:). To the right of these screenshots is a Philips remote control. Two callout boxes with blue borders point to the 'SYSTEM' button (top) and the 'DISC' button (middle). Another callout box with a blue border points to the 'OK' button (center). The remote has various other buttons like ZOOM, TU, VOLUME, CH, and many function buttons at the bottom.

Tip
See chapters "Getting Started" and "System Menu Options" in the User Manual for detailed descriptions.

Playing a disc

1

Press **OPEN /CLOSE** (▲) (▲ on the remote) to open the disc tray.

2

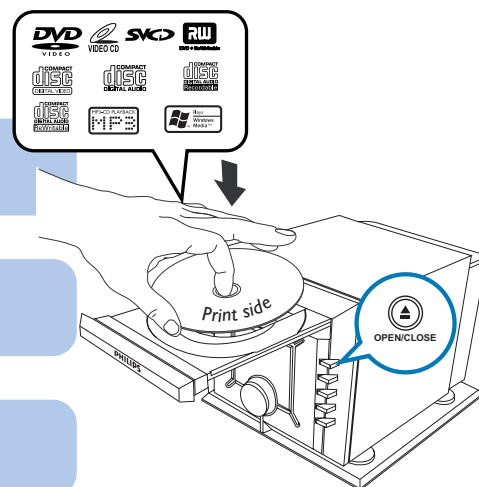
Load in a disc with the label side facing up, then close the disc door.

3

Playback will start automatically. If not, press ►||.

4

To stop playback, press ■.



Programming and tuning to radio stations

1

Press **SOURCE** (**TUNER** on the remote) to select tuner source (FM or MW).

2

Press **PROG** on the remote for more than two seconds to program all available stations in order of waveband.

3

Press **PRESET**▲/▼ (**CH +/-** (◀ / ▶) on the remote) until the desired preset station is displayed.

Tip

Detailed playback features and additional functions are described in the accompanied owner's manual.

Notes for remote control:

- First, select the source you wish to control by pressing one of the source select keys on the remote control (DISC or TUNER, for example).
- Then select the desired function (►||, ◀, ▶ for example).

