

# Quick Start Guide



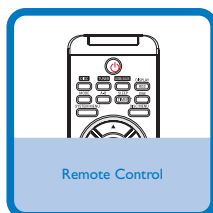
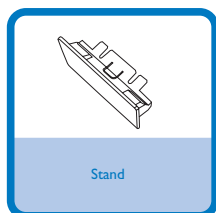
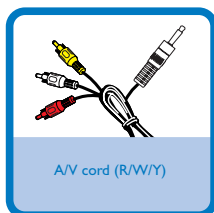
Step A *Connect*

Step B *Setup*

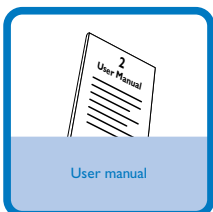
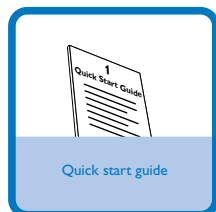
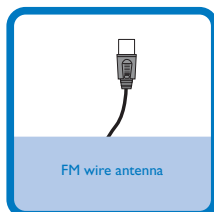
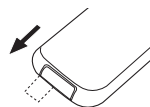
Step C *Enjoy*

## What's in the Box?

You should find these items upon opening the box.



Pull out the plastic protective sheet before use.



# PHILIPS

## Step A Connect

### Tips

- See the User Manual for other TV connection options.
- For connecting to a Progressive Scan TV, refer to the user manual for proper connections and detailed setup.
- Never connect the AC power cord before connection of the DIN cable to avoid causing any damage to the set.

1

Connect the speaker (subwoofer) cables.

2

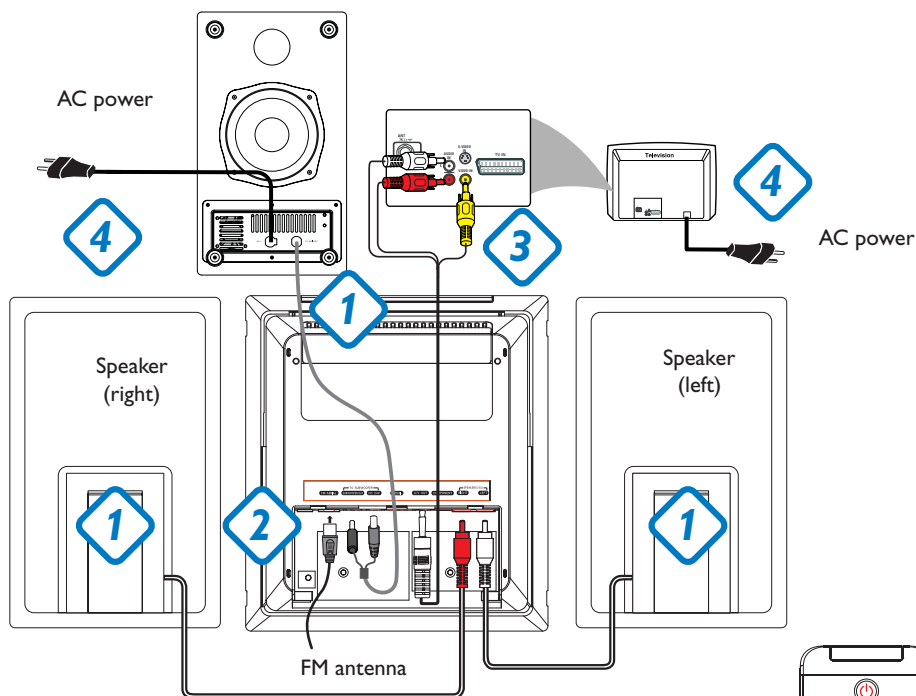
Connect the FM antenna.

3

Connect the A/V cord to a TV.

4

Connect the power cords of the system and TV.



## Step B Setup

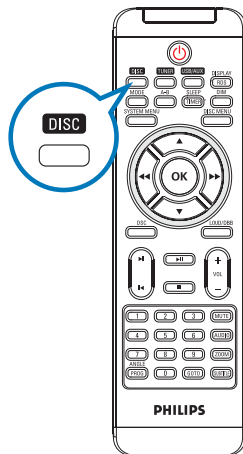
### Setting up the TV

1

Press **SOURCE** (**DISC** on the remote control) to select disc source.

2

Turn on the TV and set it to the correct Video In channel.



## Step B Setup

### Setting the clock

1

In standby mode, press and hold **CLOCK** on the system.

2

When the hour digits flash, press **VOLUME-/+** (**VOL+/-** on the remote control) to set the hours.

3

Press **CLOCK** again and the minute digits flash. Then press **VOLUME-/+** (**VOL+/-** on the remote) to set the minutes.

4

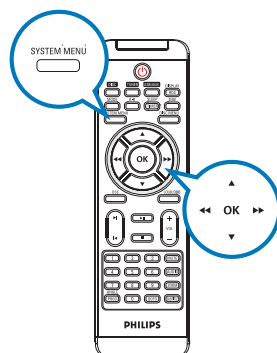
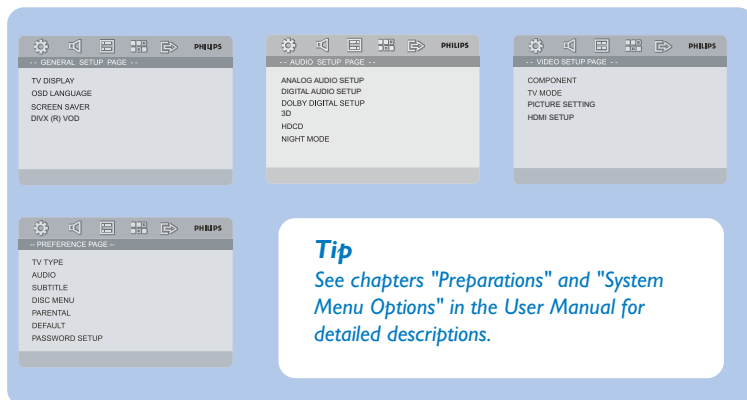
Press **CLOCK** again to confirm the time setting.

### Setting DVD menu options

#### IMPORTANT!

*If the progressive scan feature is activated but the connected TV does not support progressive signals or the cables are not connected accordingly, see the user manual for proper progressive scan setup or deactivate the progressive scan feature as below:*

- 1) Turn off your TV progressive scan mode or turn on to interlaced mode.
- 2) Press **SYSTEM MENU** on the remote to exit the system menu and then **DISC** and "1" to exit progressive scan.



## Step C *Enjoy*

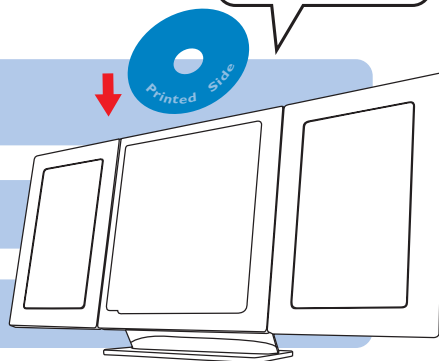


### Playing a disc

- 1 Insert a disc into the slot loader.  
→ Make sure the label side is facing you.  
→ Make sure you have removed any other disc from the slot loader.

- 2 Playback will start automatically. If not press ►||.

- 3 To stop playback, press ■.

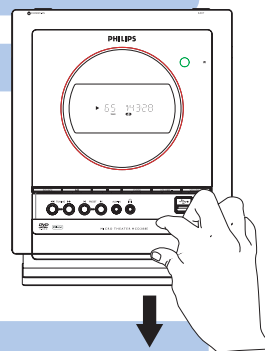


### Programming and tuning to radio stations

- 1 Press **SOURCE** (**TUNER** on the remote control) to select tuner source.


- 2 Press **PROGRAM** on the remote control for more than two seconds to program all available stations in order of waveband.

- 3 Press **PRESET** ◀ / ▶ until the desired preset station is displayed.



### Playing a USB mass storage device

With the Hi-Fi system, you can use USB flash memory (USB 2.0 or USB1.1), USB flash players (USB 2.0 or USB1.1), memory cards (requires an additional card reader to work with this Hi-Fi system).

- 1 Insert the USB device's USB plug into the socket  on the set.

- 2 Press **SOURCE** once or more to select **USB** (or **USB/AUX** on the remote control).

- 3 Play the USB's audio files as you do with the albums/tracks on a CD.

**IMPORTANT!**  
Slide down to expose some buttons and jacks on the front panel!



#### Tip

Detailed playback features and additional functions are described in the accompany owner's manual.