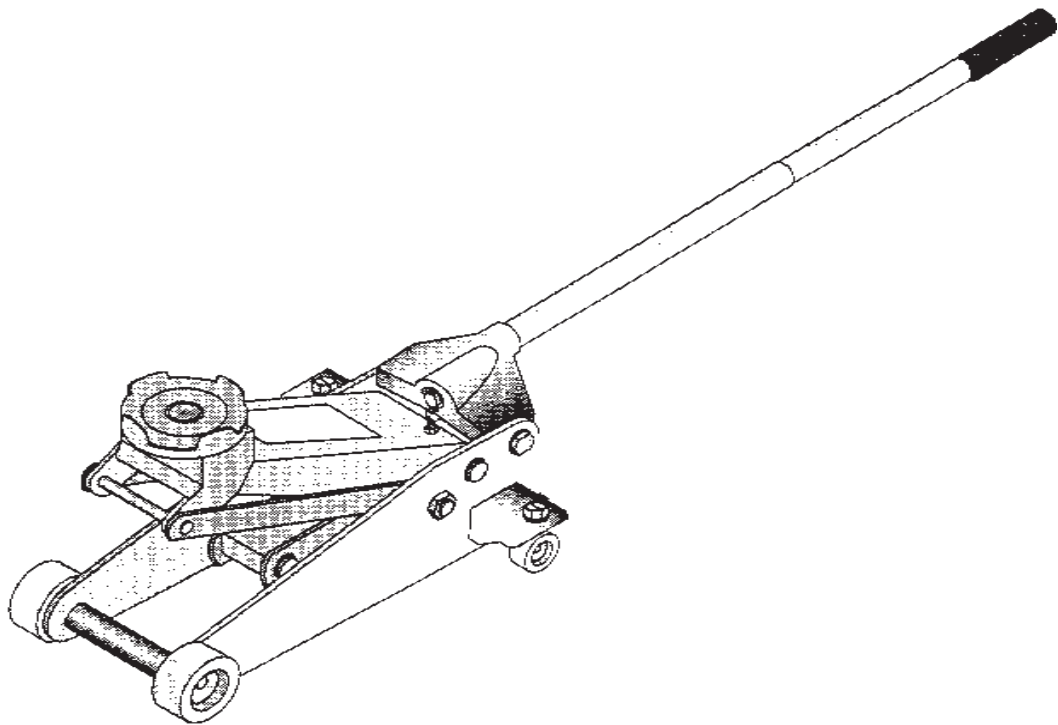




3 TON FLOOR JACK

Model 34271

ASSEMBLY and OPERATING INSTRUCTIONS



Diagrams within this manual may not be drawn proportionally.
Due to continuing improvements, actual product may differ slightly from the product described herein.

Distributed exclusively by Harbor Freight Tools®.

3491 Mission Oaks Blvd., Camarillo, CA 93011

Visit our website at: <http://www.harborfreight.com>



**Read this material before using this product.
Failure to do so can result in serious injury.
SAVE THIS MANUAL.**

Copyright© 1997 by Harbor Freight Tools®. All rights reserved. No portion of this manual or any artwork contained herein may be reproduced in any shape or form without the express written consent of Harbor Freight Tools.

For technical questions or replacement parts, please call 1-800-444-3353.

REVISED 08/05

SPECIFICATIONS

Capacity	6000 lbs
Saddle Lifts	5-3/4" to 20-1/2"
Saddle Diameter	5-3/4"
Saddle Swivel	360 degrees
Overall Dimensions	26"L x 13-1/2"W x 5-3/4"H
Front Wheel Diameter	3.695" x 2" Wide
Rear Wheel Diameter	2.335" X 1.20" Wide
Weight	93 lbs.

SAVE THIS MANUAL

You will need the manual for the safety warnings and cautions, assembly instructions, operating procedures, maintenance procedures, trouble shooting, parts list, and diagram. **Keep your invoice with this manual. Write the invoice number on the inside of the front cover.** Keep both this manual and your invoice in a safe, dry place for future reference.

SAFETY WARNING & CAUTIONS

WARNING: When using the tool, basic safety precautions should always be followed to reduce the risk of personal injury and damage to equipment.

READ ALL INSTRUCTIONS BEFORE USING THIS TOOL!

1. **KEEP WORK AREA CLEAN.** Cluttered areas invite injuries.
2. **OBSERVE WORK AREA CONDITIONS.** Do not use tools in damp, wet, or poorly lit locations. Don't expose to rain. Keep work area well lit.
3. **KEEP CHILDREN AWAY.** Children must never be allowed in the work area. Do not let them handle machines, tools, or equipment.
4. **STORE IDLE EQUIPMENT PROPERLY.** When not in use, tools must be locked up in a dry location to inhibit rust. Always lock up tools and keep out of reach of children.
5. **DO NOT FORCE THE TOOL.** It will do the job better and more safely at the rate for which it was intended. Do not use inappropriate attachments in an attempt to exceed the tool's capacities.
6. **USE THE RIGHT TOOL FOR THE JOB.** Do not attempt to force a small tool or attachment to do the work of a larger industrial tool. Do not use a tool for a purpose for which it was not intended.
7. **DRESS PROPERLY.** Do not wear loose clothing or jewelry as they can be caught in moving parts. Non-skid footwear is recommended. Wear restrictive hair covering to contain long hair.
8. **USE EYE PROTECTION.** Always wear ANSI approved impact safety goggles when working with tools and equipment.
9. **NOT TO BE USED FOR AIRCRAFT PURPOSES.**
10. **DO NOT OVERREACH.** Keep proper footing and balance at all times. Do not reach over or across the product.

11. **MAINTAIN TOOLS WITH CARE.** Keep tools clean for better and safer performance. Follow instructions for lubricating the Jack. The handles must be kept clean, dry and free from oil and grease at all times.
12. **STAY ALERT.** Watch what you are doing, use common sense. Do not operate any tool when you are tired.
13. **CHECK DAMAGED PARTS.** Before using any tool, any part that appears damaged should be carefully checked to determine that it will operate properly and perform its intended function. Check for alignment and binding of moving parts, any broken parts or mounting fixtures; and any other condition that may affect proper operation. Any part that is damaged should be properly repaired or replaced by a qualified technician.
14. **REPLACEMENT PARTS AND ACCESSORIES.** When servicing, use only identical replacement parts. Use of any other parts will void the warranty. Only use accessories intended for use with this tool. Approved accessories are available from Harbor Freight Tools.
15. **DO NOT OPERATE TOOL IF UNDER THE INFLUENCE OF ALCOHOL OR DRUGS.** Read warning labels on prescriptions to determine if your judgment or reflexes are impaired while taking drugs. If there is any doubt, do not operate the tool.
16. **MAKE SURE ALL EQUIPMENT IS RATED TO THE APPROPRIATE CAPACITY.** Never exceed the 6000 lbs. maximum lift capacity.

UNPACKING

Remove your 3 TON FLOOR JACK from the packaging materials.

When unpacking, check to make sure the following parts are included. All sizes listed below are approximate. If any parts are missing or broken, please call Harbor Freight Tools at the number on the cover of this manual.

CAUTION
The Floor Jack is HEAVY.
Use caution when lifting
out of box.

Item #	Description
N/A	Jack
36	Lower Handle
37	Upper Handle

GENERAL

Always use good quality hydraulic jack oil when adding or replacing the oil in your Floor Jack. Do not mix different types of oils together. When filling the Floor Jack with oil, do not permit dirt or any other substance to enter the hydraulic system.

ASSEMBLY

You will need a 3/8" and an 11/16" wrench to complete assembly.

Step 1. Take LOWER HANDLE (#36) and remove the HEX HEAD SCREW (#38).

Step 2: Insert the fitted end of the UPPER HANDLE (#37) into LOWER HANDLE. Rotate HANDLES until the bolt holes line up in the center of the Handle Assembly.

Step 3: Insert HEX HEAD SCREW and tighten with a 10mm wrench as shown in Figure 1.

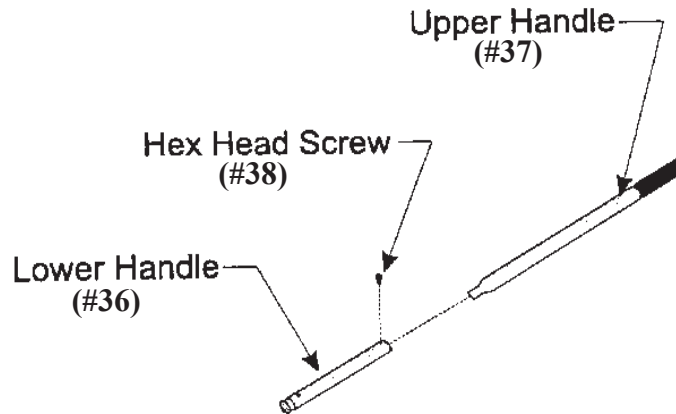


Figure 1 -- Handle Assembly

Step 4: Remove HANDLE BOLT (#34) from the HANDLE SOCKET (#39).

Step 5: Insert Handle Assembly into HANDLE SOCKET and turn Handle Assembly clockwise until it engages the pressure release gear located underneath the HANDLE SOCKET.

Step 6: Thread HANDLE BOLT into HANDLE SOCKET and securely hand tighten the bolt as shown in Figure 2.

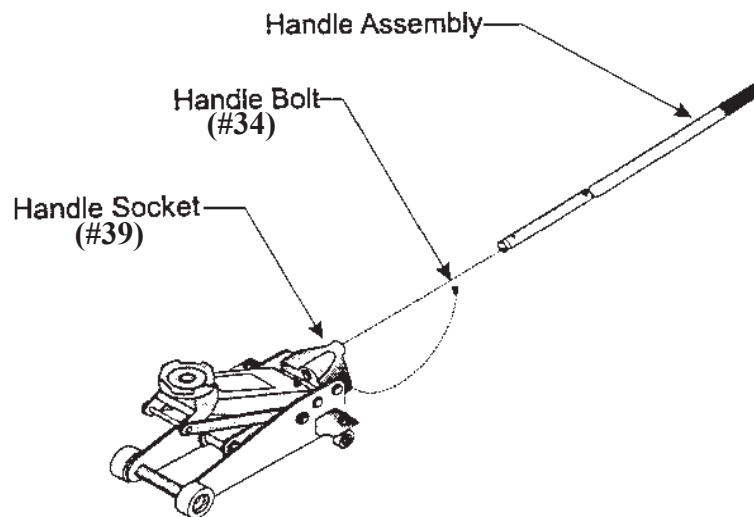


Figure 2 -- Jack Assembly

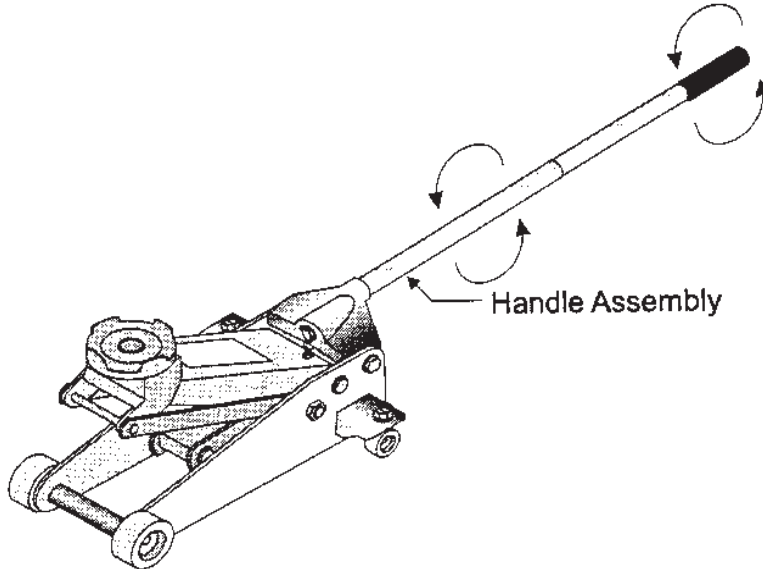
Your Floor Jack is ready for use.

REV 08a

OPERATION

Step 1: Twist the Handle Assembly clockwise to close the pressure release valve as shown in Figure 3.

WARNING
Make sure you do not overload your Floor Jack. Rated capacity is 6000 pounds.



WARNING
Chalk vehicle's wheels to prevent rolling while lifting.

Figure 3 -- Closing Pressure Release Valve

Step 2: Maneuver the Floor Jack underneath the vehicle. Check the vehicle's Owners Manual for proper jacking points. Do not lift vehicle by the body.

Step 3: Begin jacking by lowering the Handle Assembly as shown in Figure 4.

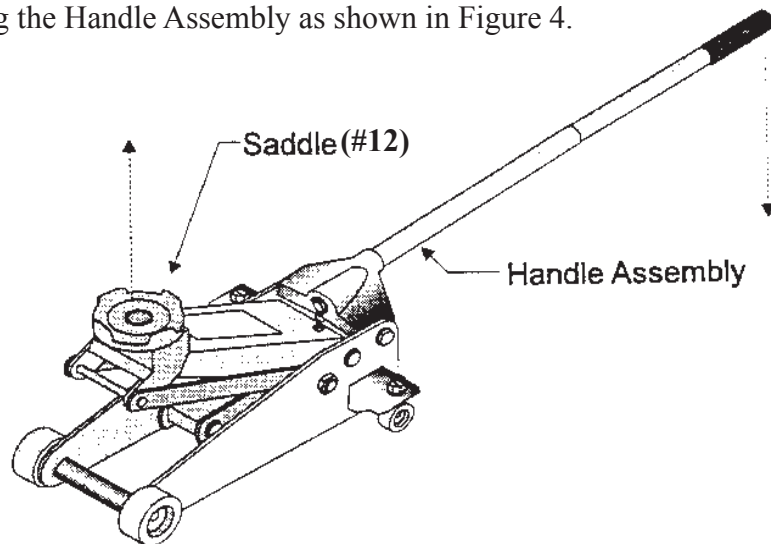


Figure 4 -- Lifting the Vehicle

Step 4: Lift Handle Assembly as high as clearance allows.

Step 5: Repeat Steps 3-4 until vehicle is at desired height. Do not over-extend the jack.

CAUTION

Use jack stands to support vehicle.
Never work around or under a vehicle supported *only* by the Floor Jack.

Step 6: Place jack stands underneath vehicle at specified points. Refer to the vehicle's Owners Manual for proper jack stand placement locations.

Step 7: Slowly twist Handle Assembly counterclockwise. This will lower the vehicle onto the jack stands.

WARNING:

Watch for movement of vehicle or jack stands as vehicle is lowered.
If any movement occurs, jack vehicle up and adjust jack stands properly.

Step 8: Completely lower the Floor Jack and remove from underneath the vehicle.

CAUTION:

When not in use, make sure pressure is released by turning Handle Assembly fully counterclockwise. This will prolong the life of the jack.

Step 9: To make sure vehicle is stable, stand away and attempt to rock the vehicle. If movement is detected, jack up the vehicle and adjust jack stands properly. Test again.

MAINTENANCE

Bleeding the Floor Jack

Step 1. Place Floor Jack on a clear section of floor.

Step 2: Open the pressure release valve by turning the Handle Assembly fully counterclockwise.

Step 3: Open the Air Vent Plug located on top of the LIFT ARM ASSEMBLY (#10) at the rear of the Arm Assembly.

Step 4: Hold the SADDLE down and pump the Handle Assembly rapidly several times as shown in Figure 5.

WARNING

**Make sure you release
jack pressure (Step 2)
before proceeding.**

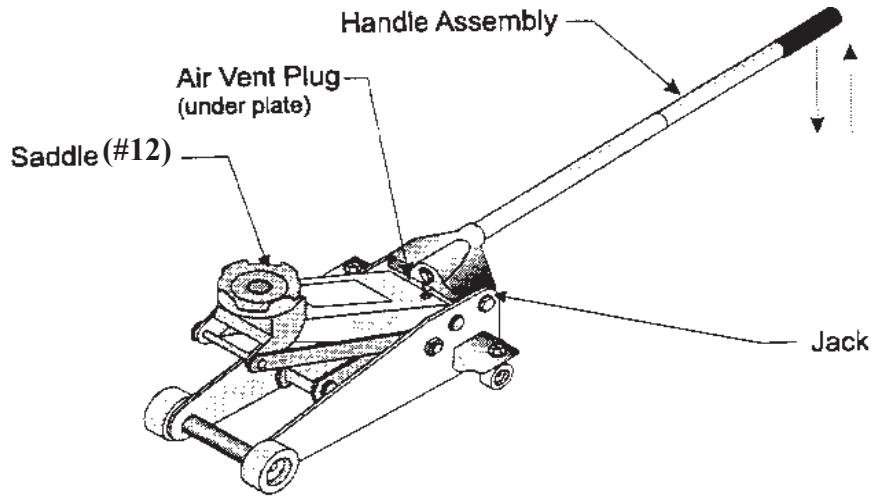


Figure 5 -- Bleeding the Jack

Step 5: Close the pressure release valve by turning the Handle Assembly fully clockwise.

Step 6: If you need to have your jack serviced, take it to a qualified mechanic. The Floor Jack cannot be user serviced. Lubricate the Handle Assembly, Handle Socket, Lift Arm, Wheels, and Lift Arm Linkage before first use and at least twice per month (more often during heavy use) as shown in Figure 6.

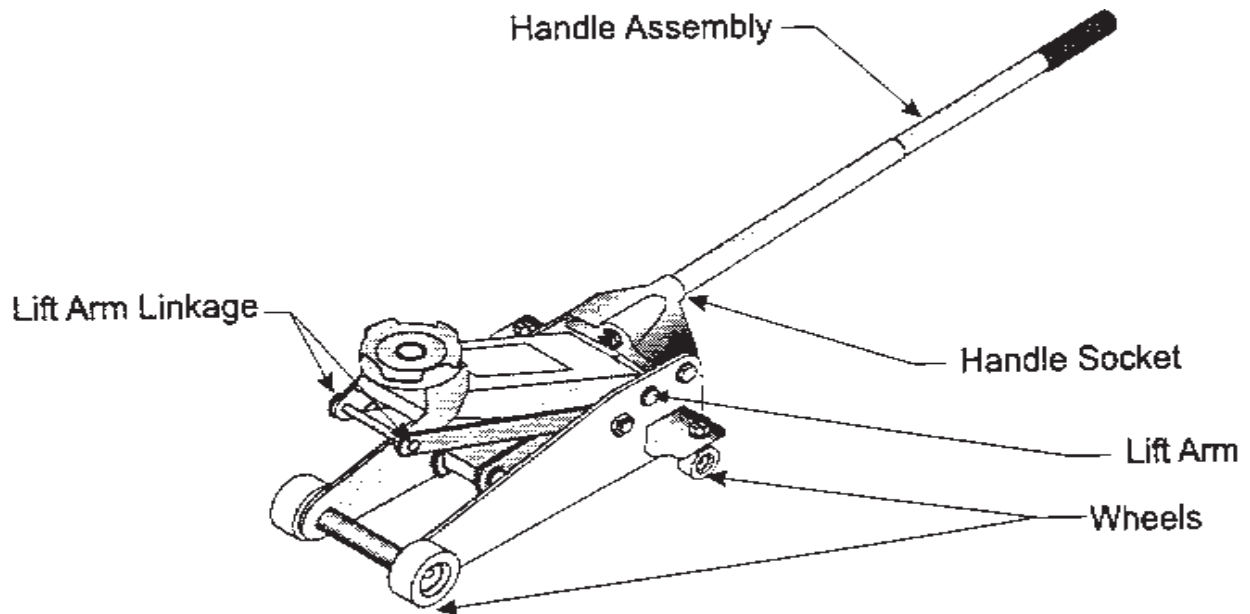
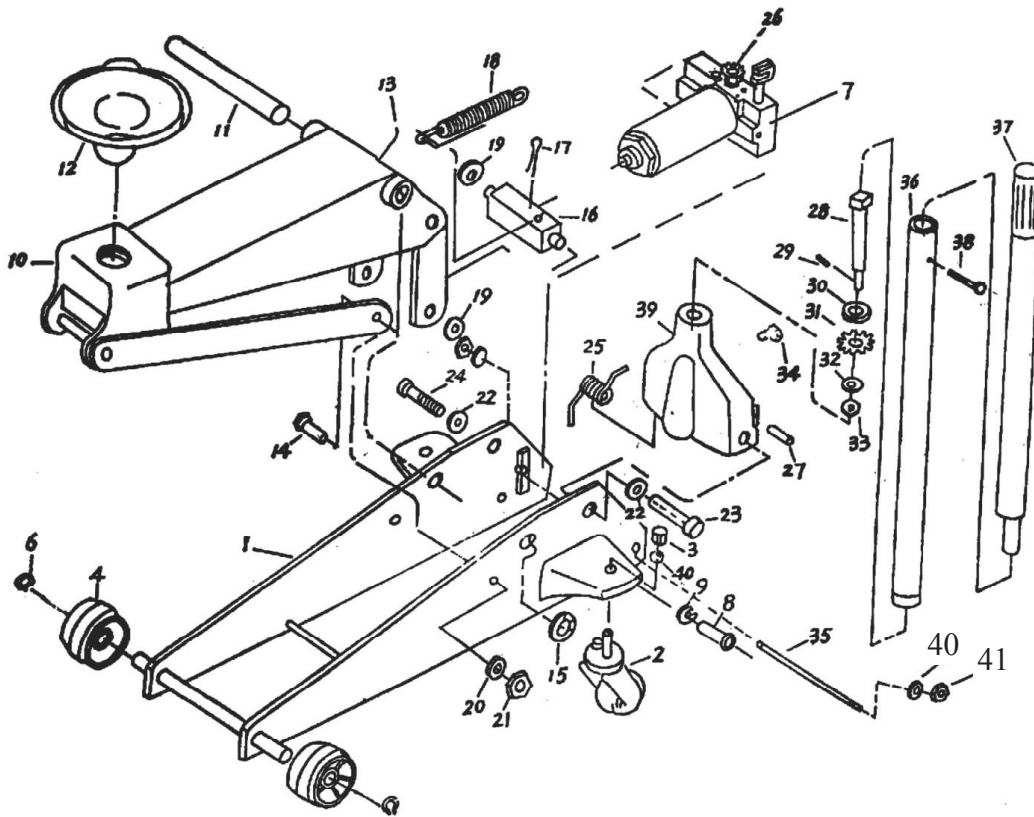


Figure 6 -- Lubrication Points

Parts Diagram



PARTS LIST

Item#	Description	Qty
1	Side Plates	1
2	Caster Assembly	2
3	Locknut	2
4	Wheel	2
6	Retaining Ring	2
7	Power Unit Assembly	1
8	Socket Head Cap Screw	2
9	Split Lockwasher	2
10	Lift Arm Assembly	1
11	Arm Shaft	1
12	Saddle	1
13	Grease Fitting	1
14	Link Bolt	1
15	Retaining Ring	1
16	Link Block (Ram)	1
17	Cotter Pin	1
18	Return Spring	2
19	Retaining Ring	2
20	Lockwasher	2
21	Hex Nut	2

Item#	Description	Qty
22	Lockwasher	2
23	Bolt	1
24	Bolt	1
25	Torsion Spring	1
26	Valve Gear	1
27	Plunger Pin	1
28	Gear Shaft	1
29	Cotter Pin	1
30	Washer	1
31	Handle Socket Gear	1
32	Lockwasher	1
33	Hex Nut	1
34	Handle Bolt	1
35	Stud	1
36	Lower Handle	1
37	Upper Handle	1
38	Hex Head Screw	1
39	Handle Socket	1
40	Lockwasher	1
41	Lockwasher	1