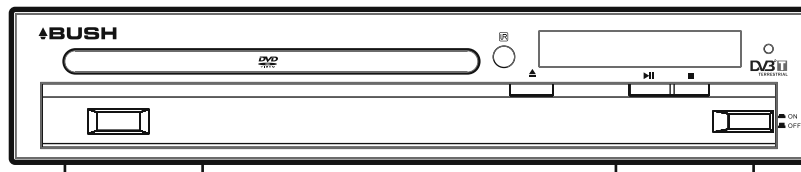


DVD PLAYER WITH INTEGRATED STANDARD DEFINITION DIGITAL TUNER



DFTA9DVD

The Gold Technical Support Line: 1902 215 259

(Charges will apply at \$2.95 per minute)

Introduction

Thank you for buying this Bush product, which is designed to give you many years of trouble-free service.

The DFTA9DVD is suitable for playing: DVDs, DVD+RWs, DVD-RWs, DVD+Rs, DVD-Rs, Audio CDs, MP3 Data and Picture Data. It also allows you to access DVB-T reception which covers VHF & UHF band reception.

You may already be familiar with using a similar unit, but please take time to read these instructions. They are designed to familiarise you with the unit's many features and to ensure you get the very best from your purchase.

Safety is important

Your safety and the safety of others is important. Please therefore, ensure you read the "Safety Instructions" before you operate this unit.

Warranty

In the unlikely event that your product fails to work normally, please call the below Bush warranty number for support.

Australia

Bush Warranty: 1800 509 394

New Zealand

Bush Warranty: 0800 450 259

Table of Contents

Front panel and Rear panel	1
Remote Control	1
Connecting to a TV Set	2
Connecting to an AV Amplifier	2
The Setup Menu System DVD	3
MP3 Playback	5
Kodak Picture CD Playback	5
The Setup Menu System DVB-T	6
Troubleshooting	9
Specifications	10
Warranty	10

Important Safety Instructions

- 1) Read and follow all instructions and warnings carefully.
- 2) Do not use this device near water.
- 3) Clean only with dry cloth.
- 4) Do not install near any heat sources such as radiators, heat registers, stoves, or other devices (including amplifiers) that produce heat.
- 5) If the provided plug does not fit into your outlet consult an electrician for replacement of the obsolete outlet.
- 6) Protect the power cord from being walked on or pinched particularly at plugs, convenience receptacles and the point where they exit from the apparatus.
- 7) Only use attachments/accessories specified by the manufacturer.
- 8) Unplug this apparatus during lightning storms or when unused for long periods of time.
- 9) Refer all servicing to qualified service technician. Servicing is required when the apparatus has been damaged in any way. If liquid has been spilled or objects have fallen into the apparatus, the apparatus has been exposed to rain or moisture, does not operate normally or has been dropped.

- 10) The ventilation should not be covered. This may cause the unit to over heat.
- 11) No naked flame sources, such as candles, should be placed on or near the apparatus.

WARNING: To reduce the risk of fire or electric shock, do not expose this apparatus to rain or moisture.



The symbol indicates that dangerous voltages constituting a risk of electric shock are present within this unit.



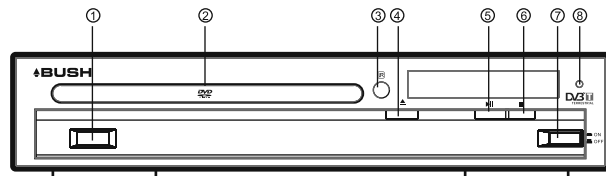
The symbol indicates that there are important operating and maintenance instructions in the literature accompanying this unit.



The symbol indicates that this product incorporates double insulation between hazardous mains voltage and user accessible parts. When servicing use only identical replacement parts.

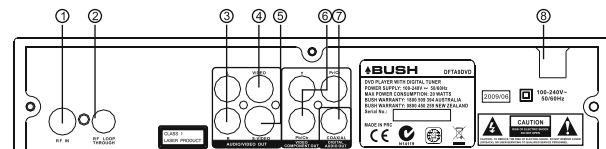
Front and Rear Panel

1. Front panel



- | | |
|---------------------|---------------------|
| ① USB PORT | ⑤ PLAY/PAUSE BUTTON |
| ② CABIN DOOR | ⑥ STOP BUTTON |
| ③ SENSOR | ⑦ POWER |
| ④ OPEN/CLOSE BUTTON | ⑧ INDICATOR LIGHT |

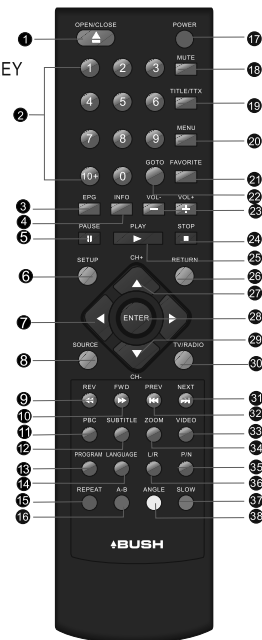
Rear panel



- | | |
|----------------------|--|
| ① RF IN | ⑤ S-VIDEO OUTPUT JACK |
| ② RF LOOP THROUGH | ⑥ COMPONENT VIDEO OUTPUT (Y, PB/CB, PR/CR) |
| ③ AUDIO OUTPUT (L/R) | ⑦ DIGITAL AUDIO COAXIAL OUTPUT JACK |
| ④ VIDEO OUTPUT JACK | ⑧ MAINS CABLE |

Remote Control

- ① OPEN/CLOSE
- ② 0-10+ NUMBER KEY
- ③ EPG
- ④ INFO
- ⑤ PAUSE
- ⑥ SETUP
- ⑦ MOVE(▲,▼,◀,▶)
- ⑧ SOURCE
- ⑨ REV
- ⑩ FWD
- ⑪ PBC
- ⑫ SUBTITLE
- ⑬ PROGRAM
- ⑭ LANGUAGE
- ⑮ REPEAT
- ⑯ A-B



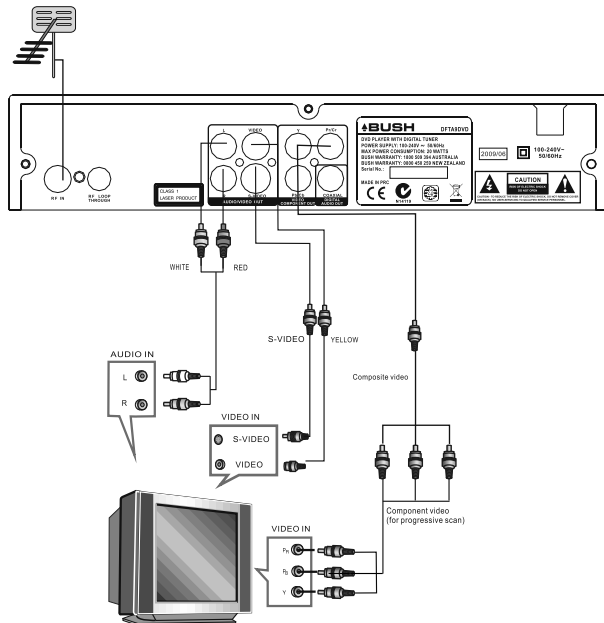
- ⑰ POWER
- ⑱ MUTE
- ⑲ TITLE/TTX
- ⑳ MENU
- ㉑ FAVORITE
- ㉒ GOTO
- ㉓ VOL+/VOL-
- ㉔ STOP
- ㉕ PLAY
- ㉖ RETURN
- ㉗ CH+
- ㉘ ENTER
- ㉙ CH-
- ㉚ TV/RADIO
- ㉛ NEXT
- ㉜ PREV
- ㉝ VIDEO
- ㉞ ZOOM
- ㉟ P/N
- ㊱ L/R
- ㊲ SLOW
- ㊳ ANGLE

Note:

1. In this manual, ◀▶↔↕↖↗ will be used to represent different NAVIGATION ARROWS on the remote respectively.
2. In order to operate any of the remote functions, you must first press the Power button on the DVD player.
3. Some of the keys have multiple functions.

Connecting to a Television

TV Aerial

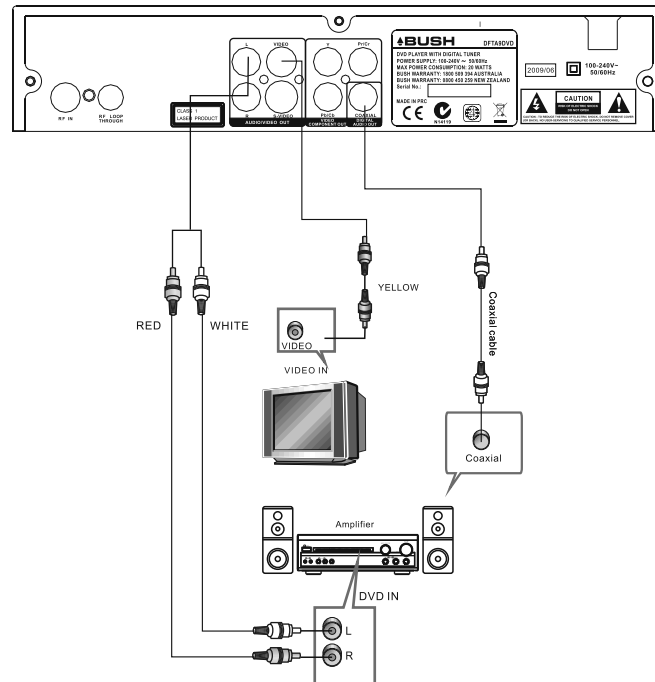


Notes:

There are three ways of connecting the player's AV Output to your Television:

1. S-Video cable or CVBS Video cable [set the (S-Video) to (Video)].
2. Component Video cable [set the (Video) to (INTERLACE-YUV or P-SCAN Y, Pb, Pr)].
3. Left/Right Audio cable [set the (Audio out)].

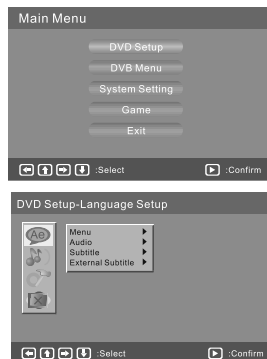
Connecting to an AV Amplifier with 2 Channel Analog Audio Input



The Setup Menu System--DVD

1. General Setup Menu

In the DVD mode, Press the <STOP> button or open mode, then press <SETUP> button for the DVD Main Setup Menu to appear.



DVD Setup-language Setup

Press the Up/Down button to select the DVD Setup Menu and enter the Language Setup option.

1). LANGUAGE

Highlight the MENU option and press the Arrow buttons to choose the language you prefer. Press <ENTER> to confirm. If the disc you are playing has that language available, it will be displayed in the Language Menu.

Notes:

If your preferred language is not available, the discs default language will be played.

2). AUDIO

Highlight the AUDIO option and press the Arrow buttons to choose the audio language you prefer. Press <ENTER> to confirm.

3). SUBTITLE

Highlight the SUBTITLE option and press the Arrow buttons to choose the subtitle language you prefer. Press <ENTER> to confirm.

4). EXTERNAL SUBTITLE

Highlight the EXTERNAL SUBTITLE option and press the Arrow buttons to choose the supported subtitle language.

DVD Setup-Audio Setup

Press the <DOWN> Arrow button to highlight the Audio Setup option on the screen.

1).DIGITAL OUT

Highlight the Digital Out option and press the Arrow buttons to choose the Audio Output mode you prefer.

Press Enter to confirm. There are three Audio Output modes: SPDIF / RAW, SPDIF/ PCM, OFF.

Notes:

When Digital Output is NOT in use, it is recommended to turn " OFF " , the Digital Output setting for the purpose of minimising the circuit interference.

2). ANALOG OUT

Highlight the Analog Out option and press the Arrow buttons to choose the Audio Output mode you prefer. Press <ENTER> to confirm.

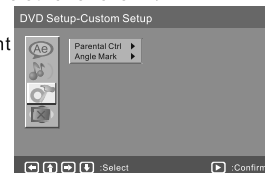
NOTE: If you choose OFF cut off Analog Audio Output.

3). DOWNMIX

There are two modes, one is LO/RO and the other one is LT/RT.

DVD Setup-Custom Setup

Press the <Down> arrow button to highlight the Custom Setup option on the screen.



1). PARENTAL CTRL

If you want to set the Parental Control setting enter the default password (6666). Now enter your own password to set.

If the input code has been confirmed, the Level Setup Menu will appear. Move the cursor to choose the accepted level and press <ENTER> button to confirm and save.

2) ANGLE

You can choose to have the Angle function on or off.

In the On mode you will be able to view the disc playing from multiple angles(depending on the disc options).

DVD Setup-Exit

Press the <DOWN> arrow button to highlight the <EXIT> option on the screen.

In the DVD Setup-Exit, choose the Exit option to return the DVD Main Setup.

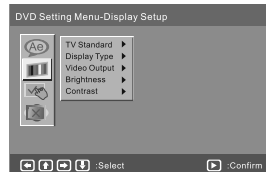
2. DVD Mode of System Setting

Press the <SETUP> button and the DVD Main Setup Menu appears the screen, then press the <DOWN> button to highlight the system setting option.



System Setting Menu-Display Setup

Press the <DOWN> Arrow button to highlight the Setup option on the screen.



1).TV STANDARD

According to the Color System your TV, you can choose the TV Standard.

2).DISPLAY TYPE

According to the Display Type, you can choose 4:3PS,4:3LB or 16:9.

3).VIDEO OUTPUT

According to the Output Jack of the TV set, you can choose CVBS(Video)+S-VIDEO, CVBS(Video)+YUV, YUV+ P-SCAN.

4).BRIGHTNESS

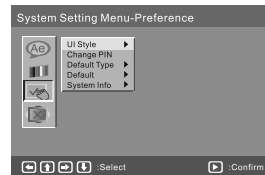
According to the Brightness, you can choose Normal, Bright or soft .

5).CONTRAST

Use the <UP> and <DOWN> arrow buttons to move the scroll and adjust the contrast.

C. System setting Menu-Preference

Press the <DOWN> arrow button to highlight the Preference option on the screen.



1). UI Style

According to UI Style, you can choose Style1,Style2,Style3,Style4.

2). Default Type

In the Default Type options, you can choose the DVD MODE, DVB MODE, USER SELECT MODE, LAST OPERATION TYPE MODE.

NOTE: In the Default Type, if you choose the DVB MODE.

That next time you turn on the PLAYER will direct enter DVB MODE, and won't display the Source list.

3). Default

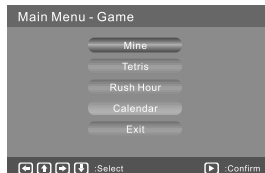
The Default Setup options are Restore Factory Setup.

3. Game Options

Press the <SETUP> button to go to the DVD Main Setup Menu. Then press the <DOWN> button to highlight the Game option.

In the Main Menu-Game Setup, you can choose Mine, Tetris, Rush Hour and Calendar.

For example: If you want to play the Mine Game, you can press the <DOWN> button to highlight the Mine options. Then press the <ENTER> button to enter.



MP3 Playback

When a MP3 disc is loaded, the screen will display as follows:



Press to select the file when the cursor appears in the file window. Press select to play the current file selected by the cursor.

Press to switch between the directory window and the file window.

Kodak picture CD Playback

General function:

- You can set sideshow transition modes for any pictures.
- Press **PAUSE** to stop playing.
- Press **◀▶** to see the previous or next picture.
- Press **PLAY** to continue sideshow transitions.
- Press **STOP** to return to Main Menu.

IMAGE ROTATION

- Press the Arrow buttons () to rotation the image as you prefer.

Zoom function:

This player provides both Zoom in /out and Zoom pan function. Press the ZOOM consecutively, the picture will zoom in/out in turn as follows:

→ ZoomX1 ->ZoomX2->ZoomX3->ZoomX4

The Setup Menu System---DVB

1. First Time Installation

After all the connections have been made properly, switch on your TV. Make sure the receiver is connected to the Mains Power and press <POWER> to switch the receiver on. Then press the 《 Source 》 button to switch to DVB reception. The 《 Source 》 button is to switch among DVD, DVB, and USB. If you are using the receiver for the first time, a **First Time Installation** Menu will be displayed to guide you through the initial -setup. Use the Remote Control to finish the setup.

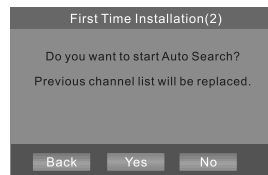
A. At the **First Time Installation** Menu, select **YES** and press the <ENTER> button on the Remote Control to proceed.



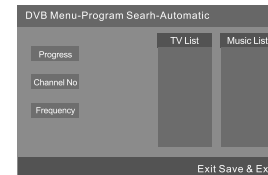
B. Enter your regional settings, include your Country, Language and Time Zone . Then select <NEXT> to proceed.



C. Select **Yes** to start the Automatic Channel Search.



D. Wait till scanning is completed. In case you want to stop the scanning, press the <RETURN> button. The channels already found will still be stored. When finished, all active channels found will be stored automatically. The last found channel will be played.



2. DVB Mode of Main Menu

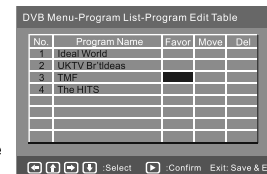
Press the <SETUP> button and the DVB Main Setup Menu will appear. Then press the <DOWN> button to highlight the DVB Menu option.

Press the <UP> and <DOWN> button move on the DVB Menu and press the <ENTER> button to enter the DVB Menu-Program list.



1).TV Program

Press the <RIGHT> button to highlight the TV Program, then press the <ENTER> button to enter the TV program options. All active channels are listed in the **Program List**, allowing you to make your own favorite channel group, move or delete channels.



Create a Favourite Channel Group

This feature allows you to group your favourite channels. To create your favorite groups:

- Select the channel which you would like to add to the group and go to the **Favor** column.
- When the **Favor** column of the desired channel is highlighted, one red heart symbol will appear, after you press <ENTER>.

Pressing the <ENTER> button again will un-select the channel in the favourite group.

- C. Once your favourite group is created, you can press the <FAVOURITE> key to quickly access your favorite channels.

Moving a Channel

- A. Select the channel which you like to move and go to the **Move** column.
B. Press the <ENTER> button and a ↓ ↑ symbol will be displayed.
C. Use the <UP / DOWN> key to move the channel to a desired position.
D. Press the <ENTER> button again to exit the moving channel mode.

Deleting a Channel

- A. Select the channel which you like to delete and go to the **Del** column.
B. Press the <ENTER> button and an X symbol will be displayed. Repeat this step to delete more channels.
C. Press <SETUP> or <RETURN> button and the marked channel will be deleted.
D. Press <ENTER> button again to exit the deleting channel mode.

2). Music Program

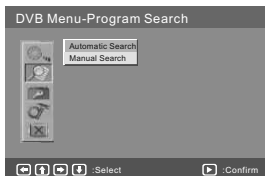
Press the <DOWN> button to highlight the Music Program, then press the <ENTER> button to enter the Music program options.

3). Sort

Press the <DOWN> button to highlight the Sort options. You can choose the channels Sort style: By Name, By Service ID, By Channel No or By LCN.

Press the Up/Down button to select the search option on the DVB Menu Program.

In the DVB Menu-Program Search, you can setup the Automatic Search, Manual Search options.

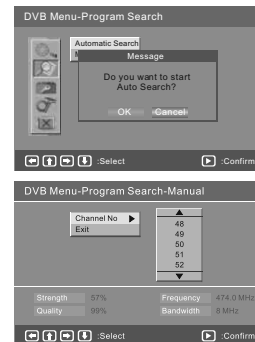


Automatic Search.

Automatic search option will search for channels automatically.

Manual Search.

If any channels are missing after you have completed an Automatic Search or you want to add newly launched channels, you can use **Manual Search** to scan the desired channels. To Manually Search the target channel you must know its parameters (e.g. the channel number). After the channel is found, it is added to the current channel list.



- A. Enter the **Manual Search** Menu via **Main Menu > Program Search > Manual Search**.

B. Specify the appropriate channel number in the **Channel No** field by pressing the <DOWN> and <UP> button. Enter your selection, the frequency and bandwidth values are changed accordingly.

- C. Select <ENTER> button to start Manual Search

D. If no signal is found, a message indicating no signal will appear. Otherwise scanned channel will be saved and added to the current channel list.

4). Parental Control

This feature allows you to prevent children or unauthorized people from watching channels.

- A. Enter **Main Menu > Parental Control**. You will need to enter the default PIN is 6666.

B. After PIN is entered you are provided with the following options:

Channel Lock: Allows you to activate or de-activate the overall Parental Control. When set to **YES**, all the channels with lock settings will be locked.

Parental Setting: In the channel list, select the channel you want to lock and then press <ENTER>.

A padlock symbol will be displayed. To remove the lock, press <ENTER> again.

Parental Setting		
No.	Program Name	Lock
1	DIMO	
2	FTV	
3	FMTV	
4	FTVN	
5	TTV-1	
6	TTV-2	
7	HAKKA	
8	CTS	
9	CTS-IQ	
10	CTS-EQ	

5).Country

Select your country of residence, i.e Australia, England, New Zealand, Germany, etc.



6).Language

Press the <DOWN> button to highlight the Language options, then Press the <ENTER> button to select Language setup.

1st /2nd Audio : This option allows you to select your first and second choice for the Audio Language. If neither of your selected languages are available on the program transmitted, the main language of the program will be used.

Subtitle : Allows you to select the Subtitle Language. If your selected language is not available on the program transmitted, the main language of the program will be used.

7).GMT usage:

Allows you to enable/disable Greenwich Mean Time (GMT) usage.

If you know the GMT time zone of your location, set **GMT usage** to **ON** and select an appropriate time zone.

If you prefer to set the time manually, select **OFF** in **GMT usage** item and then manually select the date and time.

8). Time Zone

Select an appropriate time zone to display the local time correctly.

Both EPG and System Schedule need a correct time zone setting.

9). System Schedule

Press the <DOWN> button to highlight the System Schedule options, then press the <ENTER> button to select the System Schedule Setup. This feature allows the receiver to automatically switch on and tune to a pre-specified channel for a pre-set length of time. Up to 10 tasks can be scheduled.

A. In the System Schedule Menu use the <UP / DOWN> key to select a task and use <RIGHT / LEFT> key to switch between **Inactive** and **Active**.

B. Press <ENTER> to enter the detail page.

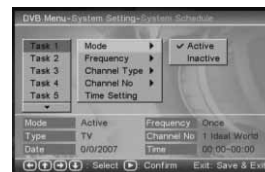
C. Enter the following settings as required. Use the <UP / DOWN> key to move between setting items, the <RIGHT / LEFT> key to switch between available selections and numeric keys to enter numeric value.

Mode: You can repeat the task by setting the frequency as **Once**, **Daily** or **Weekly**. You can select **Stop** to disable the task.

Start and End Time: Enter the start and end time that automatically turns on and off the receiver.

Channel Type: Select TV or Radio channel as required.

Channel No: Select the channel to be played at scheduled time. When the setting is done, press <SETUP> or <RETURN> to save the changes.



Troubleshooting-DVD

If you have any questions, please consult the troubleshooting guide below.

NO PICTURE OR SOUND

- Ensure the power button is on.
- Ensure the power outlet is operational.
- Ensure the power cord is not damaged.
- Ensure the power plug is connected firmly to the outlet.

PICTURE BUT NO SOUND

- Ensure the Audio Jacks are securely connected.
- Ensure the Audio Connector is not damaged.
- Ensure the volume is turned up.
- Ensure you have set the player's Audio Settings correctly.
- Ensure you have entered the correct AV Input for your TV.
- Ensure the audio is not set to mute.

SOUND BUT NO PICTURE

- Ensure the Video Jacks are securely connected.
- Ensure you have entered the correct AV Input for your TV.
- Ensure the Video Connector is not damaged.
- Ensure you have set the player's Video Settings correctly.

POOR PICTURE OR SOUND

- Ensure you have set the player's Audio Settings correctly.
- Ensure the disc is not scratched or stained.
- Ensure the AV Connector or the output terminal is not damaged.

"BAD DISC" DISPLAYED

- Ensure the disc is not warped, damaged or deformed.
- Ensure the disc is not badly stained or damaged.
- Ensure the disc format is compatible with the player.

REMOTE NOT WORKING

- Make sure the Main unit's POWER button is on
- Ensure the Remote batteries are working.
- Point the Remote Control directly at the player's IR sensor.
- Remove any obstacles between the Remote and the IR sensor.

UNIT NOT WORKING

- Turn off the power and then turn it on again.

"NO DISC" DISPLAYED

- Ensure you have put the disc on the tray.
- Ensure the disc is not upside down.
- Ensure the disc is not distorted, stained or scratched.

Troubleshooting-DVB-T

If you experience problems with this receiver or its installation, please read carefully the relevant sections of this User Manual and this Troubleshooting section.

Problem	Possible cause	What to do
Standby light not lit	Mains lead unplugged	Check mains lead
	Mains fuse blown	Check fuse
No signal found	Aerial is disconnected	Check aerial lead
	Aerial is damaged/misaligned	Check aerial
	Out of digital signal area	Check with retailer
No picture or sound	Program not broadcasting	Press the DTV/VCR button
		Re-tune to another channel
Mosaic blocks in picture or picture freezes	Aerial may not be compatible	Check aerial
Scrambled channel message	Channel is scrambled	Select an alternative channel
Locked out of channels	Forgotten channel lock code	Re-install channels to cancel channel lock
No response to Remote Control	Receiver off	Plug in and turn on receiver
	Handset not aimed correctly	Aim handset at front panel
	Front panel obstructed	Check for obstructions
	Remote control batteries are inserted incorrectly	Check batteries direction
	Handset batteries exhausted	Replace Remote Control batteries
After moving the receiver to another room, you can't receive the digital reception	The aerial feed may come through a distribution system which may reduce the digital signal now received by the receiver	Try a direct feed from the antenna

Specifications

Item	Specification	
Tuner	Frequency Range	VHF: 174MHz to 230MHz UHF: 470MHz to 862MHz
	Input Impedance	75 Ohms Unbalanced
	Signal Input Level	-78 ~ -25DBM
	Bandwidth	7 / 8 MHz
Demodulation	Demodulator	COFDM
	OFDM Modulation	2K, 8K FFT, SFN and MFN
	Packet Carries	2K/8K
	Guard Interval	1/4, 1/8, 1/16, 1/32
Connectors	RF IN	IEC 169-2 Female Connector
	RF LOOPTHROUGH	IEC 165-2 Male Connector
	YPbPr	Component Video Output
	Video	CVBS Video Output
	S-Video	Y/C Video Output
	COAXIAL	RCA, for SPDIF Digital Audio Output
	USB JACK	For file Playback or Software Upgrade
Power	Input	100-240V~ 50/60Hz
	Consumption	15 W max.
Display	Decoder Module	PAL, NTSC
	Resolution	720 x 576(PAL); 720 x 480(NTSC).
	Aspect Ratio	4:3 (Letterbox, Pan & Scan), 16:9
Decoding	Video	MPEG2 Transport MP@ML
	Audio	MPEG2 Audio Layer I&II
Others	Compliance	ETSI EN 300 744 DVB-T Compliance
	Sound Mode	Right, Left, Stereo

*Specifications are subject to change without further notice *



You can help protect the environment!
Please remember to hand-in the non-working electrical device to an appropriate waste disposal center.

Warranty

Please keep your receipt as proof of purchase. This product is warranted for any defect in materials or workmanship for one year after the original date of purchase. This product is for normal domestic and office use only. This warranty does not cover damage from misuse or neglect, accidental damage, vermin infestation, excessive voltages such as lightning or power surges or any alteration that affects the performance or reliability of the product.

In the unlikely event that your product fails to work normally, please contact the Bush Warranty on **1800 509 394 (Australia)** or **0800 450 259 (New Zealand)** and have your receipt of purchase on hand.

This warranty is subject to the following provisions:

- It is only valid within the boundaries of the country of purchase.
- The product must be correctly assembled and operated in accordance with the instructions contained in this manual.
- The product must be used solely for domestic purposes.
- The warranty does not cover accidental damage, misuse, cabinet parts or consumable items.
- The warranty will be rendered invalid if the product is resold or has been damaged by inexperienced repair.
- The manufacturer disclaims any liability for incidental or consequential damages.

This warranty is in addition to, and does not diminish, your statutory or legal rights.

PO BOX 6287,
SILVERWATER NSW 1811
www.bushaustralia.com.au
Bush Warranty: 1800 509 394 Australia
Bush Warranty: 0800 450 259 New Zealand

PO BOX 6287,
SILVERWATER NSW 1811
www.bushaustralia.com.au