

BACTRACK® SingleShot™

Breath Alcohol Test

INSTRUCTIONS

Before You Test

- Read These Instructions Completely
- Do Not Use If Expired
- Make Sure Crystals Are Yellow Before Using The Test

This Is Not a Self Test. You Should Never Test Yourself. Alcohol impairs judgement. Have someone who has not been drinking help you conduct the test and read the results.

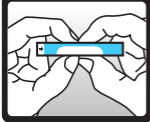
STEP 1



Wait 15 Minutes After Last Alcoholic Drink.

If the test subject cannot wait, have subject rinse his/her mouth with water before taking the test. This removes alcohol vapors in the mouth that could cause a false positive result.

STEP 2

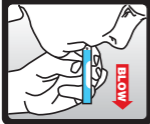


Squeeze Only Once, Do Not Crush or Bend Tube.

Squeeze the middle of the Detector between thumb and forefinger to break inner glass tube.

Use the Detector immediately.

STEP 3



Hold Vertically So Arrows Are Pointing Down and Blow for 12 Seconds.

Subject should hold Detector vertically so arrows on "BLOW" end are pointing down. Subject should then BLOW/EXHALE very hard into tube, in one continuous breath, for 12 seconds. Shake the Detector side-to-side to distribute the crystals evenly in Detector window. Lay Detector on flat surface and WAIT 2 MINUTES.

STEP 4

Read The Results



Positive Results: Most of crystals are a light **AQUA** (**GREEN/BLUE**, **BLUE/GREEN**) cast. This shows that the breath alcohol is at or above the level printed on the Detector.



Negative Results: Most of the crystals, are light **YELLOW**. This shows that the breath alcohol is below the level printed on the Detector.

The **YELLOW** does not have to match the unused Detector. It may be much lighter or paler **YELLOW** than an unused Detector.

- The color change may be difficult to see under certain lighting. For best results, read under lighting such as incandescent, fluorescent, or indirect sunlight. A flashlight with an incandescent bulb can be used to help read the result. Hold the flashlight to the side so that the light does not fall directly on the Detector.
- Compare results to an unused Detector or to the **Yellow** box. If most of the crystals are not **GREEN** or **BLUE** (under the suggested lighting), then the result is negative.
- Detector results may not be reliable if testing is not conducted according to these instructions.

Please see other side of this pamphlet for important information.

Read All Instructions Before Beginning the Test

Intended Use: BACTRACK® SingleShot™ Alcohol Detector is a test for alcohol in human breath. It is a disposable screening device for one-time use.

Test System: The Detector is based on indicator chemistry that changes color in the presence of breath that contains alcohol. See our website for more information on the chemistry of the Detector. Detectors are calibrated to turn positive at or above a specific level of alcohol in the breath. This level is called the cut-off. The cut-off is printed on the left side of the Detector label. For example, the Detector labeled .08% will turn positive when the breath contains or exceeds .08 percent alcohol.

Preparation and Storage

The Detector is ready to use. Use the Detector immediately after breaking glass tube.

Storage Conditions: 4 to 122°F or -15 to 50°C.

The lot number and “Use By” date is printed on the Detector or the package label. Do not use the Detector after the “Use By” date.

Warnings, Precautions, and Limitations

- Alcohol impairs judgement. Do not test yourself OR drive if you have been drinking. Someone who has not been drinking should help conduct the test and read the result.
- Do not use the Detector if the glass tube containing crystals is broken or the crystals are not Yellow before you begin Step 1 of the instructions.
- Detector results should not be interpreted by readers who are color-blind, visually impaired, or under the influence of alcohol or any other substance that may impair their vision or judgement.
- Detector result is best viewed under white light (incandescent, fluorescent or indirect sunlight). It may be hard to read Detector results under certain streetlights or under dim lighting. Under yellow streetlights (sodium vapor), green colors may look gray-green; blue colors may look gray-white. Under blue-white streetlights (mercury vapor) yellow may look amber-green. A flashlight with an incandescent bulb, held to the side of the detector, may be used to help read the result under these lighting conditions.
- Lighting studies were performed following NHTSA (National Highway Traffic Safety Administration) guidelines. Detector results were read under 5 lighting conditions. The results met the guidelines except for 1 reading. There was 1 false positive out of 1200 readings of the .04 Detector for a sample that did not contain alcohol.
- Compare the Detector result to the yellow box on this pamphlet or to an unused detector of the same lot number to help you see if the Detector has turned GREEN or BLUE indicating a positive result.
- Keep out of reach of children. Do not immerse in liquid.
- DO NOT EAT the contents of the Detector. This Detector contains potassium dichromate, a hazardous chemical. If eaten, induce vomiting and contact your doctor.
- The Detector should only be used as a screening device and is only an indication of the possible presence of alcohol in the blood of the subject. Although breath alcohol levels have been shown to represent blood alcohol levels, the correlation depends on many factors. The exact level of alcohol in the blood cannot be accurately determined by using the Detector.
- The Detector does not determine or detect the intoxication of the subject. Decision's and/or actions based on the use of this device by any person shall be at person's own risk.
- A positive result should be taken as a warning that the subject may have detectable alcohol in their system. A positive result should be confirmed by an evidentiary alcohol test before any legal or workplace actions are taken.
- There may be times that a person tests negative and later show that he/she is under the influence of alcohol or their judgement had been impaired by alcohol.

For *In Vitro* Diagnostic Use

Technical Assistance: If you have any questions or concerns please call 1-877-334-6876 or email us at info@bactrack.com. Visit our website for further information, www.bactrack.com

Distributed by KHN Solutions LLC, 300 Broadway, Suite 26, San Francisco, CA 94133
MADE IN USA



Do Not Drink and Drive