



## INSTALLATION INSTRUCTIONS FOR PART OESWC-8113-RF

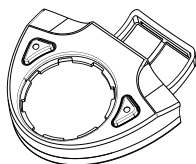
### OESWC-8113-RF

The OESWC-8113-RF is designed to allow you to add steering wheel control options to 2003 and up Toyota vehicles with an amplified system. With a factory radio that has the 20 pin connector, the RF controlled OESWC-8113-RF will allow the customer to adjust their radio without taking their eyes off the road. The OESWC-8113-RF will come preprogrammed with your most popular features, volume up, volume down, seek up, seek down, and source. But with the option of remapping the buttons to fit every customer needs, this makes this a must have interfaces that the Axxess line offers.

### INTERFACE COMPONENTS

- A) OESWC Transmitter
- B) OESWC Interface
- C) Center Keypad
- D) Trim Ring
- E) Strap Cover
- F) Vehicle T-Harness

A



B



C



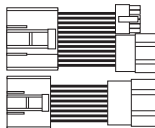
D



E

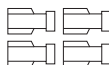
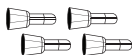
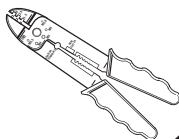
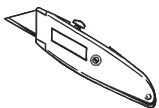


F



### TOOLS REQUIRED FOR INSTALLATION

- Cutting Tool
- Tape
- Crimping Tool
- Connectors (I.E. butt-connectors, bell caps, ECT...)



1-800-221-0932



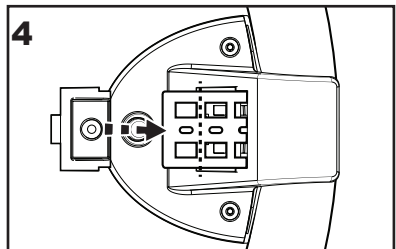
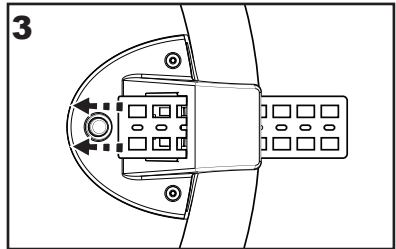
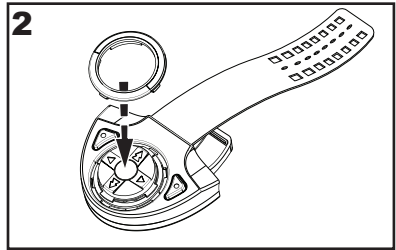
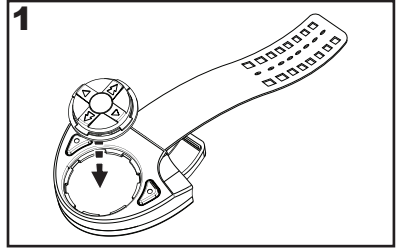
[axxessinterface.com](http://axxessinterface.com)

© COPYRIGHT 2004-2011 METRA ELECTRONICS CORPORATION



## Mounting The RFASWC Transmitter

1. Place button pad in the OESWC transmitter with the volume up arrow (^) in the spot where you want volume up to be.(fig. 1)
2. Snap in trim ring to secure keypad in place. (fig. 2)
3. Install the OESWC transmitter in desired place on steering wheel, wrapping the rubber strap around the steering wheel, through the slot, and hook it into the back side of the transmitter. (fig. 3)
4. Cut off the unused portion of the rubber strap and screw in strap cover with provided screw. (Do not over tighten screw) (fig.4)





## **Wiring The OESWC Interface**

1. Connect the red wire to 12 volt accessory
2. Connect the Black wire to ground (you may use the same ground that you use for the aftermarket radio)

## **Setting Up The OESWC Transmitter**

1. Press the Red and Green buttons simultaneously for 5 seconds, and then press volume up for two seconds. This will orientate your button direction.
2. Turn on the ignition and press volume up on the OESWC transmitter. This will "marry" the transmitter to the interface.

NOTE: If you are replacing a transmitter you must turn on the ignition and within the first 10 seconds press and hold the source button for ten seconds. This will "marry the new transmitter.

## **Programming The OESWC Transmitter**

1. Complete connections to the factory radio
- \* If this is the first time the OESWC TRANSMITTER is being installed in a vehicle:
2. Turn the ignition on; the led will start flashing rapidly which means the OESWC interface is looking for the vehicle. Go to step 4.

Or

- \* If the OESWC TRANSMITTER was installed in a vehicle before:
2. Turn the ignition on, the led will flash once.
  3. Hold down the reset button for more then 2 seconds but less then 10 seconds, the led will start flashing rapidly
  4. After a couple of seconds the led should stop flashing and not light up



for 2 seconds.

5. This is the end of the auto detection stage. If the OESWC TRANSMITTER detected the vehicles radio successfully the led will light up solid red.
6. Make sure the steering wheel control buttons function correctly in the vehicle and enjoy your radio.

So what if the led does not light up solid red? Check out troubleshooting section below.

### **Troubleshooting the Auto Detect Mode**

So you tried the auto detect feature and at the end the led did not stay on solid red, it started flashing. That means the OESWC TRANSMITTER did not detect the vehicles radio. Follow these couple steps to determine what happened:

#### **First some basic steps:**

1. Verify that you have 12 volt accessory and a good ground to the OESWC interface.
2. Verify that the battery is good on the OESWC transmitter.
3. Refer to the "Setting up the OESWC transmitter" section of this manual and repeat those steps.



\_\_\_\_\_

10. *Journal of the American Medical Association*, 2000; 284: 2689-2695.



\_\_\_\_\_

\_\_\_\_\_



1. *Journal of the American Medical Association*, 2000; 283: 2689-2696.

10. *Journal of the American Medical Association*, 2000; 284: 2689-2695.



## INSTALLATION INSTRUCTIONS FOR PART OESWC-8113-RF



### KNOWLEDGE IS POWER

Enhance your installation and fabrication skills by enrolling in the most recognized and respected mobile electronics school in our industry. Log onto [www.installerinstitute.com](http://www.installerinstitute.com) or call 800-354-6782 for more information and take steps toward a better tomorrow.



**Metra recommends MECP certified technicians**

REV. 2/4/11



**1-800-221-0932**



**[axxessinterface.com](http://axxessinterface.com)**

© COPYRIGHT 2004-2011 METRA ELECTRONICS CORPORATION