



**IMPORTS, INC.**

# **DUST COLLECTOR**

**MODEL G1028/G1029**

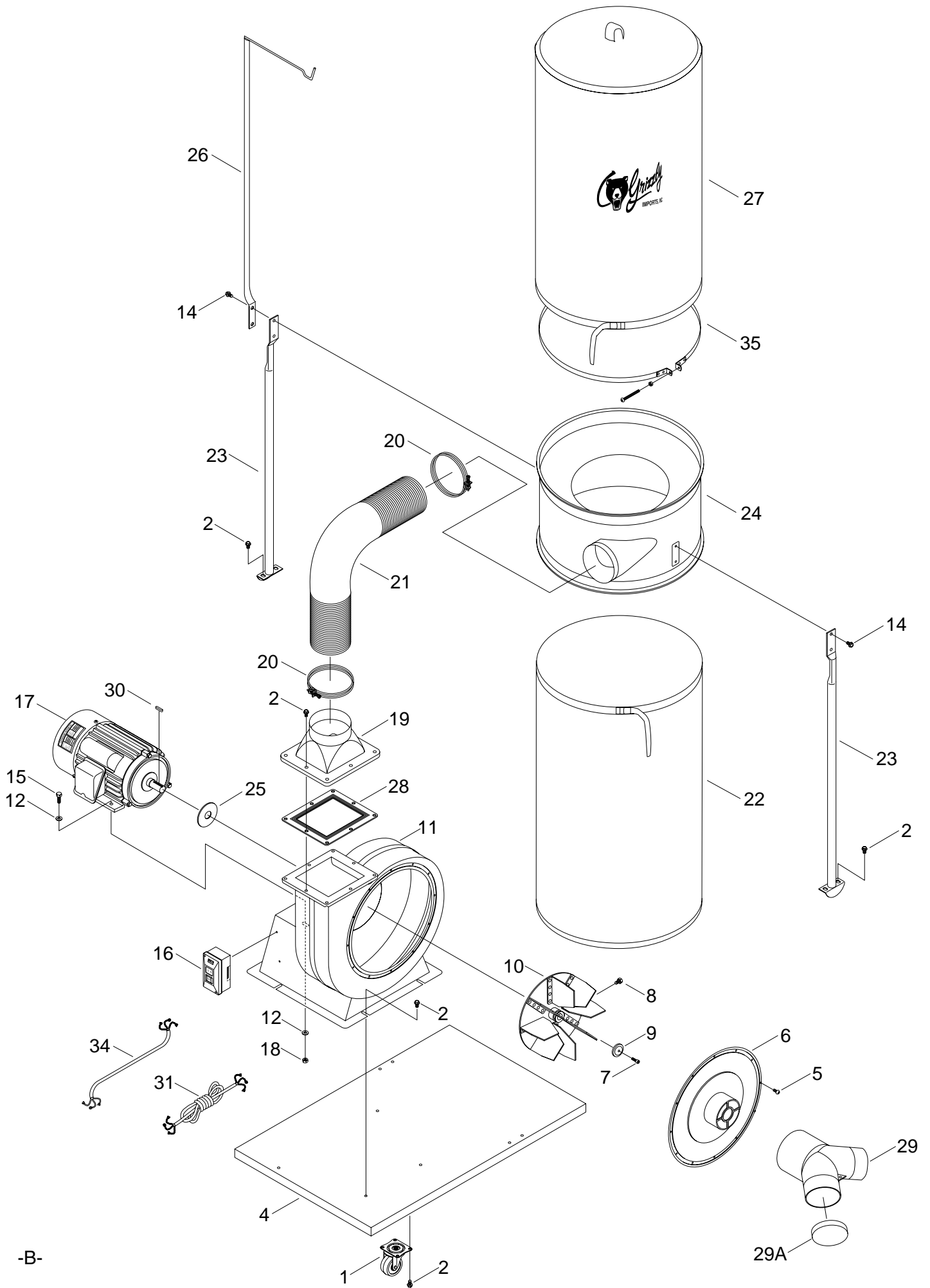
## **PARTS LIST**



COPYRIGHT © 1991 BY GRIZZLY INDUSTRIAL, INC. REG # TX 3170576  
**WARNING: NO PORTION OF THIS MANUAL MAY BE REPRODUCED IN ANY SHAPE  
OR FORM WITHOUT THE WRITTEN APPROVAL OF GRIZZLY INDUSTRIAL, INC.**  
REVISED JUNE, 1997. PRINTED IN TAIWAN

### **DISCONTINUED MACHINE PARTS LIST DISCLAIMER**

THESE PARTS REPRESENT THE LAST CONFIGURATION OF THE MACHINE BEFORE IT WAS DISCONTINUED. MACHINE CONFIGURATIONS MAY HAVE CHANGED AS PRODUCT IMPROVEMENTS WERE INCORPORATED. IF YOU OWN AN EARLIER VERSION OF THE MACHINE, THIS PARTS LIST MAY NOT EXACTLY DEPICT YOUR MACHINE. CONTACT CUSTOMER SERVICE IF YOU HAVE ANY QUESTIONS ABOUT PART DIFFERENCES. PREVIOUS PARTS LIST VERSIONS ARE NOT AVAILABLE ONLINE.



-B-

REF	PART #	DESCRIPTION
1	P1028001	CASTER
2	PFB01	FLANGE BOLT $\frac{5}{16}$ " - 18 x $\frac{1}{2}$ "
4	P1028004	BASE PLATE
5	PS06	PHLP HD SCREW
6	P1028006	INLET COVER (G1028)
6	P1029006	INLET COVER (G1029)
7	P1028007	CAP SCREW
8	PB09	HEX BOLT $\frac{5}{16}$ " - 18 x $\frac{1}{2}$ "
9	P1028009	SPECIAL WASHER
10	P1028010	10" IMPELLER (G1028)
10	P1029010	12" IMPELLER (G1029)
11	P1028011	COLLECTOR BODY
12	PW07	FLAT WASHER $\frac{5}{16}$ "
14	PFB01	FLANGE BOLT $\frac{5}{16}$ " - 18 x $\frac{1}{2}$ "
15	P1028015	BOLT $\frac{5}{16}$ " - 18 x 1"
16	PSW04	SWITCH
17	P1028017	MOTOR, 1HP (G1028)
17	P1029017	MOTOR, 2HP (G1029)
18	PN02	HEX NUT $\frac{5}{16}$ " - 18
19	P1028019	OUTLET
20	P1028020	HOSE CLAMP
21	P1028021	HOSE
22	G1027	BAG, LOWER
23	P1028023	COLLECTOR SUPPORT
24	P1028024	COLLECTOR
25	P1028025	PACKING (G1028)
25	P1029025	PACKING (G1029)
26	P1028026	UPPER BAG SUPPORT
27	G1027	BAG, UPPER
28	P1028028	GASKET
29	P1029028	Y-INLET (G1029 ONLY)
29A	P1029029A	INLET CAP (G1029 ONLY)
30	PK32M	KEY 6 x 6 x 28 (G1028)
30	PK28M	KEY 7 x 7 x 29 (G1029)
31	P1028031	POWER CORD
34	P1028034	MOTOR CORD
35	P1028035	FILTER CLAMP