

# DUST COLLECTOR

## MODEL G1032

# INSTRUCTION MANUAL



COPYRIGHT © 1992 BY GRIZZLY INDUSTRIAL

**WARNING: NO PORTION OF THIS MANUAL MAY BE REPRODUCED IN ANY SHAPE OR FORM WITHOUT THE WRITTEN APPROVAL OF GRIZZLY INDUSTRIAL, INC.**

REVISED NOVEMBER, 1997. PRINTED IN USA

#### **DISCONTINUED MACHINE MANUAL DISCLAIMER**

THE INFORMATION IN THIS MANUAL REPRESENTS THE LAST CONFIGURATION OF THE MACHINE BEFORE IT WAS DISCONTINUED. MACHINE CONFIGURATIONS MAY HAVE CHANGED AS PRODUCT IMPROVEMENTS WERE INCORPORATED. IF YOU OWN AN EARLIER VERSION OF THE MACHINE, THIS MANUAL MAY NOT EXACTLY DEPICT YOUR MACHINE. CONTACT CUSTOMER SERVICE IF YOU HAVE ANY QUESTIONS ABOUT DIFFERENCES. PREVIOUS VERSIONS ARE NOT AVAILABLE ONLINE.

# WARNING

Some dust created by power sanding, sawing, grinding, drilling, and other construction activities contains chemicals known to the State of California to cause cancer, birth defects or other reproductive harm. Some examples of these chemicals are:

- Lead from lead-based paints.
- Crystalline silica from bricks, cement, and other masonry products.
- Arsenic and chromium from chemically treated lumber.

Your risk from these exposures varies, depending on how often you do this type of work. To reduce your exposure to these chemicals: work in a well ventilated area, and work with approved safety equipment, such as those dust masks that are specially designed to filter out microscopic particles.

# Table Of Contents

	PAGE
<b>1. SAFETY</b> .....	2
SAFETY RULES FOR ALL TOOLS .....	2
ADDITIONAL SAFETY INSTRUCTIONS FOR DUST COLLECTORS.....	3
<b>2. CIRCUIT REQUIREMENTS</b> .....	4
G110 VOLT WIRING.....	4
GROUNDING .....	4
<b>3. GENERAL INFORMATION</b> .....	5
UNPACKING .....	6
PIECE INVENTORY .....	6
SITE CONSIDERATIONS .....	7
<b>4. ASSEMBLY</b> .....	8
BEGINNING ASSEMBLY .....	8
BASE .....	8
SUPPORT COLUMN.....	9
FAN / MOTOR.....	9
COLLECTOR.....	10
BAGS.....	10
<b>5. OPERATIONS</b> .....	11
TEST RUN.....	11
SET UP .....	11
MOBILE .....	12
STATIONARY .....	12
SYSTEM GROUNDING .....	13
<b>7. MAINTENANCE</b> .....	14
GENERAL .....	14
LUBRICATION .....	14
<b>8. CLOSURE</b> .....	15
PARTS BREAKDOWN AND PARTS LISTS.....	16
MACHINE DATA .....	17
WARRANTY AND RETURNS.....	18
WARRANTY CARD.....	19

# SECTION 1: SAFETY

---

---

## WARNING: For Your Own Safety Read Instruction Manual Before Operating Collector

- a) Always wear eye protection.
- b) Always keep guards in place and in proper operating condition.
- c) Keep hands away from inlet during operation.

## Safety Instructions For Power Tools

These safety rules cannot cover every situation in a work shop. Consider your conditions when setting up or operating your dust collector.

1. **KEEP GUARDS IN PLACE** and in working order.
2. **REMOVE ADJUSTING KEYS AND WRENCHES.** Form habit of checking to see that keys and adjusting wrenches are removed from tool before turning on.
3. **KEEP WORK AREA CLEAN.** Cluttered areas and benches invite accidents.
4. **DON'T USE IN DANGEROUS ENVIRONMENT.** Don't use power tools in damp or wet locations, or expose them to rain. Keep work area well lighted.
5. **KEEP CHILDREN AND VISITORS AWAY.** All children and visitors should be kept a safe distance from work area.
6. **MAKE WORK SHOP CHILD PROOF** with padlocks, master switches, or by removing starter keys.
7. **DON'T FORCE TOOL.** It will do the job better and safer at the rate for which it was designed.
8. **USE RIGHT TOOL.** Don't force tool or attachment to do a job for which it was not designed.
9. **USE PROPER EXTENSION CORD.** Make sure your extension cord is in good condition. When using an extension cord, be sure it is rated Hard Service (grade S) or better. Conductor size must be 16 A.W.G. for cords up to 100 feet in length. An undersized cord will cause a drop in line voltage resulting in loss of power and overheating. Your extension cord must also contain a ground wire and plug pin. Always repair or replace extension cords if they become damaged. Minimum Gage for extension cord:

16 A.W.G.	50ft
16 A.W.G.	100ft
14 A.W.G.	200ft
12 A.W.G.	300ft
10. **WEAR PROPER APPAREL** Do not wear loose clothing, gloves, neckties, rings, bracelets, or other jewelry which may get caught in moving parts. Non-slip footwear is recommended. Wear protective hair covering to contain long hair.
11. **ALWAYS USE SAFETY GLASSES.** Also use face or dust mask if cutting operation is dusty. Everyday eyeglasses only have impact resistant lenses, they are NOT safety glasses.

12. **SECURE WORK.** Use clamps or a vise to hold work when practical. It's safer than using your hand and frees both hands to operate tool.
13. **MAINTAIN TOOLS WITH CARE.** Keep tools sharp and clean for best and safest performance. Follow instructions for lubricating and changing accessories.
14. **DISCONNECT TOOLS** before servicing and changing accessories, such as blades, bits, cutters, and the like.
15. **REDUCE THE RISK OF UNINTENTIONAL STARTING.** Make sure switch is in off position before plugging in.
16. **USE RECOMMENDED ACCESSORIES.** Consult the owner's manual for recommended accessories. The use of improper accessories may cause risk of injury.
17. **DON'T OVERREACH.** Keep proper footing and balance at all times.
18. **CHECK FOR DAMAGED PARTS.** Before further use of the tool, a guard or other part that is damaged should be carefully checked to determine that it will operate properly and perform its intended function-check for alignment of moving parts, binding of moving parts, breakage of parts, mounting, and any other conditions that may affect its operation. A guard or other part that is damaged should be properly repaired or replaced.
19. **DIRECTION OF FEED.** Feed work into a blade or cutter against the direction of rotation of the blade or cutter only.
20. **NEVER LEAVE TOOL RUNNING UNATTENDED. TURN POWER OFF.** Don't leave tool until it comes to a complete stop.

## Additional Safety Instructions For Dust Collectors

1. This dust collector is to be used for wood dust collection only. **DO NOT** use this dust collector to pick up liquids and metal scrap including nails and filings. *Metallic debris will contact the spinning impeller and could spark. The spark could then cause a sawdust explosion and severe fire hazard.* Also, **DO NOT** pick up material which cannot safely pass through the impeller such as solid wood scraps.
2. **DO NOT** place your hands or tools near the open inlet during operation for any reason including unclogging material and testing suction. *The impeller could cause serious damage to body parts if touched while spinning.*
3. Suspended dust particles in conjunction with an ignition source may cause an explosion. **DO NOT** operate the dust collector in areas where explosion risks would be high if dust were dispersed into the area. Areas of high risk include areas near pilot lights and/or open flames.
4. Problems concerned with any moving part(s) or accessories must be investigated and corrected with the power disconnected and after everything has come to a complete stop.
5. **DO NOT** allow steel to strike against steel which may produce a spark. Sparks can smolder in wood dust for a long time before fire or flame is detected. If metal contacts metal during operation, immediately turn off the dust collector, unplug the power cord from the outlet or throw the disconnect and wait for all moving parts to stop. Remove collection bags and empty the dust into an approved air tight metal container in case of spark and remedy the metal to metal contact problem before resuming operation.
6. When emptying dust from the collection bags, wear a respirator and safety glasses. Empty dust into an approved container and dispose of properly.

# SECTION 2: CIRCUIT REQUIREMENTS

## 110V Wiring

Your Model G1032 Dust Collector operates ideally at 110V, single phase power. The 1 HP motor will draw roughly 8 amps at 110 volts. These loads are not excessive, but if you operate your machine on any circuit that is already close to capacity, it might blow a fuse or trip a circuit breaker. If an unusual load does not exist, and power failure still occurs, consult a qualified electrician. Otherwise, consider a dedicated circuit for your machine.

A 110V plug is provided with the G1032.

In the case of 220V operation, please call the service department for further information.



## Grounding

**CAUTION:** THIS TOOL MUST BE GROUNDED WHILE IN USE TO PROTECT THE OPERATOR FROM ELECTRIC SHOCK.

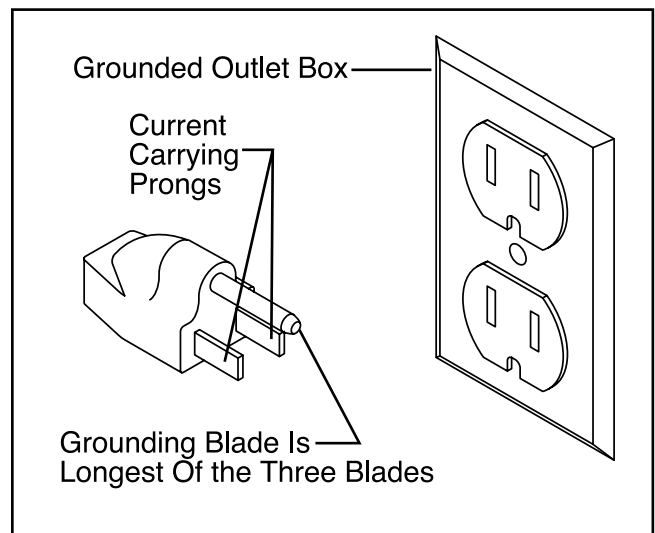
In the event of a malfunction or breakdown, grounding provides a path of least resistance for electric current to reduce the risk of electric shock. This tool is equipped with an electric cord having an equipment-grounding conductor. The grounding conductor must be connected to the grounding pin on the plug. The plug must be plugged into a matching outlet that is properly installed and grounded in accordance with all local codes and ordinances.

Improper connections of the electrical-grounding conductor can result in risk of electric shock. The conductor with green or green and yellow striped insulation is the electrical-grounding conductor. If repair or replacement of the electric cord or plug is necessary, do not connect the equipment grounding conductor to a live terminal.

Under no circumstances should the grounding pin from any three-pronged plug be removed. If it will not fit the outlet, have the proper outlet installed by a qualified electrician.

Check with a qualified electrician or one of our service personnel if the grounding instructions are not completely understood, or if in doubt as to whether the tool is properly grounded. Use only 3-wire extension cords that have 3-prong grounding type plugs and 3-hole receptacles that accept the tool's plug. **Figure 1.**

Repair or replace damaged or worn cord immediately.



**Figure 1.**



# SECTION 3: GENERAL INFORMATION

---

Grizzly Industrial, Inc. is proud to offer the Model G1032 Dust Collector. This dust collector is a part of Grizzly's growing family of fine machinery. When used according to the guidelines set forth in this manual, you can expect years of trouble-free, enjoyable operation and proof of Grizzly's commitment to customer satisfaction.

The G1032 Dust Collector is the smallest stand up model in our broad line of dust collectors. Standard features for the dust collector includes a push button switch, cyclone collector, and two large filter/collection bags. The G1032 has a 1 HP motor which is pre-wired for 110/120V and a 4" intake port. Air movement is 450 cubic feet per minute with a static pressure of 2.76". We also offer a full line of optional accessories to build a collection system for a single machine or a complete shop including a two-stage adapter and a dust collection reference book. All accessories are offered through the current Grizzly catalog.

We are also pleased to provide this manual for the Model G1032. It was written to guide you through assembly, review safety considerations, and cover general operating procedures. It represents our latest effort to produce the best documentation possible. If you have any criticisms that you feel we should address in our next printing, please write to us at the Bellingham, WA address at the end of this section.

Most important, we stand behind our machines. We have excellent regional service departments at your disposal should the need arise. If you have any service questions or parts requests, please call or write to us at the location listed below.

Grizzly Industrial, Inc.  
1203 Lycoming Mall Circle  
Muncy, PA 17756  
Phone:(570) 546-9663  
Fax:(800) 438-5901  
E-Mail: techsupport@grizzly.com  
Web Site: <http://www.grizzly.com>

To comment on this manual write to:

Grizzly Industrial, Inc.  
% Technical Documentation  
P.O. Box 2069  
Bellingham, WA 98227

To operate this or any power tool safely and efficiently, it is essential to become as familiar with it as possible. The time you invest before you begin to use your Model G1032 will be time well spent. **DO NOT** operate this machine until you are completely familiar with the contents of this manual.

# Unpacking

---

---

The Model G1032 Dust Collector is shipped from the manufacturer in a carefully packed carton. If you discover the machine is damaged after you've signed for delivery, *please call Customer Service immediately for advice.*

Save the containers and all packing materials for possible inspection by the carrier or its agent. *Otherwise filing a freight claim can be difficult.*

**Caution:** This Dust Collector is a relatively heavy and awkward machine (78 lbs). **DO NOT** over-exert yourself while unpacking or moving your machine – get assistance. In the event that your Dust Collector must be moved up or down a flight of stairs, be sure that the stairs are capable of supporting the combined weight of people and the machine.

When you are completely satisfied with the condition of your shipment, you should inventory its parts.



# Piece Inventory

---

---

After all the parts have been removed from the carton, you should have:

- Motor / Fan Assembly
- Base
- Collection/Filter Bags
- Lower Support Column
- Casters (4)
- Rubber Gasket
- Hex Bolts  $\frac{1}{4}$ "-20 x  $\frac{1}{2}$ " (6)
- Hex Bolts  $\frac{5}{16}$ "-18 x  $\frac{3}{4}$ " (8)
- Phlp Hd Screws 10-24 x  $\frac{1}{2}$ " (16)
- Nuts  $\frac{5}{16}$ "-18 (4)
- Flat Washers  $\frac{5}{16}$ " (4)
- Allen Wrench 4mm
- Allen Wrench 5mm

In the event that any non-proprietary parts are missing (e.g. a nut or a washer), we would be glad to replace them, or, for the sake of expediency, replacements can be obtained at your local hardware store.





# Site Considerations

---

---

When placing the G1032 Dust Collector in your shop, three major considerations should be addressed: working clearances, lighting and electrical, and circuit loading.

- 1. Working Clearances:** Be sure to allow yourself sufficient room to safely operate your machines **in any foreseeable operation.** Consider existing and anticipated machine needs, anticipated size of material to be processed through each machine, and space for auxiliary stands and/or work tables. You may also want to consider the relative position of each machine to one another for efficient material handling.

- 2. Outlets:** Electrical circuits should be dedicated or large enough to handle motor amp loads and proper lighting. Outlets should be located near each machine so power or extension cords are not obstructing high-traffic areas. Be sure to observe local electrical codes for proper installation if you are adding new lighting, outlets, or circuits.



# SECTION 4: ASSEMBLY

---

---

## Beginning Assembly

---

---

Assembly of the G1032 is straightforward. We have organized the assembly process into steps. Please follow them in sequence.

**Caution:** All die-cut metal parts have a sharp edge (called “flashing”) on them after they are formed. This is removed at the factory. Sometimes though, a bit of flashing might escape inspection. Please examine the edges of all die-cut metal parts before handling them.

**Tools Required:** 10/12mm open end wrench, regular and Phillips head screwdriver.

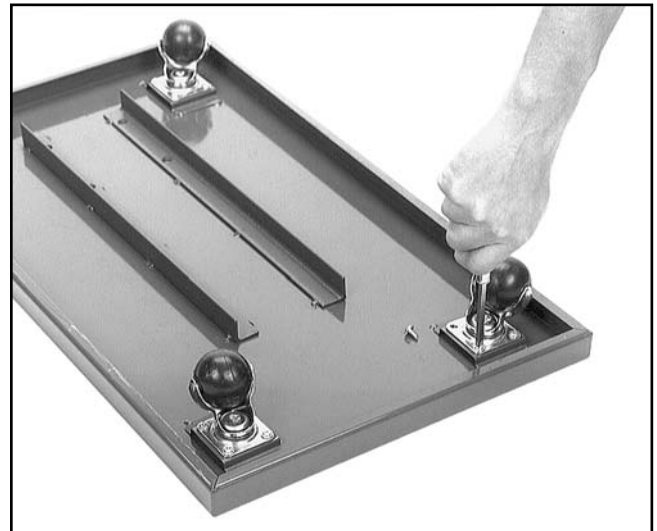


## Base

---

---

Position the base plate upside down and locate the casters so they are within easy reach. Mount the casters to the base plate using sixteen 10 - 24 x 1/2" Phillips Head Screws provided. **Figure 2.**



**Figure 2.**



---

---

# Support Column

There is one support column that holds the collector body & fan/motor assembly and the collector. Attach it to the base plate using the four (4)  $\frac{5}{16}$ " - 18 x  $\frac{3}{4}$ " hex bolts provided. **Figure 3.**



**Figure 3.**



---

---

# Fan / Motor

The collector body includes the fan assembly, switch, and motor which are preassembled at the factory. Set the collector body on top of the upper column plate so the intake portion faces the long portion of the base. Secure the collector body to the base plate with four (4)  $\frac{5}{16}$ " - 18 x  $\frac{3}{4}$ " bolts,  $\frac{5}{16}$ " - 18 nuts, and  $\frac{5}{16}$ " washers provided. **Figure 4.**



**Figure 4.**



# Collector

---

---

The collector attaches to each support bracket. The inside of the collector is funnel shaped and directs the air around in a cyclone motion. Make sure that the inside taper (funnel) is faced downward and the collector inlet faces toward the collector body. **Figure 5.**



**Figure 5.**

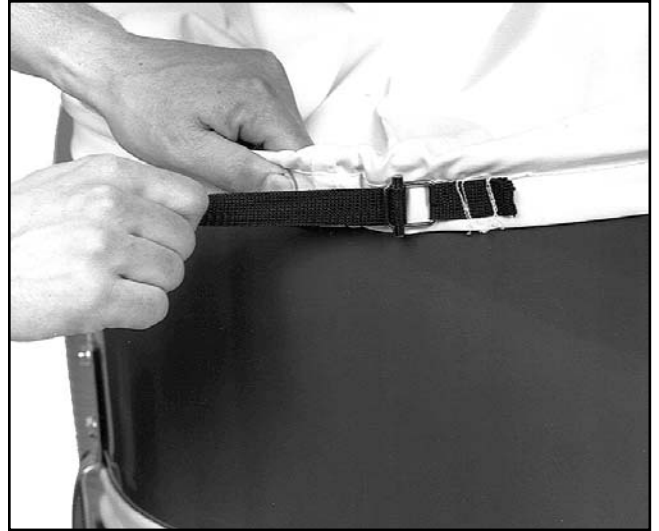


# Bags

---

---

Slip the collection bag over the bottom edge of the collector and pull the strap tight to secure. Slip the filter bag over the top edge of the collector and pull the strap tight to secure. **Figure 6.**



**Figure 6.**



# SECTION 6: OPERATIONS

---

---

## Test Run

---

---

Please review the safety rules if you are not sure about the risks associated with operating this machine. Turn on the power supply at the main panel if not already on. Flip toggle switch on and be ready to switch off just in case there is a problem. The dust collector should run smoothly and be free of vibration or rubbing noises. Unusual or strange sounds or symptoms must be investigated and the problem corrected before proceeding further.

**WARNING:** Make sure the G1032 is unplugged and moving parts have come to a complete stop before investigating any problems or performing any maintenance or adjustments.

If everything is running smoothly, perform a test of the dust collector. Ensure that the collector picks up sawdust freely and easily. If it does not, review the assembly process and your duct system.



## Set Up

---

---

The G1032 dust collectors can be either operated as mobile or stationary units. There are advantages and disadvantages to both systems. The primary advantage of a mobile system is low expense of ducts and fittings. On the other hand a stationary system is more versatile and convenient.

You may wish to locate your dust collector away from the work area in an adjacent room or closet. If you do locate the dust collector in an adjacent room by running a duct through the wall, be sure there are no open flames and/or gas appliances with pilot lights. There is a risk of explosion if dust is dispersed into the air. You must also ensure that the volume of air entering the room or closet is properly vented back into the workshop.

**IMPORTANT:** The maximum size and extent of any particular stationary system is limited and dependent upon the size and power of the dust collector.

**WARNING:** Ensure that all duct work is grounded to discharge the build-up of static electricity, particularly if using a plastic duct system. See **System Grounding, Page 13**.



# Mobile

---

---

For mobility, the G1032 is mounted on casters and can be moved within close proximity to one or two woodworking machines, depending on the model. You will need a flexible duct to connect each machine with a collection hood. If you wish to specifically direct air flow while the dust collector is attached to more than one machine, you will need to add a blast gate for each machine.

When moving the dust collector around the shop, you must consider clearances between obstacles and accessibility to convenient electrical outlets. A heavy-duty extension cord may be used if an outlet is not convenient.



# Stationary

---

---

The G1032 can be set up as a stationary unit with the addition of a fixed duct system to service more than one machine at a time. The primary advantage of a stationary system is it eliminates the process of disconnecting and moving the dust collector, hoses and cords, and eliminates hoses and cords laying on the floor. Another advantage of a stationary system is it allows the dust collector to be located away from the work area, reducing noise and freeing up valuable workshop space. Grizzly offers a complete line of dust collection accessories for setting up a stationary system. Additionally, Grizzly offers a complete guide book for setting up stationary dust collection systems. Please refer to our current catalog for pricing and ordering information.

A stationary system configuration usually has a main duct with smaller ducts branching to each machine. The main duct should be located out of the way of normal operations and be accessible for the branch ducts. Branch ducts are permanently attached to each machine by way of collection hoods. Air flow is controlled by blast gates located in the branch ducts and near each machine. Remote switches, available from electrical supply stores, can be added to make the system even more convenient.

To design a stationary system, you must consider many interrelated factors such as, shop layout, woodworking machine capacities, and general duct efficiency. Design considerations for a stationary dust collection system are beyond the scope of this manual. As stated above, [Dust Collection Basics](#), offered by Grizzly, is an excellent resource for dust collection questions.



# System Grounding

---

Since plastic hose is abundant, relatively inexpensive, easily assembled, and airtight, it is a very popular material for conveying dust from woodworking machines to the dust collector. We recommend using flexible hose (flex-hose) to connect the woodworking machine to the dust collector. However, plastic piping, including plastic flex-hose, is an insulator, and dust particles moving against the walls of the pipe create a static electrical charge build-up. This charge will build until it discharges to ground. If a grounding medium is not available to prevent static electrical charge build-up, the electrical discharge will arc, similar to lightning. This electrical discharge may cause an explosion and subsequent fire inside the system.

To protect against static electrical charge build-up inside a non-conducting duct, a bare copper wire should be placed inside the duct along its length and grounded to the dust collector. Please ensure that the dust collector is continuously grounded through the electrical circuit to the electric service panel.

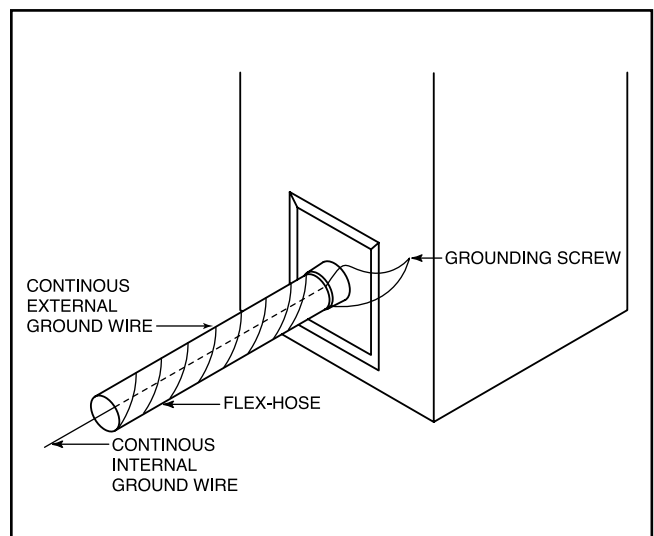
If you connect the dust collector to more than one machine by way of a non-conducting branching duct system and blast gates, the system must still be grounded as mentioned above. We recommend inserting a continuous bare copper grounding wire inside the entire duct system and attaching the wire to each grounded woodworking machine and dust collector.

Be sure that you extend the bare copper wire down all branches of the system. Do not forget to connect the wires to each other when two branches meet at a Y or T connection. Use wire nuts.

Ensure that the entire system is grounded. If using blast gates to direct air flow, the grounding wire must be jumped around the blast gate without interruption to the grounding system.

We also recommend wrapping the outside of all plastic ducts with bare copper wire to ground the outside of the system against static electricity build-up. Wire connections at Y's and T's should be made with wire nuts.

Attach the bare ground wire to each stationary woodworking machine and the dust collector frame with a ground screw. Ensure that each machine is continuously grounded to the grounding terminal in your electric service panel.



**Figure 7.**



# SECTION 7: MAINTENANCE

---

---

## General

---

---

Periodic maintenance will ensure safe operation, long dust collector life, and low overall cost of operation.

Routinely check the condition of the following items and repair or replace as necessary:

1. Loose mounting bolts, collector body, outlet, and support bracket mounting bolts.
2. Worn switch.
3. Worn or damaged cords and plugs.
4. Worn or damaged collection/filter bag.
5. Any other condition that could hamper the safe operation of this machine.

**IMPORTANT:** Always empty the collection bag before it becomes full. Machine efficiency is greatly increased when the collection bag is empty.



## Lubrication

---

---

Shielded and pre-lubricated ball bearings require no lubrication on your part for the life of the bearings. Bearing life is dependent upon use. All bearings are common sizes.





# SECTION 8: CLOSURE

---

The following pages contain parts diagram, parts list, general machine data and Warranty/Return information for your Model G1032 Dust Collector.

If you need parts or help in assembling your machine, or if you need operational information, we encourage you to call the appropriate regional Service Department. Our trained service technicians will be glad to help you.

If you have comments dealing specifically with this manual, please write to our Bellingham, Washington location using the address in the Introduction. The specifications, drawings, and photographs illustrated in this manual represent the Model G1032 as supplied when the manual was prepared. However, due to Grizzly's policy of continuous improvement, changes may be made at any time with no obligation on the part of Grizzly. Whenever possible, though, we send manual updates to all owners of a particular tool or machine. Should you receive one, add the new information to this manual and keep it for reference.

We have included some important safety measures that are essential to this machine's operation. While most safety measures are generally universal, Grizzly reminds you that each workshop is different and safety rules should be considered as *they apply to your specific situation*.

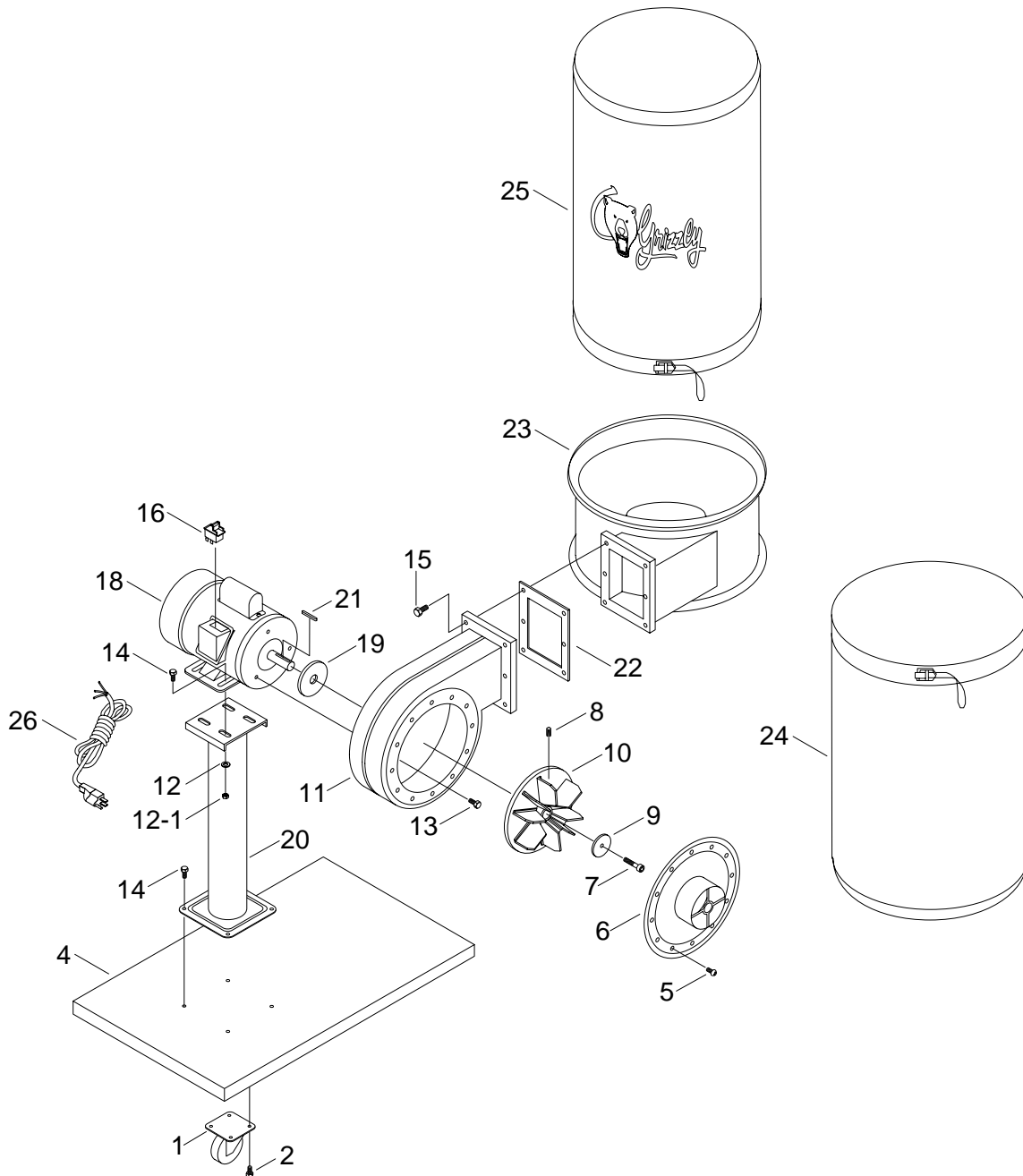
We recommend you keep a copy of our current catalog for complete information regarding Grizzly's warranty and return policy. If you need additional technical information relating to this machine, or if you need general assistance or replacement parts, please contact our Service Department listed in the General Information.

Additional information sources are necessary to realize the full potential of this machine. Trade journals, woodworking magazines, and your local library are good places to start.

## **WARNING!**

*As with all power tools, there is danger associated with the Model G1032 Dust Collector. Use the tool with respect and caution to lessen the possibility of mechanical damage or operator injury. If normal safety precautions are overlooked or ignored, injury to the operator or others in the area is likely.*

The Model G1032 was specifically designed for dust collecting operations. **DO NOT MODIFY AND/OR USE THIS DUST COLLECTOR FOR ANY OTHER PURPOSE. Modifications or improper use of this tool will void the warranty.** If you are confused about any aspect of this machine, **DO NOT** use it until you have answered all your questions.



REF	PART #	DESCRIPTION
01	P1032001	CASTOR
02	PS01	PHLP HD SCREW 10-24 X 1/2
04	P1032004	BASE
05	PS06	PHLP HD SCREW 10-24 X 3/8
06	P1032006	INLET COVER
07	P1032007	SPECIAL CAP SCREW
08	P1032008	SETSCREW
09	P1032009	SPECIAL WASHER
10	P1032010	FAN
11	P1032011	COLLECTOR BODY
12	PW07	FLAT WASHER 5/16"
13	P1032013	BOLT
14	PFB02	FLANGE BOLT

REF	PART #	DESCRIPTION
15	PFB03	FLANGE BOLT
16	PSW07	SWITCH
18	P1032018	MOTOR
19	P1032019	PACKING
20	P1032020	COLUMN
21	PK34M	KEY 5 X 5 X 20
22	P1032022	GASKET
23	P1032023	COLLECTOR
24	G1034	LOWER BAG
25	G1034	UPPER BAG
26	P1032026	POWER CORD
28	PAW05M	ALLEN WRENCH 5MM
29	PAW04M	ALLEN WRENCH 4MM

# GRIZZLY MODEL G1032 DUST COLLECTOR

**Design Type:**.....Single Stage - Upright on Casters

## Overall Dimensions & Specifications:

Base.....15" x 25 5/8" x 1/2"  
Height .....56 1/2"  
Intake Hole Size .....4"  
Bag Size.....14 1/2" x 23"  
Bag Capacity (Each) .....2.2 cu. ft.  
Bag Material .....Fabric  
Shipping Weight (Two Cartons) .....30 lbs & 47 lbs  
Impeller Size .....9"  
Air Suction Capacity (CFM).....450 CFM  
Static Pressure (Inches of Water) .....2.76 @ 6"

## Construction:

Base .....Fabricated Sheet Metal with Casters  
Impeller Type .....Radial  
Impeller Blade Thickness .....3/32" Steel - Riveted On

## Motor:

Type .....TEFC Capacitor Start Induction Motor  
Horsepower .....1HP  
Phase/Cycle.....Single/60 HZ  
Voltage .....110V  
Switch .....On/Off Toggle With Safety Lock  
Amps .....14  
RPM .....3450  
Bearings.....Sealed & Lubricated-for-Life, Ball Bearing

*Specifications, while deemed accurate, are not guaranteed.*

# WARRANTY AND RETURNS

---

---

Grizzly Industrial, Inc. warrants every product it sells for a period of **1 year** to the original purchaser from the date of purchase. This warranty does not apply to defects due directly or indirectly to misuse, abuse, negligence, accidents, repairs or alterations or lack of maintenance. This is Grizzly's sole written warranty and any and all warranties that may be implied by law, including any merchantability or fitness, for any particular purpose, are hereby limited to the duration of this written warranty. We do not warrant or represent that the merchandise complies with the provisions of any law or acts unless the manufacturer so warrants. In no event shall Grizzly's liability under this warranty exceed the purchase price paid for the product and any legal actions brought against Grizzly shall be tried in the State of Washington, County of Whatcom.

We shall in no event be liable for death, injuries to persons or property or for incidental, contingent, special, or consequential damages arising from the use of our products.

To take advantage of this warranty, contact us by mail or phone and give us all the details. We will then issue you a "Return Number", which must be clearly posted on the outside as well as the inside of the carton. We will not accept any item back without this number. Proof of purchase must accompany the merchandise.

The manufacturers reserve the right to change specifications at any time because they constantly strive to achieve better quality equipment. We make every effort to ensure that our products meet high quality and durability standards and we hope you never need to use this warranty.

Please feel free to write or call us if you have any questions about the machine or the manual.

Thank you again for your business and continued support. We hope to serve you again soon.

# WARRANTY CARD

Name \_\_\_\_\_  
Street \_\_\_\_\_  
City \_\_\_\_\_ State \_\_\_\_\_ Zip \_\_\_\_\_  
Phone Number \_\_\_\_\_ E-Mail \_\_\_\_\_ FAX \_\_\_\_\_  
MODEL # \_\_\_\_\_ Order # \_\_\_\_\_

The following information is given on a voluntary basis. It will be used for marketing purposes to help us develop better products and services. Of course, all information is strictly confidential.

1. How did you learn about us?

Advertisement  Friend  
 Catalog  Card Deck  
 World Wide Web  
 Other \_\_\_\_\_

2. Which of the following magazines do you subscribe to.

American Woodworker  Practical Homeowner  
 Cabinetmaker  Shop Notes  
 Family Handyman  Today's Homeowner  
 Fine Homebuilding  WOOD  
 Fine Woodworking  Wooden Boat  
 Home Handyman  Woodshop News  
 Journal of Light Construction  Woodsmith  
 Old House Journal  Woodwork  
 Popular Mechanics  Woodworker  
 Popular Science  Woodworker's Journal  
 Popular Woodworking  Workbench  
 Other \_\_\_\_\_

3. Which of the following woodworking/remodeling shows do you watch?

Backyard America  The New Yankee Workshop  
 Home Time  This Old House  
 The American Woodworker  Woodwright's Shop  
 Other \_\_\_\_\_

4. What is your annual household income?

\$20,000-\$29,999  \$60,000-\$69,999  
 \$30,000-\$39,999  \$70,000-\$79,999  
 \$40,000-\$49,999  \$80,000-\$89,999  
 \$50,000-\$59,999  \$90,000 +

5. What is your age group?

20-29  50-59  
 30-39  60-69  
 40-49  70 +

6. How long have you been a woodworker?

0 - 2 Years  8 - 20 Years  
 2 - 8 Years  20+ Years

7. How would you rank your woodworking skills?

Simple  Advanced  
 Intermediate  Master Craftsman

8. What stationary woodworking tools do you own? Check all that apply.

Air Compressor  Panel Saw  
 Band Saw  Planer  
 Drill Press  Power Feeder  
 Drum Sander  Radial Arm Saw  
 Dust Collector  Shaper  
 Horizontal Boring Machine  Spindle Sander  
 Jointer  Table Saw  
 Lathe  Vacuum Veneer Press  
 Mortiser  Wide Belt Sander  
 Other \_\_\_\_\_

9. How many of your woodworking machines are Grizzly? \_\_\_\_\_

10. Which benchtop tools do you own? Check all that apply.

1" x 42" Belt Sander  6" - 8" Grinder  
 5" - 8" Drill Press  Mini Lathe  
 8" Table Saw  10" - 12" Thickness Planer  
 8" - 10" Bandsaw  Scroll Saw  
 Disc/Belt Sander  Spindle/Belt Sander  
 Mini Jointer  
 Other \_\_\_\_\_

11. How many of the machines checked above are Grizzly? \_\_\_\_\_

12. Which portable/hand held power tools do you own? Check all that apply.

Belt Sander  Orbital Sander  
 Biscuit Joiner  Palm Sander  
 Circular Saw  Portable Planer  
 Detail Sander  Saber Saw  
 Drill/Driver  Reciprocating Saw  
 Miter Saw  Router  
 Other \_\_\_\_\_

13. What machines/supplies would you like Grizzly Industrial to carry?

12" Table Saw  Radial Arm Saw  
 12" Jointer  Panel Saw  
 Combination Planer/Jointer  Brass Hardware  
 Paint & Finishing Supplies  Lumber  
 Contractor's Supplies  
 Other \_\_\_\_\_

14. What new accessories would you like Grizzly Industrial to carry?

Builders Hardware  Hand Tools  
 Fasteners  Wood Components  
 Other \_\_\_\_\_

15. What other companies do you purchase your tools and supplies from?  
\_\_\_\_\_  
\_\_\_\_\_

16. Do you think your purchase represents good value?

Yes  No

17. Would you recommend Grizzly Industrial to a friend?

Yes  No

18. Would you allow us to use your name as a reference for Grizzly customers in your area? **Note: We never use names more than three times.**

Yes  No

19. Comments: \_\_\_\_\_  
\_\_\_\_\_  
\_\_\_\_\_  
\_\_\_\_\_

CUT ALONG DOTTED LINE

FOLD ALONG DOTTED LINE

---

---

---

Place  
Stamp  
Here



**GRIZZLY INDUSTRIAL, INC.  
P.O. BOX 2069  
BELLINGHAM, WA 98227-2069**

FOLD ALONG DOTTED LINE

Send a Grizzly Catalog to a friend:

Name _____
Street _____
City _____ State _____ Zip _____

TAPE ALONG EDGES--PLEASE DO NOT STAPLE