

# Quick Start Guide



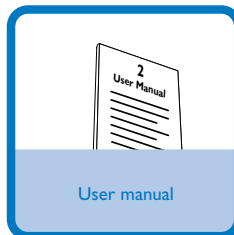
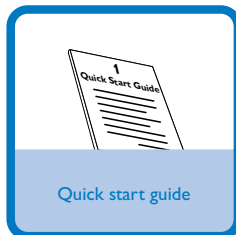
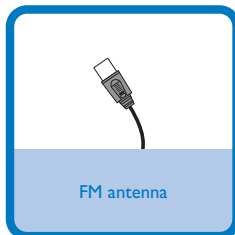
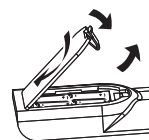
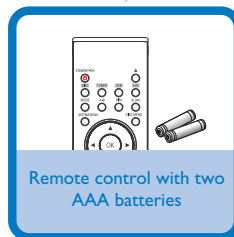
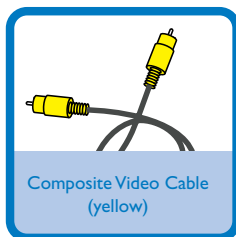
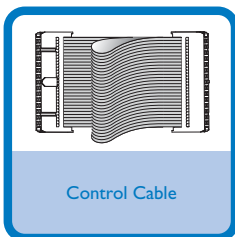
Step A *Connect*

Step B *Setup*

Step C *Enjoy*

## What's in the Box?

You should find these items upon opening the box.



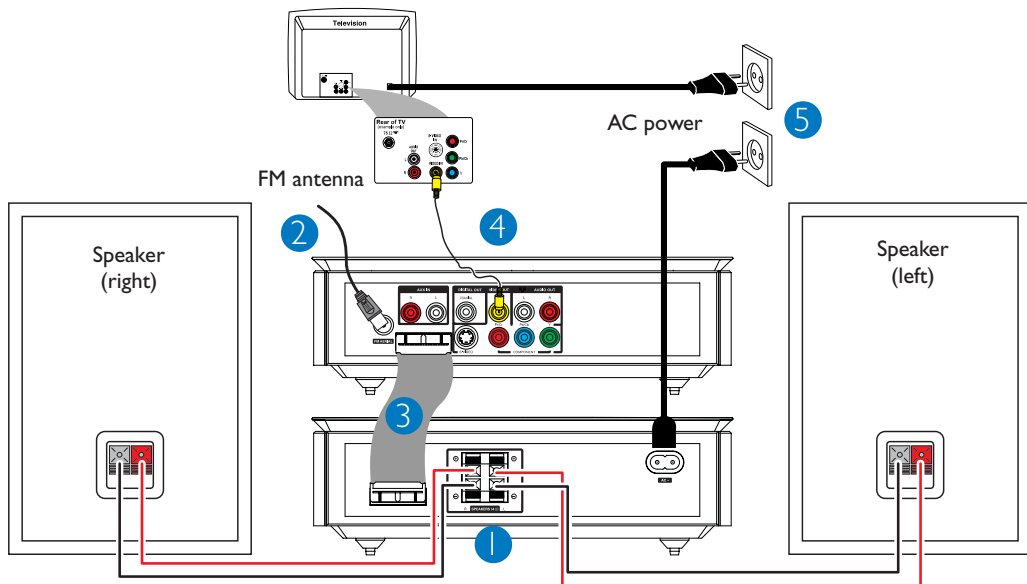
# PHILIPS

## Step A **Connect**

### Tips

- See the User Manual for other TV connection options.
- For connecting to a Progressive Scan TV, refer to the user manual for proper connections and detailed setup.

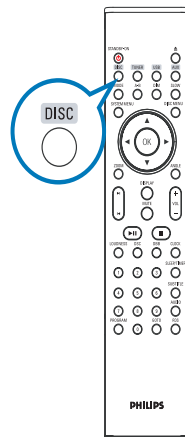
- 1 Connect the speaker cables.
- 2 Connect the FM antenna.
- 3 Connect the control cable.
- 4 Connect the composite video cable to a TV.
- 5 Connect the power cords of the system and TV.



## Step B **Setup**

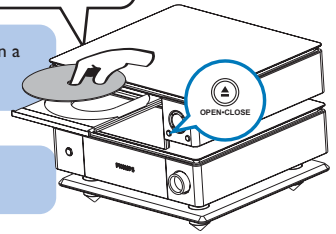
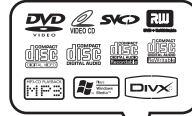
### Setting up the TV

- 1 Press **SOURCE** (DISC on the remote) to select disc source.
- 2 Turn on the TV and set it to the correct Video In channel.





## Playing a disc



1 Press **OPEN-CLOSE** (▲ on the remote control) to open the disc tray and load in a disc, then press the same button again to close the disc tray.  
→ Make sure the label side of the disc is facing up.

2 Playback will start automatically. If not press ▶||.

3 To stop playback, press **PRESET-■** (■ on the remote).

## Programming and tuning to radio stations

1 Press **SOURCE** (**TUNER** on the remote) to select tuner source.

2 Press **PROGRAM** on the remote for more than two seconds to program all available stations in order of waveband.

3 Press **PRESET+/-** (◀/▶ on the remote) until the desired preset station is displayed.

## Playing a USB mass storage device

With the Hi-Fi system, you can use USB flash memory (USB 2.0 or USB1.1), USB flash players (USB 2.0 or USB1.1), memory cards (requires an additional card reader to work with this Hi-Fi system).

1 Insert the USB device's USB plug into the socket → on the set.

2 Press **SOURCE** once or more (or **USB** on the remote control) to select **USB**.

3 Play the USB's audio files as you do with the albums/tracks on a CD,

### Tip

Detailed playback features and additional functions are described in the accompany owner's manual.

### Notes for remote control:

- First, select the source you wish to control by pressing one of the source select keys on the remote control (DISC or TUNER, for example).
- Then select the desired function (▶||, ◀, ▶ for example).

