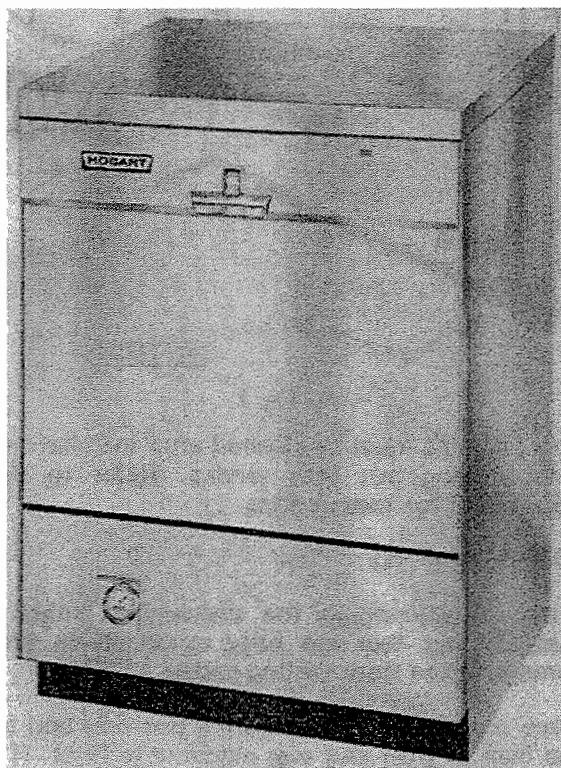




INSTRUCTION MANUAL

... with Replacement Parts



MODELS WM-1 SERIES DISHWASHERS

(INCLUDES MOTOR PARTS)

ML-34000 - WM-1
ML-34002 - WMP-1
ML-34001 - WM-1D
ML-34003 - WMP-1D

Installation, Operation and Care of WM-1 SERIES DISHWASHERS

Save These Instructions

GENERAL

The WM-1 series dishwashers are fully automatic, front loading machines. They are equipped with a Hobart-built, 1/2 H.P., electric motor and are available for 115 V., 60 Hz., 1 Ph. electrical service only.

Standard equipment includes two standard 20" x 20" racks, a dial thermometer, synchronous timer, pilot light, and line strainer(s).

The rack carrier will accommodate most racks from 10" x 20" (half rack) to standard 20" x 20" racks.

The WM-1 dishwasher is an undercounter model and is equipped with front panels. The WMP-1 is equipped with front, side, and top panels, as well as a gasket fitted completely around the four bottom edges to seal machine to the floor.

The WM-1D and WMP-1D dishwashers incorporate separate fill lines for wash and rinse water.

INSTALLATION

NOTE: Immediately after unpacking, machine should be inspected for possible damage. If this machine is found to be damaged after unpacking, save the packing material and contact the shipper.

The lower front panel (1, Fig. 1) must be removed to gain access to the terminal box. Remove two screws (2, Fig. 1). Pull out bottom of panel slightly to disengage ears (3, Fig. 1); then pull panel down and out from retaining clips (4, Fig. 1) to remove.

LOCATION

WM-1, WM-1D

Place the machine in its operating position.

Level the machine front to back by placing a level on the frame and adjusting the feet as necessary.

To level the machine side to side, open the door, place a level on the door and adjust the feet as necessary.

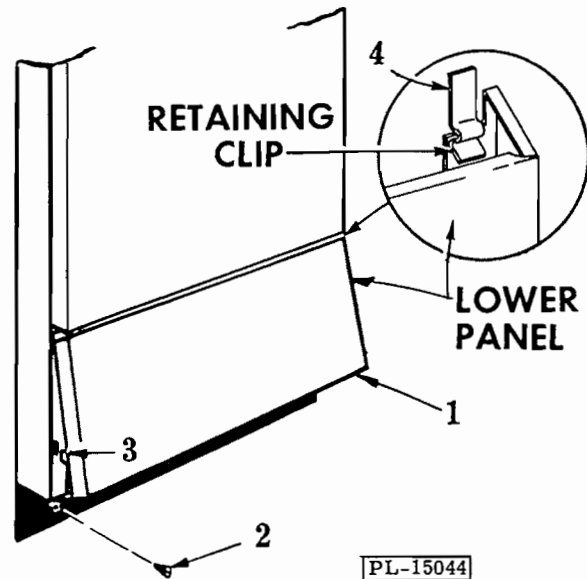


Fig. 1

This machine must be cleaned after installation and before being put into service. Refer to MAINTENANCE for instructions.

WMP-1, WMP-1D

Prior to positioning the dishwasher, make sure that all four feet are fully extended to prevent damage to the floor sealing gasket.

Place machine in its operating position and adjust the feet to level and seal machine to floor. If floor is uneven, it may be necessary to fill any cracks between gasket and floor with a silicone rubber compound (not supplied).

This machine must be cleaned after installation and before being put into service. Refer to MAINTENANCE for instructions.

PLUMBING

WARNING: PLUMBING CONNECTIONS MUST COMPLY WITH APPLICABLE SANITARY, SAFETY, AND PLUMBING CODES.

Fill

The minimum fill water temperature for the WM-1/WMP-1 must be 165°F. at the dishwasher.

The minimum fill water temperatures for the WM-1D/WMP-1D must be 150°F. for the wash water and 180°F. for the rinse water.

Flow pressure must be 15-25 P.S.I. If flow pressure exceeds 25 P.S.I., a pressure reducing valve (not supplied) must be installed in the supply line(s).

A 1/2" line strainer (supplied) must be installed in each supply line.

A manual shutoff valve(s) (not supplied) should be installed in the supply line to accommodate servicing of the machine.

Connect the fill line(s) using the 1/2" female connection(s) (Fig. 2) provided on dishwasher.

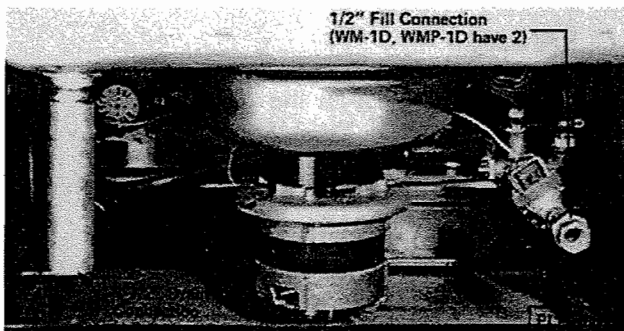


Fig. 2

Drain

Drain height must be no more than 10" above base of machine.

A 1-1/2" connection (Fig. 2) is provided for the drain which should be connected through a "P" trap (not supplied). Drain must have a minimum flow capacity of 10 gallons per minute.

ELECTRICAL CONNECTIONS

Before making electrical connections, check the specifications on the data plate (Fig. 3) to assure they agree with those of your electrical service.

WARNING: ELECTRICAL AND GROUNDING CONNECTIONS MUST COMPLY WITH THE APPLICABLE PORTIONS OF THE NATIONAL ELECTRICAL CODE AND/OR OTHER LOCAL ELECTRICAL CODES.

WARNING: DISCONNECT ELECTRICAL POWER SUPPLY AND PLACE A TAG AT DISCONNECT SWITCH INDICATING CIRCUIT IS BEING WORKED ON.

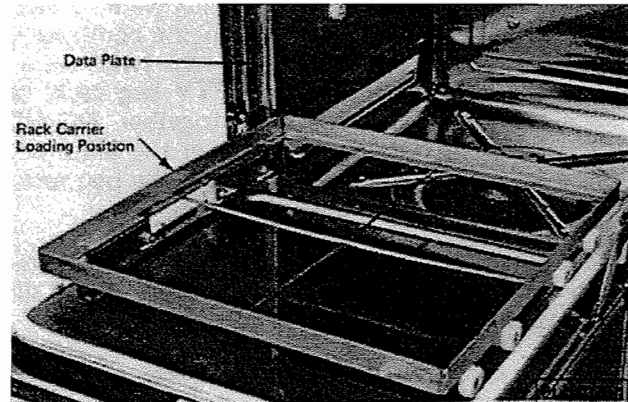


Fig. 3

**BRANCH CIRCUIT SIZE AND PROTECTION
DUAL ELEMENT TIME-DELAY FUSE**

Volts	Phase	Minimum Circuit Ampacity	Maximum Fuse Size	60°C Copper Wire Size
115	1	15	15	14

INVERSE TIME CIRCUIT BREAKER

Volts	Phase	Minimum Circuit Ampacity	Maximum Circuit Breaker Size	60°C Copper Wire Size
115	1	15	15	14

Remove the terminal box cover. A hole, for a 1/2" electrical strain relief is supplied in the bottom of the terminal box.

Connect the **white** lead to terminal **L2** of the terminal block. Connect the **black** lead to terminal **L1**. Connect **green** lead to terminal **GND**. Replace terminal box cover and front panel.

OPERATION

Thoroughly scrape the dishes to remove particles of food and debris.

When racking dishes, do not stack one on top of another as water must have free access to both sides of every dish.

Stand plates and flat dishes edgewise in the peg rack.

Cups, glasses, and bowls should be placed open-side down in the combination rack.

Knives, forks, spoons, and other small items should be scattered loosely over the bottom of the

combination rack. To help prevent water pressure from forcing light objects out of the combination rack, it is advisable to place this rack (with ware to be washed) on top of an EMPTY peg rack, and place both racks in dishwasher together. DO NOT try to wash two racks of dishes at the same time. When using the combination rack, the peg rack is to be used as a spacer only.

Unlatch and open the door and slide the rack carrier out (Fig. 3). Place rack on carrier and slide them into dishwasher.

Deposit approximately one tablespoon of the proper commercial detergent onto the inside door panel before closing door.

NOTE: Consult a local detergent supplier for the type and quantity of detergent best suited for your locality.

Close door and latch handle. The pilot light (Fig. 4) will glow until cycle is completed. If it is necessary to open the door during operation, unlatch door handle, wait for pump to stop, and open door. When the door is closed and latched, cycle will automatically resume where it was interrupted.

When the cycle is completed, the pilot light will go out. Unlatch and open door. Slide the clean rack out, remove it, and the dishwasher is ready for a repeat operation.

The thermometer (Fig. 4) is provided for convenience in checking the incoming water temperature and should be monitored occasionally to assure

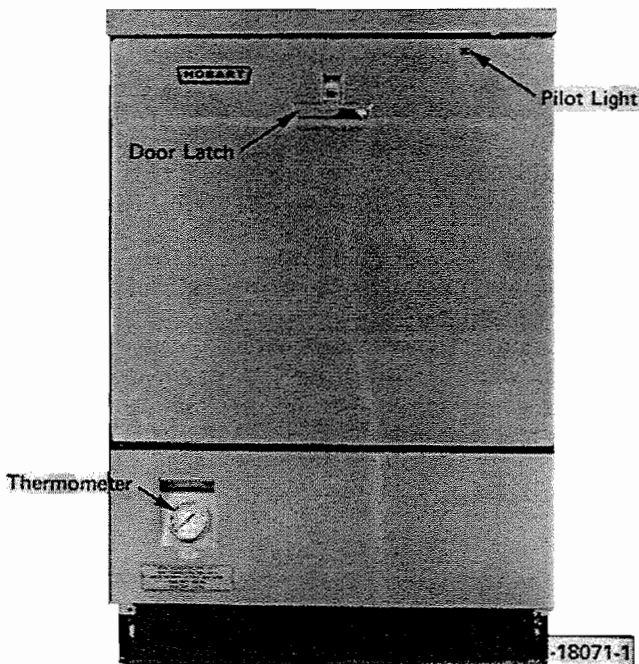


Fig. 4



Fig. 5

that the dishwasher is being supplied with the proper minimum temperature(s).

MAINTENANCE

CLEANING

To clean machine, open the door and slide the rack carrier out. Lift off the wash arm assembly by the hub (Fig. 5), not by any of the arms, and remove the strainer assembly (Fig. 5). Clean both in a sink.

With a damp cloth, wipe the interior and exterior of machine. Reinstall the filter and wash arm. Leave the door ajar overnight to allow machine to dry and air out.

Several days after installation, and periodically thereafter, the line strainer should be cleaned. Turn off water supply, remove strainer cap, withdraw and clean screen. Reassemble line strainer and turn on water supply.

DELIMING

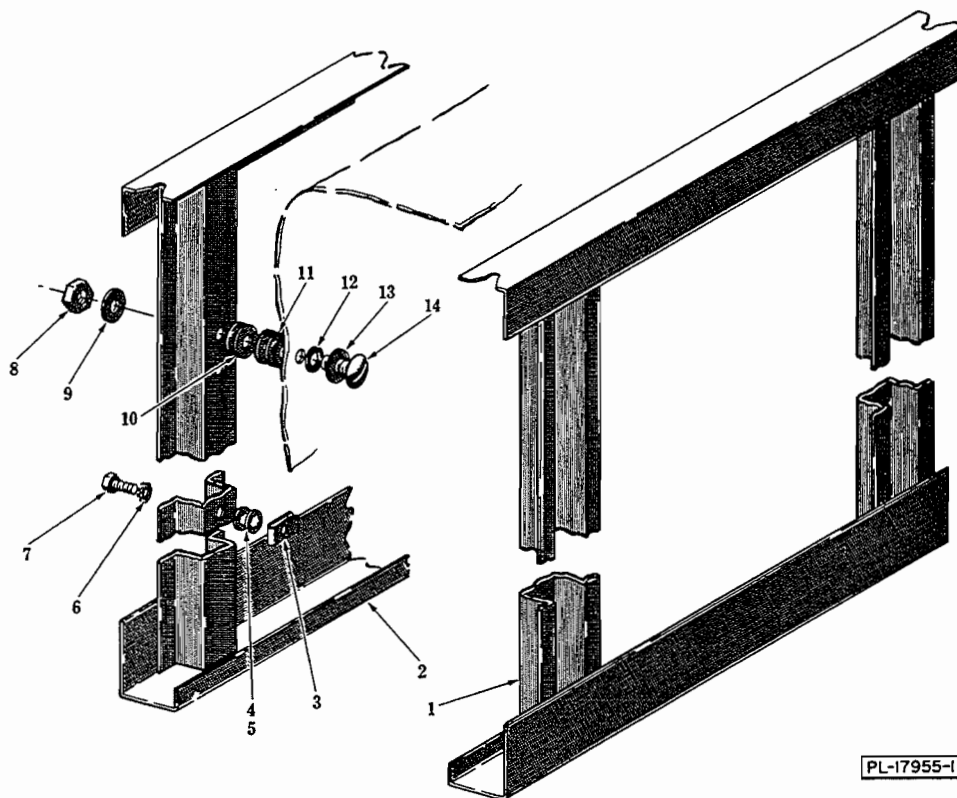
Occasionally it may be necessary to delime this dishwasher. The frequency will depend on mineral content of the water being used.

Inspect machine interior for lime deposits and if machine needs to be delimed, use a delimiting agent (such as Lime Away or LSR) and carefully follow supplier's instructions.

CAUTION: Do not allow delimiting agent to remain in machine longer than recommended. After delimiting, machine should be run through a cycle with no dishes in order to rinse and flush machine interior.

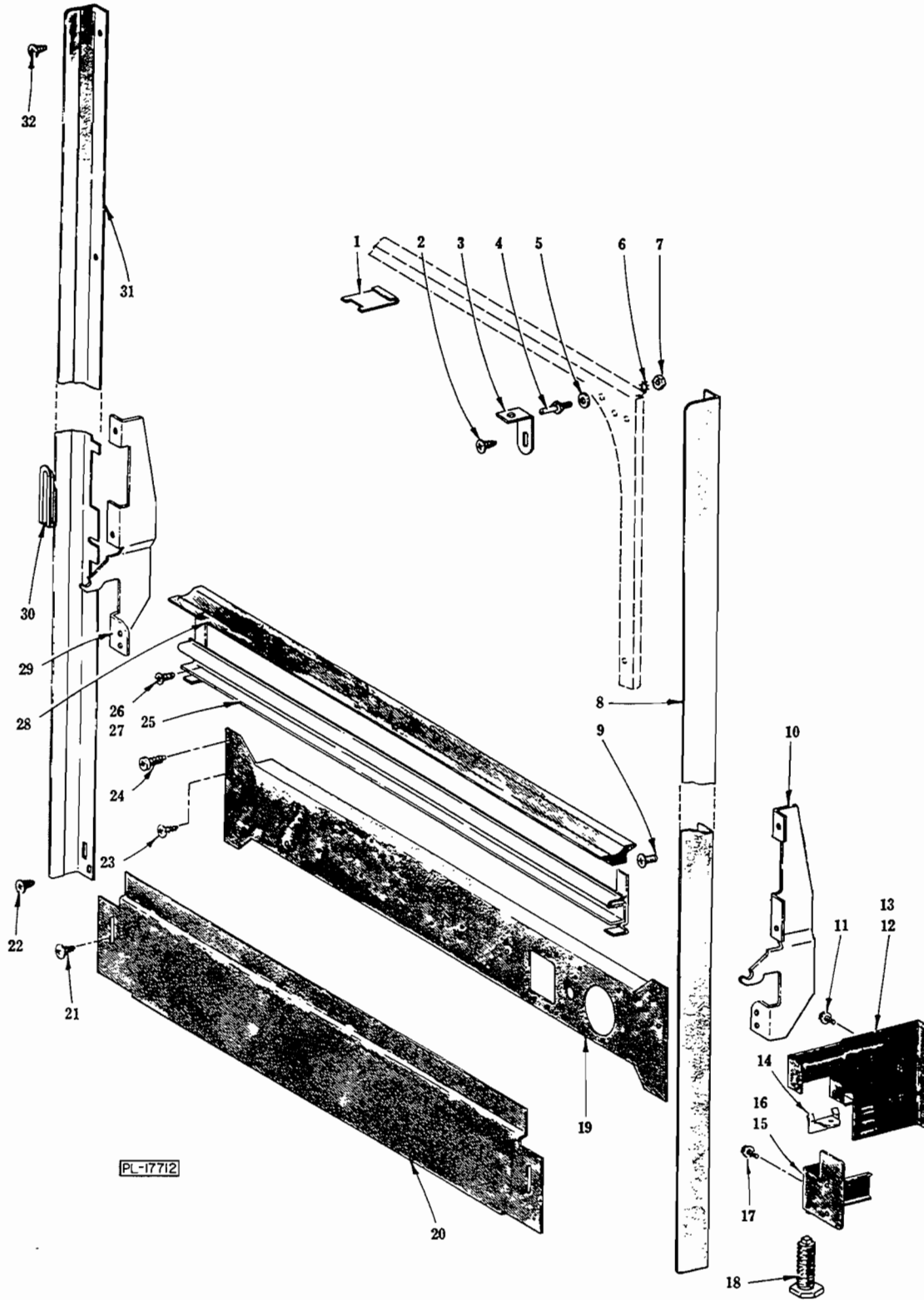
LUBRICATION

The motor has grease-packed ball bearings and no lubrication maintenance is required for this machine.



FRAME

ILLUS. NO.	PART NO.	NAME OF PART	AMT.
1	D-110768	R.H. Frame Assy	1
2	D-110767	L.H. Frame Assy	1
3	A-109867	Speed Nut - #10-32	4
4	C-240556-1	Spacer - Lower Tank (.031" Thk.)	AR
5	C-240556-2	Spacer - Lower Tank (.047" Thk.)	AR
6	WL-7-12	Lock Washer - #10 Ext. Shakeproof	4
7	SC-95-11	Mach. Screw - #10-32 x 9/16" Hex Hd	4
8	NS-17-63	Jam Nut - 7/16"-20 Hex Fin	4
9	WL-4-8	Lock Washer - 7/16" Light	4
10	WS-21-5	Washer - Shim (1/32" Thk.)	AR
11	M-84297	Washer - Shim (3/64" Thk.)	AR
12	D-67500-56	"O" Ring	4
13	M-101671	Seal - Support Screw	4
14	B-103864	Screw - Tank Support	4

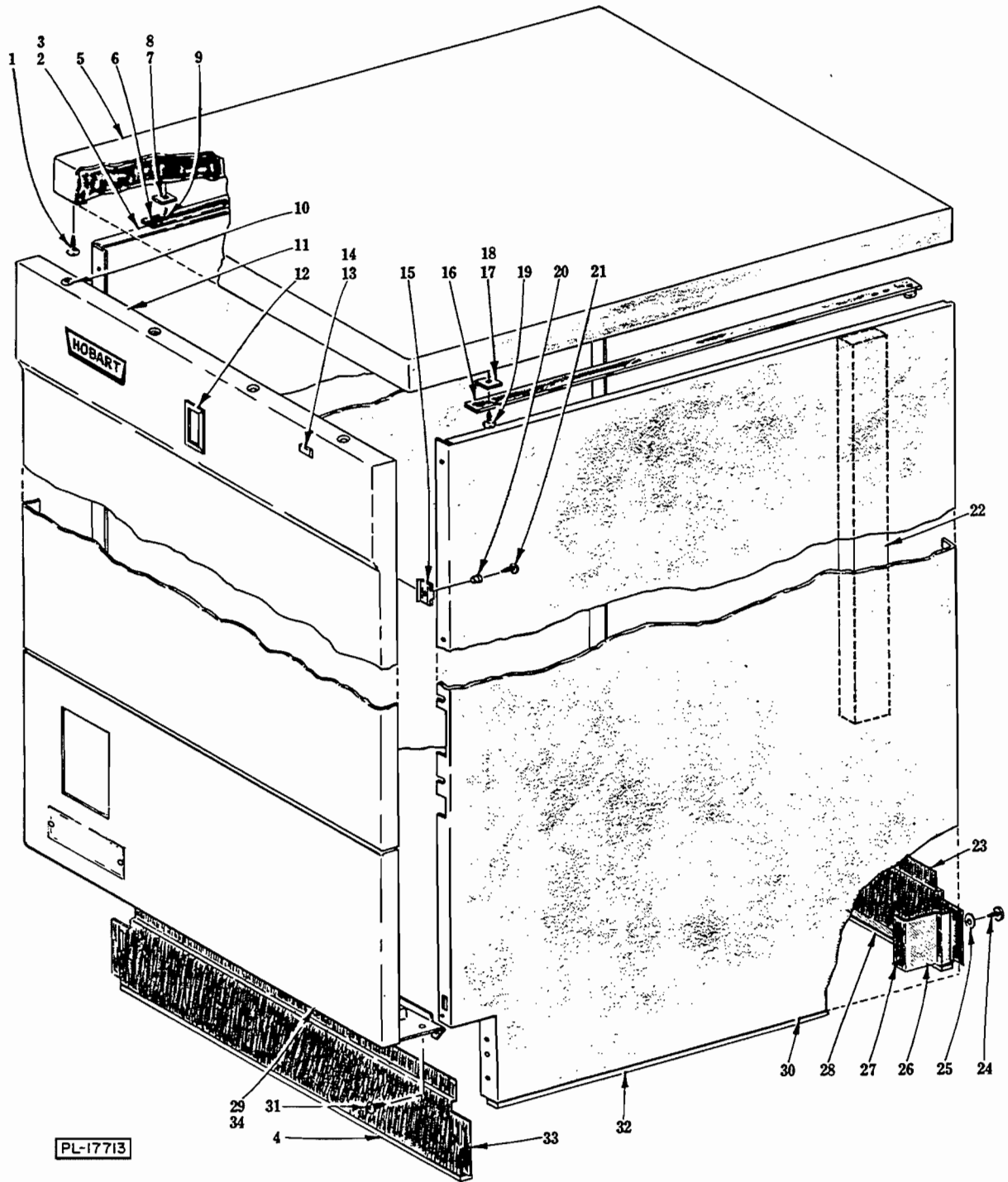


TRIM AND CHANNEL UNIT

TRIM AND CHANNEL UNIT

ILLUS. PL-17712	PART NO.	NAME OF PART	AMT.
1	P-81218	Keeper - Latch (Form at Assy.)	1
2	SD-26-9	Self-Tapping Screw - #10 x 1/2" Phil. Truss Hd., Type AB	2
3	C-240412-2	Bracket - Top Panel Anchor	2
4	M-82079	Stud - Safety Switch	1
5	WS-19-34	Washer (Fiber)	1
6	WL-7-12	Lock Washer - #10 Ext. Shakeproof	1
7	NS-9-30	Mach. Nut - #10-32 Hex	1
8	S-88810	Trim - Tank (R.H.)	1
9	SC-110-88	Mach. Screw - #10-32 x 1/4" Phil. Truss Hd	4
10	C-110364	Bracket - Hinge (R.H.)	1
11	SA-16-6	Screw & Washer Assy. - #10 x 3/8" Slot. Hex Hd., Type AB	4
12	D-115799	Bracket - Lower Panel Mounting (R.H.)	1
13	D-115800	Bracket - Lower Panel Mounting (L.H.) (Not Shown)	1
14	A-105529	Bracket - Spring Anchor	2
15	C-115790	Support - Kickboard (R.H.)	1
16	C-115791	Support - Kickboard (L.H.) (Not Shown)	1
17	SA-16-6	Screw & Washer Assy. - #10 x 3/8" Slot. Hex Hd., Type AB	2
18	A-116011	Foot - Leveling Bolt	4
19	S-88039	Channel - Front Cross (Frame)	1
*20	S-101855-1	Kickboard	1
21	SD-17-18	Self-Tapping Screw - #10 x 1/2" Phil. Truss Hd., Type AB	2
22	SD-17-4	Self-Tapping Screw - #6 x 3/8" Phil. Rd. Hd., Type AB	2
23	SD-17-14	Self-Tapping Screw - #10 x 1/2" Phil. Truss Hd., Type AB	2
24	A-103099	Self-Tapping Screw - #10-16 x 5/8" Phil. Pan Hd., Special	4
25	C-122328	Evaporation Channel & Panel Retainer Assy	1
26	SC-66-22	Mach. Screw - #10-32 x 3/8" Phil. Truss Hd	2
27	WS-19-34	Washer (Fiber)	2
28	P-72806	Channel - Evaporation	1
29	C-110365	Bracket - Hinge (L.H.)	1
30	C-88044	Bearing - Door Stop Insert	2
31	S-88811	Trim - Tank (L.H.)	1
32	SD-26-9	Self-Tapping Screw - #10 x 1/2" Phil. Truss Hd., Type AB	4

*WM.

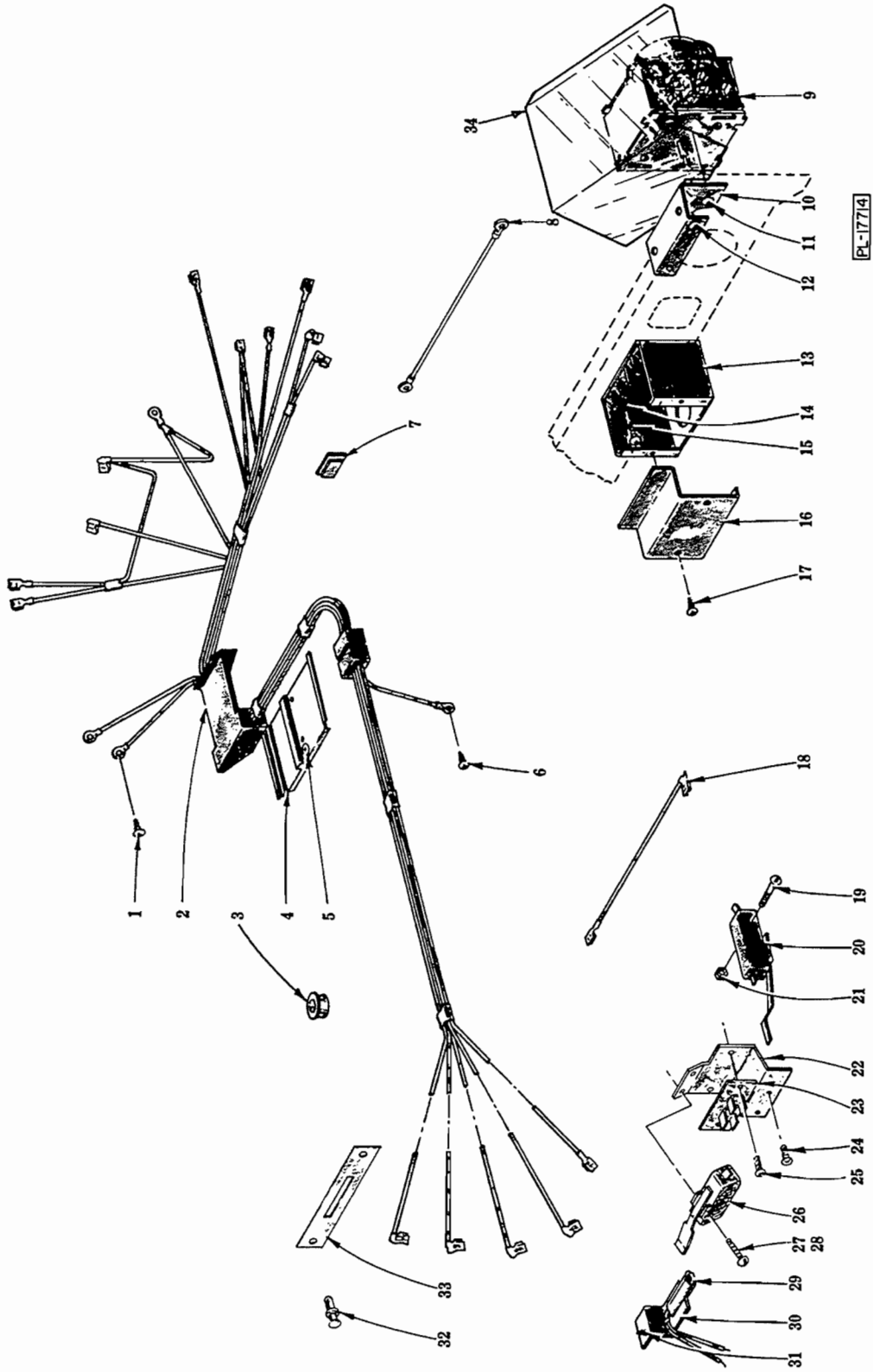


TOP AND PANEL UNIT

TOP AND PANEL UNIT

ILLUS. PL-17713	PART NO.	NAME OF PART	AMT.
*1	SW-10-4	Wood Screw - #10 x 3/4" Phil. Flat Hd	2
*2	E-113887-1	Side Panel & Seal Assy. (L.H.) (Incls. item #3)	1
*3	B-113873-1	Seal (Side Panel) (21-3/16" Lg.)	1
*4	B-113873-2	Seal (Kickboard) (22-7/8" Lg.)	1
*5	D-111084	Top Assy. (SST) (Incls. items #6, 7, 8, 9, 16, 17, 18 & 19)	1
*6	P-73094	Locating Stud & Bracket Assy. (L.H.)	1
*7	M-61252-1	Spacer - Top (.105" Thk.)	AR
*8	M-61252-2	Spacer - Top (.060" Thk.)	AR
*9	SW-10-4	Wood Screw - #10 x 3/4" Phil. Flat Hd	2
10	SD-22-27	Self-Tapping Screw - #6 x 3/8" Phil. Oval Undercut Hd., Type AB	4
11	E-118330	Outer Door Panel & Sound Barrier Assy. (Incls. items #12, 13, 14 & 15)	1
12	B-105673	Bezel - Handle Opening	1
13	M-102008-1	Lens - Pilot Light	1
14	P-102009	Retainer - Lens	1
15	A-109854	Speed Nut - #8A	4
*16	P-73095	Locating Stud & Bracket Assy. (R.H.)	1
*17	M-61252-1	Spacer - Top (.105" Thk.)	AR
*18	M-61252-2	Spacer - Top (.060" Thk.)	AR
*19	SW-10-4	Wood Screw - #10 x 3/4" Phil. Flat Hd	2
20	M-75401-1	Washer - #8 "Nyltite"	4
21	SD-17-42	Self-Tapping Screw - #8 x 1/2" Phil. Truss Hd., Type AB	4
*22	B-113872	Filler - Frame Channel	8
*23	E-113884	Kickboard & Seal Assy. (Incls. item #28)	1
*24	SD-26-9	Self-Tapping Screw - #10 x 1/2" Phil. Truss Hd., Type AB	4
*25	WS-19-34	Washer (Fiber)	4
*26	P-87955	Bracket - Side Panel Mounting	4
*27	SD-17-14	Self-Tapping Screw - #10 x 1/2" Phil. Truss Hd., Type AB	8
*28	B-113873-2	Seal (Kickboard) (22-7/8" Lg.)	1
29	C-276937-2	Lower Front Panel & Plate Assy. (WM-1D & WMP-1D)	1
*30	E-113886-1	Side Panel & Seal Assy. (R.H.) (Incls. item #32)	1
31	SD-17-14	Self-Tapping Screw - #10 x 1/2" Phil. Truss Hd., Type AB	2
*32	B-113873-1	Seal (Side Panel) (21-3/16" Lg.)	1
*33	E-113884	Kickboard & Seal Assy. (Incls. item #4)	1
34	C-276937-1	Lower Front Panel & Plate Assy. (WM-1 & WMP-1)	1
	B-114167-1	Panel Unit Assy. (For Converting WM to WMP) (Incls. items #1, 2, 5, 22, 23, 24, 25, 26, 27, 30 & 33)	1

*WMP.

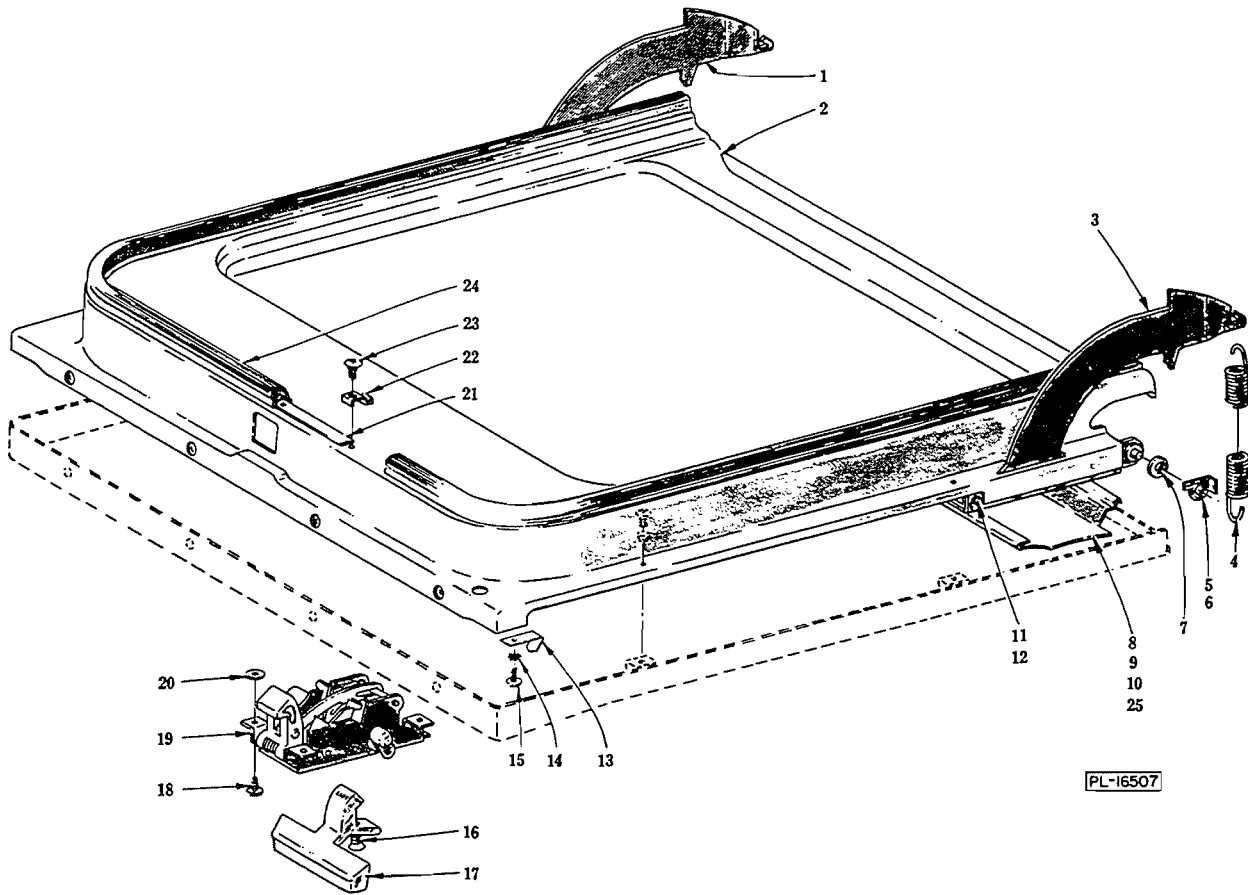


TIMER AND ELECTRICAL UNIT

TIMER AND ELECTRICAL UNIT

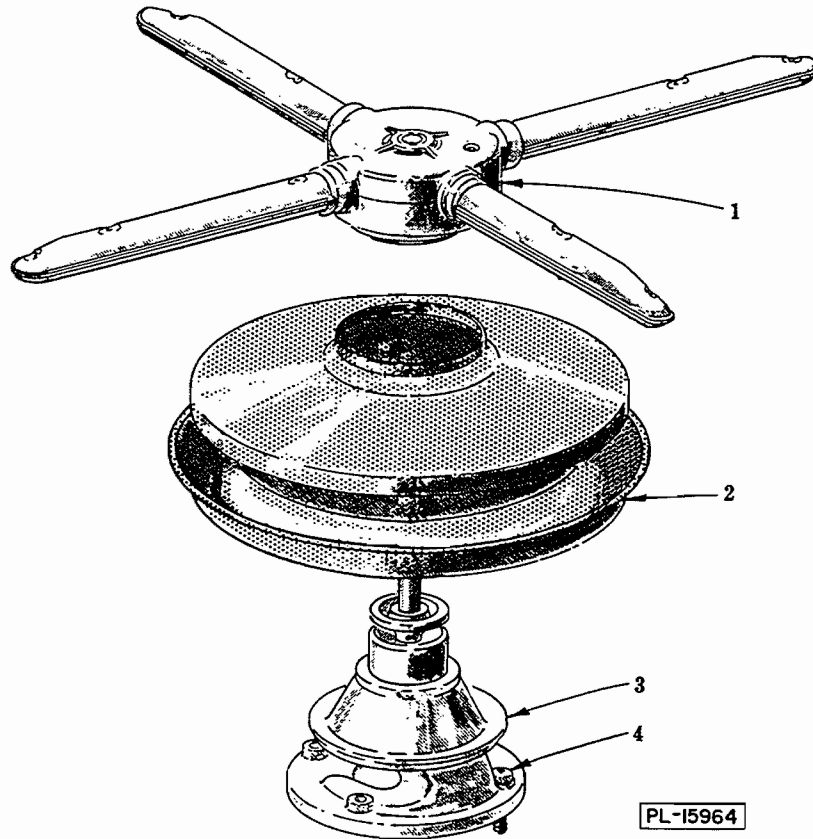
ILLUS. PL-17714	PART NO.	NAME OF PART	AMT.
1	SD-19-6	Self-Tapping Screw - #8 x 5/8" Phil. Rd. Hd., Type B	1
2	E-110741	Harness - Wiring	1
3	A-108970	Bushing - Heyco (Door - Pilot Light Leads)	1
4	C-101991	Conduit - Wiring Harness	1
5	SD-8-40	Self-Tapping Screw - #8 x 3/8" Phil. Truss Hd., Type B	1
6	SD-8-43	Self-Tapping Screw - #8 x 3/8" Phil. Rd. Hd., Type B	1
7	P-102203	Plug - Door Baffle	1
8	B-120142	Wire - Ground (Terminal Block to Cross Channel)	1
9	D-113709-1	Timer	1
10	P-101137	Bracket - Timer Mounting	1
11	SC-71-18	Mach. Screw - #10-32 x 5/16" Phil. Truss Hd	2
12	SD-17-14	Self-Tapping Screw - #10 x 1/2" Phil. Truss Hd., Type AB	2
13	P-73837	Enclosure - Electrical Supply	1
14	B-276684	Block - Main Terminal	1
15	SD-22-30	Self-Tapping Screw - #10 x 7/8" Phil. Pan Hd., Type AB	2
16	M-63800	Cover - Electrical Supply Enclosure	1
17	SD-8-43	Self-Tapping Screw - #8 x 3/8" Phil. Rd.Hd., Type B	2
18	B-110812	Lead (Interlock Switch to Program Switch)	1
19	SC-60-39	Mach. Screw - #6-32 x 7/8" Rd. Hd	2
20	B-105437	Switch - Interlock	1
21	NS-35-4	Special Nut - #6-32 "Palnut"	2
22	C-117792	Bracket - Terminal Board & Switch	1
23	B-117790	Terminal Board Assy	1
24	SD-10-11	Self-Tapping Screw - #6 x 3/8" Phil. Truss Hd., Type 17	2
25	SD-10-11	Self-Tapping Screw - #6 x 3/8" Phil. Truss Hd., Type 17	2
26	C-117791	Switch - Mach. Start	1
27	SC-60-39	Mach. Screw - #6-32 x 7/8" Rd. Hd	2
28	NS-35-4	Special Nut - #6-32 "Palnut"	2
29	A-108973-1	Pilot Light Assy	1
30	C-108701	Bracket - Pilot Light Mounting	1
31	SD-17-14	Self-Tapping Screw - #10 x 1/2" Phil. Truss Hd., Type AB	1
32	B-120944	Fastener - Expanded Clinch	2
33	B-120939	Chaff - Harness Guard	1
34	D-287961	Shield - Timer Drip	1

WM-1 REPLACEMENT PARTS



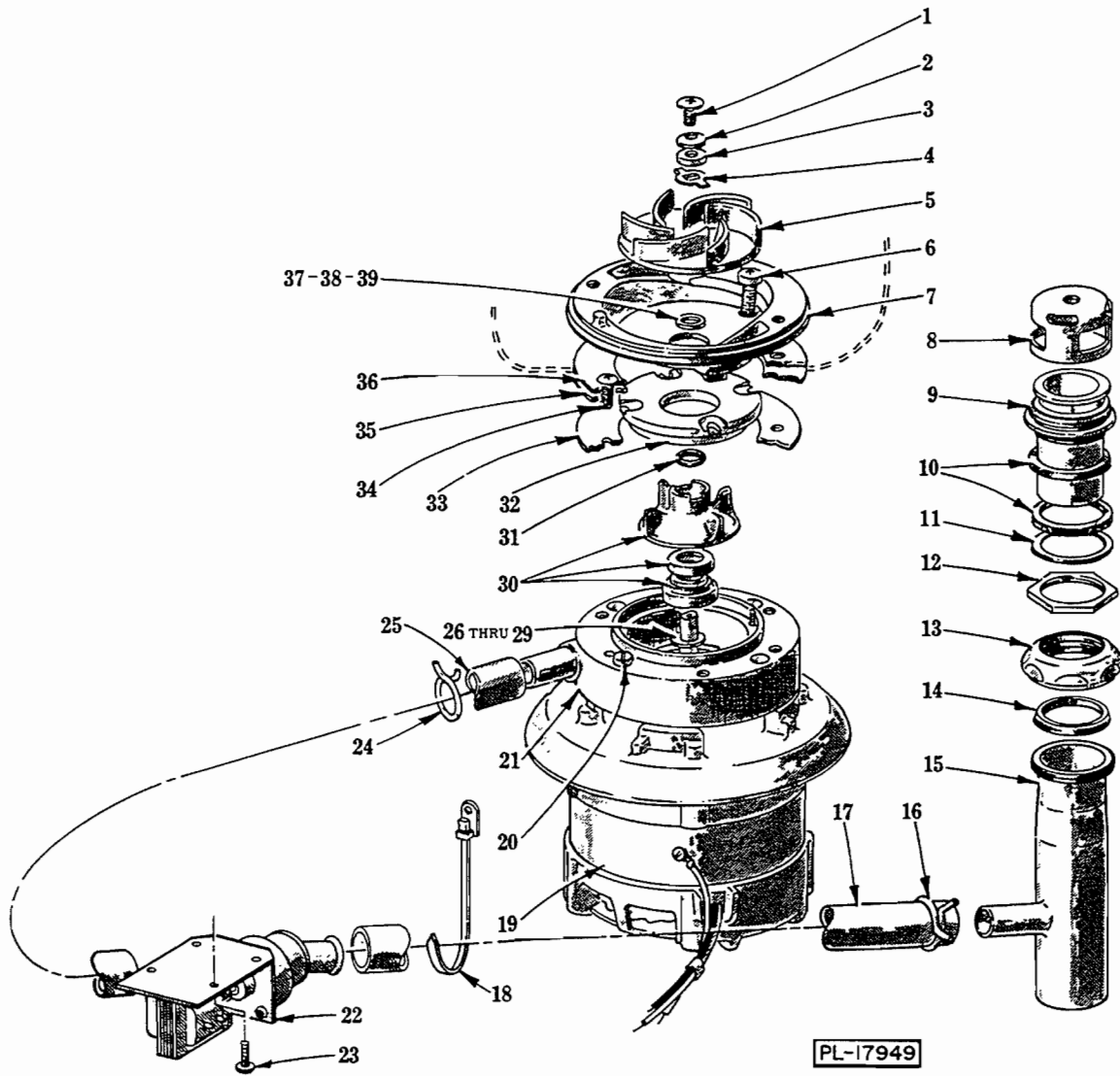
DOOR AND LATCH UNIT

ILLUS. PL-16507	PART NO.	NAME OF PART	AMT.
1	C-276021	Door Stop Bracket Assy. (L.H.)	1
2	C-110805	Inner Door & Seal Assy. (Incls. items #21, 22, 23 & 24)	1
3	C-276022	Door Stop Bracket Assy. (R.H.)	1
4	P-81244	Spring - Door Co-Balance	2
5	B-118662	Retainer - Door (R.H.)	1
6	B-118661	Retainer - Door (L.H.) (Not Shown)	1
7	M-82083	Washer - Door Shim	AR
8	S-81451	Shield - Door Vapor	1
9	WL-7-2	Lock Washer - #6 Ext. Shakeproof	2
10	SD-10-11	Self-Tapping Screw - #6 x 3/8" Phil. Truss Hd., Type 17	2
11	SC-66-7	Mach. Screw - #10-32 x 5/16" Phil. Truss Hd	2
12	WL-14-7	Lock Washer - #10 Ext. Shakeproof	4
13	B-240220	Clip - Door Panel Grounding	1
14	WL-14-7	Lock Washer - #10 Ext. Shakeproof	1
15	SD-8-43	Self-Tapping Screw - #8 x 3/8" Phil. Rd. Hd., Type B	1
16	SC-79-8	Mach. Screw - #10-32 x 5/8" Phil. Oval Hd	1
17	S-101333	Handle - Latch	1
18	SD-17-14	Self-Tapping Screw - #10 x 1/2" Phil. Truss Hd., Type AB	4
19	D-240982	Latch Mechanism Assy	1
20	WS-2-51	Washer	AR
21	S-81453	Retainer - Door Seal	1
22	M-24677	Clip - Door Seal	18
23	SD-10-11	Self-Tapping Screw - #6 x 3/8" Phil. Truss Hd., Type 17	18
24	D-121030	Gasket - Door Seal	1
25	SC-66-22	Mach. Screw - #10-32 x 3/8" Phil. Truss Hd	2



WASH ARM AND STRAINER

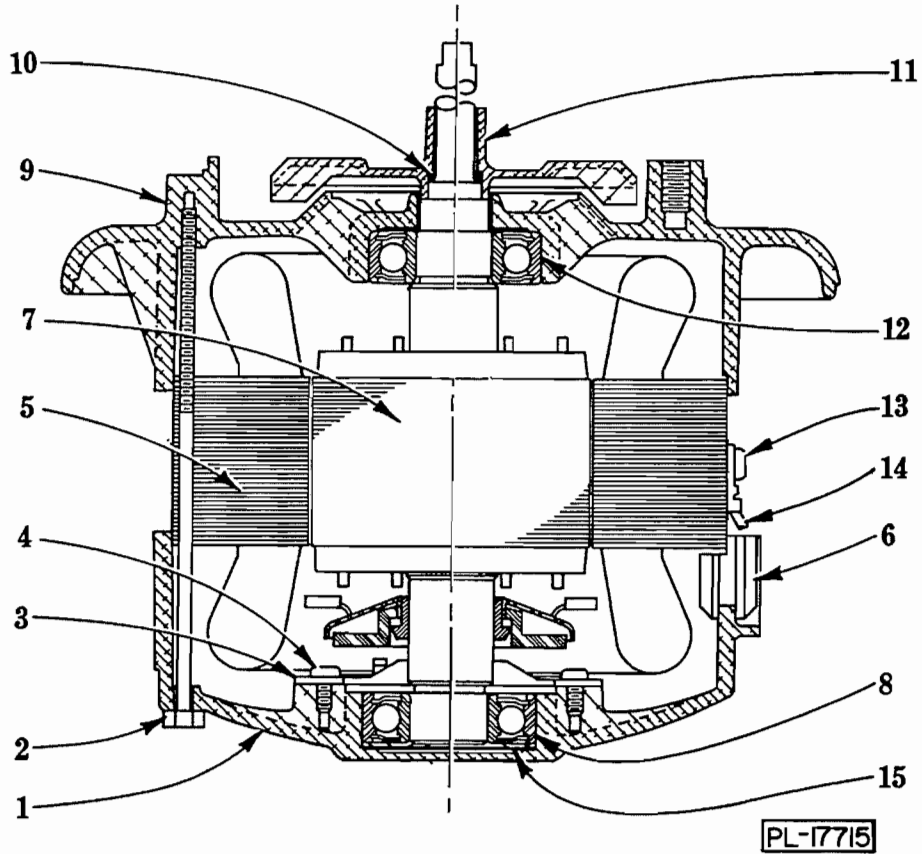
ILLUS. PL-15964	PART NO.	NAME OF PART	AMT.
1	E-115699	Wash Arm Assy. (4 Way Hydro Sweep)	1
2	D-120835	Strainer Assy. (SaniGuard Filter)	1
3	B-276850	Wash Arm Support, Seal & Cone Assy	1
4	SC-80-13	Mach. Screw - #10-24 x 7/8" Phil. Fil. Hd	4



WASH AND DRAIN UNIT

WASH AND DRAIN UNIT

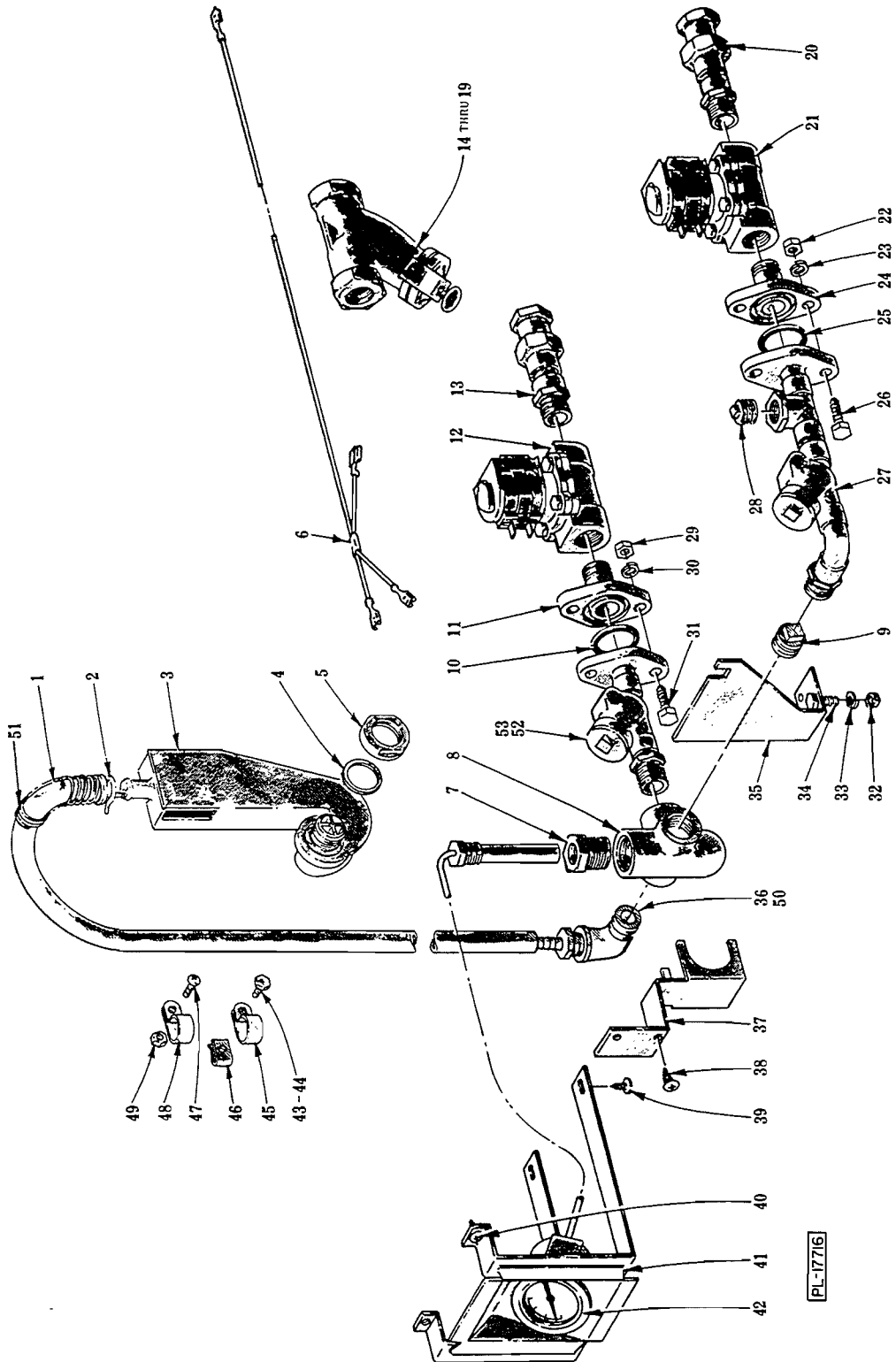
ILLUS. PL-17949	PART NO.	NAME OF PART	AMT.
1	SC-66-19	Mach. Screw - #10-32 x 7/16" Phil. Truss Hd	1
2	M-83752	Washer - Spring (Impeller)	2
3	A-107114	Cap - Washer	1
4	M-81492	Washer - Key	1
5	R-81271	Impeller - Wash Pump	1
6	SC-80-13	Mach. Screw - #10-24 x 7/8" Phil. Fil. Hd	4
7	D-106755	Body - Wash Pump	1
8	P-64052	Cap - Overflow	1
9	B-121975	Overflow Assy	1
10	M-64051	Gasket - Overflow	2
11	WS-14-37	Washer	1
12	M-64050	Lock Nut - Overflow	1
13	A-111690	Nut - Drain "Y" Connector	1
14	A-111691	Washer - Drain "Y" Connector	1
15	C-110821	Drain "Y" Connector Assy. (Incls. items #13 & 14)	1
16	M-102004-2	Clamp - Tube	2
17	C-110806-2	Tube - Drain (21" Lg.)	1
18	521869	Cable Tie (Hose Support)	1
19	B-122766-1	Motor, Seal & Gasket Assy. (115 V., 60 Hz.) (Incls. items #26 thru 30, 33, 37, 38 & 39)	1
20	SC-12-46	Mach. Screw - 1/4"-20 x 1-1/8" Fil. Hd	4
21	S-81269	Body - Drain Pump	1
22	C-118185	Drain Valve Assy	1
23	SD-17-12	Self-Tapping Screw - #10 x 1/2" Phil. Rd. Hd., Type AB	2
24	M-102004-2	Clamp - Tube	2
25	C-110806-4	Tube - Drain (15" Lg.)	1
26	B-240357	Washer - Shim (.005" Thk.)	AR
27	B-240358	Washer - Shim (.015" Thk.)	AR
28	B-240356	Washer - Shim (.030" Thk.)	AR
29	B-240229	Washer - Shim (.048" Thk.)	AR
30	A-117011	Shaft Seal & Drain Impeller Assy. (Incls. item #31)	1
31	D-67500-30	"O" Ring	1
32	P-81267	Top - Drain Pump	1
33	P-81439	Gasket - Tank	1
34	SC-66-30	Mach. Screw - 1/4"-20 x 3/4" Phil. Truss Hd	6
35	B-105687	Gasket - Motor Clamping Plate	1
36	P-81437	Plate - Motor Clamping	1
37	B-240361	Washer - Shim (.005" Thk.)	AR
38	B-240360	Washer - Shim (.015" Thk.)	AR
39	B-240359	Washer - Shim (.030" Thk.)	AR



MOTOR UNIT

MOTOR UNIT

ILLUS. PL-17715	PART NO.	NAME OF PART	AMT.
1	D-117657	Bracket - Bearing	1
2	M-101233-1	Bolt - #8-32 x 4-7/16" Hex Hd	4
3	C-111688-4	Switch - Starting (Stationary Part)	1
4	SD-9-34	Self-Tapping Screw - #6-32 x 3/8" Phil. Pan Hd., Type F	2
5	D-65477-149-1	Stator Assy	1
6	B-107326	Grommet - Rubber	1
7	B-22275-156	Rotor Assy	1
8	BB-20-18	Ball Bearing - N.D. #77503	1
9	D-117674	Bracket - Bearing	1
10	D-67500-30	"O" Ring	1
11	C-108642	Fan - Motor	1
12	BB-20-18	Ball Bearing - N.D. #77503	1
13	SD-12-28	Self-Tapping Screw - #8-32 x 3/8" Hex Hd., Type 23	1
14	C-87525-262	Lead (Ground)	1
15	SL-2-4	Loading Spring - N.D. #S-17	1



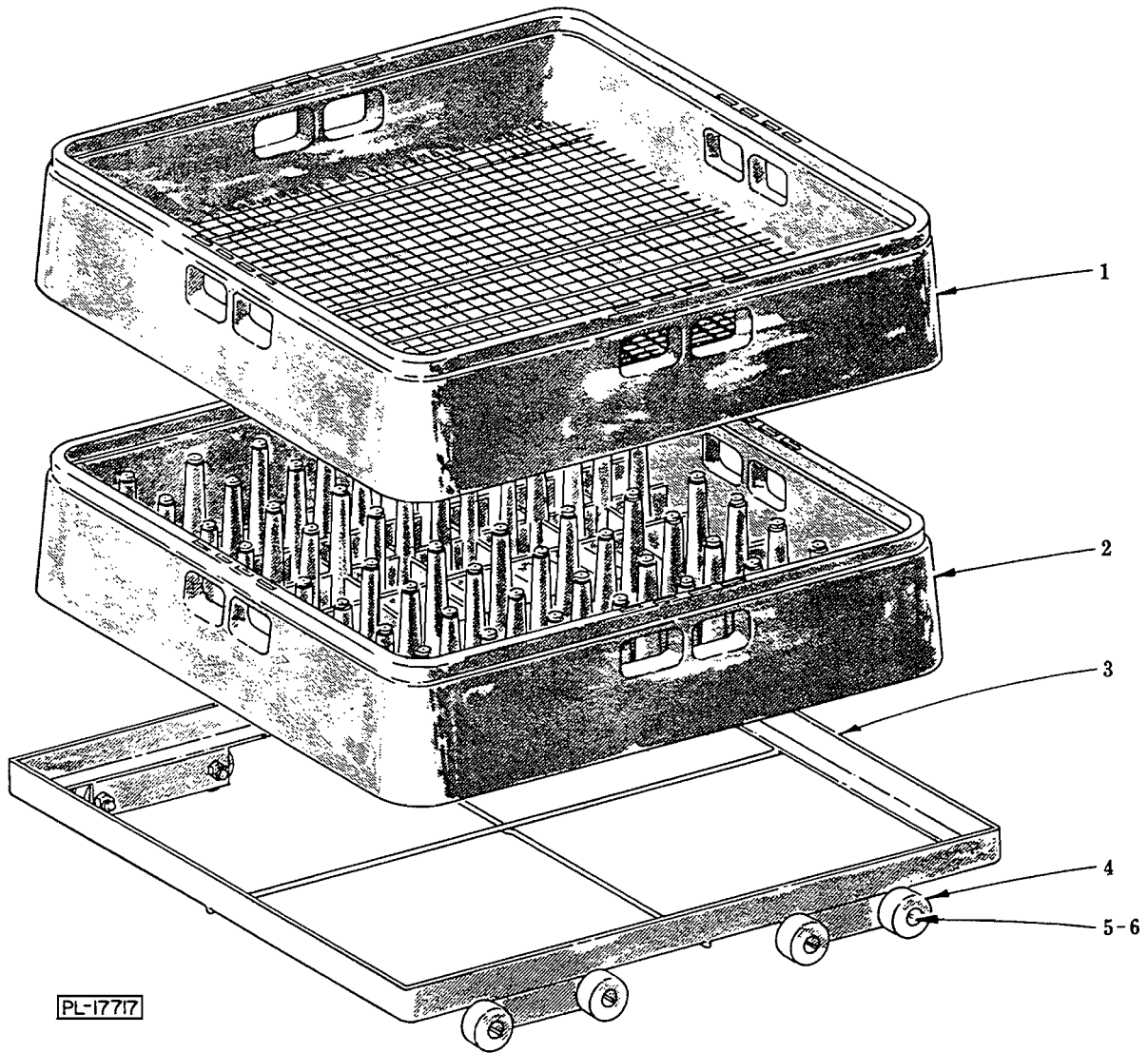
FILL UNIT

FILL UNIT

ILLUS. PL-17716	PART NO.	NAME OF PART	AMT.
1	B-82081-6	Connector - Flexible (30" Lg.) (Fill Elbow Assy. to Air Gap)	1
2	B-240462	Clamp - Hose	2
3	C-115733	Fill Air Gap Assy	1
4	B-115840	Gasket	1
5	A-103746	Nut - Fill Air Gap	1
*6	D-110839	Wiring Harness (Dual Fill)	1
7	A-107218	Coupling - Thermometer	1
8	P-66394	Manifold - Thermometer Bulb	1
**9	FP-28-15	Plug - 1/2" Sq. Hd. Pipe	1
10	D-67500-12	"O" Ring	1
11	P-63262-24	Flange & Nipple Assy	1
12	C-122434-3	Valve - Solenoid (Fill) (Incls. Coil)	1
13	B-277921	Inlet Piping Assy	1
14	A-102515	Line Strainer (1/2") (Incls. items #15 thru 19)	AR
15	M-82230	Screen (1/2" Line Strainer)	AR
16	A-102518	Plate - Seal (1/2" Line Strainer)	AR
17	M-82236	Clamp (1/2" Line Strainer)	AR
18	M-82238	Thumb Screw	AR
19	D-67500-59	"O" Ring (1/2" Line Strainer)	AR
*20	B-277921	Inlet Piping Assy	1
*21	C-122434-3	Valve - Solenoid (Fill) (Incls. Coil)	1
*22	NS-15-11	Full Nut - 5/16"-18 Hex Fin	2
*23	WL-6-22	Lock Washer - 5/16" Light	2
*24	P-63262-24	Flange & Nipple Assy	1
*25	D-67500-12	"O" Ring	1
*26	SC-41-15	Cap Screw - 5/16"-18 x 1-1/4" Hex Hd	2
*27	C-110802	Front Rinse Line Assy	1
*28	FP-28-7	Plug - 1/4" Sq. Hd. Pipe	1
29	NS-15-11	Full Nut - 5/16"-18 Hex Fin	2
30	WL-6-22	Lock Washer - 5/16" Light	2
31	SC-41-15	Cap Screw - 5/16"-18 x 1-1/4" Hex Hd	2
32	NS-13-1	Full Nut - 1/4"-20 Hex Fin	2
33	WL-6-16	Lock Washer - 1/4" Light	2
34	SC-36-14	Cap Screw - 1/4"-20 x 1/2" Hex Hd	2
35	C-110733	Bracket - Fill Piping Support	1
36	FP-15-17	Elbow - 1/2" x 90° Street	1
37	C-110734	Bracket - Fill Pipe Locating	1
38	SD-17-14	Self-Tapping Screw - #10 x 1/2" Phil. Truss Hd., Type AB	2
39	SD-17-14	Self-Tapping Screw - #10 x 1/2" Phil. Truss Hd., Type AB	2
40	SD-8-43	Self-Tapping Screw - #8 x 3/8" Phil. Rd. Hd., Type B	2
41	C-110825	Thermometer Bracket Assy	1
42	D-276923-5	Thermometer (F/C)	1
43	SC-95-11	Mach. Screw - #10-32 x 9/16" Hex Hd	1
44	WL-7-12	Lock Washer - #10 Ext. Shakeproof	1
45	M-78752-10	Clamp - Flexible Connector	1
46	A-109867	Speed Nut - #10-32, Type U	1
47	SC-53-2	Mach. Screw - #10-24 x 1/2" Phil. Truss Hd	1
48	M-78752-10	Clamp - Flexible Connector	1
49	NS-11-18	Mach. Nut - #10-24 Hex	1
50	B-277919	Connector - Straight Barb	1
51	C-287593	Spring - Coil	1
*52	B-110801	Front Wash Line Assy	1
**53	B-110796	Flange, Tube & Adapter Assy	1
	B-286512	Fill Elbow Assy. - 90° (Incls. items #36 & 50)	1
	C-276634	Coil - Solenoid Valve (Use with items #12 & 21)	1
	B-122757	Kit - Solenoid Valve	1

*Dual Fill Machines.

**Single Fill Machines.



RACK UNIT

ILLUS. PL-17717	PART NO.	NAME OF PART	AMT.
1	A-105114	Rack - Combination	1
2	A-105113	Rack - Peg	1
3	D-110827	Rack Carrier Assy. (Incls. items #4, 5 & 6)	1
4	B-110742	Slide - Rack Carrier	8
5	SC-22-35	Mach. Screw - 1/4"-20 x 1" Flat Hd	8
6	NS-31-21	Stop Nut - 1/4"-20 "Elastic"	8